

A Publication of the
EFO Collectors' Club
APS Affiliate #103
ATA Chapter #94

www.efocc.org

The EFO Collector



April - June 2016

Volume XLIV No. 4

Whole Number 183

ISSN 1099-7377



Unmitigated Disaster!

Inside This Issue

| | | | |
|---|----|--------------------------|----|
| Exhibiting EFOCC Members | 5 | From Your Editor | 3 |
| Joseph Monteiro: New Zealand Color Errors in Auction Catalogues 6/13 – 3/14 | 6 | EFOCC Member Post | 3 |
| Cemil Betanov: EFO in the Mailbox | 9 | Treasurer's Report | 15 |
| Dan Pagter: WESTPEX – A Stamp Show Worth Hooting About | 11 | Auction 143 Realizations | 23 |
| John Hotchner: PerfOrations: Not Spending Big Bucks – Part 6 | 14 | | |
| EFOCC Press Release | 16 | | |
| David Hunt: Auction 144 Notes | 16 | | |
| David Hunt Presents Auction 144 | 13 | | |



To Err is Human, To Find is Divine



Upside down or grounded, Siegel sells them best.



Robert A. Siegel

AUCTION GALLERIES, INC.

For information about our auctions or to request a copy of the next sale catalogue and newsletter, please contact:

Robert A. Siegel Auction Galleries, Inc., 60 East 56th Street, 4th Floor, New York, N.Y. 10022

Phone (212) 753-6421 Fax (212) 753-6429 E-mail: stamps@siegelauctions.com

For on-line catalogues, prices realized and the Siegel Encyclopedia

www.siegelauctions.com

From Your Editor



This time, there is a lot to report about.

NY 2016

The once-a-decade international exhibition came and went. There were lots of great aspects to it. Many exhibits (If you ask me, too many. Even looking only at the exhibits I had marked ahead of time created some kind of exhibit overload.) However, the court of honor, where true and famous rarities were on display, was very interesting. There were many clubs in attendance, where you could talk to representatives to check out what they exactly do. There were first day ceremonies. There were also a few dealers specializing in philatelic supplies. It is nice to be able to touch and compare various type of similar supplies before buying what you need, something that's harder to do when you shop on the internet. Then there were many excellent dealers who were happy to share in your retirement funds. There were also many society meetings and presentations.

Speaking of society meetings and presentations, John Hotchner organized a joint meeting of the USSS and EFOCC on Friday, June 3rd. He gave a talk on EFOs which was well received. Dave and I used also the opportunity to advertise EFOCC memberships and even signed up a couple of new members. Below are two pictures from that event. By the end of the presentations, there were about 30 participants. The group picture below was taken before John's talk started and shows fewer people than actually participated. We'd like to thank John for organizing the meeting.



Dave Hunt was there for six days of the show and my guest, and I think he enjoyed the show as much as I enjoyed the camaraderie and his incredible knowledge about all things stamp. Below is a picture of Dave, his shirt color coordinated with the colors of the Big Apple. I guess the colors in the background are indicative of how he feels after looking at 1279 exhibits in one day (there were 4000+ exhibits – if you into

looking at exhibits, definitely enough to cause an exhibit overload).



Dave wrote also a report on NY 2016, and we will have it in the next issue of The EFO Collector. We ran out of space in this issue. Sorry, Dave!

One more item I should mention is that various dealers had were quite sophisticated publications printed in excellent quality and available for free. I liked three in particular. The first two were issued by Mystic, written by Ken Lawrence, one on the Grinnell Missionaries (forgeries, an EFO subject) and the other on the Black Honduras, marginally mentioning forgeries and lies about forgeries. Although these two booklets are more like pamphlets, they are well written and have excellent illustrations. The third was issued by Stanley Gibbons, focusing on “iconic stamps of Great Britain and The British Empire”.

During the joint meeting of the USSS and EFOCC at NY 2016, John, on behalf of the EFOCC, presented an award for Jacques Schiff, inducting him into the EFOCC Hall of Fame. We actually expected Jacques to be there, but he apparently could not make it. Unfortunately, his health has not been the best, since he was in a traffic accident a couple of years ago.

EFOCC Ribbons

Dave Hunt was kind enough to create a new set of ribbons for juries to award to exhibits which have an EFO dimension. We will also shortly put together one page of guidelines. If organizers of a philatelic exhibition want to award these ribbons, all they have to do is to contact yours truly by e-mail or by snail mail (if they do that, hopefully they will use a commemorative stamp). There are two levels: EFOCC First and EFOCC Second. To be awarded one of these, an exhibit is expected to have an EFO component, but the exact definition of “component” us left to the judges' discretion. The first time an exhibitor wins an EFOCC first award, she or he also receives a one year membership gratis. To allow your *(continued on page 16)*

EFOCC Member Post

WANTED: \$2 Inverted Jenny material for exhibit. Exceptional and promotional items and printing varieties. David Bize, Tel.: (623)556-4428.

WANTED: Valuable United States Major Errors. Scott or Scott-Datz listed or new discoveries. Send photocopies or telephone me (201-343-9239, 11am-7pm). No internet. Jacques Schiff, 211 Johnson Avenue, Apr. 2G, Hackensack, NJ 07601.

ALL CONTENTS COPYRIGHTED © 2016 BY THE EFO COLLECTORS' CLUB.

Authors and contributors have express permission to reuse of their material elsewhere. Except for material reprinted herein, or material individually copyrighted by the author, material herein may be reprinted elsewhere as long as full credit is given to The EFO Collector, citing the issue date and number and giving the address of the EFOCC Secretary. ♦ The EFO Collector is published quarterly, in March, June, September and December. The submission deadline for any issue is the 15th of the month preceding the issue, e.g. 2/15, 6/15, 8/15 and 11/15. Send or e-mail editorial material directly to the Editor. Sample copies of The EFO Collector are available for \$3 from the Secretary. ♦ Membership includes subscription to The EFO Collector. Membership fees are as follows:

| | Members with addresses in the U.S. or Canada | Members with addresses elsewhere |
|-----------------------------|--|-------------------------------------|
| One year's dues | \$20.00 | \$37.00 |
| One year membership renewal | \$20.00 | \$37.00 |
| Two year membership renewal | \$37.00* | \$70.00* |
| Life membership | \$350.00† | \$500.00 |

Please make membership renewal checks to "EFOCC" and mail to Treasurer. Charges can be paid via PayPal, subject to a \$2 convenience fee, e-mail Secretary for details. [*] Each additional year prepaid at the same time is \$17/\$33. [†] \$300 for those older than 65.

Advertising Rates

| | Per Issue | Contract 4 Issues |
|-------------------------------|-----------|-------------------|
| Full page in color | \$100.00 | \$328.00 |
| Half page in color | \$80.00 | \$280.00 |
| Quarter page in color | \$65.00 | \$244.00 |
| Cover location in color | \$125.00 | \$400.00 |
| 2 page center spread in color | \$150.00 | \$450.00 |

Single insertion advertisements and from those who are not APS Members must be fully prepaid. Four-issue contract rate advertisers will be invoiced in full upon publication of their first ad. 20% discount for black & white advertising. The deadline for ad copy is the 15th of the month preceding the issue. General advertisement inquiries should be directed to the Advertising Director at moek78@msn.com. Advertisement copy related inquiries should be directed to the Editor. Ad payments should be directed to Treasurer. Please make checks payable to "EFOCC".

EFOCC Officers (2015-2016)

| | | | |
|-------------------------|---|--------------------------|-----------------------|
| President | Wayne Youngblood | WYStamps@gmail.com | |
| Vice-President | Cemil Betanov 153 Claudy Lane, New Hyde Park, NY 11040 | CemilB@optonline.net | Phone: (516) 849-6604 |
| Auction Director | David Hunt 45 Fairway Drive, Denver, PA 17517 | dhhunt@ptdprolog.net | Phone: (717) 445-9420 |
| Treasurer | David Hunt 45 Fairway Drive, Denver, PA 17517 | dhhunt@ptdprolog.net | Phone: (717) 445-9420 |
| Secretary | Scott Shaulis P. O. Box 549, Murrys ville, PA 15668-0549 | scottshaulis@comcast.net | Phone: (724)733-4134 |
| Editor | Cemil Betanov 153 Claudy Lane, New Hyde Park, NY 11040 | CemilB@optonline.net | Phone: (516) 849-6604 |
| Club Member-at-Large | Nancy B. Clark P. O. Box 427, Marstons Mills, MA 02648-0427 | nbc@cape.com | Phone: (508) 428-9132 |
| Club Member-at-Large | Edward A. Kennedy 19 Ranier Road, Effort, PA 18330-8829 | moek78@msn.com | Phone: (570) 620-2011 |
| Advertising Director | Edward A. Kennedy 19 Ranier Road, Effort, PA 18330-8829 | moek78@msn.com | Phone: (570) 620-2011 |

EFOCC Member Post Submission Form

Every EFOCC member is entitled to three free 35 word listings per year in the EFOCC Member Post. To use your free listing, please complete this form, and mail it to the Editor. If you wish, you can also e-mail your request to the Editor.

Help With Members' New Projects Submission Form

If you would like a free listing in The EFO Collector to help you with a new EFO project, please complete this form and mail it to the Editor. If you wish, you can also e-mail your request to the Editor.

I am looking for

Name, address, e-mail:

Exhibiting EFOCC Members

WESTPEX 2016, April 29-May 1, Burlingame, CA

Alfredo Frohlich, Republic of Colombia, International Mail, 1886-1899, Reserve Grand & Gold, COLOMPHIL – Outstanding Study of South & Central American Philately.

PHILATELIC SHOW 2016, May 6-8, Boxborough, MA

Anthony F. Dewey, The 1991 'F' Tulip Stamps and Their First Day Covers, Gold, American Philatelic Society Post-1980 Medal of Excellence.

Larry Fillion, Art Craft's 1962 Anti-Malaria Campaign, Gold.

Larry Fillion, Morocco's 1962 Anti-Malaria Set for "The World United Against Malaria" Campaign, Single Frame - Vermeil.

NY2016, May 28-June 4, New York, NY

Alfredo Frohlich, Panama, The Path Between the Seas, Large Gold.

Anthony F. Dewey, The 3¢ Connecticut Tercentenary Issue of 1935 and Its First Days, Gold, Special Prize for treatment.

Robert Rufe, U.S. Special handling 1925-1959: The Stamps and The Service, Gold, Felicitation for Research.

Charles O'Brien III, The New York World's Fair 1939, Large Vermeil.

COLOPEX 2016, June 10-11, Columbus, OH

Andrew McFarlane, First Days of the 1929 George Rogers Clark Commemorative, Grand & Gold, American First Day Cover Society Award, United States Stamp Society Statue of Freedom Award.

OKPEX 2016, June 17-18, Midwest City, OK

Alfredo Frohlich, SCADTA Airmail Stamps for SCADTA Airmail Service in Ecuador, Single Frame – Gold, American Philatelic Congress Award.

Minnesota Stamp Expo 2016, July 15-17, Crystal, MN

Alfredo Frohlich, Republic of Colombia, International Mail, 1886-1899, Gold.

APS StampShow 2016, August 4-7, Portland, OR

Alfredo Frohlich, Panama, The Path Between the Seas, World Series of Philately Prix d'Honneur.

Alfredo Frohlich, Chile – The Rouletted Issues 1877-1899, World Series of Philately Prix d'Honneur.

Andrew McFarlane, First Days of the 1929 George Rogers Clark Commemorative, World Series of Philately Prix d'Honneur.

John M. Hotchner, World Rarities & Uniquities, Court of Honor.

John M. Hotchner, Kurt and **Joann Lenz** & Richard Drews, U.S. Postal Counterfeits from 1894 to Modern Times, Court of Honor.

John M. Hotchner, The Hummingbirds Issue of 1992, Court of Honor.

Alfredo Frohlich, Colombia's Cartagena Provisional Civil War Issues – 1899-1902, Gold.

Alfredo Frohlich, Replating Colombia's 1861 1 Peso Stamp, Single Frame – Grand & Gold.

Wayne Youngblood, Lost Almost: The Los Alamos, N.M. Post Office and WWII, Single Frame - Gold.

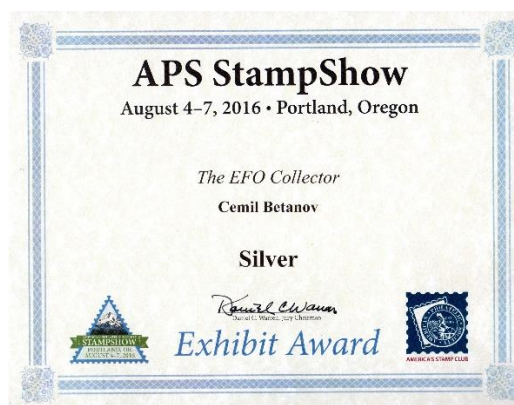
Wayne Youngblood, Topical Time, Literature - Gold.

Cemil Betanov, The EFO Collector, Literature - Silver.

Congratulations to our Exhibitor Members!

Of Note:

- ❖ William Averbeck won at APS StampShow The EFOCC First Award with his exhibit Canadian Errors Stamps & Causes.
- ❖ Your favorite philatelic journal received a Silver Award at StampShow 2016 at Portland, OR.
- ❖ If any member names are missing in the listings above, please notify your Editor and accept our apologies.



New Zealand Color Errors Reported in Auction Catalogues June 2013 through March 2014

Joseph Monteiro

The major errors on stamps occur because of the printer or the perforator. There are many types of printing errors. These can range from the actual printing of stamps to the paper on which the stamps are printed. The most important printing errors are inverts and missing colour errors. Besides missing colour errors there are other types of colour errors such as shifted colour errors, double colour errors, inverted colour errors, etc. Many reasons have been put forth for these colour errors but the most common is inappropriate movement in the sheet of stamps being printed.

In this article, I shall describe the shifted colour and double colour errors that have appeared in the major auctions catalogues of New Zealand between June 2013 and March 2014. The same errors reported in my earlier article on the subject will not be repeated. I shall follow a chronological order, using the year of issue of the stamp.

Shifted Colors

Third Pictorials – Aerial Crop Dusting – 1960

In 1960, New Zealand Post issued a definitive set of twenty-three stamps (1/2d to £1) depicting a variety of pictorials ranging from flowers to the Geyser. The 1s9d stamp issued on September 1, 1960 depicted aerial crop dusting. These stamps were printed using photogravure by Harrison and Sons Ltd., England, in panes of 160 stamps.

The auction catalogue described this omitted colour error as follows:

*“565 * 1/9 Aerial Topdressing Multi CP 15b(x)Pair with Major 20mm Red Colour Shift to the right unh. CP Cat \$500 (2) Photo-Plate 5. Est...\$300.” [1]*

The red colour of the plane's wings is shifted 20mm to the right and is on the border of the stamp and is very noticeable.



Commemorative – Cook Bicentenary – 1969

On October 9, 1969, New Zealand Post issued a set of stamps to commemorate the bi-centenary of Captain Cook. The set of four stamps (4c, 6c, 18c and 28c) depict Captain Cook, Banks, Solander, and a Map. The stamps were designed by E. Mayo and printed by Harrison and Sons, England using photogravure in panes of 100 stamps per pane. The 4c stamp was



printed in colours of blue, grey, red and black. The error on the 4c stamp and was described in the auction catalogue as follows:

*“1398 * 1969 4c Cook Bicent error: 2mm diagonal upwards to right black (Cook & sextant) colour shift with normal for comparison. Not listed by CP. Spectacular. MUH. Est...\$150.” [2]*

The grey portrait of Captain Cook on the left top corner appears shifted upward and is quite noticeable though the shift is quite small – only 2mm. Being a small shift, it is perhaps reflected in the price of the error which is considerably lower than some of the other errors reported hereafter.

Fifth Pictorials – Tussock Butterfly – 1970/71

In 1970/1, New Zealand Post issued a definitive set of twenty-one stamps (1/2c to \$2) depicting a variety of pictorials ranging from butterflies and moths to helicopters. The 2c Tussock Butterfly stamp was printed in colours of dark yellow, olive green, light brown and black. The stamp was designed by E. Hunter and printed by Harrison and Sons, England. The shifted colour error on this stamp was described in the auction catalogue as:



*“1170 * 1973 2c Butterfly no wmk error: major colour shift (purple-brown) 2.5mm upwards resulting in lower wings comprising basically 2 colours in a selvage block of 4. Very impressive error. With normal for comparison. CP P3b(v). Ca\$1200. MUH. Est... \$600.” [3]*

The upward shift in the brown colour is very impressive. The brown colour partly appears on the inscription above indicating the name of the country and the value of the stamp.

Fifth Pictorials – Puriri Moth – 1970/71

The 1970/1 lower value definitive stamps of the Fifth Issue shows designs of moths and butterflies. The eleven lower values range from ½c to 8c. They were designed by E. Hunter and printed in panes of 200 stamps per pane. The 4c stamp was printed in colours of dark blue, yellow and green using photogravure and letterpress overprinting by Harrison and Sons Ltd., England. The design depicts the Puriri Moth. The auction catalogue offered two types of errors for sale. The first error was described as:

*“1160 * 1973 4c Moth, major (6mm) yellow colour upward shift, blk of 4, no. wmk. CP P6ck. Cat \$1000. MUH....Est. \$500.” [4]*



The second error was described as:

*“1167 * 1973 4c Moth, no wmk, spectacular double error: light green colour 3.5mm vertical shift, also dark green colour 10mm vert shift, in lower selvedge block of 4, resulting in green wings & veins appearing in lower margins of upper stamps. MUH. ...Est \$1.000.” [5]*



The upward yellow colour on the moth in the first error is quite noticeable and its absence also appears partly on the name of the country at the bottom of the stamp. The shift in the green colour on the second error can also be easily spotted, it partially appears on the wings of the moth and appears on the white borders of the stamp at the top.

Commemorative – One Ton Cup – 1971

On March 3, 1971, New Zealand Post issued a set of postage stamps to mark the occasion of the yachting contest. The 5c stamp displays a yacht sailing and the 8c stamp depicts the one ton cup trophy. The stamps were designed by J. Berry and printed by Bradbury Wilkinson, England in panes of 100 stamps per pane. The shifted colour error on the 8c stamp was described in the auction catalogue as:

*“591 * 1971 8c One Ton Cup SG 951 Mint with a 2mm Blue Colour Shift Upwards with a normal for comparison (2) Photo-Plate 5. Est...\$75” [6]*



The upward blue colour shift is noticeable to philatelists but not so pronounced as to attract the attention of the common man.

Commemorative – Military History – 1984

On November 7, 1984, New Zealand Post issued a set of four stamps (24c, 40c, 58c and 70c) and a souvenir sheet containing these four stamps. The designs of the four stamps depict army personnel in South Africa, France, North Africa and Korea, respectively. The stamps were designed by R. M. Conly and printed using lithography by Harrison and Sons, England, in panes of 100 stamps per pane. The 40c stamp in the souvenir sheet on which this error was found was printed in multi-colours. The auction catalogue describes this error as:

*“1527 * 1984 NZ Army m/s error: spectacular 4mm colour shift to left of magneta affecting only 40c (France 1917) stamp, however “New Zealand” & “40c” are in their correct positions. With normal for comparison. A most unusual variety & the 1st we’ve seen. MUH. Est...\$500.” [7]*



The 4mm colour shift toward the left of the stamp on the left is quite noticeable creating a blank white shadow on the right of the image where the magenta colour should have appeared.

Commemorative – Taipei Stamp Exhibition – 1993

On August 14, 1993, New Zealand Post overprinted two mini sheets to indicate its participation at the Taipei Stamp Exhibition. The two mini sheets overprinted were the \$2.70 Health mini sheet and the \$3 Round Kiwi mini sheet. The \$3 Kiwi mini sheet designed by Leigh-Mardon Pty Ltd, Australia, incorporated three Round Kiwi stamps (green, blue and red) and the Taipei '93 logo. In addition, a rooster was included in the design to commemorate 1993 as the “Year of the Rooster.” While the blue Round Kiwi was produced using the intaglio process, the other two stamps were produced using lithography. The error was described in the auction catalogue as follows:

*“1285 * 1993 Taipei 93 m/s, error blue \$1 Kiwi misplaced 3mm downwards (“NEW ZEALAND” perf through) & albino embossing “ONE DOLLAR” visible in white crescent at top. MUH...Est...\$400.” [8]*



This is an interesting print shift error rather than a shifted colour error. The \$1 blue Kiwi stamp is printed 3mm downwards in comparison to the other two \$1 Kiwi stamps. Not surprisingly, if the perforation is done correctly, the print shift will result in a perforating error on the \$1 blue stamp. And as can be expected, the perforation cuts the round Kiwi stamp at the bottom resulting in the name of the country falling outside the stamp at the bottom and the top of the stamp having a larger white border. While the \$1 blue stamp is misperforated, the cause of the misperforation is not a malfunction of the perforator but a shift in the printing of the stamp.

Double Colors

Commemorative – Anniversaries – 1972

On April 5, 1972, New Zealand Post issued a set of postage stamps to commemorate anniversaries. The set consists of five values (3c, 4c, 5c, 8c and 10c). The 3c stamp commemorates the

100th Anniversary of the Local Council Government at Wanganui. It is printed in colours of blue, black, grey and plum. The stamp was designed by M. Cleverley, printed by Harrison and Sons, England using lithography and printed in panes of 100. This error was described in the auction catalogue as follows:

*“2090 * 1973 3c Wanganui error, double plum colour (sky) resulting in blurred (thin) inscription etc. (Variety unlisted by CP) with normal for comparison. MUH. Est...\$125.” [9]*

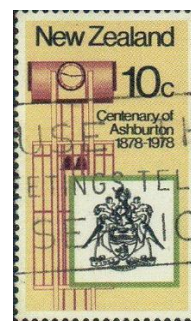


This error does not stand out. This is reflected in the price of the error compared to other more noticeable errors.

Commemorative – Anniversaries – 1978

On March 8, 1978, New Zealand Post issued a set of postage stamps to commemorate anniversaries. The set consists of four values (10c, 10c, 12c and 20c). One of the two 10c cents stamps commemorates the Centenary of Ashburton. This stamp is printed in colours of beige, brown, black and green. It was designed by M. Durrant, printed by Harrison and Sons, England using lithography and printed in panes of 100. This error was described in the auction catalogue as follows:

“2108 U 1978 10c Ashburton Centenary, variety double print of black. Unlisted by CP, FU (machine pmk). Est...\$100.” [10]



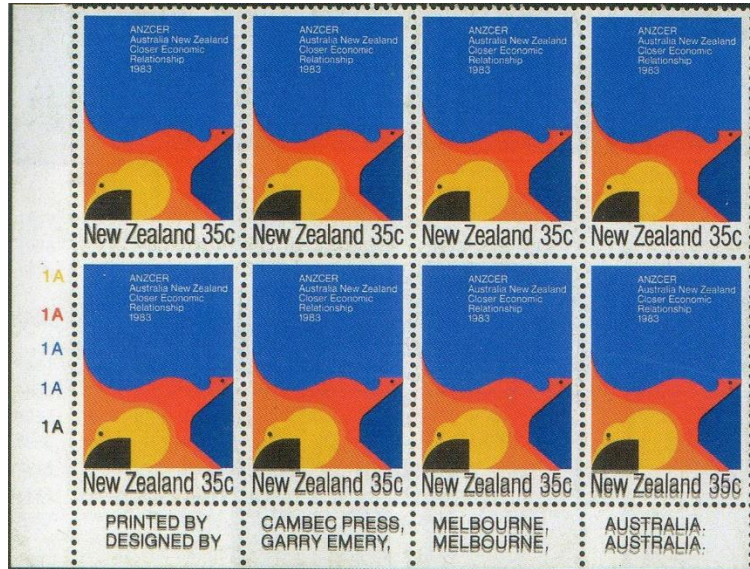
This error is also not very noticeable. This is reflected in the price of the error compared to other more noticeable errors.

Commemorative – Anniversaries – 1983

On February 2, 1983, New Zealand Post issued a set of postage stamps to commemorate anniversaries. The set consists of five values (24c, 30c, 35c, 40c and 45c). The thirty-five cents stamp commemorates ANZCER i.e. the signing of the Closer Economic Relationship (CER) agreement between Australia and New Zealand. The stamp is printed in colours of blue, yellow, orange and black. It was designed by M. Durrant and printed by Waddington Security Print, England and Cambec Press,

Australia using lithography in panes of 100. This error was described in the auction catalogue as follows:

“1202 * 1983 35c ANZCER. Error double black in imprint blk of 8, most noticeable in lowermost row & imprint. Unique & not listed by CP. MUH. Est...\$1,000.”[11]



The doubling of the name of the country on the last row of stamps in the pane is very noticeable. This doubling does not appear on stamps in other rows of the pane.

Commemorative – Heritage Achievers – 1990

On May 16, 1990, New Zealand Post issued a set of postage stamps to commemorate its Anniversaries. The set consists of six values (40c, 50c, 60c, 80c, \$1 and \$1.50). The 40c stamp commemorates Grace Neill. She initiated the registration of nurses - now commonplace around the world - and was highly influential in raising standards of care through training, examination and instigation of legislation. The stamp is printed in colours of brown, black, green and light green. It was designed by E. Williamson and printed by Leigh-Mardon, Australia using lithography in panes of 100. The auction catalogue describes this multiple print colour print error as follows:

“1520 * 1990 40c Achievers (nurse Grace Neill) errors: treble brown & double green owing to pre-printing paper crease

in vertical pair with normal for comparison. MUH...Est. \$750.” [12]



This multiple print error is very pronounced and the cause of this error, according to the auctioneers, was a pre-printing crease.

Conclusion

In this article, print shift errors and double colour errors of New Zealand stamps that were offered for sale in 2013-2014 auction catalogues were reviewed. A few of them are quite stunning. Very little information exists on how many of these errors were found, normally a very useful statistic. To guess this statistic, one would have to know the exact cause of the error and the format in which the error was discovered. 🌟

Bibliography

- [1] Auckland City Stamps, Public Auction No. 6, March 11, 2014, p. 44, plate 5.
- [2] John Mowbray, Postal Stamp Auction No. 448, January 2014, p. 42 & p. 52.
- [3] John Mowbray, Postal Stamp Auction No. 448, June 2013, p. 38 & p. 49.
- [4] John Mowbray, Postal Stamp Auction No. 441, June 2013, p. 39 & p. 49.
- [5] John Mowbray, Postal Stamp Auction No. 441, January 2014, p.42 & p. 52.
- [6] Auckland City Stamps, Public Auction No. 6, March 22, 2014, p. 45, plate 5.
- [7] John Mowbray, Postal Stamp Auction No. 449, February 2014, p.47 & p. 53.
- [8] John Mowbray, Postal Stamp Auction No. 450, March 2014, p.43 & p. 54.
- [9] John Mowbray, Postal Stamp Auction No. 445, October 2013, inside back cover.
- [10] John Mowbray, Postal Stamp Auction No. 445, October 2013, inside back cover.
- [11] John Mowbray, Postal Stamp Auction No. 447, December 2013, p.40 & p. 53.
- [12] John Mowbray, Postal Stamp Auction No. 444, September 2013, p.49 & p. 53.

EFO in the Mailbox

Cemil Betanov

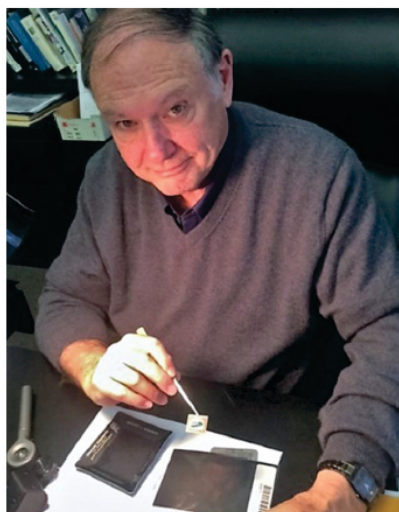
After being Editor here for so long, I have taken the habit of analyzing an envelope before opening it. Some time ago, I received an envelope from John Hotchner. Imagine my surprise, when I noticed it was cancelled on July 9th, 2019! I thought the PO person had “collaborated” with John, but John had no idea!

So, unless given some TLC, this error would turn into a pumpkin on July 10th, 2019, right? No, for two reasons: First this article dates it to 2016, and second, I took a picture of it with the Wall Street Journal in July 2016. Two proofs that it is indeed an error! Good job, John! ;-) 🌟



The Philatelic Foundation Authenticates the Real McCoy!

On Monday, April 4, 2016, a representative of a leading rare stamp auction house brought a Jenny Invert to The Philatelic Foundation's New York offices for authentication on behalf of a potential consignor. The PF's experience and expertise in authenticating this iconic United States rarity is unrivaled, having previously issued Certificates of Authenticity for 84 of the 100 stamps from the original error sheet of the "upside down airplane stamp," including all six of the existing blocks.



The PF's staff immediately began the expertization process, which was led by Executive Director Larry Lyons and Curator Lewis Kaufman. Matched against the PF's detailed records, photos and electronic scans of the Jenny Inverts, the evidence quickly pointed to the possibility that the "patient" was one of the two missing stamps from a famous block of four Jenny Inverts. The block, which was previously owned by Ethel McCoy, was stolen from its exhibition frame in 1955 during an American Philatelic Society convention in Norfolk, Virginia.

The PF staff identified the "patient" to be position 76 from the error sheet of 100. At some time following the block's theft, it was broken into four singles, altered to disguise their identification as stamps from the stolen block. Upon close examination, position 76 was found to have been reperfored at its left side to remove traces of the vertical red guide line from the tips of its perforations. The American Philatelic Society and law enforcement were immediately notified of the identification of this long lost Jenny invert as the Real McCoy!

Collect with Confidence – with a PF Certificate



The Philatelic Foundation

341 West 38th Street, 5th Floor

New York, NY 10018

Phone: 212-221-6555 • Web: www.philatelicfoundation.org

WESTPEX – A Stamp Show Worth Hooting About

Daniel S. Pagter, P. O. Box 336, San Geronimo, CA 94063-0336

Over the years, other EFOCC members and I have had interesting times at WESTPEX, the largest APS World Series of Philately qualifying show in the western USA. The show has been located primarily in San Francisco proper, but moved to Oakland once in 1984 due to the host hotel suffering a major fire. The move was to a wonderful site, but not San Francisco. The APS STaMpsHOW '92 used the same Oakland location for their main annual summer show. WESTPEX '97 was skipped and replaced by Pacific '97, that international show held in the USA once in a decade. For the last ten years or so it has been held right next to the San Francisco Airport, overlooking San Francisco Bay with miles of view. Of course there have been EFOCC connections during those years and that year's 56th WESTPEX show in late April was no exception.

In 1986, during brunch at the Lehr's Greenhouse Restaurant, one of those you-have-to-eat-there-once San Francisco locations, I was seated with John Hotchner and Jacques C. Schiff Jr., the legendary dealer specializing in EFOs and other detailed US areas, such as rare plate numbers. John and I had known Jack for some time and we could see he was nearly beside himself with excitement. It was then when he told us of his latest deal involving what became known as the \$1.00 CIA Candlestick Inverts. As Jack knew he was speaking to two philatelic journalists, he knew he was going public with the new information for the first time.

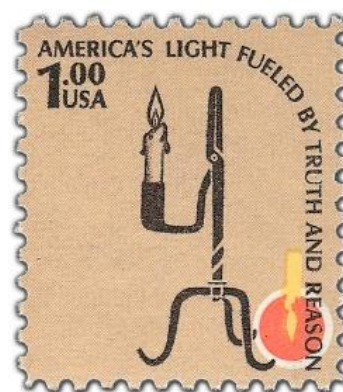
I, with the EFOCC Board's approval, sought and succeeded in getting the EFOCC as a guest society for WESTPEX. My hope was for the 10th anniversary of the EFOCC, but we gladly accepted 1989, the 30th annual WESTPEX Show and the EFOCC's 11th anniversary. The EFOCC did not share the spotlight with any other societies that year and made the exhibit page count requirement without issue. That, including the fact some members were judges at the show and could not enter their own exhibits in competition. WESTPEX was producing show covers then and the EFOCC held a contest among members and the winning design for the show cancellation with appropriate design element errors was approved by WESTPEX and the USPS.



The Cachet using the \$1 Americana "CIA" Invert was added and hundreds franked with a 4¢ Dag Hammaraskjold Invert and



21 cents in other postage such as the 21.1¢ mail car of the transportation coil series with inking flaws. The cachet went on to win a Gold in the first National Show Cachet Competition held later that year at ALPEX, placing 3rd overall out of 32 entries.



That year, on Friday, the first day of the show, I was looking over cover stock at a dealer's table. A gentleman came up sat down and started to complain about his thwarted efforts to get the word out about his new find now that he had good certificates for the items. Upset because Linn's rejected his news release as self-serving. A discussion occurred, and now here is the story which I am writing on the day of California's Presidential Primary Election. I mention that only because I am discussing two different parliaments and species of philatelic owls which have been observed, identified and confirmed.

The Giori Press may be long gone from the Bureau of Engraving and Printing (BEP), not to mention the BEP no longer prints US stamps, but it is still creating news in the philatelic world. It was a combination rotary press which used both intaglio and lithography printing methods.

The biggest historic note for the BEP's old Giori Press was the production, then release of the first invert error after the famous 24¢ Inverted Jenny of 1918. In 1962 the 4¢ Dag Hammarskjöld was printed on the sheet fed Giori Press in two press passes and a few panes were produced with the yellow lithography background color inverted. These major errors were sold to the public. Later a special printing of stamps for general

release was made on the press with the yellow purposely inverted for that press run and released to the public through normal postal channels. The outcry raised then served to preclude future reprinting of discovered printing related errors, especially future inverted errors. Design errors, not so much as shown by the Legends of the West story. But when the \$1 CIA Invert, also a lithographed and intaglio sheet printed stamp surfaced, no discussion of a special print run was made. The government did unsuccessfully try to get them out of the public's hands but did not threaten a special reprinting.



The Giori Press produced the Wildlife Conservation Issue of 1978 which pictured four different owls species native to the United States and now 38 years afterward a new major error was discovered for the issue. Not an invert error, but a colors missing error, still a very noteworthy and highly collectible.

Specifically two panes were discovered in a large box of discount postage and other philatelic materials purchase by the discoverer, Dan Burger of San Mateo California. Dan, a serious stamp collector, who specializes in areas other than US issues and does not collect EFOs, noticed the stamps looked different than normal and suspected that colors were missing on both panes and the black intaglio was also "in error" on one pane. I should note here from a technical standpoint of EFOs and philately that when a color is completely missing it is an "error." When a printed element is out of register, it is considered a "freak" unless the misregistration results in complete absence of a design or production element or the inversion of an element. Freaks can occur along a long continuum of variance or "gray zone" between extremes. Errors are elements which occur, or not, with no gray zone. Colors are missing or they are not missing, perforations are missing or not, something is inverted or it is not. In short, errors are easily exactly reproducible, freaks are not.

Dan then did what needs to be done in finds such as this, he sent the panes in for expertizing choosing, in this case, the American Philatelic Expertizing Committee (APEX). The



APEX after careful review, on March 3, 2016, issued APEX Certificates 215187, dated March 3, 2016, which read, "United States, Scott 1760a variety with litho yellow and magenta omitted, unused pane of 50, full original gum, never hinged (one position stuck to paper three others slightly disturbed gum), genuine." and 215188, which reads, "United States, Scott 1760a variety with intaglio black shift and litho yellow and magenta omitted, unused pane of 50, full original gum, never hinged, genuine in all respects." It is appropriate to point out that currently there is no Scott 1760a. Scott 1760 is one of four designs which together are assigned, "Scott 1763a, Block of Four, #1760-1763."

Dan Burger stated when he was in discussions with the Scott Catalog Editors that the Scott editors told him the errors would be included in the 2017 edition of the Scott United States Specialized catalog. We will have to wait until that is released to see what the assigned number or numbers will be. If other entries are a guide, one sub-letter will be issued for the two missing colors and a note added that one pane has misregistration of the

American Philatelic Society

Expert Committee Report

Members of the American Philatelic Expertizing Service have examined the item submitted and it is their opinion that it is:

United States, Scott No. 1760a variety with litho yellow and magenta omitted, unused pane of 50, full original gum, never hinged (one position stuck to paper, three others slightly disturbed gum), genuine.



Don De Mott No. **215187**
(APEX Authorized Signature)
C. M. Smith Date: **3/3/2016**
(Administrative Signature)

The American Philatelic Expertizing Service
A Service to Philately Since 1903
100 Match Factory Place, Bellefonte, PA 16823 USA
Phone: 814-933-3803 • Fax: 814-933-6128
Website: www.stamps.org

apex
A cooperative service offered by the American Philatelic Society (APS) and the American Stamp Dealers Association (ASDA).

American Philatelic Society

Expert Committee Report

Members of the American Philatelic Expertizing Service have examined the item submitted and it is their opinion that it is:

United States, Scott No. 1760a variety, intaglio black shifted and litho yellow and magenta omitted, unused pane of 50, full original gum, never hinged, genuine in all respects.



Don De Mott No. **215188**
(APEX Authorized Signature)
C. M. Smith Date: **3/3/2016**
(Administrative Signature)

The American Philatelic Expertizing Service
A Service to Philately Since 1903
100 Match Factory Place, Bellefonte, PA 16823 USA
Phone: 814-933-3803 • Fax: 814-933-6128
Website: www.stamps.org

apex
A cooperative service offered by the American Philatelic Society (APS) and the American Stamp Dealers Association (ASDA).

intaglio black. A similar approach was taken for Scott 1800, the 1979 Santa Clause Christmas Tree Ornament.

The first certificate is for a properly registered pane with all stamps missing the yellow and magenta lithography which is an upper left position pane. The latter certificate for the pane with both the yellow and magenta missing and the misregistration of the black intaglio is an upper right position pane. The APEX Certificates referenced these as Scott 1760a varieties as there was no prior Scott identification number for missing colors as these newly discovered errors are the discovery copies. Some folks have assumed that since one is upper right and one is upper left with both panes found together, they came from one printing sheet. However, due to the intaglio misregistration on one pane and not the other, these errors originated from different press sheets even though one is upper left and one is upper right. That also means that the three other positions of each error sheet may have made it into public hands. So there are six, not two panes for which to search.

The errors present an interesting situation if they are broken up from the full panes. The Scott number 1763a refers the block of four with different owl images. The owls appear as four different designs which are usually collected as a block of four. With the layout of the panes four rows produce ten blocks of four, including one plate block and one zip block. The fifth rows produce five each of two different single owl designs. That will lead to some creative decision-making if someone ever decides to split up the panes for sale and force Scott to add additional numbers for the individual Scott numbers 1760 and 1761. The great grey owl (Scott 1760) and the saw-whet owl (Scott 1761) are the only designs in the fifth row of each of these two panes.

Printing on the sheet fed Giori Press is such that the press produces the image of 200 stamps (and all other selvage markings) on the one sheet with the entire design (all elements) printed in multiple passes. The printing sheets are cut into four panes identified as Upper Left, Upper Right, Lower Left and Lower Right each with one plate number at one corner of each pane. The panes are then stacked and packaged into the units which are eventually forwarded to the USPS for distribution and sale.

Normally such incompletely and incorrectly printed stamps would be marked, culled and destroyed without ever being forwarded to the USPS for distribution and sale. Such examination for incomplete or imperfect press sheets is normal operational procedure and routine, as such waste or spoiled material is expected by the press operators. Waste always occurs during normal press operations and as a part of normal operations efforts are made to identify, separate and destroy this press waste. If such material is salvaged and not destroyed but reaches the philatelic market through misdirecting waste for destruction or "the backdoor", it is referred to as "Printer's Waste" in philately. The Nixon Invert was one such example of "back door" escape to the public, also a Giorgi press item privately printed as opposed to BEP produced. Material which is missed by press operations and missed by USPS personnel when selling over the counter are legitimate freaks or errors. In



the case of fully missing colors they are called “errors” in philately, misregistration is considered and called a “freak” in philately.

Clearly these two sheets or rather one pane for each of two press sheets, were not so identified for destruction at the BEP or noticed as such by USPS sales clerks. While the three other panes from each press sheet may have been captured and culled by BEP staff, it remains possible some or all of the three companion error panes of each of these two press sheets did get to the Postal Service but were not identified and culled from stock, rather they were sold to the public just as these two from the new find were.

The properly registered two color missing pane are more likely to have survived examination and been sold. The design is still nice but less colorful with the missing colors. The error might have never been noticed by the purchaser and used for mail with the recipient not noticing the missing colors either. This is less likely for the shifted black intaglio panes as the shift makes the design look incorrect and stand out as abnormal which makes those varieties more likely to have been noticed and culled. If sold over the counter they would be likely more noticeable by the purchaser or recipient of mail franked with the misregistered, color missing, stamps. Yet no other stamps have been reported. Remember, only a small percentage of the total stamps sold by the Postal Service are ever viewed by knowledgeable collectors.

Dan was made a six figure offer for these at WESTPEX and that is not “owl feed.” He declined to sell at that time. He plans to hold them until the Scott listing is published. I do not know if he will sell them as panes or break up the panes for sale. I recommended two auction firms to him as well as suggesting if time is not an issue, he may wish to sell these in other than full panes, especially the just color missing ones. Given the subject matter of birds, specifically owls, these will have a larger collector interest than many other color missing errors as both “birds” generally and the more narrow “owls” are popular

topical collecting areas, areas which cross far more than just US stamps.

For the non-birders and non-wildlife biologists, the term “parliament” is the correct collective noun for a gathering of multiple owls. Something about looking wise and being in a group is the basis for that term. I will not comment on the wisdom of the politicians currently running for office from any of the many political parties, major or minor, nor do I think the owls give much of a hoot either -- perhaps parliament is on point.

Shall we now all explore indoor bird watching, especially owls? Happy hunting. 🌟

Perforations – Not Spending Big Bucks

John M. Hotchner, P. O. Box 1125, Falls Church, VA 22041, jmhstamp@verizon.net

We continue in this issue of *The EFO Collector* with our review of EFO categories that can be collected without breaking the bank. When I began with this topic I thought there might be maybe three columns in the subject. And here we are having doubled that – with at least a few more columns to go.

So far in this series, we have talked about:

Part I covered color misregistrations, shifted perforations, miscut coils and booklet panes, color smears, web splices and plate varieties.

Part II covered color variations, perfins, plate numbers and other marginal markings, and mistakes in cover cachets.

Part III covered printing gaps, wet & dry prints, meter flaws, cancellation varieties, and Giori inking varieties.

Part IV covered doctor blade lines, gutter snipes, solvent wash, coil leader strips, and design errors.

Part V covered precancel EFOs, souvenir sheet freaks, and do-it-yourself creations using genuine stamps altered to mime genuine EFOs or EFOs that look odd but can’t exist or are not known to exist.

Repairs and Rejection Markings

In this installment we will start with repairs and rejection markings. We dipped into this subject in Part I when we talked about web splices; which are common in the era of the Prexies.



Figure 1.



Figure 1 continued.

At the risk of repeating myself, the examples in Figure 1 are good web splice samples from that time period. They were created in the process of splicing huge rolls of paper to form a continuous printing base (called a “web”) that fed into the rotary press so it could operate continuously without having to stop and be rethreaded every time a roll of paper ran out.

Briefly, the leading edge of roll 2 was overlapped and taped onto the trailing edge of roll 1; using cellophane tape. Usually, the press operator monitoring this process would mark the area affected with a red grease pencil, as can easily be seen in the top stamp of the 3¢ Prexie pair in Figure 1; not so easily seen in the top stamp of the 3¢ Defense strip. This rejection marking alerted inspectors at the end of the printing, gumming and sheeting out process that affected sheets should be taken out of the pile of finished work and destroyed.

But this was a clearly unreliable process based on the commonality of web splices today. Average cost is \$15 to \$25 for a block of common values. It is worth noting that the overlap was normally wide enough to result in double paper freaks, with the paper below being blank, as demonstrated in the 3¢ Defense strip in Figure 1.



Figure 2.

Another splice that is fairly common and generally inexpensive is that used to repair split or otherwise damaged coils. An example is shown back and front in Figure 2. For a long time the Bureau of Engraving and Printing (BEP) tried to excise and destroy these splices, but in more recent times, the producers of US stamps – BEP, and then private printers – gave up on that policy. They are not routine, but any given coil roll could have one.

There are several types of repair and rejection markings that are expensive (e.g. red tape repairs, kraft paper repairs – combined with rejection markings -- on 4th Bureau Issue waste,

hand stamped Bureau accounting notations, etc.), but there are also several in addition to the splices described above that can be found with minor cost, if you know what you are looking for.



Figure 3.

In Figure 3 is a block of the 2¢ Frank Lloyd Wright. Note the vertical black spray on the second and third vertical rows. One sees this on plate blocks, but most collectors don’t realize that this is a rejection marking – an early automated example. From the same era is a rejection marking found only on coils. In general, it would be tossed by collectors as being damaged material. See the 1¢ strip in Figure 4. After printing on the Cottrell press, coils were examined on equipment that slit the web, which would in turn activate a feature on the coiling machine to excise identified defective work for destruction.

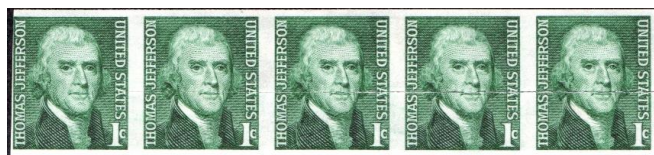


Figure 4.

The coiling machine dropped out portions that had been slit through the middle, and a certain number of stamps on either side. Stamps two through five of the 1¢ imperf strip has been sliced through the middle.

We will continue this series in the next issue of the EFOC. Meantime, questions, reports of your finds, and comments are always welcome. You can write to me at the address shown below. ★

If you have a question, or a possible topic for John to cover in a future issue, please write to him at P.O. Box 1125, Falls Church, VA 22041-0125, or e-mail him at jmhstamper@verizon.net.

Treasurer’s Report

David Hunt
dhhunt@ptd.net



Report for the Quarter January 1 – March 31, 2016

| | | |
|--------------------|---------------------------|-----------|
| Beginning balance: | | \$3707.53 |
| Income | Dues | \$1372.00 |
| | Transfer from Life Member | 196.67 |
| | Fund | |
| | Donation | 10.00 |
| Expenses | Printing costs | (702.20) |
| | Postage costs | (261.96) |
| | Award Ribbons | (50.35) |
| | Auction Insurance | (249.60) |
| Ending balance: | | \$4022.09 |

Respectfully submitted,

David H. Hunt, Treasurer ★

Editor’s Note: Due to space constraints, we will have the Secretary’s Report in the next issue.

EFO Collectors' Club PRESS RELEASE

June 1, 2016

Jacques C. Schiff, Jr. Inducted into Errors, Freaks and Oddities Collectors' Club Hall of Fame

The Errors, Freaks and Oddities Collectors' Club (EFOCC) is proud to announce the induction of retired auctioneer Jacques C. Schiff, Jr. of Hackensack, New Jersey, as the newest member of the EFOCC Hall of Fame.

Schiff was a pioneer in the realm of EFO philately; featuring this collecting area in his auctions since he began in the business in the 1960s. Over 50 years, his nearly 340 auction catalogs are a virtual chronicle of what exists in U.S. EFOs. In addition, he wrote long-running columns on EFOs in the philatelic press, and was a frequent visitor to the security printing plants that produced U.S. stamps to assure that he knew the cause of errors and that they were genuine.

His firm made a specialty of bringing newly discovered errors to market, getting them certified, and making sure that, when justified, they got catalog listings. The \$1 Candleholder "CIA" Invert is a good example.

He was and remains a scholar in printing technology, and counted among his friends and contacts many principals in the Bureau of Engraving and Printing, including the late George Brett. He served as a mentor to Steven Datz, John Hotchner, and Jim Kloetzel, among others, and he continues in retirement to be a consultant for the Scott U.S. Specialized Catalogue.

For many years, Schiff was well-known on the show scene as a sometimes retail dealer, but more often a booth-holder to be available to current and potential customers, and as a popular lecturer on how auctions work, and author of "How to protect yourself from buying doctored stamps."

In summary, the collectors of EFO material owe a huge debt of gratitude to Jacques Schiff, and the EFOCC is delighted to recognize his contributions by induction into its Hall of Fame.

Contact: John M. Hotchner, jmhstamp@verizon.net



Editor's Note: Award presented was signed by EFOCC President Wayne Youngblood.

The EFO Collector | www.efocc.org

From Your Editor

(continued from p. 3)

Board to track the winners, the ribbons will be sent out with a SASE, which the juries can use to report the winners to the EFOCC.

Dan Pagter

We are happy to have in this issue an article by Dan Pagter, If you browsed our website, you will recall Dan as a very active EFOCC Member and one of the drivers of many EFOCC activities.

Website

You might have noticed that our website has been quite dormant recently. This was mainly due to the fact that I have been buried in work recently. However, despair not, some updates will be coming soon. Incidentally, if you looked for pictures of the last Auction, well, I completely forgot to post them. I will be more careful in the future. At least one person complained to Dave, that means at least one person looked for it.

Happy hunting,

Cemil ☺

.....

Auction 144 Notes

I have had experiences in bidding in auctions where I purchased a lot only to find in another auction a month or two later a better example of the item. Then I wish I hadn't spent the money on the first item so I could buy the better one. I try to keep this in mind when I put the auction together and, if I have similar lots, put them together so you can make a decision between or among them. Examples of that in this auction are lots 115 and 116, which are both examples of the U540 stamped envelope with misplaced surcharge, one more misplaced than the other. You might prefer the greater misplacement, or you might prefer the less expensive example; it is your choice.

Similarly, I have included five examples of the misperfed 13¢ Lafayette stamp. To be sure, some are rather similar, but you can make a choice. If you want to improve your chances, you may make an "or" bid. For example, let's say you would like lot 39, but if you were outbid, you'd be satisfied with lot 43. On your bid sheet you would list lot 39 with bid \$X OR lot 43 bid \$Y. If you were the high bidder on lot 39 you would win it and lot 43 would be scratched from your list. If you did not win lot 39, then your bid on lot 43 would come into play and you would have a chance to win that lot.

When you look at lots 52 and 53 in this auction, you might think your eyes are playing tricks on you or that my scanner is not working well. I can assure you neither is the case. Both are color misregistrations that cause the design to appear blurry. Lot 52 is especially dramatic.



EFOCC Auction Rules for Consignors

Preparing Lots

Please use a blank form from a recent copy of the EFO Collector. Photocopies are fine. Please use a separate form for each lot.

Secure each lot to the front of the form; attach large lots to the reverse side. Protect all items with mounts, glassine, etc., and stiffeners, if necessary, but **be sure** item/items can be easily removed by Auction Director for examination and/or photographing. Do not use staples. Attach each item so that the description can be easily read. A simple and easy way to mount lots is to do so on dealer sales cards, or in glassines mounted face down for easy removal.

Include a reserve (minimum bid) or write "none". Lots may be revised to accurately describe items; or returned if necessary. Your name and EFOCC number must be on the consignment form, however, to preserve anonymity, these are removed from the consignment sheet before sending item to successful bidders.

Send consignments to David Hunt, 45 Fairway Drive, Denver, PA 17517. Use **insured** or **registered** U. S. Mail.

Consignor Fees

Consignor commission is 10% of the hammer price, with a minimum cost of 50 cents per lot.

Unsold lots incur a 50 cent fee per lot, and the consignor pays return postage and insurance.

Expenses and printing constraints make it impractical to picture every lot, especially those which are large in size. The EFOCC will exercise discretion in picturing lots.

Consignor Special Instructions

To save postage and labor, EFOCC can automatically re-submit unsold lots with lower minimums in a future auction, **if you instruct EFOCC clearly what to do**.

If you send duplicate or very similar lots, it is consignor's responsibility to state clearly if you would like to have these placed in different sales. Generally, EFOCC places all items received in the same sale to minimize paperwork.

Consignment/Payment Timing

EFOCC receives consignments continually and prepares them for subsequent sales, roughly on a first-in/first-out basis. However, large lots may be spread over several auctions.

After the close of each sale, unsold lots are offered to bidders on a first come-first served basis for \$1 over the reserve with no buyer's commission or postage. This increases total sales, makes more bidders happy, and sells more lots for consignors, all for very little additional effort.

EFOCC needs approximately one month after auction's closing date to determine successful bidders, prepare and mail invoices, mail lots, receive payment from winners, list after sale lots and accept their offers, etc., etc. Thus, consignors can expect to receive payment about four to six weeks after an auction closes.

| Lot # | Catalog | EFOCC Auction #144 – Lot Descriptions | Cat Val | Minimum Bid |
|-------|---------|--|----------|-------------|
| 1 | 900a | 2¢ Defense pair, imperf between. Blind perfs between stamp and selvage. Light pencil number on back. NH | | \$20.00 |
| 2 | 1615cf | 8.4¢ Piano imperf coil pair with Newark, NJ precancel. Small area of missing gum on right stamp, appears to be natural. NH | \$25.00 | \$21.00 |
| 3 | 2092a | 20¢ Preserving Wildlife marginal single imperf vertically. NH | | \$100.00 |
| 4 | 1304 | 5¢ Washington coil strip of four, misperfed and miscut. NH | | \$13.00 |
| 5 | 1617b | 10¢ Petition imperf coil pair. Waste from end of roll - damaged. NH | \$50.00 | \$25.00 |
| 6 | 1596b | 13¢ Eagle and Shield with yellow omitted. NH | \$100.00 | \$80.00 |
| 7 | 1570 | 10¢ Jefferson Memorial strip of four with misplaced vertical perfs resulting in stamps of three different widths. NH | | \$20.00 |
| 8 | 1471a | 8¢ Christmas Angels with pink (angel's face) omitted | \$100.00 | \$75.00 |
| 9 | 1151 | 4¢ SEATO misperf NH | | \$15.00 |
| 10 | 2607c | 23¢ USA imperf coil pair NH | \$65.00 | \$55.00 |
| 11 | 2459a | 10¢ Tractor Trailer imperf coil pair NH | \$110.00 | \$90.00 |
| 12 | 2263a | 20¢ Cable Car imperf coil pair NH | \$50.00 | \$35.00 |
| 13 | 1008 | 3¢ NATO 2-way misperf NH | | \$25.00 |
| 14 | 1519 | 10¢ Crossed Flags misperfed pair NH | | \$15.00 |
| 15 | 1519a | 10¢ Crossed Flags imperf pair NH | \$35.00 | \$20.00 |
| 16 | 498a | 1¢ Washington vert pair horizontally imperf. NH. | \$750.00 | \$475.00 |
| 17 | 1734 | 13¢ Indian Head penny misperf NH | | \$10.00 |
| 18 | 1363c | 6¢ Christmas yellow omitted NG | \$50.00 | \$35.00 |
| 19 | 2211 | 22¢ Duke Ellington horizontally imperf single with margin NH. Cat. val. Is for a pair. | \$600.00 | \$350.00 |
| 20 | 557 | 5¢ T. Roosevelt printer's waste margin pair NH (yes, it does have gum) | | \$30.00 |
| 21 | 1297c | 3¢ Francis Parkman imperf and miscut coil pair - precanceled. NH | | \$25.00 |
| 22 | 1297c | 3¢ Francis Parkman imperf and miscut coil strip of three - precanceled. NH | | \$15.00 |
| 23 | 3055 | 20¢ Pheasant - die cuts do not go through paper. Right stamp creased. NH | | \$7.00 |
| 24 | 1059 | 4.5¢ Hermitage line strip of five with tiny part of plate number. Fifth stamp is damaged at upper right. NH | | \$13.00 |
| 25 | 669 | 1¢ Nebraska vertical pair with 'stretched' overprint on top stamp NH | | \$20.00 |
| 26 | 1608 | 50¢ Lamp with black color shift down NH | | \$25.00 |
| 27 | 1896b | 20¢ Flag booklet - vertical perfs shifted past flag pole in right stamps NH | | \$30.00 |

EFOCC Auction Rules for Bidders

How to Bid

Please bid on a consignment form from a recent EFO Collector. A photocopy is fine. Include your EFOCC membership number. For new bidders and non-EFOCC members, please include your APS membership number. Sign your bid sheet to acknowledge acceptance of the EFOCC auction rules; unsigned forms cannot be accepted. Submit bids to David Hunt, 45 Fairway Drive, Denver, PA 17517, e-mail to dhhunt@ptd.net.

Bidding Precautions

Minimum bids are not estimates, but are true reserves established by the consignors. Bids below the listed reserve will not be accepted.

Bidders are responsible for inaccurate bids. Bids do not have to be typed, but, please, be sure numbers and amounts are clearly legible. Confirm phone and e-mail bids with a written bid sheet.

Auction Bid Increments

| Bid Level | Increment |
|---------------|-----------|
| \$1 to \$9.99 | \$0.50 |
| \$10 to \$49 | \$1.00 |
| \$50 to \$99 | \$2.50 |
| \$100 to | \$5.00 |
| \$500 and up | \$10.00 |

Please use the following increments when bidding and/or assigning reserves to consignments. Lots are sold to the highest bidder at one advance over the second highest bid.

EFOCC reduces non-conforming bids to the next lower increment. For example, a bid of \$39.50 will be entered as \$39.00.

Special Bidding Instructions

As the EFOCC auction is a small auction, special instructions cannot be easily accommodated.

EFOCC cannot accept "BUY" bids, nor "INCREASE BY..." bids. **Please, make your final, best, and highest bid and you will get the lot at the lowest price available.**

Bidders' Payments

A 10% buyer's premium is added to the hammer price of each lot. Buyers pay postage, plus insurance on lots valued at over \$10.00.

Payment is due upon receipt of invoice. If you will be out of town for a while just after an auction closes, or are moving to your summer home about that time, please let EFOCC know at the time you place your bids.

Returning Lots

Within five (5) days of receipt of awarded lots, you may return any lot which is not described correctly provided such lot is still in its original condition. If an expertizing certificate is a condition of bidding, please inform EFOCC of this before auction closes.

One Final Request

Please **bid generously on donation lots** whose monies go entirely to the benefit of the EFOCC.

| | | | | |
|----|---------|--|------------|------------|
| 28 | 733 | 3c Byrd Antarctic Expedition with pre-printing paper crease. NH, but small area of gum loss at lower right | | \$25.00 |
| 29 | 2352 | 20c Treaty of Paris misperf with gutter perfs inside stamp NH | | \$20.00 |
| 30 | BK117a | 15c O. W. Holmes booklet, vertical perfs shifted left 11mm. NH | | \$15.00 |
| 31 | BK141 | 20c Longhorn booklet, both panes with vertical perfs shifted left 9mm NH | | \$45.00 |
| 32 | 1487 | 8c Willa Cather misperf NH | | \$20.00 |
| 33 | BK142a | 20c Longhorn booklet, reversed assembly, bottom pane on top. Back cover of booklet missing. NH | | \$35.00 |
| 34 | 1485 | 8c Robinson Jeffers diagonal misperf NH | | \$60.00 |
| 35 | 1280c | 2c Frank Lloyd Wright booklet pane, miscut with EE bars | | \$25.00 |
| 36 | 805b | 1.5c Martha Washington imperf between pair, precanceled with gum, hinge mark | | \$17.00 |
| 37 | 805b | 1.5c Martha Washington imperf between pair, mint NH. About half the perfs between stamp and margin are blind, the rest not evident. Small black mark at upper right of right stamp. | | \$90.00 |
| 38 | 1904 | 10.9c Hansom Cab misperfed pair precanceled but with gum NH | | \$6.00 |
| 39 | 1716 | 13c Lafayette misperf NH | | \$35.00 |
| 40 | 1716 | 13c Lafayette misperf with gutter NH | | \$25.00 |
| 41 | 1716 | 13c Lafayette misperf NH | | \$20.00 |
| 42 | 1716a | 13c Lafayette missing red due to misperf NH | | \$135.00 |
| 43 | 1716a | 13c Lafayette misperf pair with top stamp missing red NH | | \$175.00 |
| 44 | 1706-9 | 13c Pueblo Art misperfed strip of four NH | | \$35.00 |
| 45 | WX92 | 1938 Christmas Seal imperf pair (proof) NH | | \$2.00 |
| 46 | 1758 | 13c Photography vertical pair misperfed so that gutter is within stamp. NH | | \$35.00 |
| 47 | RW53 | 1986 Duck Stamp, engraved black shifted up 1.5mm NH | | \$25.00 |
| 48 | 1509a | 10c Crossed Flags pair, imperf between, blind perfs between stamps and selvage NH. Light bend at lower right, mostly in selvage but does affect right stamp. | \$40.00 | \$25.00 |
| 49 | UX39a | 1c Postal Card with vertical surcharge reading up. Rare. Mint | | \$75.00 |
| 50 | 1402 | 8c Eisenhower coil miscut with partial plate no. 32726 used on commercial cover postmarked July 21, 1971. Stamp has one pulled perf at right. | | \$6.00 |
| 51 | 1632c | 13c Interphil plate no. block with engraved colors shifted down so that the top two stamps are missing the red color ("USA 13c"). This was the piece sent to Scott to get the listing. Believed unique. NH | | \$1,500.00 |
| 52 | 2476a | 1c Kestral block with quadruple impression of the black inscription and denomination. NH | \$3,400.00 | \$2,350.00 |
| 53 | C119 | 36c Sikorsky Zip block with color misregistration causing face to be blurred | | \$25.00 |
| 54 | PS12 | 25c Savings Stamp block of six - web splice on flying paster giving double paper on top four stamps. NG | | \$30.00 |
| 55 | C32 | 5c Airmail plate block with overinking and smear. Piece of selvage missing from top. NH. Left margin is complete though it may have been cropped in making the scan. | | \$45.00 |
| 56 | C32 | 5c Airmail plate block with underinking NH. Left margin is complete, it is under the previous lot. | | \$50.00 |
| 57 | 1336 | 5c Christmas Zip block with nice gutter snipe NH | | \$5.00 |
| 58 | O148 | 23c Official Stamp imperf block of four - printer's waste. NH A similar block sold in a Harmer's auction in Nov. 2013 for \$95 | | \$45.00 |
| 59 | 702 | 2c Red Cross with red color shift NH | | \$7.00 |
| 60 | 702 | 2c R. Very light crease at lower right corner. | | \$13.00 |
| 61 | 702 | 2c Red Cross with red color shift. Hinge Remnant. | | \$6.00 |
| 62 | 702 | 2c Red Cross with red color shift left NH | | \$7.00 |
| 63 | 1903 | 9.3c Mail Wagon miscut coil pair with precancel NH | | \$18.00 |
| 64 | 1823 | 15c Emily Bissel misperf NH | | \$60.00 |
| 65 | RB1,4,7 | Three proprietary revenue stamps with vignette shifts. Used | | \$25.00 |
| 66 | 1400 | 21c Giannini change of legend misperf NH | | \$13.00 |
| 67 | 1735 | "A" stamp vertical strip of three with horizontal perfs misplaced and diagonal. Gutter perfs in bottom of second stamp. NH | | \$125.00 |
| 68 | 1031 | 1c Washington vert pair folded and miscut leaving full gutter and 90% of stamp at bottom. LH with some disturbed gum. | | \$60.00 |
| 69 | 1291 | 30c John Dewey misperf NH | | \$25.00 |
| 70 | 1895 | 20c Flag misperfed coil pair NH | | \$10.00 |
| 71 | 1895 | 20c Flag coil misperfed strip of six with plate #2 on fourth stamp NH | | \$50.00 |
| 72 | 1895 | 20c Flag coil imperf strip of six with plate 39 on third stamp | | \$125.00 |
| 73 | 1895 | 20c Flag coil pair with red fading out in bottom stripes NH | | \$25.00 |
| 74 | 1895 | 20c Flag coil pair with black underinked. Right stamp has slight crease at top. NH | | \$25.00 |
| 75 | 1946 | "C" stamp vertical pair with light printing on most of top stamp and all of bottom stamp NH | | \$20.00 |
| 76 | 1610 | \$1 candleholder with offset on the back. NH | | \$60.00 |
| 77 | 1608 | 50c Lamp with offset on the back NH | | \$60.00 |
| 78 | O148 | 23c Official strip of four with full vertical gutter between two pairs. Printer's waste. NH | | \$175.00 |
| 79 | 909 | 5c Poland, two stamps with vignette shifts up and down NH | | \$15.00 |
| 80 | 910 | 5c Czechoslovakia, two stamps with vignette shifts up and down NH | | \$12.00 |
| 81 | 920 | 5c Denmark, two stamps with vignette shifts up and down NH | | \$15.00 |
| 82 | C95-6 | 25c Wiley Post pair with engraved colors shifted down NH | | \$60.00 |
| 83 | C95-6 | 25c Wiley Post pair with engraved colors shifted NH | | \$60.00 |
| 84 | C91-2 | 31c Wright Bros. pair with engraved colors shifted up NH | | \$30.00 |
| 85 | 2428 | 25c Christmas sleigh misperf NH | | \$8.00 |
| 86 | 944 | 3c Kearny Expedition overinked NH | | \$9.00 |
| 87 | C52 | 7c blue airmail coil pair with stacking offset on back. NH | | \$50.00 |
| 88 | 1263 | 5c Cancer misperf NH | | \$18.00 |
| 89 | E21 | 30c Special Delivery plate block with large plate crack in margin NH | | \$18.00 |
| 90 | 1384 | 6c Christmas Precancel with offset of the precancel on the back NH | | \$35.00 |
| 91 | 1338F | 8c Flag misperf NH | | \$6.00 |

| | | | | |
|-----|-------|---|----------|----------|
| 92 | 1375 | 6c Alabama misperf. Not common. NH | | \$13.00 |
| 93 | 1293 | 50c Lucy Stone missing legend misperf NH | | \$14.00 |
| 94 | 3466 | 34c Statue of Liberty coil pair with shifted die cuts NH | | \$15.00 |
| 95 | 2534 | 29c Savings Bonds with two unrelated color shifts: tan color shifted up and red shifted to right. NH | | \$15.00 |
| 96 | 1067 | 3c Soo Locks overinking and smear NH | | \$15.00 |
| 97 | 1109 | 3c Mackinac Bridge pair with smear in bottom margin NH | | \$7.00 |
| 98 | 1869 | 50c Nimitz lower left corner pair with perfs shifted down NH | | \$25.00 |
| 99 | 1509 | 10c Crossed Flags misperfed vertical pair NH | | \$28.00 |
| 100 | 1381 | 6c Baseball plate block with extra paper due to foldover NH | | \$90.00 |
| 101 | 1139 | 4c Credo misperf results in lost legend NH | | \$25.00 |
| 102 | 1848 | 5c Pearl Buck pair with change of design misperf. EE bars captured in right stamp. NH | | \$28.00 |
| 103 | | 1976 NJ Resident Trout Stamp, diagonal misperf rows one and three. Left three stamps creased. NH | | \$20.00 |
| 104 | 472 | Pakistan imperf block NG | | \$2.00 |
| 105 | 720 | 3c Washington block of 9 with full vertical gutter between columns 2 and 3 NH | \$600.00 | \$425.00 |
| 106 | 1486 | 8c Henry Tanner misperfed plate strip of 16 NH | | \$50.00 |
| 107 | 1509 | 10c Crossed Flags plate strip of 20 with red color shift NH | | \$22.00 |
| 108 | | Selection of 31 different small color shifts from Scott 1041 to 2426. NH | | \$46.00 |
| 109 | E15 | 10c Special Delivery pair, top stamp is double paper, bottom stamp has some small thins. LH | | \$15.00 |
| 110 | 1402 | 8c Eisenhower misperfed coil line strip of four. NH | | \$18.00 |
| 111 | 2015 | 20c America's Libraries with 2-way misperf NH | | \$12.00 |
| 112 | 1510 | 10c Jefferson Memorial with perfs shifted down results in missing top legend NH | | \$11.00 |
| 113 | U639 | 32c Space Exploration envelope with hologram shifted up 18mm so gutter between holograms is visible. Unused | | \$50.00 |
| 114 | 1949a | 20c Longhorn, extra-wide single from booklet used on commercial cover cancelled in 1983. | | \$10.00 |
| 115 | U540 | 3c Washington stamped envelope with surcharge shifted down and missing some of the green. Unused | | \$13.00 |
| 116 | U540 | 3c Washington stamped envelope with surcharge shifted down into the window and underinked. Unused | | \$20.00 |
| 117 | 1477 | 8c Santa - sheet showing progressive misperf. Horizontal perf separations through one stamp two rows down on right side. NH | | \$150.00 |
| 118 | 1338F | 8c Flag sheet of 100 with vertical perfs shifted. Small piece of selvage missing at lower left. NH | | \$130.00 |



Auction 144 closes on September 30th, 2016
View large pictures of lots at <http://www.efocc.org>

*Auction 144 closes on September 30th, 2016
View large pictures of lots at <http://www.efocc.org>*



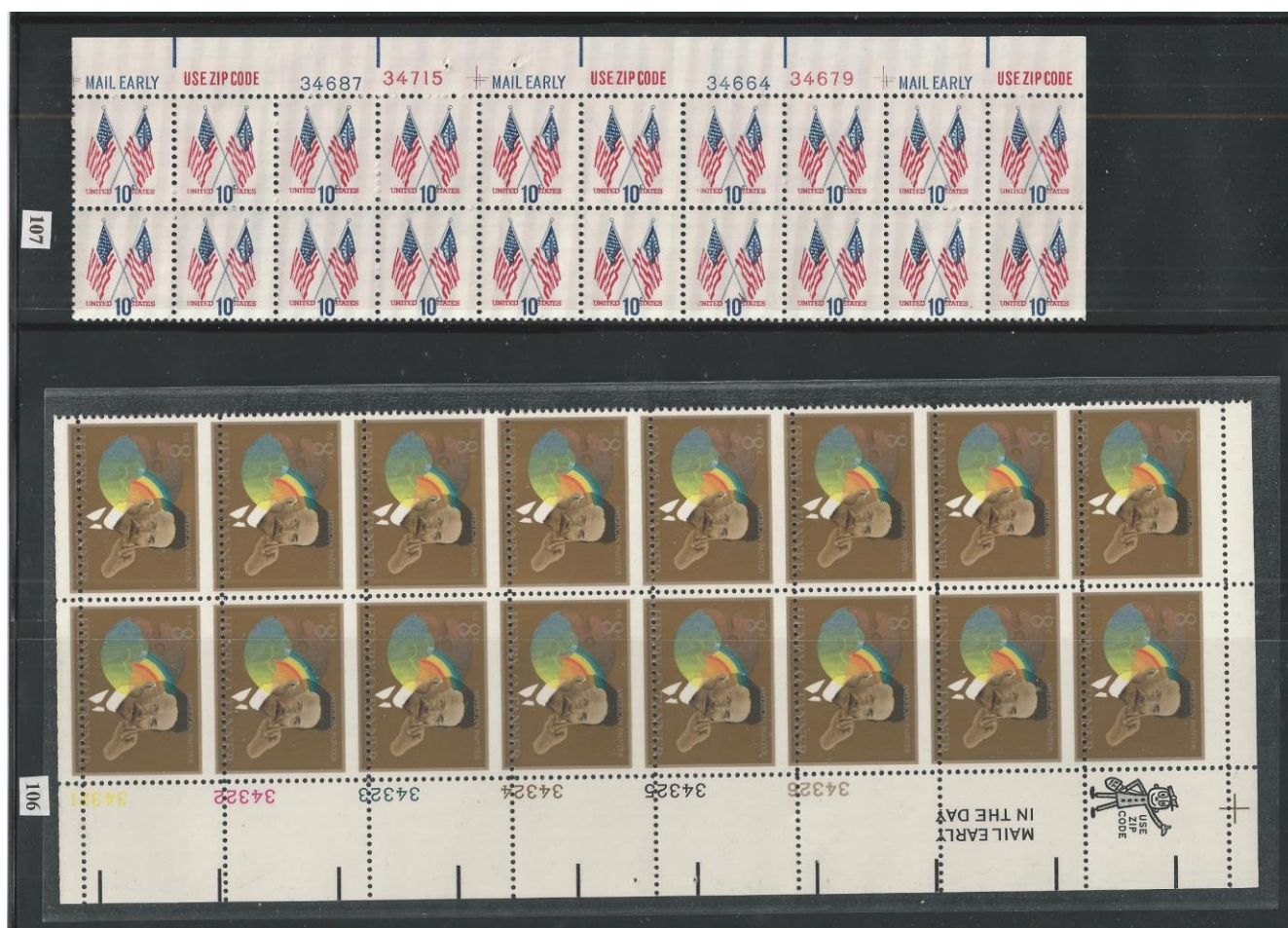
Auction 144 closes on September 30th, 2016
View large pictures of lots at <http://www.efocc.org>



This image displays a collection of 100 numbered postage stamps and stamp sheets, arranged in a grid-like fashion. The items are as follows:

- 81:** A 25-cent USAirmail stamp featuring a colorful, abstract design.
- 82:** A 25-cent USAirmail stamp featuring a portrait of a man.
- 83:** A 25-cent USAirmail stamp featuring a portrait of a man.
- 84:** A 25-cent USAirmail stamp featuring a portrait of a man.
- 85:** A 25-cent USAirmail stamp featuring a colorful, abstract design.
- 86:** A 25-cent USAirmail stamp featuring a portrait of a man.
- 87:** A 25-cent USAirmail stamp featuring a portrait of a man.
- 88:** A 25-cent USAirmail stamp featuring a portrait of a man.
- 89:** A 25-cent USAirmail stamp featuring a portrait of a man.
- 90:** A 25-cent USAirmail stamp featuring a portrait of a man.
- 91:** A 25-cent USAirmail stamp featuring a portrait of a man.
- 92:** A 25-cent USAirmail stamp featuring a portrait of a man.
- 93:** A 25-cent USAirmail stamp featuring a portrait of a man.
- 94:** A 25-cent USAirmail stamp featuring a portrait of a man.
- 95:** A 25-cent USAirmail stamp featuring a portrait of a man.
- 96:** A 25-cent USAirmail stamp featuring a portrait of a man.
- 97:** A 25-cent USAirmail stamp featuring a portrait of a man.
- 98:** A 25-cent USAirmail stamp featuring a portrait of a man.
- 99:** A 25-cent USAirmail stamp featuring a portrait of a man.
- 100:** A 25-cent USAirmail stamp featuring a portrait of a man.





EFOCC Auction 143 Realizations (Closed June 30th, 2016)

| Lot | Hammer | Lot | Hammer | Lot | Hammer | Lot | Hammer | Lot | Hammer | Lot | Hammer | Lot | Hammer | Lot | Hammer |
|-----|--------|-----|--------|-----|--------|-----|--------|-----|--------|-----|--------|-----|--------|-----|--------|
| 4 | \$8 | 5 | \$9 | 6 | \$95 | 9 | \$3.50 | 20 | \$75 | 21 | \$3.50 | 24 | \$15 | 25 | \$10 |
| 27 | \$8 | 44 | \$20 | 57 | \$23 | 58 | \$22 | 59 | \$30 | 60 | \$13 | 62 | \$15 | 63 | \$9 |
| 64 | \$25 | 65 | \$40 | 66 | \$15 | 75 | \$13 | 76 | \$18 | 78 | \$23 | 79 | \$6.50 | 80 | \$15 |
| 81 | \$25 | 82 | \$18 | 84 | \$20 | 86 | \$10 | 88 | \$24 | 89 | \$25 | 100 | \$50 | 101 | \$8 |
| 102 | \$30 | 106 | \$35 | 109 | \$69 | 111 | \$150 | 112 | \$2.50 | 114 | \$35 | 115 | \$27 | 119 | \$50 |
| 120 | \$35 | | | | | | | | | | | | | | |

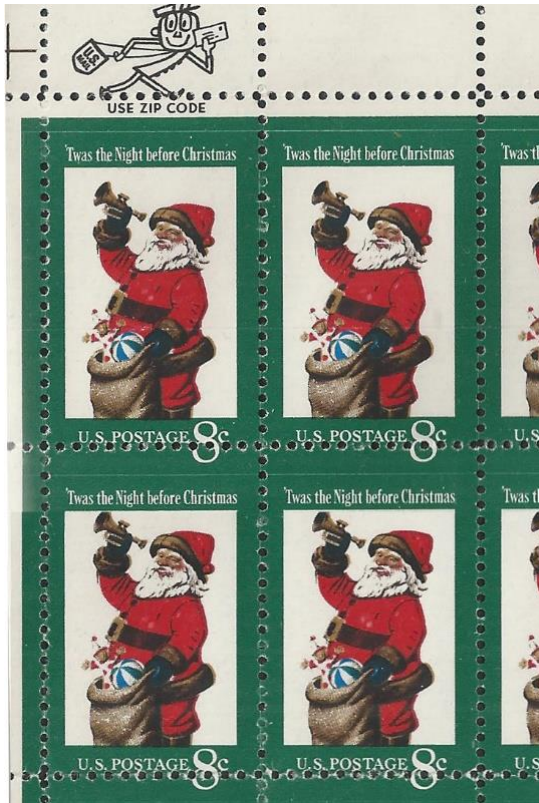
Members, please note: Unsold lots from Auctions 143 are available for sale on a first come-first served basis for \$1 over the reserve price plus shipping, with no buyer's commission. Please contact the Auction Director to purchase these lots.

THE SIGN FX GROUP, INC.
ARCHITECTURAL SIGNAGE
136 MARION DRIVE
WEST ORANGE NJ 07052-3305

USA
32



113 114
115
116



Details if lots 117 & 118. Full sheets are pictured on page 26.

EFOCC Auction Consignment Form

EFOCC use – only ⇒ AUCTION #:

LOT #:

| | | |
|--|---|--|
| Consignor: _____ Address: _____ _____ Telephone: (____) - _____ Email/Fax: _____ EFOCC Membership No: _____ APS Membership No: _____ | Country (if not U.S.): _____ Catalog No. _____ _____ Catalog Value: _____ _____ | Condition (circle): NH LH HH HR NG USED Please check if this is a donation lot: <input type="checkbox"/> Please note Minimum Bid: \$ _____ |
|--|---|--|

Description of item: {Please note any faults and fasten lots below this line or on the reverse side}

Instructions: Fill in all information. Attach each lot to the front of one form, using a stock card, face-down glassine or other mount. Use separate rigid sheet for larger lots and attach a completed form. No staples - please. Make sure it is easy for us to remove and re-insert each lot.



Send consignment form(s) with lot(s) to: David Hunt, 45 Fairway Drive, Denver, PA 17517
 For your protection, we recommend that you send lot(s) by registered or insured mail.



EFOCC Auction Bid Sheet

Name: _____ EFOCC #: _____ *New Bidders.....APS Membership appreciated: _____*
 Address: _____ Phone: (____) _____ *Please limit my purchases to:*
 City: _____ State: _____ Zip: _____ \$ _____

Please execute the following bids for me in EFOCC Auction # _____

 {Signature - all bid sheets must be signed}

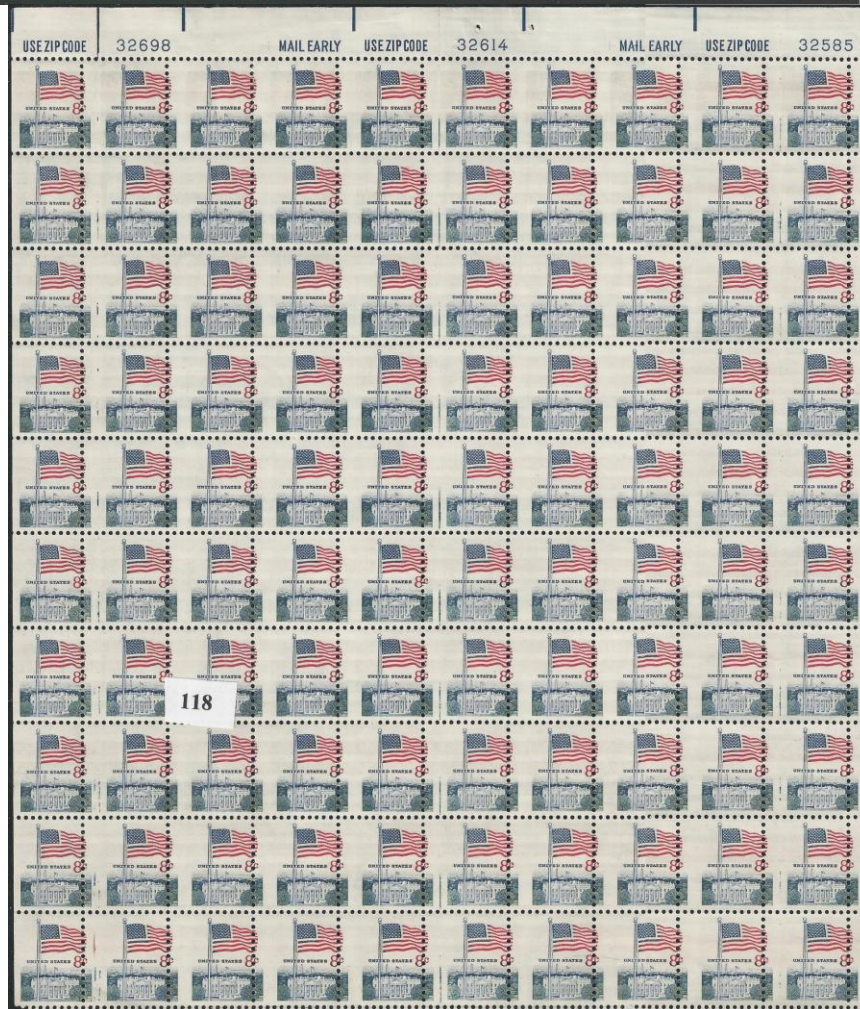
 {Date}

Earliest postmark wins tie bids!!

| Lot# | Bid | Lot# | Bid | Lot# | Bid | Lot# | Bid | Lot# | Bid | Lot# | Bid |
|------|-----|------|-----|------|-----|------|-----|------|-----|------|-----|
| | | | | | | | | | | | |
| | | | | | | | | | | | |
| | | | | | | | | | | | |
| | | | | | | | | | | | |
| | | | | | | | | | | | |
| | | | | | | | | | | | |
| | | | | | | | | | | | |

Postage will be charged to the bidder. A 10% buyer's premium will be added to successful bids.
 Mail bid sheets to: David Hunt, 45 Fairway Drive, Denver, PA 17517 or email to: dhhunt@ptdprolog.net

Auction 144 closes on September 30th, 2016
View large pictures of lots at <http://www.efocc.org>



For over 60 years...



American philately's #1 dealer in major errors.



Now also your source
for investment grade
U.S. classics.

Jack Nalbandian, Inc.

Post Office Box 71
East Greenwich RI 02818
Toll Free: (877) 742-6168
Phone: (401) 885-5020
nalbandianj@earthlink.net

www.nalbandstamp.com

Missing Something?

We have it. If you're looking for Errors, Freaks & Oddities, you'll find them in our auctions.

Each of our auctions features hundreds of unique EFOs from the USA and around the World.

Looking to sell? We are the official auctioneer at five major stamp shows each year.

For information on how to bid or consign, contact us today!

1-800-782-0066

consign@RegencySuperior.com
www.Regency-Superior.com



Your Source for Buying, Selling & Consigning Errors, Freaks & Oddities

STAMPS • COINS • SPACE • AUTOGRAPHS

REGENCY SUPERIOR

Experienced Auctioneers Since 1929

229 North Euclid Avenue • Saint Louis, MO



ifsd
Int. federation of stamp
dealers' associations

