

A Publication of the
EFO Collectors' Club
APS Affiliate #103
ATA Chapter #94

www.efocc.org

The EFO Collector



July - September 2014 Volume XLII No. 5 Whole Number 176 ISSN 1099-7377



Inside This Issue

Auction 136 Highlights

Joseph Monteiro: The First Invest From a Few Selected Countries – Part V

Don David Price: Inverted Jenny on Display at PhilaKorea

John Ryskamp: Historic Spiderman Inverts

Hubert Jakobs: Catalog of Estonian Errors Published

Howard Dennis: Howard Dennis Asks Questions

Questions/Answers

Lundy Misperfs

John Hotchner's PerfOrations: Inverts – Part 2

6	From Your Editor	3
7	EFOCC Member Post	3
9	Exhibiting EFOCC Members	5
10	Secretary's Report	16
11	Treasurer's Report	16
11	David Hunt Presents Auction 137	17
12	Auction 135 Realizations	23
12		
14		



To Err is Human, To Find is Divine



Upside down or grounded, Siegel sells them best.



Robert A. Siegel

AUCTION GALLERIES, INC.

For information about our auctions or to request a copy of the next sale catalogue and newsletter, please contact:

Robert A. Siegel Auction Galleries, Inc., 60 East 56th Street, 4th Floor, New York, N.Y. 10022

Phone (212) 753-6421 Fax (212) 753-6429 E-mail: stamps@siegelauctions.com

For on-line catalogues, prices realized and the Siegel Encyclopedia

www.siegelauctions.com

From Your Editor



Elections

As per EFOCC's bylaws, we need to hold elections for a new Board of Directors in 2014. We elect a Board of four leaders: President, Vice-President, Secretary and Treasurer. If you are interested in helping your Club or would like more information, please see "A Note to Members" on page 10 of last issue. So far, we have a slate of three:

Wayne Youngblood, our Vice-President, will stand in the election as candidate for President. Dave Hunt will be candidate for Treasurer and Scott Shaulis will be candidate for Secretary, both continuing their current roles. However, we need a candidate for Vice President. **Are you willing to stand for election to the position of Vice President?**

What Does The Vice-President Do?

Basically, Board Members help the Club pretty much as they see fit. It is not a stress activity. Ideally, we would like the Vice President assist in the following areas:

- ❖ Provide leadership in running the EFOCC, working with other Board Members and officers,
- ❖ Be the public face of the Club, answering queries that come in through the website (a function now imperfectly executed),
- ❖ Possibly act as Awards Director (see description in my column in the last issue),
- ❖ If you attend APS stamp exhibits, organize seminars to further the goals of the EFOCC.

Having said this, if you have other ideas on how to improve the EFOCC and grow its membership or improve its standing among our fellow collectors, this is a great opportunity to be influential and see the fruits of your efforts.

The Ecstasy, The Agony, The Fun

During the last few months, there were three EFO events that caused me a range of feelings...

The first was when I received a package from John Hotchner, containing the material for his current PerfOrations column and the next one... You see, John used the \$2 inverted Jenny. Upon closer inspection, I noticed that it was one similar to the ones we described in issue 172, where the blue ink runs into the red ink. Here it is:



Well, I was indeed very happy to have it. **Thanks, John!**

Sometime later I received another package, this time from Wayne Youngblood. First, I was overjoyed to see that Wayne had graciously used EFOs as franking. **Thanks, Wayne!** But, upon closer inspection, my enthusiasm was curbed and agony started to set in... Here is the picture:



So, the mail carrier had used her pen and, under the guise of protecting 50¢ of USPS revenue, had ruined these misperfs that had a value for me well above the 50¢... I know that these days, USPS employees barely recognize the stamps that the USPS issues, but this level of lack of care left me livid, I must admit! Next time I see the mail carrier having a lengthy conversation with a neighbor, I will have to think that she is wasting well more than 50¢ of USPS money by delaying mail delivery. How can you possibly be friendly to such a malfasant mail carrier, even if she is in the neighborhood every day...

The third EFO occurrence was in the *fun* category. While scanning John's stamps for his PerfOrations column, I discovered something interesting on the back of a block.



This is the back of the top block shown in Figure 3 on page 15. Somehow I suspect that it might be a discovery that even John might have forgotten... By the way, there is an article on our website (in the *Not Quite EFOs* section) about advertisements found on the back of stamps, although this one has an additional element of a guarantee.

I wish you and your loved ones the best for the Holiday Season and a Happy and Healthy New Year! Thanks for being part of the EFOCC Family....

Cemil ★



EFOCC Member Post

I have over 1,000 singles and plate blocks/strips with misperfs, color shifts, imperfs, etc., for sale. Tell me what you need. Stan Goldfarb, 8520 Atwell Road, Potomac, Maryland 20854, golfar1@ix.netcom.com, (301)279-0754.



ALL CONTENTS COPYRIGHTED © 2014 BY THE EFO COLLECTORS' CLUB.

Authors and contributors have express permission to reuse of their material elsewhere. Except for material reprinted herein, or material individually copyrighted by the author, material herein may be reprinted elsewhere as long as full credit is given to The EFO Collector, citing the issue date and number and giving the address of the EFOCC Secretary. ♦ The EFO Collector is published quarterly, in March, June, September and December. The submission deadline for any issue is the 15th of the month preceding the issue, e.g. 2/15, 6/15, 8/15 and 11/15. Send or e-mail editorial material directly to the Editor. Sample copies of The EFO Collector are available for \$3 from the Secretary. ♦ Membership includes subscription to The EFO Collector. Membership fees are as follows:

	Members with addresses in the U.S. or Canada	Members with addresses elsewhere
One year's dues	\$20.00	\$37.00
One year membership renewal	\$20.00	\$37.00
Two year membership renewal	\$37.00*	\$70.00*
Life membership	\$350.00†	\$500.00

Please make membership renewal checks to "EFOCC" and mail to Treasurer. Charges can be paid via PayPal, subject to a \$2 convenience fee, e-mail Secretary for details. [*] Each additional year prepaid at the same time is \$17/\$33. [†] \$300 for those older than 65.

Advertising Rates

	Per Issue	Contract 4 Issues
Full page in color	\$100.00	\$328.00
Half page in color	\$80.00	\$280.00
Quarter page in color	\$65.00	\$244.00
Cover location in color	\$125.00	\$400.00
2 page center spread in color	\$150.00	\$450.00

Single insertion advertisements and from those who are not APS Members must be fully prepaid. Four-issue contract rate advertisers will be invoiced in full upon publication of their first ad. 20% discount for black & white advertising, The deadline for ad copy is the 15th of the month preceding the issue. General advertisement inquiries should be directed to the Advertising Director at moek78@msn.com. Advertisement copy related inquiries should be directed to the Editor. Ad payments should be directed to Treasurer. Please make checks payable to "EFOCC".

EFOCC Officers (2012-2014)

President	Jerome V. V. Kasper P. O. Box 3470, Clovis, CA 93613-3470	jerome.kasper@gmail.com	
Vice-President	Wayne Youngblood	WYStamps@gmail.com	
Auction Director	David Hunt 45 Fairway Drive, Denver, PA 17517	dhhunt@ptdprolog.net	Phone: (717) 445-9420
Treasurer	David Hunt 45 Fairway Drive, Denver, PA 17517	dhhunt@ptdprolog.net	Phone: (717) 445-9420
Secretary	Scott Shaulis P. O. Box 549, Murrysville, PA 15668-0549	scottshaulis@comcast.net	
Editor	Cemil Betanov 153 Claudy Lane, New Hyde Park, NY 11040	CemilB@optonline.net	Phone: (516) 849-6604
Club Member-at-Large	Nancy B. Clark P. O. Box 427, Marstons Mills, MA 02648-0427	nbc@cape.com	Phone: (508) 428-9132
Club Member-at-Large	Edward A. Kennedy 19 Ranier Road, Effort, PA 18330-8829	moek78@msn.com	Phone: (570) 620-2011
Advertising Director	Edward A. Kennedy 19 Ranier Road, Effort, PA 18330-8829	moek78@msn.com	Phone: (570) 620-2011

EFOCC Member Post Submission Form

Every EFOCC member is entitled to three free 35 word listings per year in the EFOCC Member Post. To use your free listing, please complete this form, and mail it to the Editor. If you wish, you can also e-mail your request to the Editor.

Help With Members' New Projects Submission Form

If you would like a free listing in The EFO Collector to help you with a new EFO project, please complete this form and mail it to the Editor. If you wish, you can also e-mail your request to the Editor.

I am looking for

Name, address, e-mail:

Exhibiting EFOCC Members

MINNESOTA STAMP EXPO 2014, July 18–20, 2014, Crystal, MN

Andrew McFarlane, *The 1947 U.S. Postage Stamp Centenary Commemorative*, Gold, American First Day Cover Society Award, American Philatelic Society 1940-1980 Medal of excellence.
Eliot A. Landau, *The 1948 Gettysburg Address, the Stamp, FDCs and Its Uses*, Vermeil.

APS STAMPSHOW 2014, August 21–24, 2014, Hartford, CT

Alfredo Frohlich, *Panama: The Path Between the Seas*, World Series of Philately Prix d'Honneur.
Alfredo Frohlich, *United States of Colombia 1868-1881*, World Series of Philately Prix d'Honneur.
Andrew McFarlane, *The 1947 U.S. Postage Stamp Centenary Commemorative*, World Series of Philately Prix d'Honneur.
Robert G. Rufe, *U.S. Special Handling 1925-1959: The Stamps & The Service*, World Series of Philately Prix d'Honneur.
John M. Hotchner, *Designing the Hummingbirds Issue of 1992*, Court of Honor.
John M. Hotchner, Kurt and **Joann Lenz** & Richard Drews, *U.S. Postal Counterfeits from 1984 to Modern Times*, Court of Honor.
John M. Hotchner, *World Rarities & Uniquities*, Court of Honor.
Eliot A. Landau, *1909 Lincoln Centennial Issues, Varieties and Usages*, Best Illustrated Division and Gold.
Roger S. Brody, *Series 1902 – The Post Office Enters the 20th Century*, Best Illustrated Division and Gold.
Anthony F. Dewey, *The Three Cent Connecticut Tercentenary Issue of 1935 and Its First Days*, Gold.
Anthony F. Dewey, *A Postal History of Hartford, Connecticut*, Gold, Postal History Society Award.
Alfredo Frohlich, *Chile – The Rouletted Issues, 1877-1899*, Gold.
Eliot A. Landau, *The Franklin D. Roosevelt Memorial Series of 1945-46 and its First Day Covers*, Gold, American First Day Cover Society Award.
Robert D. Rawlins, *U.S. Navy Battleship Mail During World War I*, Silver.
John M. Hotchner, *The Mid 19th Century Start of Perforating in Great Britain and the United States*, Single Frame - Gold.
John M. Hotchner, *Perforating the Sheet Stamps of the 3rd Bureau Issue, 1908-1922*, Single Frame – Gold, Errors, Freaks & Oddities Collectors Club Second.
Kurt and **Joann Lenz**, *E-COM and Its Forerunners*, Single Frame - Vermeil.

BALPEX 2014, August 29–31, 2014, Hunt Valley (Baltimore), MD

Alfredo Frohlich, *Panama: The Path Between the Seas*, Grand & Gold.
Alfredo Frohlich, *Chile – The Rouletted Issues, 1877-1899*, Gold, American Philatelic Society Award of Excellence (title page), American Philatelic Society Pre-1900 Medal of Excellence.

OMAHA 2014, September 6-7, 2014, Omaha, NE

Andrew McFarlane, *First Days of the George Rogers Clark Commemorative*, Gold, American Philatelic Congress Award, Collectors Club of Chicago Award, United States Stamp Society Statue of Freedom Award.

MILCOPEX 2014, September 19-21, 2014, Milwaukee, WI

Douglas N. & **Nancy B. Clark**, *The Development of Mail Routes in Georgia, 1846-1889*, Gold, American Philatelic Society Pre-1900 Medal of Excellence, Mobile Post Office Society Charles L. Towle Award.
Eliot A. Landau, *The 5-Cent China War Resistance Issue of 1942*, Gold, American First Day Cover Society Award.
Robert D. Rawlins, *U.S. Navy Battleship Mail During World War I*, Vermeil. American Association of Philatelic Exhibitors Award of Honor, American Philatelic Society Research Medal, Universal Ship Cancellation Society Fernandez Trophy.

SESCAL 2014, October 17-19, 2014, Los Angeles, CA

Alfredo Frohlich, *Colombia First Perforated Issue 1883*, Gold, WESTPEX Merit Award.
Jerome V. V. Kasper, *Aerogrammes of Ethiopia*, Gold.
Francis Adams, *Toward United Nations*, Single Frame – Gold.
Jerome V. V. Kasper, *New Zealand Prisoner of War Airletters*, Non-Competitive.

List of Exhibitor Members continued on next page...

Exhibiting EFOCC Members ...continued

■ FILATELIC FIESTA 2014, November 14-16, 2014, San Jose, CA

Andrew McFarlane, First Days of the George Rogers Clark Commemorative, Reserve Grand & Gold, American Philatelic Congress Award.

■ FLOREX 2014, December 5-7, 2014, Orlando, FL

Alfredo Frohlich, United States of Colombia 1868-1881, Grand & Gold.

Anthony F. Dewey, *The Three Cent Connecticut Tercentenary Issue of 1935 and Its First Days*, Gold, Collectors Club of Chicago Award.

- **Andrew McFarlane**, *First Days of the 1929 George Rogers Clark Commemorative*, Gold, American Philatelic Society
- 1900-1940 Medal of Excellence.

William Kelly, *The Three Cent Iwo Jima Stamp of 1945 and its First Days*, Vermeil, American Association of Philatelic Exhibitors Award of Honor.

■ **Anthony F. Dewey**, *The One Cent UN First Issue of 1951 and Its First Day Solo Use*, Single Frame – Grand & Gold.

Congratulations to our Exhibitor Members!

Of Note:

- ❖ **William Averbeck** won with his exhibit ***Canadian Error Stamps and Their Causes*** at APS StampsShow the EFOCC First award. We congratulate Mr. Averbeck and are happy to announce that, as part of the award, he will also receive a one-year complimentary membership in the EFOCC.
- ❖ We would like also to recognize **John Hotchner**, who, also at StampShow, received the EFOCC Second Award with his exhibit ***Perforating the Sheet Stamps of the 3rd Bureau Issue, 1908-1922***. Well done, John!

Auction 137 Highlights

David Hunt

I certainly hope there are some coil EFO enthusiasts out there as this auction begins with a run of coils – imperf, shifted perfs, miscut, etc. Lot 5 is an eye-catcher, being both imperf and miscut, resulting in the solid blue background creating a crossroads. You don't often see an imperf coil strip with plate number, but there is one at lot 18. Sneaking in amongst the coils is a great color shift in lot 7; the red inscription is shifted from the bottom to the top and the black rider has a ghostly green companion – appropriate for this time of year.

Lot 27 is a plate block with a nice perf shift putting the plate number inside the upper right stamp. There is also a very faint ghost image of a plate number in the normal position relative to the perfs. Carl Sandburg's signature also has a ghost image shifted 6mm right from the darker image. Lot 29 is known as the 'fourth person' shift. The design shows a man, woman and child watching Old Faithful with the woman wearing a red skirt. On this stamp the red is shifted left almost 1.5mm so it appears there is a second child standing at the man's left. The green litho for the background trees is also shifted.

Two lots show ink smears on coils: lots 37 and 44. The later is more dramatic, but both are interesting. Now that baseball season is winding down we can concentrate more on stamps, but why not do both? Lot 54 is a nice color shift on that popular topic. With lot 61 you get two shifts all in one stamp. Note that the tan is shifted up while the red is shifted right. Lot 129 has a clear mirror image of the Leif Erikson statue on the gum side (the front is normal). This is an error type we don't often have in the EFOCC auction.

Lastly, lots 8 and 84 are to see if anyone is paying more attention than I was when I made up the auction!★

Remember to bid in Auction 137!

It closes on January 31st, 2015.



The First Invert from a Few Selected Countries – Part V

Joseph Monteiro

In previous instalments of this series of articles, I presented the first inverts from India, Canada, United States, Australia and New Zealand (in Part I), Belize, Jamaica, Kenya, Uganda and Tanganyika (in Part II), Canal Zone, Belgium, Argentina and Transvaal (in Part III) and Tonga, Panama, Nyassa and Hungary (in Part IV). In this part, I continue to describe further well-known first inverts.

China

In 1865, the Englishman, Robert Hart developed a mail service for the Imperial Maritime Customs, initially to carry consular mail to and from treaty ports. This service was opened to the public on May 1st 1878, and China's first postage stamps, the *Large Dragons* were issued to handle payment. Stamps continued to be issued to the Revolution of 1911, but it was not until December 14, 1912, that the first new designs of the Republic were issued with two commemorative sets of 12 each, the first set depicting Sun Yat-Sen and the second Uan Shikai.

On May 5, 1913, the definitives called the *Junk Issue* went on sale and continued in use till the 1930s. "The low values featured a junk (a Chinese sailing vessel), while values from 15¢ to 50¢ showed a farmer reaping rice, while the dollar values depicted the three-part gateway to the Hall of Classics in Beijing. The series was first printed in London, then in Beijing from 1915; they can be distinguished by close examination. The designs were re-engraved in 1923, and a number of design features were changed; for instance, the whitecaps in the water underneath the junk were removed, and the water darkened" [1]. The first issue in 1913 consisted of 20 values. The stamps were printed on white wove paper; each stamp measuring 26×22 mm., the perforation being 14. The engraving and printing were carried out by Messrs. Waterlow & Sons, London.

The 1915 or second issue consisted of 21 values (a \$20 was added) and in 1919 two other values were added the 1½¢ and 7¢. Each stamp of the second issue measured 25½-22½ mm., and had a perforation of 14, 14½. The stamps were printed in sheets similar to the sheets of the first issue, i.e., the ½¢ to 50¢ values were printed in sheets of 200 stamps. The \$1 to \$20 values were printed in sheets of 50. The work of re-engraving the dies and the printing of the stamps was entrusted to the Chinese Bureau of Engraving and Printing. As a result, there are minor engraving differences between the stamps of the first issue and those of the second issue. There are also variations in paper [6].

The invert is from the higher values of the 1915 series, namely the \$2, Plate 1. The design of this \$2 stamp shows the Chinese inscription at the top. In the middle is the Arch (Hall of Classics). At the bottom is the inscription REPUBLIC OF CHINA POSTAGE with a \$ sign on its right and 2 on its left. On the invert, the Arch (Hall of Classics) is inverted. Gordon A. Clayton states "A very rare Chinese stamp is the \$2 of this set with its arch-centre inverted. A complete sheet (50 stamps)



was printed in error, and issued at the post office of Tai-yuen-fu. One of the fifty was used on a money order, and is in the hands of the Post Office; the others are at large" [6]. One auction catalogue states "1915 Hall of Classics First Peking Printing \$2 black and blue, variety center inverted, bright colors, well centered for this, with vertical guideline at right, previously hinged, lightly hinged, very fine and fresh unused, with certificate (Chan 245a) (YT 163A, cat. €150,000). Only one sheet of 50 of this variety was sold at the Hankow post office. One of the "Four Treasures of the Republic" (latest auction realization HK\$ 850,000 plus buyer's premium) (Cat No. 237a)." At an auction by Cherrystone in December 2010, the invert realized \$60,000. Though the stamps were printed in sheets or panes of 50, only about 30 examples of this invert are known to exist to date.

It is also worthwhile observing that an invert on a Chinese stamp, which is more valuable than the one described, exists but this is an inverted overprint rather than an inversion of part of the printing design with respect to the rest of the printing design.

Russia

The messenger system was operative in Russia as early as the 10th century where letters were carried in the form of a roll with a seal. However, it was not until the mid 1850s that the idea of postage stamps swept Russia and the most of the rest of the world. The first stamps of Russia went on sale December 10th 1857, but were not valid for use until January 1st, 1858. It was an imperforate stamp bearing the value of 10-kopeck, depicting the Coat of Arms of Russia. It was printed using typography in brown and blue. After 1866, the stamps were printed on laid paper watermarked with a pattern of wavy lines and "EZGB" in Cyrillic. The "grain" of the laid paper was usually horizontal, but for a minority of each value the grain is vertical [1]. The first stamps of Imperial Russia that were valid for use throughout the States of Russia were issued in 1866.

The stamps in the 1866 issue depicted the Coat of Arms of Russia. The design on the 1866 10k stamp shows a blue and white centre with a coat of arms symbol. The inscriptions



around the symbol read 10 KO II : 3A NOTb. * II O PTOBAR MAPKA It is light brown in colour on the outside with 10 in the four corners. The bottom inscription reads 10 KO II : 3A NOTb.

The Russian stamp with the centre design inverted was the 10 kopeck stamp (Scott 23a). One writer states that “the 1866 10k Brown and blue is one of the rarest and most famous stamps of Russia. In addition, it is one of the key highlights for a serious collection of inverted centers of the world, making it one of the stars of the Cunliffe collection. Less than 10 examples are known to exist, and all have been used.” This stamp was estimated at \$60,000, but sold for \$42,500. Covers with the stamp also exist, one with two copies of the stamp on it. The stamps and cover have been described as “... each with inverted centres, tied by faint kursk cds (18 December) to 1874 cover to Warsaw (21 December arrival cds at right), addressee’s data partly excised and covered by blank paper, reverse with postal railway markings.” It was estimated at €100,000+ and sold for \$132,000 (Cherrystone).

At the time of writing this article, I do not have information on how many stamps were printed per pane and the format of the stamps printed per pane. This would provide a reasonable guide as to how many inverts could exist as a maximum if one pane of stamps were printed with an inversion.

British Central Africa Protectorate (BCA)

BCA existed in the area of present day Malawi between 1891 and 1907. The first stamps of the Protectorate were issued in 1891 by overprinting the Rhodesian stamps of the British South Africa Company. 1895 saw the introduction of stamps printed for the protectorate, featuring its coat of arms and inscribed BRITISH CENTRAL AFRICA. The 1895 issue was printed by De La Rue on unwatermarked paper, but from February 1896 on the paper had either the CROWN CC or CROWN CA watermarks.

In 1898, postage stamps for internal use described as tokens were used. One authority on the subject of these tokens states “The first setting of these tokens as they were referred to by the Acting Postmaster General in his official notice of 11 March 1898, was printed in much smaller numbers than the second setting, and gives a wide variety of framework lengths ... The backs of the tokens (15 x 2 rows) were embossed with uninked type. A control letter(s) and number were used, the letters in an apparently random selection, while the numbers were consecutive from 1 to 30. The provisional issue was only used for correspondence within the Protectorate, and despite its



short life from March to August 1898 underwent several sophistications, including a second setting of the type and the perforation of the stamps” [7]. “As the die could only be applied one token at a time, the positioning of the centre varied on each making every one a unique item. The operator of the press appears to have been more skilled than that of the printing press as there are only a few instances of centres inverted, missing or misplaced” [7].

The design of 1p (penny) stamp or token is as follows. It has four border lines around the token which were imperforate. The inscription at top reads INTERNAL and at bottom reads POSTAGE. The lines and inscription are in blue colour. In the centre, is the oval image, like a seal in red depicting ONE PENNY at the bottom with flower design below, the inscription at the top BRITISH CENTRAL AFRICA PROTECTORATE and the picture of tree in the middle, all the depiction is in white colour.

The inverted stamp shows the oval in the centre of the stamp inverted. It has been described in one place as follows: “1p Cheque Stamp - From its last appearance at auction in the Harmers "Inverted Centres" sale of February 25, 1963, it has had expert restoration of a small facial thin within the center oval by the letters “PRO” of “PROTECTORATE.” Of the mere fifteen examples of this rarity known to exist, it is still among the finest, as nearly all have faults much more severe than the Cunliffe collection.” The stamp was estimated at \$30,000 and sold for \$16,000.

Italy

The first stamps of Italy were those of its States (Modena, Naples, the Papal States Parma, Romagna, Sicily and Tuscany) as Italy was not unified in 1861. Stamps printed after March 17, 1861, are considered the first stamps of Italy. Tony Clayton states “When the Kingdom of Italy was formed from a large number of the former states, the stamps of Sardinia were used where the lire and centesimi still held sway as the currency. As time progressed all of Italy came to use the lire.” The first 1863 stamps of Italy with the words Postale or Poste and Italiano or Italiane were printed by Matraire followed by De La Rue. Thereafter, a number of sets of stamps were issued: the Floreale definitive issues; the Michetti definitive issues; the Leoni definitive issues; the Overprinted definitive issues; the Giribaldi issues of 1910; the Rebuilding of St. Marks issue; the Overprinted Jubilee issue of 1913; the Dante commemorative issue of 1921; the Trieste Philatelic Congress of 1922; The Mazzini Issue of 1922; the Propaganda Fide issue of 1923; the

Overprinted Victory issue of 1924; and the Volta issue of 1927 [8]. This was followed by the Filiberto issue of 1928.

It was in the Filiberto issue that the invert occurred. Ten stamps were issued to commemorate his 400th birth anniversary. As stated by Tony Clayton “Between July and September 1928, 10 stamps were issued to commemorate the 400th anniversary of the birth of Emanuele Filiberto (1528 to 1580), Duke of Savoy, who recovered his lands from the French. The three lowest values, 20c, 25c and 30c, all occur with two perforations, 11 and 13¾, both line. The latter is scarcer in all three cases, the 20c particularly so. The quality of perforation for the perf 13¾ stamps is usually poor. Very scarce mixtures of the two perforations are known. The Lire 1.25 value is usually perf 14 comb, but a very rare perf 13¾ line is also known” [8].

The design of the 30c stamp shows the picture of Emanuele Filiberto in the centre dressed as a warrior. The frame on the outside has an inscription. The top reads POSTE ITALIANE with Cent. on the left and 30 on the right. The bottom inscription reads 1528 TORINO 1928 with an image of a shield on the left and an image on the right. The inscription on the left side reads IV . CENTENARIO . DI. The inscription on the right side reads EMANUELE . FILIBERTO . The stamp has two colours: maroon red for the centre and blue-grey for the borders. The centre design is not well centered within the frame.



The inverted image of this stamp shows the picture of Emanuele Filiberto inverted. One auction catalogue describes this as “1928 "Filiberto"-. Center inverted, one of only two with original gum.” It was sold by the Cherrystone for \$48,875.00. At the time of writing this article, I do not have information on how many stamps were printed per pane and the format of the stamps printed per pane. This provides a guide as to how many inverts could exist as a maximum if one pane of stamps were printed with an inversion.

It is also worthwhile observing that an earlier invert exists on the one of the overprinted definitive issue stamps (1c brown) but this is an inverted overprint rather than an inversion of part of the printing design with respect to the rest of the printing design.

Concluding Remarks

The above provides a continuation of a brief description of the first inverts of a few countries found. The cause of these errors is the inversion of partially printed panes. These stamps

The EFO Collector | www.efocc.org

needed two plates to print the two colours though the printing process was the same. First one colour had to be printed and then another, as in those days printing technology was not as advanced as it is today. In the case of two inverts described above, some key technical information is missing on the number of stamps printed per pane or sheet. This often provides some assurance to collectors that more inverts of the same type may not mysteriously turn up, as it can significantly affect the value of their invert. However, in both cases, very small number of the inverts are known to exist.

Whether more of these inverts turn up in someone's collection is anyone's guess. Many collectors keep on dreaming of finding one of those inverts that lay hidden in some collection, unknown to its owner. I also sometimes do the same thing, perhaps, someday my luck will turn around. I hope these odds are better than those of buying a lottery. 🍀

Bibliography

- [1] www.wikipedia.org
- [2] *Monteiro, Joseph*, The First Invert from a Few Selected Countries – Part I, The EFO Collector, April-June 2010, Volume XXVIII, No. 4, pp. 7-9.
- [3] *Monteiro, Joseph*, The First Invert from a Few Selected Countries – Part II, The EFO Collector, July-September 2010, Volume XXIX, No. 1, pp. 7-10.
- [4] *Monteiro, Joseph*, The First Invert from a Few Selected Countries – Part III, The EFO Collector, January-March 2014, Volume XLII, No. 3, pp. 7-10.
- [5] *Monteiro, Joseph*, The First Invert from a Few Selected Countries – Part IV, The EFO Collector, April-June 2014, Volume XLII, No. 4, pp. 7-9.
- [6] *Gordon A. Clayton*, The Republic Stamp Issues of China (1927), Philatelic Database, Stanley Gibbons Monthly Journal, June 1, 1927.
- [7] *Ian Lane*, The British Central Africa 1908 'Internal Postage' Provisional Issue, Philatelic Collections Newsletter, No. 6, 2000.
- [8] *Tony Clayton*, Postage Stamps of the Kingdom of Italy.
- [9] *Tony Clayton*, Stamps of the Kingdom of Italy. Filiberto Alighieri Issue of 1928.

Inverted Jenny on Display at PhilaKorea 2014

Don David Price

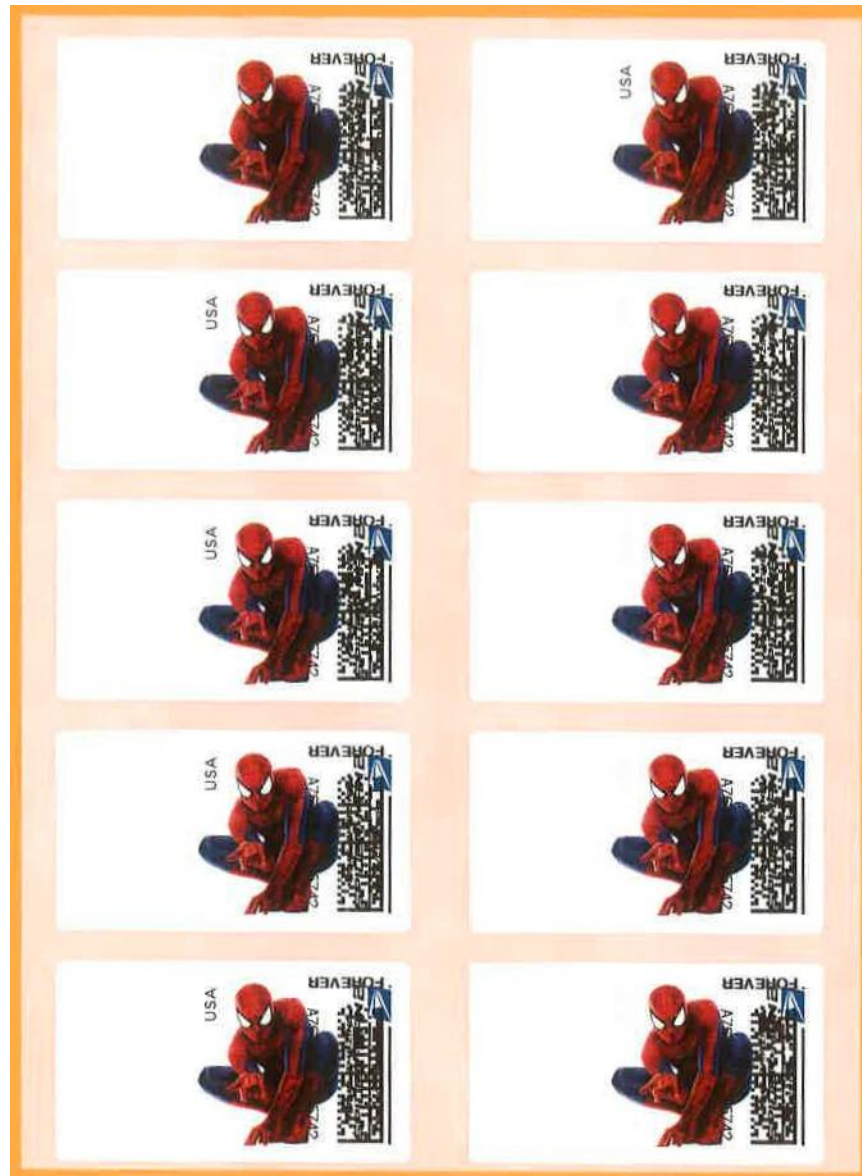


I recollect that a few years ago you published a copy of my inverted Jenny stamp (position 28); however, in August 2014, the stamp was on display in the Court of Honor, at the International (FIP) show, PhilaKorea 2014. David Feldman did an excellent job preparing the stamp display. I hope fellow EFOers enjoy seeing an EFO having so much prominence...

Editor's Note: Thanks, Don!

Historic Spiderman Inverts

John Ryskamp (philneo2001@yahoo.com)



Since the first pictorial APC Forever stamp paper appeared in 2012 (the "mailbox" stamp), collectors have been waiting for an inverted pictorial APC Forever stamp. They were bound to be rare, since it is very obvious to postal clerks, when they run test stamps after loading the paper, if the paper has been loaded inverted. All of the small stamps (the 17 service stamps plus the USPS log Forever stamp) have appeared inverted on Reindeer paper. However, not until now have the indicia designed specifically for a pictorial APC Forever stamp paper, appeared inverted on that paper.

Around November 4, 2014 (the EKU, the date I serviced 5 covers), such an invert appeared on Spiderman paper at an APC kiosk in San Francisco. Between then and the removal of the paper (November 24), I bought the examples listed below. Be on the lookout for examples which may have been purchased by unsuspecting customers and used on envelopes--or, indeed, for mint examples from purchasers who knew what they were buying! The numbers below in parentheses have been lightly penciled on the backing paper.

There is left-column (figure upright) dot herringbone embossing (in a line, affecting all left-column stamps; this is an artifact of the paper manufacturing process), square corners in the gloss block over the figure, and smooth tagging at left (Round corners and rough tagging are known on small APC stamp paper). The embossing--which is not an error--creates a second type of the error.

(continued on page 12)



Upper left: A stamp from the lower right pane from the block of 10 sold for \$27 on eBay.

Lower left: The "normal."

Catalog of Estonian Errors Published

Hubert Jakobs



The *Catalogue of Estonian Stamp Errors and Varieties* has been authored by five collectors and specialists of Estonian stamp errors – Andro Valm, Peeter Pärn, Aivar Kuuskvere, Kaido Andres and Hubert Jakobs (the compiler). The catalogue covers the years 1991–2014 (after a 50 year break – the Soviet occupation – Estonia began to issue stamps again in 1991). It took about two years to compile the catalogue and it was published by the authors (OÜ Vapimark). The catalogue has 360 pages, all illustrations in colour, hardcover, and was just published in October 2014.

The varieties have been divided into five categories: a) varieties of perforation, b) colour varieties, c) paper varieties, d) gum varieties, e) varieties and errors related to the printing process. In addition, Section F includes all known sheet varieties and Section G the proofs and essays. It provides actual market-based price information. Although the catalogue is in the Estonian language (it has an English user manual, though), all error descriptions have been translated into English and are available as a downloadable pdf file. The local retail price is €36 (about \$45).

One of the authors, Peeter Pärn, is selling the catalogue internationally on eBay for \$55 + shipping: <http://ebay.to/1BNdjW4>.

Another author, Andro Valm, has it for sale in his e-store for €36 + shipping €12: <http://bit.ly/1IVtENk>.

I, too, have a few spare copies, which I can sell for \$30 + actual shipping per copy. Please e-mail me at hubert@harta.ee.

The catalogue has its own website, <http://erim.ee>, which right now is only in Estonian, but is planned to be in several different languages. You will be able to buy the catalog there as well. Currently, you can see sample listings and get a taste of Estonian EFOs. ☆

Howard Dennis Asks Questions

I have found what looks like some interesting examples of EFOs, but I need EFOCC Members' expertise again. Can you comment on the following four items? Please send your comments to our Editor for publication in a future issue. Many thanks,

Howard P. Dennis

11 1/4

Scott 807: Given the perforations, is this a single from a booklet?

10 1/2



Scott 1057: Is this a coil single with partial plate number, given perforation of 10.

Scott 1510: Is this a booklet single?



Scott 3208: Look at the "clouds" in the upper right corner. I have been looking for other examples and found none but still curious...



Historic Spiderman Inverts

(continued from page 10)

Abbreviations used in Listings Below:

- s one line of short backing paper separation rouletting
l one line of long backing paper separation rouletting
st backing paper strip separation stub at right (figure in the upright position)
n no stub
EKE earliest known example

Listings

SINGLE - 38

- short, stub - 2 (sst1 - sst2)
short, no stub - 2 (sn1 - sn2)
long, stub - (1st1)
long, no stub - 2 (ln1 - ln2)
stub - 15 (st1 - st15) (st14 EKE)
no stub - 16 (n1 - n16)

PAIR - 32

- short, stub - 2 (2sst1 - 2sst2)
short, no stub - 2 (2sn1 - 2sn3) (2sne EKE)
long, stub - 3 (21st1 - 21st3)
stub - 10 (2st1 - 2st10)
no stub - 14 (2n1 - 2n14)

BLK 3 - 7

- short, stub - 2 (3sst1 - 3sst2) (3sst1 EKE)
long, stub - 1 (31st1)
stub - 4 (3st1 - 3st4) (3st1, 3st4 EKE)

BLK 4 - 8

- long, stub - 2 (4st1 - 41st2)
stub - 6 (4st1 - 4st6) (4st1 EKE)

ALL PIECES BELOW HAVE STUBS

BLK 5 - 5

- short - 1 (5s1)
long - 2 (511 - 512) (511, 512 EKE)
(5 1 - 5 2)

BLK 6 - 4

- short - 1 (6s1)
long - 2 (611 - 612)
(6 1) (6 1 EKE)

BLK 7 - 4

- short - 3 (7s1 - 7s3) (7s2 EKE)
long - 1 (711)

BLK 8 - 5

- short - 1 (8s1)
long - 3 (811 - 813) (812 EKE)
(8 1)

BLK 9 - 4

- short - 1 (9s1)
long - 3 (911 - 913) (913 EKE)

PANE 10 (largest possible multiple) - 6

- short - 5 (10s1 - 10s5) (10s2 EKE)
long - 1 (1011) ☼

Questions/Answers

Edited by Cemil Betanov

William Kelly asked following question: I am interested to know if anyone has ever seen or is aware of any EFOs associated with the US Scott 929, the 3 cent Iwo Jima issues of 1945? Thus far, I have only seen one paper crease.

Stan Goldfarb replied: I am not aware of any additional EFOs of this issue, either.

Your Editor's note: If you know of any EFOs of this issue, please drop me a note.

Lundy Misprints



ATTENTION:

WHEN THE TIME COMES TO SELL, YOU DESERVE OUR COMPLETE ATTENTION



*These are just a few of the many auction catalogs
we have created for our important consignors*

These catalogues take time and they require attention—attention to the careful lotting of your collection, thorough research and thoughtful descriptions.

The staff at Matthew Bennett International is committed to giving you our complete time and attention so that you get the results you deserve—a lasting legacy for your labors and maximum realizations for your stamps and covers.

To find out how to get the most attention for your consignment, please contact us at (410) 647-1002.



MATTHEW BENNETT INTERNATIONAL

8096 Edwin Raynor Blvd, Suite B • Baltimore, MD 21122

info@bennettstamps.com • www.bennettstamps.com

(410) 647-1002

PerfOrations: Inverts – Part 2

John M. Hotchner

P.O. Box 1125, Falls Church, VA 22041, jmhstamp@verizon.net

In Inverts Part I in the last issue, we looked at the types of invert that can be found affecting basic US and foreign stamp designs. Many of them are commonly found and are inexpensive. Just because it is an invert and impresses your non-collecting friends, does not mean it will challenge your wallet. That is especially true of the area we will cover in this column: overprints and surcharges.

But before we get to that, I want to revisit Part I long enough to look at the Somali Coast stamps shown here in Figure 1. In that column I included the category “Intentional Inverts”, to which these stamps belong. I recently stumbled over an article titled “A Fantastic Fantasy” by Robert T. Kinsley in the April, 1993, issue of the *France & Colonies Philatelist*. It describes the inverted-center stamps of the 1902-03 French Somali Coast issue, which, as Kinsley notes, “rank among the major philatelic frauds of this century, ...”

Here, in abbreviated form, is what he has to say about these: “These issues were printed in two stages, border first and central vignette second, by two private printing firms...”

“A few sheets with inverted centers were inadvertently included in normal stock and typically found their way into the hands of a stamp dealer, who offered them at prices

commensurate with desirable and legitimate errors.

“Shortly thereafter similar invert appeared for sale at a small fraction of the original dealer’s price, giving rise to extensive demands for official investigation. As a result it was discovered that a worker at the printing firm of Wittman was using genuine stamp paper to make clandestine printings after normal working hours.

“Whereas the inverted centers are the best known of the fraudulent products, very little has been written on the other, even more outrageous but seldom seen varieties. These include misregistrations of varying degrees, central vignette printing sideways instead of fully inverted, and placement of central vignettes of low-denomination values within the borders of higher denominational designs.

“There also exists an even more incredible variety, wherein the central design of riders on a camel face in the opposite direction from the normal designs....”

The group in Figure 1 includes invert on perforated and imperf stamps, and for good measure an imperf pair with the vignette sideways.

Overprints and Surcharges Categories

So, on to the meat of this column. Eight categories will be presented, along with some subcategories. It is the first time I have tried to categorize these in any detail, and since it is based on my own collection, which is incomplete (Indeed it is probably not possible to form a complete collection!). It may be possible to expand the list. Here we go.

I. Basic Invert

There are thousands of examples worldwide. Shown here in Figure 2 are some examples from different areas of the world, including a very inexpensive “I.R.” overprint on a U.S. 19th century stamp (Scott R155Ah, with a mint cat. Value of \$2.75), and a very scarce usage of a 1962 Dag Hammarskjöld overprint (the central stamp) on a Jordanian cover. In Figure 3 is a pair of Canadian Air Mail blocks on which the surcharge is inverted. The point of showing these is to mention that inverts can be placed both where they are expected, and where they are off center from where they might have been expected to be.



Figure 1.



Figure 2a.



Figure 2b.

II. Diagonal Inverts

In Figure 4 is a pair of Honduran stamps; both of which have inverted overprints, but each is facing in a different direction. Pairs are unusual. Mostly these are seen as single stamps.

III. Pairs With One Invert

A. One stamp is normal, the other has an invert, as shown with the vertical Costa Rica pair on cover in Figure 5, and in the Armenian pair inset in Figure 5 (The “5” is inverted on the second stamp.).



Figure 3.



Figure 4 above, Figure 5a below.





Figure 5b above, Figure 6 below.



B. One stamp is missing the overprint. The other has the overprint inverted, as shown on the Guatemalan and Peruvian pairs in Figure 6.✪

Editor's Note: This column will be continued in the next issue.

If you have a question, or a possible topic for John to cover in a future issue, please write to him at P.O. Box 1125, Falls Church, VA 22041-0125, or e-mail him at jmhstamp@verizon.net.

Secretary's Report

Scott Shaulis

scottshaulis@comcast.net



New Members

Chris Masters P. O. Box 781 Commerce, TX 75429	1477	William N. Kelly 2147 Warwick Dr. Oldsmar, FL 34677-1951	1478
Mark Eastzer P. O. Box 170 Lynbrook, NY 11563	1479		

Welcome aboard to our new members!

Dues notices for many members expiring in 2014 are on the way. We hope for a 100% retention rate for 2015. Thanks for your continued support of the Club.

Respectfully submitted,
Scott ✪

Treasurer's Report

David Hunt

dhhunt@ptdprolog.net



Report for the Quarter Apr 1 – June 30, 2014

Beginning balance:		\$3995.96
Income	Dues	\$117.00
	Auction Proceeds	1300.00
	Samples	3.00
Expenses	Printing costs	(806.60)
	Postage costs	(299.22)
Ending balance:		\$4310.14

Report for the Fiscal Year July 1, 2013 – June 30, 2014

Beginning balance:		\$4204.78
Income	Dues	\$2239.00
	Auction Proceeds	1300.00
	Samples	30.00
	Transfer from Life Member Fund	210.00
	Donations	993.00
Expenses	Printing costs	(3141.75)
	Postage costs	(1072.53)
	Mailing samples	(9.12)
	Mailing solicitation letters	(193.24)
	Auction insurance	(250.00)
Ending balance:		\$4310.14

Respectfully submitted,
David H. Hunt, Treasurer ✪

An Important Note to Our Members

According to our Club's by-laws, we need to hold an election for a new Board in 2014. At the present, we have the following candidates for the upcoming election:

- President: Wayne Youngblood
- Vice President: You???
- Treasurer: David Hunt
- Secretary: Scott Shaulis

As you can see, we still need a volunteer to help with the Vice President's tasks. See the "From Your Editor" column on page 3 for more details. Do not hesitate to contact Dave, Scott or Cemil if you have any questions, such as "what would I have to do?" or "are there stock options involved?"

If we are not able to locate a candidate by the time the next issue is published, we will proceed to run an election with an open slate for the post of Vice President.

YES! You can do it, and we can help!

EFOCC Auction Rules for Consignors

Preparing Lots

Please use a blank form from a recent copy of the EFO Collector. Photocopies are fine. Please use a separate form for each lot.

Secure each lot to the front of the form; attach large lots to the reverse side. Protect all items with mounts, glassine, etc., and stiffeners, if necessary, but **be sure** item/items can be easily removed by Auction Director for examination and/or photographing. Do not use staples. Attach each item so that the description can be easily read. A simple and easy way to mount lots is to do so on dealer sales cards, or in glassines mounted face down for easy removal.

Include a reserve (minimum bid) or write "none". Lots may be revised to accurately describe items; or returned if necessary. Your name and EFOCC number must be on the consignment form, however, to preserve anonymity, these are removed from the consignment sheet before sending item to successful bidders.

Send consignments to David Hunt, 45 Fairway Drive, Denver, PA 17517. Use **insured** or **registered** U. S. Mail.

Consignor Fees

Consignor commission is 10% of the hammer price, with a minimum bid of 50 cents per lot.

Unsold lots incur a 50 cent fee per lot, and the consignor pays return postage and insurance.

Expenses and printing constraints make it impractical to picture every lot, especially those which are large in size. The EFOCC will exercise discretion in picturing lots.

Consignor Special Instructions

To save postage and labor, EFOCC can automatically re-submit unsold lots with lower minimums in a future auction, **if you instruct EFOCC clearly what to do**.

If you send duplicate or very similar lots, it is consignor's responsibility to state clearly if you would like to have these placed in different sales. Generally, EFOCC places all items received in the same sale to minimize paperwork.

Consignment/Payment Timing

EFOCC receives consignments continually and prepares them for subsequent sales, roughly on a first-in/first-out basis. However, large lots may be spread over several auctions.

After the close of each sale, unsold lots are offered to bidders on a first come-first served basis for \$1 over the reserve with no buyer's commission or postage. This increases total sales, makes more bidders happy, and sells more lots for consignors, all for very little additional effort.

EFOCC needs approximately one month after auction's closing date to determine successful bidders, prepare and mail invoices, mail lots, receive payment from winners, list after sale lots and accept their offers, etc., etc. Thus, consignors can expect to receive payment about four to six weeks after an auction closes.

Lot #	Catalog	EFOCC Auction #137 – Lot Descriptions	Cat Val	Minimum Bid
1	599	2c Washington coil line pair miscut with partial plate number. NH with small gum disturbance.		\$7.50
2	1305	6c FDR misperf coil pair NH		\$15.00
3	1305Ej	15c O.W. Holmes imperf pair NH		\$30.00
4	1519a	10c Crossed Flags imperf coil pair. NH with spot of missing gum, may be natural.		\$20.00
5	1520b	10c Jefferson Memorial imperf pair with miscut causing change of legend NH		\$30.00
6	1615C	8.4c Piano precancelled coil line triplet. Right pair is one perf hole away from being imperf between NH		\$10.00
7	1498	8c Bicentennial great color shift NH		\$35.00
8	1596	13c Eagle and Shield change of legend misperf. NH		\$10.00
9	1615Cf	8.4c Piano precancel gap strip of four imperf. NH		\$30.00
10	1616	9c Capitol coil line strip of four with miscut showing partial plate numbers. NH		\$10.00
11	1617b	10c Petition imperf pair - dull gum. NH		\$30.00
12	1618b	13c Liberty Bell imperf pair NH		\$11.00
13	1618C	15c Flag coil pair missing some of the gray creating 5c stamps. NH		\$25.00
14	1895	20c Flag misperf coil pair NH		\$10.00
15	1891a	18c Flag imperf strip of four with horizontal die break on two middle stamps beneath red stripes. NH		\$50.00
16	1895	20c Flag coil pair with red shifted into the blue field of the flag. NH		\$24.00
17	1895	20c Flag coil pair with underinking of black NH		\$28.00
18	1895	20c Flag coil imperf strip of six with plate no. 9 on third stamp. NH		\$125.00
19	1903a	9.3c Mail Wagon miscut coil pair with precancel gap NH		\$15.00
20	2115f	22c Flag imperf coil pair with miscut. Not hinged but with disturbed gum and small thin.		\$3.50
21	2115f	22c Flag imperf coil pair with miscut. NH		\$35.00
22	2133b	12.5c Pushcart precancelled imperf pair NH		\$33.00
23	2134a	14c Iceboat imperf coil pair NH		\$50.00
24	2136b	25c Breadwagon imperf coil strip of four NH		\$20.00
25	2261a	16.7c Popcorn Wagon imperf coil pair, miscut as always (see Scott listing)	\$175.00	\$120.00
26	2263a	20c Cable Car imperf coil pair NH	\$50.00	\$35.00
27	1731	13c Carl Sandburg plate no. block with perf shift putting plate number inside stamp. NH		\$90.00
28	812	7c Jackson misperfed block NH		\$32.00
29	1453	8c Old Faithful color shifts create 'fourth' person		\$12.00
30	C86	11c Electronics plate no. block with smear of black intaglio lettering. NH		\$7.50

EFOCC Auction Rules for Bidders

How to Bid

Please bid on a consignment form from a recent EFO Collector. A photocopy is fine. Include your EFOCC membership number. For new bidders and non-EFOCC members, please include your APS membership number. Sign your bid sheet to acknowledge acceptance of the EFOCC auction rules; unsigned forms can not be accepted. Submit bids to David Hunt, 45 Fairway Drive, Denver, PA 17517, e-mail to dhhunt@ptd.net.

Bidding Precautions

Minimum bids are not estimates, but are true reserves established by the consignors. Bids below the listed reserve will not be accepted.

Bidders are responsible for inaccurate bids. Bids do not have to be typed, but, please, be sure numbers and amounts are clearly legible. Confirm phone and e-mail bids with a written bid sheet.

Auction Bid Increments

Please use the following increments when bidding and/or assigning reserves to consignments. Lots are sold to the highest bidder at one advance over the second highest bid.

EFOCC reduces non-conforming bids to the next lower increment. For example, a bid of \$39.50 will be entered as \$39.00.

Special Bidding Instructions

As the EFOCC auction is a small auction, special instructions cannot be easily accommodated. EFOCC cannot accept "BUY" bids, nor "INCREASE BY...%" bids. **Please, make your final, best, and highest bid and you will get the lot at the lowest price available.**

Bidders' Payments

A 10% buyer's premium is added to the hammer price of each lot. Buyers pay postage, plus insurance on lots valued at over \$10.00.

Payment is due upon receipt of invoice. If you will be out of town for a while just after an auction closes, or are moving to your summer home about that time, please let EFOCC know at the time you place your bids.

Returning Lots

Within five (5) days of receipt of awarded lots, you may return any lot which is not described correctly provided such lot is still in its original condition. If an expertizing certificate is a condition of bidding, please inform EFOCC of this before auction closes.

One Final Request

Please **bid generously on donation lots** whose monies go entirely to the benefit of the EFOCC.

31	634d	2c Washington miscut booklet pane showing partial plate number. NH		\$6.00
32	1945a	20c Cactus block with engraved colors shifted up		\$50.00
33	1338	6c Flag mail early block of six. Very light perf pin impressions in right margin just barely visible on gum side. Traces of black (ink?) on gum, could be from light adhesion to another stamp. NH		\$30.00
34	1945a	20c Cactus block with perfs shifted up. NH		\$60.00
35	422	Argentina block of six with extra comb perf strike at left. NH		\$25.00
36	2279a	E' coil, imperf pair NH		\$35.00
37	2280	25c Flag, 2 coil pairs with smears at top/bottom NH		\$25.00
38	2280c	25c Flag imperf coil pair, pre-phosphorized paper NH	\$10.00	\$6.00
39	2458a	10c Tractor Trailer imperf coil pair NH		\$90.00
40	2463a	20c Cog Railway imperf coil pair NH	\$75.00	\$65.00
41	2603a	Bulk Rate imperf coil pair NH	\$20.00	\$11.00
42	2607c	23c USA imperf coil pair NH	\$75.00	\$55.00
43	2904c	(5c) Non-profit imperf coil pair. Counting number 03690 on the back. NH	\$350.00	\$175.00
44	2915	32c Flag coil pair with blue smear NH		\$18.00
45	3632a	37c Flag imperf coil strip of four NH		\$100.00
46	3466	34c Statue of Liberty misperf coil pair NH		\$15.00
47	QE4a	25c Special Handling A and second T of STATES joined at top. Scott listed variety. Used	\$22.50	\$10.00
48	806	DONATION 2c Adams overinked NH		\$8.00
49	807	3c Jefferson overinked NH		\$10.00
50	807	3c Jefferson underinked NH		\$5.00
51	810	5c Monroe overinked NH		\$6.00
52	829	25c McKinley overinked NH		\$15.00
53	2368	22c Christmas color shift NH		\$25.00
54	1381	6c Baseball change of design black color shift NH		\$50.00
55	1376	5c Women's Clubs pink color shift NH		\$3.00
56	WX76	Two 1935 Christmas Seals with different offsets on the back		\$15.00
57	2284-5	25c Birds, pair with color shift NH		\$7.50
58	1472	8c Santa misperf creates change of design NH		\$25.00
59	1511	10c Zip Code multiple color shifts NH		\$15.00
60	1468	8c Mail Order black color shift creates two-tailed cat NH		\$5.00
61	2534	29c Savings Bonds tan color shift up and red color shift right NH		\$15.00
62	1375	6c Alabama perf shift NH		\$13.00
63	C115a	44c Airmail imperf pair NH		\$270.00
64	1369	6c American Legion misperf NH		\$4.00
65	1845	2c Stravinsky strip of three with extra-wide and misperfed stamps NH		\$30.00
66	1416//18	6c Christmas Color misregistration gives blurry appearance NH		\$3.00
67	1509a	10c Crossed Flags pair with plate numbers, imperf between. Light crease at LR. Blind perfs between stamps and margin	\$40.00	\$20.00
68	1509	10c Crossed Flags block of four with small red shift NH		\$3.50
69	2877a	G rate make-up stamp, imperf pair NH	\$150.00	\$110.00
70	1338Fi	8c Flag imperf block of four NH		\$40.00
71	1597	15c Flag transition block of six ; bottom pair perforated, middle pair blind perfs, top pair imperf. NH but slightly disturbed gum		\$50.00
72	907	2c Victory block of four with double paper. No gum		\$24.00
73	2760b	1993 Flowers pane missing black NH	\$375.00	\$125.00
74	2172	5c Hugo Black block of four dry print NH		\$5.00
75	1395b	8c Eisenhower miscut booklet pane showing partial plate number NH		\$5.00
76	C78a	11c Airmail miscut booklet pane NH		\$14.00
77	805b	1.5c Martha Washington pair imperf between. Scarce, more commonly seen as a precancel, which is what Scott lists as "used". NH	\$160.00	\$90.00
78	1799a	15c Christmas imperf Zip block NH	\$180.00	\$140.00
79	1842a	15c Christmas Stained Glass imperf pair NH		\$40.00
80	1485	8c Jeffers misperf with EE bars into stamp NH		\$13.00
81	1484a	8c Gershwin margin single imperf horizontally. Cat. Val for pair is \$175. NH		\$30.00
82	1439	8c CARE pair, one with problem of purple ink. No gum		\$5.00
83	1529	10c Skylab misperf NH		\$9.00
84	1596	13c Eagle and Shield change of legend misperf. NH		\$9.00
85	1286	12c Henry Ford change of legend misperf NH		\$14.00
86	1804	15c Banneker misperf NH		\$14.00
87	2013	20c Mary Walker misperf NH but with 9mm x 4mm spot of disturbed gum with small thin.		\$12.00
88	1287	13c JFK 50% misperf NH		\$26.00
89	1339	6c Illinois color shift NH		\$22.00
90	908	1c Freedoms misperf NH		\$5.00
91	C91-2	31c Wright Bros pair with color shift. No gum		\$4.00
92	C91-2	31c Wright Bros pair with color shift. NH. This is much the same shift as the previous lot, but this one has gum.		\$25.00
93	1823	15c Bissell misperf with top margin NH		\$60.00
94	940	3c Veterans double paper with tape and rejection mark. NH		\$30.00
95	953	3c G.W. Carver pair missing perfs NH		\$6.00
96	926	3c Motion Pictures overinked NH		\$3.00
97	215	4c Jackson with pre-printing paper fold. Small thin next to fold. Unused, no gum.		\$35.00
98	R40c	15c Inland Exch. With double row of perfs. Used		\$12.00
99	1338	6c Flag misperf NH		\$15.00

100	901	3c Defense pair missing some perf holes NH		\$4.00
101	1294	\$1 O'Neill change of legend misperf NH		\$23.00
102	1701a	13c Christmas imperf pair. NH but with some fingerprints on gum.		\$50.00
103	2092a	20c Wetlands margin single imperf vertically NH		\$100.00
104	2518	"F" Flower coil stamp with color shift NH		\$5.00
105	702	2c Red Cross red shift. LH corner crease		\$13.00
106	702	2c Red Cross red shift. NH		\$7.00
107	702	2c Red Cross red shift. Hinge remnant		\$7.00
108	702	2c Red Cross red shift NH		\$7.00
109	1471a	8c Christmas pink omitted (angel's face) + normal. NH	\$125.00	\$75.00
110	1789d	15c John Paul Jones vertical pair, imperf with horizontal gutter between. NH	\$165.00	\$125.00
111	1789Pg	15c John Paul Jones vertical pair, imperf with horizontal gutter between. NH	\$700.00	\$350.00
112		DONATION six stamps with minor efos. The Fort Snelling stamp looks like a changeling to me, but I don't know for sure. Used		\$1.00
113	1542	10c Kentucky engraved black shifted left NH		\$10.00
114	1338F	8c Flag misperf NH		\$6.00
115	1802	15c Vietnam Vets background tan is underinked and streaky. Shown next to normal. NH but disturbed		\$20.00
116	811	6c J.Q. Adams fold and miscut give almost a gutter pair. No evidence of fold on these stamps. NH		\$45.00
117	1608	50c Lamp misperf with bottom margin NH		\$25.00
118	1610	\$1 Candleholder engraved brown shifted down NH		\$20.00
119	1580	1975 Christmas black shifted to left NH		\$8.00
120	1414	6c Christmas Color misregistration gives blurry appearance NH		\$3.00
121	2072	20c Love misperf NH		\$15.00
122	937	3c Alfred E. Smith misperf pair NH		\$12.00
123	1547	10c Energy color shift NH		\$9.00
124	E17	13c Special Delivery smear on left side NH		\$6.00
125	2401	25c Montana imperf pair - printer's waste. No gum.		\$160.00
126	1906b	17c Electric Auto imperf coil pair NH	\$160.00	\$115.00
127	1907a	18c Surrey imperf coil pair NH	\$120.00	\$95.00
128	3257a	H' rate make-up black (lettering) omitted, with normal NH	\$150.00	\$110.00
129	1359	6c Erikson reverse offset NH		\$50.00
130	1359	6c Erikson vertical pair, engraved printing shifted up NH		\$20.00
131	3123b	32c Love imperf pair NH	\$150.00	\$125.00
132	669	1c Nebraska block of 8, bottom row has 'stretched overprint'. NH but 2 stamps have fingerprints.		\$65.00
133	1338	6c Flag block with horizontal perfs shifted to reverse design. NH		\$30.00
134	1584	3c Ballot Box misperf NH		\$12.00
135	1856	14c Sinclair Lewis misperf NH		\$6.00
136	2201b	22c Ameripex complete booklet, both panes with black omitted NH	\$100.00	\$65.00
137	2474b	25c Lighthouses booklet pane with white engraved omitted - no denominations NH	\$90.00	\$50.00
138	1934	18c Remington vertical pair with engraved brown shifted down 4mm NH		\$20.00
139	1706-9	13c Pueblo Art misperf strip of four NH		\$35.00
140	2023	20c Francis of Assisi misperf pair NH		\$6.00
141	2585	1991 Christmas imperf booklet pane of four with plate number. NH. Printer's waste. Small spot of disturbed gum.		\$175.00
142	1629a	13c Spirit of 76 strip of three with color shift, note bottom legend. NH		\$11.00
143	C81	21c Airmail engraved colors shifted up NH		\$20.00
144	1272/C114	Collection of 10 different with small color shifts. All mint NH		\$15.00
145	805/2102	Collection of 10 different small misperfs, no coils, all mint NH		\$15.00
146	551/C39	Collection of 88 different small misperfs, no coils, all mint NH		\$130.00
147	702/C85	Collection of 37 different stamps with small color shifts. Some duplication with lot 144. All mint NH		\$55.00
148	1510	10c Jefferson Memorial with change of legend misperf on cover postmarked in 1975. Used		\$12.00
149	UC2+702	Airmail cover to Germany with #702 x 4, 3 being plate number singles. Red crosses in different locations. Used		\$32.00
150	UX39a	1c Jefferson postal card - misplaced surcharge reading up. Unused. UR corner bent.		\$20.00
151	UX40a	1c Lincoln postal card with vertical surcharge		\$5.00
152	U596e	15c 1980 Olympics envelope. All colors omitted but embossed 'USA 15 c' is present. Unused		\$225.00
153	U596a	15c 1980 Olympics envelope. Black color omitted. Red 'USA' is misaligned with embossing. Unused		\$160.00
154	UC3	6c Airmail envelope with folding error at bottom leaving red and blue lozenges on back. Unused		\$30.00
155	1843b	15c Christmas imperf plate strip of 20. Circular 10mm patch of gum missing behind yellow color bars at bottom of margin. No stamps affected. NH	\$500.00	\$300.00
156	1711	13c Colorado misperf plate strip of 20 with gutter shifted left into third column of stamps		\$375.00



Auction 137 closes on January 31st, 2015
View large auction pictures in color at <http://www.efocc.org>



Auction 137 closes on January 31st, 2015
View large auction pictures in color at <http://www.efocc.org>



Auction 137 closes on January 31st, 2015
New large auction pictures in color at <http://www.efocc.org>



Auction 137 closes on January 31st, 2015
View large auction pictures in color at <http://www.efocc.org>

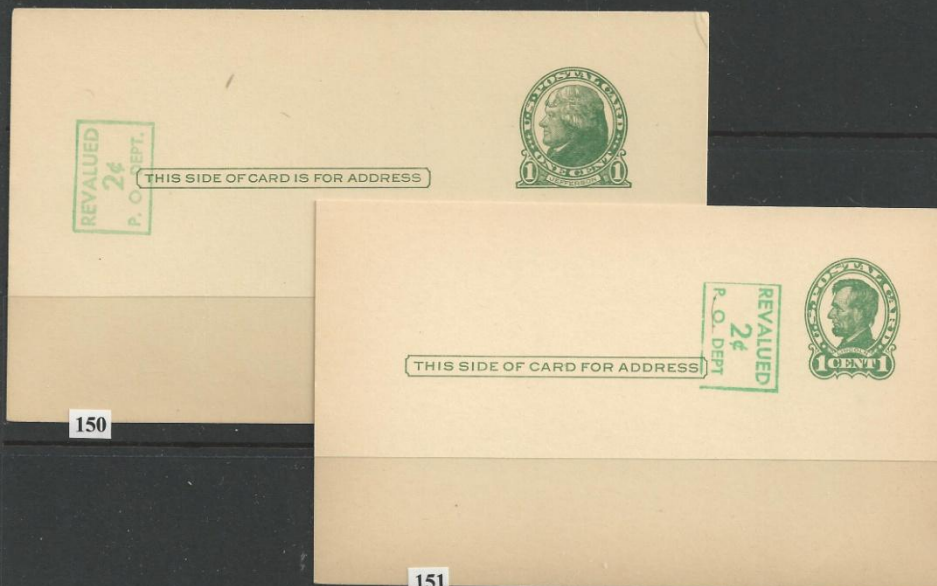


EFOCC Auction 135 Realizations (Closed July 31st, 2014)

2 \$13	3 \$7.50	7 \$13	9 \$10	15 \$15
17 \$10	19 \$15	20 \$8	22 \$12	26 \$5
27 \$5	34 \$25	35 \$6.50	36 \$170	40 \$25
42 \$7.50	46 \$15	48 \$26	49 \$26	50 \$11
51 \$12	53 \$26	54 \$4.50	55 \$36	56 \$25
57 \$15	59 \$3.50	60 \$18	61 \$30	62 \$60
65 \$20	67 \$15	68 \$13	69 \$15	70 \$9
73 \$23	75 \$7	83 \$5	85 \$43	90 \$40
93 \$36	94 \$12	102 \$39	105 \$7.50	110 \$25
112 \$41	113 \$67.50	115 \$20		



Auction 137 closes on January 31st, 2015
 View large auction pictures in color at <http://www.efocc.org>



Lot 155

EFOCC Auction Consignment Form

EFOCC use – only ⇒ AUCTION #:

LOT #:

Consignor: _____ Address: _____ _____ Telephone: (____) - _____ Email/Fax: _____ EFOCC Membership No: _____ APS Membership No: _____	Country (if not U.S.): _____ Catalog No. _____ _____ Catalog Value: _____ _____	Condition (circle): NH LH HH HR NG USED Please check if this is a donation lot: <input type="checkbox"/> Please note Minimum Bid: \$ _____
--	---	--

Description of item: {Please note any faults and fasten lots below this line or on the reverse side}

Instructions: Fill in all information. Attach each lot to the front of one form, using a stock card, face-down glassine or other mount. Use separate rigid sheet for larger lots and attach a completed form. No staples - please. Make sure it is easy for us to remove and re-insert each lot.



Send consignment form(s) with lot(s) to: David Hunt, 45 Fairway Drive, Denver, PA 17517
 For your protection, we recommend that you send lot(s) by registered or insured mail.



EFOCC Auction Bid Sheet

Name: _____ EFOCC #: _____ *New Bidders.....APS Membership appreciated: _____*
 Address: _____ Phone: (____) _____ *Please limit my purchases to:*
 City: _____ State: _____ Zip: _____ \$ _____

Please execute the following bids for me in EFOCC Auction # _____

 {Signature - all bid sheets must be signed}

 {Date}

Earliest postmark wins tie bids!!

Lot#	Bid	Lot#	Bid	Lot#	Bid	Lot#	Bid	Lot#	Bid	Lot#	Bid

Postage will be charged to the bidder. A 10% buyer's premium will be added to successful bids.
 Mail bid sheets to: David Hunt, 45 Fairway Drive, Denver, PA 17517 or email to: dhhunt@ptdprolog.net

Auction 137 closes on January 31st, 2015
View large auction pictures in color at <http://www.efocc.org>



Lot 156 below



For over 60 years...



American philately's #1 dealer in major errors.



Now also your source
for investment grade
U.S. classics.

Jack Nalbandian, Inc.

Post Office Box 71
East Greenwich RI 02818
Toll Free: (877) 742-6168
Phone: (401) 885-5020
nalbandianj@earthlink.net

www.nalbandstamp.com

Missing Something?

We have it. If you're looking for Errors, Freaks & Oddities, you'll find them in our auctions.

Each of our auctions features hundreds of unique EFOs from the USA and around the World.

Looking to sell? We are the official auctioneer at six major stamp shows each year.

For information on how to bid or consign, contact us today!

1-800-782-0066

consign@RegencySuperior.com
www.Regency-Superior.com



Your Source for Buying, Selling & Consigning Errors, Freaks & Oddities

STAMPS • COINS • SPACE • AUTOGRAPHS

REGENCY SUPERIOR

Experienced Auctioneers Since 1929

229 N. Euclid Avenue • Saint Louis, MO 63108



ifsa
Int. Federation of stamp
dealers' associations

