

A Publication of the
EFO Collectors' Club
APS Affiliate #103
ATA Chapter #94

www.efocc.org

The EFO Collector

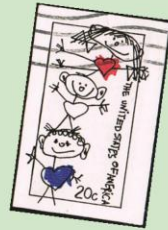


October - December 2012 Volume XLI No. 2 Whole Number 169 ISSN 1099-7377

Printer's Waste

Bob Dumaine Auctions a Stamp

Hotchner on



Auctions a Stamp



The Auction

Inside This Issue

Hunt, Dumaine & Betanov: An Interesting Auction

David Hunt: Page From My Album

Cemil Betanov: Your Editor's 2¢

Bill Lehr: 1925 Provisional Surcharged Envelopes

John Hotchner's PerfOrations: Collecting Printer's Waste – Unethical or a Concession to Reality?

Results of Auction 128

8	From Your Editor	3
9	Letters to the Editor	3
9	Exhibiting EFOCC Members	5
11	EFOCC Member Post	5
	Results of Auction 127	12
15	Secretary's Report	17
	Treasurer's Report	17
26	David Hunt Presents Auction 130	18



To Err is Human, To Find is Divine



Upside down or grounded, Siegel sells them best.



Robert A. Siegel

AUCTION GALLERIES, INC.

For information about our auctions or to request a copy of the next sale catalogue and newsletter, please contact:

Robert A. Siegel Auction Galleries, Inc., 60 East 56th Street, 4th Floor, New York, N.Y. 10022

Phone (212) 753-6421 Fax (212) 753-6429 E-mail: stamps@siegelauctions.com

For on-line catalogues, prices realized and the Siegel Encyclopedia

www.siegelauctions.com

From Your Editor



Here you have another issue of *The EFO Collector* which, I hope, you will enjoy. This issue comes, if all falls in place, about two months after the last one, which was delayed. I would like to explain why it was late, because I received several queries.

The previous issue was about 95% finished when Superstorm Sandy struck at the end of October. My home was spared damage, although we had no power for about eight days. My employer's facilities were much more affected, and this prevented me from working on any Club business until around Thanksgiving. Finally, I sent the issue to the printer on November 26th. I expected that the issue would be mailed within a week to 10 days at most, based on past experience. Dave Hunt, who did the mailing, did not receive the issue until December 24th. Not sure what caused the delay on the printer's side, but the printing took close to a month. He then mailed copies to members right after Christmas. So, an issue that I expected would be mailed out mid-November, ended being mailed right after Christmas.

In our last issue, Dave Hunt brought the issue of mailing costs to the attention of the membership. There was quite a bit of e-mail exchange about this topic, which is mostly presented below, under the title “Letters to the Editor”. I recommend that all our Members read it carefully. I then put a summary of action points. Please be sure to provide me feedback by mail or e-mail. I will forward the feedback to our Board Members to decide how to proceed.

Happy hunting!

Cemil ★



Letters to the Editor

My copy of The EFO Collector, July - September 2012 issue, arrived today (December 29, 2012). Because it was shipped in an envelope, it arrived in great condition. I have membership in at least a dozen U.S. philatelic organizations. In the course of a year, the hard copy of these organizations' periodicals will arrive 4-6 weeks after the publication date. Sometimes later. About 25% of the periodicals sent to me not enclosed in an envelope or similar wrapper will arrive damaged in some way. Usually, by the postal processing machines. About every two years I will receive a periodical in one of the USPS famous "body bags".

I am a cover collector. First Day Covers, Military Postal History, Auxiliary Markings on any type cover processed through the mail through any period of time, are my main interests. I will purchase a stamp that is considered to meet any of the descriptions of EFOs as long as it relates to my topical collections of covers. I consider my membership in the EFO

The EFO Collector | www.efocc.org

Collectors' Club an asset to learning more about stamps with potential errors on my covers.

So, stamps being used on the envelopes used to ship each issue of our Journal are not important to me. I realize my opinion may be different if I were a stamp collector. What I currently do with ALL my mail that arrives with stamps is to pass the envelopes on to friends and clubs that may have an interest in the stamps or modern postal history.

In summary, I am in agreement with Cemil's personal recommendations found at the bottom of the second column on page 12.

As a side note, I have been collecting "covers" since 1962.

Norman L. Elrod
McMinnville, TN

I read your comments on page 12 of the current issue of the EFO Collector. Here are some thoughts I have.

My vote is to switch to bulk mail and continue to use an outer envelope. Unless we use sticky tabs to seal the edges of the magazine (would the printer charge us for applying sticky tabs too?), the pages are going to open up in the mail stream and become damaged. Then you have to deal with sending out replacement copies which is a hassle and extra cost.

As a stamp collector, yes, it's nice to get mail with stamps on it. But our postage costs are a lot of money. You can probably count on one hand the number of members who will say, "Yes, I use the stamps from the mailing in my collection."

One option may be to charge, say, \$5 more per year in dues if you want the EFO Collector mailed to you by First Class Mail. Would this be manageable by the printer? Therefore, most of the members get bulk mail. A handful would pay extra for first class mail. The printer wouldn't charge us \$50, but maybe \$10 for the reduced number of members who opt for First Class mailings? Could we separate our mailing labels into Bulk mail and First class mail groups?

As I look over the Treasurer's report, I see that we ran about \$1200 in the red for the past fiscal year.

With just over \$3400 in the treasury, we are about 3 years away from extinction unless we reverse this trend. Here are my thoughts on how we can get closer to a break even basis.

My assumptions:

1. We mail to about 175 active members (\$263.23 postage costs in the report / \$1.50 per issue = ~175 members)
2. Printing costs are about \$5.75 per issue for color (\$1026.34 printing costs in the report / 175 members = ~\$5.75 per magazine).

My idea:

1. Switch to bulk mail which will save \$650/year (175 members * 4 mailings * \$0.93 savings over first class = \$650)
2. Allow members to receive the EFO Collector via email and NOT have a copy mailed to them. Suppose 20 members do this. That would save us an additional \$460/year (20 members * 4 mailings * \$5.75 per issue for printing = \$460).

Those 2 changes would save us about \$1100/year. Give or take a couple of bucks, we'd be on a break even basis.

I enjoy the EFO Collector. Personally, I don't care if I get a

continued on page 10

Authors and contributors have express permission to reuse of their material elsewhere. Except for material reprinted herein, or material individually copyrighted by the author, material herein may be reprinted elsewhere as long as full credit is given to The EFO Collector, citing the issue date and number and giving the address of the EFOCC Secretary. ♦ The EFO Collector is published quarterly, in March, June, September and December. The submission deadline for any issue is the 15th of the month preceding the issue, e.g. 2/15, 6/15, 8/15 and 11/15. Send or e-mail editorial material directly to the Editor. Sample copies of The EFO Collector are available for \$3 from the Secretary. ♦ Membership includes subscription to The EFO Collector. Membership fees are as follows:

	Members with addresses in the U.S. or Canada	Members with addresses elsewhere
One year's dues	\$17.00	\$34.00
One year membership renewal	\$17.00	\$34.00
Two year membership renewal	\$32.00*	\$64.00*
Life membership	\$300.00†	\$450.00

Please make membership renewal checks to "EFOCC" and mail to Treasurer. Charges can be paid via PayPal, subject to a \$2 convenience fee, e-mail Secretary for details. [*] Each additional year prepaid at the same time is \$15/\$30. [†] \$240 for those older than 65.

Advertising Rates

	Per Issue	Contract 4 Issues
Full page in color	\$100.00	\$328.00
Half page in color	\$80.00	\$280.00
Quarter page in color	\$65.00	\$244.00
Cover location in color	\$125.00	\$400.00
2 page center spread in color	\$150.00	\$450.00

Single insertion advertisements and from those who are not APS Members must be fully prepaid. Four-issue contract rate advertisers will be invoiced in full upon publication of their first ad. 20% discount for black & white advertising, The deadline for ad copy is the 15th of the month preceding the issue. General advertisement inquiries should be directed to the Advertising Director at moek78@msn.com. Advertisement copy related inquiries should be directed to the Editor. Ad payments should be directed to Treasurer. Please make checks payable to "EFOCC".

EFOCC Officers (2012-2014)

President	Jerome V. V. Kasper P. O. Box 3470, Clovis, CA 93613-3470
Vice-President	Wayne Youngblood
Auction Director	David Hunt 45 Fairway Drive, Denver, PA 17517
Treasurer	David Hunt 45 Fairway Drive, Denver, PA 17517
Secretary	Jim McDevitt 3561 Country Court North, Mobile, AL 36619-5335
Editor	Cemil Betanov 153 Claudy Lane, New Hyde Park, NY 11040
Club	Nancy B. Clark
Member-at-Large	P. O. Box 427, Marstons Mills, MA 02648-0427
Club	Edward A. Kennedy
Member-at-Large	19 Ranier Road, Effort, PA 18330-8829
Advertising Director	Edward A. Kennedy 19 Ranier Road, Effort, PA 18330-8829

jerome.kasper@gmail.com

WYStamps@gmail.com

dhhunt@ptdprolog.net Phone: (717) 445-9420

dhhunt@ptdprolog.net Phone: (717) 445-9420

cwousecg@aol.com Phone: (251) 607-9253

CemilB@optonline.net Phone: (516) 849-6604

nbc@cape.com Phone: (508) 428-9132

moek78@msn.com Phone: (570) 620-2011

moek78@msn.com Phone: (570) 620-2011

EFOCC Member Post Submission Form

Every EFOCC member is entitled to three free 35 word listings per year in the EFOCC Member Post. To use your free listing, please complete this form, and mail it to the Editor. If you wish, you can also e-mail your request to the Editor.

Help With Members' New Projects Submission Form

If you would like a free listing in The EFO Collector to help you with a new EFO project, please complete this form and mail it to the Editor. If you wish, you can also e-mail your request to the Editor.

I am looking for

Name, address, e-mail:

■ Exhibiting EFOCC Members ■

■ SESCOAL 2012, October 5-7, 2012, Los Angeles, CA

■ **Jerome V. V. Kasper**, *Aerogrammes of Ethiopia*, Vermeil, United Postal Stationery Society Marcus White Award.

■ **Jerome V. V. Kasper**, *United States Aerogrammes*, Vermeil.

■ **Alfredo Frohlich**, *SCADTA Airmail Stamps for SCADTA Airmail Service in Ecuador*, Single Frame – Gold.

■ OKPEX 2012, October 19-20, 2012, Oklahoma City, OK

■ **Andrew McFarlane**, *First Days of the 1929 George Rogers Clark Commemorative*, Grand & Gold, American First Day Cover Society Certificate.

■ **Hideo Yokota**, *U.S. Airmail Special Delivery Issues of 1934-1936*, Gold, American Philatelic Society 1940-1980 Medal of Excellence, United States Stamp Society Statue of Freedom Award.

■ CHICAGOPEX 2012, November 16-18, 2012, Itasca, IL

■ **Eliot A. Landau**, *Classic France: Postal History of the Cérès and Napoleon Issues of 1849-1875*, Gold.

■ **Michael F. Birrer & Lawrence Fillion**, *Handbook of Malaria Philately*, Literature- Vermeil.

■ **Wayne Youngblood**, *Airpost Journal*, Literature= Periodicals – Vermeil.

■ VAPEX 2012, November 16-18, 2012, Williamsburg, VA

■ **Hideo Yokota**, *U.S. Airmail Special Delivery Issues of 1934-1936*, Gold, American Philatelic Society 1900-1940 Medal of Excellence.

■ **John Hotchner**, *Perforating the sheet stamps of the Third Bureau Issue*, Gold, J. Douglas Church Award, Error, Freaks and Oddities Collectors' Club award.

■ **Thomas P. Myers**, *British Airmail to the Americas*, Gold, AAPE Award of Excellence (Title Page). APS Research Medal.

■ **Thomas P. Myers**, *Riches of Colombia Airmails, 1932 to 1941 – A Postal History*, Gold, Admiral Jesse B. Johnson Award, American Air Mail Society Award.

■ **Eliot A. Landau**, *The 1890-1903 4¢ Lincoln Definitives*, Vermeil.

■ **Eliot A. Landau**, *The 5¢ China War Resistance Issue of 1942: Its Proof, Issue, First Day Covers and Postal Uses*, Vermeil, American First Day Cover Society award.

■ **John Hotchner**, *"Hubba Bubba" Hand Stamps*, Single Frame, Gold, AAPE Creativity in Philatelic Exhibiting award.

■ **Thomas P. Myers**, *The 1916 Overprints of Peru*, Single Frame, Gold, AAPE Gold Award of Honor.

■ Southeastern Stamp Show 2013, January 25-27, 2013, Norcross, GA

■ **Eliot A. Landau**, *Oh, Freedom*, Court of Honor Prix d'Honneur.

■ **Charles J. O'Brien, III**, *Sesquicentennial Exposition 1926*, Court of Honor Prix d'Honneur.

■ **Charles J. O'Brien III**, *Ohio Sesquicentennial*, Gold, American Philatelic Society 1940-1980 Medal of Excellence.

■ **Hideo Yokota**, *U.S. Airmail Special Delivery Issues of 1934-1936*, Gold, AAPE Award of Excellence – Title Page, United States Stamp Society Statue of Freedom Award.

■ **Doug & Nancy Clark**, *A Trip in the Mail Car*, Vermeil, AAPE Gold Award of Honor.

■ *Congratulations to our Exhibitor Members!* ■

Editor's Note: Many thanks to Hideo Yokota for periodically supplying me with the palmares' of exhibits.

.....

EFOCC Member Post

I have over 1,000 singles and plate blocks/strips with misperfs, color shifts, imperfs, etc., for sale. Tell me what you are looking for. Stan Goldfarb, 8520 Atwell Road, Potomac, Maryland 20854, golfar1@ix.netcom.com, (301)279-0754.

Do not forget to bid in the EFOCC Auction!

The most efficient way to feed your EFO habit...

EFOCC Website

Your Editor and Webmaster both recommend that you visit the EFOCC website (<http://www.efocc.org>). They both work together to post new material. In December, we completed posting a series of EFO-related articles by John Hotchner, which appeared in Linn's from 1978 through 1986. The EFOs of that period are still EFOs, so there is lots of good information. The main page of the site lists new additions!

ATTENTION:

WHEN THE TIME COMES TO SELL, YOU DESERVE OUR COMPLETE ATTENTION



*These are just a few of the many auction catalogs
we have created for our important consignors*

These catalogues take time and they require attention—attention to the careful lotting of your collection, thorough research and thoughtful descriptions.

The staff at Matthew Bennett International is committed to giving you our complete time and attention so that you get the results you deserve—a lasting legacy for your labors and maximum realizations for your stamps and covers.

To find out how to get the most attention for your consignment, please contact us at (410) 647-1002.



MATTHEW BENNETT INTERNATIONAL

8096 Edwin Raynor Blvd, Suite B • Baltimore, MD 21122

info@bennettstamps.com • www.bennettstamps.com

(410) 647-1002

Genuine Rarities... Or Clever Counterfeits?



The Philatelic Foundation Knows.

The experts at The Philatelic Foundation identified the perforations on this 1985 “D” stamp pair (Scott #2111b) as counterfeit. If they had been authentic, the market price would be hundreds of dollars more.

The truth is – most collectors lack the knowledge and confidence to make that determination. You don’t have to know the answer to difficult questions like this because the team of experts at the Philatelic Foundation does. Backed by a multimillion-dollar reference collection and a staff of professional experts, a Philatelic Foundation Certificate is the standard of excellence for our hobby. And at your direction the PF offers numerical grading too.

Now – Faster Service

Call 1-212-221-6555 or visit www.PhilatelicFoundation.org today to download a submission form for single or multiple items. Fill out the one-page form and send it to us with your stamps or covers. Request Priority or Express Service and your stamp or cover will be returned in 20 business days or less.

Reward yourself with the security of a Philatelic Foundation Certificate – the “gold standard” of philatelic certificates for over 60 years.



The Philatelic Foundation

70 West 40th Street, 15th Floor
New York, NY 10018
(212) 221-6555
www.PhilatelicFoundation.org

An Interesting Auction

David Hunt, Bob Dumaine and Cemil Betanov

On January 27th, 2013, Dave Hunt e-mailed your Editor with an observation about a stamp being auctioned by Sam Houston Philatelics, Inc. The description for lot 393 was:

1039var, 6¢ Theodore Roosevelt, UL cnr sgl, "wild perfs" wrong both ways, no gum, eye-catching! Estimate: \$25

The auction was scheduled to close on January 30th.

Dave, a lover of EFOs and bargains, had bid right away \$20. A few days later, the bid price was at \$450, at which time he e-mailed Cemil to express his frustration, along with another sentiment: "Personally, I think that whoever cut the stamp square was a vandal. It would have been more impressive as a plate block - and might almost have been worth the \$450!!"

Cemil became now curious, as well. Dave saw the beginnings of a good story for The EFO Collector...

Dave has a sharp memory, and remembered a few people who might have been interested in this stamp. A few e-mails yielded no admission from anybody that they might be a bidder (yes, you might recognize that you were addressed by Dave with an e-mail...). Dave's discussed this via e-mail with Member Stan Goldfarb, who came up with the tagline: **A consignor's dream and a collector's nightmare...**

We kept imagining where the bidding might go... By the time the auction closed on January 30th, the sale price (before commission and expenses) was \$525! Against the auctioneer's estimate of \$25... And we had no idea who the bidders were.

So, since we were so unsuccessful with our little detective adventure, we decided to address the auctioneer, Sam Houston Philatelics, Inc. Rita Dumaine was good enough to e-mail me a nice scan, which you see nearby. Later, after some more badgering, Bob Dumaine, EFOCC Life Member, sent us following story:

"I got the stamp in an EFO lot from a major auction company about 4-6 months ago... I didn't think too much about it, and wrote it up for our January 2013 auction, Lot #393.

Description: "1039 var Theodore Roosevelt, UL cnr sgl, wild perfs, wrong both ways, no gum, eye-catching! Est. \$25."

The first bid we received was \$20... the second bid a few days later was \$2,200 as I recall... Since we did not have an underbid for the \$2,200 bid, it remained at a low open until several days before the auction closed. Another bidder called, and bid \$300 or so... which would have been high, except for the \$2,200 bid! That bidder re-bid a higher amount, and a day or so later, again another increased bid, still under \$400 or so...

We received several other bids from different bidders, but all were under \$50, probably because of my low estimate of \$25...

I began to feel as if someone was playing a game... it happens sometimes and auctioneers must stay alert to such. I also notified the bidder of my suspicions... The bidder told me to increase their \$2,200 to over \$3,000!! The second bidder began jumping bids in \$25 increments via the Internet... Then stopped at \$500...



The lot sold for one increment higher, at \$525 to the original bidder whose book bid now exceeded \$3,000!!

As an auctioneer, I loved the action, but knew I blew the lot writeup; and I'm not yet aware "why" the misperfed, no gum Roosevelt stamp was so intently sought after by several EFO collectors!!

Perhaps you or your readers can share some light on the hidden value of this Freak and it's fascination to EFO collectors??

Sincerely,

Bob Dumaine"

A few days later, Bob provided another insight: *"The Roosevelt freak was purchased by a "Roosevelt Specialist" whose collection extends far beyond stamps.....although I have no idea of its scope.....*

Perhaps one day we'll see it in the Smithsonian!!"

So, here you have the story, EFOers! Thanks to Bob for a fun story!

A few questions remain open, can you answer them?

- Why was this stamp so sought after?
- If you were one of the bidders, are you willing to come forward and tell us your side of the story?
- If you are the buyer, can you tell us your side of the story?
- Do you have recollections of bidding in similar circumstances, i.e. bid at an "I want this at any price" level? Or bidding against such a bidder? ☼

*Please drop your Editor an e-mail if you are
interested in receiving The EFO Collector as a
PDF only.*

*Be sure to bid in Auction 130
Which closes on
March 31st 2013.*

GREAT BRITAIN 1973 CHRISTMAS ISSUE



SALMON-PINK SHIFTED
RIGHT 5MM



SALMON-PINK FACES
OMITTED



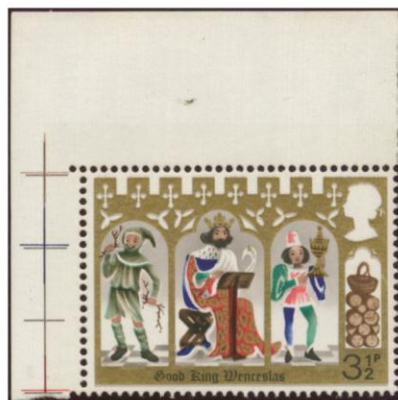
NORMAL



GREY-BLACK VALUE,
FACIAL DETAILS, ETC
OMITTED



IMPERFORATE



ROSY-RED PAGE'S CLOTHES
OMITTED



BRIGHT-RED KING'S
ROBE OMITTED



GREEN SHIFT



GREEN/BROWN SHIFT



BLUE LEG AND ROBE
OMITTED



ROSY-MAUVE SHIFTED RIGHT



PAGES FACE

continued on page 12

Letters to the Editor Continued from page 3

hard copy or an electronic copy. Cemil, would you be able to create a PDF file for each issue? And email it to the members who opt in? Or we could drop the file into a secure area of our website where only members with a login could get to it.

I want to be clear about doing electronic copies. I belong to the Precancel Stamp Society (PSS). A few years ago, they forced the entire membership to move to an emailed copy of their magazine. If you want a hard copy, you pay \$15/year for it. In my opinion, it is absolutely killing that club and PSS is losing a lot of members. It's a long story. Anyway, if EFOCC does this, getting a copy over email should be an option to help save the club money. It should not be mandatory. I think having 10% of the members agreeing to receive an electronic copy is a realistic figure.

I hope this has been helpful.

Scott Shaulis
Murrysville, PA

The question of using stamps and envelopes was raised in this issue. I assume the club buys discount postage. I will volunteer to do the affixing and mailing of so desired... Happy New Year and thank you for your service to the EFOCC...

Ed Silver
Medford, NJ

David sent me some details about how the printer puts together the EFO Collector. That got me thinking.

Is the current 11x17 folded "booklet" format preferred by the members? Would there be any advantage of going to just 8.5x11 pages and stapling the upper left corner?

My thought is that the 8.5x11 pages may be cheaper/easier for the printer to produce? Also, with the way the larger pages are arranged, it puts more of a burden on Cemil to put color pages into a "unit" to get the lower cost on the pages that can be all black & white.

I know the folded booklet format is more professional looking. But do the members insist on this format or would another format be just as acceptable.

Could we check with Wayne Menuz (e-mail: upssed@pacbell.net) at the United Postal Stationery Society to see who prints Postal Stationery for them? The format of their magazine is color and similar booklet layout to the EFO Collector. Maybe they know of a cheaper printer?

Thoughts?

Scott Shaulis
Murrysville, PA

I received my EFO Collector today and wanted to respond to your request for input from members on the costs of mailing.

As I never see anything in the auction in my collecting area of re-entries (double transfers), I am in no hurry to receive my EFO Collector anyway, so I am in favour of the absolute cheapest and most convenient way for you folks to handle the mailing...bulk mail with no stamps is fine by me. My envelopes

usually go into the shredder anyway, so neither stamps nor envelopes matter to me.

Oh, and Cemil also mentions that using envelopes pays for itself with advertising on the back. My present envelope is blank on the back and I honestly do not recall EVER seeing advertising on the back of them over the years. Different for Canada?

As for Mr. Krieger's letter about changing the name of the club, I wouldn't think it would be wise after all these years. While I have never been fond of the term 'freaks' myself, I have learned to accept it over the years, even though I have never felt that the name encompasses my area of specialty of re-entries or double transfers. I always thought a more suitable name would be something like, "Errors, Constant & Non-Constant Varieties Collectors Club." But then, EFOCC has a much smoother ring to it than ECNCVCC! ;)

Just my 2 cents.

Ralph Trimble
Ontario, Canada

Editor's note: *There is no advertising on the envelope. However, if we did not use envelopes, we would need to dedicate an external page for the recipient's address. An ad on the external page carries a price premium. In addition, if we shifted the external ad into the interior, we would lose a page of content.*

We are, unfortunately, in a bit of a bind with the journal, as we fall into that purgatory where we have enough members to make it necessary to do a press run, but not enough to make it financially practical.

Scott's suggestion regarding size of sheet is worth looking into. However, I know of virtually no printers who still make a price differentiation for B&W vs. color signatures.

My own thinking is that we'd save far more if hard copies go only to those who specifically request them, with the rest of us receiving PDF files. We could even offer a slight discount for PDF only if we wished.

Wayne Youngblood
St. Louis, MO

Thanks to David for the early warning. I see several issues here that we need to deal with.

First, we need to push membership/recruiting much harder. I will do my part in Linn's, USSN, and ASDC, but given lead times, that will take a while. Wayne, can you use your column in the AP please to give this a shove also? I will be happy to take copies of the EFOC to shows. I will be at Louisville, Sandical and St. Louis in the near future. I am thinking we also need to be presenting programs at shows and participating in shows too. Even small ones. If agreeable, I can get the Charlotte show (Charpex) to feature us, and I will put in a court of honor exhibit featuring EFOs. They will give us meeting room space, and I will do a program. We will need to give this publicity to the members in the EFOC, and do a press release for the media, both of which I will take care of.

Second, I think our biggest draw is the auction, and that should be front and center in our publicity. The second biggest draw is the wonderful website that Cemil has spent countless hours constructing. Some of that, by the way, is amenable to being sold in CD form, both to members and to others. We used to have a brochure on the club that Jim had done. While it would cost a bit to update and print another 1000 copies, I think it would be worthwhile to do so, as taking a few copies of EFOC to shows will not get to very many people.

Third, I have recently run a solicitation to AAPE life members which has drawn so far about a 15% response and over \$1000. We have lost the end-of-the-year tax benefit angle, but it would still be worth doing. Happy to share my materials with Jerry, Wayne and/or Dave as this needs to come from the senior executive.

Fourth, yes we need to raise dues to at least \$20, possibly more.

Fifth, yes, we need to offer the EFOC as an electronic downloadable replacement for hard copy. No discounts though as 1. There is a benefit in speed of receipt by getting it this way, and can be done so that the magazine is all in color, and 2. We are not going to save any money in the short term because we have to mail 200 copies anyway. However as membership grows, we might, and in the short term we have more hard copies to use at shows. Such use requires that membership info and a blank be in each issue. By the way, the Mourning Stamps and Covers Club does the electronic journal as an option, and saves a bunch of postage as something over a third of the members have opted for it (no discount).

Sixth, we need to push harder on selling ad space to members.

Seventh, no one has mentioned doing EFOC with fewer pages. I would not really want to see that happen, but it is a possibility, and ought to be dangled to the membership as the consequence of not recruiting additional members, which ALL should be asked to do.

Eighth, I am hoping that ATA coverage of EFOCC which is pending for the next issue of their journal will get us some members. Cemil has spearheaded that effort, and I expect it will pay off.

John Hotchner
Falls Church, VA

Editor's Note: *Actually, I was contacted by the ATA, so I do not want to take credit for that. I merely coordinated our response.*

Agree with all points John has raised. John, if you have current copies of a brochure on EFOC I can get them from Louisville to both the Atlanta show and make them available at the Spellman Museum.

And I agree, thanks to David for the early warning.

Nancy Clark
Marstons Mills, MA

Your Editor's 2¢

I would like to thank all for your feedback. We have, of course, to avoid our "fiscal cliff." The goal of this write-up is to summarize what has been collectively proposed, explain what your Board is currently doing, what will work and what is unlikely to work. I will also recommend further action items. Consider this discussion material and, please, do provide feedback.

Mailing The EFO Collector in an Envelope

There is general agreement that this is a good thing, because it protects the copy, so we will continue to use envelopes.

Using Stamps when Mailing

Several writers either did not care or indicated the price is too high for the benefit. Hence, while recognizing that it is nice to get mail with stamps, we will not consider this as a decision criterion. Of course, we may decide to continue using stamps, if we decide that first class is better than bulk mail for reasons discussed below.

Allow Electronic Distribution as PDFs

Several Members have indicated preference for this approach. Currently, The EFO Collector is produced as a PDF, so it can be made available on our website. There is some work that needs to occur to do this, but I will work on making this happen within the next 3-4 months. The newer issues (say after 2005) will be available to all active Members on the website using a login. Members who opt for electronic delivery will also receive an e-mail when the new issue is ready. This will be 1-2 weeks before the issue is delivered in the mail. Please send an e-mail to me if you are interested in this. I have a list of Members who have indicated a preference in the past for this. The expectation is that, over the long term, there will be other online content only available to Members.

There is no intention at this point to cease delivery of printed copies.

Note that this may not save for domestic recipients, if we use bulk mail. This is because we have to send at least 200 copies when using bulk mail.

Printing Format – Letter Size or Folded 11x17

I personally feel that folded 11x17 looks nicer, but we should look at the price differential of using letter-size paper stapled at the upper left. This is an open issue.

Action point:

i. Determine cost differential when using 8.5x11 instead 11x17.

Growing the Size of the EFOCC Membership

This is a non-brainer. How to realize it is not as clear. I have taken 50-60 copies of the EFOC to many shows and dropped them at a table at the entrance. Each copy had an application form stapled to page 3. In some cases, the application form indicated that there was a discount for becoming a member within, say, two weeks following the show. I have also noticed that they were mostly gone at the end of the day. I have never become aware of even receiving a single application through this approach. I think this is likely to work only if there is some

personal interaction, for example, at a Club meeting where the EFOCC is somehow pitched.

In my estimation, currently the largest draw to the EFOCC is the website. I periodically receive queries through the website, and a good percentage of those become members.

We do have a Club brochure. Please contact your Editor if you wish to receive a copy by e-mail or by snail mail.

- Still there are some action items here:
- ii. Revise the Club brochure.
 - iii. Run a solicitation drive for donations from Life Members.
 - iv. I will work with Nancy Clark, as per her offer, to make sample copies (with application forms) available at the Spellman Museum.
 - v. Look at other ways to advertise.

Dues, Life Memberships

- Action items here:
- vi. Determine whether to raise dues and determine new level of dues.
 - vii. Determine whether to continue offering Life Memberships, and if yes, what the price should be.

Mailing Costs

Here, general opinion was that it is better to have use the cheapest mailing option. We have two options: Mailing via first class or bulk mail. Bulk mail has some limitations: It is only for domestic mailing. The minimum number of copies mailed at one time is 200. Since we currently mail somewhat less, we would need to mail some of our spare copies to quality for that rate. Furthermore, we need a permit. Our current printer will “borrow” a permit to do the mailing, but another printer may not have one.

Printing Costs

Here, our Treasurer, Dave Hunt has done some excellent work. One of his discoveries is a printer in Pennsylvania who proposes to print a copy of The EFO Collector for about \$3.30. Our current printer (North Florida Printing Co., Inc. - NFPCi) charges about \$4.50 per copy. Please note that envelope and shipping (e.g. sending remaining copies to my home) costs are

additional. We would save money as a result of lower printing costs as well as by printing fewer copies.

On the other hand, NFPCi has access to a bulk mail permit, and we do not know whether the printer in Pennsylvania does. As I write this, we are still evaluating.

The action item for this item is:
viii. Select the printer to use after considering cost, access to bulk mail permit and, last not least, printing quality. ☺

Results of Auction 127 (closed June 30, 2012)

Note: Results of Auction 128 are on page 26.

1	nb	2	\$20	3	\$15	4	nb
5	nb	6	nb	7	\$25	8	\$16
9	nb	10	\$47	11	nb	12	nb
13	nb	14	\$35	15	nb	16	\$31
17	nb	18	nb	19	\$23	20	\$40
21	\$10	22	nb	23	\$6	24	\$15
25	\$27	26	\$11	27	nb	28	\$18
29	\$25	30	\$35	31	nb	32	\$28
33	nb	34	\$25	35	nb	36	\$10
37	\$45	38	nb	39	\$10	40	\$10
41	\$20	42	nb	43	nb	44	\$150
45	nb	46	nb	47	nb	48	nb
49	nb	50	nb	51	nb	52	nb
53	nb	54	nb	55	nb	56	\$18
57	nb	58	\$20	59	nb	60	nb
61	nb	62	nb	63	nb	64	\$8
65	\$15	66	nb	67	nb	68	nb
69	nb	70	nb	71	nb	72	\$10
73	\$15	74	nb	75	nb	76	nb
77	nb	78	nb	79	\$35	80	\$15
81	nb	82	nb	83	\$30	84	nb
85	nb	86	nb	87	nb	88	nb
89	nb	90	nb	91	nb	92	\$16
93	nb	94	nb	95	nb	96	\$10
97	\$9	98	nb	99	nb	100	\$25
101	nb	102	nb	103	nb	104	\$15
105	nb	106	\$22	107	nb	108	nb
109	\$5	110	\$30	111	\$28	112	\$14
113	nb	114	nb	115	\$25	116	nb
117	\$25	118	\$18	119	nb	120	nb
121	nb						

Members, please note: Unsold lots from Auction 127 are available for sale on a first come-first served basis for \$1 over the reserve price with no buyer’s commission and no

Continued from page 9

- In the top strip of stamps, the center stamp shows normal pink floor tiles.
- In the second strip, the center stamp shows a dry print for the pink tiles.
- In the third strip (digitally cropped from an FDC), the center stamp of the shows a very dry print of the pink floor tiles.



1925 Provisional Surcharge EFOs

Bill Lehr, with assistance from Joe Pryluck & Thomas Galloway

Errors

Surcharge(s) must be on or at least touching stamp impression to be a Scott-listed error.

Type 8, Black Ink

- Double surcharge
Die 111, size 16, WM 15, white, NSL



- Die 127, size 10, WMs 25 & 27,
size 13, WM 24,
size 13, WM 25, no gum,
size 23, WM 25, regular & window,
size 23, WM 27, white; Scott U495d

All of these appear to be Chicago city types.

Die 129, size 8, WM 41, white;

Philadelphia city type; Scott U495e



- Die 130, sizes 10 & 13 window, WM 22,
size 23, WM 22, white; Scott U495f
- Die 129, size 10, WM 25, blue; NSL
- Die 130, size 10, WM 22, blue;
San Francisco city type; NSL
- Die 130, size 10, WM 24, blue, no left bars on one; NSL
- Die 127, size 10, wove, brown (unglazed);
Philadelphia city type; NSL
- Die 132, size 10, WM 27, white; Scott U505b
- Die 138, size 10, WM 22, buff;
Philadelphia city type; Scott U503a

- Double surcharge, one inverted
Die 138 on buff; Scott U503b
- Triple surcharge
Die 127, size 10, WM 25, white; NSL

Table 3: Catalogued Type 8 surcharge errors

Scott #	UPSS #	Description
U490 var	3090a	Double surcharge
U495d	3121a-25	Double surcharge
	3121a-27	Double surcharge
U495 var	3121b	Triple surcharge
U495d	3122a	Double surcharge

	3122c	Double surcharge
	3125a-25	Double surcharge
	3125a-27	Double surcharge
	3126a	Double surcharge
U495f	3128a	Double surcharge
U495e	3136a	Double surcharge
	3138a	Double surcharge
U495e	3139a	Double surcharge
U498b var	3157a	Double surcharge
U498 var	3159a-22	Double surcharge
	3159a-24	Double surcharge; no left bars on one
U500 var	3165a	Double surcharge
U505b	3168 var	Double surcharge
U503a	3179 var	Double surcharge
	3179 var	Double surcharge; one inverted

Type 9, Black Ink



- Inverted surcharge
Die 127, sizes 13, WMs 24 & 25,
size 23, WM 25, white; Scott U515e
Die 129, size 10, WMs 25 & 27, white; Scott U515i
Die 130, size 10, WM 25, white; Scott U515l
- Double surcharge
Die 106, size 13, WM 11, amber; NSL
Die 111, size 13, WM 15, buff; NSL
Die 127, sizes 10 & 23, WMs 27 & 29,
size 13, WM 24,
size 13, WM 25, no gum,
size 23, WM 25, window, white; Scott U515d
Die 129, size 10, WMs 22, 24, 25, 27,
size 13, WM 25, white; Scott U515h
Die 130, size 10, WM 24, white; Scott U515k
Die 130, size 13, WM 19, buff; NSL



- Die 127, size 10, WM 24,
size 23, WM 25, blue; Scott U518c
Die 134, size 23, WM 24, white; NSL
Die 127, size 10, manila; Scott U519a

- Double surcharge, one inverted
Die 127, size 10, WM 25,
size 13, WM 24, white; Scott U515g
Original find from Council Bluffs, Iowa.
Additional copy known from Passaic, NJ
- Triple surcharge
Die 111, size 13, WM 15, blue, one far left, white; NSL
Die 127, size 10, WM 25,
size 23, WMs 22 & 27, white; Scott U515f
Die 129, size 13, WM 25, white; Scott U515j
- Quadruple surcharge
Die 127, size 10, WM 25, white; NSL
Die 129, size 13, WM 25, white; NSL

Type 9, Magenta Ink

- Double surcharge
Die 129, size 13, WM 25, white; Scott U521a

Table 4: Catalogued Type 9 surcharge errors

Scott #	UPSS #	Description
U509a	3187a	Double surcharge
U510e		Double surcharge
U512 var	3200a	Double surcharge
U513 var	3203a	Triple surcharge; one far left
U515d	3211a	Double surcharge
U515f	3211b	Triple surcharge
U515 var	3211c	Quadruple surcharge
U515g	3211d	Double surcharge; one inverted
U515d	3213a-24	Double surcharge
	3213a-25	Double surcharge
U515e	3213b-24	Inverted surcharge
	3213b-25	Inverted surcharge
	3213c	Double surcharge; one inverted
U515d	3214a-24	Double surcharge
	3214a-25	Double surcharge
U515e	3214b	Inverted surcharge
U515f	3215c	Triple surcharge
U515h	3218a-22	Double surcharge
	3218a-24	Double surcharge
	3218a-225	Double surcharge
	3218a-27	Double surcharge
U515i	3218b-25	Inverted surcharge
	3218b-27	Inverted surcharge
U515h	3220a	Double surcharge
U515j	3220b	Triple surcharge
U515b var	3220c	Quadruple surcharge
U521a	3223a	Double surcharge
	3225a	Double surcharge
U515k	3226a	Double surcharge
U515l	3226b	Inverted surcharge
U517a var	3232a	Double surcharge
U518c	3233a	Double surcharge
	3236a	Double surcharge
U519a	3244a	Double surcharge
U520 var	3249a	Double surcharge
	3253a	Inverted surcharge

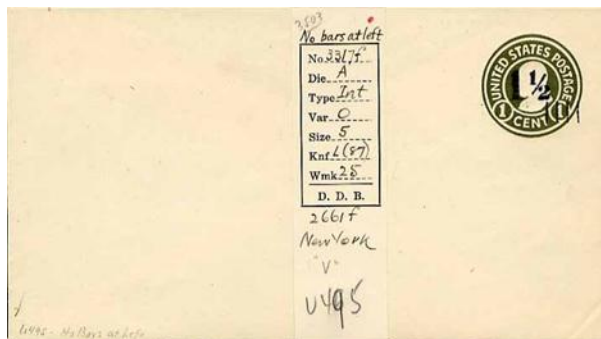


Type 8 Partial Surcharge

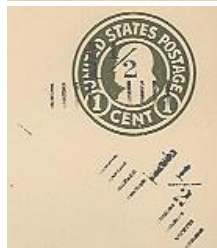
Freaks

A wide variety of 1925 surcharge freaks exist, just like the 1920 surcharge freaks.

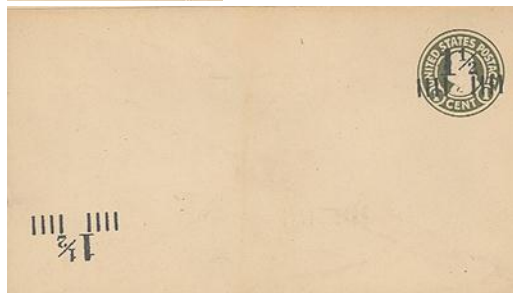
Type 8



- Partial surcharge
Some of these have achieved catalog listing status in Thorp-Bartels.
Die 130, size 23, WM 22, white, no bars at left;
TB 3535b-22
Die 130, size 13, WM 25, blue, no bars at left;
TB 3532b-25



- Double surcharge, one normal, one shifted (top and left)



- Double surcharge, one normal, one inverted lower left.

- Double surcharge, one normal, one on reverse.



U495 albino shown

- Normal surcharge on albino

(continued on page 17)

PerfOrations: Collecting Printer's Waste – Unethical or a Concession to Reality?

John M. Hotchner

P.O. Box 1125, Falls Church, VA 22041, jmhstamp@verizon.net

Recent correspondence with a collector friend raised the matter of the desirability of including *printer's waste* (PW) in an EFO collection. Given that PW has a somewhat shady reputation, it is a fair question – and one each of us must answer for ourselves.

To arrive at an answer, we must first do some definitions, to be able to differentiate production errors and varieties from PW. Production errors make it through the production process, are imperfect for one of many reasons, should have been caught (by human or machine-based inspection) and destroyed, but are later sold at face value among properly completed stock via a postal outlet. (A footnote is needed here as upon occasion a postal person will know enough to identify such material as unusual and though it is both illegal and unethical to do so, will pay face value, and then retail such material to the collector community. Because it was paid for at face and found among completed work, these varieties do not bear the scarlet PW letters.)

In a sense all imperfect production is PW but as a philatelic term of art the label is applied to imperfect or incomplete material that has not made it all the way through production, but is removed either in the printing establishment (often as waste), or later during waste destruction, or taken from the printer's archives, and later offered in philatelic fora (commercial auctions, or through dealers), and sometimes directly to collectors. Taking the material is sometimes portrayed by the seller as making a lucky find, but in fact it is theft, and often a violation of the "finder's" terms of employment.

Stephen Datz, in his Catalogue of Errors on U.S. Postage Stamps defines Printer's Waste as follows:

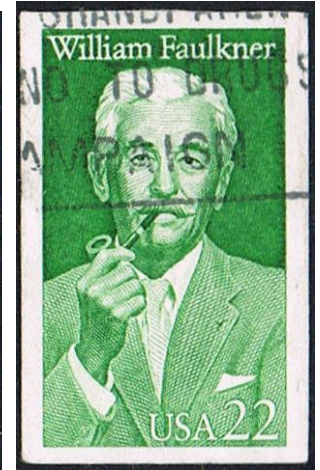
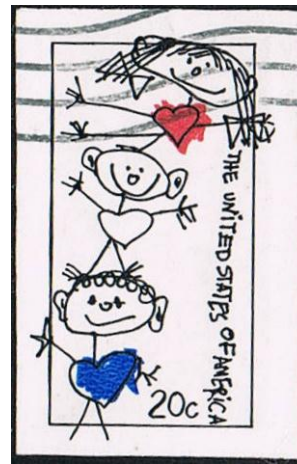
"Printer's waste refers to error-like items that have reached the market through the back door rather than across a post office counter. An error sold across the counter is deemed legitimate. Printer's waste is not. The term "printer's waste" implies that it was misappropriated from a printing plant or wastepaper destruction facility and illicitly sold into the hobby. The term invariably carries a negative connotation. Most collectors do not consider printer's waste to be errors – and rightly so, because they are not."

Just to muddy the waters a little, I do not agree with the last sentence. Often, what has been identified as waste is precisely errors in production – imperfs, missing colors, etc., that has been identified as such and must be destroyed. I suppose this is another term-of-art issue: When is an error an error!

Indeed it is often not difficult to tell errors from waste based on the form of the item and its quality and quantity.

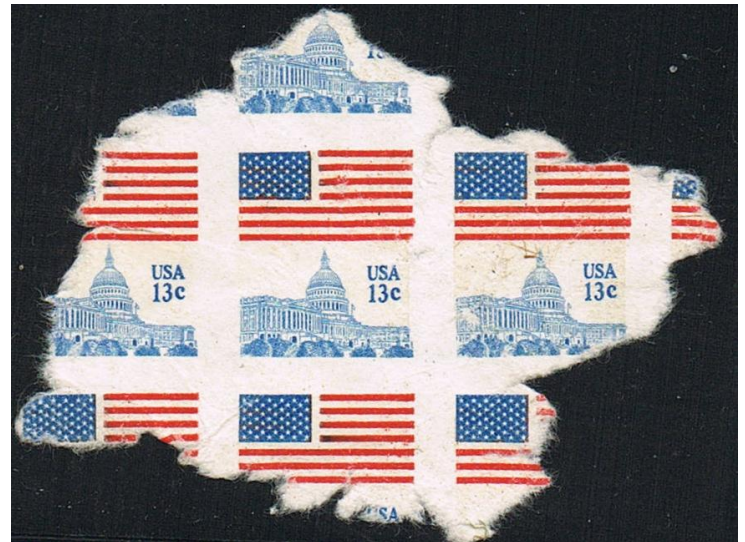
Errors tend to be pristine (except for the error itself) while PW often has fingerprints on the gum, tears, scrunches and other evidence of rough handling. Errors tend to be in complete formats as purchased – a full sheet/pane, a booklet, a complete roll of coils. PW is often partial, or in a form that is impossible for a final product. Errors tend to be noticed and the cause

fixed by security printers before large quantities are produced. Thus they are usually found in small quantities, while PW tends to appear in bunches; often long after issue.



Let's look at some examples; some of which illustrate the variables of the problem and illustrate the difficulties of identifying PW. First are the two imperf used single commemoratives from 1984 and 1987 shown in the figure above. Both were produced by the Bureau of Engraving and Printing. Neither is known fully imperf as errors purchased in mint panes. In the case of Family Unity only one is known to me. In the case of Faulkner, there are two.

All are used. It is possible that imperf panes were produced, sold to the public, and cut apart and used on mail. But chances are other panes would have gotten out, and the lack of any such reports is troubling. In addition, Faulkner is missing its tagging, indicating that it had not made it through the production process. I have been told that a waste paper firm had the contract to haul away and destroy incomplete and defective waste. However, employees of the firm found printed waste they thought could be sold as errors or for use as postage. They were caught, and most of the waste was recovered, but obviously not all.



Another bit of PW that escaped courtesy of a waste paper company is the imperf chunk of 13¢ Flag-Over-Capital stamps shown at the lower right of the previous page. No legitimate imperf material is known for this issue. This piece is from an 832-subject sheet prepared in booklet format. It has parts of two, maybe three panes. It has both colors and proper tagging. At this time waste material was partially destroyed at the Bureau, then carried away to another site to be burned. This piece, and a few others, were picked up in the street outside the Bureau; having fallen out of a dumpster.



In the case of the 1979 15¢ John Paul Jones material shown above, imperf pairs/gutter pairs/blocks from this issue are not errors or, according to Scott, American Bank Note Co. printer's waste. Rather it is classed as proofs released when ABNCo. sold its archives. As such it gets listings in Scott (See 1789Pa.-g.). Perforated gutter pairs and blocks are not mentioned in Scott or Datz, but I have always understood them to be PW. Aside from the fact that there is a significant quantity of this material around, they certainly they were never released and sold over a counter in that form.

Something that Datz does mention as PW, quantity unknown, is the imperf 10¢ Collective Bargaining block of 10¢ shown here in Figure 4. While I have no literature to confirm this, I have to believe that Datz had definitive proof, which the worldwide margin would tend to confirm. Clearly this block did not make it through the entire production process, or that excess margin would have been trimmed off.

The \$9.95 Express Mail imperf pair shown in Figure 5 is also ABNCo. PW. It is extremely rare that an error would be missing two major facets of production as is the case here: both perforations, and the engraved black. This marks it as PW, and it is so recognized in Datz.



Finally, take a look at the odd impressions on the Bureau-produced 4th Bureau Issue blocks below. Prior to 1930, the Bureau used a waste paper dealer to haul away the waste accumulated in production. These blurred impressions from the process of cleaning the presses resulted when paper was run through to absorb the residue of ink and cleaning substance. Blurred impressions of the 1¢ (perforated only), 1½¢, 2¢, 4¢, 5¢, 6¢, and 8¢ (all imperf) of the 1922 flat plate printing began appearing on the philatelic market sometime after 1930.



Alerted by the obviously smudged appearance, Secret Service agents found and confiscated those in the stocks of the dealer who bought the material from the waste paper dealer, but others had been dispersed. As these were not ever intended to be postage stamps, it is not proper to call them PW, but they are certainly collectible as a first cousin. Over the past 30 years I have been able to find in blocks all but the 4¢.

The Scott Specialized U.S. Catalogue is a guide to what is what, as they list errors and also proof material which can easily be mistaken for errors or waste. Datz includes a section on PW and identifies most of the known examples of PW suffering from missing colors, lack of perforations, and inverts.

Now we can move on to the question of whether it is desirable to include PW in a collection. Clearly Datz, quoted

above, editorializes against collecting it. Collecting such material is thought to legitimize it, and the purist finds that more than a little distasteful. Others believe that doing so will have the long term effect of encouraging theft.

In theory that may be true, but I find it more difficult to connect something issued 40 or more years ago to a present threat. In fact, it is the most recent PW material that is likely to have pariah status. The older an item is, the more it is likely to be accepted as a legitimate collectible.

From my perspective, all PW is good in that it reveals printing process and is another collecting dimension BUT one must be careful as it does not get catalog recognition and should be bought as waste and not as errors – generally for less money. I can't tell you what to do, and would not want to; only to explain the issues and tell you what I have concluded. Now, it is your call! ☺

If you have a question, or a possible topic for John to cover in a future issue, please write to him at P.O. Box 1125, Falls Church, VA 22041-0125, or e-mail him at jmhstamp@verizon.net.

Secretary's Report

Jim McDevitt

cwouscg@aol.com

New Members

Jeff Poeschi	1444	Raul Hernandez	1445
2398 Ball Drive		8503 Cottage Street	
Richfield, WI 53076-9515		Vienna, VA 22180-7036	

A warm welcome to our new Members!

New Life Member

Kenneth Hunter	LM0042
3561 Country Court North	
Mobile, AL 36619	

A warm welcome to Kenneth and many thanks for your confidence in the EFOCC!

Returning Member

Kenneth J. Moreau	1037
402 Coronation Drive	
Franklin, MA 02038-2842	

We are glad to have you back! ☺

Treasurer's Report

David Hunt

dhhunt@ptdprolog.net

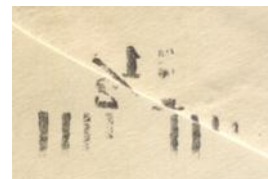
Report for the Quarter July 1 – September 30, 2012

Beginning balance:	\$3445.45
Income	
Dues	\$115.00
Donation	15.00
Expenses	
Printing costs	(\$914.29)
Postage costs	(256.65)
Ending balance:	\$2404.51

Respectfully submitted,
David H. Hunt, Treasurer ☺

EFOs of the 1925... (continued from p. 14)

- Normal surcharge, normal position on a reverse folded envelope.
- Normal surcharge, normal position on a miscut envelope.
- No surcharge on stamp, surcharge inverted in lower left corner.

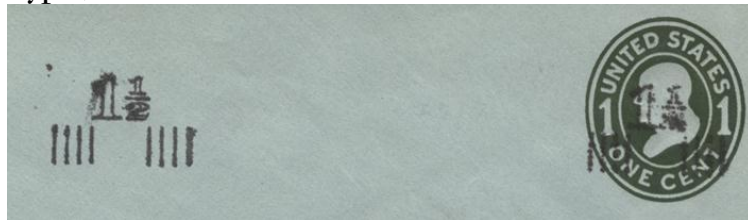


- Shifted from the normal position, usually to the left, but shifts in other directions are also known; also known in diagonal positions (top left)
- Setoff: Ink transfer from being stacked on top of another envelope while the ink is still wet (top right).

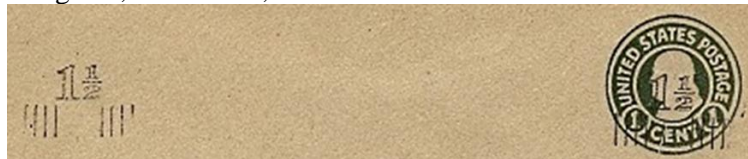
Table 5: Catalogued Type 8 surcharge freaks

Scott #	UPSS #	Description
U495 var	3138b	Surcharge with no bars at left
	3139b	Surcharge with no bars at left
U497b var	3148a	Surcharge with no bars at left

Type 9



- Double surcharge, one normal, one shifted left, on 1¢ green, Mercantile, on blue.



- Double surcharge, one normal, one shifted far left, on 1¢ green, circular die, on white (toned).



- Surcharge shifted to the left (top left).
- Surcharge shifted to the left (top right).



- Surcharged at an angle, reading down, below stamp
- Partial surcharge, large 1 and left bars missing, cropped from 3211-25/Scott U515. ☺

EFOCC Auction Rules for Consignors

Preparing Lots

Please use a blank form from a recent copy of the EFO Collector. Photocopies are fine. Please use a separate form for each lot.

Secure each lot to the front of the form; attach large lots to the reverse side. Protect all items with mounts, glassine, etc., and stiffeners, if necessary, but **be sure** item/items can be easily removed by Auction Director for examination and/or photographing. Do not use staples. Attach each item so that the description can be easily read. A simple and easy way to mount lots is to do so on dealer sales cards, or in glassines mounted face down for easy removal.

Include a reserve (minimum bid) or write "none". Lots may be revised to accurately describe items; or returned if necessary. Your name and EFOCC number must be on the consignment form, however, to preserve anonymity, these are removed from the consignment sheet before sending item to successful bidders.

Send consignments to David Hunt, 45 Fairway Drive, Denver, PA 17517. Use **insured** or **registered** U. S. Mail.

Consignor Fees

Consignor commission is 10% of the hammer price, with a minimum bid of 50 cents per lot.

Unsold lots incur a 50 cent fee per lot, and the consignor pays return postage and insurance.

Expenses and printing constraints make it impractical to picture every lot, especially those which are large in size. The EFOCC will exercise discretion in picturing lots.

Consignor Special Instructions

To save postage and labor, EFOCC can automatically re-submit unsold lots with lower minimums in a future auction, **if you instruct EFOCC clearly what to do**.

If you send duplicate or very similar lots, it is consignor's responsibility to state clearly if you would like to have these placed in different sales. Generally, EFOCC places all items received in the same sale to minimize paperwork.

Consignment/Payment Timing

EFOCC receives consignments continually and prepares them for subsequent sales, roughly on a first-in/first-out basis. However, large lots may be spread over several auctions.

After the close of each sale, unsold lots are offered to bidders on a first come-first served basis for \$1 over the reserve with no buyer's commission or postage. This increases total sales, makes more bidders happy, and sells more lots for consignors, all for very little additional effort.

EFOCC needs approximately one month after auction's closing date to determine successful bidders, prepare and mail invoices, mail lots, receive payment from winners, list after sale lots and accept their offers, etc., etc. Thus, consignors can expect to receive payment about four to six weeks after an auction closes.

Lot #	Catalog	EFOCC Auction #130 – Lot Descriptions	Cat Val	Minimum
1	2114	22¢ Flag with offset on back and oil from printing press on front. Through the wonders of technology both front and back are shown NH		\$15.00
2	518	\$1 Franklin with offset on back. Used.		\$15.00
3	1625a	13¢ Flag imperf pair NH	\$20.00	\$9.00
4	1519a	10¢ Flag imperf coil pair NH	\$35.00	\$20.00
5	1896a	20¢ Flag triple offset on back, front normal NH		\$20.00
6	1357	6¢ Daniel Boone, yellow shift left extends beyond brown about 1mm NH		\$7.00
7	1542	10¢ Kentucky light green shift or smear NH		\$15.00
8	1290b	25¢ Fred. Douglass magenta shade variety NH		\$20.00
9	1895	20¢ Flag misperfed plate #3 strip of five NH		\$15.00
10	1402a	8¢ Eisenhower imperf joint line pair. There are what appear to be dispensing machine marks on gum side NH	\$70.00	\$21.00
11	3629F	37¢ Flag vertical perfs come down from top and up from bottom, do not quite match at center. NH		\$20.00
12	1617b	10¢ Petition imperf coil pair NH	\$60.00	\$25.00
13	1800b	15¢ Santa missina green. yellow. and tan colors. Other colors misalined as always NH	\$400.00	\$250.00
14	1744	13¢ Harriet Tubman missing most of yellow color NG		\$24.00
15	1897A	2¢ Locomotive coil pair slightly misperfed and miscut NH		\$4.00
16	1501	8¢ Electronics black engraved color shifted down NH		\$11.00
17	1585	4¢ Literacy two-way misperf NH		\$13.00
18	C84	11¢ National Parks blue color shift NH		\$13.00
19	1690a	13¢ Franklin light blue omitted NH		\$85.00
20	2280	25¢ Flag strip of four, center line of perfs appears imperf, but there are some very light pin impressions NH		\$45.00
21	1615f	8.4¢ Piano precanceled gap strip of four imperf NH		\$30.00
22	2279a	E stamp imperf pair NH		\$35.00
23	1305C	\$1 O'Neill coil change of legend misperf dull gum NH		\$25.00
24	1704	13¢ Washington plate single misperf 7mm to right NH but light gum disturbance		\$12.00
25	1908	20¢ Fire Pumper coil. Plate #13 strip of 5, misperf 8mm to left NH		\$25.00
26	2015	20¢ Libraries misperf block of four NH		\$9.00
27	1549	10¢ Retarded Children misperf block of four NH		\$9.00

EFOCC Auction Rules for Bidders

How to Bid

Please bid on a consignment form from a recent EFO Collector. A photocopy is fine. Include your EFOCC membership number. For new bidders and non-EFOCC members, please include your APS membership number. Sign your bid sheet to acknowledge acceptance of the EFOCC auction rules; unsigned forms can not be accepted. Submit bids to David Hunt, 17 Fairway Drive, Denver, PA 17517, e-mail to dhhunt@ptdprolog.net.

Bidding Precautions

Minimum bids are not estimates, but are true reserves established by the consignors. Bids below the listed reserve will not be accepted.

Bidders are responsible for inaccurate bids. Bids do not have to be typed, but, please, be sure numbers and amounts are clearly legible. Confirm phone and e-mail bids with a written bid sheet.

Auction Bid Increments

Please use the following increments when bidding and/or assigning reserves to consignments. Lots are sold to the highest bidder at one advance over the second highest bid.

EFOCC reduces non-conforming bids to the next lower increment. For example, a bid of \$39.50 will be entered as \$39.00.

Special Bidding Instructions

As the EFOCC auction is a small auction, special instructions can not be easily accommodated. EFOCC can not accept "BUY" bids, nor "INCREASE BY..." bids. **Please, make your final, best, and highest bid and you will get the lot at the lowest price available.**

Bidders' Payments

A 10% buyer's premium is added to the hammer price of each lot. Buyers pay postage, plus insurance on lots valued at over \$10.00.

Payment is due upon receipt of invoice. If you will be out of town for a while just after an auction closes, or are moving to your summer home about that time, please let EFOCC know at the time you place your bids.

Returning Lots

Within five (5) days of receipt of awarded lots, you may return any lot which is not described correctly provided such lot is still in its original condition. If an expertizing certificate is a condition of bidding, please inform EFOCC of this before auction closes.

One Final Request

Please **bid generously on donation lots** whose monies go entirely to the benefit of the EFOCC.

28	999	3¢ Nevada misperf block of four NH		\$36.00
29	1294	\$1 O'Neill misperf block of four NH		\$18.00
30	C92a	31¢ Wright Bros. Pair color shift NH		\$55.00
31	1945a	20¢ Cactus misperf block of four NH		\$32.00
32	1855	13¢ Crazy Horse misperf block of four NH		\$14.00
33	2141a	22¢ Decoys misperf block of four NH		\$36.00
34	1338f	8¢ Flag misperf block of four NH		\$14.00
35	1520b	10¢ Jefferson Memorial imperf coil pair NH. A recent dealer's list had one for \$27.		\$18.00
36	1197	4¢ Louisiana misperf block of four NH		\$18.00
37	1894	20¢ Flag misperf block of four NH		\$15.00
38	2004	20¢ Library of Congress misperf margin pair NH		\$14.00
39	1158	4¢ US-Japan misperf single NH		\$11.00
40	2041	20¢ Brooklyn Bridge misperf single NH		\$11.00
41	2412	25¢ House of Representatives gold color shift NH		\$27.00
42	2103	20¢ Hispanic Americans misperf single NH		\$20.00
43	1616	9¢ Capitol coil lion strip of six with miscut showing partial plate nos. 36924-36925 NH		\$18.00
44	1338	6¢ Flag vert pair - horiz. Perfs shifted putting flag at bottom of stamps NH		\$15.00
45	807	3¢ Jefferson horiz pair, horiz perfs shifted up 8mm LH		\$30.00
46	2913a	32¢ Flag 30% misperf plate #44444 strip of six. Light bend affect pl. no. stamp NH		\$23.00
47	842	3¢ Jefferson, three miscut horiz. Coil pairs with 10-30% of pl. nos. 22288, 22285 and 21909 LH		\$15.00
48	1281	3¢ Parkman two different misperfs vert and horiz - inconsequential gum disturbance - NH		\$20.00
49	1393D	7¢ Franklin two-way misperf NH		\$20.00
50	1617	10¢ Petition misperfed coil lion strip of six NH		\$30.00
51	1446	8¢ Lanier two-way misperf NH		\$30.00
52	1299b	1¢ Jefferson imperf coil line pair. Note that the two stamps are misaligned. NH	\$55.00	\$40.00
53	1299b	1¢ Jefferson imperf coil pair. NH	\$25.00	\$15.00
54	1299	1¢ Jefferson misperf coil pair NH		\$10.00
55	683	2¢ South Carolina misperf. Couple of gum skips NH		\$25.00
56	1068	3¢ New Hampshire misperf pair NH		\$9.00
57	1455	8¢ Family Planning pair with shift of black lettering NH		\$14.00
58	2011	20¢ Aging design vert pair with change misperf, horiz perfs shifted down 6mm NH		\$20.00
59	1551	10¢ Christmas Sleighride misperf vert pair NH		\$6.00
60	1759	15¢ Missions to Mars UR block of six misperfed and miscut with complete interpane margin.		\$75.00
61	807	3¢ Jefferson side margin block of 4, misperfed vertically. NH		\$20.00
62	1759	15¢ Missions to Mars block of 4 with horiz perfs shifted up NH		\$9.00
63	807	3¢ Jefferson block with foldunder prior to cutting into post office panes, gives an almost		\$65.00
64	813	8¢ Van Buren with two-way misperf NH		\$14.00
65	807	3¢ Jefferson bottom margin block of four misperfed horiz NH		\$20.00
66	1393	6¢ Eisenhower block of four with design change vert misperf NH		\$20.00
67	1035e	3¢ Liberty margin block with vert perfs shifted NH		\$20.00
68	1891var	18¢ Flag coil pair, imperf to perf NH		\$35.00
69	1042	8¢ Liberty LR block with paper fold, miscut with piece of adjoining pane. Small adhesions on		\$15.00
70	1704	13¢ Washington at Trenton misperfed ZIP block NH		\$13.00
71	1297	3¢ Parkman misperfed line strip of three NH		\$23.00
72	2117-21	22¢ Seashells full booklet with both panes having "A" and second "2" of "22" partially missing		\$30.00
73	1393	6¢ Eisenhower top margin vert pair with horiz perfs shifted up 4mm causing design change - top stamp without "Eisenhower USA" NH		\$20.00
74	807a	3¢ Jefferson booklet pane cut 6mm left showing part of marginal bars NH		\$35.00
75	807a	3¢ Jefferson booklet pane miscut 7mm to left NH		\$25.00
76	C78a	Booklet BKC22 with three miscut panes: 11¢ 32964 UL 90%; 11¢ 32965 UL 85%; 2¢ 32996 UL 70%. NH		\$20.00
77	807a	3¢ Jefferson - a rarity - horiz misperfs of both panes in full 12-stamp bkt. Top pane 8.5mm		\$150.00
78	807	3¢ Jefferson block of ten, light "dry" print affects 8 stamps. NH		\$20.00
79	2170	3¢ White block with very heavy and visible tagging - curls paper. NH		\$7.50
80	2283a	25¢ Pheasant (light red in sky) miscut booklet with two panes. NH		\$25.00
81	O136	22¢ Official pair with dull finish gum. Comes with cert and normal pair. NH	\$150.00	\$95.00
82	1436	8¢ Dickenson color shift NH		\$10.00
83	1298	6¢ FDR miscut line strip of 4 showing part of EE bars. Pulled perf on right stamp. NH		\$50.00
84	1725	13¢ Alta, CA black color shift NH		\$35.00
85	C87	18¢ Liberty Airmail, misperf pair NH		\$17.00
86	C90	31¢ Airmail very nice complete offset on reverse NH		\$60.00
87	1608	50¢ Lamp orange flame misplaced NH		\$18.00
88	1612	\$2 Lamp orange flame misplaced NH		\$25.00
89		Collection of 12 diff imperf coil pairs. All VF except 1059A which is fine as always NH. Contains 1059Ad, 1617b dull gum, 1618b, 1618cd, 1625a, 1891a, 1895d, 1897Ac, 2115f, 2133b, 2265a and 2280c.		\$150.00
90	3837	60¢ Love misperf down about 2mm NH		\$7.00
91	909	5¢ Polish flag, two stamps with vignette shifts up and down NH		\$15.00
92	2089	20¢ Jim Thorpe misperf NH		\$25.00
93	2250	22¢ Caruso misperf with gutter NH		\$7.50
94	1058	4¢ Lincoln misperfed coil line strip of five NH		\$45.00
95	1059A	25¢ Revere coil line pair with part plate nos. NH		\$7.50
96	702	2¢ Red Cross red shift, hinge remnant		\$6.00
97	1304	5¢ Washington misperfed line strip of three NH		\$30.00

98	1304	5¢ Washington misperfed line pair with part plate nos. NH	\$5.00
99	1229	5¢ Washington misperf pair NH	\$10.00
100	1305E	15¢ O. W. Holmes misperfed line strip of five, Type 1, shiny gum. NH	\$40.00
101	1305E	15¢ O. W. Holmes misperfed line strip of three, Type 1, dry gum. A bit of offset on back NH	\$23.00
102	1208	5¢ Flag misperf pair NH	\$7.00
103	1476	8¢ Printing press two-way misperf showing gutter and a bit of the stamp from pane on the	\$25.00
104	2031	20¢ Science black color shift NH	\$30.00
105	1294	\$1 O'Neill change of legend misperf NH	\$25.00
106	651	2¢ Clark vignette shift up and left. Some short perfs top right, NG	\$3.00
107	651	2¢ Clark vignette shift left. Missing a bit of gum on lower left side otherwise NH. Some short	\$15.00
108	836	3¢ Swedes and Finns misperf. Missing some gum and thinned at UL, but not hinged	\$25.00
109	999	3¢ Nevada misperfed marginal single NH	\$25.00
110	1577a	10¢ Banking and Commerce pair with multiple color shift NH	\$25.00
111	1577a	10¢ Banking and Commerce pair with multiple color shift (a bit less than previous lot) NH	\$15.00
112	2351a	22¢ Lacemaking block with white shifted up into the bottom legend of the stamp above NH	\$60.00
113	1928a	18¢ Architedure block with change of design misperf NH	\$55.00
114	1757	13¢ CAPEX souvenir sheet with great misperf NH	\$150.00
115	1276	5¢ Christmas Angel change of design misperf NH	\$15.00
116	1950	20¢ FDR misperf single NH	\$13.00
117	E17	13¢ Special Delivery plate no. single with plate smear on left NH	\$4.00
118	2618	29¢ Love misperf from UL sheet corner NH	\$25.00
119	1509	10¢ Flag plate strip of 20 with red shift NH	\$7.50
120	U639	32¢ Space hologram, hologram is shifted up 18mm, leaving a blank gutter instead of image for about 40% of the opening.	\$50.00
121	1689w	31¢ Washington at Valley Forge Souvenir Sheet "USA 31¢" missing on a, b, c and d due to perf shift NH	\$400.00
122	901	3¢ Defense block of 12 with foldover results in extra stamps and a nearly complete gutter pair in bottom row. NH	\$100.00
123	1546	10¢ Bicentennial sheet of 50 with foldover resulting in extra paper in the plate block corner.	\$100.00



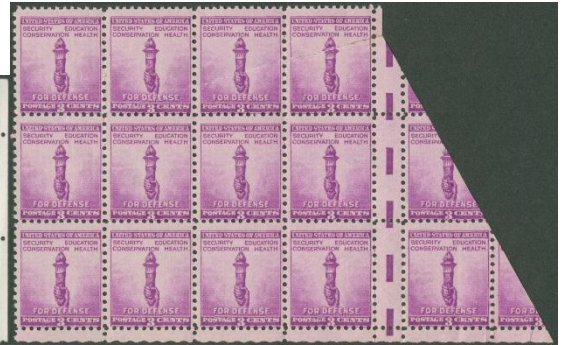


Auction 130 closes on March 31st, 2013
New large auction pictures in color at <http://www.efocc.org>

Auction 130 closes on March 31st, 2013 View large auction pictures in color at <http://www.efocc.org>







THE SIGN FX GROUP, INC.
ARCHITECTURAL SIGNAGE
136 MARION DRIVE
WEST ORANGE NJ 07052-3305

USA
32



Top left: Lot 119
Top right: Lot 122
Left: Lot 120
Bottom: Lot 121



Washington Reviewing His Ragged Army at Valley Forge
From a Painting by William T.rego



EFOCC Auction Consignment Form

EFOCC use – only ⇔ AUCTION #:

LOT #:

Consignor: _____ Address: _____ _____ Telephone: (____) - _____ Email/Fax: _____ EFOCC Membership No: _____ APS Membership No: _____	Country (if not U.S.): _____ Catalog No. _____ _____ Catalog Value: _____ _____	Condition (circle): NH LH HH HR NG USED Please check if this is a donation lot: <input type="checkbox"/> Please note Minimum Bid: \$ _____
--	---	--

Description of item: {Please note any faults and fasten lots below this line or on the reverse side}

Instructions: Fill in all information. Attach each lot to the front of one form, using a stock card, face-down glassine or other mount. Use separate rigid sheet for larger lots and attach a completed form. No staples - please. Make sure it is easy for us to remove and re-insert each lot.



Send consignment form(s) with lot(s) to: David Hunt, 45 Fairway Drive, Denver, PA 17517
For you protection, we recommend that you send lot(s) by registered or insured mail.



EFOCC Auction Bid Sheet

Name: _____ EFOCC #: _____ *New Bidders.....APS Membership appreciated: _____*
 Address: _____ Phone: (____) _____ *Please limit my purchases to:*
 City: _____ State: _____ Zip: _____ \$ _____

Please execute the following bids for me in EFOCC Auction # _____

{Signature - all bid sheets must be signed}

{Date}

Earliest postmark wins tie bids!!

Lot#	Bid	Lot#	Bid	Lot#	Bid	Lot#	Bid	Lot#	Bid	Lot#	Bid

Postage will be charged to the bidder. A 10% buyer's premium will be added to successful bids.
 Mail bid sheets to: David Hunt, 45 Fairway Drive, Denver, PA 17517 or email to: dhhunt@ptdprolog.net



EFOCC Auction 128 Realizations (Closed September 30th, 2012)

Lot	Hammer	Lot	Hammer	Lot	Hammer	Lot	Hammer	Lot	Hammer	Lot	Hammer	Lot	Hammer	Lot	Hammer
1	nb	2	nb	3	\$41	4	\$9	5	\$18	6	\$10	7	nb	8	nb
9	nb	10	\$25	11	\$15	12	nb	13	nb	14	nb	15	\$25	16	\$5
17	nb	18	\$15	19	\$15	20	nb	21	\$10	22	nb	23	\$125	24	\$23
25	nb	26	nb	27	\$15	28	\$9	29	\$100	30	nb	31	\$20	32	nb
33	nb	34	\$35	35	nb	36	\$12	37	nb	38	nb	39	\$32	40	\$20
41	\$25	42	nb	43	\$23	44	\$50	45	nb	46	nb	47	\$8.50	48	\$23
49	\$13	50	\$10	51	\$9	52	\$6.50	53	nb	54	nb	55	\$11	56	nb
57	\$20	58	\$12	59	\$7	60	nb	61	\$6	62	nb	63	nb	64	nb
65	nb	66	\$15	67	\$40	68	\$6	69	\$22	70	nb	71	nb	72	\$13
73	\$11	74	\$14	75	nb	76	\$60	77	\$15	78	\$15	79	\$12	80	nb
81	\$15	82	nb	83	nb	84	nb	85	\$50	86	\$50	87	\$22	88	nb
89	nb	90	nb	91	\$50	92	nb	93	nb	94	nb	95	\$13	96	\$15
97	nb	98	\$10	99	\$105	100	\$11	101	nb	102	\$15	103	nb	104	nb
105	nb	106	\$12	107	\$15	108	\$9	109	\$52.50	110	nb	111	\$13	112	nb
113	nb	114	nb												

Members, please note: Unsold lots from Auction 128 are available for sale on a first come-first served basis for \$1 over the reserve price with no buyer's commission and no postage. Please contact the Auction Director for purchasing these lots.

For over 60 years...



American philately's #1 dealer in major errors.



Now also your source
for investment grade
U.S. classics.

Jack Nalbandian, Inc.

Post Office Box 71
East Greenwich RI 02818
Toll Free: (877) 742-6168
Phone: (401) 885-5020
nalbandianj@earthlink.net

www.nalbandstamp.com

LOOKING FOR STAMPS A CUT ABOVE THE REST?

Regency-Superior offers seven auctions per year featuring hundreds of unique Errors, Freaks & Oddities from USA and around the World.

**For a complimentary auction
catalog, call us toll free:**

800-782-0066

or visit our website at
www.Regency-Superior.com

***Consignments accepted year-round.
Call today!***



Your Source for Buying, Selling & Consigning Errors, Freaks & Oddities

STAMPS • COINS • SPACE • AUTOGRAPHS

REGENCY SUPERIOR

Saint Louis, Missouri
229 N. Euclid Avenue
Saint Louis, MO 63108

Los Angeles, California
17514 Ventura Blvd., Suite 101
Encino, CA 91316

EXPERIENCED
AUCTIONEERS
**SINCE
1929**

