

A Publication of the
EFO Collectors' Club
APS Affiliate #103
ATA Chapter #94

www.efocc.org

The EFO Collector



July - September 2011 Volume XL No. 1 Whole Number 164 ISSN 1099-7377

Yugoslav Errors in the EFOCC Auction



Inside This Issue

Dave Hunt: Auction Highlights	3	From Your Editor	3
Exhibiting EFOCC Members	5	EFOCC Member Post	5
Joseph Monteiro: New Zealand Errors - Part 2	7	Secretary's Report	17
Cemil Betanov: EFOCC Website	10	Treasurer's Report	17
David Nye: 1992 Columbus Varieties Part 2	12	David Hunt Presents Auction 125	18
Bill Lehr: EFOs Of The Washington/Franklin Circular Dies	13		
John Hotchner's Perforations: We Have a Resource! Let's Use It!	16		



To Err is Human, To Find is Divine



Upside down or grounded, Siegel sells them best.



Robert A. Siegel

AUCTION GALLERIES, INC.

For information about our auctions or to request a copy of the next sale catalogue and newsletter, please contact:
Robert A. Siegel Auction Galleries, Inc., 60 East 56th Street, 4th Floor, New York, N.Y. 10022
Phone (212) 753-6421 Fax (212) 753-6429 E-mail: stamps@siegelauctions.com

For on-line catalogues, prices realized and the Siegel Encyclopedia

www.siegelauctions.com

From Your Editor

I had to smile when I received my Linn's issue dated November 28, 2011. On the cover was Stan Goldfarb's 1976 Yorktown souvenir sheet that was also on the cover of our last issue. This is probably the first time that *The EFO Collector* has beaten Linn's to the punch! Of course, we do not try to and cannot compete with Linn's on who comes out quicker with the latest EFO discovery. Nevertheless, there is some satisfaction in being first, and I would like to thank Stan for giving us the opportunity.

Something similar may happen soon again. David Nye, who is a dealer doing business under the name "Mr. Columbus", spent a lot of time looking at the 1992 Columbus souvenir sheets, and many imperfections. He presented some of his findings in the last and current issue of *The EFO Collector*. He submitted related material to Linn's and I hope that Linn's will soon publish an articles on his findings.

EFOCC Leadership Change

I would like to inform you of a change in the leadership of the EFOCC. Our Secretary, Stan Raugh asked to be relieved of his duties. You see, Stan retired some time ago, and is finding out that, in retirement, he is busier than ever. The same happened to another good friend of mine, and now I am thinking that I never want to retire.

At any rate, Jim McDevitt, who has saved the EFOCC several times before, stepped in and offered to help. He has now, after being appointed by EFOCC President Jerry Kasper, taken over the Secretary's duties. In the current issue, Stan will present his last "Secretary's Report." We are grateful to Stan for all his contributions. Stan indicates that he will, of course, continue to support the EFOCC, and remains a Life Member.

Another Change

There was another, so far unannounced, change in day-to-day EFOCC operations. After the resignation of Don Price from his positions, Edward Kennedy stepped forward to provide assistance with advertiser relations. He has been very effectively filling that job, which has been a true godsend to me, and I would like to thank Ed for his assistance.

Elections

We are late with our election cycle. We expect that Jerry will announce a slate of candidate in the next issue, currently scheduled to be mailed in early January 2012.

Best Wishes

This is the last issue to be mailed before the 2011 Holiday Season. I wish you and your loved ones a happy and healthy Holiday Season and the best for 2012. Thank you for supporting the EFOCC and *The EFO Collector*. As to me, my wish is that each of you can convince one philatelic friend to become an EFOCC Member!



Cemil ☺

Auction Highlights

David Hunt

New EFOCC member Miloje Chastven has generously donated some EFOs of Yugoslavia stamps to the club. (Thanks, Miloje) They appear as lots 1 through 10A. Because I am not familiar with Yugoslav EFOs, I asked Miloje, who is a dealer in Yugoslav and Balkan stamps, to provide some background. When these stamps were printed during the Communist period in Yugoslavia, it was a bad career move for a printing plant employee to be found responsible for printing defects, especially when it affected President Tito's portrait! Whether these EFOs were accidental or made intentionally by order of some bigwig, a few may have been smuggled out of the warehouse for favored persons or for profit. After the breakup of Yugoslavia perhaps more of this material was obtained from warehouses by corrupt officials. Nevertheless, Miloje says these errors are uncommon. He has been dealing Balkan stamps for 25 years and believes there are probably 10 to 50 examples of the color variety and color omitted stamps existing. The stamp with the mark on Tito's forehead is perhaps a bit more common, and lots 8 and 9 are the most common with perhaps several hundred existing. The mini-sheet of Tito with the broken 0 may be the least common, as Miloje says he is only aware of 3 copies. Miloje's websites are

- <http://stampmusthave.blogspot.com>
- <http://picasaweb.google.com/balkanstamp>

I would imagine that US dealer stocks of Yugoslavia EFOs are rather limited, so here is your chance to obtain some unusual items. Remember, they are donations so the club keeps all the money bid for them. Bid generously.

On the US side of the auction we have lot 33, the 6¢ Eisenhower commemorative missing the blue "US 6¢ Postage" legend, and so by Scott formula is considered to have 'blue omitted'. This particular stamp is the one shown to the Scott editors that led to the creation of the listing in the catalog.

Lot 82 is a nice misperfed plate number block of the 13¢ Lafayette stamp. I think it is particularly interesting to be able to collect EFOs of sheet stamps as plate blocks and I am disappointed when I see evidence that plate blocks have been broken into singles, although I understand the economic rationale.

Lots 89-93 are a nice selection of misperfs of several of the 8¢ Champions of Liberty stamps (I wonder where the 4¢ misperfs are?). I do not remember having had similar lots in the auction over the last few years.

Auction 124 features some nice imperf coil pairs; e.g. lots 15, 16 and 18, which exist in quantities of 500, 250 and 100 pairs respectively. Where else can you find such rarity for a modest price but the EFOCC auction? By the way, according to Datz, all imperf examples of the 16.7¢ coil are miscut.

You don't often see EFOs on Official Mail stamps, but we have an imperf block of four of the 23¢ (lot 28). Lot 33 is a 10mm misperf on the 1984 Alaska Statehood stamp. I particularly like misperfs such as this that show a lot of blank paper. It makes the error more obvious, I think.

(continued on page 10)

ALL CONTENTS COPYRIGHTED © 2011 BY THE EFO COLLECTORS' CLUB.

Authors and contributors have express permission to reuse of their material elsewhere. Except for material reprinted herein, or material individually copyrighted by the author, material herein may be reprinted elsewhere as long as full credit is given to The EFO Collector, citing the issue date and number and giving the address of the EFOCC Secretary. ♦ The EFO Collector is published quarterly, in March, June, September and December. The submission deadline for any issue is the 15th of the month preceding the issue, e.g. 2/15, 6/15, 8/15 and 11/15. Send or e-mail editorial material directly to the Editor. Sample copies of The EFO Collector are available for \$3 from the Secretary. ♦ Membership includes subscription to The EFO Collector. Membership fees are as follows:

	Members with addresses in the U.S. or Canada	Members with addresses elsewhere
One year's dues	\$17.00	\$34.00
One year membership renewal	\$17.00	\$34.00
Two year membership renewal	\$32.00*	\$64.00*
Life membership	\$300.00†	\$450.00

Please make membership renewal checks to "EFOCC" and mail to Treasurer. Charges can be paid via PayPal, subject to a \$1 convenience fee, e-mail Editor for details. [*] Each additional year prepaid at the same time is \$15/\$30. [†] \$240 for those older than 65.

Advertising Rates

	Per Issue	Contract 4 Issues
Full page in color	\$100.00	\$328.00
Half page in color	\$80.00	\$280.00
Quarter page in color	\$65.00	\$244.00
Cover location in color	\$125.00	\$400.00
2 page center spread in color	\$150.00	\$450.00

Single insertion advertisements and from those who are not APS Members must be fully prepaid. Four-issue contract rate advertisers will be invoiced in full upon publication of their first ad. 20% discount for black & white advertising, The deadline for ad copy is the 15th of the month preceding the issue. General advertisement inquiries should be directed to the Advertising Director at ddprice98@hotmail.com. Advertisement copy related inquiries should be directed to the Editor. Ad payments should be directed to Treasurer. Please make checks payable to "EFOCC".

EFOCC Officers (2008-2010)

President	Jerome V. V. Kasper P. O. Box 3470, Clovis, CA 93613-3470
Vice-President	Wayne Youngblood
Auction Director	David Hunt 45 Fairway Drive, Denver, PA 17517
Treasurer	David Hunt 45 Fairway Drive, Denver, PA 17517
Secretary	Stan Raugh 4217 8 th Avenue, Temple, PA 19560
Editor	Cemil Betanov 153 Claudy Lane, New Hyde Park, NY 11040
Club Member-at-Large	Nancy B. Clark P. O. Box 427, Marstons Mills, MA 02648-0427
Club Member-at-Large	Edward A. Kennedy 19 Ranier Road, Effort, PA 18330-8829
Advertising Director	open

jerome.kasper@gmail.com

WYStamps@gmail.com

dhhunt@ptdprolog.net Phone: (717) 445-9420

dhhunt@ptdprolog.net Phone: (717) 445-9420

rare.plantsman@verizon.net Phone: (610) 921-5717

CemilB@optonline.net Phone: (516) 849-6604

nbc@cape.com Phone: (508) 428-9132

moek78@msn.com Phone: (570) 620-2011

EFOCC Member Post Submission Form

Every EFOCC member is entitled to three free 35 word listings per year in the EFOCC Member Post. To use your free listing, please complete this form, and mail it to the Editor. If you wish, you can also e-mail your request to the Editor.

Help With Members' New Projects Submission Form

If you would like a free listing in The EFO Collector to help you with a new EFO project, please complete this form and mail it to the Editor. If you wish, you can also e-mail your request to the Editor.

I am looking for

Name, address, e-mail:

Exhibiting EFOCC Members

Americover 2011, August 5-7, 2011, Indianapolis, IN

Charles J. O'Brien, III., *New York World's Fair 1939*, Gold.

Douglas N. & Nancy B. Clark, *The U.S. Revalued Postal Stationery of 1971*, Silver.

Omaha Stamp Show 2011, September 10-11, 2011, Omaha, NE

Hideo Yokota, *U.S. Airmail Special Delivery Issues of 1934-1936*, Reserve Grand and Gold, American Philatelic Society 1900-1940 Medal of Excellence, United States Stamp Society Statue of Freedom Award.

Eliot A. Landau, *The 1890-1903 4 Cent Lincoln Definitives*, Vermeil.

Eliot A. Landau, *First Day Covers of the 3-Cent Lincoln Fourth Bureau Issues*, Single Frame, Vermeil.

INDYPEX 2011, September 30-October 2, 2011, Indianapolis, IN

Eliot A. Landau, *Classic France: Postal History of the Ceres and Napoleon Issues of 1849-1875*, Gold, American Philatelic Society Pre-1900 Medal of Excellence.

OKPEX 2011, October 21-22, 2011, Oklahoma City, OK

Eliot A. Landau, *The 1890-1903 4 Cent Lincoln Definitives*, Gold, United States Stamp Society Statue of Freedom Award.

Alfredo Frohlich, *United States of Colombia*, Gold, American Association of Philatelic Exhibitors Award for Best Title Page, Additional Consideration for Grand and Reserve Grand Award.

Eliot A. Landau, *The 1909 Lincoln Commemorative Issue: Early Uses and First Day Covers*, Single Frame, Gold.

Congratulations to our Exhibitor Members!

EFOCC Member Post

I have over 1,000 singles and plate blocks/strips with misperfs, color shifts, imperfs, etc., for sale. Tell me what you are looking for. Stan Goldfarb, 8520 Atwell Road, Potomac, Maryland 20854, golfar1@ix.netcom.com, (301)279-0754.

WANTED: Anything unusual (off or on cover) for Washington Irving (Scott 859), Sleepy Hollow (Scott 1548), Davy Crockett (Scott 1330) or Christmas '81 Teddy Bear (Scott 1940). Gary Denis, P.O. Box 766, Patuxent River, MD 20670, garycdenis@comcast.net.

WANTED: EFOs, unusual usages, destinations, rare FDCs: 1196 (Seattle World's Fair), 1244 or U546 (N.Y. World's Fair), 1340 (Hemisfair), C70 (Alaska Purchase Centennial). Ron Klimley, 2807 West San Rafael Street, Tampa, FL 33629-6135; klimley@verizon.net.

WANTED: Imperforate copies of Scott 1039, 6¢ Roosevelt Liberty Series, and/or information about whereabouts of such copies. Lenz, PO Box 296, Sterling Hts, MI 48311; joann@stampsjoann.net; (586) 675-7303.

WANTED: EFOs, unusual usages and "exotic" destinations of Scott 1039/1039a, 6¢ Roosevelt Liberty Series and uncommon usages of UC33, 7¢ Blue Jet stationery. Lenz, PO Box 296, Sterling Hts, MI 48311; joann@stampsjoann.net; (586) 675-7303.

WANTED: Dead Letter penalty envelopes with original contents. Lenz, PO Box 296, Sterling Hts, MI 48311; joann@stampsjoann.net; (586) 675-7303

WANTED: Anything unusual (on or off paper, used or mint) for the 1967 Space Twins (Scotts 1331-32), Phillip E. Nazak, 626 Buntin Mill Rd, Cottontown, TN 37048. nazakfamily@aol.com. ☛

From the June 1983 Issue, which can be found online at www.efocc.org:

A Page From My Album
by John M. Hotchner

"SMALL POX" COIL

Found only on the 1932 Washington coil, the "Small Pox" variety is an offset from the top feeding roller of the vertical perforating apparatus. Note the series of diamond-shaped markings arranged in staggered vertical rows of nine, across the face of the stamp. It is probable that fewer than 1,000 stamps showing the variety were produced. 118 copies have been reported.



The diamonds are most visible in the forehead and left-hand margin

The surface of the top roller was cross hatched with fine grooves running around the cylinder at an angle of about 33 degrees. This covered the surface with a diamond marking that provided tension so as to keep the paper from sagging.

Normally, the roller did not pick up ink from the printed surface, but early in 1934, the Bureau had to add linseed oil to a batch of unsatisfactory ink to make it usable. This lengthened drying time enough to cause the "Small Pox" variety.

ATTENTION:

WHEN THE TIME COMES TO SELL,
YOU DESERVE OUR COMPLETE ATTENTION



*These are just a few of the many auction catalogs
we have created for our important consignors*

These catalogues take time and they require attention—attention to the careful lotting of your collection, thorough research and thoughtful descriptions.

The staff at Matthew Bennett International is committed to giving you our complete time and attention so that you get the results you deserve—a lasting legacy for your labors and maximum realizations for your stamps and covers.

To find out how to get the most attention for your consignment, please contact us at (410) 647-1002.



MATTHEW BENNETT INTERNATIONAL

8096 Edwin Raynor Blvd, Suite B • Baltimore, MD 21122

info@bennettstamps.com • www.bennettstamps.com

(410) 647-1002

New Zealand Errors *Part 2*

50¢ Abel Tasman National Park

Tasman Park is depicted on the 50¢ stamp in green and dark green. The park on the shores of Tasman Bay is in the northwest corner of the South Island. The park contains coastal and elevated bush-clad country. The design depicts a typical view seaward from the park. Technical details are: Date of Issue: 1 September 1971; Designers: M. V. Askew; Printers: Joh Enschedé, Netherlands; Size: 50¢: 41.6mm x 25.3mm; Sheet Size: 100 stamps per sheet; Process: Photogravure and Lithography; and Perforation Gauge: 13.5 x 12.5.

Six major errors were reported on this stamp:

- A. Pale green omitted (2nd printing) (\$250): The pale green on the mountain at the right is omitted.
- B. Pale green omitted (3rd printing) (\$80): The pale green on the mountain at the right is omitted.
- C. Pinkish buff omitted (\$120): The pinkish colour is missing on the lake.
- D. Dark green omitted (\$750): The dark green on the mountain at the left is omitted.
- E. Dark green shifted upwards (\$300): The dark green on the mountain at the left is shifted up.
- F. Double perforations (\$200): Double horizontal and vertical perforations appear on the stamp, giving it the appearance of elongated perforation.

1975 Pictorials

The technical details of the 2¢-8¢ stamps described in this section are: Date of Issue: 26 November 1975; Designer: A. G. Mitchell, Wellington; Printer: Harrison and Sons, England; Stamp Size: 25mm x 29mm; Sheet Size: 100 stamps per sheet; Process: Photogravure; Perforation Gauge: Various combinations; and Paper Type: Harrison and Sons, printed on unwatermarked paper.

2¢ Lilli Marlene Rose

The 2¢ stamp depicts the Lilli Marlene rose, in a light red frame. This rose is a red or crimson floribunda that is popular in New Zealand gardens. It is believed that the name for the flower is from a war time song. It grows in compact bushes bearing large quantities of flower clusters. Its stem ranges in height from 50 to 70 cm. One major error was reported on this stamp:

- A. Four colour offset on reverse, plus a partial offset (\$1,000): The reverse shows a colour offset. The colour offset is apparent on the left stamp in the row and half of it is apparent on the second left stamp in the row.

3¢ Queen Elizabeth Rose

The 3¢ stamp displays the pink Queen Elizabeth Rose in a blue frame. It is considered to be one of the ten most popular roses for over 40 years, according to rose breeders. The flowers are said to be very lovely, elegant and look absolutely beautiful in a vase. This flower grows singly on one stem, similar to hybrid tea roses. One major error was reported on this stamp:

- A. Imperforate pair (\$750): The stamps have no vertical and horizontal perforations. The imperforate pair illustrated is

Joseph Monteiro

from the right side of the pane and has the selvedge of the pane.



Abel Tasman National Park: Above left: Normal, above right: pale green omitted, 2nd printing. Below: Pale green omitted, 3rd printing; pinkish buff omitted; dark green omitted; block with double perforations.



Top: Lilli Marlene rose complete and partial offset. Above: Queen Elizabeth rose imperf.

4¢ Super Star Rose

The 4¢ stamp displays the orange Super Star rose in a purple frame. It is considered to be a superior, world-famous rose in a fresh salmon-orange colour that will not fade even in full sunshine. The flowers give off a delightful raspberry fragrance. Even the buds are considered beautiful to behold. One major error was reported on this stamp:

- A. Imperforate pair (\$500): The stamps have no vertical and horizontal perforations. The imperforate pair illustrated is from the left side of the pane and has the selvedge of the pane.

8¢ Josephine Bruce Rose

The 8¢ stamp shows the Josephine Bruce rose in a yellow frame. This rose has an excellent deep velvety red colour and gives off a mild fragrance. The flowers are borne singly on strong stems and they last well in water. It blooms on low shrubs. Two major errors were reported on this stamp:

- A. Imperforate pair (\$500): The stamps have no vertical and horizontal perforations.
- B. Green and rose colours offset on reverse, plus a partial offset (\$850): The colour offset is apparent on the leftmost column in the pane but the offset is not constant throughout the column.

10¢ Queen Elizabeth II 1977

The portrait of Her Majesty Queen Elizabeth II is depicted on the 10¢ stamp in gold enclosed in a blue frame. The design on the portrait incorporates one of the five photographs taken by Mr. Warren Harrison previously used on the miniature sheet issued on 23 February 1977 to commemorate the Silver Anniversary of the Accession of Her Majesty.

The technical details of the stamp are: Date of Issue: 7 December 1977; Designer: New Zealand Post Office, Wellington; Printer: Harrison and Sons, England; Stamp Size: 25mm x 29mm; Sheet Size: 100 stamps per sheet; Process: Lithography; Perforation Gauge: 14.25 x 13.75 or 14.25 x 14.5; and Paper Type: Harrison and Sons, printed on unwatermarked paper.

Four major errors were reported on this stamp:

- A. Orange colour omitted (\$500): The colour of Her Majesty's dress appears white instead of buff.
- B. Magenta colour shift and ochre colour shift (\$325): The magenta and ochre colours are shifted on the image of Her Majesty. The colours appear shifted down on the body of Her Majesty and 'New Zealand' in part.
- C. Blue colour omitted (\$900): The blue colour of the frame of the stamp is omitted, as a result the name of the country "New Zealand" which is printed in white is not visible; and
- D. Miscut (Guillotine error) (This strip is actually joined to the one above) (\$500): Instead of going through the selvedge, the guillotine is shifted to the left. As a result, the right stamp is cut off of left pane and the right pane contains part of the cut off stamp and selvedge.

20¢ Paua Shell

The 20¢ stamp depicts the Paua shell in light to dark blue. The stamp has a black border. The Paua can be found on the open coast around New Zealand and the Chatham Islands. The animal is black and the interior of the shell has cloudy waves of rainbow colours, blues and greens being dominant. The shells were used by Maori to add a gleam of life to eyes in their wood carved figures. Today these shells are processed into attractive jewelry and curios.

The technical details of the stamp are: Date of Issue: 29 or 26 November 1978; Designer: I. Hulse, Wellington; Printer: Heraclio Fournier, Spain; Stamp Size: 29mm x 25mm; Sheet Size: 100 stamps per sheet; Process: Photogravure; Perforation Gauge: 13; and Paper Type: Unwatermarked paper.

One major error was reported on this stamp:

- A. Red colour offset on reverse (\$450): Only the red colour of the shell appears on the back of the stamp.

1982 Pictorials

2¢ Minerals - Agate

On the 2¢ 1982 pictorial stamp of New Zealand is shown one of New Zealand's minerals, the agate. Agate is one of a variety of mineral quartz and belongs to the largest class of minerals, the silicates. In New Zealand, agate is widely distributed, the main locations being Northland, Coromandel Peninsula, Canterbury and North Otago.

The technical details of the stamp are: Date of Issue: 1 December 1982; Designer: P Durrant, Christchurch; Printers: Leigh-Mardon, Australia; Stamp Size: 25mm x 30mm; Sheet Size: 100 stamps per sheet; Process: Lithography; Perforation Gauge: 12.75 x 12.5 x 14.25 x 14; and Paper Type: Unwatermarked.

One major error was reported on this stamp:

- A. Blue and grey colours offset on reverse (\$350): Only the light blue colour of the mineral appears on the back of the stamp in reverse.

25¢ Royal Portrait 1985

The Royal Portrait stamp was issued in 1985. Two stamps were issued a 25¢ and a 35¢ due to increases in postal rates. The technical details are: Date of Issue: 1 July 1985; Printers: Leigh-Mardon, Australia; Stamp Size: 25mm x 30mm; Sheet Size: 100 stamps per sheet; Process: Lithography; Perforation Gauge: 14.25 x 14; and Paper Type: Unwatermarked.

One major error was reported on this stamp:

- A. Absence of "Family Order" on blue sash (\$150): The pink family order on the blue sash which the Queen wore is missing.

2000 Scenic Definitives

\$3 Cape Kidnappers

The \$3 Scenic definitive issued in 2000 depicts Cape Kidnappers in Hawke's Bay. It is home to one of the world's two known mainland gannet colonies – large, powerful seabirds known for their plummeting 145 kilometre-per-hour dives for fish. The border design shows – the gannets of Cape Kidnappers.

The technical details are: Date of Issue: 6 March 2000; Designers: Red Cactus Design, Wellington, New Zealand; Printer: Southern Colour Print, New Zealand Stamp Size: 25mm x 30mm; Sheet Size: 50 stamps; Process: Lithography; Perforation Gauge: Gummed: 14; and Paper Type: 103 gsm red phosphor coated.

One major error was reported on this stamp:

- A. Major perforation shift (\$250): The horizontal perforations are shifted down and, as a result, they cut the value of the stamp, “\$3”, in half, and the legend “Cape Kidnappers” is missing at the top and appears at the bottom of the stamp. The stamps in the bottom row will not have the Cape Kidnappers inscription and will have a large white border. ❖

Editor's Note: This article will be continued in the next issue.

Bibliography

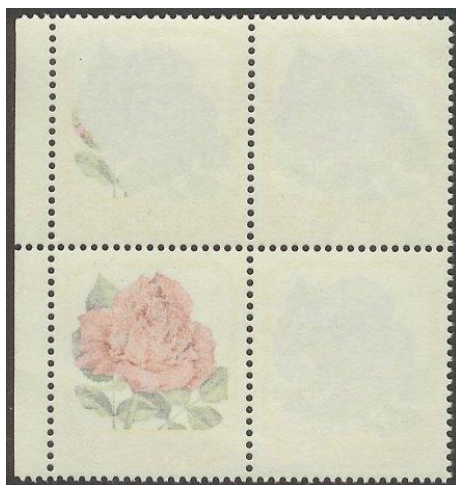
- [1] Monteiro, Joseph: Two Interesting New Zealand Errors, The EFO Collector, October-December 2009, issue 157, p.7ff.
- [2] Monteiro, Joseph: Four Recent Inverts from New Zealand, The EFO Collector, January-March 2010, issue 158, p. 7ff.
- [3] <http://www.sergent.com.au>



Above left: Queen Elizabeth normal; right: Magenta and ochre color.
Below left: Orange omitted; right: Blue omitted. Bottom: miscut.



Above: Super Star rose, imperf. Below: Josephine Bruce rose, imperf.
Bottom: Josephine Bruce rose, offset.

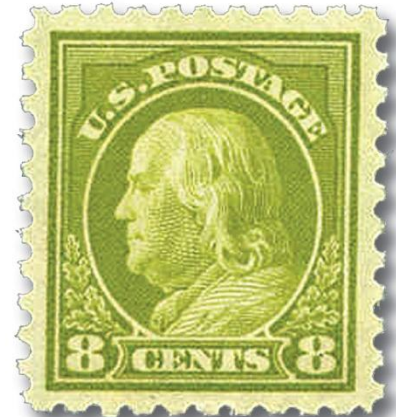
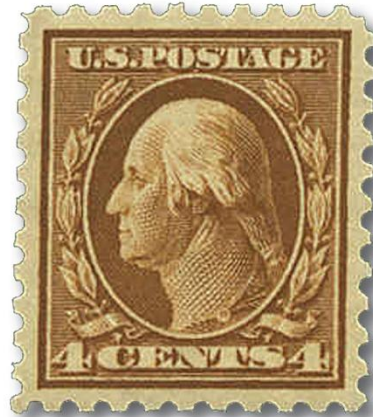


Above left: Paua shell, normal; Right: Red offset on back.
Below left: Agate normal; Right: Offset on reverse.



Above left: Royal portrait, normal; Right: “Family Order” missing.

You Own an Exceptional Stamp... Why Settle for an Ordinary Grade?



Protect Your Investment with the New Philatelic Foundation XQ Designation

Not all stamps with the same grade are equal. Stamps with extraordinary centering, generous margins, mint-fresh coloring and other exceptional qualities command a much higher price at the time of sale. When that time comes, make sure your stamp gets the recognition it deserves with the Philatelic Foundation's new "Exceptional Quality" designation.

With over 100 years of combined experience in evaluating, describing, and grading stamps, the Philatelic Foundation's professional staff is able to consistently and uniformly identify these outstanding stamps. Be part of this new era of enhanced grading – submit your stamps to the Philatelic Foundation.

Submit Your Stamps and Covers Today for a PF Certificate

Call 1-212-221-6555 or visit www.PhilatelicFoundation.org today to download a submission form. Fill out the one-page form and send it to us with your stamp or cover.

Philatelic Foundation Certificates have been the "gold standard" of philatelic certificates for 65 years.



The Philatelic Foundation

70 West 40th Street, 15th Floor
New York, NY 10018
(212) 221-6555
www.PhilatelicFoundation.org

1992 Columbus Varieties (Continued)

David Nye

Scott #2627
splotch (spot)

6-cent Columbus
Welcomed at
Barcelona

8-cent Columbus
Restored to Favor

\$3.00 Columbus
Describing his
Third Voyage

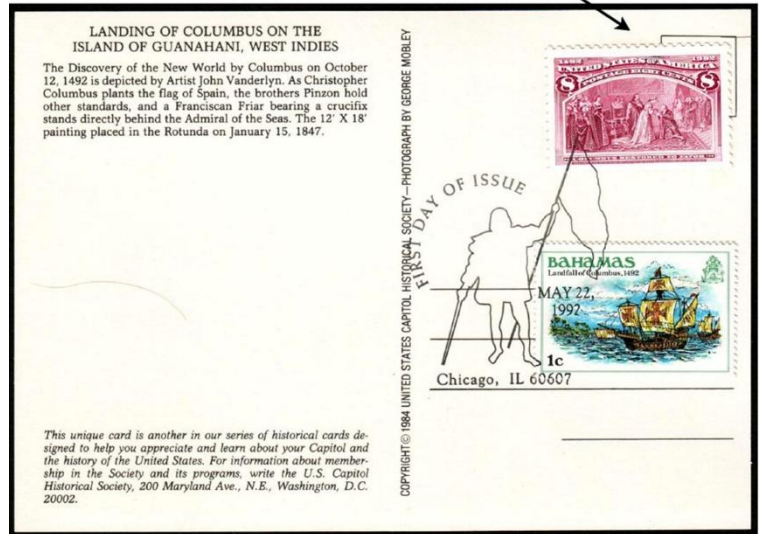


text speck (larger
capital L)



black ink at top
of 8-cent stamp

splotch



negative text speck (a bite out of O in word COLUMBUS)

I have seen 85
6-cent stamps of
this variety



Scott #2628
splotch (spot)

10-cent Columbus
Presenting Natives

15-cent Columbus
Announcing his
Discovery

\$2.00 Columbus in
Chains



green ink at
bottom of
8-cent stamp

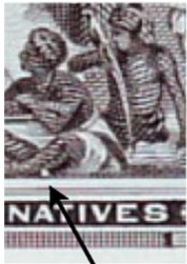


greenish ink at top
of \$2.00 stamp





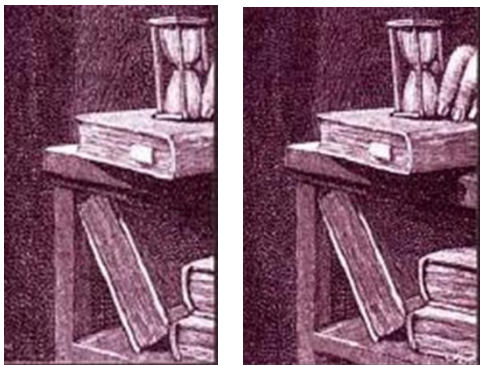
text speck (white mark)



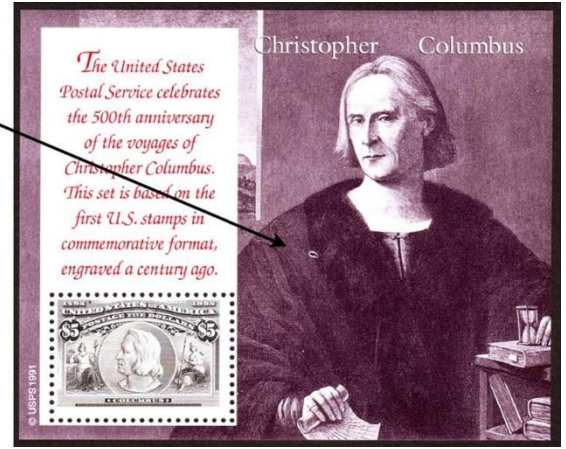
white dot by leg of Native American has been found on fifteen 10-cent stamps



Scott 2629

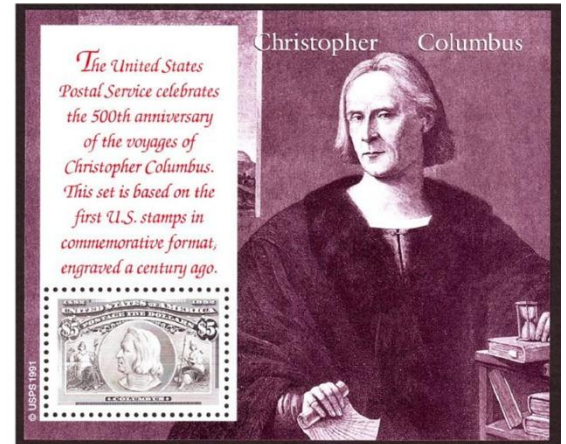


splotch

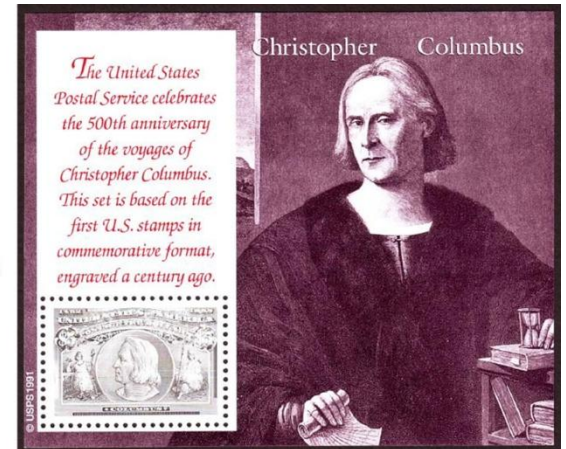


pale (under-inked) on left side of stamp

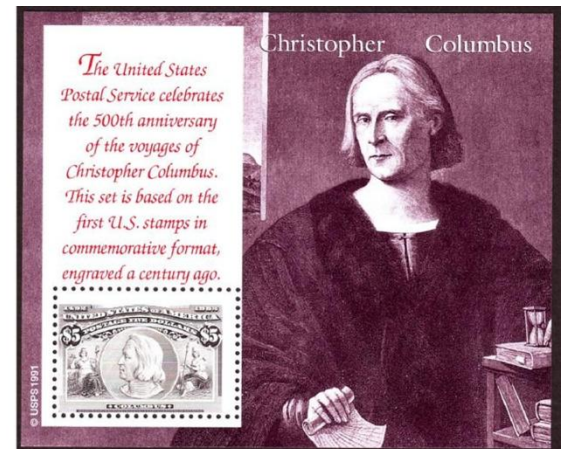
compare the \$5.00 value symbols



pale



poorly centered stamp



EFOs Of The Washington/Franklin Circular Dies

Bill Lehr, with assistance from Joe Pryluck & Thomas Galloway

Editor's Note: With this issue we are starting to present work documenting the EFOs of the Washington/Franklin Circular Dies by Bill Lehr with assistance from Joe Pryluck and Thomas Galloway.

Cracked Plate Die Varieties: They Do NOT Exist!



1¢

2¢

3¢



5¢

U.S. envelopes are embossed and printed in one step. Recessed steel dies, not plates, are used. The die is inked and then the paper is forced against it by a resilient platen below the paper. The platen forcing the paper into the die causes a certain amount of wrinkling or pinching of the paper. As a result of the pinching or folding, no ink is applied to the paper inside the fold. Close examination reveals that these ink voids have soft, irregular edges. These paper pinches are more common on rotary press printings. Rotary press printings contact the top of the die first which results in most of the voids being in the bottom area of those stamps. Frank Pogue, noted postal stationery EFO collector, dubbed this variety "die pinch crease". A true crack in the die would collect ink in the crack causing the crack to appear as a colored streak on the stamp imprint. These streaks would be in a consistent location on multiple stamps. These die pinch creases occur almost solely in the area between the two circles of value. These "cracks" add NO ADDITIONAL VALUE.

Errors

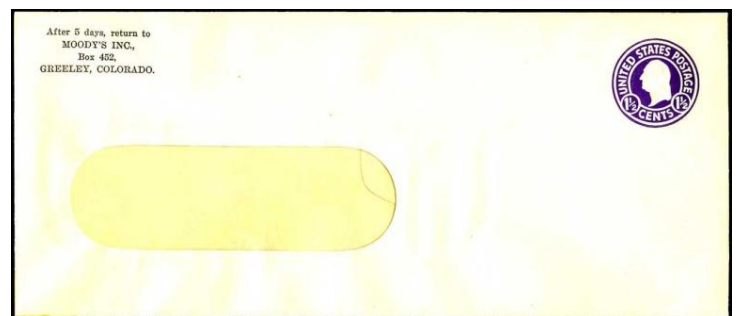
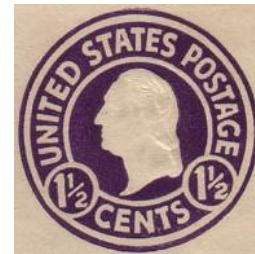
A report in the 1935 Chicago Tribune estimated one error or freak for every box of 500 printed. Some philatelists believe this estimate is not only low but extremely low.

High demand for stamped envelopes, changes in mechanization and automation of the printing process, and a lack of skilled labor led to the creation of a wide variety of EFOs during the lifetime of the circular die series. Much of the EFO material in collectors' hands should never have left the printing plant.

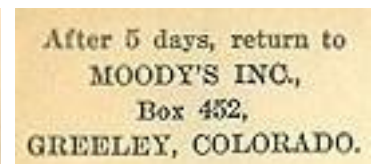
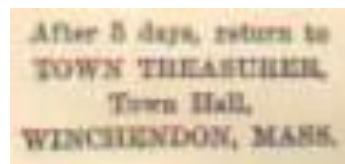
Wrong Color

Error of color for the majority of the circular die errors is actually an error of value. Die for the wrong value was placed on the press in error. This is verified by the discovery of the errors alternating with non-error envelopes in the same box. All of the known color errors occur with corner cards. The corner cards were printed at the same time as the stamp (See the picture of the U429 multiple impression below for evidence.)

1½¢



Die 132(A) printed in purple on white, size 20, window, wm 33; Scott U481b. This is known only with one of two corner cards:



346 of the Town Treasurer envelope were saved.

496 of the Moody's envelope were saved.

2¢

Die 134 green on white, size 13, window; Scott U429i, shown at top of next page

All with corner card for Queen Laundry

7 copies reported saved but 2 of those were later lost.

As of the Saddleback sale in 2007, surviving number of entire is believed to be 4.



Die 142 purple on blue; Scott U432j; 6 copies are reported as saved, all other copies are reported as deliberately destroyed by fire by the envelope manufacturer.

3¢



Die 143 carmine on white, plain front, size 11, wm 20; NY cc; Scott U436g.

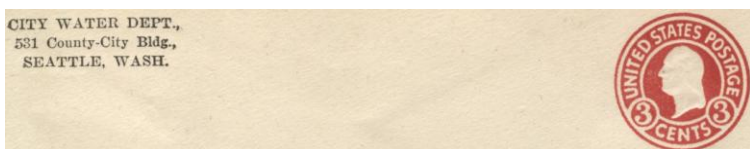


Die 143 black on amber, size 13, wm 20; Scott U437h: Ink for corner cards was also used for the stamp by mistake. Errors range from 100% black to just a very tiny hint of deep violet in the stamp.

All with one of two corner cards:

KASENIT COMPANY	ADDISON & SMITH
NEW YORK, NY	BALTIMORE, MD

Approx. 100 copies	Approx. 1 copy
--------------------	----------------



Die 144 carmine on white, size 10, window, WN 19, Scott U436h: All with one of 3 corner cards (the MD corner card is the scarcest and sells for a premium):

TREASURER OF SOMERSET Co.
LOCK BOX 205
PRINCESS ANNE, MD 2978

BERNHAM CHEMICAL & META: Corp.
309 Broadway
New York, NY

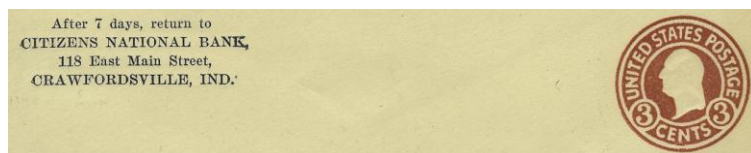
CITY WATER DEPT.
531 County-City Bldg.
SEATTLE, WASH.

Several thousand with CITY WATER DEPT. corner cards are known.

A Norfolk, VA, based business is reported to have returned 3000 of the 3¢ carmine errors to Washington, DC, for replacement as defective. No details of color, size, knife, wm are known.



Many of the Water Department envelopes had the corner card obscured and then were used for a variety of First Flight covers.



Die 144 carmine on amber, size 10, wm 19, U437g: All with corner card shown above, estimated number known is 43.



Die 144 carmine on blue, size 10, window, WM 19, Scott U439g: All with corner card shown above. 114 unused, 3-4 used copies known. Full corner, unused cut square known.

Reports of a 3¢ green (later described as blue-green) were originally thought to be changelings. Research determined that these 3¢ greens were actually envelopes from the 1870's issue that had been redeemed.

Linn's report of a 3¢ blue on blue on white paper were found to be a 3¢ purple on blue cut-to-shape, pasted onto a white paper envelope and postally used.

Shade Varieties

Shade varieties, especially for the Washington/Franklin circular dies are not considered to be errors. The long period of use for most of the circular dies, combined with a "not quite scientific" method of mixing the ink, has resulted in a wide

range of shades for most values. A few specific shades have achieved catalog mention. Die 134 on white is recognized in carmine, scarlet, dark red, orange, orange red and in other intermediate shades. Die 134 on amber is known in carmine, pink and orange, and Die 134 on blue is known in carmine and in pink. Other dies also exist in shade varieties. Shade varieties add only a small premium to the normal value to a specialist collector.

Color Missing

All of the circular die printings consist of a single color. To qualify as a color missing error no color may be visible under 10X magnification. However, for monochromatic printings, items with no color are considered to be freaks. Albinos and partial albinos are considered under "Freaks" below.

OFFSET (As Defined in The Philatelic Press)

True offset occurs when the printing hub is inked and the press cycles with no paper present. The ink is transferred to the resilient platen (a.k.a. the "make-ready"). The ink from the platen is then transferred to the back side of the envelope. This offset print will normally be a solid blob of color. There will also be a normal print on the front side unless multiple overlapped sheets have been fed through the press (Also see "Setoff" under "Freaks" below).

Francis Pogue, noted postal stationery EFO specialist, had this to say:

"Offset: More correctly called *setoff* by printers. An unintended offset or mirror image impression. A *machine offset* is caused when a press is activated without paper, i.e. it prints on the platen. The next sheet to go through the press then picks up the image in reverse. A *sheet offset* is caused by wet ink, transferring the image to paper stacked on top."

Preprinting Paper Fold



A fold in the paper, before printing occurs, can produce some interesting effects.

When the fold is in the area of the printing, the paper inside the fold will not receive any ink and when the fold is opened, the impression will be distorted and enlarged.



A preprinting paper fold, depicted at the bottom of the left column, that is smoothed out before printing is rather boring by comparison.

Multiple Impressions, One Circular Die & One Mercantile Die

Curiously, all of the circular die on Mercantile die errors involve circular Die 134, watermark 20.

2¢ Carmine

Die 134 with 1¢ green Mercantile, Die 111 on white, Scott U429I:

UPSS OC-1, size 10, wm 20, knife 59

UPSS OC-2, size 14, wm 20, knife 84

1¢ green impression inverted at lower left on unused entire with printed address to Philadelphia Rapid Transit Co. is known.

Die 134 with 1¢ green Mercantile, Die 111 on amber

Reported and pictured (in black and white) in Linn's whole number 1715, dated September 18th, 1961, p. 6. Die 134 in normal position, Die 111 on left side flap.

Die 134 with 2¢ carmine Mercantile, Die 115 on white, size 8, wm 20, UPSS OC-3/NSL.

Die 134 with 4¢ black Mercantile, Die 123 on white, UPSS OC-4/Scott U429k, size 7, wm 20, knife 25

Die 134 with 4¢ black Mercantile, Die 123 on amber, UPSS OC-5/NSL, size 23, wm 20, knife 112.

Multiple Impressions with Same Circular Die

Multiple impressions of the same die occur due to multiple passes through the press. Multiple impressions occur with mixed inked and albino impressions and with all inked impressions. Printers, being ever thrifty with the paper, would reprint any un-inked impressions that they noticed. Multiple inked impressions are printer's waste and should not have been released. Some slipped out with the normal product and others "escaped by the back door". There are many variations on the locations of the multiple impressions ranging from an almost complete overlap to widely separated images.

This article will be continued in the next issue.

~~~~~

## Perforations: We Have a Resource!

Let's Use It!

John M. Hotchner

P.O. Box 1125, Falls Church, VA 22041

jmhstamp@verizon.net

Cemil Betanov, our exceptional Editor, puts out an excellent journal for the EFOCC, and it is an opportunity for each of us to communicate our wants and interests to the Club's Membership. Who knows, if you were to do that, you might actually find material in your lines of interest in the EFOC auction, or even get offers of material, information, and suggestions for cooperative projects from those with similar interests.

Can it be that most of us are closet collectors who don't want to share the hobby with others? So it would seem. But I



would bet that it is more that we are all so busy – especially in the current economy – trying to put buttered toast on the table that we tend not to think about the things that would be nice to do because we are so focused on what we must do.

Except for this series of columns, I am in the same boat as you. I have not used the Wanted column, or written short items or feature articles for the EFOC, two of the best ways of sharing interests. But it strikes me that this column is just the place to begin doing so, and to invite you to list your interests and contact points, and send them to the Editor for publication in a future issue, or to include them in an article, or to do a Want Ad.

My interests – which is to say, material I am seeking in the EFO line are numerous, and I will list them here in no particular order. While I have your attention, I will also list some other material I am seeking, in hopes that some readers will also have similar interests and will want to trade or sell.

**EFOs**

- 1976 Bicentennial sheet errors and varieties
- #702 & 1016 Red Cross color misregistrations
- Italy “Bari Wolf” EFOs and usages
- 1969 Christmas official precancel EFOs
- U.S. Repair and rejection pieces and markings
- US/GB 1934/1935 Christmas seal EFOs
- Yemen EFOs
- Bangladesh overprint EFOs
- Double and triple perfs on US stamps
- Major U.S. Plate Varieties
- Liberty coil and booklet pane miscuts with plate #s
- Errors in cancellations
- BEP precancel errors/varieties
- Design-change misperfs

**Non-EFOs**

- Congressional precancels on cover
- Precancelled plate singles
- #65 Fancy and geometric cancels
- U.S. Postal counterfeits
- U.S. stamp design essays and art
- 1934/35 Christmas seal tied usages
- “Hubba Hubba” handstamps on Korean War-era APO covers
- Project Mercury-related autographs
- Mourning stamps and covers
- UN 1<sup>st</sup> Issue MI blocks
- First Day programs
- AMG travel permit stamp usages

This list goes a long way to explaining why I never run out of things to look for at dealers’ tables at shows and bourses! But I have also bought from and traded with individual collectors. Now, I again invite you to send in to Cemil a list of your interests to share with the membership. Who knows what might be offered to you!

*If you have a question, or a possible topic for John to cover in a future issue, please write to him at P.O. Box 1125, Falls Church, VA 22041-0125, or e-mail him at [jmhstamp@verizon.net](mailto:jmhstamp@verizon.net).*

# Secretary’s Report

Stan Raugh

[rare.plantsman@verizon.net](mailto:rare.plantsman@verizon.net)



## New Members

|                                                             |      |                                                                       |      |
|-------------------------------------------------------------|------|-----------------------------------------------------------------------|------|
| David T. Robinson<br>P. O. Box 90672<br>Rochester, NY 14609 | 1428 | William C. Walton<br>810 South Marion Avenue W<br>Bremerton, WA 98312 | 1429 |
| Nicholas Cort<br>P. O. Box 449<br>Claverack, NY 12513       | 1430 |                                                                       |      |

*A warm welcome to our new Members! ☺*

# Treasurer’s Report

David Hunt

[dhhunt@ptdprolog.net](mailto:dhhunt@ptdprolog.net)



## Report for the Quarter April 1 – June 30, 2011

|                    |                  |             |
|--------------------|------------------|-------------|
| Beginning balance: |                  | \$4231.36   |
| Income             | Dues             | \$678.00    |
|                    | Donation         | 3.29        |
|                    | Auction proceeds | \$1000.00   |
| Expenses           | Printing costs   | (\$1002.85) |
|                    | Postage costs    | (\$270.02)  |
| Ending balance:    |                  | \$4639.78   |

## Report for the Year July 1, 2010 – June 30, 2011

|                    |                       |             |
|--------------------|-----------------------|-------------|
| Beginning balance: |                       | \$5416.49   |
| Income             | Dues                  | \$2122.00   |
|                    | From Life Member Fund | \$235.00    |
|                    | Donations             | 7.29        |
|                    | Auction proceeds      | \$1000.00   |
|                    | Sample issues         | \$3.00      |
|                    | Advertising           | \$1248.00   |
| Expenses           | Printing costs        | (\$3776.80) |
|                    | Postage costs         | (\$1079.40) |
|                    | Auction insurance     | (\$250.00)  |
|                    | To Life Member Fund   | (\$825.00)  |
| Ending balance:    |                       | \$4639.78   |

Note: At the end of the fiscal year, the value of the Life Member Fund was \$2772.07

Respectfully submitted,  
David H. Hunt, Treasurer ☺



# EFOCC Auction Rules for Consignors

## Preparing Lots

Please use a blank form from a recent copy of the EFO Collector. Photocopies are fine. Please use a separate form for each lot.

Secure each lot to the front of the form; attach large lots to the reverse side. Protect all items with mounts, glassine, etc., and stiffeners, if necessary, but **be sure** item/items can be easily removed by Auction Director for examination and/or photographing. Do not use staples. Attach each item so that the description can be easily read. A simple and easy way to mount lots is to do so on dealer sales cards, or in glassines mounted face down for easy removal.

Include a reserve (minimum bid) or write "none". Lots may be revised to accurately describe items; or returned if necessary. Your name and EFOCC number must be on the consignment form, however, to preserve anonymity, these are removed from the consignment sheet before sending item to successful bidders.

Send consignments to David Hunt, 45 Fairway Drive, Denver, PA 17517. Use **insured** or **registered** U. S. Mail.

## Consignor Fees

Consignor commission is 10% of the hammer price, with a minimum bid of 50 cents per lot.

Unsold lots incur a 50 cent fee per lot, and the consignor pays return postage and insurance.

Expenses and printing constraints make it impractical to picture every lot, especially those which are large in size. The EFOCC will exercise discretion in picturing lots.

## Consignor Special Instructions

To save postage and labor, EFOCC can automatically re-submit unsold lots with lower minimums in a future auction, **if you instruct EFOCC clearly what to do.**

If you send duplicate or very similar lots, it is consignor's responsibility to state clearly if you would like to have these placed in different sales. Generally, EFOCC places all items received in the same sale to minimize paperwork.

## Consignment/Payment Timing

EFOCC receives consignments continually and prepares them for subsequent sales, roughly on a first-in/first-out basis. However, large lots may be spread over several auctions.

After the close of each sale, unsold lots are offered to bidders on a first come-first served basis for \$1 over the reserve with no buyer's commission or postage. This increases total sales, makes more bidders happy, and sells more lots for consignors, all for very little additional effort.

EFOCC needs approximately one month after auction's closing date to determine successful bidders, prepare and mail invoices, mail lots, receive payment from winners, list after sale lots and accept their offers, etc., etc. Thus, consignors can expect to receive payment about four to six weeks after an auction closes.

| Lot # | Catalog | EFOCC Auction #125 – Lot Descriptions                                                                                                                                                                                                                      | Cat Val | Minimum Bid |
|-------|---------|------------------------------------------------------------------------------------------------------------------------------------------------------------------------------------------------------------------------------------------------------------|---------|-------------|
| 1     | 1638    | Yugoslavia Color varieties. The dark brown is normal. The strip of three greenish stamps differs slightly in color from the two singles. Lot is one each of the two greenish stamps. Two lots available. Est val \$25-35. High bid gets the normal as well |         | donation    |
| 1a    | 1638    | Yugoslavia Remaining greenish stamp from strip of three. Est val \$10                                                                                                                                                                                      |         | donation    |
| 2     | 1610    | Yugoslavia color variety plus normal est val \$10                                                                                                                                                                                                          |         | donation    |
| 3     | 1417    | Yugoslavia color variety, should be "China red", est val \$10                                                                                                                                                                                              |         | donation    |
| 4     | 1810A   | Yugoslavia red omitted est val \$15-20. This lot for a single stamp only (Three lots available)                                                                                                                                                            |         | donation    |
| 4a    | 1810A   | ditto for strip of three. Will be awarded if bid for the strip of three exceeds the bids for three singles.                                                                                                                                                |         | donation    |
| 5     | 1201    | Yugoslavia Broken plate creates blob on Tito's forehead in middle stamp. Est val \$5-10                                                                                                                                                                    |         | donation    |
| 6     | 1445    | Yugoslavia Color variety (normal on right) est val \$10                                                                                                                                                                                                    |         | donation    |
| 7     | RA32    | Yugoslavia Color omitted (with normal on left) est val \$20                                                                                                                                                                                                |         | donation    |
| 8     |         | Yugoslavia Printer's name, etc. omitted on lower two stamps on left block and partially omitted on LL stamp in right block. Est val \$8-12                                                                                                                 |         | donation    |
| 9     |         | Yugoslavia Extra line on envelope on UR stamp in block of four est val \$7-10                                                                                                                                                                              |         | donation    |
| 10    | 991     | Yugoslavia SS of nine with red omitted plus normal. Normal has gum adhesions on back. Est val \$125-175                                                                                                                                                    |         | donation    |
| 10a   | 1469    | Yugoslavia Tito sheet of 8. Middle right stamp has defect in "0" of denomination. Est val \$30                                                                                                                                                             |         | donation    |
| 11    | 498     | 1¢ Washington misperf pair NH                                                                                                                                                                                                                              |         | \$20.00     |

# EFOCC Auction Rules for Bidders

## How to Bid

Please bid on a consignment form from a recent EFO Collector. A photocopy is fine. Include your EFOCC membership number. For new bidders and non-EFOCC members, please include your APS membership number. Sign your bid sheet to acknowledge acceptance of the EFOCC auction rules; unsigned forms can not be accepted. Submit bids to David Hunt, 17 Fairway Drive, Denver, PA 17517, e-mail to [dhhunt@ptdprolog.net](mailto:dhhunt@ptdprolog.net).

## Bidding Precautions

Minimum bids are not estimates, but are true reserves established by the consignors. Bids below the listed reserve will not be accepted.

Bidders are responsible for inaccurate bids. Bids do not have to be typed, but, please, be sure numbers and amounts are clearly legible. Confirm phone and e-mail bids with a written bid sheet.

## Auction Bid Increments

Please use the following increments when bidding and/or assigning reserves to consignments. Lots are sold to the highest bidder at one advance over the second highest bid.

EFOCC reduces non-conforming bids to the next lower increment. For example, a bid of \$39.50 will be entered as \$39.00.

## Special Bidding Instructions

As the EFOCC auction is a small auction, special instructions can not be easily accommodated. EFOCC can not accept "BUY" bids, nor "INCREASE BY...%" bids. **Please, make your final, best, and highest bid and you will get the lot at the lowest price available.**

## Bidders' Payments

A 10% buyer's premium is added to the hammer price of each lot. Buyers pay postage, plus insurance on lots valued at over \$10.00.

Payment is due upon receipt of invoice. If you will be out of town for a while just after an auction closes, or are moving to your summer home about that time, please let EFOCC know at the time you place your bids.

## Returning Lots

Within five (5) days of receipt of awarded lots, you may return any lot which is not described correctly provided such lot is still in its original condition. If an expertising certificate is a condition of bidding, please inform EFOCC of this before auction closes.

## One Final Request

Please **bid generously on donation lots** whose monies go entirely to the benefit of the EFOCC.



|    |        |                                                                                                                                                                |          |          |
|----|--------|----------------------------------------------------------------------------------------------------------------------------------------------------------------|----------|----------|
| 12 | 498a   | 1¢ Washington vert pair, horiz imperf NH                                                                                                                       | \$650.00 | \$475.00 |
| 13 | 499    | 2¢ Washington horiz misperf pair, LH, pencil notation on back                                                                                                  |          | \$18.00  |
| 14 | 499    | 2¢ Washington block of four, horiz central (blind) perfs shifted down 6.5mm through top of Washington's head, NH, gum crease                                   |          | \$60.00  |
| 15 | 408    | 1¢ Washington, corner fold-under prior to gumming but after printing, leaving gum on front. Mostly in margin but LL corner of LL stamp is affected as well. NH |          | \$45.00  |
| 16 | 3632c  | 37¢ Flag imperf strip of four NH                                                                                                                               | \$100.00 | \$100.00 |
| 17 | 2529   | 19¢ rowboat coil, imperf pair, printers' waste, NH                                                                                                             |          | \$55.00  |
| 18 | 1897Ac | 2¢ Locomotive imperf coil pair MNH                                                                                                                             | \$50.00  | \$25.00  |
| 19 | 1281   | 3¢ Parkman, missing denomination misperf                                                                                                                       |          | \$12.00  |
| 20 | 1297c  | 3¢ Parkman, vert line pair coil strip of four, imperf, NH                                                                                                      |          | \$25.00  |
| 21 | 1297c  | 3¢ Parkman, vert coil pair, imperf and miscut NH                                                                                                               |          | \$25.00  |
| 22 | 3632   | 37¢ Flag pair with shifted die cuts NH                                                                                                                         |          | \$5.00   |
| 23 | 2132   | 12¢ Stanley Steamer strip of five miscut with plate no. 2 split top and bottom NH                                                                              |          | \$7.50   |
| 24 | 1305e  | 15¢ O W Holmes horiz coil strip of three with blind perfs between left two stamps NH                                                                           |          | \$20.00  |
| 25 | 1816b  | 12¢ Liberty Lamp coil imperf pair NH                                                                                                                           | \$175.00 | \$85.00  |
| 26 | 1618Ce | 15¢ Flag horiz coil strip of four, imperf between center two stamps NH                                                                                         | \$150.00 | \$120.00 |
| 27 | 3112b  | 32¢ Christmas, horiz gutter pair, no die cutting, with plate number NH                                                                                         |          | \$110.00 |
| 28 | 1035e  | 3¢ Liberty misperf horiz margin pair NH                                                                                                                        |          | \$10.00  |
| 29 | 2595b  | 29¢ Eagle, pair with no die cutting NH                                                                                                                         | \$150.00 | \$110.00 |
| 30 | 1761   | 15¢ Owl color shift NH                                                                                                                                         |          | \$20.00  |
| 31 | 1035   | 3¢ Liberty misperf single NH                                                                                                                                   |          | \$10.00  |
| 32 | 2609   | 29¢ Flag misperf coil strip of five NH                                                                                                                         |          | \$20.00  |
| 33 | 1383b  | 6¢ Eisenhower missing blue "6 cents postage". This is the copy sent to Scott and is now listed in catalog. Very rare NH                                        |          | \$500.00 |
| 34 | 1510   | 10¢ Jefferson Memorial misperf plate block of four                                                                                                             |          | \$8.00   |
| 35 | 2103   | 20¢ Hispanic Americans misperf NH                                                                                                                              |          | \$22.00  |
| 36 | 973    | 3¢ Rough Riders, fold and miscut block of four, hinge reinforcement on gutter perfs                                                                            |          | \$35.00  |
| 37 | 899    | 1¢ Defense block of eight, web splice, dbl paper, NH except for splice                                                                                         |          | \$25.00  |
| 38 | 901    | 3¢ Defense block of eight, web splice, dbl paper, NH except for splice                                                                                         |          | \$20.00  |
| 39 | 905    | 3¢ Victory block of ten, web splice, dbl paper, NG                                                                                                             |          | \$25.00  |
| 40 | 1208   | 5¢ Flag block of four with two-way misperf NH                                                                                                                  |          | \$10.00  |
| 41 | 1541a  | 10¢ Minerals misperf block NH                                                                                                                                  |          | \$10.00  |
| 42 | 1541a  | 10¢ Minerals block, color shift NH                                                                                                                             |          | \$35.00  |
| 43 | 1799a  | 15¢ Christmas imperf ZIP block NH                                                                                                                              | \$180.00 | \$140.00 |
| 44 | 702    | 2¢ Red Cross misperfed pair showing part of stamp from pane below LH, pre-printing paper fold                                                                  |          | \$125.00 |
| 45 | 702    | 2¢ Red Cross red shifted up into 'postage' NH                                                                                                                  |          | \$9.00   |
| 46 | 703    | 2¢ Yorktown vignette shift up. NH disturbed gum                                                                                                                |          | \$4.00   |
| 47 | 703    | 2¢ Yorktown vignette shift left NH                                                                                                                             |          | \$7.00   |
| 48 | 1585   | 4¢ Freedoms 2-way misperf NH                                                                                                                                   |          | \$18.00  |
| 49 | 703    | 2¢ Yorktown vignette shift up NH                                                                                                                               |          | \$12.00  |
| 50 | 703    | 2¢ Yorktown vignette shift down NH Missing a bit of gum (could be natural gum skips?) SE at right                                                              |          | \$9.00   |
| 51 | 703    | 2¢ Yorktown vignette shift to right NH margin copy                                                                                                             |          | \$10.00  |
| 52 | 900a   | 2¢ Defense, pair imperf between NH. Blind perfs between R stamp and selvedge, rough UR corner, pencil no. on back                                              |          | \$20.00  |
| 53 | 900    | 2¢ Defense change of legend misperf NH                                                                                                                         |          | \$15.00  |
| 54 | 901    | 3¢ Defense two-way misperf NH                                                                                                                                  |          | \$23.00  |
| 55 | 901    | 3¢ Defense pair with one perf hole between, some blind perfs and one hole between left stamp and selvedge                                                      |          | \$8.00   |
| 56 | 1727   | 13¢ Talking Pictures interesting color shift NH                                                                                                                |          | \$40.00  |
| 57 | 1571   | 10¢ IWY color shift NH                                                                                                                                         |          | \$25.00  |

|     |       |                                                                                                            |          |          |
|-----|-------|------------------------------------------------------------------------------------------------------------|----------|----------|
| 58  | 1584  | 3¢ Ballot Box gutter miscut with block of four on one side and part of three stamps from adjoining pane NH |          | \$50.00  |
| 59  | 1396  | 8¢ USPS gold lettering shifted R, eagle shifted left NH                                                    |          | \$13.00  |
| 60  | 1477  | 8¢ Spirit misperfed pair NH                                                                                |          | \$18.00  |
| 61  | 1478  | 8¢ Spirit color shift NH                                                                                   |          | \$35.00  |
| 62  | 1335  | 5¢ Biglin Brothers misperf NH                                                                              |          | \$7.00   |
| 63  | 1271  | 5¢ Florida gold shift to right creates white castles in flag NH                                            |          | \$13.00  |
| 64  | 2281a | 25¢ Honeybee imperf coil pair NH                                                                           | \$45.00  | \$22.00  |
| 65  | 1873  | 3.5¢ Violins misperf coil pair NH                                                                          |          | \$23.00  |
| 66  | 2284b | 25¢ Birds, pair with color shift NH                                                                        |          | \$8.00   |
| 67  | 1001  | 3¢ Colorado change of legend misperf, vertical crease on left edge NH                                      |          | \$14.00  |
| 68  | 1613a | 3.1¢ Guitar precancel gap strip of four with nice misperf NH                                               |          | \$90.00  |
| 69  | 1029  | 3¢ Columbia Univ. misperf NH                                                                               |          | \$20.00  |
| 70  | 1520  | 10¢ Jefferson Memorial misperf coil pair NH                                                                |          | \$15.00  |
| 71  | 2046  | 20¢ Babe Ruth misperf. Great topic and rare NH                                                             |          | \$60.00  |
| 72  | 1122  | 4¢ Forest Cons. Misperfed pair NH                                                                          |          | \$15.00  |
| 73  | 1338f | 8¢ Flag misperf block of four NH                                                                           |          | \$15.00  |
| 74  | 1894  | 20¢ Flag misperf block of four NH                                                                          |          | \$17.00  |
| 75  | 1158  | 4¢ US-Japan misperf NH                                                                                     |          | \$12.00  |
| 76  | 2412  | 25¢ House Bicent. Gold color shift NH. Uncommon                                                            |          | \$30.00  |
| 77  | 1549  | 10¢ Retarded Children misperf block of four NH                                                             |          | \$10.00  |
| 78  | 2411  | 25¢ Toscanini misperf pair NH                                                                              |          | \$20.00  |
| 79  | 1068  | 3¢ Old Man of the Mountains misperf margin pair NH. Buy it before it crumbles away!                        |          | \$10.00  |
| 80  | 1843a | 15¢ Christmas imperf pair NH                                                                               | \$50.00  | \$25.00  |
| 81  | 1485  | 8¢ Jeffers misperf with margin and plate number NH                                                         |          | \$18.00  |
| 82  | 1716  | 13¢ Lafayette plate block with change of design misperf NH                                                 |          | \$100.00 |
| 83  | 2026a | 20¢ Christmas imperf pair NH                                                                               | \$150.00 | \$85.00  |
| 84  | 815   | 10¢ Tyler misperf NH                                                                                       |          | \$20.00  |
| 85  | 2023  | 20¢ St. Francis misperf pair NH                                                                            |          | \$5.00   |
| 86  | 1278  | 1¢ Jefferson sheet stamp misperf NH                                                                        |          | \$13.00  |
| 87  | 1896b | 20¢ Flag complete booklet pane, vert perms shifted past flag pole of right stamps NH                       |          | \$30.00  |
| 88  | 1580  | 1975 Christmas color shift NH                                                                              |          | \$11.00  |
| 89  | 1096  | 8¢ Magsaysay misperf NH                                                                                    |          | \$18.00  |
| 90  | 1111  | 8¢ Bolivar misperf pair NH                                                                                 |          | \$35.00  |
| 91  | 1118  | 8¢ Kossuth misperf pair NH                                                                                 |          | \$25.00  |
| 92  | 1169  | 8¢ Garibaldi misperf NH                                                                                    |          | \$20.00  |
| 93  | 1148  | 8¢ Masaryk misperf pair NH                                                                                 |          | \$18.00  |
| 94  | 1926  | 18¢ Edna St. Vincent Millay black color shift NH                                                           |          | \$20.00  |
| 95  | S7    | 25¢ Savings Stamp misperf pair NH                                                                          |          | \$20.00  |
| 96  | 295   | 2¢ Transportation vignette shift up NG                                                                     |          | \$25.00  |
| 97  | 1293  | 50¢ Lucy Stone misperf NH                                                                                  |          | \$12.00  |
| 98  | 1293  | 50¢ Lucy Stone misperf pair NH                                                                             |          | \$15.00  |
| 99  | 2211  | 22¢ Duke Ellington marginal single imperf horizontally NH                                                  | \$825.00 | \$350.00 |
| 100 | 2096b | 20¢ Smokey Bear vertical pair imperf between NH                                                            | \$175.00 | \$125.00 |
| 101 | 2096  | 20¢ Smokey Bear imperf bottom margin NH                                                                    |          | \$35.00  |
| 102 | 2399a | 25¢ Christmas gold omitted NH                                                                              |          | \$23.00  |
| 103 | 1547  | 10¢ Energy Cons. Color shift NH                                                                            |          | \$7.00   |
| 104 | C92a  | 31¢ Wright Bros. Color shift NH                                                                            |          | \$60.00  |
| 105 | C79   | 13¢ Airmail misperf NH                                                                                     |          | \$18.00  |
| 106 | 1139  | 4¢ Credo pair with two-way misperf NH                                                                      |          | \$12.00  |
| 107 |       | Collection of 38 different misperfed coil singles from 1055 to C73 NH (4 examples shown)                   |          | \$80.00  |
| 108 | 2041  | 20¢ Brooklyn Bridge misperf NH                                                                             |          | \$12.00  |
| 109 | 1291  | 30¢ John Dewey misperf pair NH                                                                             |          | \$15.00  |
| 110 | 1862  | 20¢ Truman misperf NH                                                                                      |          | \$18.00  |
| 111 | 2035a | 20¢ Balloons block with large misperf NH                                                                   |          | \$60.00  |
| 112 | 1190  | 4¢ Nursing black color shift down LH                                                                       |          | \$5.00   |
| 113 | 1208  | 5¢ Flag misperf single NH                                                                                  |          | \$8.00   |
| 114 | 1689i | 31¢ Valley Forge SS, "USA 31¢" omitted from last stamp on right                                            | \$450.00 | \$325.00 |



|     |         |                                                                                           |          |
|-----|---------|-------------------------------------------------------------------------------------------|----------|
| 115 | 999     | 3¢ Nevada block with large misperf NH                                                     | \$40.00  |
| 116 | 2015    | 20¢ Libraries block with misperf NH                                                       | \$10.00  |
| 117 | 2154    | 22¢ WW1 Veterans block with misperf NH                                                    | \$20.00  |
| 118 | 1439    | 8¢ John Sloan misperf with margin NH                                                      | \$12.00  |
| 119 | 1345-54 | 6¢ Revolutionary War Flags misperfed strip of 20 showing partial stamps from next pane NH | \$250.00 |



Auction 125 closes on December 31<sup>st</sup>, 2011.  
 View large auction pictures in color at [www.efocc.org](http://www.efocc.org)



*New large auction pictures in color at [www.efocc.org](http://www.efocc.org)*

*Auction 125 closes on December 31<sup>st</sup>, 2011.*





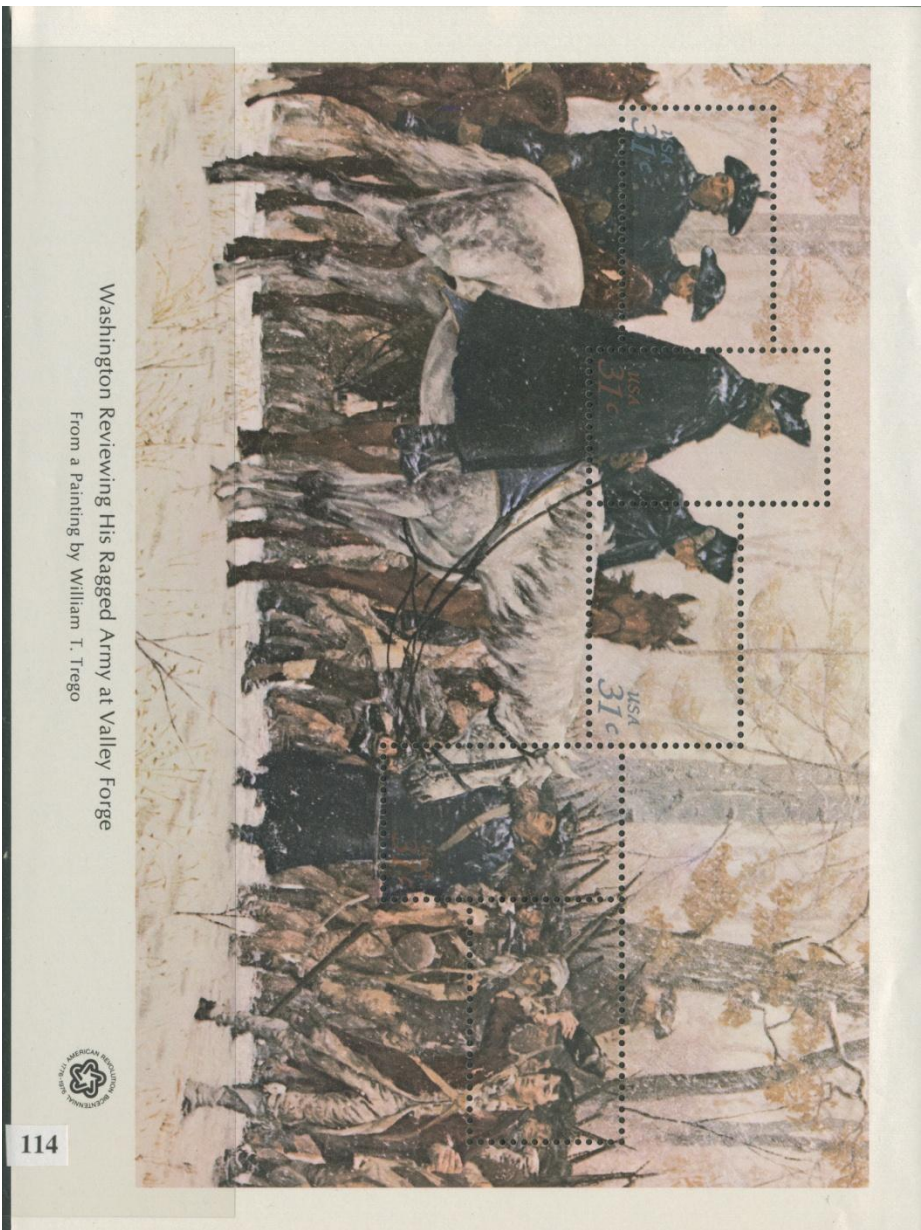






*This view large auction pictures in color at [www.efocc.org](http://www.efocc.org)  
 Auction 125 closes on December 31, 2011.*





Washington Reviewing His Ragged Army at Valley Forge  
From a Painting by William T. Trego



114



## EFOCC Auction 123 Realizations (Closed June 30<sup>th</sup>, 2011)

| Lot | Hammer | Lot | Hammer | Lot | Hammer | Lot | Hammer | Lot | Hammer | Lot | Hammer | Lot | Hammer | Lot | Hammer |
|-----|--------|-----|--------|-----|--------|-----|--------|-----|--------|-----|--------|-----|--------|-----|--------|
| 1   | \$35   | 2   | \$14   | 3   | \$12   | 4   | nb     | 5   | nb     | 6   | \$15   | 7   | nb     | 8   | nb     |
| 9   | \$12   | 10  | nb     | 11  | nb     | 12  | \$18   | 13  | \$11   | 14  | nb     | 15  | \$45   | 16  | nb     |
| 17  | \$75   | 18  | \$7.50 | 19  | nb     | 20  | nb     | 21  | \$8    | 22  | \$9    | 23  | \$8    | 24  | \$10   |
| 25  | nb     | 26  | nb     | 27  | \$32   | 28  | \$17   | 29  | \$7    | 30  | \$8.50 | 31  | \$18   | 32  | \$25   |
| 33  | \$25   | 34  | nb     | 35  | \$125  | 36  | \$13   | 37  | \$30   | 38  | nb     | 39  | \$12   | 40  | \$10   |
| 41  | nb     | 42  | \$13   | 43  | \$12   | 44  | \$12   | 45  | \$9    | 46  | nb     | 47  | nb     | 48  | \$15   |
| 49  | \$20   | 50  | \$20   | 51  | \$28   | 52  | nb     | 53  | nb     | 54  | \$9    | 55  | nb     | 56  | \$37   |
| 57  | \$13   | 58  | \$9    | 59  | \$21   | 60  | nb     | 61  | nb     | 62  | \$20   | 63  | nb     | 64  | \$17   |
| 65  | \$16   | 66  | nb     | 67  | nb     | 68  | \$12   | 69  | nb     | 70  | \$25   | 71  | \$13   | 72  | nb     |
| 73  | \$15   | 74  | nb     | 75  | \$50   | 76  | nb     | 77  | nb     | 78  | nb     | 79  | \$14   | 80  | nb     |
| 81  | nb     | 82  | nb     | 83  | \$17   | 84  | nb     | 85  | nb     | 86  | \$5    | 87  | \$20   | 88  | nb     |
| 89  | \$30   | 90  | \$10   | 91  | nb     | 92  | nb     | 93  | nb     | 94  | nb     | 95  | \$20   | 96  | \$11   |
| 97  | nb     | 98  | nb     | 99  | \$5    | 100 | \$330  | 101 | \$51   |     |        |     |        |     |        |

**Members, please note:** Unsold lots from Auction 123 are available for sale on a first come-first served basis for \$1 over the reserve price with no buyer's commission and no postage. Please contact the Auction Director for purchasing these lots.

**EFOCC Auction Consignment Form**

EFOCC use – only ⇨ AUCTION #:

LOT #:

|                                                                                                                                                        |                                                                                            |                                                                                                                                                          |
|--------------------------------------------------------------------------------------------------------------------------------------------------------|--------------------------------------------------------------------------------------------|----------------------------------------------------------------------------------------------------------------------------------------------------------|
| Consignor: _____<br>Address: _____<br>_____<br>Telephone: (____) - _____<br>Email/Fax: _____<br>EFOCC Membership No: _____<br>APS Membership No: _____ | Country (if not U.S.) _____<br>Catalog No. _____<br>_____<br>Catalog Value: _____<br>_____ | Condition (circle): NH LH HH HR NG USED<br><br>Please check if this is a donation lot: <input type="checkbox"/><br><br>Please note Minimum Bid: \$ _____ |
|--------------------------------------------------------------------------------------------------------------------------------------------------------|--------------------------------------------------------------------------------------------|----------------------------------------------------------------------------------------------------------------------------------------------------------|

Description of item: {Please note any faults and fasten lots below this line or on the reverse side}

*Instructions:* Fill in all information. Attach each lot to the front of one form, using a stock card, face-down glassine or other mount. Use separate rigid sheet for larger lots and attach a completed form. *No staples - please.* Make sure it is easy for us to remove and re-insert each lot.



Send consignment form(s) with lot(s) to: David Hunt, 45 Fairway Drive, Denver, PA 17517  
 For your protection, we recommend that you send lot(s) by registered or insured mail.



**EFOCC Auction Bid Sheet**

Name: \_\_\_\_\_ EFOCC #: \_\_\_\_\_ *New Bidders.....APS Membership appreciated: \_\_\_\_\_*

Address: \_\_\_\_\_ Phone: (\_\_\_\_) \_\_\_\_\_ **Please limit my purchases to:**

City: \_\_\_\_\_ State: \_\_\_\_\_ Zip: \_\_\_\_\_ \$ \_\_\_\_\_

Please execute the following bids for me in EFOCC Auction # \_\_\_\_\_

\_\_\_\_\_  
 {Signature - all bid sheets must be signed}      {Date}      Earliest postmark wins tie bids!!

| Lot# | Bid | Lot# | Bid | Lot# | Bid | Lot# | Bid | Lot# | Bid | Lot# | Bid |
|------|-----|------|-----|------|-----|------|-----|------|-----|------|-----|
|      |     |      |     |      |     |      |     |      |     |      |     |
|      |     |      |     |      |     |      |     |      |     |      |     |
|      |     |      |     |      |     |      |     |      |     |      |     |
|      |     |      |     |      |     |      |     |      |     |      |     |
|      |     |      |     |      |     |      |     |      |     |      |     |
|      |     |      |     |      |     |      |     |      |     |      |     |
|      |     |      |     |      |     |      |     |      |     |      |     |

*Postage will be charged to the bidder. A 10% buyer's premium will be added to successful bids.*  
 Mail bid sheets to: David Hunt, 45 Fairway Drive, Denver, PA 17517 or email to: dhhunt@ptdprolog.net



# For over 60 years...



## American philately's #1 dealer in major errors.



Now also your source  
for investment grade  
U.S. classics.

**Jack Nalbandian, Inc.**

Post Office Box 71  
East Greenwich RI 02818  
Toll Free: (877) 742-6168  
Phone: (401) 885-5020  
nalbandianj@earthlink.net  
[www.nalbandstamp.com](http://www.nalbandstamp.com)



# COLLECTORS LOVE OUR EFO'S

## Inverts



## Misperfs



## Missing Colors



## Imperfs



Your Source for Buying, Selling & Consigning Errors, Freaks & Oddities

Each auction features hundreds of EFO's from the USA and around the World.

For consignor information or a complimentary catalog, call us toll free: **1-800-782-0066** or visit our website at [www.Regency-Superior.com](http://www.Regency-Superior.com)

STAMPS • COINS • SPACE • SPORTS • HOLLYWOOD

# REGENCY SUPERIOR

*Saint Louis, Missouri*  
229 N. Euclid Avenue  
Saint Louis, MO

*Beverly Hills, California*  
9478 W. Olympic Blvd., Ste 200  
Beverly Hills, CA 90212

EXPERIENCED AUCTIONEERS

# SINCE 1929

