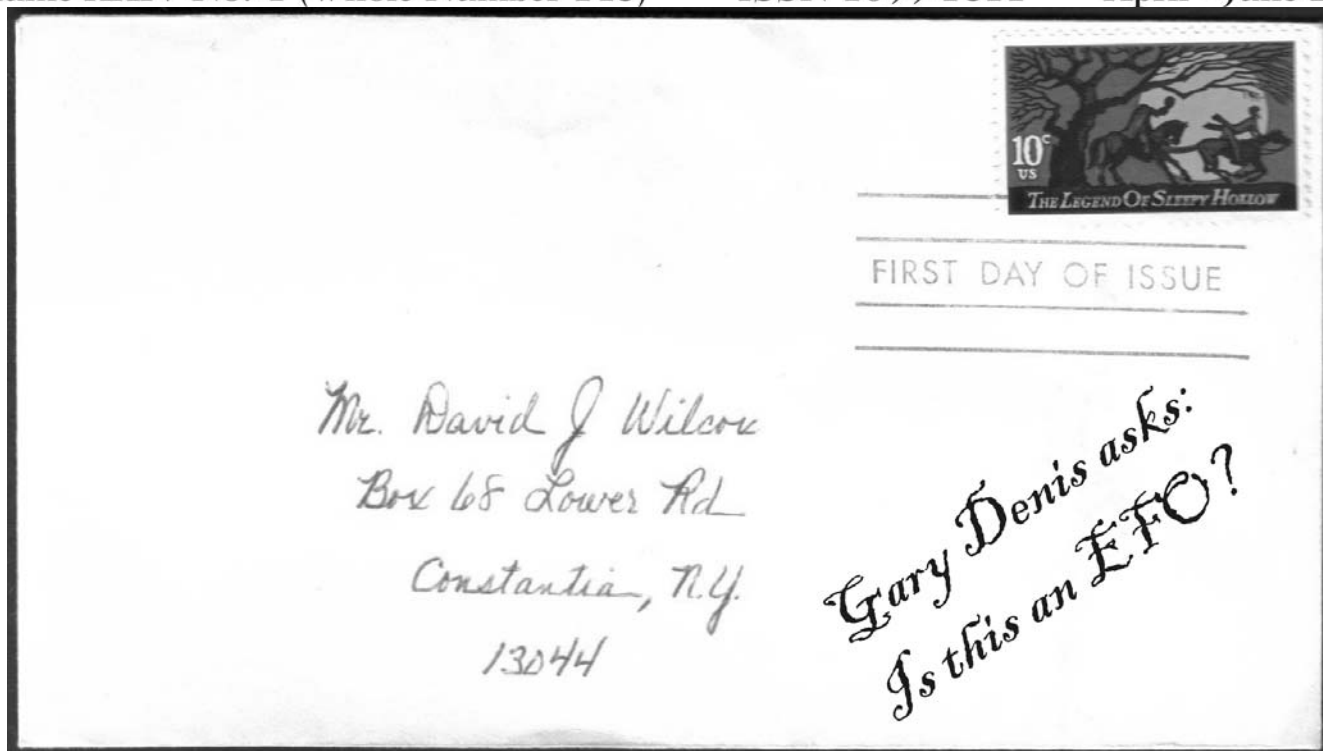


# The EFO Collector



APS Affiliate #103 • A Publication of the EFO Collectors' Club • ATA Chapter #94  
Volume XXIV No. 4 (Whole Number 143) ISSN 1099-7377 April - June 2006



## Inside This Issue

Joseph Monteiro: Miscut Canadian Booklet Errors	5	From Your Editor	3
Stan Goldfarb: Freak vs. Error, Minor Error vs. Major Error	11	To The Editor	3
Gary Denis: A Few Sleepy Hollow First Day Cover Oddities	13	Exhibiting EFOCC Members	23
Hideo R. Yokota: Pages From My Exhibit	15	President's & Auction Director's Report	25
Joel Radin: My Favourite EFO	21	Treasurer's Report	25
John Hotchner's Perforations: What Do We Know About Ourselves?	23	Secretary's Report	25
Jim McDevitt Presents Auction 104	26		

*Please Be Sure To Fill Out And Mail Questionnaire on Page 24*



*To Err is Human, To Find is Divine*



Authors and contributors have express permission to reuse of their material elsewhere without permission. Except for material reprinted herein, or material individually copyrighted by the author, material herein may be reprinted elsewhere as long as full credit is given to **The EFO Collector**, citing the issue date and number and giving the address of the EFOCC Secretary.

**The EFO Collector** is published quarterly, in March, June, September and December. The submission deadline for any issue is the 15<sup>th</sup> of the month preceding the issue, e.g. 2/15, 6/15, 8/15 and 11/15. Send or e-mail editorial material directly to the Editor. Sample copies of **The EFO Collector** are available for \$3 from the Secretary.

Membership includes subscription to **The EFO Collector**.

Membership fees are as follows:

	Members with addresses in the U.S. or Canada	Members with addresses elsewhere
Initiation fee and first year's dues	\$16.00	\$30.00
One year membership renewal	\$15.00	\$30.00
Two year membership renewal	\$27.00	\$60.00

## EFOCC Officers (2004-2006)

President	CWO Jim McDevitt	cwouscg@aol.com	7643 Sequoia Drive North Mobile, AL 36695-2809 POB 1125 Falls Church, VA 22041	Phone: To be announced Fax: To be announced Phone: (202) 216-5855
Vice-President	John M. Hotchner	jmhstamp@ix.netcom.com	7643 Sequoia Drive North Mobile, AL 36695-2809	Phone: To be announced Fax: To be announced
Auction Director	CWO Jim McDevitt	cwouscg@aol.com	45 Fairway Drive Denver, PA 17517	Phone: (717) 445-9420
Treasurer	David Hunt	dhhunt@ptdprolog.net	4217 8 <sup>th</sup> Avenue Temple, PA 19560	Phone: (610) 921-5717
Secretary	Stan Raugh	trex@bigplanet.com	153 Claudy Lane New Hyde Park, NY 11040	Phone: (516) 849-6604 Fax: (516) 358-7554
Editor	Cemil Betanov	CemilB@optonline.net		
Board Member	Vacant (3 positions)			
Advertising Director	Vacant			

## EFOCC Member Post Submission Form

Every EFOCC member is entitled to three free 35 word listings per year in the EFOCC Member Post. To use your free listing, please complete this form, and mail it to the Editor. If you wish, you can also e-mail your request to the Editor.

<hr/> <hr/>
-------------

## Help With Members' New Projects Submission Form

If you would like a free listing in **The EFO Collector** to help you with a new EFO project, please complete this form and mail it to the Editor. If you wish, you can also e-mail your request to the Editor.

I am looking for

<hr/>
-------

Name, address, e-mail:

<hr/>
-------

Please make membership renewal checks to "EFO Collectors' Club" and mail to Treasurer.

Advertising for the EFO Collector will be accepted at the following rates:

Full page, camera-ready copy	\$30.00
Half page, camera-ready copy	\$16.00
Quarter page, camera-ready copy	\$9.00
Address page, 4i x 4i, camera ready copy	\$16.00
Full page, requires composition	\$60.00
Half page, requires composition	\$32.00
Quarter page, requires composition	\$18.00
Address page, 4i x 4i, requires composition	\$32.00
Classified ads, per word	\$0.06

First insertion must be fully prepaid. No discounts apply. The deadline for ad copy is the 15<sup>th</sup> of the month preceding the issue. Advertising, ad payments, and related inquiries should be directed to the Editor.

EFOCC members are entitled to three free 35-word (excluding address) classified EFO Member Post ads annually. Please send or e-mail these to the Editor.

## From Your Editor

Happy to present another issue with great variety, including an article by Member Gary Denis who proposes looking at EFOs in cancellations, as you can see on the cover and on pages 13 and 14. In addition to our regulars, we continue to show Member Hideo Yokota's exceptional exhibit, including, in this issue, what is my personal favorite page, the "elliptical" vignette shifts, on page 17.

Next issue, we will show the last EFO pages from Hideo's exhibit, and we will also start to show pages from an exhibit by a non-member, Rev. Edward Mullowney, whose exhibit on Vatican City's "400<sup>th</sup> Anniversary of the Council of Trent" set won the a Gold medal as well as EFOCC's First Place ribbon at the York County Stamp Show. I have to admit that this set is also a favorite of mine, being proud owner a number of errors from that set. Special thanks to John Hufnagel for setting up the connection with Rev. Mullowney, who kindly and quickly sent in a copy of his exhibit.

I am in the process of embarking on another project of interest to the EFOCC: I will, over time, post on the Internet the old issues of *The EFO Collector*. I expect to start with some trials within the next few weeks. For the time being, it will be at the same location where we show the Auction pictures, <http://www.betanov.com/TheEFOCollector>. Eventually, we will move to a "better" address. This is not as simple as just scanning the pages and posting them as pictures, because you want to provide some data that will allow search engines, such as Google, Yahoo, MSN Search, etc., to pick up and index the information. Our goal is twofold: First, provide the best EFO reference information site available on the Internet and, second, have a site that advertises the EFOCC and its services. John Hotchner, as usual, has offered to assist by providing old issues for scanning. He has a complete collection of *The EFO Collector*! If you have a good scanner and can help out with the scanning part, I would appreciate your assistance. Please contact me, by e-mail or by phone.

Finally, two more items: First, please be sure to complete and mail to John Hotchner the survey he presents on page 24, so we can have a good sampling of membership data and preferences. Second, *please consider volunteering* for a leadership position in our Club, as detailed by Jim McDevitt in his President's and Auction Director's Report on page 25.

Cemil



## To The Editor

### More on Design Change

In the January-March issue, Ed Silver had a short article on Design Change EFO Stamps. At the conclusion of the article, he asked, "Are there examples of 'change of design' stamps in your collection that you can share with fellow EFOCC members?"

Here are two of my favorites. The first, "Aging Together" shows examples, from the top, center and bottom of the pane. With the selvage intact, the top stamp has "Aging" twice, the center stamp has it once but misplaced, while it is missing entirely from the bottom stamp.



The second example is the 20c Aging Together trio with the name on both sides, name on wrong side and name missing. The double name stamp is 26 mm wide as opposed to the normal 23 mm.

Marlin B. Stewart  
Elmira, NY



# COLOR SHIFTS



Complimentary Color Catalog

1-866-715-5385

toll-free

Also available on the Web at:

[freakystamps.com](http://freakystamps.com)



# Major Canadian Booklet Errors

## Joseph Monteiro

In my previous article in *The EFO Collector*, major errors from Canadian stamp booklets were examined. In this article, I will examine errors resulting from miscut Canadian stamp booklets. Initially, these errors were the first to appear from Canadian booklets as major errors were not found. Miscut booklet stamp errors at least initially did not create major errors on the stamps. They typically resulted in the panes being improperly cut. Later, some of the miscuts resulted in stamps being partially imperforate. Fully imperforate errors from booklets have only been found recently as a result of imperforate panes being used in booklets or as a result of the failure of the cutting machine to make die cuts on the self-adhesive booklet stamps. In the first case, however, the fully imperforate stamps have nothing to do with the booklet being miscut.

### Types of Miscut Booklet With Different Panes or Inappropriate Die Cut

#### *A. Booklets With Panes Of The Same Stamp Perforated On All Sides With The Same Label In Each Column Or Row Or No Label*

Booklets that contain such panes result in two basic types of miscuts:

1. Booklets cut in the inappropriate place (i.e. shifted to the right or left);
2. Booklets that have been cut with a shift (i.e. shifted a column (s) or row (s)).

#### *B. Booklets With Panes Of The Same Or Different Stamp Perforated On All Sides With Different Labels (Or Mixture Of Stamp And Label) Also Perforated On All Sides*

Booklets that contain such panes result in two basic types of miscuts:

1. Booklets cut in the inappropriate place (i.e. shifted to the right or left);
2. Booklets that have been cut with a shift (i.e. shifted a column (s) or row (s)).

#### *C. Booklets With Panes Of The Same Stamp Not Perforated On The Outer Edges Of The Booklet Stamp With Same Label In Each Column Or Row Or No Labels*

Booklets that contain such panes result in two basic types of miscuts:

1. Booklets cut in the inappropriate place (i.e. shifted to the right or left);
2. Booklets that have been cut with a shift (i.e. shifted a column (s) or row (s)).

#### *D. Booklets With Panes Of The Same Or Different Stamps Not Perforated On The Outer Edges Of The Booklet Stamp With Different Labels (Or Mixture Of Stamp And Label)*

Booklets that contain such panes result in two basic types of miscuts:

1. Booklets cut in the inappropriate place (i.e. shifted to the right or left);
2. Booklets that have been cut with a shift (i.e. shifted a column (s) or row(s)).

#### *E. Die-Cut Booklets*

Booklets with self-adhesive stamps result in four basic types of errors:

1. Die cut missing;
2. Die cut missing partially;
3. Die cut shifted;
4. Die cut inverted.

### Effects of Miscuts On Booklets

The effect of the above miscuts has an effect on the panes of stamps in the booklet and the booklet covers.

#### *A. Booklets With Panes Of The Same Stamp Perforated On All Sides With The Same Label In Each Column Or Row Or No Label*

Booklets that contain such panes result in two basic types of errors:

1. Booklets with panes with parts of stamp cut off having straight edges. The straight edge could be at a slant and the slant could have a further effect on the design;
2. Booklets with different size panes.

#### *B. Booklets With Panes Of The Same Or Different Stamp Perforated On All Sides With Different Labels (Or Mixture Of Stamp And Label) Also Perforated On All Sides*

Booklets that contain such panes result in three basic types of errors:

1. Booklets with panes with parts of stamp cut off having straight edges. The straight edge could be at a slant which could have a further effect on the design;
2. Booklets with different size panes;
3. Booklet panes with stamps and labels in the wrong column or rows.

#### *C. Booklets With Panes Of The Same Stamp Not Perforated On The Outer Edges Of The Booklet Stamp With Same Label In Each Column Or Row Or No Labels*

Booklets that contain such panes result in three basic types of errors:

1. Booklet panes with parts of stamp cut off having straight edges. This could be at a slant and the slant could have a further effect on the design;
2. Booklets with different size panes containing partially imperforate stamps (or stamp and label or label and label) between two columns or rows generally (could be more).

Booklets that contain such panes result in three basic types of errors:

1. Booklets with panes with parts of stamp cut off having straight edges. This could be at a slant and the slant could have a further effect on the design.
2. Booklets with stamps and labels in the wrong column or rows;
3. Booklets with different size panes containing partially imperforate stamps (or stamp and label or label and label) between two columns or rows generally (could be more).

#### E. Die-Cut Booklets

Booklets that contain such panes result in three basic types of errors:

1. Fully imperforate errors;
2. Partially imperforate stamps;
3. Misperforated stamps or improperly cut stamps;
4. Inverted shape of the cut.

It is worthwhile indicating that if the pane has a selvage and has an inscription, the inscription will appear on the wrong side if the booklet is miscut. In other words, it has the same effect as a label with different messages on the labels.

The miscut booklets that have been found so far with Canadian stamps all fall into the above categories, and are discussed below.

### Miscut Booklets

#### *Queen Elizabeth II - Cameo Definitives - Third Series*

The first booklet error found was of Type D1, it was from the Cameo definitive series. It was the Cameo 25¢ booklet (BK 53 - 25¢ - ((5x1¢ + 1 label) + (5x4¢ + 1 label))). The booklet was cut with a slant, right to left (Figures 1-3). As a result of the booklet being incorrectly guillotined, approximately 5 mm of the stamp from the bottom row second column is missing on the right. The vertical inscription on the right of the stamp in the last row is missing, in addition the last 'A' from 'CANADA' is missing. The left side of the booklet has the missing part on the left [1]. This major variety is educational for three main reasons. It provides information on: 1) how the booklets were printed; 2) how the booklets were perforated; and 3) how the booklets were manufactured.

The second booklet error, shown in Figure 4, was also of Type D1 (or may be classified as Type D3), it was also from the same Cameo definitive series. It was also BK 53. Unlike the previous booklet, this booklet was cut straight but the extent of the shift is much more severe. The booklet was incorrectly guillotined, approximately 13 mm to the right. As a result, the left column of stamps in the booklet has more than half of the stamps missing including the value. The missing parts appears on the right column of the stamps. This creates partially imperforate stamps with the middle column and the right column of stamps cut off [2].

Similar educational and analytical implications can be drawn as that indicated in the preceding paragraph.



**Figure 1:** BK53 1¢ value with slanted cut.



**Figure 2:** BK53 4¢ value with slanted cut.



**Figure 3:** BK53 cover with slanted cut.



**Figure 4:** BK53 4¢ value with cut shifted horizontally.

#### *Queen Elizabeth II - Centennial Definitives*

The third miscut error on a booklet was of Type B3, it was on the \$1.50 booklet with the 6¢ orange stamp from the Centennial series. The 6¢ (orange) pane of 25 stamps (i.e. the \$1.50 booklet) was found miscut. As a result, the label on the columns of the stamp appear misplaced. The label with messages normally are found on two of the consecutive three columns of stamps at the top of the left side of the pane (Figure 5). That is, on the third column, the stamp appears in the first row and on the first two columns a message appears on the first two positions in the first row. In the booklet with the error, the two messages appear on the first and third column in the first row rather than on the first and second column [3]. Only two such booklets are known to exist. The booklets were printed by BABN on off-white paper with dextrin gum, and are non-tagged with a perforation of 10.

#### *Parliament View Booklet Series*

The 50¢ booklet BK 88 (with 1x34¢ + 3x2¢ + 2x5¢) was the fourth incorrectly cut booklet, resulting in Type



Figure 5: Centennial definitives, type B3 – misplaced labels.

C1. The left side of the booklet was cut off so that the value does not appear on the column of stamps on the left [4]. The booklet was incorrectly guillotined approximately 7 mm to the right (Figure 6). This variety is educational for three main areas on which it provides information:

1. How the booklets were printed;
2. How the booklets were perforated; and
3. How the booklets were manufactured.

First, the booklets were printed in a sheet format such that the stamps shown in the booklet were printed consecutively. This is apparent from the illustration which

shows part of the first column cut off on the left side appearing on the right side of the booklet.

Second, all the horizontal perforation in each row of the sheet were perforated, however the perforator only applied the vertical perforation after each consecutive column of stamps. This is apparent because all the horizontal perforation appear throughout the miscut booklet however the vertical perforation do not appear between the complete column of stamps and part of the additional column of stamps that appear on the right as a result of the incorrect strike of the guillotine.

Third, the panes were affixed in the booklet covers and then guillotined. As a result, the booklet covers were also incorrectly cut with the stamps. The front of the cover was unfortunately not illustrated. If it were, it would provide further information on how the covers were printed. Whether it showed the picture of the same ornamental detail of the Parliament Buildings or one of the other nine ornamental pictures is not known.

### Queen Elizabeth II - Karsh Definitives

The \$3.80 booklet BK 102 with (10x38¢ + 2 labels) was the fifth booklet found miscut, resulting in Type D3 and Type D2. The result of the miscut are partially imperforate errors, with the vertical perforations missing between a pair of 38¢ Karsh stamps in the second and third rows. In addition, since there are two messages in the top row of stamps the order of which becomes reversed. Instead of having a stamp, message and



Figure 6: BK88 type C1.



Figure 7: Miscut BK102.

another message, we have a message, stamp and message. Since the selvage of the pane has different inscriptions under the labels the effect is the same reversal as for the messages. The *Saskatoon Stamp Centre Catalogue* describes this error as: “1164ii - 38¢ Queen Booklet Pane of 10 plus 2 labels IMPERFORATE VERTICALLY between 2<sup>nd</sup> and 3<sup>rd</sup> column. From an improperly guillotined booklet. RARE! Perf 13 x 13.5. VF NH. CS \$5000” [5]. Instead of the booklet being guillotined before the first stamp and after the second message, it was guillotined before the second message and after the first message. This miscut booklet is instructive for the following reasons.

First, the miscut booklet produced perforation on the outside of the stamps in the booklet which would normally have straight edges.

Second, the sheets were perforated horizontally throughout but vertically only a skip was made after every column of stamps were perforated on both sides.

### Flag Definitive Booklets

Three booklets in the Flag series, BK 153, BK 154, and BK 236, have attracted particular attention as a result of errors. The first and second because the booklets were miscut. The third because the die-cuts in the booklets were not correctly placed. These major errors will be described in detail.

#### The \$4.30 Booklet (BK 153)

BK153 (10x43¢) was found miscut, resulting in Type C1 error. Two miscut booklets that were cut in the form of a “V” and an upside down “V”, have attracted the greatest attention. Other miscut booklets were also found which have attracted less philatelic attention as they can be made with a paper cutter. The booklet cut in the shape of a “V” has part of the stamps in the third and fourth columns cut off at the top and has the missing portion appearing at the bottom. As a result, the row at the bottom has parts of the missing stamp from the stamp pane from which they were cut. Since the bottom is normally cut with a straight edge, the booklet has particular philatelic interest only to the extent that parts of the bottom pairs of stamps are imperforate. The booklet cut in the shape of an upside down “V” has parts of the stamps in the top row cut off and has the missing portion appearing at the bottom. As a result, the row at the bottom has parts of the missing stamps. This booklet like the predecessor has particular philatelic interest only to the extent that parts of the bottom pairs of stamps are imperforate. The upside down “V” cut is much more pronounced as it leaves a greater part of the row of stamps imperforate [6]. This is shown in the illustration.

The miscut booklets are educational. First, the perforator only perforated the pane after every alternative row. Second, the panes were attached to the booklet covers before they were guillotined. Third, the sheet of stamps in



Figure 8: BK153 outside front and back of cover.



Figure 9: BK153 outside front and back of cover.



Figure 10: BK153 inside.



Figure 11: BK153 inside.



Figure 12: BK153 upside down ‘V’.

the pane must have been folded on the inside after the third column of stamps where it peaks when attached to the booklet and then cut to produce the “V” shape with a single straight guillotine cut. This becomes evident because the covers were given one slanting cut with constant slope. Such a shape would have been impossible with one slanting cut of the guillotine if the sheet inside was not folded. Fourth, such a shape is invariant to the manner in. In other words, it could have been folded front side or back side. Fifth, the booklet covers were printed sequentially and cut with the pane attached to it. Unfortunately, information on the upside down ‘V’ is not available to enable one to make any further inferences.

#### *The \$10.75 Booklet (BK 154)*

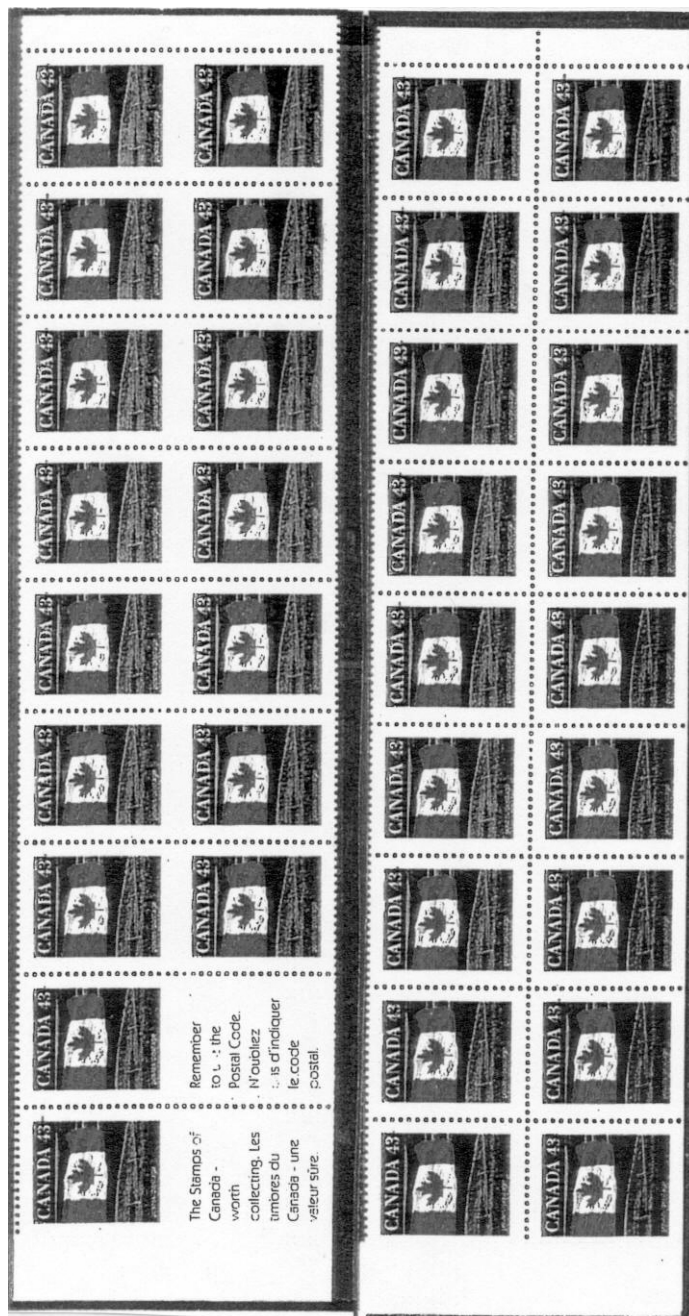
BK 154 (25x43¢ + 2 labels) was found miscut, resulting in Type D3 and Type D2 errors. Instead of having the normal three rows of stamps it only has two rows being improperly cut. As a result it created horizontal partially imperforate stamps between vertical pairs. It is worthwhile noting that the outer edges of the imperforate stamps in the booklet have perforations, which is not present on the stamps from normal booklets. Two of the vertical pairs have messages. One of the messages is “The stamps of Canada - worth collecting. Les timbres du Canada - une valeur sûre.” The other message is “Remember to use the Postal Code. N’oubliez pas d’indiquer le code postal.”

This particular error arose because the booklet was guillotined wrongly. Instead of being guillotined after three rows, beginning at the top just above the messages, it was guillotined just below the message in booklets with two rows. In other words, instead of being guillotined to make a booklet of 25 stamps and 2 labels, it was guillotined to make a booklet of 16 stamps and 2 labels. Further, the messages appear at the bottom rather than at the top [7].

Each error booklet contains 16 stamps and two messages. As a result, there are seven pairs with the partially imperforate vertical error and two other imperforate vertical pairs one stamp of which is a message. Four booklets with these partially imperforate stamps were discovered in Saskatchewan. Based on the above discovery, 28 partially imperforate pairs and 8 partially imperforate pairs with a message should exist. This booklet is printed by Ashton-Potter Ltd. It is also educational as it reveals that the sheets were perforated vertically throughout but horizontally only after a skip was made after every row of stamps were perforated on both sides. It also indicates that the pane of stamps was attached to the booklet before being guillotined. This is shown in the illustration.

#### *The \$4.70 Booklet (BK 236)*

BK 236 (10x47¢ + 2 labels) with the self-adhesive 47¢ stamps was discovered with the die cut lined misplaced, resulting in Type E3 error. So far, two varieties of such booklets have been reported:



**Figure 13:** Miscut BK154, it should have been cut to make a booklet of 25 stamps and 2 labels. The adjoining booklet would have looked as the one shown on the right.

1. The die-cut lines are shifted to the right and up; and
2. The die-cut lines are shifted to the left.

The misplacement in the second case is not constant but found with varying degrees of shifts. Other varieties of misplaced die-cut errors of the 47¢ booklets are believed to exist [8][9].

In the first variety (Figure 14), the die-cut lines are shifted to the right and to the top. As a result, this shift not only results in short stamps in the top row and tall stamps in the bottom row but also tagging errors. The stamps in the top row have two tags: one at the top, and one at the right-centre. The bottom tag is missing together with the left tag on stamps in the extreme right, however, on the





Figure 14: BK236 variety 1.



Figure 15: BK236 variety 2.

other stamps where the tag appears to the right-centre it is twice the width. The stamps in the bottom row have three tags: one on the right-centre, one at the bottom, and one about quarter of the length from the top. The tag on the left is missing. This should be evident from the illustration as the tags on the normal stamps appear in the white margins. It is also worthwhile noting that the size of the tags are twice the width in some cases - vertical and top horizontal (i.e., in columns after the extreme right).

In the second variety (Figure 15), the vertical die-cut lines are shifted to the left. As a result, this shift not only results in stamps of different widths with the value "47" missing on the extreme left pairs of the two panes in the columns but also tagging errors. The stamps in the rows have two tags: three tags in the form of an "I" in the middle of the stamps with the centre vertical tag double the width of the horizontal tag; three tags in the form of a "[ " the vertical tag is double the width of the horizontal half tags. These tagging errors should be evident from the illustration above.

It is worthwhile noting that the die-cut also includes the dashed line in the middle of the booklet which allows it to be folded. As a result, this dashed line is also shifted. In the case of the first type of miscut booklet, it is shifted to the right; and in the case of the second type of miscut booklets, it is shifted to the left and passes through the stamp in the top pane. Three other types of booklet errors were offered for sale by John Talman which show progressively less dramatic shifts of the die cut and are accordingly estimated at progressively lower prices.

#### The \$5 Booklet (BK 302Aa)

The \$5.00 BK 302Aa (10x50¢) was found miscut as was recently reported in *Corgi Times* (November-December 2005). This booklet was issued in December 2004 in response to the increase in the postal rates. So far two varieties of this booklet have been found:

1. On C paper with the die-cut lines shifted 2-3mm to the right and to the top (Figure 16); and
2. On F paper with the die-cut lines shifted 4 mm to the left (Figure 17).



Figure 16: BK302Aa variety 1.



Figure 17: BK302Aa variety 2.

#### The \$8.40 Christmas Booklet (BK302a)

BK 302a, issued in 2004 (6x\$1.40) with the self-adhesive \$1.40 stamps, was discovered with simulated die cut perforation line misplaced, resulting in Type E3 error. As a result of the shift or misplacement of the die-cut, the simulated horizontal perforation appear in the wrong position. As indicated by *Corgi Times* "The die cut is shifted 7 mm upwards. The result is the text and denomination appears at the top of four of the stamps and is missing from two of the others" [10]. The top two stamps have the denominations missing at the bottom and the stamps include the selvage with the colour codings. In addition to the above observations, since the stamps are tagged on all four sides, the first row of stamps should also have the tagging missing at the bottom.

#### Conclusion

In sum, miscut booklet results in a variety of errors. Some of these errors are classified as varieties and some as major errors. The types of errors that result are determined by the types of panes with which these booklets are manufactured with and whether they are die-cut or not and the severity of the miscut. Since panes are typically inserted into the booklet before being cut, the miscut also results in the booklet cover being miscut. As a consequence, usually when one miscut booklet is found there are also others likely to be miscut. As indicated from the above review, the miscut is instructive as it also provides other pieces of information about the printing of these booklets that is usually not made known to philatelists by the manufacturers of these booklets. It thereby enables one to build upon our knowledge and to place the study of booklets on a firmer educational ground.





Figure 18: BK302a Type E3 error.

An attempt was also made to categorize various types of panes inserted into booklets and the types of errors that could result if a miscut occurred. This should enable one to determine the type of variety or error that could result even without seeing a picture of the actual error. It is usually, instructive to classify and categorize types of booklets and then inquire what would happen if a miscut or something went wrong. It should provide a sound educational approach to the hobby which will ultimately be intellectually satisfying and more rewarding.

## Bibliography

[1]	Arn, John: <i>Exhibit on Canada Cameo Definitive series</i> .
[2]	Darnell: <i>Stamps of Canada Catalogue</i> , 1994, p. 286.
[3]	McCann, Bill: <i>Standard Catalogue of Canadian Booklet Stamps</i> , 1996, p. 42.
[4]	R. Maresch & Son: <i>Auction Sale 290-2</i> , November 15, 1994, p. 36.
[5]	Saskatoon Stamp Centre: <i>Catalogue #174</i> , p. 38.
[6]	Saskatoon Stamp Centre: <i>Catalogue #196</i> , p. 94/108.
[7]	Ian Kimmerly Stamp Auctions: <i>Public Auction No. 51</i> , June 15, 1994, p. 6.
[8]	Ian Kimmerly, <i>Advertising Flier "Some Summer Specials From Stocks"</i> , July 2001.
[9]	John Talman Auctions: <i>Public Stamp and Coin Auction No. 228-229</i> , August 1, 2001.
[10]	"2004 Santa in a Train Christmas Booklet Die Cut Shift, <i>Corgi Times</i> , November- December 2005, Vol. XIV, No. 3, p. 42
[11]	"50¢ Flag Over ... Mistakes," <i>Corgi Times</i> , Nov-Dec 2005, p. 46.

## Freak vs. Error, Minor Error vs. Major Error

Stan Goldfarb

*Below is an article I sent in to the APS Journal in reference to an ongoing difference of opinion that I thought would also be appropriate for us to read.*

I've watched the difference of opinion on this for over thirty years and it's always struck me as ridiculous. Let's talk about how the word "freak" originated. Carl P Rueth Jr. was a senior editor at Linn's in the forties and/or fifties and when questions concerning perf shifts, color (vignette) shifts gutters, smears, etc stamps were shown to him, he would say "it's just a freak" (not an error).

I started out as a collector and then became a dealer and immediately knew the term "freak" had no business as a stamp term for any kind of stamp. It's simply demeaning and why should Rueth's term stick when he didn't like them. I have used the terms major and minor error and will never change on this. I hoped the term "freak" would simply fade out but it hasn't.

Now to the infamous color shift plate block shown on page 594 in the July 2005 issue of the American Philatelist. It is a blue color shift and while only 1/16<sup>th</sup> of an inch down, gives a good effect. Its value would be in the \$50-75 range although it could go for more because it is a space issue. Below are eight examples of perf and color shift plate blocks (crowded together so they could take up only one page) on this issue from my collection including a third

copy of the plate #33155 color shift you illustrated (upper right) (I should tell you that my collection has approximately 2,000 minor plate block and strip EFOs plus some majors illustrating types of major errors formed over thirtysome years).

Why so many different minor errors (there are several major ones on this issue also)? Between the 8 and 15 cent issues the bureau was experimenting with different printing presses. It took time to fine tune the new presses and EFO collectors were treated to some wonderful varieties most of which exist in quantities of 200 or less. Now, very, very few come out.

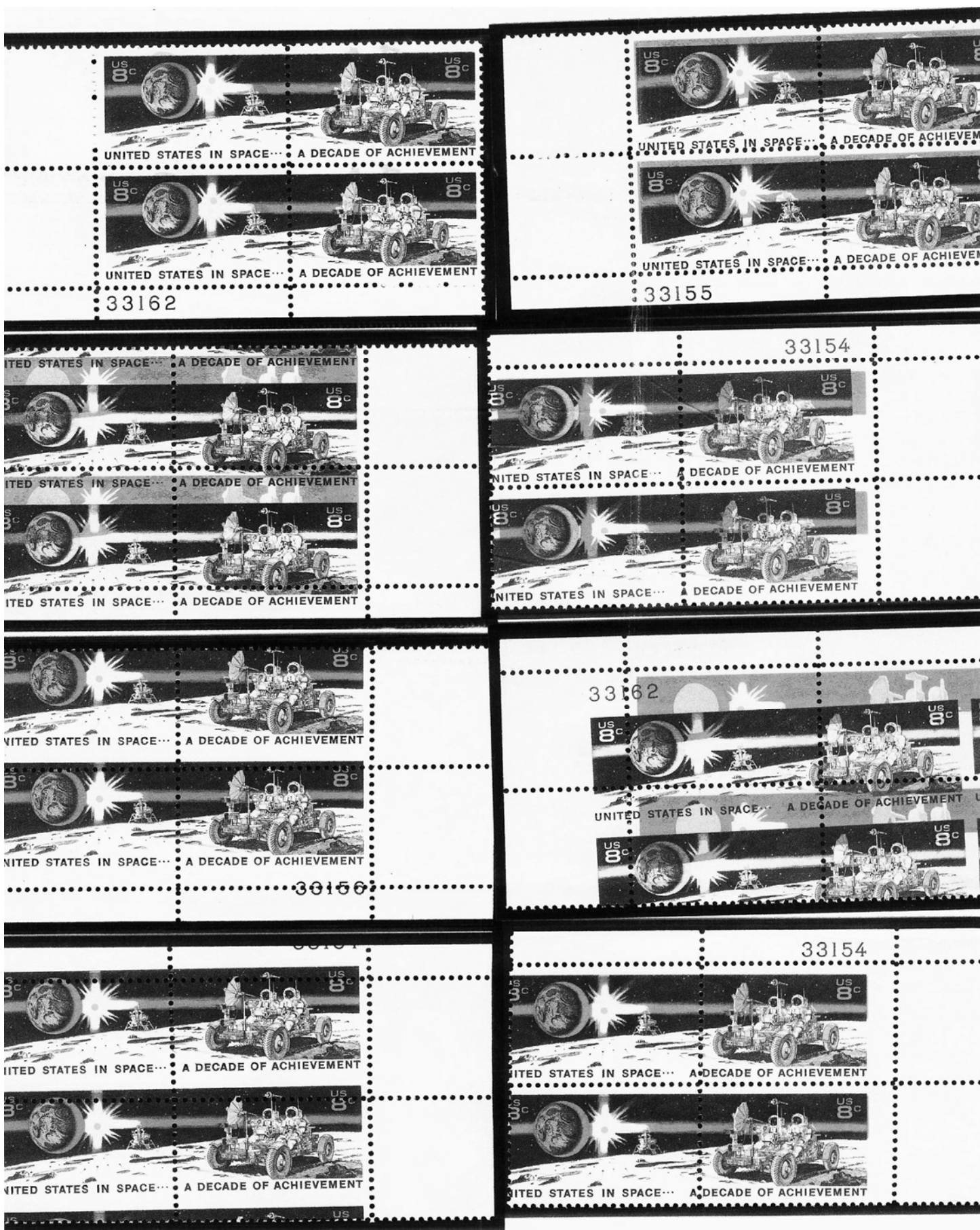
Lastly, when a person who has contributed many years to the hobby like Clyde Jennings demeans minor errors by saying "a freak is pennies" it is far worse than being a "purist". Moreover, he and his son Jay (a very friendly guy) have bought minor errors on postage dues from me for as much as ten dollars or more for a single. That is not "pennies" and we're only talking singles not plate blocks that have a per stamp premium.

I collect for fun and while I have no interest in many aspects of stamp collecting, I don't criticize them. Stamp collecting has enough problems attracting new collectors.

By the way Clyde, numismatics is fun also.



Golfar1@ix.netcom.com



# A Few Sleepy Hollow First Day Cover Oddities

Gary Denis

GaryD@olg.com

The majority of the articles published in *The EFO Collector* deal mainly with EFOs related to stamp production, such as color shifts, misperfs, or other anomalies found on *postage stamps*. As a First Day Cover collector, I have several *postmark* oddities included in my *Legend of Sleepy Hollow* collection, which I would like to share with the EFOCC membership. Can these be considered EFOs as well?

A normal First Day of Issue (FDOI) postmark typically includes a circular date stamp (CDS), which is the round portion that contains the name of the first day city and the date the stamp was issued. To the right of the CDS you will usually find four horizontal “killer” bars, two above and two below, with the text “first day of issue” in the middle. Many other more elaborate FDOI postmark designs exist, but this type is the most common. FDOI postmarks may be applied by machine or by hand, both usually having the same general design, with the hand cancel being slightly larger.

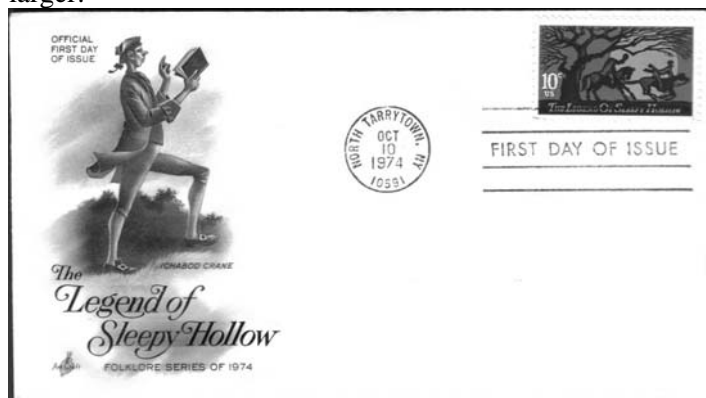


Figure 1: Legend of Sleepy Hollow FDC.

The cover illustrated in Figure 1 is a normal First Day Cover (FDC) for the *Legend of Sleepy Hollow* stamp (Scott 1548), which was issued on October 10, 1974, in North Tarrytown, NY. This is a fairly common cover, featuring a machine cancelled FDOI postmark, and a cachet printed by Arcraft. It is shown here to provide a basis of comparison for the postmark oddities that follow.

On the cover shown in Figure 2, featuring a different Arcraft cachet design, the postmark is shifted approximately 1¼ inch to the left, with the circular date stamp landing within the cachet design. Had the postmark been shifted another quarter-inch to the left, it may have missed the Sleepy Hollow stamp altogether. This was probably caused by a slight misfeed of the envelope into the canceling machine.

The First Day postmark in Figure 3 is missing the top killer bar and the upper portion of the CDS. The cancelling machine was apparently running low on ink, and some



Figure 2: Postmark shifted to the left.



Figure 3: Missing top killer bar and upper portion of CDS.

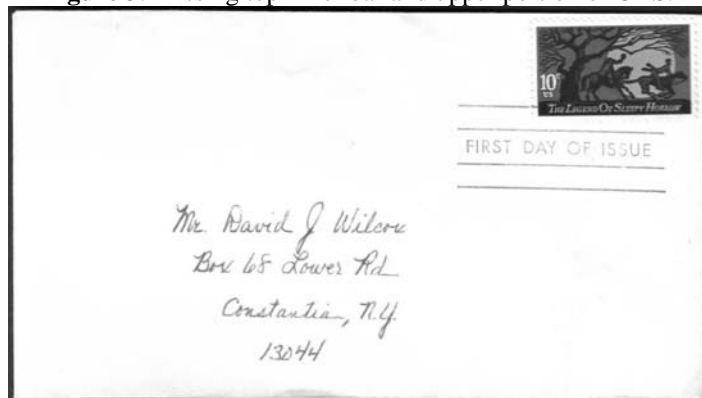


Figure 4: Missing CDS altogether.

covers were processed before the postal clerk refilled it. It is not visible in the illustration, but if the envelope is examined from an angle, an “albino” impression of the missing top bar can be seen across the stamp.

The uncacheted cover pictured in Figure 4 is totally missing the CDS, leaving only the killer bars and the “first day of issue” marking. This was probably caused by a different type of misfeed into the cancellation machine. While normally only one envelope would be fed through at a time, in this case the machine possibly “grabbed” two envelopes, with one overlapping the other. The bars were applied to the pictured envelope, and the CDS portion probably landed on the envelope which was fed through on top of it.

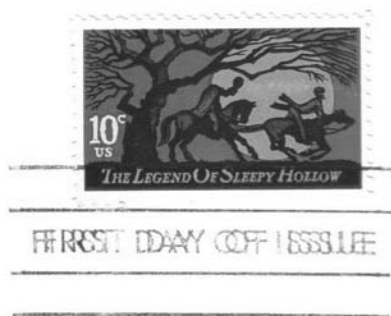


Figure 5: Double impression of CDS.

The First Day Cover bearing the postmark shown in Figure 5 was somehow fed through the cancellation machine twice, and ended up with two FDOI cancellations side by side. The two postmarks line up almost perfectly vertically, but horizontally, one is shifted about one-sixteenth of an inch to the left, giving it a doubled appearance.

The “oddity” on the last FDC (Figure 6) is a little harder to see. This is a Colorano Silk cacheted souvenir card which bears a hand cancel. In this postmark, the CDS portion is not aligned correctly with the killer bars; it appears to be positioned slightly higher than normal. The top of the CDS extends further above the top bar than the bottom of the CDS does from the bottom bar, giving it an asymmetrical appearance. Also, the CDS appears to be slightly rotated to the right, making the date look slanted with respect to the “first day of issue” text and killer bars. This is probably the result of a poorly-made hand canceller; or maybe it was dropped on the floor at some point during the process of hand-cancelling First Day Covers?



Figure 7: Double impression of CDS.

Figure 7 shows a close-up of this hand cancel oddity. I have added lines parallel to the killer bars to make it easier to see how the CDS is off-center and rotated slightly from the rest of the postmark. Notice that it is slightly oblong as well, rather than perfectly round.

Other types of First Day of Issue postmark EFOs exist, including such things as misspelled words, incorrect year dates, inverted circular date stamps, and even some with a FDOI cancel intended for a totally different stamp; I will show a few of those in a future article. I have yet to find any of these other types of oddities on *Sleepy Hollow* covers, but I’ll continue to keep my eyes open for them...

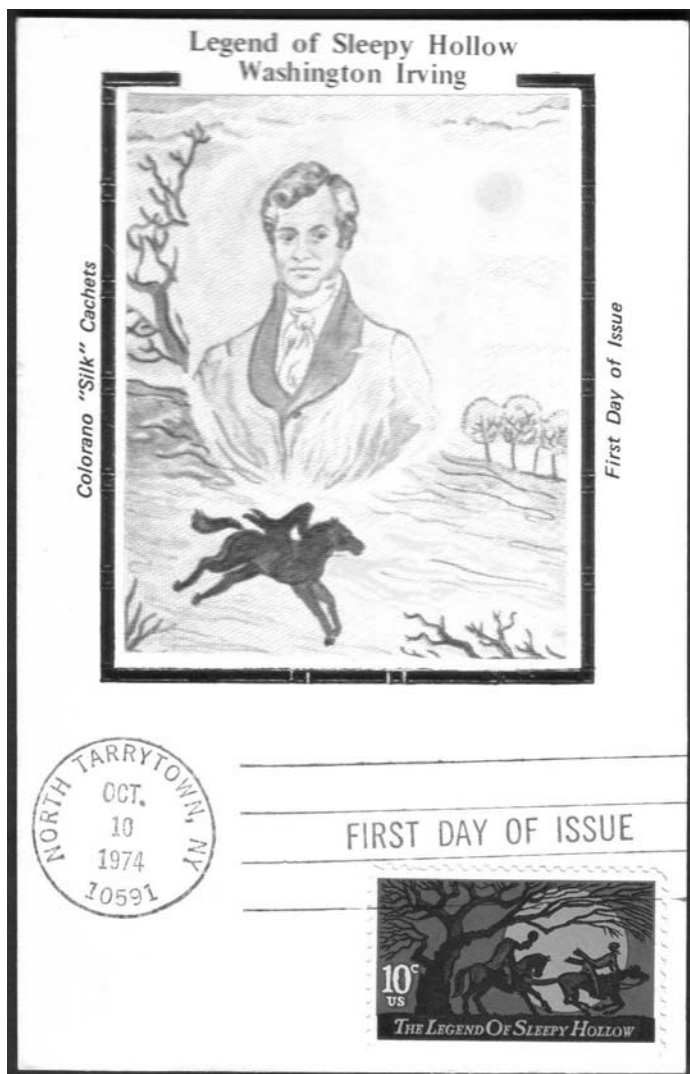


Figure 6: Double impression of CDS.

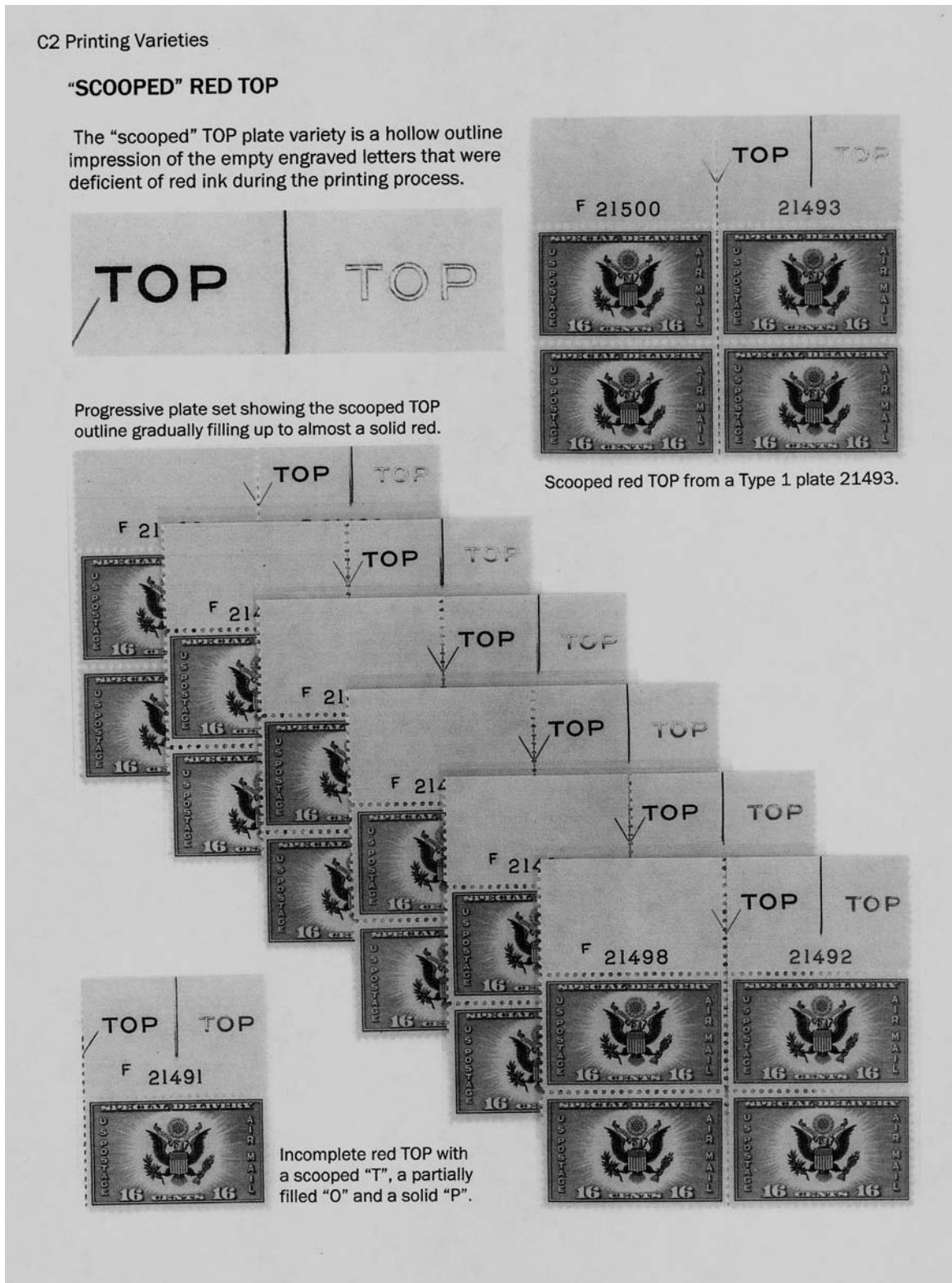


From the collection of Member Joseph Chervenyak

# Pages From My Exhibit

## Hideo R. Yokota

**Editor's Note:** In this issue, we continue to show EFO related pages from member Hideo R. Yokota's exhibit titled *U.S. Air Mail Special Delivery Issues of 1934-1936*. This exhibit won a Gold medal in the latest exhibit it entered, TEXPEX 2006, along with the APS 1900-1904 Medal of Excellence. Hideo will enter this exhibit next at the Rocky Mountain Stamp Show and at the Minnesota Stamp Exposition. We wish him much success...





# HIGH VIGNETTE SHIFTS



Rows 1 and 2, positions 1–5, 6–10.

Three position pieces that came from a Type 4 sheet containing an upward vignette shift on the left side margin.



Row 9, positions 41–44.

Row 10, positions 46–49.



## VIGNETTE SHIFTS

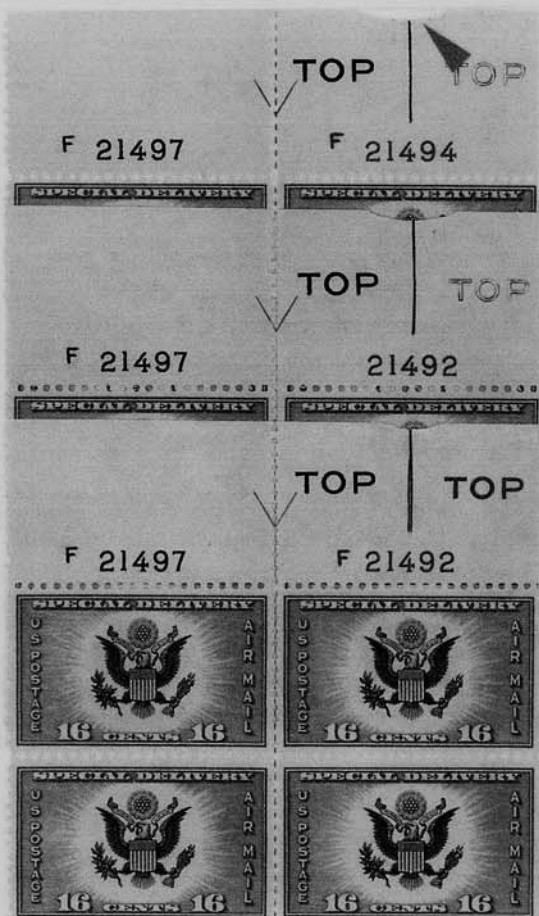


# PAPER FOLDS

Perforated paper fold corner.

Type 4 plate strip with a selvage paper fold that was overprinted with the blue "TOP" and a portion of the blue registration marker. The fold was not corrected for the perforation process.

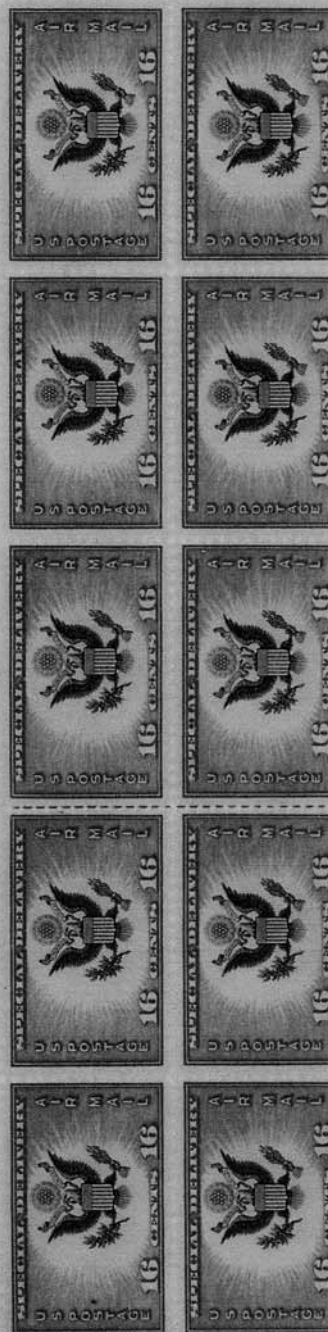
Three identical minor folded selvage problems from the Type 1 blue printing of plate F21497.



TOP

21491

F 21500



## PRE-PRINTING PAPER CREASES



Two examples showing a pre-printing "double" paper crease that was spread out after it was used for the postage.



Upper and lower pieces of a corner block of 12 with a paper crease that was spread out before the perforation process.



Crease spread out before perforation.



Crease spread out after perforation.

## PRIVATE PERFORATIONS



1935 special printing imperforated stamp that was privately gummed and perforated gauge "14" by an unknown source.



\* June 3, 1936—34c franking paid the 16c AMSD service with the 15c registry fee and the 3c return receipt requested in Olympia, Washington—1 of 2 known 16c Farley AMSD "perforated 14" covers.

# My Favourite EFO

## Joel Finds Alice Or Why It Pays To Walk Around With a Stamp Catalogue



Joel Radin, EFOCC member and dealer, was profiled three years ago by Stan Raugh in his column "Meeting Your Fellow Members." In that column, Joel indicated that "amazingly, in [his] career he has discovered only a few minor freaks, nothing major." Well, we are happy to report that this has changed. He e-mailed your Editor recently with the scan shown to the left and the following:

*I purchased the Alice Hamilton sheet from a man I met who noticed that I was carrying a stamp catalogue and must therefore be a stamp collector. He said that he had something in which I might be interested, a sheet of stamps that he had purchased at a local post office. After setting a time to meet him and then examining the sheet, I, of course, made the purchase for the price he had set.*

*I think this is an exceptional find since I have never seen this Major Error before nor have I heard of it. Since it is only the last row that is affected, there are only 10 imperforated between pairs available.*

*I have not decided whether to sell the full sheet (then only one person would have it) or break it up so others can add this new EFO to their collections.*



## EFOCC Auction 103 Realizations

Lot #	Hammer	Lot #	Hammer	Lot #	Hammer	Lot #	Hammer	Lot #	Hammer	Lot #	Hammer	Lot #	Hammer
1	nb	16	\$11.00	31	nb	46	nb	61	nb	76	nb	91	\$7.00
2	\$7.00	17	\$7.00	32	\$17.00	47	nb	62	\$25.00	77	nb	92	\$15.00
3	nb	18	nb	33	\$15.00	48	nb	63	\$42.00	78	nb	93	\$10.00
4	\$9.50	19	nb	34	\$20.00	49	\$10.00	64	\$20.00	79	nb	94	\$15.00
5	\$6.00	20	\$30.00	35	\$27.00	50	nb	65	\$50.00	80	\$10.00	95	nb
6	\$5.00	21	\$2.00	36	\$25.00	51	\$14.00	66	\$9.00	81	nb	96	\$6.50
7	\$20.00	22	\$4.00	37	nb	52	nb	67	\$10.00	82	\$11.00	97	\$8.00
8	nb	23	\$4.00	38	nb	53	nb	68	\$7.00	83	\$10.00	98	\$8.00
9	\$12.00	24	\$20.00	39	nb	54	\$11.00	69	\$12.00	84	nb	99	\$52.00
10	\$7.50	25	\$6.00	40	nb	55	nb	70	\$8.50	85	nb	100	nb
11	\$10.00	26	\$11.00	41	\$26.00	56	\$17.00	71	\$10.00	86	\$20.00	101	\$52.00
12	\$8.00	27	\$25.00	42	\$17.00	57	\$5.00	72	nb	87	\$9.00	102	nb
13	nb	28	\$5.00	43	\$5.00	58	\$4.00	73	nb	88	\$15.00	103	\$12.00
14	\$13.00	29	nb	44	nb	59	nb	74	nb	89	nb		
15	\$8.00	30	\$35.00	45	nb	60	\$47.00	75	\$3.00	90	nb		

What Can You Expect From

## SCHIFF AUCTIONS

When You Consign  
Your U.S. or Worldwide  
Stamps, EFO's & Covers?

1. **YOUR COLLECTION** will be carefully examined, lotted and accurately described by our professionals.
2. **OUR WORLDWIDE CLIENTELE** developed over fifty-eight years, will competitively bid for your stamps and covers.
3. **YOU CAN SELECT** the auction dates best suited for your consignment.
4. **OUR EXTENSIVE ADVERTISING** in publications throughout the U.S., Europe & Asia will lure buyers for your properties.
5. **WE PROVIDE INSURANCE** by Lloyds of London as soon as your collection is delivered to us, or our bonded employee.
6. **WE PERSONALLY DISCUSS** your collection with you to advise how you can achieve the most financially rewarding results.
7. **OUR LOW COMPETITIVE COMMISSION RATES** make us partners to secure the best results.
8. **SEND A STAMPED SELF-ADDRESSED No. 10 size envelope** for our complimentary brochure titled "How to Auction Your Stamps and Covers."



### OVER 59 YEARS SERVING STAMP COLLECTORS

CONTACT US BY MAIL, TELEPHONE OR FAX, BEFORE SENDING STAMPS & COVERS.  
WE WILL TRAVEL FOR CONSIGNMENTS OF SPECIAL VALUE.  
WE ALSO PURCHASE OUTRIGHT.

#### AUCTION # 310 & Elite XXIV

June 14 & 15, 2006  
Knights of Columbus Hall  
Ridgefield Park, NJ

#### AUCTION # 311

September 6-7, 2006  
Knights of Columbus Hall  
Ridgefield Park, NJ  
Now Accepting Consignments



## JACQUES C. SCHIFF JR., INC.

195 Main St., Ridgefield Park, NJ 07660 USA  
Telephone: 201-641-5566 From NYC 212-662-2777 FAX: 201-641-5705  
Est. 1947 Licensed & Bonded Auctioneers





# Perf Orations: What Do We Know About Ourselves?

John M. Hotchner

jmhstamp@ix.netcom.com

“Know thyself.” reads an inscription at the Delphic Oracle, reported by Plutarch more than 2500 years ago; an admonition as useful today as then, and as applicable to groups as to individuals. Why? What we know about the EFOCC as a group, and about the wants, needs and preferences of the people who make up this group should guide the services we provide and inform writers for *The EFO Collector* of what would be most appreciated in our Journal.

Our most excellent editor has been good about asking for feedback, but that tends to prompt complaints, and he has thankfully received few. I’d like to see if we can get a broader response on a wider range of subjects. To make it easy, you will find on page 24 a one page questionnaire.

Please use it or a photocopy to help EFOCC to serve you better, and hopefully to grow. You need not provide your name, and you can certainly if you wish expand your answers to additional sheets of paper. Or you can answer on the Internet by email to the above address.

One more appeal: I would appreciate a Member volunteering to help with compiling the responses. I intend to provide an overview of the responses in a future issue of *The EFO Collector*, and a more thorough compilation will be provided to all EFOCC Members who participate, who request it.

*If there is something in EFO collecting that puzzles you, or you would like to see treated in this column, please write to the author John Hotchner at P.O. Box 1125, Falls Church, VA 22041-0125, or e-mail him at jmhstamp@ix.netcom.com.*

## Exhibiting EFOCC Members

<b>Eliot A. Landau</b> <u><i>Classic France: Postal History of the Ceres and Napoleon Issues 1849-1875</i></u> Open Competition Gold & American Philatelic Society Pre-1900 Medal of Excellence COLOPEX 2006 March 10-12, 2006	<b>Eliot A. Landau</b> <u><i>The Franklin Delano Roosevelt Memorial Series of 1945-46 and Its First Day Covers and Uses</i></u> Open Competition Gold & American Philatelic Society 1940-1980 Medal of Excellence COLOPEX 2006 March 10-12, 2006	<b>Douglas N. &amp; Nancy B. Clark</b> <u><i>The Massachusetts Island Counties Nantucket, Marthas Vineyard and the Elizabeth Islands Postal History Before 1890</i></u> Open Competition Gold & American Philatelic Society Pre-1900 Medal of Excellence & Garfield-Perry Best U.S. Exhibit & Northeast Multistate Postal History Best Multi-Frame Exhibit Garfield-Perry March Party 2006 March 24-26, 2006
<b>Ken Lawrence</b> <u><i>Innovative and Versatile: First Issue United States Envelopes 1853-1860</i></u> Single Frame Gold Garfield-Perry March Party 2006 March 24-26, 2006	<b>Hideo Yokota</b> <u><i>U.S. Airmail Special Delivery Issues of 1934-1936</i></u> Open Competition Gold & American Philatelic Society 1900-1940 Medal of Excellence TEXPEX 2006 April 7-9, 2006	<b>Jerome V. V. Kasper</b> <u><i>The Aerogrammes of Iceland</i></u> Open Competition Gold & Al Van Dahl Memorial Award – Best Scandinavia & United Postal Stationery Society Marcus White Medal – Best Postal Stationery WESTPEX 2006 April 28-30, 2006
<b>Thomas P. Myers</b> <u><i>British Airmail to Africa and Asia, 1931-1952</i></u> Open Competition Vermeil WESTPEX 2006 April 28-30, 2006	<b>Congratulations to all our exhibitor members!</b>	

## EFOCC Questionnaire

Please respond by July 15, 2006, to  
John Hotchner, PO Box 1125, Falls Church, VA 22041 or by e-mail to [jmhstamp@ix.netcom.com](mailto:jmhstamp@ix.netcom.com)

Name:		Age:
Mailing Address:	E-Mail:	How long an EFO Collector: _____ years
1. What EFO material do you collect? (Please be specific)		
2. What would you like to see <i>more of</i> in the EFOC?		
3. What would you like to see <i>less of</i> in the EFOC?		
4. Any other comments on the EFOC?		
5. Do you participate in the EFOCC Auction as a Buyer? _____ Seller? _____		
6. Any ideas for improving it?		
7. What would encourage you to participate in the Auction if you don't now?		
8. What methods do you use and recommend for obtaining material for an EFO collection?		
9. How do you store and/or display your collection?		
10. If you use a computer program to make pages, what is it?		
11. Do you inventory your collection? ___ Yes ___ No If yes, can you recommend a computer program that makes it easy?		
12. What services should EFOCC provide that it doesn't now?		
13. Recognizing that "many hands make light work," would you be willing to help with EFOCC projects/services?		
14. Would you be willing to serve in an EFOCC leadership position and be a candidate in our next election for officers for 2006-2008. ___ Yes ___ No		
15. Do you have an idea for an article in The EFO Collector?		
16. Can you write an article or a column for The EFO Collector?		
17. Do you want a copy of the full compilation of this survey? ___ Yes ___ No		
18. Any other comments?		

*Please use additional sheets of paper to expand your answers.*

# President's & Auction Director's Report

Jim McDevitt

EFOCC Auction #103 had sixty-five bids, thank you. Auction number 104 has been sent to the Editor and, hopefully will be available during Washington 2006. On note, this auction contains 16 donated lots with a catalog value over \$600. Sincere thanks and appreciation to Mr. Dave Phillips, Mr. Howard Frank, Mrs. Betsy Berry, and Dr. Singley for their very generous contributions to our Club.

Again and of note, many bids were won by bidders who had a fifty cent addition to each of their bids.

Mark your calendars that our next regional EFOCC meeting will be conducted during StampShow 2006, Chicago, Illinois in August. I will be staffing the American Society's Affiliate table during the show's run. Please stop by and peruse the Club's auction material.

Club officers are still awaiting feed-back on members from members able and willing expressing a desire to run for Club officers and/or to serve on a ballot committee as required by Club by-laws. The Club needs a transfusion of new blood to continue to provide the services our members need. To date, have had only one inquiry regarding volunteering to serve our Club.

## Treasurer's Report

David Hunt

dhhunt@ptdprolog.net

## Treasurer's Report for the Quarter January 1 – March 31, 2006

Beginning balance: January 1, 2006 \$5104.18

Income	Dues	\$375.00
	Donations	\$20.00
	Proceeds from auctions 99 through 101	\$1800.00
Expenses	The EFO Collector printing	(\$663.49)
	The EFO Collector mailing	(\$235.92)

Ending balance: March 31, 2006 \$6399.77

Note that due to price increases by our printer and the Postal Service the March issue of *The EFO Collector* cost \$79 more to prepare and mail than the September issue, even though they had both 32 pages.

Respectfully submitted,  
David H. Hunt, Treasurer

The EFO Collector

cwouscg@aol.com

John, Stan, Dave and Cemil have been working their hearts out to keep the Club afloat. The Club needs help in the areas of press relations, area members to serve as regional representatives, back issue director, legal issues, reports on specialties such as booklets, postal stationery, plate numbers, etc., etc.

For reporting purposes if members are also members of the American Topical Association, please notify me. The Club can obtain free ATA association provided we have 6 ATA members. In regard to this and by myself and Cemil Betanov - do we only have three who are also ATA members?

Please and if you can provide a service to our Club, make you wishes known to any Club officer. Innovative suggestions, comments, ideas, etc., always sought and welcomed. Also and if you can, we need candidates for president, vice-president, secretary, treasurer, and board of directors to serve the Club from July, 2006 to June, 2009. PLEASE VOLUNTEER!



## Secretary's Report

Stan Raugh

trex@bigplanet.com

## New Members

We have two new members to report, even though we are rushing to get this issue out in time for the Washington stamp show. A big welcome to:

Mary Vogenberger 1320 3368d Sunset Key Circle Unit 202 Punta Garcia, FL 33955	Emerson O'Brien 1321 22 East Windsor Court Keene, NH 03431
--	--

## Dues Are Due

If your membership number ends in "06-B." Send dues in early and your Secretary will more surely enjoy the Spring. One year is \$15, two years are \$27. This is a low price in this day and age. Anyone wanting to add a donation is welcome, as dues do not cover the publication costs and we depend on the little "extras" we get to help with expenses. To those who have contributed already, we give you a big "philatelic" hats off.



## EFOCC Auction Rules for Consignors

### Preparing Lots

Please use a blank form from, such as contained in a recent copy of the EFO Collector. Photocopies are fine. Please use a separate form for each lot.

Secure each lot to the front of the form; attach large lots to the reverse side. Protect all items with mounts, glassine, etc., and stiffeners, if necessary, but **be sure** item/items can be easily removed by Auction Director for examination and/or photographing. Do not use staples. Attach each item so that the description can be easily read. A simple and easy way to mount lots is to do so on dealer sales cards, or in glassines mounted face down for easy removal.

Include a reserve (minimum bid) or write "none". Lots may be revised to accurately describe items; or returned if necessary. Your name and EFOCC number must be on the consignment form, however, to preserve anonymity, these are removed from the consignment sheet before sending item to successful bidders.

Send consignments to J. E. McDevitt, 3562 Country Ct. N, Mobile, AL 36619-5335. Use **insured** or **registered** U. S. Mail.

### Consignor Fees

Consignor commission is 10% of the hammer price, with a minimum bid of 50 cents per lot.

Unsold lots incur a 50 cent fee per lot, and the consignor pays return postage and insurance.

Expenses and printing constraints make it impractical to picture every lot, especially those which are large in size. The EFOCC will exercise discretion in picturing lots.

### Consignor Special Instructions

To save postage and labor, EFOCC can automatically re-submit unsold lots with lower minimums in a future auction, **if you instruct EFOCC clearly what to do.**

If you send duplicate or very similar lots, it is consignor's responsibility to state clearly, if you would like to have these placed in different sales. Generally, EFOCC places all items received in the same sale to minimize paperwork.

### Consignment/Payment Timing

EFOCC receives consignments continually and prepares them for subsequent sales, roughly on a first-in/first-out basis. However, large lots may be spread over several auctions.

After the close of each sale, unsold lots are offered to bidders on a first come-first served basis for \$1 over the reserve with no buyer's commission or postage. This increases total sales, makes more bidders happy, and sells more lots for consignors, all for very little additional effort.

EFOCC needs approximately one month after auction's closing date to determine successful bidders, prepare and mail invoices, mail lots, receive payment from winners, list after sale lots and accept their offers, etc., etc. Thus, consignors can expect to receive payment about four to six weeks after an auction closes.

Lot #	Catalog	EFOCC Auction #104 - Lot Descriptions	Cat Val	Minimum Bid
1	1426	8¢ Missouri, plate strp/20, red washed out		\$5.00
2	1475	8¢ Love, plate strp/20, red shift down 1mm		\$5.00
3	1551	10¢ Christmas, Plate strp/20, yellow shifted 1mm to right		\$20.00
4	1504	8¢ Rural America, block/15, blue doubled due ghosting		\$8.00
5	2115e	22¢ Flag o/Capitol, imperfed coil pair	\$12.50	donation
6	1891a	18¢ Flag o/Lighthouse, imperfed coil pair	\$30.00	donation
7	1735a	A Eagle, imperfed coil pair	\$90.00	donation
8	1820a	15¢ Home of the Brave, imperfed coil pair	\$100.00	donation
9	1622a	13¢ Independence Hall, imperfed coil pair	\$50.00	donation
10	1509a	10¢ Crossed Flags, imperfed coil pair	\$50.00	donation
11	720	3¢ Washington, strip/3 with ink blobs on middle stamp		\$3.00
12	1509	10¢ Crossed Flags, plate strip/20, red shifted upwards		\$50.00
13	1528	10¢ Racing, normal stp & 1/w partial red missing, no gum		\$30.00
14	1525	10¢ VFW, normal stp & one with ghosting & dble blue		\$8.00
15	578	1¢ Franklin coil waste, imperfed bottom margin		\$60.00
16	1520b	10¢ Jefferson Memorial, imperfed coil pair	\$40.00	\$9.00
17	1701a	13¢ Christmas, horizontally imperfed pair	\$100.00	\$200.00
18	1402a	8¢ Eisenhower, imperforated coil pair	\$45.00	\$80.00
19	1305ee	15¢ Holmes, imperfed pair		125.00
20	41	Testing Coil, horizontal pair		Donation
21	1305a	6¢ Roosevelt, imperf coil pair	\$75.00	\$50.00
22	1804a	15¢ Baneker, horizontal pair, imperf vertically	\$800.00	\$300.00

## EFOCC Auction Rules for Bidders

### How to Bid

Please bid on a consignment form from a recent EFO Collector. A photocopy is fine. Include your EFOCC membership number. For new bidders and non-EFOCC members, please include your APS membership number. Sign your bid sheet to acknowledge acceptance of the EFOCC auction rules; unsigned forms can not be accepted. Submit bids to J. E. McDevitt, 3562 Country Ct. N, Mobile, AL 36619-5335, e-mail to cwouscg@aol.com.

### Bidding Precautions

Minimum bids are not estimates, but are true reserves established by the consignors. Bids below the listed reserve will not be accepted.

Bidders are responsible for inaccurate bids. Bids do not have to be typed, but, please, be sure numbers and amounts are clearly legible. Confirm phone and e-mail bids with a written bid sheet.

### Auction Bid Increments

Bid Level	Increment
\$1 to \$9.99	\$0.50
\$10 to \$49	\$1.00
\$50 to \$99	\$2.50
\$100 to \$499	\$5.00
\$500 and up	\$10.00

Please use the following increments when bidding and/or assigning reserves to consignments. Lots are sold to the highest bidder at one advance over the second highest bid.

EFOCC reduces non-conforming bids to the next

lower increment. For example, a bid of \$39.50 will be entered as \$39.00.

### Special Bidding Instructions

As the EFOCC auction is a small auction, special instructions can not be easily accommodated. EFOCC can not accept "BUY" bids, nor "INCREASE BY..." bids. **Please, make your final, best, and highest bid and you will get the lot at the lowest price available.**

### Bidders' Payments

A 10% buyer's premium is added to the hammer price of each lot. Buyers pay postage, plus insurance on lots valued at over \$10.00.

Payment is due upon receipt of invoice. If you will be out of town for a while just after an auction closes, or are moving to your summer home about that time, please let EFOCC know at the time you place your bids.

### Returning Lots

Within five (5) days of receipt of awarded lots, you may return any lot which is not described correctly provided such lot is still in its original condition. If an expertising certificate is a condition of bidding, please inform EFOCC of this before auction closes.

### One Final Request

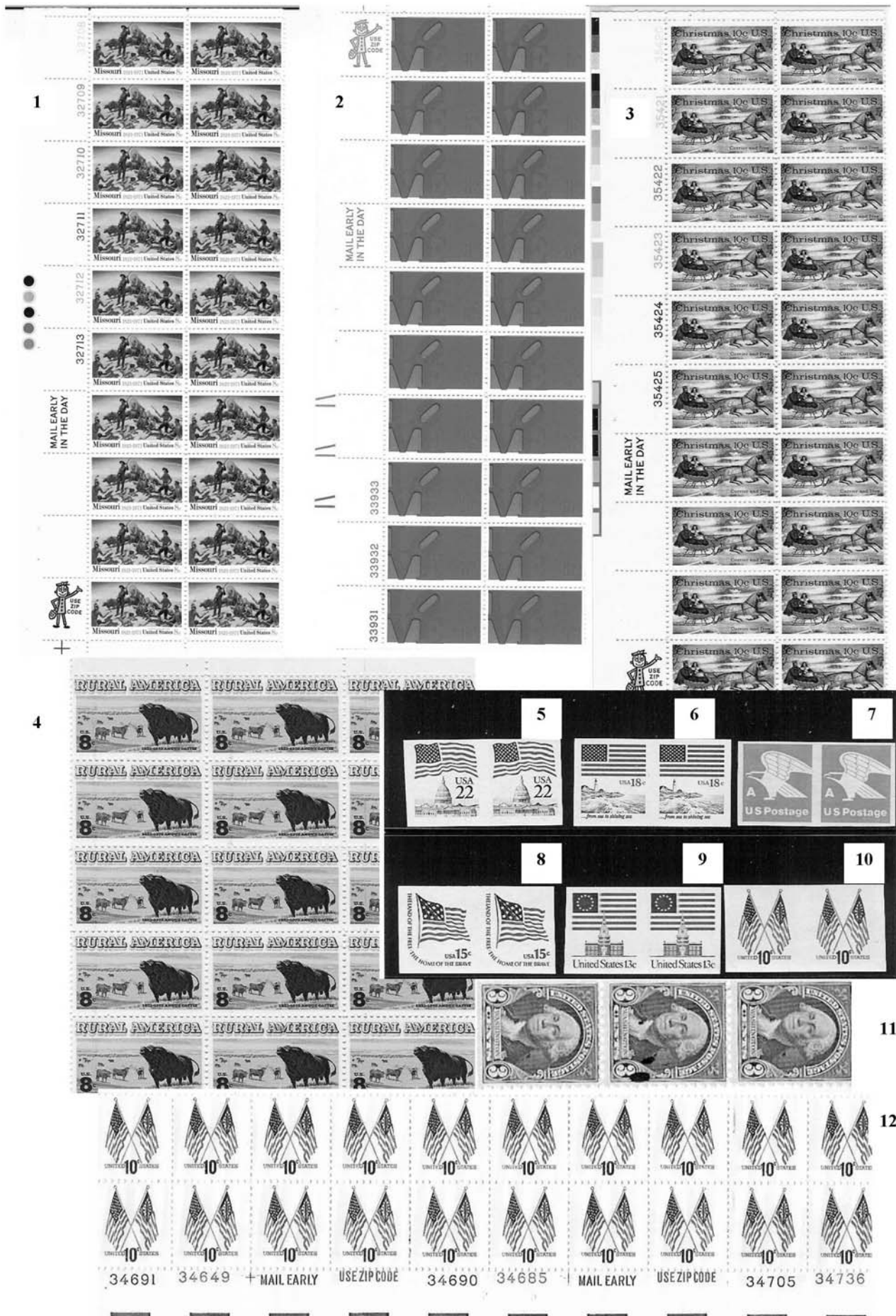
Please **bid generously on donation lots** whose monies go entirely to the benefit of the EFOCC.

23	C63	15¢ airmail, nice misperforation		\$8.00
24	1895	20¢ Flag o/Supreme Court, red color shift into field of stars		\$10.00
25	C36	25¢ airmail, extremely nice over inking		\$5.00
26	2041	20¢ Brooklyn Bridge, very nice misperforation		\$12.00
27	1856c	14¢ Lewis, strip of 11, rt two imperf., RARE! Only 10 known		\$125.00
28	1898Ab	Line strip 6, 100% plate 4 at bottom, scooped ink in 4's		\$9.00
29	2281c	25¢ Honey bee, value omitted, w/normal stamp	\$400.00	\$150.00
30	707	2¢ Washington, foldover, full gutter, stps f/adjointing pane		\$40.00
31	2897	32¢ flag, (arrow notes) single roulette shift, both panes		\$40.00
32		1¢ Washington, block/4, crazy perforations		\$50.00
33	528A	2¢ Washington, vertical strip/3, diagonal extraneous perms		\$60.00
34	689	2¢ Von Steuben, block/4, margin fold, crazy perms		\$30.00
35	540a	2¢ Washington, block/4, coil waste, hor. misperf, sm tear upper margin		\$20.00
36	499	2¢ Washington, block/4, hor. Shift (blind) through head		\$60.00
37	689	2¢ Washington, plate strip/3, corner fold, crazy perms		\$30.00
38	1906	17¢ Electric auto, PNC strip/5, miscut to show 100% #3		\$18.00
39	1338g	8¢ Flag o/White House, part coil line on rt stamp		\$7.00
40	1036	4¢ Lincoln, pair with inking smear		\$4.00
41	2277	E issue, coil pair, misperfed		\$4.00
42	1937-8	18¢ Capes, pair w/great upwards shift of black color		\$30.00
43	901a	2¢ Defense, imperf pair	\$27.50	\$12.00
44	PS12	PI # of 6, web splice on flying paster, double paper		\$45.00
45	279	1¢ Franklin, vert pair, extraneous perforations		\$30.00
46	538a	1¢ Washington, block/4, imperf horizontally	\$110.00	\$50.00
47	1622a	13¢ Flag o/Independence Hall, imperf coil pair	\$50.00	donation
48	1891a	18¢ Flag o/lighthouse, imperforated coil pair		\$25.00
49	1343	6¢ Law & order, misperforation		\$10.00
50	1455	8¢ Family planning, nice black color shift		\$9.00
51	1469	8¢ Osteopathic, nice downward orange shift		\$11.00
52	1744	13¢ Tubman, missing practically all the yellow		\$13.00
53	1910	18¢ ARC, multiple color shift		\$14.00
54	2560	29¢ Basketball, black color shift on popular topic		\$25.00
55	1153	4¢ Flag, misperforation		\$11.00
56	2110	22¢ J. Kern, misperforated pair		\$4.00
57	1437	8¢ San Juan, nice black color shift		\$13.00
58	1158	4¢ Japan, misperforation		\$12.00
59	1439	8¢ Care, nice blue streak		\$3.00
60	1547	10¢ Energy, color shift		\$3.00
61	1023	3¢ Sagamore Hill, plate scrape on bottom stamp		\$12.00
62	1402	8¢ Eisenhower, misperforated coil pair		\$80.00
63	1498	8¢ Postal Service, guttersnipe		\$4.00
64	C78	11¢ Airmail, miscut ZIP single w/portion of top pane		\$17.00
65	1839	15¢ Architecture, very nice change-of-design		\$10.00
66	1382	6¢ Football, nice misperforation		\$10.00
67	1903	9.3¢ Mail wagon, miscut coil pair, pc lines, plt #4		\$17.00
68	97	12¢ Washington, misperf to rt, 9x13 grill	\$225.00	\$60.00
69	2045a	Medal of Honor, mint single, red omitted	\$240.00	\$100.00
70	1616a	9¢ Capitol, miscut pair, imperforated, tape, original gum	\$150.00	\$75.00
71	1616a	9¢ Capitol, miscut pair, imperforated, tape remnants on gum	\$150.00	\$75.00
72	1618b	13¢ Liberty Bell, imperforated coil pair	\$25.00	\$10.00
73	1616a	Piano, imperforated coil pair	\$150.00	\$50.00
75	2005a	20¢ Consumer education, imperforated coil pair	\$100.00	\$40.00
76	1059Ac	25¢ Revere, imperforated coil pair	\$57.50	\$25.00
77	557	5¢ Roosevelt, single w/full gutter top		\$8.00
78		2¢ Washington, misperfed single		\$10.00
79	1756	15¢ G. M. Cohan, change-of-design		\$5.00
80	1757	13¢ CIPEX Sheet, green ink smear		\$10.00
81	UC50	22¢ USA aerogramme, Inverted w/color & EE bars		\$20.00
82		2¢ Washington, block/4, crazy perforations		\$10.00
83	2335a	22¢ N. American wildlife, w/APEX cert, pane/50, color shift		\$150.00
84	1789	15¢ J. P. Jones, lower perforations omitted		\$60.00
85		3¢ Washington, vertical perforation shift		\$4.00
86	1097	3¢ Lafayette, vertical perforation shift		\$4.00
87	834	\$5 Harding, black vignette shifted to right	\$85.00	\$25.00
88	1630	13¢ Franklin, light blue color omitted	\$225.00	\$150.00
89	1703	13¢ Christmas, Greg plate numbers badly smeared		\$10.00

You can view the lot pictures in color at [www.betanov.com/TheEFOCollector](http://www.betanov.com/TheEFOCollector)

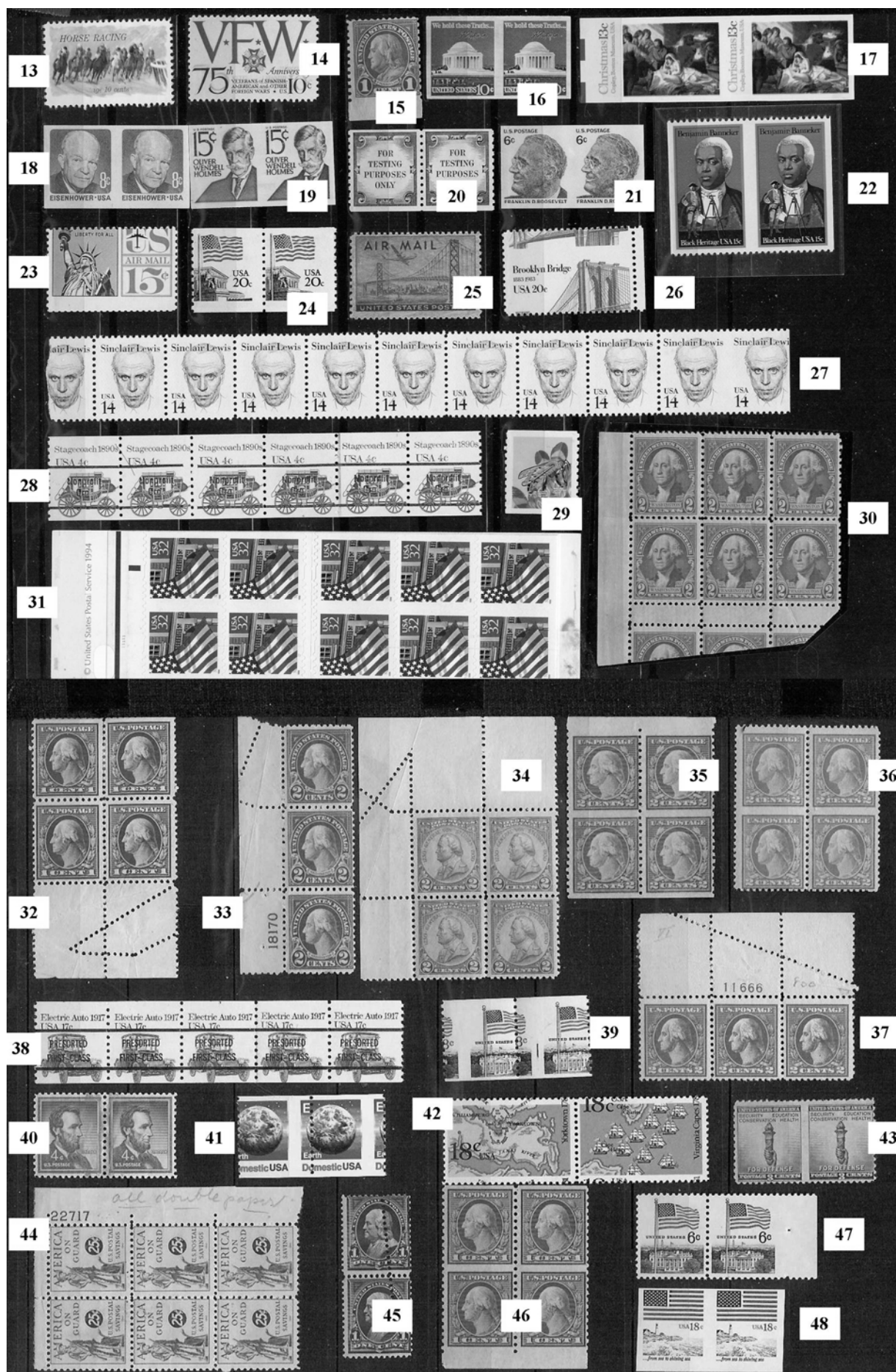
*Auction 104 closes on June 30<sup>th</sup>, 2006*

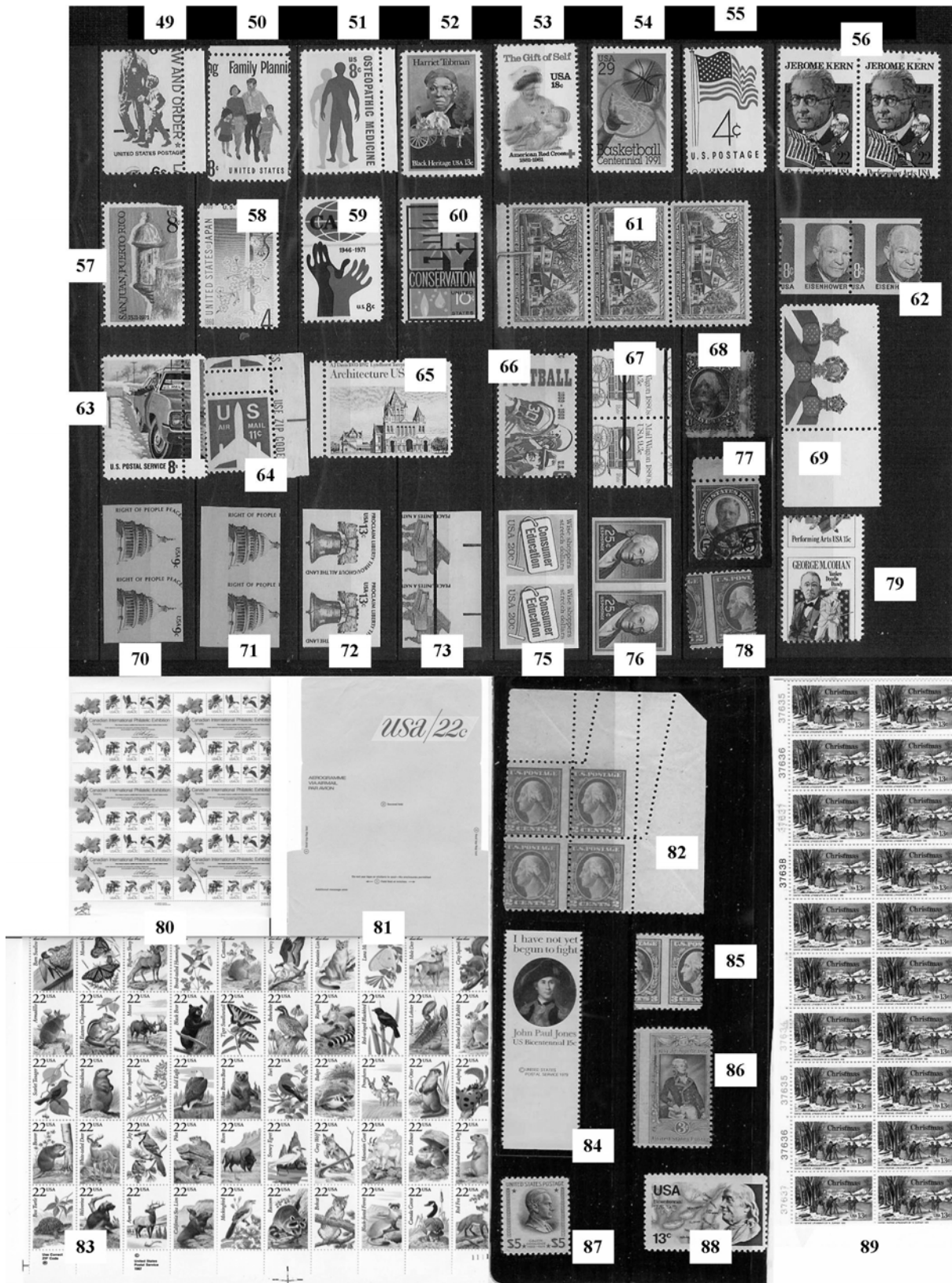
*Please use new address when mailing your bids to Auction Director*





You can view the lot pictures in color at [www.betanov.com/TheEFOCollector](http://www.betanov.com/TheEFOCollector) Auction 104 closes on June 30<sup>th</sup>, 2006





*Please use new address when mailing  
your bids to Auction Director*

*Auction 104 closes on June 30<sup>th</sup>, 2006*  
You can view the lot pictures in color at [www.betanov.com/TheEFOCollector](http://www.betanov.com/TheEFOCollector)

LOT #:



### Earliest postmark wins tie bids!!

**The EFO Collectors' Club**

**4217 8<sup>th</sup> Avenue  
Temple, PA 19560**

**PERIODICAL/DATED MATTER  
POSTMASTER, DO NOT  
DELAY DELIVERY**

***Return Service Requested***

*Please note new address to send  
your Auction bids!*