

# The EFO Collector



A Publication of the EFO Collectors' Club

APS Affiliate #103

ATA Chapter #94

Volume XXIII No. 6 (Whole Number 136) ISSN 1099-7377 July - September 2004

## Inside This Edition

### Features

Joseph Monteiro: Inverts Are the Most Spectacular Philatelic Errors .....	9
Cemil Betanov: EFOCC Vice-President Hotchner 2004 Luff Honoree .....	17
Exhibiting EFOCC Members .....	18
Jim McDevitt: The Most Unforgettable Character I've Ever Met .....	20
John M. Hotchner's "Perf Orations": The ABCs of EFOs .....	21
Stan Goldfarb: 1384: An Interesting Stamp .....	24
Stan Raugh's "Meeting Your Fellow Members": Alvaro Pacheco, Chile 1900 Surcharge 5 Specialist .....	29
Alvaro Pacheco: My Favourite EFO .....	30
Jim McDevitt: Auction 97: Closes on October 31, 2004 .....	33

### Columns

From Your Editor .....	3
Letters to the Editor .....	4
Of Interest To Members .....	4
President's Report .....	5
Treasurer's Report .....	6
Secretary's Report .....	7
EFOCC Member Post .....	28
Help With Members' New Projects .....	28
Endnotes .....	46
Buyers and Sellers of EFO Material .....	47



*To Err is Human  
To Find is Divine*



## **ALL CONTENTS COPYRIGHTED © 2004 BY THE EFO COLLECTORS' CLUB.**

Authors and contributors have express permission to reuse of their material elsewhere without permission. Except for material reprinted herein, or material individually copyrighted by the author, material herein may be reprinted elsewhere as long as full credit is given to the EFO Collector, citing the issue date and number and giving the address of the EFOCC Secretary.

The EFO Collector is published quarterly, in March, June, September and December. The submission deadline for any issue is the 15<sup>th</sup> of the month preceding the issue, e.g. 2/15, 6/15, 8/15 and 11/15. Send or e-mail editorial material directly to the Editor. Sample copies of the EFO Collector are available for \$3 from the Editor.

Membership includes subscription to the EFO Collector. Membership fees are as follows:

	Members with addresses in the U.S. or Canada	Members with addresses elsewhere
Initiation fee and first year's dues	\$16.00	\$30.00
One year membership renewal	\$15.00	\$30.00
Two year membership renewal	\$27.00	\$60.00

Please make membership renewal checks to "EFO Collectors Club" and mail to Treasurer.

Advertising for the EFO Collector will be accepted at the following rates:

Full page, camera-ready copy	\$30.00	First insertion must be fully prepaid. No discounts apply. The deadline for ad copy is the 15 <sup>th</sup> of the month preceding the issue. Advertising, ad payments, and related inquiries should be directed to the Editor.
Half page, camera-ready copy	\$16.00	
Quarter page, camera-ready copy	\$9.00	
Full page, requires composition	\$60.00	
Half page, requires composition	\$32.00	
Quarter page, requires composition	\$18.00	
Classified ads, per word	\$0.06	

EFOCC members are entitled to three free 35-word (excluding address) classified EFO Post ads annually. Please send or e-mail these to the Editor.

## **EFOCC Officers**

President	CWO Jim McDevitt cwouscg@aol.com	955 S. Grove Blvd., #65, Kingsland, GA 31548 Phone: (912) 729-1573, Fax: (912) 729-1585
Vice-President	John M. Hotchner jmhstamp@ix.netcom.com	POB 1125, Falls Church, VA 22041 Phone: (202) 663-2427
Auction Director	CWO Jim McDevitt cwouscg@aol.com	955 S. Grove Blvd., #65, Kingsland, GA 31548 Phone: (912) 729-1573, Fax: (912) 729-1585
Treasurer	David Hunt dhhunt@ptdprolog.net	45 Fairway Drive, Denver, PA 17517 Phone: (717) 445-9420
Secretary	Stan Raugh trex@bigplanet.com	4217 8 <sup>th</sup> Ave., Temple, PA 19560 Phone: (610) 921-5717
Editor	Cemil Betanov CemilB@optonline.net	153 Claudy Lane, New Hyde Park, NY 11040 Phone: (516) 849-6604
Board Member	Vacant (3 positions)	
Advertising Director	Vacant	

# From Your Editor



A few months ago, when I informally asked some members about the most needed change in the EFOCC, many people said that it was to have a regular auction. Well, the auction is back, thanks to Jim, who saved us (once again). My experience as a member has been that the EFOCC auction is a terrific way to acquire new EFO material. So, go ahead and be sure to have fun with the auction. Almost every non-EFOCC auction has an EFO section or at least some EFOs as part of the selection. But rarely do you find the EFO variety and price levels that exist at the EFOCC auctions.

Nevertheless, it is interesting to know which other auctions EFOCC members use and like. Do you do business with auction houses that regularly have interesting EFO material? Which ones? How are their prices? What kind of EFO material do they offer? What is your bidding strategy? For example, is it your experience that bidding under their listed price is effective? Can you check the status of your bids over the Internet? Have you had any experience with returning lots that did not satisfy you? Have you encountered any pitfalls or gotchas?

A related topic is buying EFO material over the Internet, through sites such as eBay. eBay does a huge amount of stamp business, and has changed life for many dealers. Along with dealers one recognizes, there are many who are unknown and/or mix stamps with other offerings such as postcards, antiques, objects with rhinestones, etc... There are other sites similar in concept to eBay. Even though I am computer literate and technology savvy, I am a little hesitant to buy stamps (or almost anything) from a guy (or gal?) with an Internet name like HonestJack123. How often do you buy from eBay or other similar Internet sites? Have you found that some eBay or similar dealers are particularly reliable in their descriptions, pricing and their customer service? Which ones? Does most or only some of their material consist of EFOs? What kind of EFOs do they carry? How are their prices? Do they have many listings, EFO or non-EFO? Please do share with your fellow members your experience EFO purchases over the Internet. While you are at it, also, go ahead and send in pictures of some of your purchases for us all to see. I think that having a list of known Internet-based EFO dealers, along with members' experiences, would be a valuable resource. So, please share whatever experience you have, for the benefit of all.

Two issues ago, I asked members to send me pictures of their EFOs. I use these as eye candy, to make the white space of the EFO Collector livelier. Several members provided very nice material. I still have some, but I would appreciate it if you sent in more, to give me a wider choice of EFO types, sizes, etc. After all, empty spaces come in all shapes and sizes... Also, please be sure to send in submissions for the "My Favourite EFO" column. If you want, your favourite EFO can "speak for itself" (as it did in the last issue), or I can call you when I receive your submission and chat with you, and create a write-up, as happened in this issue. I was happy to speak to member Alvaro Pacheco, who is a fascinating person in addition to being an experienced exhibitor. So, he ended up not only in the "My Favourite EFO" column, but also in the "Meeting Your Fellow Members." I hope that we will see more from Alvaro's fascinating "Chile 1900 Surcharge 5" collection in the future.

Congratulations to all our exhibitor members, as you will see, in the EFOCC we indeed have a fine and select group, as documented on pages 18 and 19. Last not least, congratulations to our Vice President John Hotchner on being honored with the 2004 Luff Award. More details on this on page 17.

Happy collecting.

Cemil  
CemilB@optonline.net



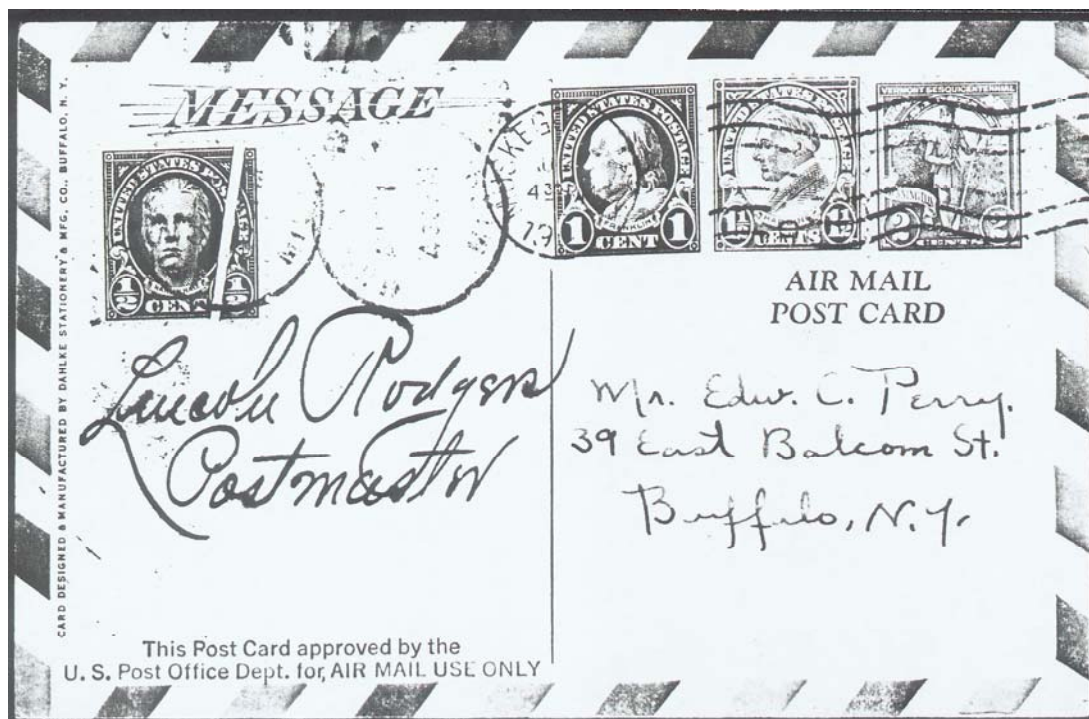
# Letters to the Editor

## Upping the Challenge: EFOs on Cover

For your freaks on cover, this is Scott's #551. Hope you can use.

Clyde Jennings  
Jacksonville, FL

P.S. From my son's and my US half-cent exhibit.



## Of Interest to Members

- **MEMBERS PLEASE NOTE PROCEDURE CHANGE:** From now on, please mail your membership renewal checks to our Treasurer David Hunt instead of Secretary Stan Raugh. David will deposit your check and notify Stan about your extension. Dave's address is listed on page 2. If you have already mailed your check to Stan, or by mistake you mail it to him in the future, there is no problem, he will ~~go and have a Big Mac at the local McDonald's where they accept checks~~ still handle your membership extension. Make checks payable to the "EFO Collectors Club" and write your membership number on the front of the check.
- As this is being written, several of our members are getting ready to go to Stampshow 2004 in Sacramento. As Jim mentioned in the last issue, there will be a western regional meeting of the EFOCC. Please be sure to e-mail (or write to) your Editor with EFO related news of interest to members from Stampshow 2004.



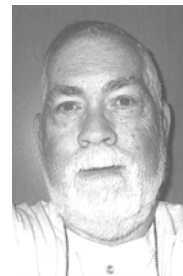
From member David Hunt's collection: The Queen eclipsed by the Parliament....



# President's Report

Jim McDevitt

cwouscg@aol.com



So very pleased to note another milestone has been attained since the EFOCC's founding in 1978. It was in London, England, in May of 1980, that our Club became affiliated with the American Philatelic Society.

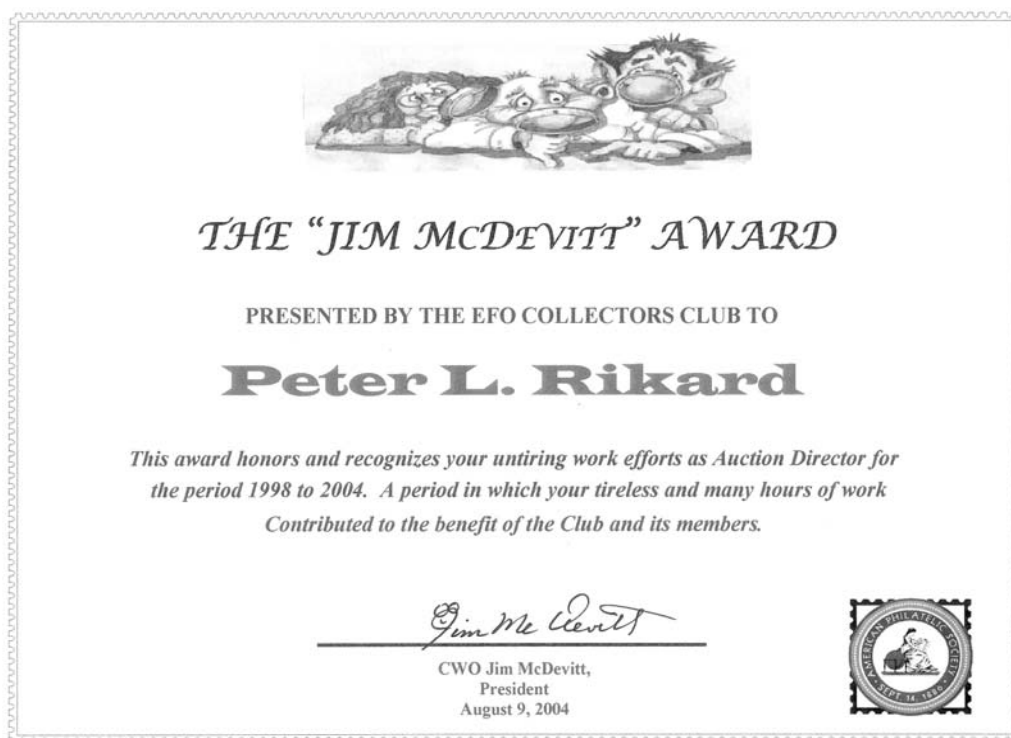
The APS has provided the Club with meeting venues during their winter and summer shows and will present our 25<sup>th</sup> anniversary certificate during Stampshow 2005 at Grand Rapids, Michigan.

Sincere thanks to Ed Silver for his recruitment efforts on behalf of the EFOCC and to Clyde Jennings for his generous donation to the Club's treasury. Speaking of Clyde and to expound on the fact that he is a world-renowned character, please see an article on him, elsewhere in this journal.

Very pleased to report that yours truly has taken over the reigns as EFOCC Auction Director. Auction 97 with 100 lots appears elsewhere in this issue. Of note, I will strive to have an auction in each quarter's journal—so—please send me your material so that others can fill the empty spaces in their albums or better their exhibits. In order to meet the EFO Collector's printing deadline, I will need auction material to reach me by February 1, May 1, August 1 and November 1. Please remember, the Club can always gain from donated material.

I am pleased to announce that the EFOCC Board has voted to adopt a new Club Award. This award will be to honor and recognize exceptional service on behalf of the EFOCC, I am doubly pleased—and honored—that this award will be given in my name and that the first recipient of the **McDevitt Award** will be Mr. Peter Rikard. Peter has done a stellar job as EFOCC Auction Director for the past six years. WELL DONE, PETER!!

A reminder at all, the next EFOCC Eastern Regional Meeting will be held during VAPEX, November 5 to 7, 2004. As usual, we will have a table during the show, business meeting and the annual Doubletree Saturday morning breakfast.



# Treasurer's Report

David Hunt

dhhunt@ptdprolog.net



## Treasurer's Report for the Quarter April 1 – June 30, 2004

Beginning balance April 1, 2004			\$5560.85
Income	Dues and initiation	\$80.00	
	Sample Copies	\$18.00	
	Donation (Clyde Jennings)	\$25.00	
Expenses	EFO Collector printing	(\$533.27)	
	EFO Collector mailing	(\$179.89)	
	Officers' expenses	(\$235.08)	
Ending balance June 30, 2004			\$4835.61

1. Sincere thanks to Clyde Jennings for his donation to the Club.

## Treasurer's Report for fiscal year July 1, 2003 – June 30, 2004

Opening balance July 1, 2003			\$7489.81
Income	Dues and initiations	\$1277.04	
	Sample copies	\$24.00	
	Donation (Clyde Jennings)	\$25.00	
	Total income		\$1326.04
Expenses	EFO Collector 4 issues printing	(\$2332.05)	
	EFO Collector 4 issues mailing	(\$807.56)	
	Website	(\$214.50)	
	Awards	(\$3.85)	
	President's expenses	(\$481.88)	
	Editor's expenses	(\$7.60)	
	Secretary's expenses	(\$34.73)	
	Treasurer's expenses	(\$14.10)	
	Reimbursement of postage to R. Hagan	(\$83.97)	
	Total expenses		(\$3980.24)
Closing balance June 30, 2004			\$4835.61

1. \$400 in dues was deposited in early July. The same thing happened last July, so I think including the \$400 in the next (2004/2005) fiscal year does not bias this report.
2. The Club auction account is held by the Auction Director and is separate from the Treasurer's accounts, however, it does add to the Club's bottom line. I am told the Auction currently holds a positive balance of approximately \$1900.

Respectfully submitted,  
David H. Hunt, Treasurer

# Secretary's Report

**Stan Raugh**

**trex@bigplanet.com**

## New Members

Welcome to our new members:

Dr. Howard Levine	1302-05B	Joseph Chervenyak	1303-06D
1809 Kirkmont Drive		58 Stony Road	
San Jose, CA 95124		Edison, NJ 08817	

Please check your label to make sure all is correct. Read carefully through the **EFO Collector** to familiarize yourselves with services offered, including free ads to help build your collection and get help with your projects.

## Status Change

Charles J. O'Brien                      LM-28  
3475-1540 Oak Valley Road  
Atlanta, GA 30326

Mr. O'Brien has upgraded his status to a life membership. I congratulate him on his faith in the club and thank him for his commitment.

This is a good time for me to promote life memberships in the EFOCC. At just \$210, a life membership is a good investment. It will protect you from future dues increases. Many clubs price life memberships from \$350 to \$600 or more—some as high as \$1,000. I am saving my pennies to gradually convert many of my memberships to life status. Why? Because working with several hobby clubs, I hear many times from members who go into retirement and cannot afford rising dues. Lock up your membership for the future. We will also accept three payments of \$77 each over the course of a year. How can you lose?

## Are My Dues Due?

If the number after your name ends in "04C" your dues are due! About a half a dozen members will have this designation and I hope all of you sign up again! Also, if you have "04D", your dues are coming up the end of this year. Help 'ole Stan and the Treasury by mailing in dues early.

## Reminder

It is a good idea to check your mailing label. If you sent in your dues, your mailing label helps you verify that you were properly credited. Sometimes I add extra initials, zip-4 codes, etc., when I can. I check and double-check...but just to be sure, it is a good idea to look. If you find any mistake, please e-mail me or write me!

## NEW! Process Change

You can now mail your renewal checks to our Treasurer. This will avoid extra handling. If you forget and mail it to me, don't worry, we got ya' covered...but this is the way many clubs do it and we hope it improves service. Please make check payable to "EFO Collectors Club". Including your member number would also help.

What can you expect from

## SCHIFF AUCTIONS

When you consign  
your U.S. or worldwide  
stamps and covers?

1. **YOUR COLLECTION** will be carefully examined, lotted and accurately described by our professionals.
2. **OUR WORLDWIDE CLIENTELE** developed over fifty-seven years will competitively bid on your stamps and covers.
3. **YOU CAN SELECT** the auction dates best suited for you consignment. Our guidance will assist you.
4. **OUR EXTENSIVE ADVERTISING** in publications throughout the U.S., Europe and Asia will lure buyers to your properties.
5. **WE PROVIDE INSURANCE** by Lloyds of London as soon as your collection is delivered to us or to our bonded employee.
6. **WE PERSONALLY DISCUSS** your collection with you to advise how you can achieve the most financially rewarding results.
7. **OUR LOW COMPETITIVE COMMISSION RATES** makes us partners to secure the best results.

### SERVING STAMP COLLECTORS FOR OVER 57 YEARS

CONTACT US BY MAIL, TELEPHONE OR FAX BEFORE SENDING STAMPS AND COVERS. WE WILL TRAVEL FOR CONSIGNMENT OF SPECIAL VALUE.

## JACQUES C. SCHIFF, JR., INC.

195 Main Street, Ridgefield Park, NJ 07660 U.S.A.

Telephone: (201) 641-5566 From NYC: (212) 662-2777 Fax: (201) 641-5705

Est. 1947 Licensed & Bonded Auctioneers

# Inverts Are the Most Spectacular Philatelic Errors

Joseph Monteiro

## Introduction

In philately, perhaps no single event generates as much excitement as the discovery of an *inverted error stamp*. Inverted errors have been singled out in the history of postage stamps as the most spectacular errors. They enjoy a special status in philately and are recognized by philatelists throughout the world as the most important type of printing errors. These errors are specially prized by philatelists, as seen in the extremely high prizes fetched by these errors, often ranging from tens to hundreds of thousands of dollars. The magnetic appeal of these inverts has been so high that even queens have asked for them, and gunmen have sought to obtain them by committing armed robbery. The sensational effect of these philatelic gems can perhaps be better captured by the phrase “*Seeing is believing*.” As a result, inverts of each country occupy a special place in postal history, and almost every country in the world has inverts which have become renowned. In this article, we look at some of these, with emphasis on Canadian and US inverts.

## Definition of an Invert

An invert is something that is turned *upside down* [1]. To stamp collectors, an invert generally means that some part of the design is printed upside down. This would encompass not only normal types of upside down designs but also cases where parts of the upside down design are shifted, or where parts of the upside down are double printed or printed with a missing colour or design. The same applies to surcharges which are not an integral part of the design or part of the design attachment that is placed upside down on the stamp, such as, for example, a hologram.

This definition is much narrower than other definitions which include as inverts, errors where other dimensions of the stamp are inverted with respect to the printing. Examples of this are cases where the colour is inverted with respect to the design printed or where the perforation is inverted with respect to the design printed, etc. This exclusion may not be accepted by all philatelists as some catalogues also list these errors as inverts. It also excludes stamps that are intentionally designed as inverts such as the recent Pan American inverts issued in 2001 to commemorate the original Pan American inverts.

The causes of inverted errors will first be examined. Second, types of inverted errors that have occurred will be reviewed. Third, the well-known definitive inverted errors that have been found in the Queen Elizabeth II era, i.e. from 1853 to date, and in the US will be indicated. Finally, a few concluding remarks will be made.

## The Causes of Inverted Errors

### Single Printing Plates with an Additional Surcharge or Attachment

Over the history of printing postage stamps, printing was usually done with a single printing plate. As a consequence, if a stamp needed to be revalued or overprinted with a surcharge, another plate was needed. It is therefore not surprising that this would lead to inverts. A few sheets of stamps were occasionally placed in the reverse direction when the plate containing the surcharge was applied. As a result, the earliest known Canadian inverts were those that used a second plate. Examples of these were created when the 2-cents value of the 1899 provisionals of Queen Victoria or the 2-cents value of the 1926 King George V Admiral provisionals were revalued. There are no examples of such inverts for the period after 1953, as not many definitives were revalued with an overprint for government use.



## Single Printing Process Using Multiple Plates

The use of a printing process with one plate has its constraints as it results in stamps with a single colour. To circumvent this constraint, stamps were printed with two or more plates, depending on the number of colours needed. The cause of inverts in this case is the same as indicated in the preceding paragraph. It is not possible, however, to generally indicate whether the invert occurred during the printing of the first plate or second plate. Nor is it possible to know why the error occurred during the printing process, i.e. whether it was a mistake or whether it was deliberately created. The only known Canadian invert printed by a single printing process with multiple plates was the 5-cents 1959 St. Lawrence Seaway (Figure 1).



Figure 1: St. Lawrence Seaway issue invert.

## Multiple Printing Processes

The development of printing technology led to the use of multiple printing processes to print a stamp. This meant that after sheets of stamps were printed using the first printing process it had to be fed into the printing press employing the second process. It is therefore not surprising to guess why the printing of inverts are possible. An error occurs somewhere during the two processes, the partially printed sheets were fed incorrectly to receive the impression by the second printing process. There are two known Canadian inverts which have been discovered where multiple printing processes have been used: the \$1 Runnymede Library and the \$2 Truro School. In both cases, lithography was used to print the design and steel engraving was used to print the inscription.

## Types of Inverted Errors

There are various types of inverted errors. One can classify inverts into:

- i. normal inverts, i.e. where part of the basic design is inverted with respect to the rest of the design on the stamp;
- ii. normal inverts with part of the basic design or the rest of the design shifted;
- iii. normal inverts with part of the basic design or the rest of the design being double printed or printed with a missing colour or design; and
- iv. inverts resulting from a surcharge (either denomination or inscription) that is overprinted or inverts resulting from the application of an attachment.

Describing these incredible inverts can often be extremely difficult and the Chinese adage that “*One picture is worth more than a thousand words*” appears to be appropriate in these circumstances. Nevertheless, an attempt shall be made to describe these errors as these inverts are dissimilar in some respects.

## Normal Inverts

The first group referred to above has been considered to be the classical type of invert. There are two Canadian stamps that fall into this category: the 5-cent St. Lawrence Seaway (Figure 1) and the \$2 Truro School (Figure 2). There are eight US stamps that fall into this category: the 5-cent Columbus; the 24-cent Declaration of Independence; the 30-cent Eagle and Shield; the 1901 Pan American issue of the 1-cent steamship, the 2-cent Train and the 4-cent Antique Automobile; the \$1 Candle Holder (Figure 3 ); and the 24-cent Jenny Biplane (Figure 4).

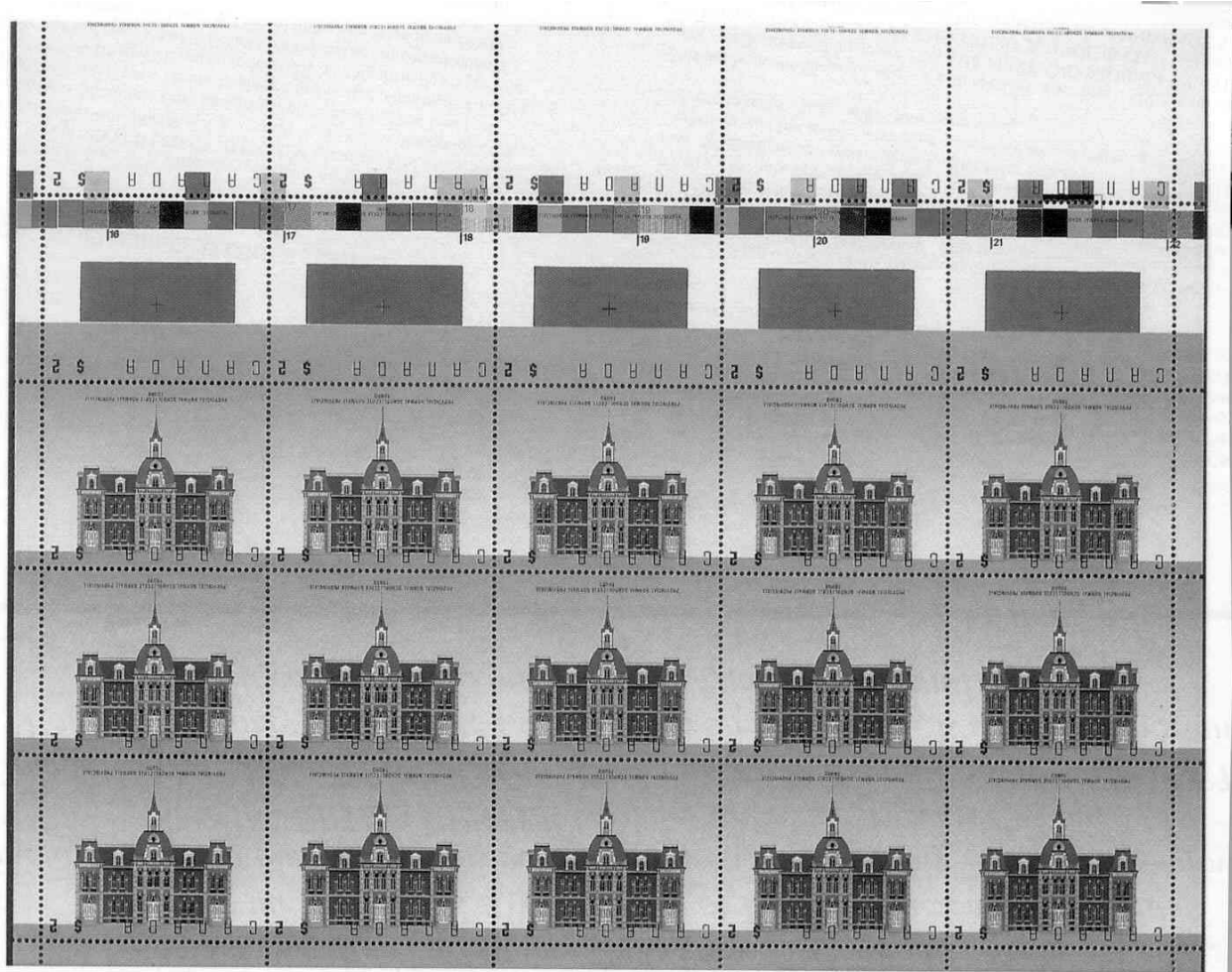


Figure 2: \$2 Truro School invert, pane 1.



Figure 3: The US \$1 Candle Holder.



Figure 4: The US 24-cent inverted Jenny biplane.

The Canadian inverts in this group will be first described. The 5-cent St. Lawrence Seaway error can neither be described as the inversion of the basic stamp design (centre) nor the inversion of the lettering. It is difficult to tell which is inverted. According to the Deputy Postmaster General of Canada, G. A. Boyle "...there is no way of knowing the answer. We could not assume that the first colour printed on the stamp was necessarily right side up at the time the stamps were run through the press for the second colour. Therefore, it is unlikely that this question ever may be answered [2]. Mr. Boyle further stated that any reference to the stamps as Inverted Centre or Inverted Lettering lacks accuracy. A correct name would simply be *the St. Lawrence Seaway Invert*.

The \$2 Truro School invert may be described as a stamp with the design inverted or with the steel engraved inscriptions inverted. These inverts can be classified into one basic invert and three other varieties. Holding Pane 1 (Figure 2) with the Truro Building upside down, the errors may be described as:

- First, the normal invert (i.e., with the Truro Building upside down with the inscription appearing normally or vice versa).
- Second, a variety with the inscription 'CANADA \$2' with the green colour background on the upper third of the stamp. Below it is a large dark green rectangle and at the bottom are different colour squares and the fine inscription print; above one of the colour squares is a number on each stamp. This variety is from the fourth row of Pane 1.
- Third, a variety with the inscription and no design of the stamp or colour background of the stamp, other than the three or four colour squares which normally appears in the gutter and gets cut off. This variety is from the fifth row of Pane 1.
- Fourth, a variety that is similar to the second variety, except that at the bottom of the stamp there are no colour squares and number on each stamp. Instead of the latter, there appears the same green colour background that appears in the upper third of the stamp. This variety is from the fourth row of Pane 2 (Figure 5).

The US inverts in this group will be now described. The 15-cent Columbus Landing, the 24-cent Declaration of Independence, the 30-cents Eagle and Shield, the three 1901 Pan American inverts, and the 24-cent Jenny bi-plane (Figure 4) all have the central design inverted. The \$1 candle holder invert (Figure 3) has the flame and colour of the candle inverted with the result that it appears under the inscription. As indicated for the St. Lawrence Seaway invert, one cannot say what is inverted - the central design or the other design. One cannot say which part of the design was printed first. However, an examination of the colour on the stamps indicates that the other design in the case of the three 1901 Pan American inverts, and the flame and colour of the candle were printed first based on whether one colour covers the other. In all these inverts, two different plates were needed for the two different colours.

### Normal Inverts with Part of the Basic Design or the Rest of the Design Shifted

The Canadian inverts in this group will be first described. The \$1 Runnymede Library stamp (Figure 7) can be described as an *inverted and shifted inscription error*. The \$1 Runnymede Library invert can be described as an inversion with a shift of the steel engraving inscription. Alternatively, it has been described by Fred Baumann as: "On the pane shown (Figure 8), the inverted intaglio black appears to have been offset about 1/2 inch to the left. The result is that the inverted text on 20 of the 25 stamps now reads '\$1 CANADA' and the small inscription that is now across the top of the stamp, instead of being centered, is shifted sharply to the left. The vertical strip of five stamps on the left shows only the intaglio inscription '\$1' and various intaglio marginal markings. The shift also resulted in the 'DA' of 'CANADA' and part of the bilingual inscription being printed in the right margin selva of the pane. The stamp at position 11 is unique in the pane, showing only the inverted '\$1' and no other portion of the intaglio black printing" [3]. It is worthwhile noting the position of the "\$1" on the invert, it appears before "CANADA" whereas on the normal stamp it appears thereafter.





Figure 5: The \$2 Truro School invert, pane 2.

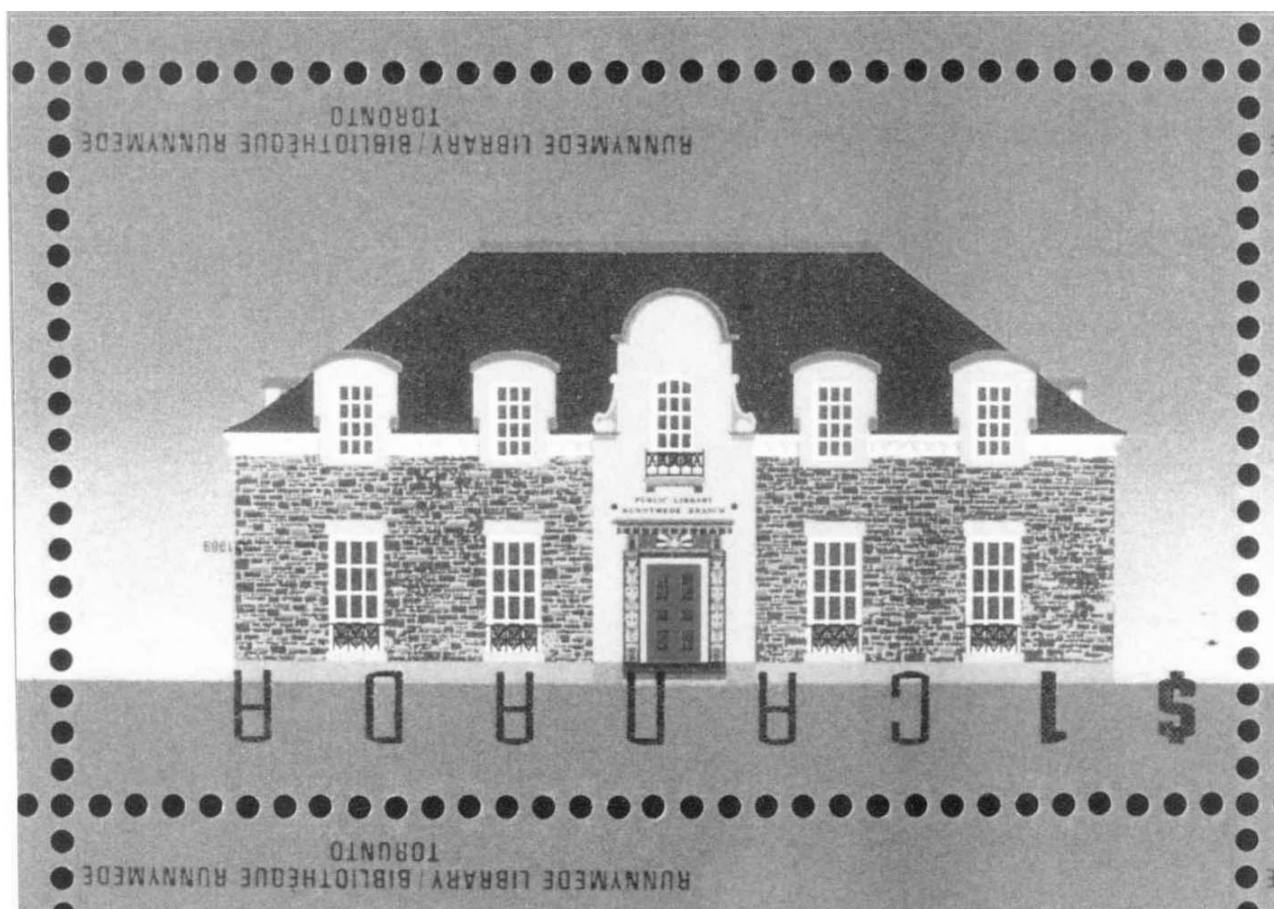
The US inverts in this group will be now described. The 24-cent Declaration of Independence stamp can be described as an *inverted and shifted perforation error*: Some of these stamps were also misperforated with the result that part of the denomination appears at the top of the stamp rather than at the bottom. The 32-cent Richard Nixon stamp (Figure 6) can be described as an *inverted and shifted design error*: “The inverted bust is out of register with elements of the second press run, and as a result, appears split in two. Transition pairs exist consisting of one invert stamp and stamp containing only the top half of Nixon's bust and no other elements of the design” [4]. In other words, the name Richard Nixon printed at the top of the stamp is inverted with respect to the bust and value which is shifted appearing in part at the top and bottom of the stamp, as a result the name appears over part of the head of the bust.



Figure 6: 32-cent Nixon invert.

#### Normal Inverts with Part of the Basic Design or the Rest of the Design Double Printed or Printed with a Missing Colour or Design

Inverts in this category have not been found on Canadian stamps. It is worthwhile noting that though the 5-cent St. Lawrence Seaway was found with one of the engraved plates printed twice, it was not found on the 5-cent St. Lawrence Seaway invert.



**Figure 7: \$1 Runnymede Library invert.**

### Inverts Resulting From a Surcharge

Stamps in this category have occurred before the coronation of Her Majesty, Queen Elizabeth II, in 1953. Other examples of this are the 2-cent 1899 Provisionals of Queen Victoria or the 2-cent 1926 King George V Admiral provisionals. Canadian definitive stamp inverts before 1953 are outside the scope of this study. They will therefore not be reviewed here. So far I am not aware of any stamp with other attachments or holograms inverted.

## The Definitive Inverted Errors of the Queen Elizabeth II Era (1953-2001) and United States

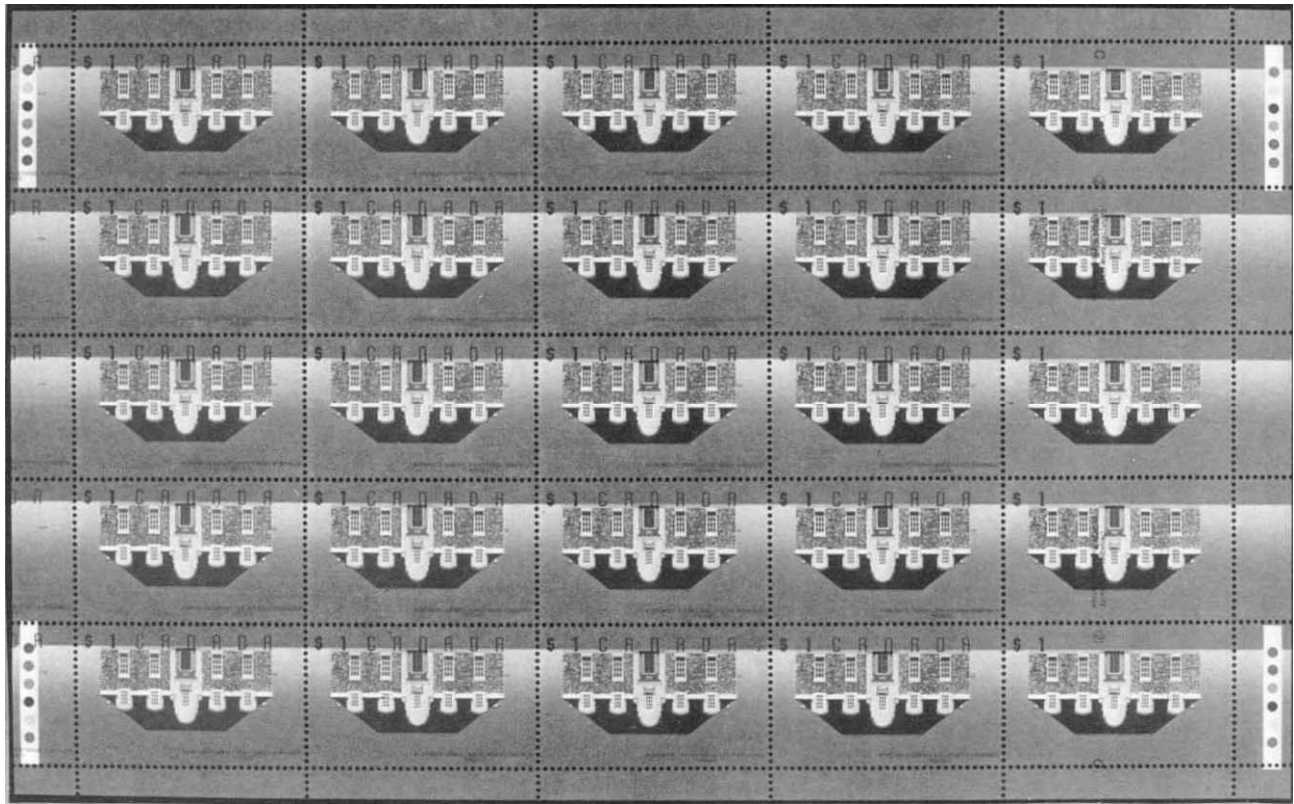
The well known inverted errors from the definitive stamps of the Queen Elizabeth II Era and the United States are shown in the tables hereafter. These tables provide most of the technical details.

**Table 1: Canadian inverted definitive errors from the Queen Elizabeth II Era (1953-2004).**

<i>Scott No.</i>	<i>Value</i>	<i>Subject</i>	<i>Printer</i>	<i>Perforation</i>	<i>Method</i>	<i>Form</i>	<i>FDI</i>	<i>Tagging</i>	<i>Plate No.</i>	<i>Error Type</i>
387i	5c	St. Lawrence Seaway	CBN	12x12	Steel eng.	Pane (50)	June 26, 1959	Untagged	BC	Inverted centre
1181?	\$1	Runnymede	CBN	13.1x13.7	Steel eng. & litho	Pane (25)	August 28, 1992	Untagged	P2	Inverted centre/ inscription with shift
1376?	\$2	Truro School	CBN	13.3x13	Steel eng. & litho	Pane (25)	February 20, 1995	Untagged	BC	Inverted centre inscription

Abbreviations: CBN: Canadian Bank Note Co., Ltd., BC: Blank Corner, Eng: Engraving, Litho: Lithography.





**Figure 8: The \$1 Runnymede Library invert pane.**

**Table 2: US inverted errors.**

<i>Scott No.</i>	<i>Value</i>	<i>Subject</i>	<i>Printer</i>	<i>Quantity Known (*)</i>	<i>Method</i>	<i>Form</i>	<i>FDI</i>	<i>Tagging</i>	<i>Plate No.</i>	<i>Error Type</i>
119b	15c	Columbus Landing	NA	3/100	Steel eng.	Pane	1869	Untagged	NA	Inverted centre
119c	15c	Columbus Landing	NA	3/0	Steel eng.	Pane	1869	Untagged	NA	Inverted centre /double print
120b	24c	Declaration of Independence	NA	4/80	Steel eng.	Pane	April 7, 1869	Untagged	NA	Inverted centre /print shift
121b	30c	Eagle and Shield	NA	7/40	Steel eng.	Pane	May 15, 1869	Untagged	NA	Inverted centre
294a	2c	Steamship	NA	250/NA	Steel eng.	Pane	May 1, 1901	Untagged	NA	Inverted centre
295a	2c	Train	NA	150/5	Steel eng.	Pane	May 1, 1901	Untagged	NA	Inverted center
296a	2c	Antique Automobile	NA	100/NA	Steel eng.	Pane	May 1, 1901	Untagged	NA	Inverted centre
1610c	\$1	Candle holder	NA	95/5	Steel eng. & Litho	Pane (100)	July 2, 1979	Tagged	NA	Inverted candle flame
2955	32c	Richard Nixon	Barton Press & BNCA	160/NA	Steel eng. & Litho	Pane (50)	July 2, 1979	Tagged	NA	Bust inverted /print shift
C3a	24c	Jenny Biplane	NA	100/NA	Steel eng.	Pane (100)	May 13, 1918	Untagged	NA	Inverted centre

Abbreviations: BNCA: Bank Note Corporation of America, Eng: Engraving, Litho: Lithography.

(\*) Unused/used.

Since these inverts are really gems of philately, the number of these inverts discovered will be indicated. First, the Canadian inverts will be described, followed by the US inverts.

The St. Lawrence Seaway, the best known Canadian invert, was discovered in several locations in Canada. Estimates of the number discovered depend on whether one uses the number known to have been found or

knowledge of the printing format. According to the former, 500 inverts were discovered of which 125 were returned to the post office, however, according to the latter as many as 2000 could have been printed. The \$1 Runnymede Library invert with the shifted inscription is known to have been found on one pane of 25 stamps. However, given the format in which these stamps were printed, it is believed that at least one sheet or six panes should have been produced with this error. The \$2 Truro were printed four panes to a sheet (i.e., 4x25). So far 10 panes of inverts are known to exist (70 normal inverts and 10 inverts for each of the three varieties). Given the printing format at least another two panes should exist.

The 24-cent Jenny bi-plane, the most famous of the US invert, was discovered at a Washington Post Office on May 14, 1918 by William T. Robey. The sheet of 100 stamps was sold to Eugen Klien and then to Col Edward H. R. Green and then divided into singles and blocks. Though this invert is the most famous, it is the 24-cent Declaration of Independence stamp that has realized the highest price of \$258,000. The numbers of unused/used copies of the 15c Columbus Landing are 3/100 whereas the numbers for the 24c Declaration of Independence are 4/80. As far as the 30-cent Eagle and Shield stamp, the number unused/used of it is estimated to be 7/40. Estimates of the 1901 Pan American steamship, Train and Antique Automobile inverts are, respectively, 250/NA, 150/5 and 100/NA. The more recent \$1 candleholder invert was sold in a government office in Washington and estimates of the number in existence are 95/5. Estimates of the Richard Nixon inverts are 160/NA.

## Conclusion

Inverts are superb gems of philately, often described as 'spectacular' and 'fabulous'. This is not surprising as revealed in the prices obtained for these gems. Several of the US inverts are catalogued at more than US \$100,000 and instances of them being sold at above their catalogue prices have also been recorded. For example, the Curtis Jenny bi-plane has been sold many times for more than US \$200,000.

The inverts described here have been narrowly defined, which I believe is the most appropriate definition. As a result, inverts have been excluded where some other parameter of the stamp is inverted with respect to the design of the stamp. Examples of this are the 4-cent Dag Hammarskjöld stamp which has the yellow colour inverted or the 24-cent Washington Crossing the Delaware souvenir sheet with five stamps which has the perforation inverted. Everyone may not agree with this definition as some catalogues continue to list them under inverted errors.

## Bibliography

- [1] *The Concise Oxford Dictionary*, p. 640
- [2] G. A. Boyle: *Letter of Deputy Postmaster General of Canada*, April 7, 1961
- [3] "First Canadian Invert Since 1959 Revealed: 1989 \$1 Runnymede Library in Pane of 25", *Linns Stamp News*, June 5, 1995, Volume 68, No. 347, pages 1 and 24.
- [4] Datz, Stephen R.: *Catalogue of Errors on US Postage Stamps*, 6<sup>th</sup> Edition, Sanabria, 1966/67, p. 136.
- [5] Monteiro, Joseph: *Major Canadian Postage Stamp Errors of the Queen Elizabeth II Era (1953-1996)*, 1996.
- [6] Monteiro, Joseph: *Printing and Perforating Errors of Postage Stamps in Canada (1953-1997) – An Analysis*, 1998.
- [7] Monteiro, Joseph: "The Recent Wedding Invert", *The Belize Collector*, Volume II, Number 3, July-September 1988, pp 3-5.
- [8] Monteiro, Joseph: "Major Errors in the Architecture Definitives of Canada", *BNA Topics*, Volume 55, Number 2, April-June 1998, pp. 13-21.
- [9] Monteiro, Joseph and Bylen, Peter: "Question Raised About Belize Royal Wedding Invert", *Linns Stamp News*, March 13, 1989, p. 7.
- [10] Monteiro, Joseph: "The \$2 Truro Provincial Normal School Invert", *Corgi Times*, The Elizabethan II Study Group Newsletter, Volume V, Issue No. 3, November-December 1996, pp. 48-54.
- [11] "#3a Airmail Invert Brings \$143,000 At Auction", *Stamps*, February 1, 1986, p. 234.
- [12] "Americana Invert at Ameripex", *Stamps*, May 31, 1986, pp. 592-593.

# EFOCC Vice-President Hotchner 2004 Luff Honoree

## Cemil Betanov

We are happy to report that our vice-president, John Hotchner, has been named as one of the three recipients of the 2004 John N. Luff awards, the highest recognition awarded by the American Philatelic Society. We provide below the announcement in the American Philatelist August 2004 issue.



## Boehret, Kimmel, Hotchner 2004 Luff Honorees

**John M. Hotchner**, of Falls Church, Virginia, receives the *Luff Award for Outstanding Services to the American Philatelic Society*. His involvement with the APS is exceptional, having served on the APS Board for sixteen years, with a term as president from 1997–99. Before that, however, he served as the Chairman of the Chapter Activities committee, CANEJ, the Mentor Service, the Kehr Award Committee, and as liaison with the United States Postal Service.

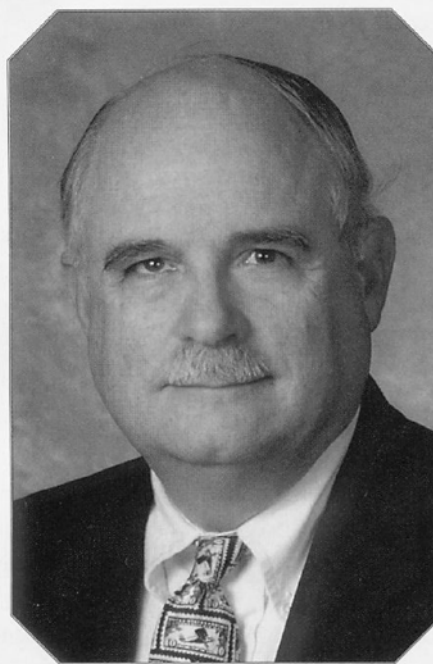
He has been involved as an expert for APEX (the APS Expertizing Service) and a member of the Youth Activities Committee, the Speaker's Bureau, the Estate Advisory Service, and the Planning Committee. He also has been a member of the Citizens' Stamp Advisory Committee. There may be other organizations that Hotchner could have been a member of, and if so, they too would have been improved by his participation.

Hotchner is nationally accredited as a chief judge both for philatelic exhibits and for literature. He is also accredited internationally.

His outside activities include research, writing and editing, particularly as editor of *The Philatelic Exhibitor*. He has a regular column in *Linn's Stamp News* and almost certainly reaches other philatelic venues.

He was honored with the Walter Hopkinson Award in 1984, and has received the VAPEX Service Award and the Phoenix Award. In addition, he was elected to the APS Writer's Hall of Fame.

Hotchner's professional duties as Director of the Office of Policy and Legal Advisory Services in the Bureau of Consular Affairs of the U.S. Department of State have caused him to be less available to philately than he, or we, might like, but somehow he has managed.



*The EFOCC membership  
congratulates John on  
the latest of his numerous  
accomplishments!*

# Exhibiting EFOCC Members

## NOJEX 2004

The EFOCC was strongly represented at NOJEX 2004, which took place at the Crowne Plaza Meadowlands Exhibition Center in Secaucus, NJ, on May 29 through 31, 2004. Here is a listing of EFOCC members who exhibited at NOJEX 2004:

<i>Exhibitor</i>	<i>Exhibit Name</i>	<i>Class</i>	<i>Award</i>
<b>Eliot A. Landau</b>	U.S. Registry System, The First 75 Years	Open Competition	Gold Medal
<b>Eliot A. Landau</b>	The Lincoln Memorial Portrait Issues of 1866-69	Open Competition	Gold Medal & American Philatelic Society Pre-1900 Medal of Excellence
<b>Dr. Carmen A. Puliafito</b>	Independent Mails, 1844-1845	Open Competition	Gold Medal & United States Philatelic Classics Society Medal
<b>Joseph S. Chervenyak</b>	Freaks, Errors & Oddities	Open Competition	Silver Bronze Medal & American Association of Philatelic Exhibitors Novice Award
<b>Alvaro Pacheco</b>	Chile 1900 Surcharge 5	Single Frame Open Competition	Platinum Medal and Best One Frame Exhibit
<b>Joann Lenz</b>	The National One Cent Letter Postage Association (NOCLPA)	Single Frame Open Competition	Gold Medal
<b>Joann Lenz</b>	E-COM and its Forerunners	Single Frame Open Competition	Gold Medal
<b>Joseph S. Chervenyak</b>	German Panzer Division Feldpost	Single Frame Open Competition	Silver Bronze Medal & American Association of Philatelic Exhibitors Novice Award

## INDYPEX 2004

INDYPEX 2004 took place at the Indianapolis Convention Center in Indianapolis, IN, from July 9 through 11, 2004. The EFOCC had the following presence:

<i>Exhibitor</i>	<i>Exhibit Name</i>	<i>Class</i>	<i>Award</i>
<b>Peter G. DuPuy</b>	The 30c and 90c Denominations of the US 1861 Issue	Open Competition	Grand and Gold Medal & United States Philatelic Classics Society Award & United States Stamp Society Award
<b>Alvaro Pacheco</b>	Pre-Philatelic Postmarks of Valparaiso	Single Frame Competition	Vermeil Medal

## Minnesota Stamp Expo 2004

The Minnesota Stamp Expo 2004 took place at the Crystal Community Center in Crystal, MN, from July 23 through 25, 2004. The EFOCC had the following presence:

<i>Exhibitor</i>	<i>Exhibit Name</i>	<i>Class</i>	<i>Award</i>
<b>Alvaro Pacheco</b>	Chile 1900 Surcharge 5	Single Frame Competition	Vermeil Medal

## ROPEX 2004

The Minnesota Stamp Expo 2004 took place at the Webster Community Field House in Webster, NY, from June 18 through 20, 2004. The EFOCC had the following presence:

<i>Exhibitor</i>	<i>Exhibit Name</i>	<i>Class</i>	<i>Award</i>
<b>John M. Hotchner</b>	Worldwide Rarities and Uniquities		Court of Honor
<b>John M. Hotchner</b>	20 <sup>th</sup> Century U.S. Auxiliary Markings Documenting Delay of, or Inability to Deliver, The Mail: The First Fifty Years	Open Competition	Gold Medal & American Philatelic Society 1900-1940 Medal of Excellence & Auxiliary Markings Club Richard B. Graham Award & Rochester Philatelic Association Dusty Miller Award
<b>Douglas N. &amp; Nancy B. Clark</b>	Maine Stampless Period Forwarded Mail	Open Competition	Vermeil Medal
<b>Douglas N. &amp; Nancy B. Clark</b>	Free Markings Used in Maine 1790-1847	Open Competition	Vermeil Medal
<b>Alvaro Pacheco</b>	The Pre-Philatelic Postmarks of Chile	Open Competition	Vermeil Medal
<b>Douglas N. &amp; Nancy B. Clark</b>	P. H. Brennan Hand Delivery Service 1976-1978	Single Frame Competition	Silver Medal

*Congratulations to all our exhibitor members!*





# The Most Unforgettable Character I've Ever Met

Jim McDevitt

Having joined the EFOCC in 1985 and becoming aware of the workload John Hotchner was performing, I volunteered to relieve him of secretarial duties.

Although I started collecting stamps at age 7, in 1940, and lived in the Boston area, I never attended a stamp show until 1986 when I had the great fortune to've been able to travel by train to Chicago and attend AMERIPEX '86. It was there I talked with Mr. Hotchner and he informed me regarding the tremendous EFOCC meeting venue provided during the VAPEX shows in Virginia Beach.

Thus and in November of 1986, my son, David, then 14, and I drove from Boston to Virginia Beach to attend our first EFOCC meeting and staff the show's EFOCC table. At this show, we met an EFOCC Charter Member, one Mr. Clyde Jennings. Later and after having been introduced to Clyde, my son asked, "Does Mr. Jennings have trouble with his vision?". "Why?", I asked. David's response was, "His clothes do not match, the colors are too bright." I believe I responded with, "Well, as a boy he might have been frightened by a parrot".

During the next 10 years, my son - even though he never developed an interest in stamps - traveled to help me staff EFOCC booths at many yearly shows. Of note and during one such incident at a show outside Hershey, Pennsylvania, Clyde was the show's chief judge and when David first saw him he asked, "Dad, is Mr. Jennings sick?" When I asked, "Why?" he replied, "Because he is dressed like a normal person." And, indeed, Clyde was sans his normal flamboyant colors.

In a non-philatelic environment, such as at a Georgia Democratic political fundraiser, I've had the pleasure (and sadness that I didn't have a camera) to've witnessed Clyde's bovine antics. He was fortunate that they kept the bull under lock and key during the ceremony.

One cannot doubt Clyde's ardent commitment to philately. Case-in-point: I sat across from Clyde on a Southwest flight from Jacksonville to Portland, Oregon, to attend a winter APS AmeriStamp Expo. During the entire two legs of the flight, Clyde attempted to convert the male flight attendant to the joys and benefits of philately.

Indeed and with several published works under his belt, Clyde is, indeed, the most unforgettable and pleasant character one might ever wish to meet.



If you are lucky enough to receive a letter from Clyde, you would get to see his fancy letterhead cartoon.

# Perf Orations

John M. Hotchner

jmhstamp@ix.netcom.com

## The ABCs of EFOs

There aren't enough hours in the day to do all the things I'd like to, but one fantasy has visited enough times that I'm hoping to tackle it when I get around to retirement: A synoptic collection of EFO material. In other words, 10 frames of as many different EFO types and causes as can be stuffed into 160 pages.

"There aren't that many different examples," I hear you say? Indeed there are. In my listing for Linn's Almanac of 2000, there are 80 categories of EFOs, and each of those has multiple manifestations and multiple causes. In the realm of stamp separation alone, I already have an exhibit that extends to 250 pages, though about half of that is "normal" or non-US stamps. And I am sure that to be manageable, I will have to limit the synoptic collection to US alone.

So, bottom line, I am convinced, it can be done. I've got a running start. And I will do, eventually, "The ABCs of EFOs". Unless, of course, any of you in the EFOCC are already embarked on this awesome challenge. No need for two people to be doing the same thing, and since it may be years before I get seriously down to work, I'm happy to give the baton to someone else now.

If you want to correspond with me on this subject, drop me a line at P.O. Box 1125, Falls Church, VA 22041, or e-mail me at jmhstamp@ix.netcom.com.

My decision to focus on US EFOs for the ABCs project is pure practicality. It does not mean that I don't enjoy or value foreign EFOs. In fact, some of my best EFOs are foreign examples, and since several readers have written to ask for more illustrations of unusual material, I'm happy to show some of the foreign items I have picked up for my "History of Stamp Separation" exhibit. Unfortunately, that exhibit has not been worked on for about eight years – another looming retirement project.



1958 Panama, vertically imperforate.



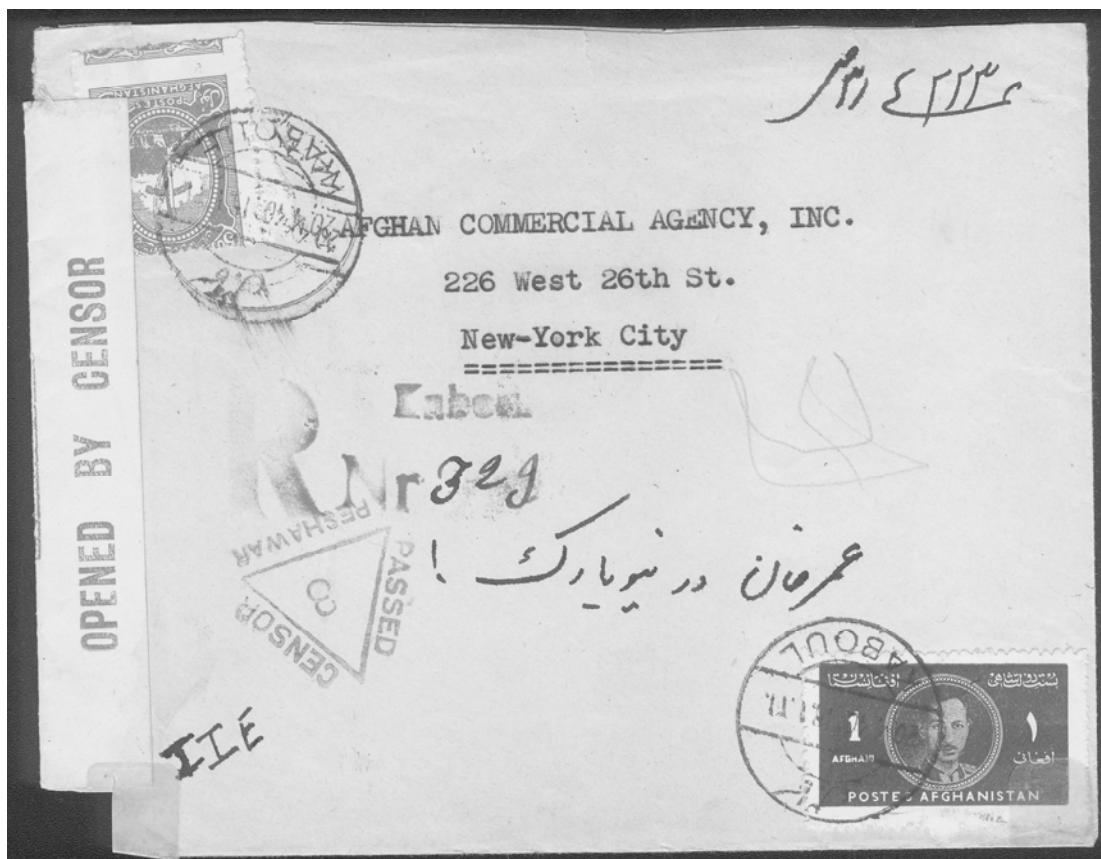
Mexico used perforators of European origin for this "documents and books" 1899-1900 revenue issue. As pins broke or bent, replacements ran short, eventually running out. While awaiting replacement, pins were removed in pattern.



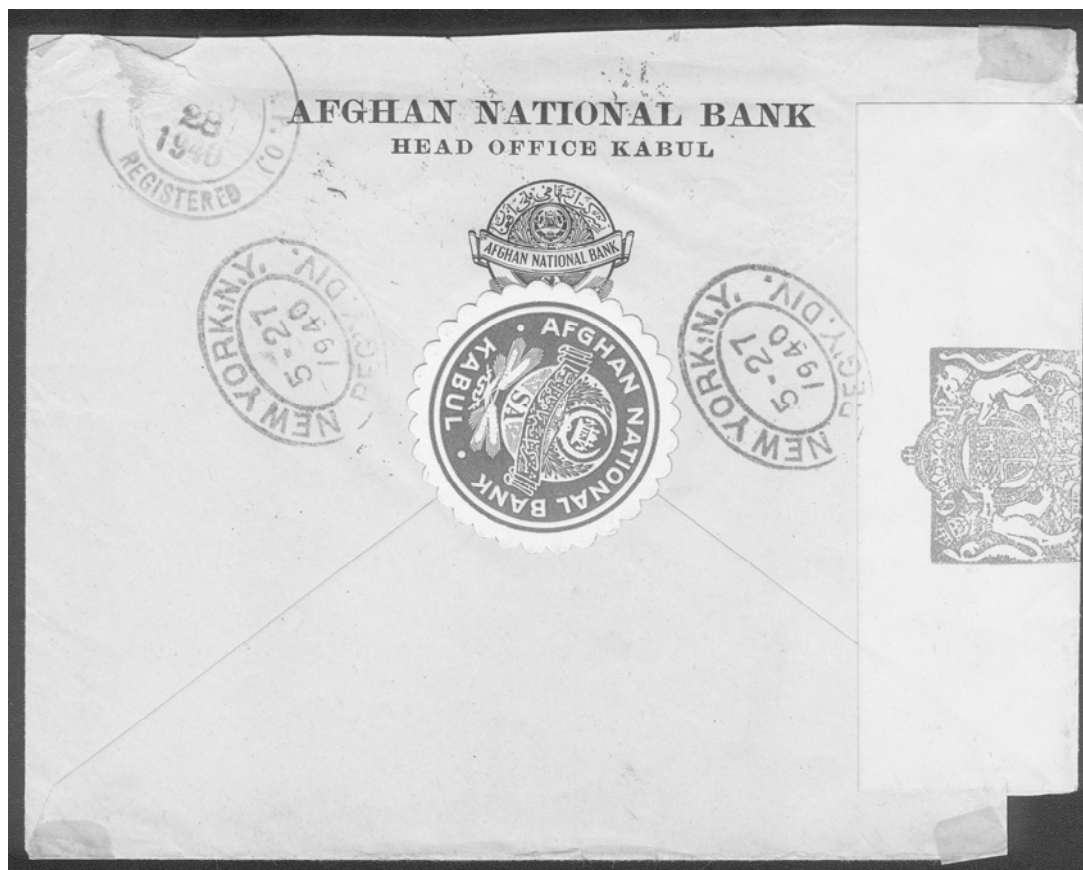
1956 Cuba, imperfs, 80 copies known.

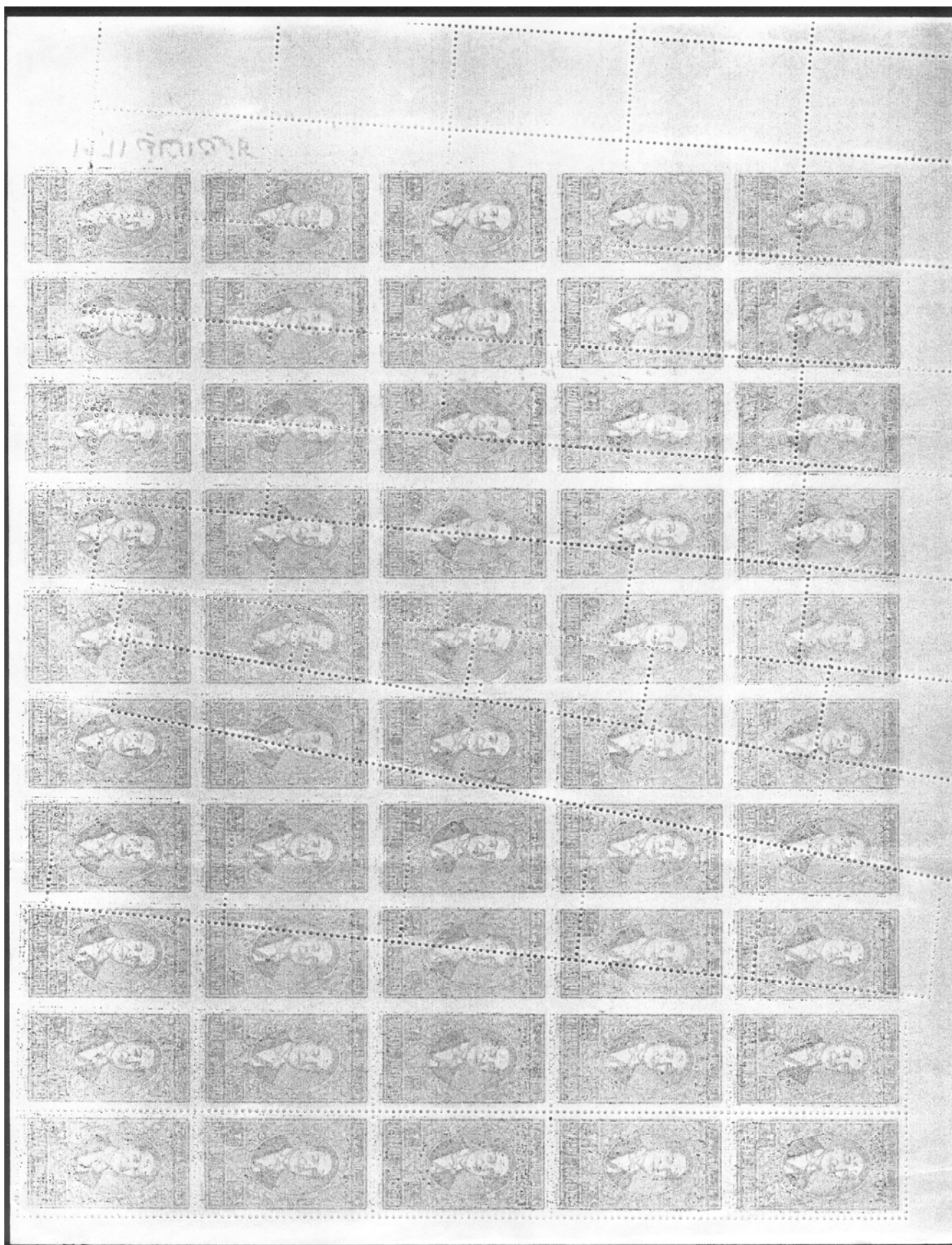


1975 New Zealand, misperf.



Kabul, Afghanistan to New York, 1940, censored in Peshawar, India. Horizontal misperf at upper left. Below, markings on the back of the envelope.





Lebanon 1960: Two “comb” rows of perfs properly placed, 10 “comb” rows misplaced progressively, angled to upper left; such that five stamps are imperf at right, and 40 stamps are grossly misperforated. Shown from the back, so that the perf rows can be more easily seen. Design shows through thin paper.



# 1384: An Interesting Stamp

Stan Goldfarb

Golfar1@ix.netcom.com



I had been out in the business world for a few years and didn't even know what an error stamp was but, because I lived in Baltimore (one of the four cities they put the experimental precancel on) and I was using a number of sheets for postage in my job, I bought many sheets – saving the plate blocks and using the rest for postage.

This issue comes imperf and has several missing colors but this article is about some of the minor errors. The block of four in Figure 1 was purchased at the post office by me (I had 4-5 more, but sold them). The upper left stamp is missing part of the “B”. I also purchased at the post office the plate strip showing a post-printing pre-precancel paperfold (try saying that fast ten times), shown in Figure 2. Note the precancel starts out normal but seems to elongate on the middle stamps. The fold is on the fourth stamps. This is why the precancel is at an angle on the fourth and fifth stamps.



**Figure 1: Upper left stamp missing part of the "B".**

I once saw a sheet with a wonderful diagonal Baltimore precancel leaving one stamp on the sheet completely without it. The dealer was holding two items for a customer who was thinking about buying them. I had no interest in the other item but desperately wanted the sheet. I asked him what he priced it at. He said \$150.00. I would have gladly paid \$500.00. I asked him if would sell it to me at a higher price. He said no. I asked him if I could buy the two items at the price he was holding them for (I figured I'd simply sell the other item). He said no. I asked him at what price would he sell me the two items. He said he would sell it/them to me only after the other person let him know. At the end of the show, I asked him about them. He said the other person bought them. I didn't know whether to congratulate him on his integrity or strangle him. I knew the other person and asked him if I could buy the sheet or part of it. He didn't want to sell but told me what a great deal he got on it. I could have punched him out – if he knew what a great deal he was getting, why did he take so long to buy it – we all know I deserved that sheet, not him (you're not allowed to complain about my sense of humour).

All four cities had precancel printing problems. Figure 3 shows a plate strip where “Memphis” is very light on some of the stamps. Figure 4 shows a plate single missing part of a digit and Figure 5 shows a part plate number strip missing a full digit.

Even today, you probably can find an EFO of this type if you have the time to look (and are lucky).

Figure 6 shows a strong offset of New Haven on the back. Atlanta is also known and Baltimore may be as well but I'm not sure. There are also several small color shifts floating around and small pieces missing; such as, missing a horizontal line in the fence.





Figure 2: Post-printing pre-precancel paperfold.



Figure 3: "Memphis" very lightly printed on some stamps (Perforations cropped on left during photocopying process).





**Figure 4: Part of plate number digit missing.**



**Figure 5: Digit of plate block number missing.**



**Figure 6: "New Haven" offset on back of stamp.**



**Figure 7: Inverted "Baltimore" precancel.**

Figure 7 and Figure 8 show inverted precancels. I just saw the Memphis precancel in eBay with a \$650.00 opening bid from a dealer who should know better (I'll sell mine for half). Figure 9 is the only known misperf on the issue and what a misperf! This was caused by misplaced perf bars. I love this item and still have a few in inventory.



**Figure 8: Inverted "Memphis" precancel.**



**Figure 9: Only known misperforation.**

Figure 10 is an almost perfect set of matching foldover plate strips. The top strip has something else – can you find it. A dealer showed these to me and asked for a price I had to think about (but just for a minute – not hours like that other customer). He knew what he had and knew I would want it. I don't know what I finally paid for it but I learned some time ago that I rarely am unhappy about the price after I buy really rare or unique items.

I'll try to write other articles as I have been a dealer in EFOs (I don't deal in anything else) for over 30 years. I think EFOs are one of the neatest hobbies anyone could have!

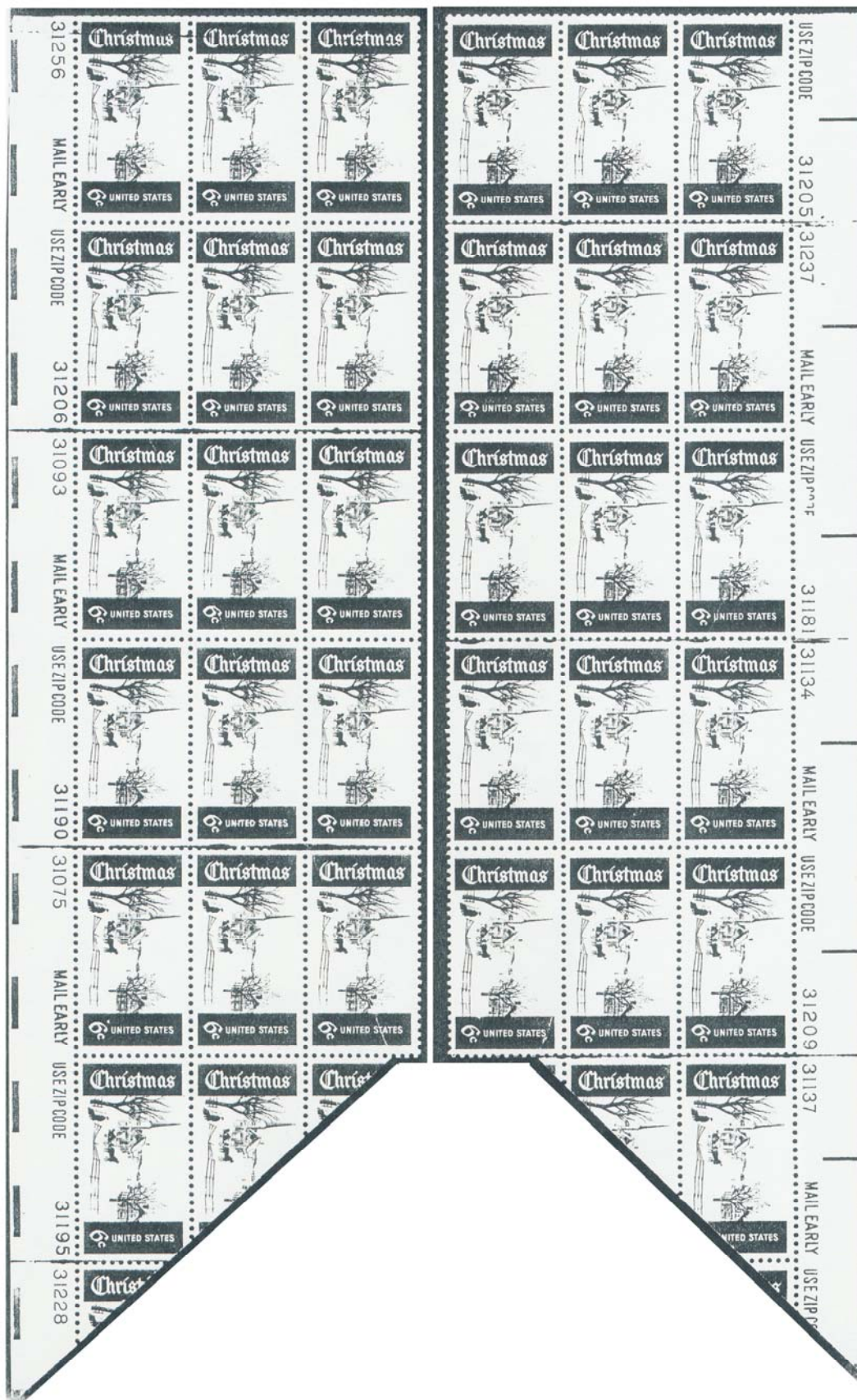


Figure 10: Matching foldover plate strips.

# EFOCC Member Post

Members are entitled to three free listings per year. Please mail or e-mail requests to Editor.

**For sale.** 34c Statue of Liberty (Scott 3477) misperfs, nearly down the center. Pair: \$7.50, strip of 5: \$15, plate strip of 5 (plate 4444): \$35. John Hotchner, P. O. Box 1125, Falls Church, VA 22041-0125. [138]

**Wanted.** EFO material for the 1934-36 U.S. Air Mail Special Delivery Issues – Scott #CE1, #CE2, #771 Farley. No CE2a error needed. **Hideo R. Yokota**, 10 Anita Court, Belmont, CA 94002-2012, hryokota@hotmail.com. [137]

**Will trade!!** BK 143 (D Booklet), Plate #4 on bottom pane for same #1 and MD 1 Blue Booklet (Heroes) with Bunyan in window for in window for White Doll with Plate #1, or River Boat w/Sylvan Dell in window. Ken Moreau, 308 Coronation Road, Franklin, MA 02038. Phone/Fax: (508) 528-9026. [137]

**Money back guarantee.** Send \$15 plus a SASE #10 envelope for an eye catching foreign EFO, which is worth \$50 to \$75. If not satisfied, return EFO within 10 days for full refund. **Howard Frank**, P. O. B. 340868, Brooklyn, NY 11234. [136]

Every EFOCC member is entitled to three free 35 word listings per year in the EFOCC Member Post. To use your free listing in the EFOCC Member Post, please complete this form, and mail it to the Editor ASAP. If you wish, you can also e-mail your request to the Editor.

---

---

---

## Help With Members' New Projects

Free listing – Please mail or e-mail requests to Editor

~

If you would like a free listing in the EFO Collector to help you with a new EFO project, please complete this form, and mail it to the Editor ASAP. If you wish, you can also e-mail your request to the Editor.

I am looking for \_\_\_\_\_

---

---

Name, address, e-mail: \_\_\_\_\_

---



# Meeting Your Fellow Members

Stan Raugh

trex@bigplanet.com

## Alvaro Pacheco, Chile 1900 Surcharge 5 Specialist

One of the great attributes of philately is that not only are there so many specialties available to collect...there are also many ways to collect.

Our fellow member this month has a very focused approach to the hobby. Alvaro Pacheco is an accomplished philatelist who takes pride in creating exhibits that are praised for their excellent presentation.

"I am more an exhibitor than a stamp collector," he states, "I select a stamp or period of stamps and with them I prepare an exhibit."

"I have been participating in stamp shows for over 25 years and when an exhibit cannot be developed any further, I sell it and start a new one," says the 67-year-old New Yorker, now retired and living in Florida.

His experience is deep—he actually entered the hobby about 50 years ago.

Regarding his exhibiting, "my first interest was animals, then space followed by Shanghai Local Post, Liberated Areas of Peoples Republic of China, then Peoples Republic of China and now Chile," he notes.

Why these areas and topics? "Simply because they were very inexpensive at the time I purchased them," says Pacheco.

He does not consider himself an EFO collector as such, saying "they are just one more element that added to...the development of any stamp exhibit," such as specimens, proofs, covers do.

This is probably the way many of our members collect. The interesting EFOs supplement whatever else is in our collection.

"At this time I am showing Chile and have five different exhibits in this area. One of them is the Chile 1900 Surcharge 5," he explains.

"This exhibit has numerous EFOs and since I was given first prize by the club I decided to join," says the master exhibitor also known for his friendly nature.

The EFO Collector

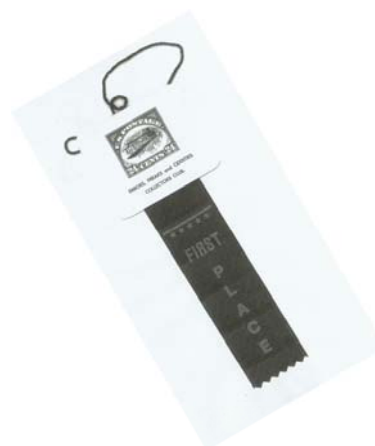
At the May 29-31 NOJEX show, this display won the Grand Award for the One Frame Exhibit and Platinum award.

In early 2003 at the APS AmeriStamp Expo, the same exhibit won the Single Frame Reserve Grand, the Medal of Excellence, the Special Award and a Platinum. It also had won a Platinum at FLOREX in 1998.

Our editor shared with me that of 16 pages, this exhibit has seven pages devoted to errors. Several errors are new discoveries made by Pacheco.

As a treat for our readers, much or all of the exhibit may appear in the pages of this journal.

And a special thanks to all philatelists who are willing to invest many hours in the research and development of any specialized exhibit...especially when it has EFOs.



# My Favourite EFO

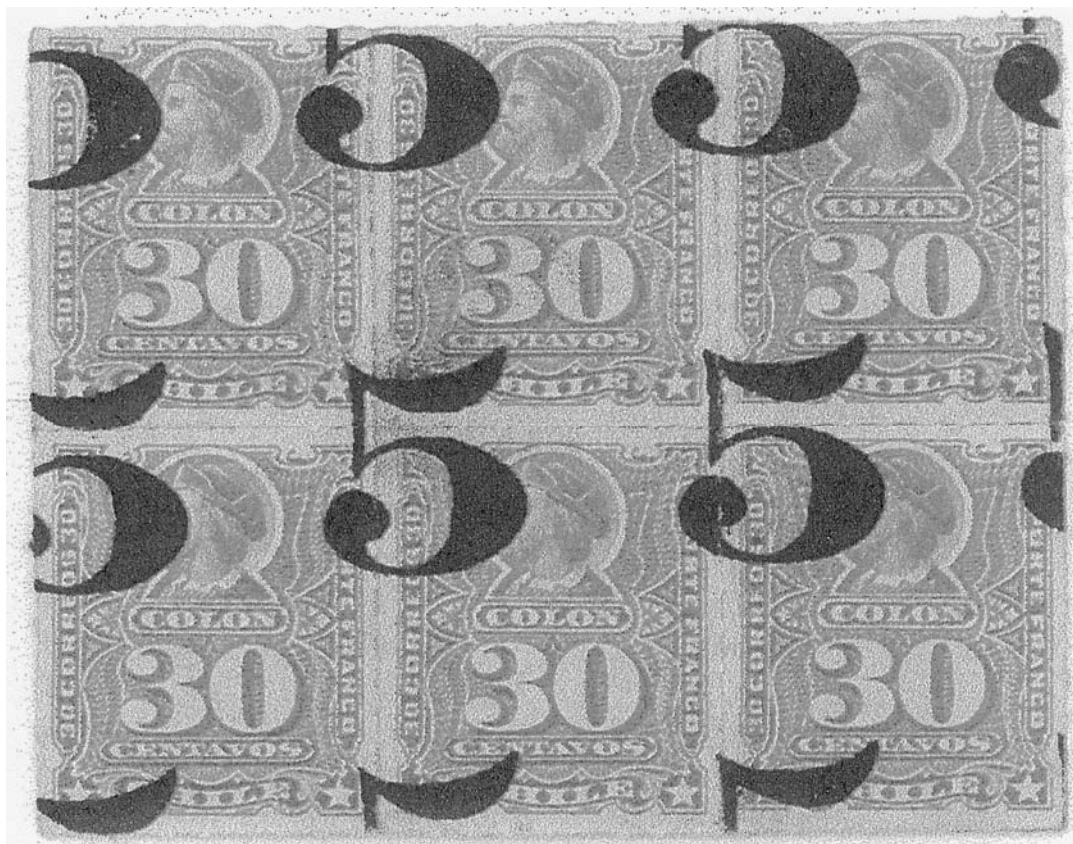


This issue's favourite EFO comes to us courtesy of member Alvaro Pacheco.

Alvaro likes the Chile 1900 5-cent surcharge so much that he has over 50 exhibit pages with all kinds of variations of the stamp. His main exhibit, 16 pages depicting this one stamp, won 4 platinum medals, the last at NOJEX 2004, in addition to being named the "Best Exhibit" at NOJEX 2004. 7 of his 16 pages contain errors (i.e. EFOs), so his exhibit is particularly interesting for our membership. We should also mention that the exhibit was also recognized by none other than the EFOCC, with a 1<sup>st</sup> place ribbon at AmeriStamp in March 2003. The publication "Chilean Specialist" dedicated all 30 pages of its issue number 46 to Alvaro's exhibit.

Alvaro was good enough to provide us two pages from his exhibit, and we show them on the following pages. We hope to present more in the future. Your Editor was fortunate enough to speak with him. He shared two characteristics of a world-class exhibit:

- Very rigorous study of the subject stamp, demonstrating how a single stamp can be developed to create a whole exhibit.
- Attention not only to technical details, but also to presentation aesthetics. I submit to you that even a non-specialist, or even a non-collector, would find these pages attractive.



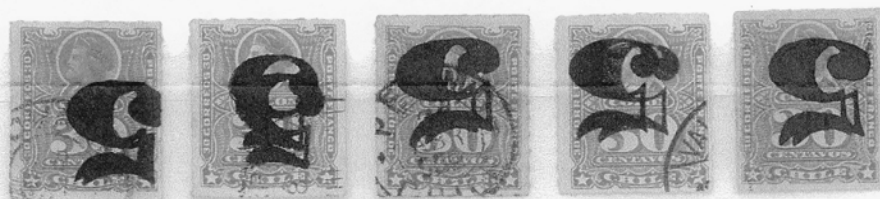


# CHILE 1900 SURCHARGE 5



## DOUBLE SURCHARGE, BOTH INVERTED

Less than 10 known to exist and has never been found on a cover.



## FORGERIES OF A DOUBLE SURCHARGE, BOTH INVERTED

As rare as the originals. The cancellation probably from an inverted surcharge stamp.



## TRANSVERSAL SURCHARGE

Unique error unlisted in all catalogs except in W. B. Haworth, "Chile, An Outline of the Postal Issues 1766-1919".



## DOUBLE SURCHARGE, ONE TRANSVERSAL

Only one known



## SURCHARGE ON BACK

Only two known

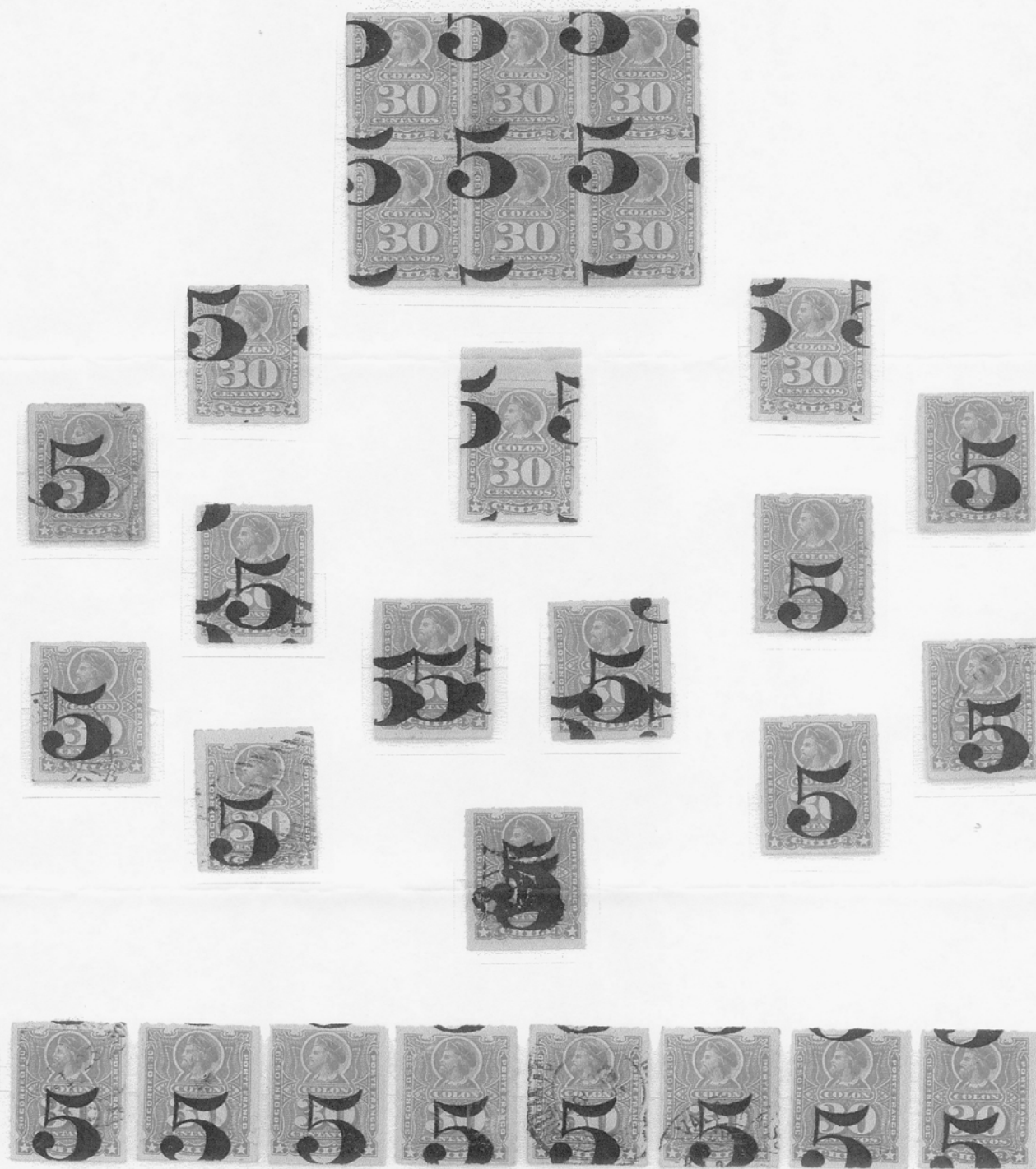


## FORGERY OF SURCHARGE ON BACK

Only one known

CHILE 1900 SURCHARGE 5

DISPLACED AND MULTIPLE SURCHARGE



Different grades of displaced surcharge to the point of showing on top of the stamp  
what is missing at the bottom

Thanks, Alvaro!

# Auction 97: Closes on October 31, 2004

## How to Bid

Please bid on a consignment form from a recent EFO Collector. A photocopy is fine. Include your EFOCC membership number. For new bidders and non-EFOCC members, please include your APS membership number. Sign your bid sheet to acknowledge acceptance of the EFOCC auction rules; unsigned forms can not be accepted. Submit bids to McDevitt, 955 South Grove Blvd., Lot 65, Kingsland, GA 31548-5263 - or - e-mail to [cwouscgr@gate.net](mailto:cwouscgr@gate.net). Confirm e-mail bids with a written bid sheet.

## Bidding Precautions

Minimum bids are not estimates, but are true reserves established by the consignors. Bids below the listed reserve will not be accepted.

Bidders are responsible for inaccurate bids. Bids do not have to be typed, but, please, be sure numbers and amounts are clearly legible.

## Auction Bid Increments

Please use the following increments when bidding and/or assigning reserves to consignments. Lots are sold to the highest bidder at one advance over the second highest bid.

Bid Level	Increment
\$1 to \$9.99	\$0.50
\$10 to \$49	\$1.00
\$50 to \$99	\$2.50
\$100 to \$499	\$5.00
\$500 and up	\$10.00

EFOCC reduces non-conforming bids to the next lower increment. For example, a bid of \$39.50 will be entered as \$39.00.

## Do Not Use Special Bidding Instructions

As the EFOCC auction is a small auction, special instructions can not be easily accommodated. EFOCC can not accept "BUY" bids, nor "INCREASE BY...%" bids. Please, make your final, best, and highest bid and you will get the lot at the lowest price available.

## Bidders' Payments

A 10% buyer's premium is added to the hammer price of each lot. Buyers pay postage, plus insurance on lots valued at over \$10.00.

Payment is due upon receipt of invoice. If you will be out of town for a while just after an auction closes, or are moving to your summer home about that time, please let EFOCC know at the time you place your bids.

## Returning Lots

Within five (5) days of receipt of awarded lots, you may return any lot which is not described correctly provided such lot is still in its original condition. If an expertising certificate is a condition of bidding, please inform EFOCC of this before auction closes.

## Preparing Lots

Please use a blank form from, such as contained in a recent copy of the *EFO Collector*. Photocopies are fine. Please use a separate form for each lot.

Secure each lot to the front of the form; attach large lots to the reverse side. Protect all items with mounts, glassine, etc., and stiffeners, if necessary, but be sure item/items can be easily removed by Auction Director for examination and/or photographing. Do not use staples. Attach each item so that the description can be easily read. A simple and easy way to mount lots is to do so on dealer sales cards, or in glassines mounted face down for easy removal.

Include a reserve (minimum bid) or write "none". Lots may be revised to accurately describe items; or returned if necessary. Your name and EFOCC number must be on the consignment form, however, to preserve anonymity, these are removed from the consignment sheet before sending item to successful bidders.

Send consignments to McDevitt, 955 South Grove Blvd., Lot 65, Kingsland, GA 31548-5263. Use insured or registered U. S. Mail.

## Consignor Fees

Consignor commission is 10% of the hammer price, with a minimum bid of 50 cents per lot.

Unsold lots incur a 50 cent fee per lot, and the consignor pays return postage and insurance.

Expenses and printing constraints make it impractical to picture every lot, especially those which are large in size. The EFOCC will exercise discretion in picturing lots.

## Consignor Special Instructions

To save postage and labor, EFOCC can automatically re-submit unsold lots with lower minimums in a future auction, if you instruct EFOCC clearly what to do.

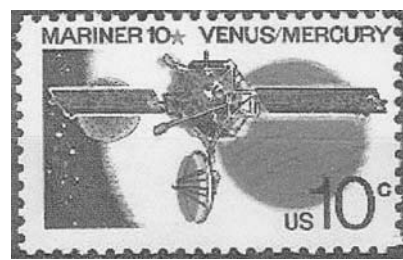
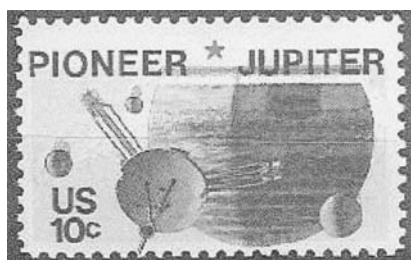
If you send duplicate or very similar lots, it is consignor's responsibility to state clearly, if you would like to have these placed in different sales. Generally, EFOCC places all items received in the same sale to minimize paperwork.

## Consignment/Payment Timing

EFOCC receives consignments continually and prepare them for subsequent sales, roughly on a first in first out basis. However, large lots may be spread over several auctions.

After the close of each sale, unsold lots are offered to bidders on a first come-first served basis for \$1 over the reserve with no buyer's commission or postage. This increases total sales, makes more bidders happy, and sells more lots for consignors, all for very little additional effort.

EFOCC needs approximately one month after auction's closing date to determine successful bidders, prepare and mail invoices, mail lots, receive payment from winners, list after sale lots and accept their offers, etc., etc. Thus, consignors can expect to receive payment about four to six weeks after an auction closes.



# Auction 97 closes on October 31, 2004

Lot #	Catalog	EFOCC Auction #97 Description	Cat Val	Min Bid
1	2178	17c Lockerwood, hor. Misperf, SCARCE!!		\$11.00
2	C25	6c Air Mail, horizontal perf shift		\$3.00
3	1903	9.3c Mail Wagon, miscut coil		\$6.00
4	1906	17 Elec. Auto, miscut, bottom of wheels on top		\$2.00
5	1900	5.2c Sleigh, miscut pair		\$10.00
6	1857	17c Carson, hor. Misperf - GREAT MISPERF!		\$18.00
7	1854	11c Partridge, horizontal misperf		\$9.00
8	1597	15c Flag, missing red on top four stripes		\$18.00
9	1618c	<b>15c Flag, miscut pair</b>	<b>\$25.00</b>	\$15.00
10	1288	15c Holmes, horizontal misperf		\$11.00
11	1730	13c Christmas, black color shift		\$5.00
12	1722	13c Bicentennial, vertical angled misperf		\$25.00
13	1735	A Eagle issue, misperf		\$8.00
14	1759	15c Viking Mission, color shift		\$13.00
15	1632	13c Interphil, color shift		\$5.00
16	1618c	<b>15c Flag, miscut pair</b>	<b>\$25.00</b>	\$15.00
17	1701	13c Christmas, misperf		\$11.00
18	1731	13c Carl Sandburg, misperf		\$10.00
19	1754	13c Early Cancer, misperf & change of design		\$12.00
20	1732	13c Capt. Cook, misperf with part stamp from pane below		\$15.00
21	1560	10c Salem Poor, misperf, change of design		\$15.00
22	1555	10c Griffith, very nice brown misregistration		\$15.00
23	1556	10c Pioneer, red color shifted up		\$9.00
24	1556	10c Pioneer, red color shifted down		\$9.00
25	1551	10c Christmas, shifted horizontal perforations		\$8.00
26	1529	10c Skylab, shifted vertical perforations, SCARCE!!		\$5.00
27	1528	10c Horse Racing, shifted hor. Perforations		\$3.00
28	1525	10c VFW, shifted hor. Perforations, blue ghosting		\$8.00
29	1726	13c Drafting Articles, shifted verticle perforations		\$8.00
30	1725	13c Alta, CA issue, GREAT black color shift		\$27.00
31	1683	13c Telephone Cent., change of design		\$18.00
32	1561	10c H. Salomen, shifted hor.perforations		\$10.00
33	1505	10c Rural America, upward shift of black reistration		\$12.00
34	1557	10c Mariner, blue color shifted upwards		\$5.00
35	1576	10c World Peace, shifted hor. Perforations		\$6.00
36	1561	10c H. Salomen,yellow color shifted down		\$8.00
37	1690	12c Bicentennial, downward shift of blue		\$10.00
38	1721	13c Peace Bridge, shifted hor. Perforations		\$2.00
39	1702	13c Christmas, small color shift blurs figures		\$2.00
40	1727	13c Talking Pictures, very nice black color shift		\$15.00
41	2561a	<b>29c Dist. Of Columbia, black omitted</b>	<b>\$125.00</b>	\$75.00
42	2279a	<b>E Rate Earth, imperf coil pair</b>	<b>\$90.00</b>	\$60.00
43	3466	34c Statue of Liberty, coil, vert die cut shifted 60% left		\$8.00
44	1615cf	8.4c Piano, imperf precancel coil pair		\$15.00
45	1384	6c Christmas, inverted Baltimore, MD cancel		\$15.00
46	1479	8c Drummer, diagonal horizontal perforations		\$10.00
47	1479	8c Drummer, misperf, change of design		\$20.00
48	1501	8c Progress in Electronics, black lettering shifted down		\$15.00
49	2603a	<b>Bulk Rate Eagle &amp; Shield, imperf pair</b>	<b>\$30.00</b>	\$18.00



Lot #	Catalog	EFOCC Auction #97 Description	Cat Val	Min Bid
50	76	<b>5c Jackson, used, hor. perforations shifted up 2mm</b>	<b>\$110.00</b>	<b>\$50.00</b>
51	2603a	Bulk Rate Eagle & Shield, imperf plate strip of 5		\$75.00
52	1895d	20c Flag/Supreme Court, imperf pair	\$10.00	\$7.00
53	3466	34c Statue of Liberty, strip of 5, die cuts shifted 60% left		\$35.00
54	1904	10.9c Hansom Cab, vert perfs shifted 50%		\$15.00
55	2609a	<b>29c Flag over White House, imperf strip of four</b>	<b>\$40.00</b>	<b>\$18.00</b>
56	1895d	20c Flag/Supreme Court, imperf pair	\$10.00	\$4.00
57	1895d	20c Flag/Supreme Court, imperf pair	\$10.00	\$4.00
58	1288	15c Holmes, strip of 5, vertical misperfed		\$5.00
59	1519a	<b>50 &amp; 13 Star Flags, joint linr pair unlisted in Scott</b>	<b>\$70.00</b>	<b>\$25.00</b>
60	2609a	29c Flag over White House, imperf strip of four	\$40.00	\$18.00
61	2609a	29c Flag over White House, imperf pair	\$20.00	\$10.00
62	3477	34c Statue of Liberty, misperfed pair		\$9.00
63	3477	34c Statue of Liberty, puff of smoke by large flame		\$17.00
64	3477	34c Statue of Liberty, misperfed strip, pl #4444		\$50.00
65	1543-6	10c Bicentennial, blk 4, misperfed		\$45.00
66	2259	13.2c Coal Car, shifted verticle perforations		\$3.00
67	2112	D Rate, shifted vericle perforations		\$5.00
68	1804a	<b>15c Banneker, hor, pair, imperforated vertically</b>	<b>\$800.00</b>	<b>\$350.00</b>
69	1510	10c Jefferson Memorial, misperforated		\$11.00
70	1432	8c Bicentennial, change of design		\$12.00
71	1287	13c Kennedy, misperf creates 3 cent variety		\$5.00
72	1734	13c Indian Penny, very under inked - RARE!		\$6.00
73	1705	13c Centennial of Sound, very nice color shift		\$10.00
74	1552	10c Christmas, green color shift, adhesive discoloration		\$20.00
75	1506	10c Rural America, downward black sift		\$10.00
76	1727	13c Movie Projector, misperfed, RARE!		\$14.00
77	C73	10c Stars, misperfed pare, SCARCE!		\$10.00
78	1908	20c Fire Pumper, misperfed pair		\$10.00
79	2149a	18c Washington, Pre-Sort 1st class, misperfed		\$7.00
80	2463	20c Cog Railway, misperfed		\$11.00
81	2607	23c USA, Pre-Sort 1st class, misperfed		\$9.00
82	1021	5c Opening of Japan, misperfed - SCARCE!		\$13.00
83	1613	3.1c Guitar, misperf, 1st printing, deep canary paper		\$20.00
84	1055	2c Jefferson, misperfed line pair w/partial plate number		\$10.00
85	1230	5c Carolina Charter, misperforated		\$17.00
86	1233	5c Emancipation Proclamation, downward shift of black		\$12.00
87	1203	4c Hammaraskjold, black color shift looks like misperf		\$22.00
88	954	3c California, misperf - SCARCE!		\$12.00
89	2351a	22c Lacemaking, upward shift of white lace		\$45.00
90	2096b	<b>20c Smokey, vert pair imperf btw., small crease at top</b>	<b>\$250.00</b>	<b>\$80.00</b>
91	1510	10c Jefferson, guttersnipe, top row perfs are hinged		\$35.00
92	C78a	11c extra wide pane with EE bars		\$25.00
93	1597a	<b>15c Flag, imperf block of 4</b>	<b>\$40.00</b>	<b>\$15.00</b>
94	1775a	15c Folk Art, misperfed block		\$20.00
95	2518a	<b>F rate Flower, imperf pair</b>	<b>\$42.50</b>	<b>\$20.00</b>
96	1843a	<b>15c Christmas, imperf pair</b>	<b>\$70.00</b>	<b>\$25.00</b>
97	2004	20c Library of Congress, misperfed, change of design		\$11.00



Auction 97 closes on October 31, 2004



Auction 97 closes on October 31, 2004





Auction 97 closes on October 31, 2004

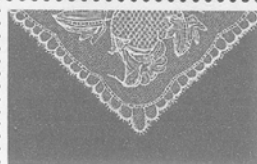


Auction 97 closes on October 31, 2004





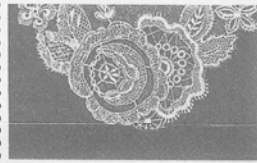
©  
United States  
Postal Service  
1986



Lacemaking USA 22



Lacemaking USA 22



Lacemaking USA 22



Lacemaking USA 22



90

89



91



92



93



94



95



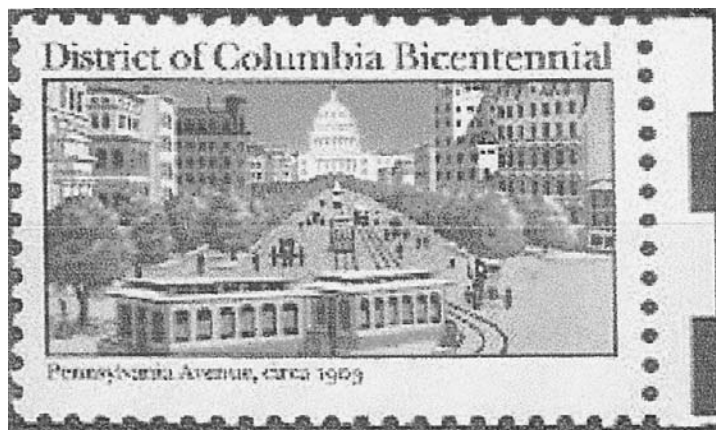
96



97



Lot 68

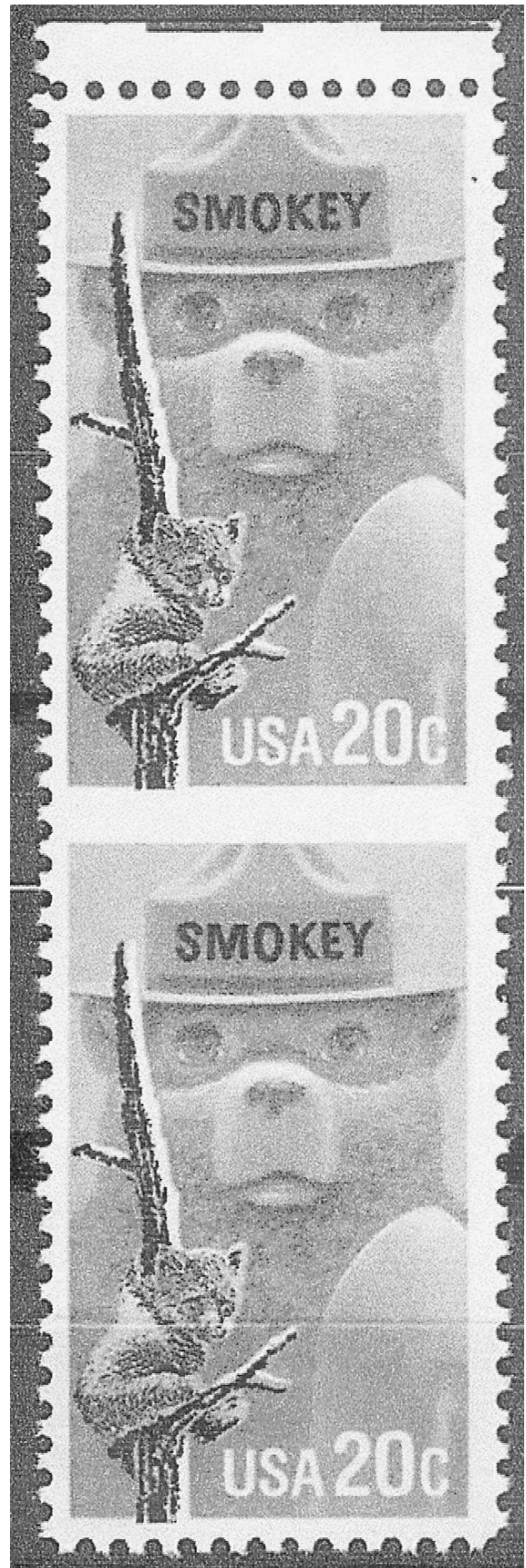


Lot 41



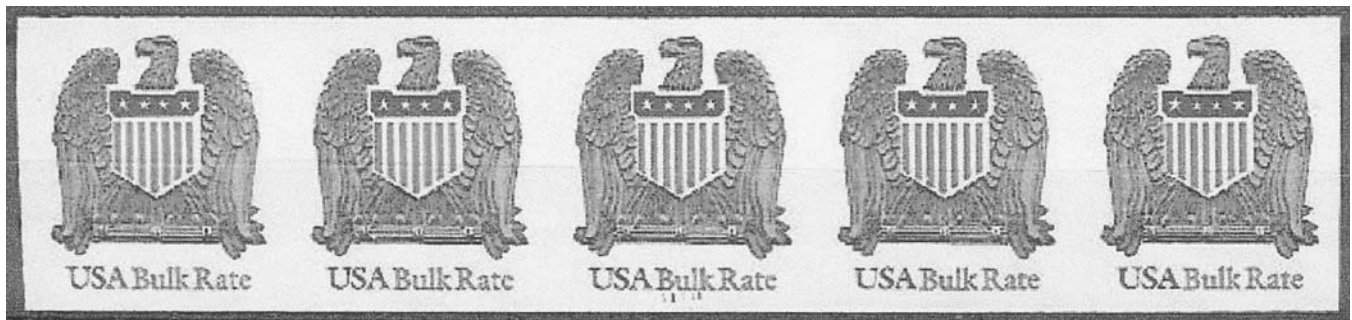
Lot 42

Auction 97 closes on  
Halloween Day 2004



Lot 90





Lot 51



Lot 50



Lot 45: Inverted Baltimore precancel.

Auction 97 closes on  
October 31, 2004



Lot 64



Lot 53





# Endnotes

In our last issue, we had two pictures from member Bert Freese's "collection" on pages 4 and 5. Some members thought that they had been fooled. Actually Bert was having fun with his stamps by putting together montages of regular stamps and EFOs. What was your take? Your Editor's thinking was that our membership is generally knowledgeable enough to realize that some combinations are just not possible. Did you also get the impression that you were fooled? Let me know... In the meantime, we present below two more additional "Bert-Orations." Either you will laugh more, or you will continue to complain about your Editor's poor taste...



Finally, below are some additional variations of 1384, provided by our Vice-President John Hotchner. On the left is an inverted Baltimore precancel block, compare with Figure 7 on page 26, but unlike Figure 7, the precancel is not shifted. Also, if you look really carefully, the lower left stamp is missing the light green color. Finally, on the right, one with light green color omitted. The green bushes in the background, stretching from the roof of the house to the tree on the right are not as marked in the black-and-white reproduction as in the original.



# Buyers and Sellers of EFO Material

To sell or buy EFO material, contact any of the following buyers/sellers of error, freak, oddity philatelic material. **Remember:** To offer for confidential outright purchase or sale at a public auction, it's best to first send a description and/or clear photograph, photocopy or scan before shipping the item. **Do not forget** to include your address, telephone number, e-mail and return postage/s.a.s.e.

Ag, P. O. Box 1, Medford, NJ 08055	(609) 654-7415
Back Stamp Auctions, P. O. Box 2056, Mesa, AZ 85214-2506	(480) 969-5835
Steve Crippe, Inc., P. O. Box 23413, Tampa, FL 33623 www.stevetricppe.com	(813) 878-9845
Howard Frank, P. O. Box 340868, Brooklyn, NY 11234 ( <i>Foreign EFOs only</i> )	
Stan Goldfarb, 8520 Atwell Road, Potomac, MD 20854	(301) 279-0754
Bob Dumaine (Sam Houston Philatelics), P. O. Box. 820087, Houston, TX 77282 www.shduck.com	(800) 231-5926
John Hotchner, P. O. Box 1125, Falls Church, VA 22041	(202) 663-2427
John Koval, P. O. Box 83, Griffith, IN 46319	(219) 924-4836
Leo Malz & Co., 425 Broadway, New York, NY 10013	(212) 877-7223
Montclair Stamp Co., P. O. Box 38, Cheltenham, PA 19012	(215) 728-7836
J. Nalbandian, P. O. Box 71, E. Greenwich, RI 02818	(401) 885-5020
Princeton Philatelics, P. O. Box 304, Tappan, NY 10983	(845) 359-7434
Jacques C. Schiff, Jr., 195 Main Street, Ridgefield Park, NJ 07660-1696	(201) 641-5566
Martin Sellinger, P. O. Box 47, White Plains, NY 10602-0047	(914) 948-4246
Saskatoon Stamp Centre, Box 1870, Saskatoon, SK Canada S7K 2S2 ( <i>BNA and Canada varieties only</i> ) www.saskatoonstamp.com	(800) 205-8814
Thomas E. Smith, P. O. Box 23149, Phoenix, AZ, 85063-3149	(623) 205-1163
Stephen Wittig, P. O. Box 2742, Springfield, MO 65801	(417) 831-8746
Victory Stamps, P. O. Box 1129, Mt. Pleasant, SC 29465	(843) 849-6713
Weiss Philatelics, P. O. Box 5358, Bethlehem, PA 18015	(610) 691-6857

List updated: June 30, 2004. Please send changes to Editor. Also, e-mail or write to Editor if you would like to add an e-mail address or web site to your listing.

**The EFO Collectors' Club**  
4217 8<sup>th</sup> Avenue  
Temple, PA 19560

**PERIODICAL/DATED MATTER  
POSTMASTER, DO NOT  
DELAY DELIVERY**

*Return Service Requested*

*The Auction is  
BACK!!!*