

The EFO Collector

*The journal of philatelic errors, freaks and oddities,
published by the EFO Collectors' Club, a nonprofit organization.*

Initiation fee, \$1. Annual dues, \$12, U.S. and Canada; Overseas, \$25.

Copyright 1992 by the EFO Collectors' Club.
APS Affiliate No. 103. Member COPO.

President, Editor: Howard Gates

Vice-President: Louis E. Repeta

Volume XIV, No. 5 (#81)

April 1992

Founded 1978

Our Executive Search Program Stalls--

You'll notice something odd about the ballot for election of EFOCC officers on page 16: There's no candidate for President. Our Nominating Committee came up with some very good possibilities, all of whom quietly declined. Our constitution forbids me from continuing in the office after June 30, even if you wanted me and I wished to continue.

It seemed unwise to further delay this issue of *The EFO Collector* in the hope the Committee would find a candidate to place on the ballot, so here it is. Perhaps the June issue will contain better news.

You will note that you are asked to vote for (or affirm) two of the three candidates for Executive Board Member at Large. Under the current (very awkward) constitutional process, all three candidates have been screened twice: first, by the current Executive Board, and second by the Nominating Committee. Therefore, their biographies are not presented. It appears that two Members at Large will be needed-- and perhaps a third as well-- to bring the Board complement to seven.

--Howard Gates

Contents--

From the Editor	2
Foreign EFOs Featured in the Philatelic Press	3
Strange Used Flag Coils	6
Keep Showing Up	
Report From Nashville	6
EFO Post	13
John Hotchner Wins 1991 Robert E. Manning Award	14
Secretary's Report	14
Auction 58 Prices Realized	14
Letter From Romania	15
Election Ballot Biographies	15
The New World	16
Discovers Columbus	
Election Ballot	16
Auction #60	18

Mosher: Booklet Error/Freak Polygon Oddity	8
Panes (bEFpOps): The "Final Exam" Results	

Page 15



Goodbye, Columbus--

(Inspired by the conjunction of March 17, April 1, and the quincentennial.)

A while ago I was in Spain, digging for my roots. The shades of my grandmother, Victoria Guilbert y de Niebla, urged me to look in the town of Niebla, west of Sevilla. I explored the massive Moorish walls and the cathedral, but it was in the dirt-floored saloon that I learned that the town's only Niebla family had moved to Barcelona. I gave up and drove west to Huelva and Palos. At La Rábida Monastery I was shown a conference room furnished with an ancient refectory table and high-backed wooden chairs where, the guide said, Christopher Columbus had sat with his captains, working out the details of their prospective journey to the unknown. I was totally awed.

But I have come to believe that the Irish discovered and settled America long before Columbus. Ancient artifacts abound to prove it. I've found charred remnants of a clay pipe in the ashes from my Los Angeles incinerator; in San Diego, a rusty disk at least a thousand years old, bearing the barely legible legend, "Kiss Me, I'm Irish;" an ancient decayed board floating in our lake in Virginia saying, in Celtic cipher, "And if you inherit a donkey, may it be in foal." But the clincher, and one that dates the Irish discovery, is the antique Irish whiskey bottle that I found in a construction excavation right across the street here in Florida. The label carries the date "750 ml," and that's a full 742 ml before Columbus.

--Howard Gates

ALL CONTENTS COPYRIGHT 1992 BY THE EFO COLLECTORS' CLUB. Authors and contributors have express permission to reuse any of their material elsewhere without restriction. Except for material reprinted herein, or material individually copyrighted by the author, material herein may be reprinted elsewhere as long as full credit is given to *The EFO Collector*, citing the issue date and number, and giving the address of the EFOCC secretary.

The EFO Collector is published six times yearly in even-numbered months. The deadline for any issue is the 15th of the month preceding the month of issue-- e.g., May 15 for the June issue. Send editorial material directly to the editor.

Membership includes subscription to *The EFO Collector*. Application for membership, accompanied by \$13 (\$26 overseas) to cover the first year, should be sent to the Secretary.

Advertising for *The EFO Collector* will be accepted at the following rates: first insertion-- full page, \$30; half page, \$16; quarter page, \$9; classified ads, 6c per word. Discounts on subsequent insertions of the same ad: second insertion, 5%; third, 10%; fourth and subsequent, 20%. The first insertion must be fully prepaid. Deadline for ad copy: tenth of the month prior to the month of issue. Advertisements, ad payments and related inquiries should be directed to the Advertising Director.

EFOCC members are entitled to three free 35-word (excluding address) classified ("EFO POST") ads annually. These should be sent directly to the editor.

1990-1992 EFOCC OFFICERS AND CHAIRMEN

PRESIDENT

Howard P. Gates, Jr.
135 Hacienda Drive
Merritt Island, FL 32952
Phone: 407-454-3772

VICE-PRESIDENT

Louis E. Repeta
P.O. Box 16058
Charleston, SC 29412

TREASURER

Donald C. Reinke
484 Kingsford Drive
Moraga, CA 94556
Phone: 415-376-8994

SECRETARY

CWO James E. McDevitt, USCG Ret
1903 Village Rd., W.
Norwood, MA 02062-2524
Phone: 617-769-6531

BOARD MEMBER AT LARGE

Earl K. McAfee
1912 Rebecca Drive
Champaign, IL 61821

EDITOR

Howard P. Gates, Jr.
135 Hacienda Drive
Merritt Island, FL 32952
Phone: 407-454-3772

ADVERTISING DIRECTOR

Dennis Ryan
120 E. St. Lawrence Ave. #213
Janesville, WI 53545

AUCTION DIRECTOR

Edward T. Close
2 Elm Lane
Williamson, NY 14589
Phone: 315-483-2599

BOARD MEMBER AT LARGE

Bruce H. Mosher
P.O. Box 033236
Indianapolis, FL 32903
Phone: 407-723-7886

BOARD MEMBER

Scott A. Shaulis
Arbutus Village DS, Elgin Dr.
Johnstown, PA 15904

Foreign EFOs Featured In the Philatelic Press--

Stamp Collector, in its February 8, 1992 issue, presented three articles that featured significant foreign errors.

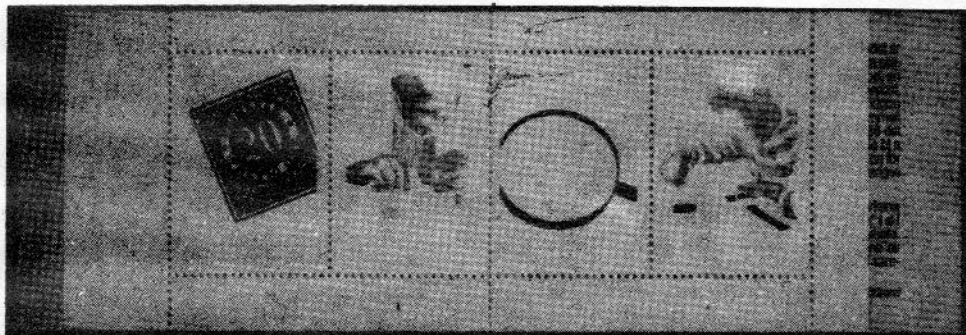
Swedish columnist Christer Brunstrom has often remarked on the frequency of United States stamp color and perforation errors and the relative infrequency of such errors on Swedish stamps. He's right, of course; and he points out that, in the U.S., "this has led to a new collecting specialty." [That's us.] But, as he says, "No system is perfect," and illustrates his statement with the spectacular Swedish January 23, 1986 STOCKHOLMIA '86 booklet error shown here. Only the offset orange and light blue were printed on the pane. All the intaglio printing-- blue, green and violet-- is missing. At least error booklets are in the philatelic marketplace.



*England World-Cup Winners 1967
commemorative from Maldives Islands,
left stamp missing country and value*

Stamp Collector also published a report by Sam Houston Duck Co. owner (and EFOCC member) Bob Dumaine of the finding of "a single sheet of the 1990 Australian Federal Duck Stamp \$8 overprint. . . with the sheet inverted."

James Jude, executive director of the Australian Wildlife Fund, explained the



*Swedish STOCKHOLMIA '86
booklet pane missing
intaglio blue, green
and violet*

What makes this particularly fascinating is that the third stamp in the booklet was a joint issue with the United States; the U.S. version of the joint-issue stamp is Scott 1583. Hope that doesn't indicate that the error virus is catching!

Philip Halward, British correspondent for *Stamp Collector*, devoted a major portion of his February 8 column to a discussion of the demand for and pricing of errors. And he presented a recently-discovered error in a Maldives Islands stamp, the 25/ issue of March 22, 1967 honoring the English victory in the soccer world cup. The error stamp is the left-hand member of the pair shown here; the territorial identity and the denomination are missing.

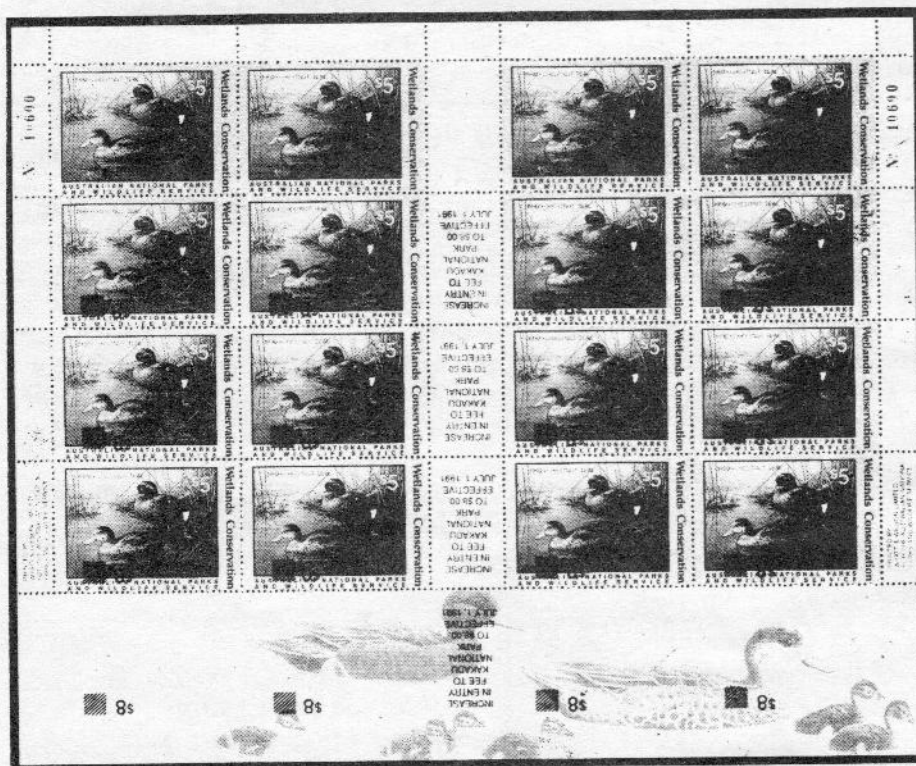
probable cause of the error. "The overprints were produced by a small jobbing printer using letterpress machinery. . . Each time the printer parted the stock to place sheets for overprinting in the feed tray of the printer, he did so at the blank sheet which occurs in the bulk stock at each hundred sheets. The blank sheet masked the next printed sheet, and in this case as the blank sheet was fed through the machine, it was revealed that the feed stock was wrong way round. This was corrected without realizing that one sheet had already passed through the

Continued on the next page

Foreign EFOs Featured In The Philatelic Press-- Continued from the preceding page

press." [Sounds much like the process by which U.S. inverters are created, doesn't it?] The error sheet is shown here.

February 12 of this year; the presale estimate was \$15,000 to \$18,000; actual realizations are not known at this time.



Australian Duck Stamp sheet with inverted overprint

Michael Schreiber, writing in *Linn's Stamp News* for February 17, 1992, has a timely discussion of the errors in France's 1985 St. Valentine commemorative, which pictures a loving couple in an imaginary scene in the countryside. The most important of these errors is the stamp in which the dark-blue denomination (2,10) is absent. Two such errors, one of which is shown here, were offered at Sotheby's (London)



Inking-in roller error causes absence of facial features on top stamp of French St. Valentine pair

French St. Valentine stamp absent its denomination



A second kind of error on the St. Valentine stamp is one that we would classify as a freak caused by a broken inking-in roller. In the pair shown here, the top member has the facial features of the lovers missing. The illustrated pair was advertised in a French stamp magazine late last year for about \$400.



SCHIFF AUCTIONS

Buyers, Auctioneers & Appraisers of U.S. &
Worldwide Stamps & Postal History since 1947.

AUCTION SCHEDULE

May 28, 29, 30
COMPEX & Official
World Columbian
Stamp Expo
Auctions

Auction 220
July 1992
Collectors Club
New York City
Consignments now
being accepted

SELLING STAMPS, COVERS & COLLECTIONS:

We can help you decide the best method of sale for your stamps & covers: Outright, Private Treaty, or by consigning to our Public Auctions. Contact us before sending. Include your address & telephone number(s).

	N.America	Overseas
CATALOGS	Address	Address
1 Year with Prices Realized.....	10.00	18.00
1 Year Catalogs Only	7.50	15.00
1 Catalog with realizations	1.50	2.50
1 Catalog Only	1.00	2.00

Catalogs Free when picked up at our Office.

JACQUES C. SCHIFF JR., INC.

195 Main St., Ridgefield Park, NJ 07660 USA
Telephone: 201-641-5566 from NYC 662-2777

Licensed & Bonded Auctioneers

Official Auctioneer



STAMP EXPO '92
MAY 22-31, 1992 - CHICAGO



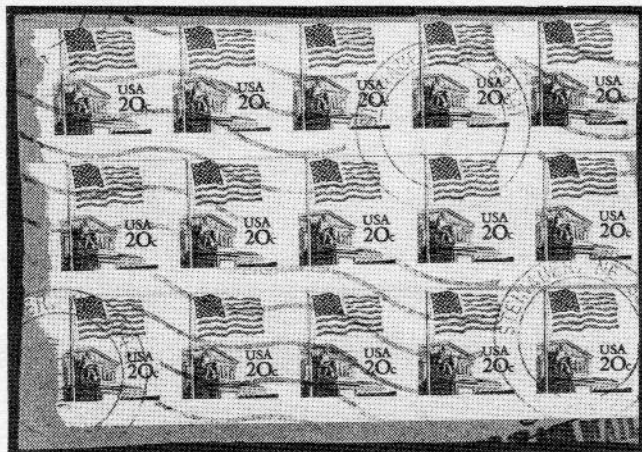
QUALIFIED
AUCTIONEER

Strange Used Flag Coils Keep Showing Up--

20c Flag over the Supreme Court

Plate number coil guru Ken Lawrence, writing in *Linn's Stamp News* for February 17, reported that Nebraska collector Jeff Steinman found the item illustrated below while sorting a common mixture. It is a piece containing three imperforate strips of five of the 1981, Scott 1895a 20c Flag over the Supreme Court coil. Quoting Lawrence, "These stamps obviously were used by someone who did not see special value in stamps that lacked perforations."

"The roller cancel is dated July 13, 1983, from Steinauer, Nebraska. . . Imperforates of the 20c Flag coil are more common than any other major U.S. error." (*Copyright 1992, Linn's Stamp News. Reprinted with permission.*)



22c Flag over the Capitol

Tamarac, Florida dealer Michael Banas trustingly lent your editor the piece shown below. It looks quite normal in the photograph-- just an ordinary 1985, Scott 2115, 22c Flag over the Capitol coil, used on piece with a Skokie, IL Nov. 5, 1987 postmark. But it's not normal; the star field of the flag is printed in black instead of blue. This variety has recently received a Scott number, 2115c. We understand that mint pairs were sold in Jacques C. Schiff, Jr., auctions in May and December 1989 at prices of \$650 and \$675. What do you suppose the used-on-piece item should bring?



Report From Nashville--

Our Nashville correspondent, John P. Campbell, writes, "Our stamp show [Nashville Stamp Show '92, February 22 and 23] went off with a bang. The temp was 71° on Sat. and the crowds came all day long. Then came Sunday. What did it do? RAIN. That didn't keep the people home. They *still* came out to the show in great numbers all day long."

John always includes something special with his report. This time it's a cover franked by a 29c stamp that shows the Mariner 10 spacecraft and the planet Mercury-- and, on this stamp, what appears to be a bright

magenta space creature eyeballing the spacecraft.



UNITED STATES

★ **PROOFS** ★

★ **ESSAYS** ★

★ **MAJOR
ERRORS** ★

**15-Page Proof & Essay List
for \$1.00 in postage. Major
Error Price List for 45¢
in postage.**

WILLIAM S. LANGS

**P.O. Box 46
New Milford, NJ 07646
Phone: (201) 836-0880
Fax: (201) 801-0460**



Bruce H. Mosher for the Booklet Study Group:

Booklet Error/Freak Polygon Oddity Panes (bEFpOps):

The "Final Exam" Results--

My "Dozen Lessons About bEFpOps" in the December 1991 issue of *The EFO Collector* concluded with a decagon and was followed by a "final exam" that was in the nature of a challenge: *Can you show me a bEFpOp with eleven or more legitimate sides?* Three EFOCC members responded to my challenge with extraordinary booklet error/freak polygon oddity panes; this article is devoted to these greatly-appreciated responses.

Third-Place Winner

The third-place response came from Clay Stabler of Ponte Vedra, Florida, who sent photocopies of some of the bEFpOps in his collection. His most complicated is a double-foldover decagon which, though fascinating, missed meeting the challenge by one side. It is a member of the Scott 1213a, slogan 3, family of booklet panes, and is shown in figure 1. This bEFpOp has apparently tired badly from traveling among collectors and dealers, as its lower right appendage has completely separated from the fold (pun intended).



Figure 1: Clay Stabler's Scott 1213a decagon bEFpOp (Third-Place Winner)

Clay's more significant (to me) final exam entry is his corrective observation that the third trapezoid example in lesson 6 of my December article isn't one: it hasn't two parallel sides, and is simply a garden-variety quadrilateral. Thanks, Clay; you were the only one to report this correction.

Second-Place Winner

The second-place final exam blue-book was turned in by Mike Perry of Kelso, Washington. Mike sent photocopies of a nonagon bEFpOp from his collection, figure 2, and the eye-catching, thirteen-sided,

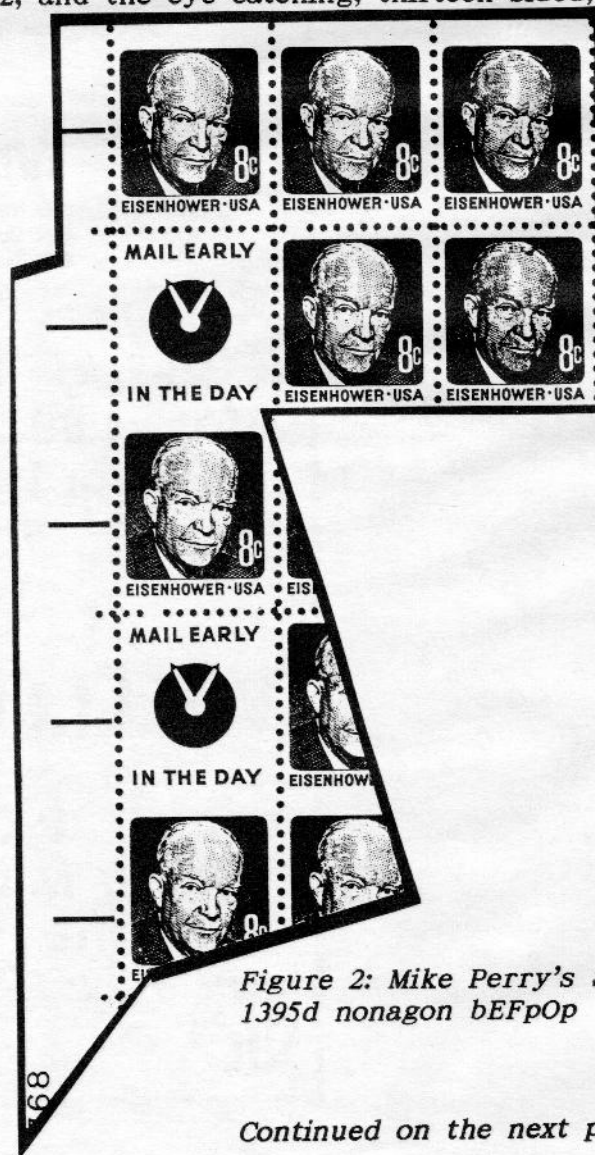


Figure 2: Mike Perry's Scott 1395d nonagon bEFpOp

Continued on the next page

Booklet Error/Freak Polygon Oddity Panes (bEFpOps): The "Final Exam" Results--

Continued from the preceding page

Figure 3: Mike Perry's Scott 1213a thirteenagon bEFpOp (Second-Place Winner)



double-foldover bEFpOp drawn from an auction catalog, figure 3. I'll call this Scott 1213a example a "thirteenagon," because I have no idea what the proper terminology is for such a polygon. Thanks, Mike, for sharing these with us.

Grand-prize winner

The outstanding paper in the bEFpOp final exam came from Larry Sullivan of El Paso, Texas. Larry sent a copy of his fantastic, fourteen-sided, double foldover Scott 1510c pane from his "Philatelic Faux Pas" EFO exhibit of fifteen years ago. This remarkable piece, shown in figure 4, contains portions of 29 Scott 1510 stamps, including, in the middle segment, a beautiful vertical pair imperforate between. Larry tells me that this imperf-between pair triggered Scott to list it as the "1510f" entry in the *Specialized Catalog of United States Stamps*. Congratulations, Larry! You win a copy of my monograph, *Discovering U.S. Rotary Booklet Pane Varieties 1926-1978*.

Larry's "fourteenagon" bEFpOp has never before been illustrated in the philatelic literature, so the remainder of this article will be devoted to its origin and characteristics.

Acquisition of the Prize-Winning bEFpOp

Larry says, "Over the years I became acquainted with a USPS philatelic clerk in

a neighboring town. He knew that one of my major interests was EFOs, since I often showed my exhibit called 'Philatelic Faux Pas'. Every time he received new stock, he checked for EFOs and brought me several minor perf-shifts and color misregistrations.

"On one occasion, he called me at my office and stated that he wanted to drop by my house that evening to show me a new find. I lukewarmly agreed, expecting still more minor items. When he arrived, he handed me a complete and unopened booklet, and suggested I peek through the side opening of the cover. I was astonished to see several folds of paper inside, but I couldn't really tell exactly what it looked like except that it was folded over, miscut, and stapled in place.

"To make a long story short ('Too late, they cried!') we negotiated a price of \$50, I paid him, and he left. He was not yet out of the driveway before the cover was off and the staples were removed, and there was the monster 'fourteenagon'; the other four panes were disgustingly normal."

Continued on the next page

Booklet Error/Freak Polygon Oddity Panes (bEFpOps): The "Final Exam" Results-- *Continued from the preceding page*

Larry goes on to say, "During one period in late 1980 [John Hotchner] was doing a series [for *Linn's*] on EFO exhibits, and as a contest he asked readers to send him photocopies of exhibits they had shown. I sent him a copy of my 'Philatelic *Faux Pas*', and won first prize, a copy of the Dr. Stanley B. Segal book on EFOs."

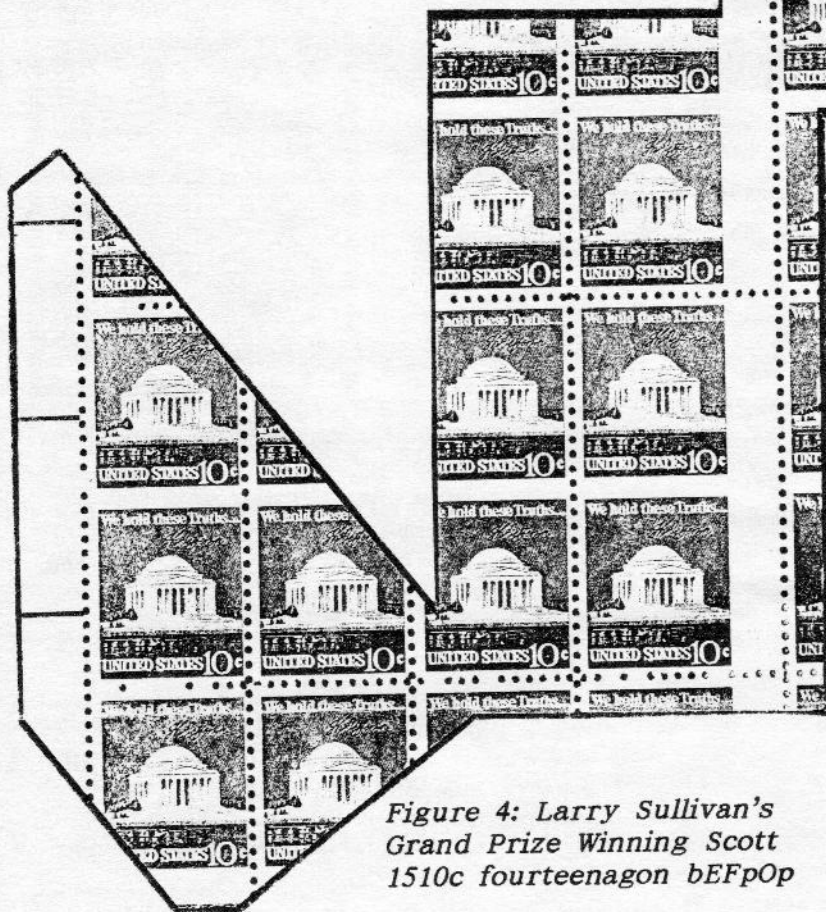


Figure 4: Larry Sullivan's
Grand Prize Winning Scott
1510c fourteenagon bEFpOp

Background: 400-Subject Book-Stamp Layout

The Scott 1510c 10c Jefferson Memorial 8-stamp booklet panes were printed from 400-subject book-stamp plates on Bureau of Engraving and Printing web-fed presses. The printed web was sheeted for booklet assembly by cutting into 400-subject sheets of the general configuration illustrated in figure 5. The sheeting cuts occurred along the horizontal plate joint lines that exist across the very top and bottom of the figure 5 illustration.



Each 400-subject sheet contains 50 8-stamp booklet panes when eventually cut along the thin horizontal and vertical lines shown in figure 5. Many of the booklet panes printed from these plates are platable, so the fifty positions are numbered as shown in the circles. The numbering convention was established by Dr. William Bush of the Bureau Issues Association in the mid-1970s and has become the numbering standard used by collectors and dealers.

Technically, there are in figure 5 a few inaccuracies in the locations of the EE bars, EE dashes, and process marks, and in the size of plate number representations. But the drawing is totally adequate for the following discussion of the generation of Larry Sullivan's prizewinning piece.

Continued on the next page

Booklet Error/Freak Polygon Oddity Panes (bEFpOps):
The "Final Exam" Results--
Continued from the preceding page

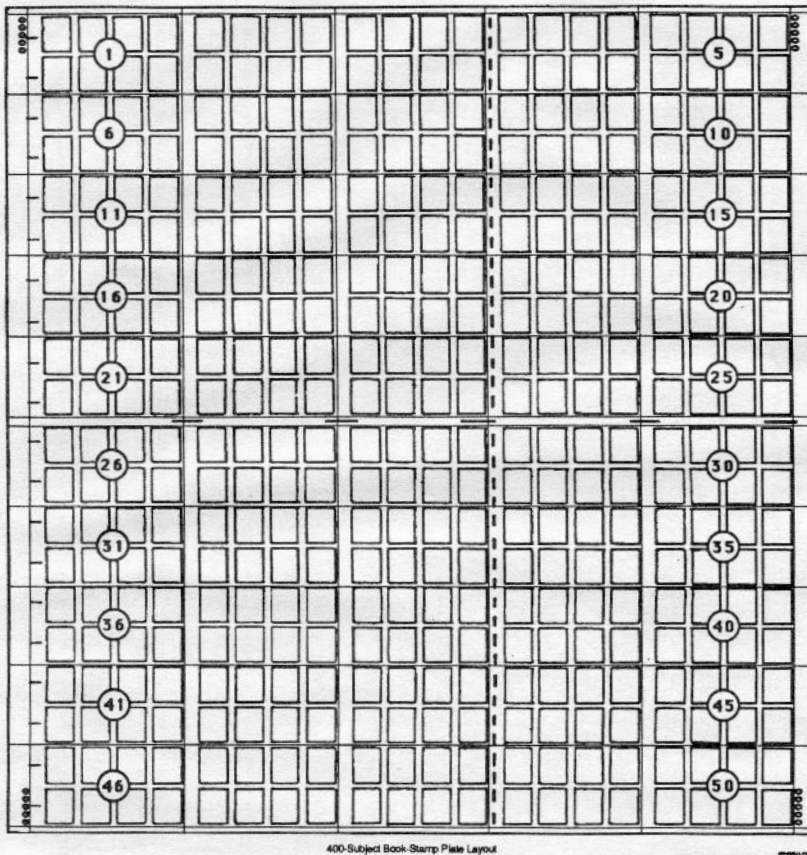


Figure 5: 400-subject
book-stamp plate layout

folds in Larry's fourteenagon and its location on the sheet. The first fold was at almost a 45 degree angle upwards from the paper; the second, steeper fold was in the opposite direction, under the paper.

Interesting Characteristics of the Fourteenagon

1) The position 37 booklet pane survived intact. Only a small foldover exists in the lower left corner of the tab where it is attached to the second segment. Normally, the characteristics of a separate position 37 pane are not sufficiently definitive to establish its plate position more precisely than as one of ten positions in the second column of the sheet; only when it is found attached in a telltale foldover, as in the fourteenagon, can it be accurately plated.

2) Curiously, the two sheet folds appear to meet just below the lowest EE bar at the left-hand edge of the position 26 pane, as shown in figure 6. Trial locations of the two folds that did not intersect at that point failed to produce the illustrated fourteenagon.

3) Before this particular 1510c sheet was being stacked and collated for booklet assembly, the left-hand marginal strip was certainly trimmed away at the cut line shown in figure 6, so that the lower-left sheet plate number could not possibly appear regardless of the locations of subsequent folds and cuts. This left-side trim was a revelation to me: earlier 400-subject book-stamp sheets (e.g., Scott 1284b, 1393a, 1395a, 1395d) were not trimmed or not trimmed closely, as evidenced by the appearance of plate numbers on other foldover examples (see figure 2).

Fourteenagon bEFpOp Generation

The unfolded fourteenagon EFO contains two characteristics that make it possible to readily locate it within the 400-subject plate layout of figure 5:

- 1) The horizontal EE bars at the left side of the left-hand segment place this portion along the left edge of the 400-subject sheet;
- 2) The bottom straight-edge on the left-hand segment exhibits traces of the bottom joint line. This uniquely defines its position to just below position 45.

Using these two clues, we can place Larry's fourteenagon at the shaded location shown in figure 6.

The sheet folds shown by the dotted lines in figure 6 can be deduced from the two

Continued on the next page

Booklet Error/Freak Polygon Oddity Panes (bEFpOps):
 The "Final Exam" Results--
Continued from the preceding page

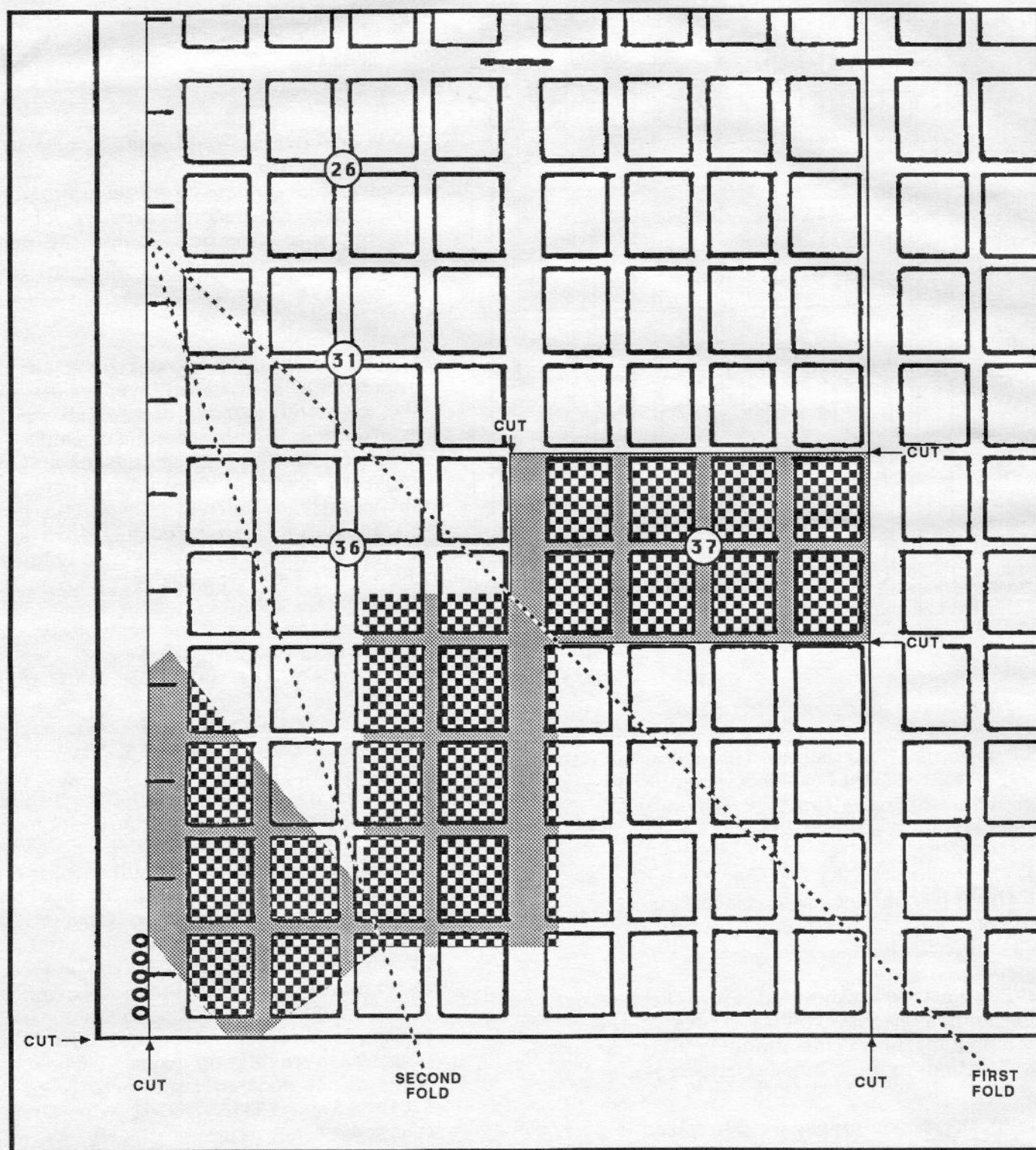


Figure 6: Plating heritage of Sullivan's fourteenagon bEFpOp

Continued on the next page

Booklet Error/Freak Polygon Oddity Panes (bEFpOps): The "Final Exam" Results-- *Continued from the preceding page*

4) My reconstruction efforts showed that the placement and angles of the two folds are extremely critical to recreating Larry's fourteenagon. A slight movement of the folds causes a differently-shaped piece to result. In fact, if the first fold were just a little farther to the left, the bridge between the position 37 pane at right and the second segment to its left would not exist at all, and Larry's spectacular EFO would not have been created.

5) In this configuration the two booklet staples produced nine holes in the piece: four at the left side of the upper right rectangle (the position 37 pane); four across the top of the vertical rectangle; and one at the extreme edge of the selvage on the lower left segment. The top prong

thus pierced all three segments.

In Conclusion

If you would like to understand more about how Larry's fourteenagon was generated, photocopy figure 6, get out your scissors, and prepare to act like a BEP guillotine cutter after folding the sheet. But before folding, use a straight-edge and knife to lightly score the fold lines to insure crisp folds. (Don't cut through the paper!) Then fold the sheet in directions opposite to those described for the real EFO, in order that the cut lines surrounding the position 37 pane will be clearly visible. Cut along those lines. After cutting, reverse the folds, and you'll have a your very own fourteenagon as it appeared in Larry Sullivan's booklet.

EFO Post--

WANTED: Any EFOs for Scott 1548, Sleepy Hollow; 1940, Christmas Teddy Bear; 2168, Margaret Mitchell; 2446, Gone With The Wind. Send description and price to Gary Denis, P.O. Box 11447, Norfolk, VA 23517.

SKYLAB, Scott 1529, pre-print paperfold to TRADE ONLY for other U.S. pre-print paperfolds. Describe (don't send) yours to Earl McAfee, Box 3266, Champaign, IL 61826.

FOR SALE: Complete run of *The EFO Collector* from #1 to date. Make Offer. Scott A. Shaulis, Arbutus Village #D5, Elgin Dr., Johnstown, PA 15904.

HAND-COLORED EFO FDCs: Whenever possible, I produce beautiful FDCs of U.S. new issue EFOs in very limited editions. These sell out quickly, but I'm seeking customers for future issues. For information, send SASE to: ANAGRAM, 6301 Poindexter, Rockville, MD 20852.

Interested in buying horizontally misperfed 37c Millikan stamps (U.S. Scott 1866). If not for sale, photocopies would be appreciated; doing research work. Thomas Smith, EFOCC 454, P.O. Box 23149, Phoenix, AZ 85063.

NEED ODD or curious 651, 703, C11, C23, CE1, CE2, 771, 832, 833, and 834. Write first. Larger pieces of other EFOs. Advise your needs. James Dysarczyk, Apt. B270, 28601 Imperial Drive, Warren, MI 48093.

WANTED: Honeybee EFOs. Imperfs, misperfs, bee out of frame line, bee low, or taking off. I can use them with or without plate numbers, mint or used. Bobby Reece, Jr., P.O. Box 511520, St. Louis, MO 63129.

FOR SALE: Scott 1734 misperf pair, \$7; 1529 color shift, \$6; 1690 color shift, \$7; 1856 misperf-between, \$7; 2276 color shift, \$7. All MNH. John Casey, P.O. Box 673, Rhinebeck, NY 12572.

Have several U.S. 19c Fawn mint blocks of four with one blind vertical perf. Will trade for other mint U.S. EFOs of comparable value. Mark Shofron, 3920 E. San Simeon Drive, Tucson, AZ 85718.

"Discovering U.S. Rotary Booklet Pane Varieties 1926-1978," 128-page book by Bruce Mosher, is loaded with EFO booklet pane information and illustrations. \$8.95 postpaid. Mosher, P.O. Box 033236, Indialantic, FL 32903.

FOR SALE: 1394 misperf, \$6.60; 1529 color shift, \$6.00; 1690 color shift, \$7.00; 1856 imperf-between, \$8.50; 2276 color shift, \$6.60. John Casey, P.O. Box 637, Rhinebeck, NY 12572-0637.

WANTED: Unusual worldwide perforation varieties: 1934 U.S. and G.B. Christmas seals on or off cover; and USPS markings, "body bags," printed letters, etc., explaining delays in the mail. Will buy or advise your needs. John M. Hotchner, P.O. Box 1125, Falls Church, VA 22041.

John Hotchner Wins 1991 Robert E. Manning Award--

The outstanding article of Volume XIII of *The EFO Collector* (August 1990 to June 1991) has been selected by the Manning Award Selection Committee. It is "There Will Always Be Errors. . . Thank Goodness!," written by John M. Hotchner and published in the August 1990 issue.

Mr. Hotchner, a founder of the EFO Collectors' Club, has thus become the seventh winner of the Robert E. Manning award. The award carries with it one year's free EFOCC dues which, unfortunately, will be of little use to Mr. Hotchner, who is already a life member. He will, however, become a member of the award selection committee for 1992.

The previous six winners of the Robert E. Manning award were

1985, Earl McAfee
1986, Howard Gates

1987, Francis Pogue
1988, Clyde Jennings
1989, Bruce Mosher and George Godin
1990, Michael O. Perry.

As the 1992 award committee comprises the three previous winners, its members will be Bruce Mosher and George Godin, co-chairmen; Michael O. Perry; and Hotchner.

Traditionally, any author whose original work is first published in *The EFO Collector* qualifies to be considered for the Manning Award, except for elected officers of the EFOCC and members of the award selection committee. Therefore, if you have in mind a potential article, you would be well-advised to submit it to the editor, Howard Gates, 135 Hacienda Drive, Merritt Island, Florida. It will be welcomed.

Secretary's Report--

Welcome to New Members:

872- Jerry B. Grove, 5 DSCS, PSC 279, Box 152, APO AP 96552; *Imperf coils, missing colors.*

873- Marvin Simon, 14500 Stirling Way, PH 5, Delray Beach, FL 33446.

874- James K. Avery, 2475 Placid Way, Ann Arbor, MI 48105.

875- Tom Grenier, 1315 Olive Ave. #3, Huntington Beach, CA 92648.

876- Zareh Hovanesian, 29 Westcott St., Old Tappan, NJ 07675.

877- Francis T. Mahan, 5222 4th Street, N. #724, St. Petersburg, FL 33703.

878- Walter M. Keepers, Jr., 6341 Glenloch St., Philadelphia, PA 19135.

879- Hank Thode, 3192 N. Cleveland Ave., Arden Hills, MN 55112; *\$1 Rush Lamp and Candle Holder.*

880- Richard Wilson, 1709 Fourth Ave., St. Joseph, MO 64505.

Auction 58 Prices Realized

LOT	BID	LOT	BID	LOT	BID	LOT	BID
1	11	4	5	5	12.50	6	9
8	15	10	9.50	16	8	17	15
18	10	23	3	25	25	27	7.50
29	20	31	22	32	22	33	13
35	8	36	25	37	5.50	38	12.50
39	60	40	7	41	14	42	25
43	16	44	56.50	46	6.50	48	4
49	5	50	8	51	10	52	13
53	22	55	4.50	56	33	59	7.50
72	24	76	6.50	77	7.50	78	4
79	5	80	10	81	12.50	82	5
83	15	84	6.50	85	5	86	5.50
87	12.50	90	14	91	15	93	4
94	24	95	7.50	97	15	98	20
99	6	101	22	104	20	108	16.50
119	2.50	121	7.50	124	27.50	125	14
126	3	129	20	132	10	133	12.50
134	26	135	20	137	11	141	6
143	20	145	25	146	7.50	151	10
152	12	153	5	154	27	155	16
156	12.50	159	10	161	12.50	163	26
164	20	165	25	166	14	167	27
169	10	171	31	173	18	174	15
175	10	176	13	177	15	178	7.50
179	5	180	10	181	12	182	5
184	3	185	5	189	5	190	22
193	10	194	16	196	10	198	58.50
199	17	200	7.50	201	15	204	7.50
205	12	206	26	207	15	211	2
212	2.50	215	20	221	25	223	5

To members consigning material for upcoming EFO auctions:

I would like to provide a cutoff date for accepting consignments for placement in particular auctions. Please refer to the following dates while preparing your material for inclusion:

Auction #	Journal Issue	Consignment Deadline
61	June 1992	5 - 01 - 92
62	August 1992	7 - 03 - 92
63	October 1992	9 - 04 - 92
64	December 1992	10 - 30 - 92

For recruiting efforts, a big "ATTABOY" to John Hotchner, the USPO, and Howard Gates.

--Jim McDevitt

Letter From Romania--

We are grateful to Dr. John Ordway of Bangor, ME for the following translation from the French.

29 II 1992

Monsieur Gates,

I am writing you in French because I can express myself better than in English.

My name is Munteanu Liviu, and I am a member of your club, *The EFO Collector*, with the number 832.

I want to extend the validity of my subscription for the year 1992 and I want also to publish the following [enclosed] advertisement but in three different issues.

Allow me to draw to your attention that I have no dollars and, if you agree, I can pay by a valuable error, a pair imperforate between, [Scott] Romania nr. 578, [illustration nr.] A200, [35 lei brown of 1945]. I am sure that you will be satisfied that the value of the stamp [pair] will cover the necessary sum. If no member of your club wants to buy the piece I'd like to ask if you would kindly



send it back in the enclosed envelope. Allow me to express my great appreciation for your kindness, and my best wishes to you.

--ML

C.P. 45-45

70750 Bucuresti-OF.45

Romania

The cost of a year's overseas membership is \$25, and of three one-quarter-page ads is \$27. Is there anyone out there who would like to spring for all or part of the necessary \$52 in exchange for the illustrated error pair? Tell me.

--Howard Gates

Election Ballot--

The Nominating Committee has selected candidates for the offices of Vice-President, Secretary, and Treasurer; and has reviewed and accepted the Executive Board's nominees for Members-at-Large of the Executive Board. It has not yet found a candidate for President.

Biographies of officer candidates are as follows:

For Vice-President

WALT COLE has worked for Caltrans, the State of California's transportation activity, for 32 years, and holds a civil engineering classification. He studied civil engineering at Humboldt State College and at Ventura. His philatelic specialization started with the 1c 1861, with which he established a traditional collection, including essays, proofs and covers. He currently specializes in the 3c Presidential of 1938, and has evolved prize-winning

exhibits of that stamp. He lives in French Gulch, CA, a former mining town 30 minutes west of Redding.

For secretary

JIM McDEVITT has served three terms as EFOCC Secretary. He started stamp collecting at the age of ten, and was introduced to EFOs in 1966. He maintains a sheet of information on each Scott-listed error, a card file on each other variety, and a file of EFO clippings from the philatelic press and auction catalogs. He retired from the Coast Guard after 28 years' service, and for 12 years has been secretary of the Chief Warrant Officers' Association, USCG (New England District). He currently lives in Norwood, MA, and works as a fire dispatcher.

For Treasurer

DONALD REINKE has served three years as EFOCC Treasurer. He is an attorney by profession and a partner in the legal firm of Zimmerman, Pezzola and Reinke, P.C. He is married, has two children, and lives in Moraga, CA.

Your ballot is on the following page.
Please clip, mark and mail it without delay.

The New World Discovers Columbus--

This year, 1992, marks the 500th anniversary of Columbus's discovery of America. To note it, things are cooking all over the philatelic scene.

An avalanche of new issues has already been announced by the USPS. A 29c stamp reproducing a portion of the 15c 1869 "Landing of Columbus" was released January 24 to promote World Columbian Stamp Expo, to be held in Chicago May 22-31, 1992. Six postally-valid souvenir sheets that reproduce the entire set of sixteen 1892 Columbian commemoratives will be sold as a set costing \$16.34. Release is scheduled for World Columbian Stamp Expo. A se-tenant block of four 29c stamps depicting Columbus's first voyage will be released this month.

Not just the New World, but postal administrations everywhere including, of course, Spain and Italy, will take advantage of the occasion to commemorate it with new issues.

Numerous national societies, including the APS, will be convening at World Columbian Stamp Expo. Several thousand frames of material will be displayed competitively, and there will be "fun" exhibits and a Court of Honor.

Later, in October, from the 9th through the 12th, the APS accredited show held annually in Columbus, OH (COLOPEX) will also celebrate the event.

--Clyde Jennings



BALLOT FOR THE ELECTION OF EFOCC OFFICERS AND EXECUTIVE BOARD MEMBERS FOR 1992-1994.

Please mark and return your ballot, postmarked before May 1, 1992 to Louis E. Repeta, P.O. Box 16058, Charleston, SC 29412.

Vice-President: WALT COLE _____ or write in _____

Secretary: JIM McDEVITT _____ or write in _____

Treasurer: DONALD REINKE _____ or write in _____

Board member at large

(vote for two): TIM LINDEMUTH _____; JOE LICATA _____; MICHAEL PERRY _____.

In accordance with the EFOCC constitution, Article VIIIC, election of officers will be by majority of votes cast. Write-in candidates will be considered to have the full agreement of the nominating committee.

BEST SELLING BOOKS

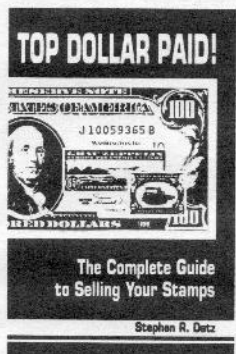


U.S. Errors - 1992 Edition is the most comprehensive catalogue of U.S. major errors stamps ever published. It has become *the* standard reference for U.S. major errors. It lists, illustrates, and prices every U.S. imperforate (including all known imperf PNC strips), color omitted error, and invert.

U.S. Errors is loaded with footnotes (such as which errors usually are encountered in poor condition) and cautions about which errors are faked (and there *are* dangerous fakes out there!). Quantities known for each issue are noted. A dealer directory lists the most active dealers in the U.S. error market.

Whether you're buying or selling, or just want to be aware of what's out there in case you come across something unusual, *U.S. Errors - 1992* is a must!

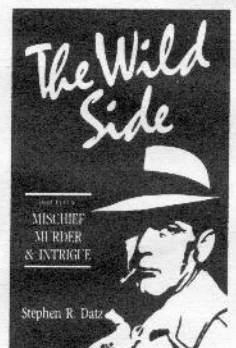
U.S. Errors - 1992 \$12.95 *Autographed, Hardbound, Limited Edition* \$30.00



Top Dollar Paid! has become one of the best selling books in philately. It's really two books in one: a concise guide to what works best in selling, and an entertaining behind-the-scenes journey into the real-life world of stamp dealing. It's been critically acclaimed as the best book ever written on the subject.

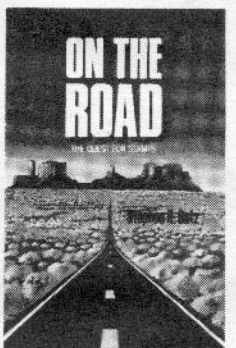
Even if you're not in the market to sell right now, perhaps the greatest service *Top Dollar Paid!* performs is to make you aware of the financial consequences of purchases you're making today. *All stamps are not created equal!* *Top Dollar Paid!* could be worth hundreds or even thousands of dollars to you.

Top Dollar Paid! \$9.95 *Autographed, Hardbound, Limited Edition* \$30.00



The Wild Side, the second in Datz's trilogy about the stamp business, is a journey into the side of stamp dealing you never hear about. In stories drawn from Datz's own first hand experiences you'll meet rip-off artists, credit card scammers, master's of the big con (yes, big cons are alive and well), murderers, shadowy travelling men who sell stamps too good to be true (regummed, reperfed, etc.) You'll meet a variety of con men, rascals, scoundrels, eccentrics and characters, and delightfully entertained by incredible true adventures from a side of philately you never imagined: *The Wild Side!* Once you start reading, you won't be able to put it down!

The Wild Side \$9.95 *Autographed, Hardbound, Limited Edition* \$30.00



On The Road, the third in Datz's trilogy, is for every soul who's ever dreamed of running away to join the circus or imagined stamp dealing to be a travel poster existence of jetting away to distant cities, handling rare stamps every day, dining out every night, leading a life of adventure!

What an odyssey. Missed planes, broken-down cars, third-rate hotels, blizzards, thieves, wild goose chases, slow shows, enigmatic millionaires, the tantalizing promise of inverts at the truckstop in Last Chance, Arizona, and even tornados.

On The Road takes you from the bright lights of the big cities to the desolate hinterlands of Wyoming, Arizona, and New Mexico. Along the way, you'll be charmed and entertained by some of the most unconventional, unpredictable, and outrageous true-life characters in philately.

On The Road \$9.95 *Autographed, Hardbound, Limited Edition* \$30.00

Add \$1.75 shipping per order.

Published by and available from

GENERAL PHILATELIC CORPORATION

P.O. BOX 402 LOVELAND, CO 80539

Auction #60-- Closing Date, May 31, 1992

5% Buyers' Premium

UNITED STATES

A. Color Shift EFO's:

Lot	Scott	Pg	Description	Min Bid
1	620	A	OG w/vignette shifted LL into frame.	10.00
2	702	A	NH/OG four singles w/diff loca of cross.	12.00
3	703	A	OG w/vignette shifted to UL	7.50
4	834	A	NG w/vignette shifted up.	35.00
5	1042	A	MNH Marg blk of 4 w/vignette shift rt.	6.50
6	1311	C	MNH SS w/green & blue shifted left.	Open
			Includes normal copy. DONATION LOT.	
7	1316	A	OG Ptt blk w/pink shifted left.	5.00
8	1455	C	MNH Blk of 4 w/8mm intaglio black shift.	10.00
9	1461	C	OG w/yellow figure shifted 1.5mm high.	15.00
10	1468	A	NH/OG Zip blk of 4 - Two tail variety.	8.00
11	1470	B	NH/OG w/color shift.	5.00
12	1483a	A	MNH Blk of 4 w/intaglio black shifted up 1mm.	7.50
13	1483a	NP	MNH Zip blk of 4 - refer to lot #12.	12.50
14	1541a	B	OG w/intaglio colors shifted up 2mm.	15.00
15	1542	B	MNH w/color shift left. Includes normal.	5.00
16	1556	A	MNH Pair w/engraving shifted dn 1.5mm.	7.50
17	1557	A	MNH w/engraved black shifted rt 1+mm.	4.00
18	1565/68	C	MNH Blk of 4 w/color misregistration.	12.50
19	1577/78	A	MNH w/litho shifted down 1mm.	7.50
20	1632	A	MNH w/major color misregistration and misperf.	15.00
21	1690	A	MNH Single w/color shift.	5.00
22	1725	A	OG w/black intaglio shifted down 7mm and w/slight horiz misperf.	10.00
23	1725	A	MNH Pair w/color shift - design change.	18.00
24	1759	B	MNH Blk of 4 w/litho colors shifted up.	10.00
25	1798b	C	MNH Ptt blk/12 w/blue & red misregister.	17.50
26	1934	B	OG Vert pair w/intaglio shift down 7mm.	20.00
27	1936	A	MNH Single w/color shift.	5.00
28	2014	A	MNH w/engraved black shifted up & left 2mm.	6.00
29	2281	A	MNH w/black shifted left 1mm.	6.00
30	2281	A	MNH Pair w/bee shifted right.	6.00
31	2367	A	MNH Single w/color shift.	5.00
32	2399a	A	MNH Single w/gold color missing.	18.00
33	2412	B	MNH Single w/color shift.	7.00
34	2419	B	MNH Single w/black shifted rt. Ptt #1.	5.00
35	C81	C	MNH Blk of 4 w/jet shifted up.	15.00
36	C81	A	MNH Single w/engraving shifted up 2mm. Includes normal copy.	6.00
37	C98	C	MNH Zip pair w/colors shifted left.	25.00
38	CE2	A	OG w/vignette shifted up to frame.	7.50
39	J96	B	MNH Blk of 4 w/black shifted UL.	10.00
40	J92/3/6	A	2MNH&1H Singles w/black shifted.	8.00

B. Perf Shift EFO's:

Lot	Scott	Pg	Description	Min Bid
41	24	A	Used single w/doubled perfs to right.	20.00
42	24	A	Used single w/wide perfs at left.	20.00
43	68	A	Used single misperfed 4mm to left.	40.00
44	73	A	Used single w/vert perfs misperfed 3.5mm to left.	20.00
45	87	A	Used 10x13 Grill top margin single misperfed on slight diagonal.	50.00
46	94	A	Used 9x13 Grill single misperfed with "engraved by" at bottom.	7.50
47	178	A	Used w/wide perfs and "Continental Bank Note Co." at bottom.	6.00
48	182	A	Used w/wide top/right margin.	5.00
49	230	A	Used w/wide perfs at right/bottom.	7.50
50	250	A	Used Bottom margin single w/extra row of perfs 13mm into stamp.	10.00
51	301	A	Repaired single w/second row of perfs.	5.00
52	319	A	Used w/perfs shifted 10% to left.	Open
53	324	A	OG Arrow single w/extra row of perfs 24mm into stamp.	15.00
54	331	A	OG/HH Strip of 3 w/vert misperfs.	16.00
55	504	C	Used Precancel w/horiz misperf.	10.00
56	540a	C	Coil waste blk of 4 horizontally misperfed. Small tear in upper margin.	40.00
57	549	A	Used single w/wide margins at top/sides.	5.00
58	678	A	Used single misperf showing plate #.	5.00
59	687	C	MNH Ptt blk of 4 misperfed thru ptt #.	8.00
60	720	A	Used single with misperf.	5.00
61	804	A	MNH Single w/vert & horiz misperfs.	5.00

62	805	A	OG Pair with one perf hole.	6.00
63	805/6	C	OG Precancel blks of 4 misperfed left.	12.00
64	806	A	MNH Single w/two way misperf.	9.00
65	807	A	OG/LH Single misperfed - design change.	5.00
66	899a	A	OG Imperf between pair.	20.00
67	900	A	MNH Pair with blind perfs.	5.00
68	901a	A	OG Imperf between pair.	20.00
69	1018	C	OG UL Margin blk of 4 w/horiz perfs shifted up 3.5mm.	15.00
70	1021	A	MNH Single with misperf.	12.00
71	1035	C	OG Top margin blk of 4 with horiz perfs shifted up 5.5mm.	12.00
72	1035	C	OG Blk of 4 w/vert perfs shifted rt 5mm.	8.00
73	1046	A	OG Rt margin pair w/vert perfs shifted right 4mm.	7.50
74	1060	A	MNH Single misperfed single.	9.00
75	1062	C	OG Rt margin blk of 4 w/vert perfs shifted right by 4mm.	10.00
76	1117	A	MNH Misperfed single.	8.00
77	1128	A	MNH Misperfed single.	12.00
78	1158	B	MNH Misperfed single.	9.00
79	1205	B	MNH Lt margin blk of 4 w/vert perfs shifted 5mm to right.	15.00
80	1280	A	MNH Single w/two-way misperf.	15.00
81	1280	B	MNH Lt margin pair w/vert perfs shifted left by 3mm.	8.00
82	1280	B	MNH Misperfed blk of 4.	9.00
83	1293	A	OG w/horiz perfs shifted down 5mm.	7.50
84	1297	B	OG Imperf pair.	18.00
85	1305e	B	MNH Imperf pair.	5.00
86	1312	B	OG Bottom margin blk of 4 w/horiz perfs shifted down 4mm.	10.00
87	1326	B	MNH Blk of 4 w/vert perfs shifted to right 3.5mm.	10.00
88	1327	B	MNH Single w/two-way misperf.	16.00
89	1329	C	OG Blk of 4 w/horiz perfs shifted up 4.5mm.	10.00
90	1335	B	MNH Misperfed single.	8.00
91	1338	B	OG Blk of 4 w/vert perfs shifted to right 4mm.	10.00
92	1338	B	Same as #91 except 6mm shift.	12.00
93	1338	B	OG Lt margin blk of 4 w/horiz perfs shifted up 6mm.	12.00
94	1338	B	Same as #92 except perfs shifted down.	20.00
95	1338	B	MNH Misperfed single.	8.00
96	1338	B	Same as #94 except is zip blk of 4.	25.00
97	1338a	B	MNH Misperf strip of 3.	6.00
98	1369	C	MNH ME Blk of 6 w/top row of perfs 4mm high.	6.00
99	1393d	B	MNH Misperfed single.	8.00
100	1394	B	MNH Blk of 4 w/horiz perfs shifted up 3.5mm.	12.00
101	1394	B	2 - MNH Misperfed singles.	10.00
102	1402	B	MNH Misperfed line pair.	13.00
103	1424	B	MNH Misperfed single.	6.00
104	1437	B	MNH ME Blk of 4 misperfed.	16.00
105	1472	B	MNH Misperfed single.	9.00
106	1472	B	MNH Misperfed single w/ptt # in stamp.	16.00
107	1488	B	MNH Strip of 5 w/horiz perfs on diag.	17.50
108	1489	B	Used misperf single.	6.00
109	1510	B	MNH Ptt blk of 4 w/vert perfs shifted left 4mm. Ptt # within stamp.	25.00
110	1519a	B	MNH Imperf line pair.	25.00
111	1520b	B	MNH Imperf coil pair.	25.00
112	1549	E	MNH ME blk of 4 w/perfs shifted up 3mm on diag & to left 1mm on diag.	15.00
113	1549	E	MNH Zip blk of 4 w/two-way perf shift (5mm x 4mm).	30.00
114	1560	B	MNH Misperfed single.	10.00
115	1560	D	MNH Misperfed single.	9.00
116	1563	D	MNH Misperfed single.	5.00
117	1564	D	MNH Misperfed single w/design change.	12.00
118	1584	E	MNH Zip blk of 4 w/horiz perfs shifted by 4mm.	10.00
119	1591	D	MNH Horiz pair w/slight shift of perfs up & 8mm to right.	7.50

120	1591	E	MNH Misperf single.	5.00
121	1592	E	MNH Zip blk of 6 with "use zip code" inside stamp.	36.00
122	1597a	E	MNH Imperf vertical pair.	9.00
123	1610	E	MNH Bottom margin blk of 4 with intaglio shifted up. NOTE: color shift.	32.00
124	1615ce	D	MNH Imperf between gap pair.	18.00
125	1615cf	D	MNH Precancelled imperf pair.	10.00
126	1616	D	MNH Strip of 4 w/perf shift 7mm to rt.	10.00
127	1618	B	MNH Strip of 3 w/perfs shifted 8mm to right.	6.00
128	1618c	D	MNH Coil pair with only 3 perf holes.	16.00
129	1716	B	MNH Misperf single w/design change.	16.00
130	1734	D	MNH Misperf strip of 2.5 stamps.	8.00
131	1732/33	B	MNH Single w/vert perfs shifted 5mm to right.	20.00
132	1735	E	MNH ME Blk of 6 w/inscription inside stamp.	20.00
133	1743	D	MNH Line strip of 7 - perfs shifted 10mm to right.	20.00
134	1758	D	MNH Misperf single.	8.00
135	1767a	E	MNH w/vert perfs shifted 3mm left.	10.00
136	1772	D	MNH w/horiz perfs shifted 7.5mm down.	8.00
137	1778a	F	MNH Misperf gutter blk of 4.	45.00
138	1818	E	MNH ME Blk of 4 w/horiz perfs shifted up 4mm.	10.00
139	1818	D	MNH Misperf single.	12.00
140	1833	D	MNH Misperf single.	5.00
141	1845	E	MNH Single w/vert perfs shifted to right. Pft # inside stamp.	15.00
142	1848	E	MNH Single w/vert misperforation.	10.00
143	1848	D	MNH Misperf single.	6.00
144	1857	E	NG Blk of 4; Middle row of perfs takes a jog. Left perfs off 3mm.	10.00
145	1860	D	MNH Rt margin pair w/EE bars in stamp.	13.00
146	1863	F	MNH Bottom margin blk of 4 with horiz perfs shifted 6-7mm.	14.00
147	1863	D	MNH Misperf single.	9.00
148	1874	F	MNH Misperf single w/gutter.	9.00
149	1891a	D	MNH Imperf pair.	15.00
150	1895	D	MNH Misperf coil pair.	5.00
151	1908	D	MNH Misperf pair.	5.00
152	1908	D	MNH Pft # strips of 5 misperf 3mm to left. Pft #'s 7 and 8.	75.00
153	1908	D	MNH Coil strip w/missing perfs.	5.00
154	1934	D	MNH Misperf single.	9.00
155	1935	D	MNH Misperf w/EE bars inside stamp.	10.00
156	1935	D	MNH Misperf single.	8.00
157	1947	D	MNH Misperf coil pair.	5.00
158	1950	D	MNH Misperf w/gutter snipe at top.	8.00
159	2011	D	MNH Misperf single.	6.00
160	2015	D	MNH Misperf single.	10.00
161	2019/21	D	MNH Misperf pair.	10.00
162	2019/22	F	MNH Blk of 4 w/horiz perfs up 7mm.	16.00
163	2019/22	NP	Same as #162 except zip blk of 4.	15.00
164	2023	D	MNH Misperf single.	7.00
165	2036	D	MNH Misperf single.	6.00
166	2038	D	MNH Misperf w/gutter.	9.00
167	2041	D	MNH Misperf single.	5.00
168	2066	F	MNH Blk of 4 w/full gutter. Perfs shifted up into bottom stamps.	25.00
169	2080	D	MNH Misperf single.	7.00
170	2089	D	MNH Misperf single.	7.00
171	2114	D	MNH w/6mm horiz perf shift.	3.00
172	2115	D	MNH Pft strip of 7 misperf 5mm to right. Pft # 10.	25.00
173	2115a	D	MNH Imperf pair.	7.00
174	2136	D	MNH Strip of 5 w/perfs shifted 5mm rt.	9.00
175	2153	D	MNH Misperf single.	9.00
176	2154	D	MNH Misperf single.	9.00
177	2203	D	MNH w/horiz perfs shifted up 11mm.	10.00
178	2255	D	MNH Misperf pair.	6.00
179	2280	D	MNH Imperf coil strip of 6.	16.00
180	2280	D	MNH Misperf coil pair.	7.00
181	2451	D	MNH Coil pair w/6mm perf shift.	5.00
182	2457	D	MNH Coil pair w/8mm perf shift.	6.00
183	2521	G	MNH Single w/4mm perf shift to left.	7.50
184	2523	G	MNH Misperf pair.	6.00
185	C25	G	MNH Misperf single.	5.00
186	C71	F	MNH Misperf single.	10.00
187	C78	G	MNH Misperf single.	5.00
188	C83	G	MNH Misperf pair.	7.00
189	C96a	F	MNH Vert pair w/horiz perfs up 3mm.	10.00
190	J3	G	Used single w/wide perf at top & having company imprint.	10.00
191	J97	F	MNH UR Corner blk w/horiz perfs shifted down 3.5mm.	15.00

192	R15	G	2 Used singles w/doubled perfs vert/hor.	7.50
193	R60	F	Used strip of 3 w/vert perfs doubled.	15.00
194	R96c	F	Used single w/doubled horiz perfs.	10.00
195	R113	F	Used single w/extra rows of vert & diagonal perfs.	22.50
196	R114	F	Used single w/2 extra rows of vert & diagonal perfs.	14.00
197	R116	F	Same as #196.	30.00
198	R137	G	Used single w/two extra rows of perfs on diagonal.	7.50
199	R141	F	Used single w/extra row of perfs on diagonal.	15.00
200	R217	G	Same as #199 ex. nearly bisects stamp.	5.00
200A	20L56	F	OG Boyd's Dispatch strip of 20 - Misperf vertically. DONATION LOT!	Open

C. Miscut Coil EFO's:

				Min Bid
201	842	G	OG Miscut pair.	6.00
202	842	G	MNH Line pair w/partial plate number.	5.00
203	848	G	OG Line strip of 3 w/40% pft# 22180.	7.50
204	1305c	G	MNH Line pair w/10% pft #'s 33983/84.	7.50
205	1304	G	MNH Line pair w/partial pft #'s.	5.00
206	1401	G	MNH Coil pair miscut w/design change.	25.00
207	1615cf	G	MNH Imperf & miscut margin pair.	35.00
208	1617b	G	MNH Imperf pair miscut 2mm high.	36.00
209	1743	G	MNH Coil pair w/plts 35840/35860.	12.50
210	1898ab	G	MNH Line strip of 6 w/pft #4 100% at bottom & small part at top.	7.50
211	1903a	G	2 - MNH Line strips of 10 with 100% pft #'s 5 & 6 at top.	15.00
212	1903a	G	MNH Line strip of 6 w/no pft number. EE marknigs on stamps.	15.00
213	1904a	G	2-MNH Pft strips of 6. Pfts 1 & 2 split.	40.00
214	1904a	G	2-MNH Pft strips of 5. Pfts 3 & 4 split.	500.00
215	1906	G	MNH Line pair w/100% pft #3 at top.	10.00
216	1907	G	MNH Pft strip of 5. Pft #10 split.	10.00
217	1908	H	MNH Strip of 5 misperf 10mm to rt.	15.00
218	2124a	H	MNH Pft strips of 6. Pfts 1 & 2 at top.	7.50
219	2124a	H	MNH Line strip of 7. Miscut to show 5% pft #2 at bottom and no # at top.	10.00
220	2128	H	MNH Pft strip of 5. Pft #1 split.	7.50
221	2128a	H	MNH Line strip of 7. Pft #1 split.	10.00
222	2132	H	MNH Line strips of 5. Pft #'s 1 & 2 100% at top.	10.00
223	2132	H	MNH Line strip of 5. Miscut top row with no plate number.	10.00
224	2134	H	MNH Pft strips of 5. Pft #'s 1 & 2 split.	15.00
225	2281	H	MNH Pft strip of 5. Pft #2 split.	7.50

D. Booklet EFO's:

				Min Bid
226	804b	F	MNH Pane w/50% pft# 22403.	6.00
227	807a	F	MNH Pane w/99% pft# 21996 and misperf left into design.	20.00
228	1036a	F	Unexploded bklt w/panes miscut 2.5 to 3mm right.	9.50
229	1288bc	F	Full bklt w/both panes having 9mm perf shift into left stamp.	35.00
230	1395a	F	MNH Miscut bklt pane of 8.	4.00
231	1395b	F	Full bklt with 50-60% 32910/32911 from UL position.	15.00
232	1595d	F	Full bklt with top pane showing 5% of 37327 & bottom pane 60% of 37343.	20.00
233	1737a	G	Full bklt w/top pane having doubled LRM & green lightly printed.	15.00
234	1949a	G	Full bklt, pft #9. Both panes have vert perf shift 7mm into left stamps.	40.00
235	1949a	I	Same as #234 except pft #10.	35.00
236	1949a	I	Full bklt, pft #10. Both panes have vert perf shift 14mm into right stamps.	40.00
237	2121a	I	Full bklt w/missing "2" or "2" is brown instead of black on both panes.	20.00
238	2566a	I	Full bklt w/purple bkgnd disappearing on top pane.	55.00
239	C51a	G	Booklet cut on slight diagonal.	7.50
240	C78/1280	G	Full bklt w/3 panes miscut showing 98% 33485, 95% 33486 & 40% 32966.	15.00

E. Inking & Tagging EFO's:

				Min Bid
241	805	F	MNH Pft blk of 4 w/smeat in margin.	5.00
242	805	I	MNH Blk of 4 w/bot stamps underinked.	5.00
243	806	I	MNH w/phantom pft #'s - elect eye issue.	10.00
244	806	G	MNH Single - dry print.	5.00
245	807	G	MNH Single - dry print.	5.00

246	829	I	MNH Blk of 4 w/bot stamps smeared and underinked.	9.00	306	UC20/22	M	2 Entires w/sloppy surcharges.	12.50
247	965	I	MNH Blk of 4 w/UL stamp smeared.	5.00	307	UX46	N	Postal card with "slime hole".	5.00
248	1051	I	MNH Blk of 4 w/right stamps overinked.	12.00	308	UX46	N	Postal card w/ink blob over "L".	5.00
249	1057	G	MNH Pair with red smear.	6.00	309	UX46a	N	Used "N God We Trust" variety.	7.50
250	1160	H	MNH Single with ring on medal gold instead of blue. Normal included.	5.00	310	U411c	NP	Albino entire w/stamp on inside fl flap.	5.00
251	1200	I	MNH Blk of 4 w/denomination underinked on left side.	6.00	311	U414	M	Miscut w/stamp low to left on angle.	5.00
252	1200	NP	Same as #251.	7.50	312	U432/481	M	2 - Used entires w/one digit in cancel inverted.	7.50
253	1246	M	Full sht w/blue smudge thru left strip.	20.00	313	U436	NP	Used albino w/#13 window.	7.50
254	1280	H	MNH Blk of 12 w/rejection spray marking down third row.	15.00	314	U436	NP	#23 Albino entire.	5.00
255	1338/1622	H	2- MNH Coils w/heavy multicolor joint lines.	5.00	315	MIX	NP	Mixture of 5 albino entires.	10.00
256	1351	H	MNH Single with blue smear.	5.00	316	MIX	N	4 Examples of misfolded entires.	15.00
257	1608	H	MNH Single w/pink flame - dry print.	7.00	317	PS3800	M	Misprinted red certified mail receipt.	7.00
258	1619a	H	MNH Pair - blue on white paper.	8.00	318	MIX	N	5 covers with moderate EFO's.	15.00
259	1726	H	MNH Blk of 4 with 10+mm of margin stamps not printed.	15.00	319	MIX	N	Mixture of 7 entires with albino, ink problems, etc. Faulty.	5.00
260	1726	H	MNH Strip of 5 with right stamp & plt number not printed.	10.00	320	UC53	N	Reversed die cut.	15.00
261	1744	I	MNH Pkt blk of 12 - yellow plt # and mostly color missing from 4 right stamps. Present to some extent in other 8.	60.00	H. EFO Stamp Mixtures:				
262	2035a	I	MNH w/doubled blue doctor blade streak.	5.00	321	MIX	K	Scott's 1324,1438&1475 color shifts.	6.00
263	2170	H	MNH Horiz strip w/variable light print due to cleaning fluid on plate.	10.00	322	MIX	J	1388 w/smear & 1389 w/red shift.	6.00
264	2280	H	2 - MNH Pairs w/smeared at top & bot.	10.00	323	MIX	K	4 - MNH Misperfed singles.	10.00
265	2336	H	MNH Blk of 4 w/D press smear at top.	12.50	324	MIX	K	5 - Transpo strips of 5 with chill roller doubling.	25.00
266	2578	M	Full sht w/major solvent smear affecting 80% of sheet. Color changes present.	75.00	325	MIX	K	5 - MNH Misperfed singles.	10.00
267	C35	J	MNH Blk of 4 w/underinked rt stamps.	6.00	326	MIX	K	Same as #325 - different stamps.	10.00
268	C72	H	MNH Blk of 4 w/heavy overinking & smears at top.	15.00	327	MIX	K	10 - MNH Misperfed stamps.	25.00
269	C80	H	MNH Vert strip of 5 w/tagging ghost.	12.50	328	MIX	K	6 - MNH Wet print smears.	5.00
270	E23	H	MNH Single w/blue ink in red arrow.	7.00	329	MIX	K	15 - Assorted minor EFO's.	7.50
271	J81	E	MNH Blk of 10 w/dry print bot to top.	15.00	330	MIX	K	88 - Used partial plate #'s on stamps.	20.00
272	J89	J	MNH w/faded value at right.	7.50	331	MIX	K	10 - MNH Mix of moderate EFO's.	16.00
273	O139	J	MNH PNC Strip of 3 w/red lettering from bot affecting black above. Pkt #1.	30.00	332	MIX	K	15 - Used EFO's.	10.00
F. Plate Varieties/Misc. EFO's:					333	MIX	K	5 - Different misregistrations on #1096.	5.00
274	375	J	OG/HR Major diagonal crease opened after perfed affecting 3 stamps.	60.00	334	MIX	K	10 - Diff. MNH 3-cent gutter snipes.	6.00
275	499	J	OG - 2 Blks of 4 w/UL corner folds affecting perfs.	20.00	335	MIX	K	9 - Diff. used gutter snipes on definitives.	5.00
276	300/709	J	Used pairs with inverted precancels.	5.00	I. Foreign EFO's:				
277	637	J	OG/LH Albino with Dallas precancel.	5.00	336	422	K	Argentina: OG Extra comb perf strike 8.5mm into margin/left stamps.	20.00
278	653	J	2 - OG Pkt blks of 15 w/damaged plate & retouch. Visible around mouth.	5.00	337	427	K	Argentina: OG Blk of 6 w/horiz perfs shifted down 3.5mm.	15.00
279	657	J	OG/LH Blk of 4 w/dark shade - fake?	60.00	338	58	K	Brazil: Used with two-way misperf.	5.00
280	720	J	MNH Single with double paper.	8.00	339	J5	K	Cilicia: LH Double Cilicia overprint.	3.00
281	720	J	OG Top margin blk of 6 w/5 - 6mm of adjoining pane.	20.00	340	I2	K	Colombia/Antigua: Foldover with crazy perfs.	7.50
282	721	J	Used "small pox" coil - literature included. ** DONATION LOT **	5.00	341	31	K	Colombia/Bolivar: Vert misperf 6.5mm to right. Cut to shape.	7.50
283	726	J	OG Bottom margin plt blk of 20 w/o plt #. Scott listed. Repaired perfs.	25.00	342	209	L	Dominican Republic: OG Blk of 4 with imperf left margin.	10.00
284	737	J	MNH Single with "tear drop".	5.00	343	CB24	L	French Morocco: MNH Blk of 3 with underinked overprint.	Open
285	785	J	MNH Pair with full gutter.	5.00	344	43/54	K	French Morocco: Wide perfed singles.	5.00
286	881	J	MNH Single with offset.	7.00	345	651	L	Germany: OG Vert pair - horiz imperf between and at top.	20.00
287	1280	J	MNH Blk of 4 w/full gutter.	9.00	346	???	L	Ghana: OG w/green missing.	15.00
288	1392	J	MNH Single with intaglio offset.	6.00	347	8	K	Great Britain: Used horiz pair with perfs shifted down 4mm.	15.00
289	1428	J	MNH Single w/black intaglio offset.	15.00	348	187	K	Mexico: Used with vert perf shift.	Open
290	1468	E	MNH Zip blk of 12 - broken circle var.	7.50	349	504	L	Mexico: OG Bottom margin blk of 4 vertically rouletted & imperf horiz.	25.00
291	1610	J	MNH Single with offset.	14.00	350	226	L	Peru: Vert margin pair - imperf horiz.	10.00
292	C84	J	MNH Blk of 4 w/full gutter.	5.00	351	B7	L	Poland: OG Top margin blk with two rows of horiz perfs between stamps.	12.00
293	C23	J	OG Blk of 4 with corner fold.	10.00	352	O2	K	Poland: NG with preprinted paperfold.	3.00
294	C119	E	MNH LL Corner blk of 4 w/gutter.	10.00	353	1254	L	Romania: Used blk of 4 with corner foldover & misplaced perfs.	10.00
295	CE2	J	OG Blk of 4 with corner fold.	7.50	354	267	L	San Marino: OG Horiz imperf.	20.00
G. Entires, Covers & Postal Card EFO's:					355	269	L	San Marino: OG Vert imperf.	20.00
296	269	L	Bisected stamp used on "Waltham, Mass" piece - front only.	10.00	356	47	K	South Australia: Used misperf w/vert perfs shifted down.	10.00
297	300	L	Used front w/4mm misperf to right.	10.00	357	1	K	Tibet: NG Under-inked printing.	10.00
298	634a	K	3 - Die II on cover w/special delivery.	50.00	This ends the list of consignments received for inclusion in Auction #60. Please note that the following lots were not photographed (NP): 13, 163, 252, 310, 313, 314 & 315.				
299	634a	K	Same as #298 except registered cover.	60.00	I would like to thank the following members for donating material to our auction:				
300	784	K	Misperf 3mm at top; used on cover.	10.00	Joe Licata --- Lot #6				
301	1096/1111	L	3 - FDC's with color misregistrations.	7.00	Joe Licata for John Tison Jr. --- Lot #200A				
302	1560	L	Vert misperf w/design change on cover.	15.00	John Hotchner for Lou Repeta --- Lot #282				
303	1690	L	Intaglio shifted up 4mm on cover.	10.00	Good luck - Ed				
304	U6	M	Die 3 Albino.	10.00					
305	U550	M	Missing 98% of purple ink.	15.00					

This ends the list of consignments received for inclusion in Auction #60. Please note that the following lots were not photographed (NP): 13, 163, 252, 310, 313, 314 & 315.

I would like to thank the following members for donating material to our auction:

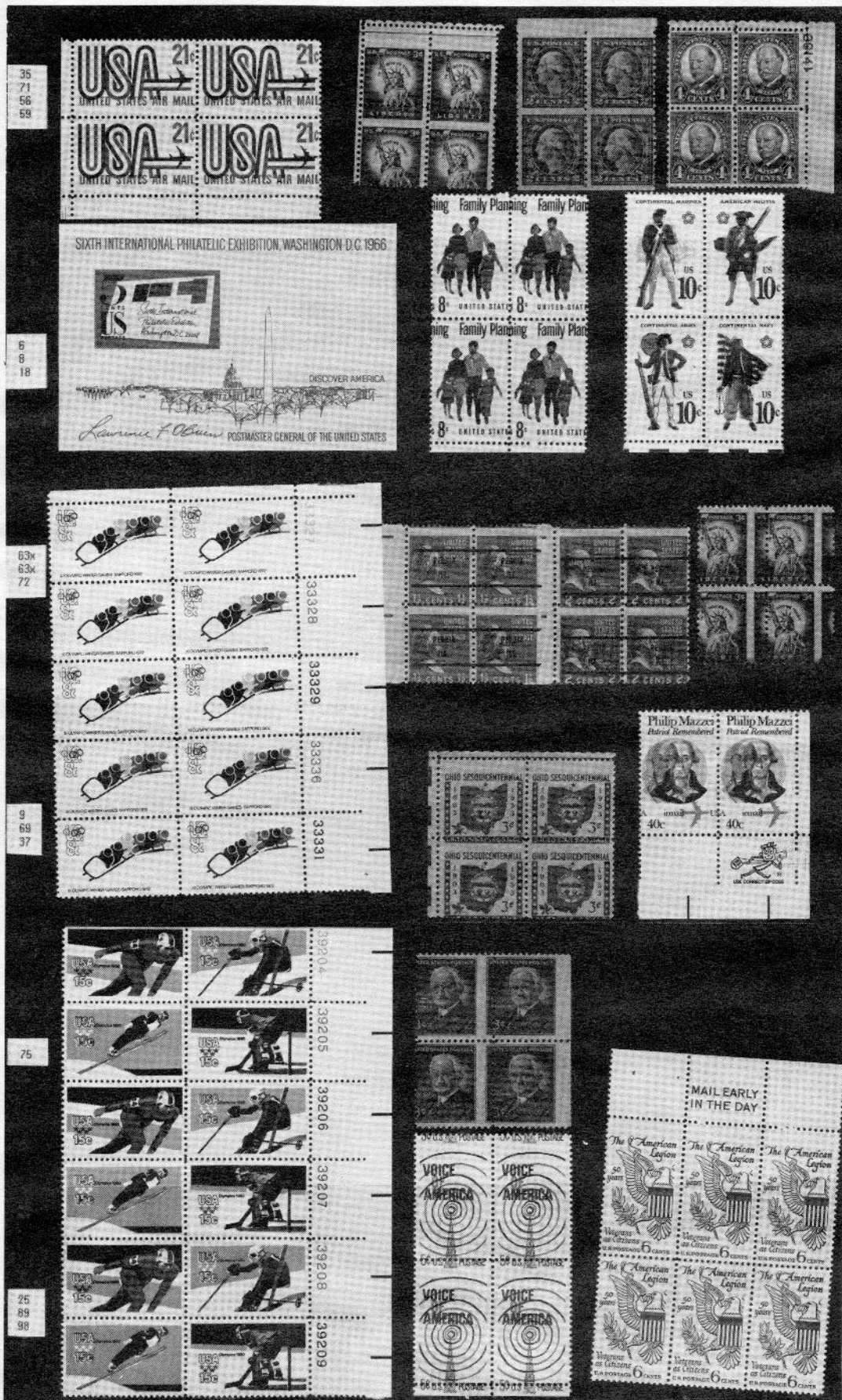
Joe Licata --- Lot #6

Joe Licata for John Tison Jr. --- Lot #200A

John Hotchner for Lou Repeta --- Lot #282

Good luck - Ed





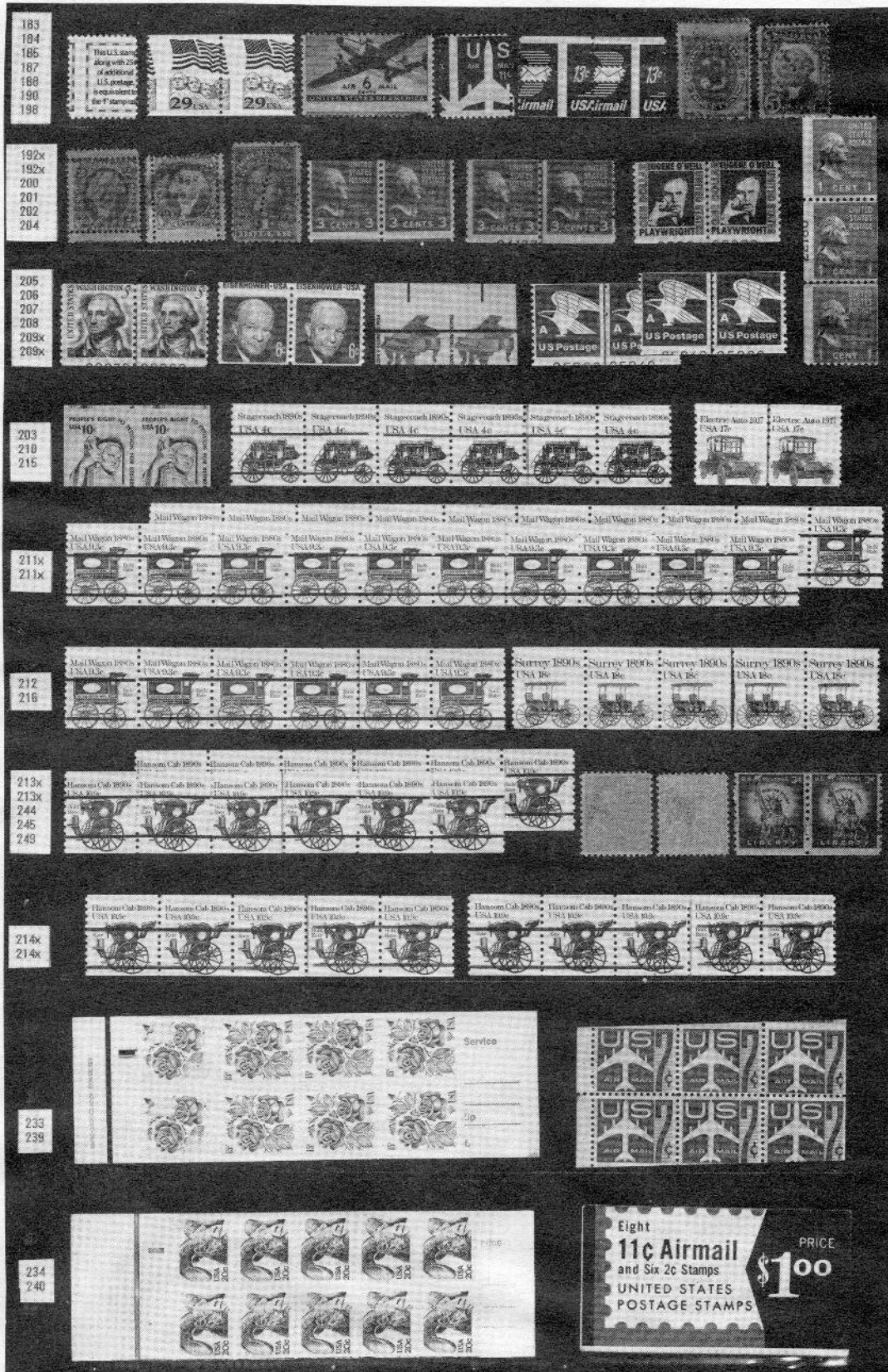
Auction Page D







Auction Page G





Auction Page I





Auction Page K

323-mix
325-mix
326-mix
327-mix
327-mix

321-mix
321-mix
328-mix
328-mix
329-mix

324-mix
324-mix
330-mix

331-mix
331-mix
332-mix
332-mix
333-mix

334-mix
334-mix
335-mix
338
339
340

340
341
344x
344x

336
337
347
352
356
357

298
299

438 *Anderson Ave*
Chen Ohio

ARRON
MAY 21
SCOTT
OHIO

Static
Colo

54672

REGISTERED
NO 422

Floyd D. Shockley
% Fletcher Savings & Trust Co.
Indianapolis, Ind.



253
266
317

304
305
306x
308x
311



RECEIPT FOR CERTIFIED MAIL—30¢ (plus postage)

POSTAGE
DATE

STREET AND NO.

CITY, STATE AND ZIP CODE

OPTIONAL SERVICES FOR ADDITIONAL FEE

RETURN TO SENDER (check box) ☐ 15¢

RECEIPT (check box) ☐ 15¢

DELIVER TO ADDRESSEE (check box) ☐ 15¢

SPECIAL DELIVERY (extra fee required) ☐ 50¢

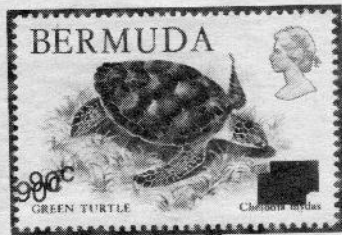
PS Form 3860 NO INSURANCE COVERAGE PROVIDED (see other side)
50¢ (1971) NOT FOR INTERNATIONAL MAIL

No. 034426



UNITED STATES POST OFFICE
WASHINGTON, D.C.





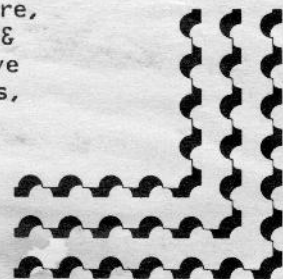
GREAT ndiitirB ERRORS



For 20 years we have been the foremost European dealers in freaks and errors. Our unrivalled expertise is backed by the most extensive stock.

The very fact that we have handled more G.B. and Commonwealth major errors than any other dealer only goes to prove that it pays to contact B.Alan.

To receive a full colour brochure, copies of our latest newsletter & full details of our comprehensive British & Topical error services, Send \$2 to the address below.



27 Maiden Lane, London WC2E 7JS.
 Tel: 071 836 2391 or 071 836 3780
 ENGLAND

BRIAN REEVE,
 B. ALAN LTD.

J. E. McDevitt, 1903 Village Road, W.
 Norwood, MA 02062-2524

Address Correction Requested

BULK RATE
 U.S. POSTAGE
 PAID
 WOODBRIDGE, VA
 PERMIT NO. 70

BERTRAM C. RICK 3030792
 3001 SEAWIND DRIVE
 ANCHORAGE AK 99516

This is the bimonthly journal
 of the EFO Collectors' Club.

PLEASE EXPEDITE