

The EFO Collector

Published by the EFO Collectors' Club, a nonprofit organization
Initiation fee, \$1. Annual dues, \$12, U.S. and Canada; Overseas, \$25.

Copyright 1988 by the EFO Collectors' Club.
APS Affiliate No. 103. Member CPOD.

President: John M. Hotchner

Editor: Howard Gates

Volume X, No. 6 (#58)

June 1988

Founded 1978

President's Message: Hail and Farewell--

It's accounting time; my last message to you as President of this fine organization before President-elect Lou Repeta begins his two-year term on July 1.

By accounting time, I mean that I go back to my EFOCC current projects and goals lists from July 1, 1986 and October 1, 1987. On the whole, I'm pleased. We have had several major changes during the past two years, not the least of which have been in the three positions in the organization requiring the most hours of work:

Howard Gates taking over as editor,

Joe Licata assuming the bimonthly auctions,

and Jim McDevitt, elected in '86 as EFOCC Secretary.

We are a thriving organization today primarily due to the outstanding work of those three gentlemen. Many others have made major contributions and I am grateful to you all.

Several tasks remain to be accomplished and I ask that you, the members, support President Repeta and the new Board as you have supported me. May I beat you all over the head one more time by asking that you start by paying your dues promptly, using the renewal coupon in the center of this issue-- and that you complete the WESTPEX 89 questionnaire just opposite the renewal notice and send it to me ASAP. The club needs you!

--John M. Hotchner

Contents--



Page 3

McAfee: Booklet Panes, Plate	4
Numbers and Miscuts	
Hotchner: Crazy Cancels	9

From the Editor	2
Missing Inscriptions	3
from Canada	
EFO Post	5
To the Editor	6
Datz's U.S. Errors	7
Secretary's Report	7
Exhibitions and	8
Exhibiting	
More British Beauties	10
WESTPEX Questionnaire	11
Membership Renewal	13
Auction	15

Spring Fever--

Has it struck us all?

Your editor examined his in-box on May 1 to find-- nada. Not an article on plate smears, imperfs, missing inscriptions, gutter snipes, John Paul Jones, plate cracks, coil varieties, misperfs, color shifts, inverts, omitted colors, foldovers, stamp economics-- nothing. C'mon, members, your contributions are what make this journal sing! Without them I'll have to go back to painting concrete blocks.

I'm pleased to report that no one reported receiving the April issue late. Apparently our third-class mailing direct from the printer is working.

Ready for another word-mutation puzzle? Try getting from "FREAK" to "ERROR" in 15 steps, changing one letter at a time and realizing a new English word at each step. You're allowed just one proper noun.

0	F	R	E	A	K
1	---	---	---	---	---
2	---	---	---	---	---
3	---	---	---	---	---
4	---	---	---	---	---
5	---	---	---	---	---
6	---	---	---	---	---
7	---	---	---	---	---
8	---	---	---	---	---
9	---	---	---	---	---
10	---	---	---	---	---
11	---	---	---	---	---
12	---	---	---	---	---
13	---	---	---	---	---
14	---	---	---	---	---
15	E	R	R	O	R

--Howard Gates

ALL CONTENTS COPYRIGHT 1988 BY THE EFO COLLECTORS' CLUB. Authors and contributors have express permission to reuse any of their material elsewhere without restriction. Except for material reprinted herein, or material individually copyrighted by the author, material herein may be reprinted elsewhere as long as full credit is given to *The EFO Collector*, citing the issue date and number, and giving the address of the EFOCC secretary.

The EFO Collector is published six times yearly in even-numbered months. The deadline for any issue is the 15th of the month preceding the month of issue-- e.g., May 15 for the June issue. Send editorial material directly to the editor.

Membership includes subscription to *The EFO Collector*. Application for membership, accompanied by \$13 (\$26 overseas) to cover the first year, should be sent to the Secretary.

Advertising for *The EFO Collector* will be accepted at the following rates: first insertion-- full page, \$28; half page, \$15; quarter page, \$8; classified ads, 6c per word. Discounts on subsequent insertions of the same ad: second insertion, 5%; third, 10%; fourth and subsequent, 20%. The first insertion must be fully prepaid. Deadline for ad copy: tenth of the month prior to the month of issue. Advertisements, ad payments and related inquiries should be directed to the Advertising Director.

EFOCC members are entitled to three free 35-word (excluding address) classified ("EFO POST") ads annually. These should be sent directly to the editor.

1986-1988 EFOCC OFFICERS AND CHAIRMEN

PRESIDENT

John M. Hotchner
P.O. Box 1125
Falls Church, VA 22041-0125
Phone: 703-820-5449

VICE-PRESIDENT

Lou Repeta
76 Biltmore Ave.
Oakdale, NY 11769
Phone: 516-567-9294

TREASURER and AWARDS DIRECTOR

Phillip E. Nazak, Sr.
70 Hill Ave.
Johnson City, NY 13790-2914
Phone: 607-729-4783

SECRETARY

CWO James E. McDevitt, USCG Ret
1903 Village Rd., W.
Norwood, MA 02062-2524
Phone: 617-769-6531

EFOC MAILER

E. Steven Brand
P.O. Box 86
Marathon, FL 33050

ADVERTISING DIRECTOR

Dennis Ryan
120 E. St. Lawrence Ave., #213
Janesville, WI 53545

BOARD MEMBER AT LARGE

Stuart M. Krensky
Suite 9-L, 1716 Ocean Ave.
San Francisco, CA 94112

AUCTION DIRECTOR

Joseph A. Licata
209 E. 11th Ave.
Conshohocken, PA 19428
Phone: 215-825-7385

EDITOR

Howard P. Gates, Jr.
Box 955, Lake of the Woods
Locust Grove, VA 22508
Phone: 703-972-2084

CIRCUIT DIRECTOR

Howard A. Pohl
4119 West Park Road
Hollywood, FL 33021
Phone: 305-963-3516

PUBLICATIONS DIRECTOR

Daniel S. Pagter
P.O. Box 6394
Albany, CA 94706

PUBLICITY DIRECTOR

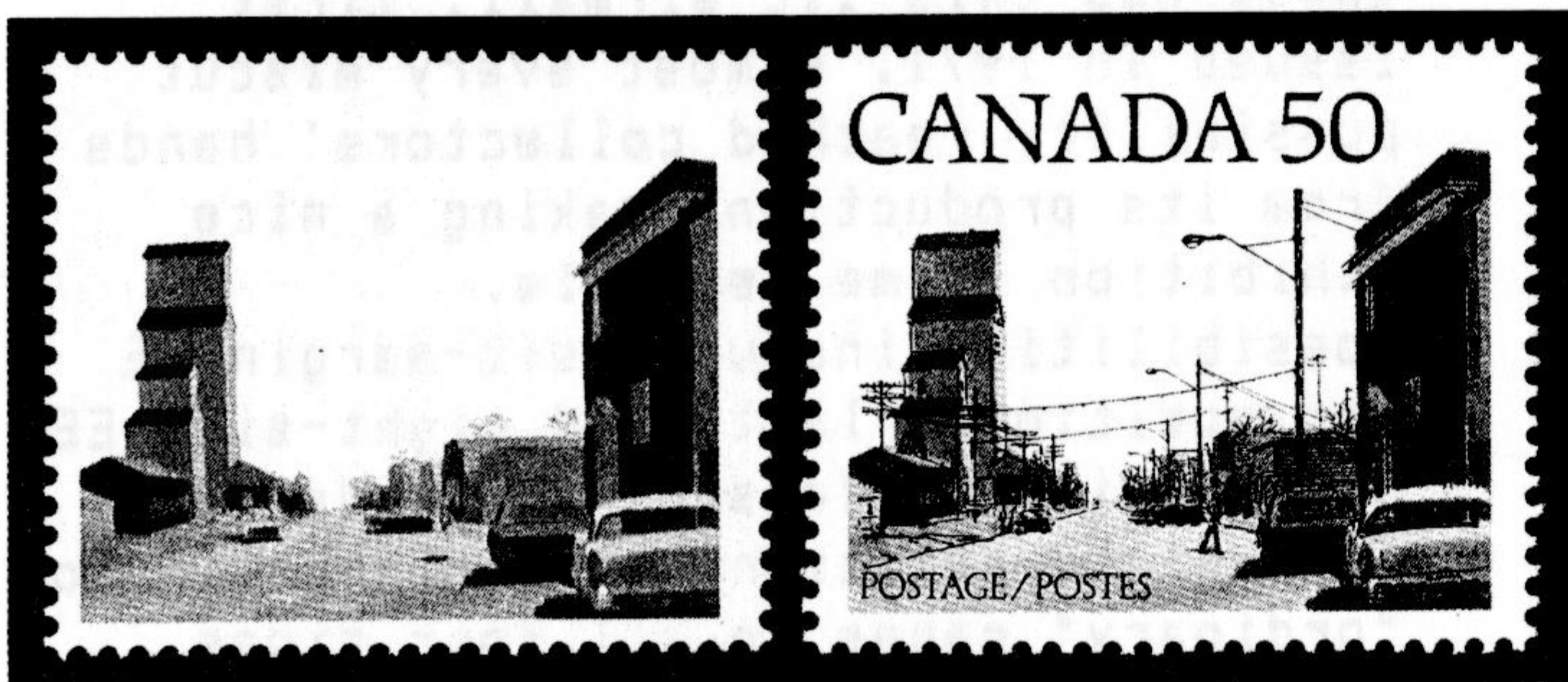
Richard H. Hunt
23 Old Orchard Lane
Trumbull, CT 06611

Missing Inscriptions From Canada--

The 1977-1982 definitives of Canada are a source of three of that country's most spectacular errors.

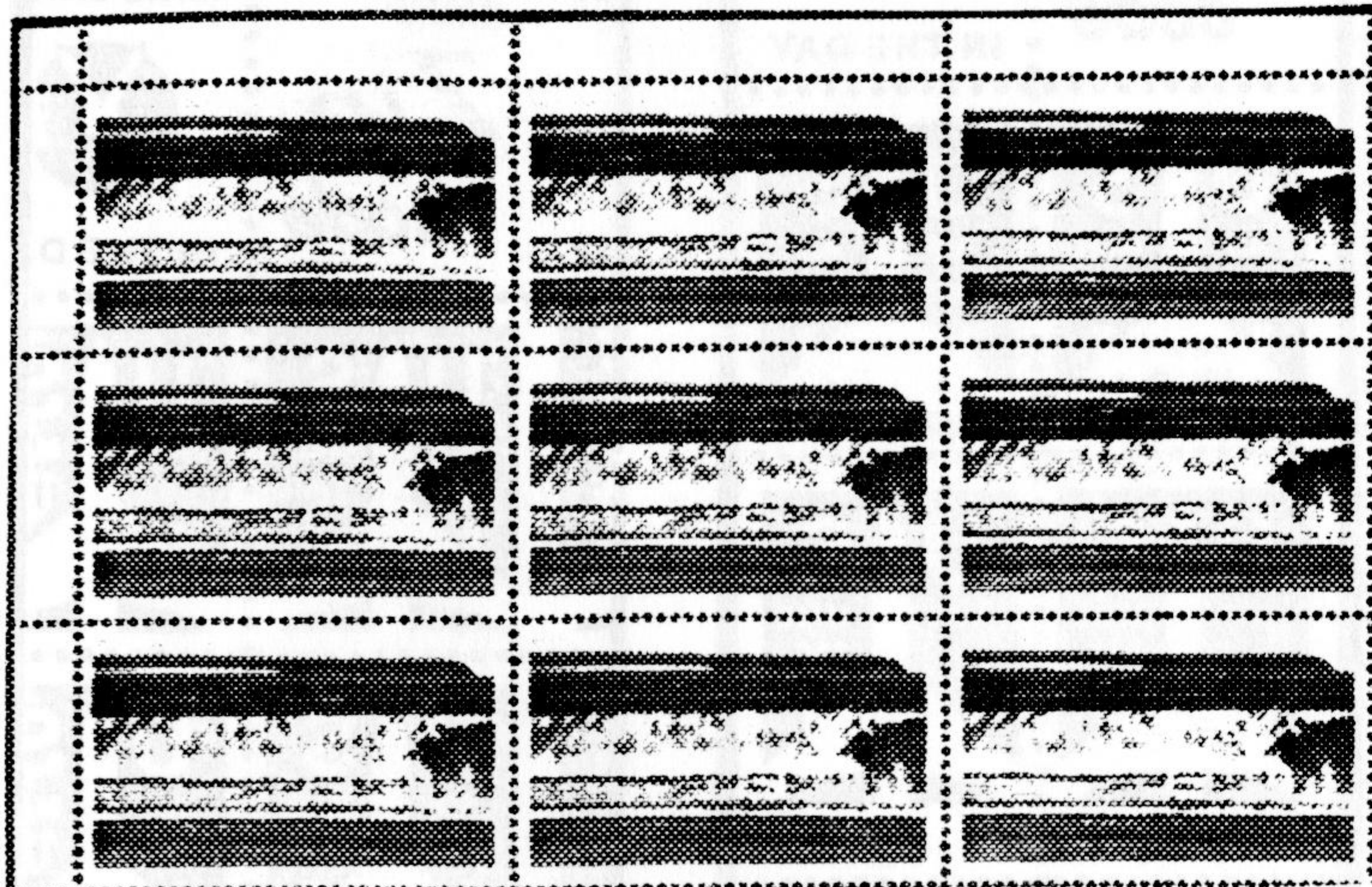
50c Prairie Street Scene

Scott 723, the 50c Prairie Street Scene, absent the brown inscriptions "CANADA 50" and "POSTAGE/POSTES" was found in the Dundas postoffice in Toronto. Only one sheet of 50 is known.



\$1 Fundy National Park

A complete pane of 50 of the \$1 Fundy National Park, Scott 726, missing the inscriptions "FUNDY" and "\$1 POSTES/POSTAGE CANADA", was discovered in 1982 in Hamilton, Ontario. This was the fourth pane reported, and is probably the last, as the stamps are printed in sheets of 200 stamps and then cut into four postoffice panes.



The first pane was discovered in the Elmira, Ontario postoffice. Seven copies from the pane had been sold and are presumed to have been used on parcels. The remaining 43 are said to have been divided among postal employees and sold to local collectors.

It is not unusual for one pane to turn up in Eastern Canada and another to be found in the West, as was the case with this error. Most of the second reported pane of 50 was discovered by a collector in the Delta, British Columbia area. Four copies on two registered envelopes used in the area are known, and presumably came from this pane.

The third pane was found in Kamloops, British Columbia. This pane, not in the best of condition, has been split up and sold.

\$2 Kuane National Park

Finally, the highest value of the series, the \$2 Kluane National Park, Scott 727, has turned up with the silver inscription-- the denomination and "CANADA"-- absent. The total number of these errors was not reported.



The material from which this article was drawn was provided by John Jamieson, Managing Director of Saskatoon Stamp Centre, Saskatoon, Saskatchewan.

Earl McAfee:

BOOKLET PANES: PLATE NUMBERS AND MISCUTS--

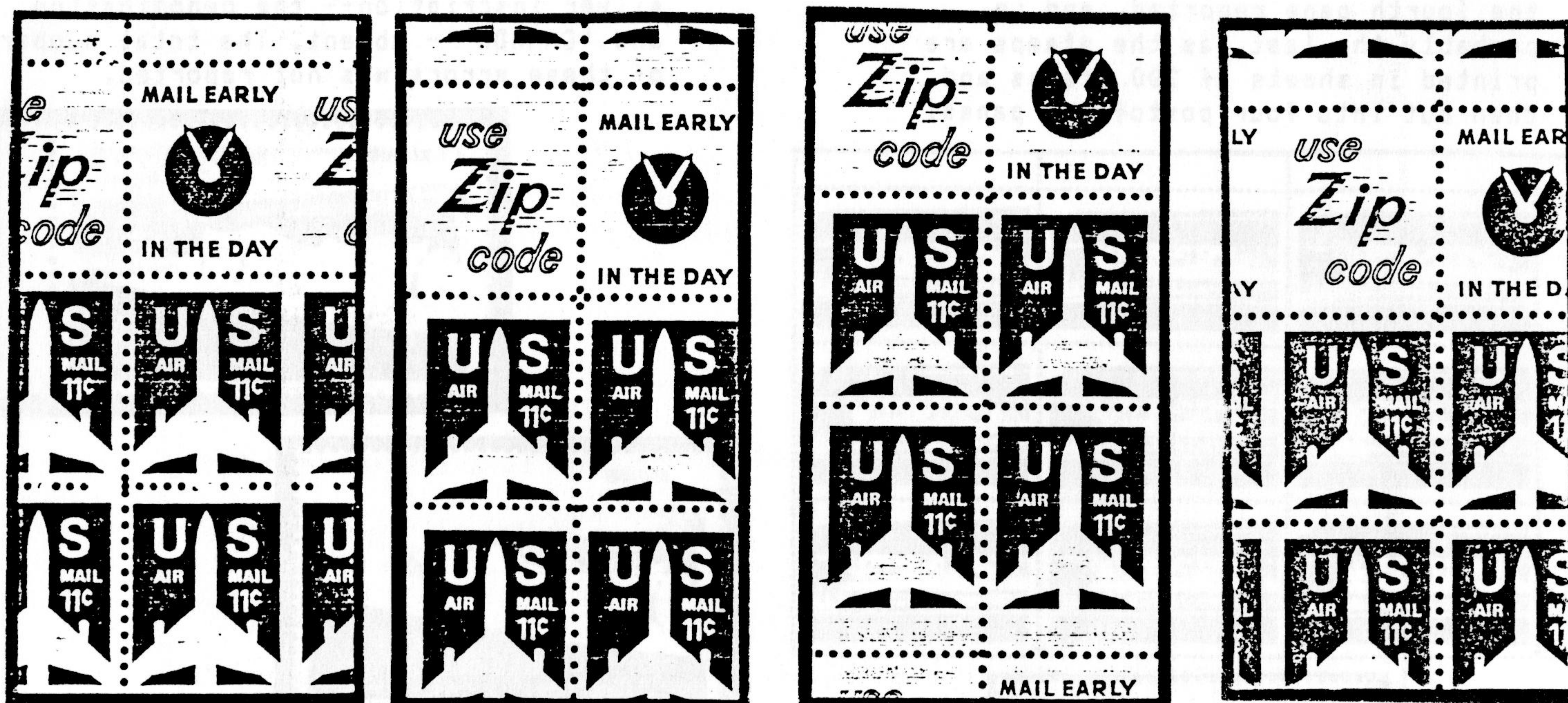
The Booklet Study Group is working with *Durland* editor George Godin on a cooperative venture-- the reporting of plate numbers normally trimmed off booklet panes.

Our portion of this effort is divided into three reports: 1) 360-subject panes with 100% numbers; the author is Bruce Mosher, Box 3236, Indialantic, FL 32903; 2) 360-subject panes with right-side numbers, written by Mike Perry, 3150 Harris St., Kelso, WA 98626; 3) 320/400-subject panes with any numbers; Bruce Mosher and Mike Perry are co-authors. If you have any material fitting these categories, the authors would appreciate hearing from you at once. The first of these reports is due to be published in the next issue of *The EFO Collector*, and the second will follow soon. If enough information can be developed, George Godin will add these tabulations to a

special section in *Durland*, THE reference book on U.S. plate numbers.

Correspondence with Michael Holly has prompted a brief mention of Scott C78a. Some booklet issues were more prolific in EFO opportunities than other; one of these was this 11c airmail, first issued in 1971. Almost every miscut possibility reached collectors' hands from its production, making a nice exhibition frame feasible.

Possibilities include left-margin EE bar positions, left- and right-side EE dash positions (miscut and wide cut), four plate positions, and miscutting of "ordinary" panes to all four sides. Foldovers could add spice. All of these types of miscuts have been discussed in earlier *EFO Collector* articles; but for the C78a issue we have drawn from the collections of the Booklet Study Group the best "non-position" miscuts for illustration in Figure 1.



Right

Top

Bottom

Left and top

Figure 1: Miscut "additions"

Booklet Panes: Plate Numbers and Miscuts--*(Continued from the preceding page)*

Considering that new booklet-forming methods were used to produce the 22c Flag/Fireworks booklet panes, it seems that very few EFO panes have been reported to date. Lot 172 in our April 1988 auction pictured a rather minor miscut. A more interesting one is reproduced from Linn's February 15, 1988 issue, page 22, and is shown in Figure 2. A nice little smear was reported by Harry Stager, and appears in Figure 3. What would be of real interest to booklet collectors are miscuts showing marginal markings that should have been trimmed away--especially from positions that normally couldn't be identified.



Figure 3.



Figure 2.

The yellow ink number (third number of the four-number series) on the "E" books is extremely hard to decipher. However, Bob Kitson reports a legitimate variety, confirmed from several areas of the country: On plate cylinder 1111, the yellow "1" may be completely missing. According to Kitson, if you're into the correct box of booklets, the variety will repeat every twelfth booklet. Initial speculation is that it might be a "broken inking-in roller" variety.

If you would like to review previous booklet articles in *The EFO Collector*, the study group has roughly indexed them, starting with the February 1979 issue. For a copy of this index, send 35c in postage to Box 3266, Champaign, IL 61821.

To keep the Booklet Study Group's articles interesting and timely, we need to hear from you about your findings. Keep us informed!

EFO Post--

WANTED: Great American EFOs. Send to Gary McNabb, 24 Fairfield Rd., Fairfield, NJ 07006

UNITED NATIONS EFOs wanted. Buy, sell, trade. Stamps, stationery, souvenir cards. Ken Blevins, 7814 Kincardine Court, Alexandria, VA 22310.

FOR SALE: Scott 1934 MNH error with vignette shifted down 6mm. Top and bottom margin copies, \$19; balance of singles, \$17; pairs and blocks prorated. P & I, \$1 extra. E. Close, 2 Elm Lane, Williamson, NY 14589.

FOR SALE-- Selling my duplicates: misperfs, color shifts, color omitted, imperfs, PNC varieties. Howard Helfant, 3300 Parkway Drive, Baldwin, NY 11510.

WANTED: Imperforate error pairs US 1035c and 1035d. Send price to M.L.Holly, 369 North Seventeenth St., San Jose, CA 95112-1848.

To the Editor--

**John Campbell of Nashville Tells What It's Like On
His Side of the Street--**

It's been so long ago that I don't recall the first EFO that I ever found-- but for sure it found its place in the back of my album. EFOs accumulated there until, one day, I read an article by John Hotchner. I wrote to him, and before I knew it I became a member of the EFOCC.

Not being the rich kid on the block, I couldn't afford mint EFD material. But I had an advantage others did not have: access to thousands of empty envelopes. In going through over one hundred thousand envelopes a week for seventeen years I've spotted many strange stamps that people had used for postage-- ones that were perforated way off, or had colors blended, or were fuzzy-looking.

All in all, I collected a good-sized bunch of them.

One day I stuck my neck way out and put these gems in a stamp show. But the judges at that time hadn't seen much EFO material-- the famous 24c airmail invert was as close to EFOs as most people ever got.

It's taken years to educate these judges, but it's finally paying off. So come on over to my side of the street, and we'll give the world a new eye-opener.

--John P. Campbell

A sampling of Mr. Campbell's used EFOs is shown below. -Ed.

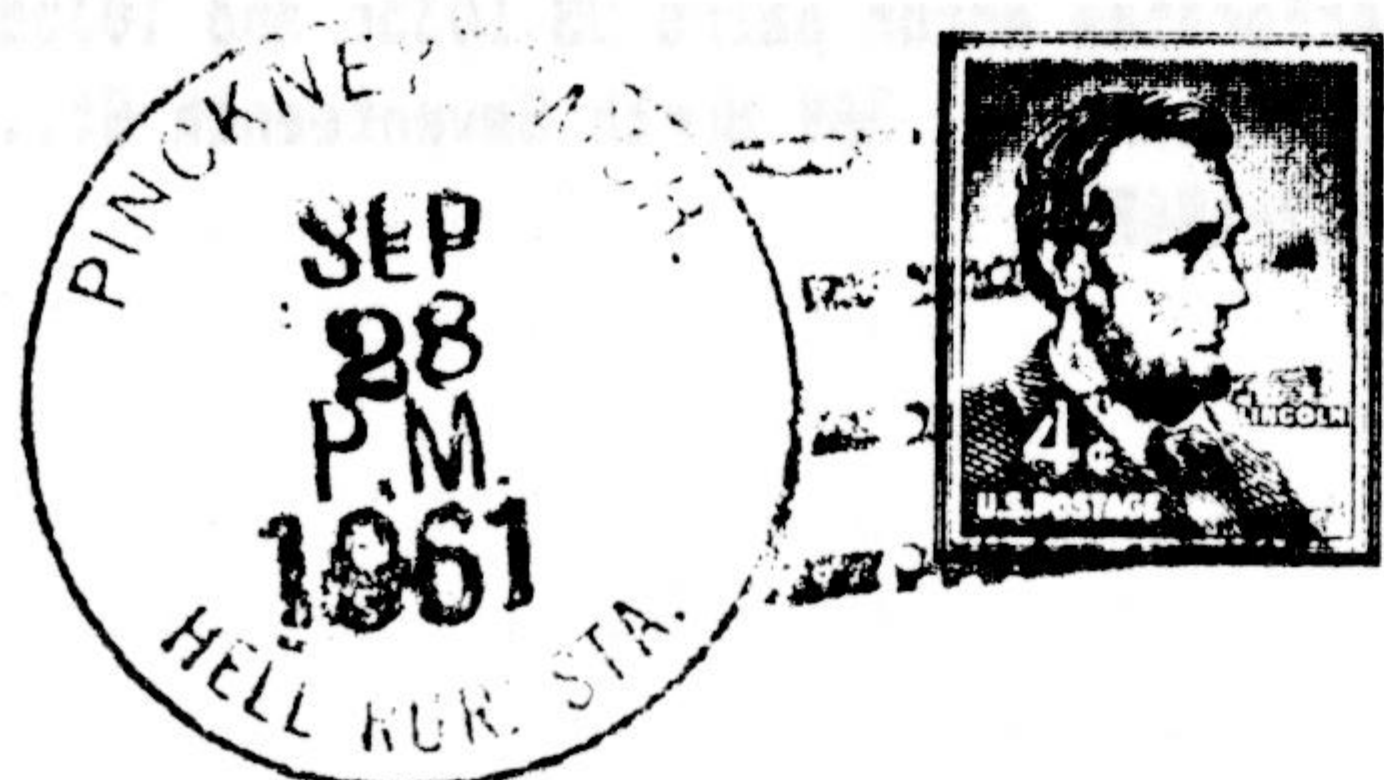


Another Hell--

There really was no need to travel all the way to the British West Indies to go to Hell. As you can see by the enclosed cover postmark, Hell's right here in the U.S.A.!

--Ken Bergman

--Ken Bergman



Chinese Puzzle--

It's not important that I write Zhang Zhi Wei about his article in the April *EFO Collector*, because I have no explanation [for the erroneous postmark date of February 29, 1986.] But March 1, 1986 was a Saturday, not a Sunday. Thus the canceler date was off by two days, not one-- or else the lady who went to the P.O. was groggy herself and forgot what day it was.

--Bill Menker

Continued on the next page

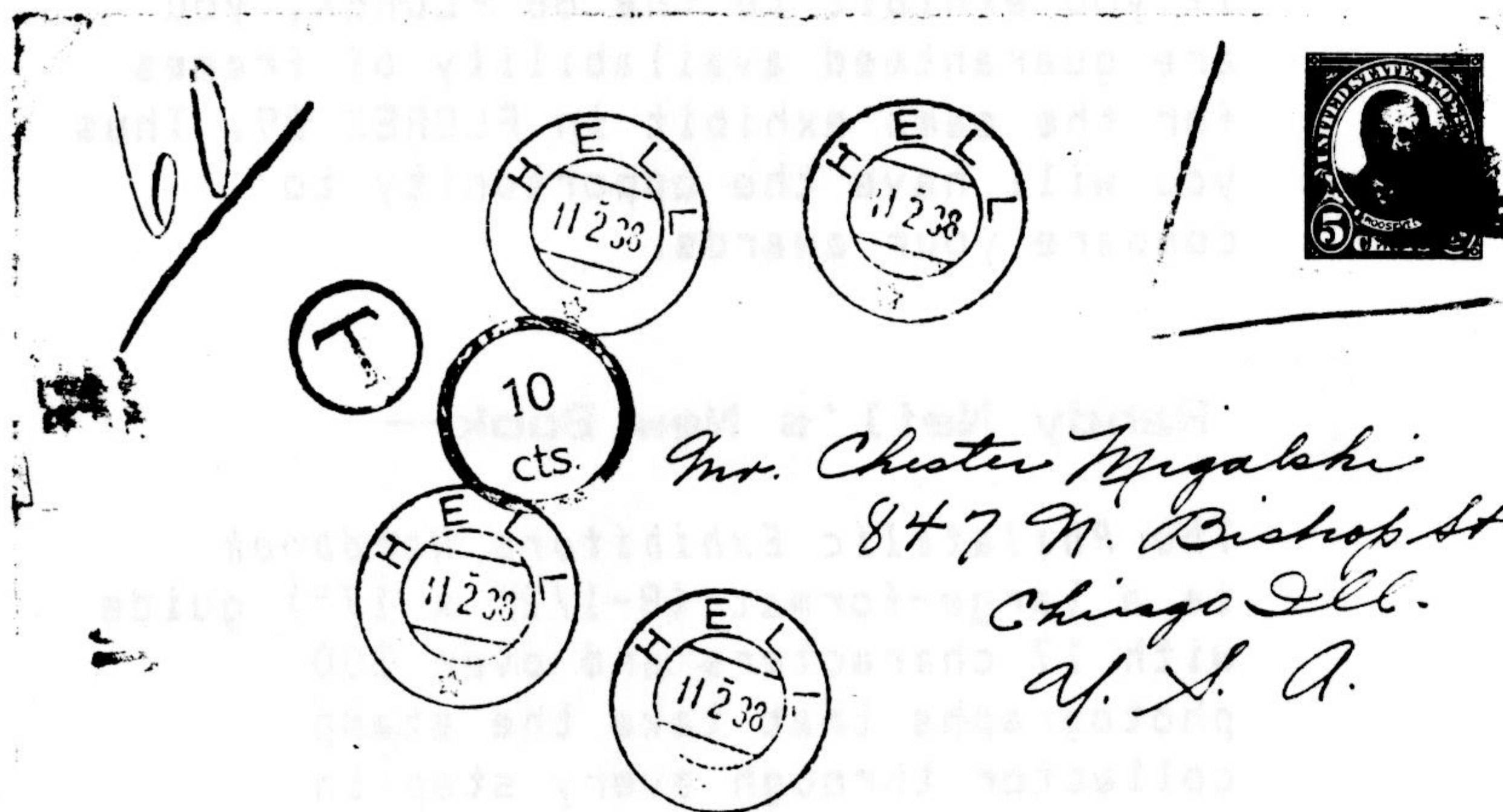
To the Editor--

(Continued from the preceding page)

Still more Hell--

Your "To Hell and Back" in the April issue sent me to my cover box for more Hell on Earth. (Are there any Heavens?)

Below is an incomplete cover-- a postage due stamp on the left side was removed prior to my getting the cover. Hell, Norway is located about 31 km east of Trondheim. It is a junction of the Norwegian State Railway. At a restaurant on the highway there you can get a receipt proving that you ate in Hell. The airport at Trondheim is nearby, so all who fly into that airport go through Hell to get to Trondheim. Many tourists make a point of sending a card from Hell.



"Hell" has several meanings in Norwegian. The first is an inclination, or slanted or sloped topological feature. The second has to do with prosperity or success. Since the village is located at the base of high hills but also on the coast, either meaning might prevail.

The cover may have been mailed home to the USA by a tourist. The 5c stamp was not, of course, valid in Norway, although it was the proper surface-rate charge from the USA to Norway.

The UPU approved method of showing invalid postage was used-- an obliterating mark on the stamp and blue lines around it. The circled "T" for "Taxe"-- the international symbol for postage due-- was stamped at the Hell postoffice, and the envelope went on its way. The missing postage-due stamp was added in the U.S.

--John Hotchner

**Stephen Datz's
U.S. ERRORS--**

By special arrangement with Stephen Datz, his 1988 catalog, *U.S. ERRORS, Inverts, Imperforates, Colors Omitted* is available to EFOCC members at \$9.95 postpaid. That's a dollar less than the price to the general public. The book, the most comprehensive catalog of U.S. stamp errors, may be ordered from

S.R. Datz
General Philatelic Corp.
P.O. Box 402
Loveland, CO 80539

Please give your EFOCC membership number when ordering.

Secretary's Report--

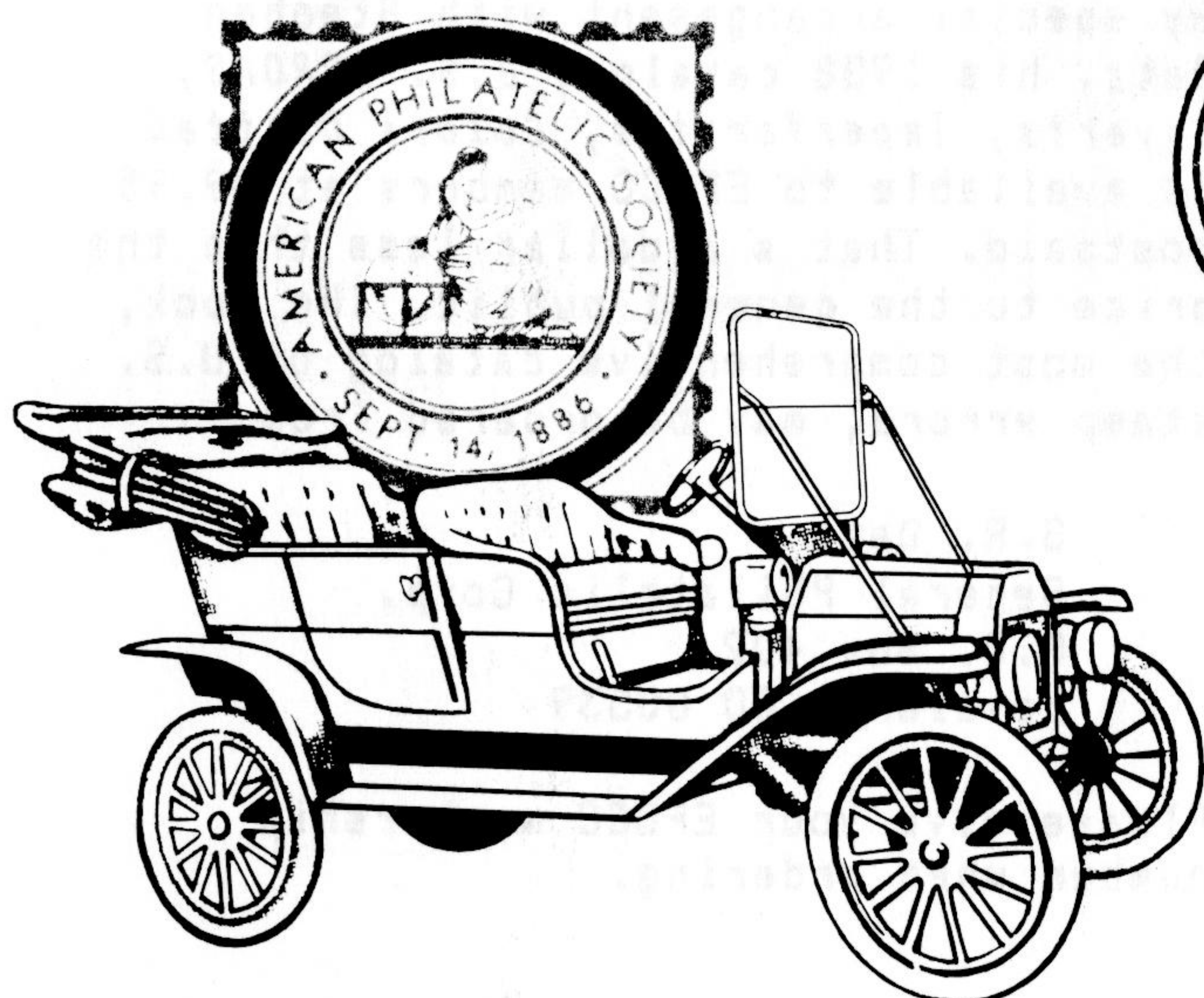
We welcome these new members and their special philatelic interests:

- 651- D.L. Keeler, P.O. Box 5105, Anaheim, CA 92814.
- 652- A.M. Neu, 120 Vermilyea Ave., New York, NY 10034; Japanese issues.
- 653- E.S. Lazarus, 2020 Octavia St., New Orleans, LA 70115.
- 654- P.G. DuPuy, P.O. Box 6237, Keene, NH 03431; Flags and Christmas issues.
- 655- R.W. Lovelace, 524 N. 92nd St., Seattle, WA 98103-3104.
- 656- C.F. Bell, dba CYCLIX, 4886 Candlewood Ln., Stone Mountain, GA 30088; Dealer.
- 657- S. Swanson, 7401 Cahill Rd., Edina, MN 55435.
- 658- G.M. Sabol, Jr., Salinas Star Rte., Boulder, CO 80302.

We thank Les Winick for his recruiting efforts. Membership as of May 1, 1988 is 335.

Reminder: During the American Philatelic Society's 102nd annual convention and STAMPSHOW, August 25-28, Detroit, MI, the EFO Collectors' Club will hold its meeting; the date is Saturday, August 27. The exact time and location will be in the show's literature. For information on STAMPSHOW, write APS, P.O. Box 8000, State College, PA 16803, or call 814-237-3803.

Exhibitions and Exhibiting--



Florida Federation of Stamp Clubs, Inc.

Clyde Jennings, a philatelist well-known to EFOCC members, is the new president of the Florida Federation of Stamp Clubs, Inc., the sponsoring organization of FLOREX. For FLOREX 88 and 89, Jennings has invited the two judging panels at the same time-- now. And both have accepted. The 88 panel comprises five grizzled oldsters, while the 89 panel consists of five "young Turks." Each panel will watch the other work and will compare judgments.

If you exhibit in the 88 FLOREX, you are guaranteed availability of frames for the same exhibit in FLOREX 89. Thus you will have the opportunity to compare your awards.

STaMpsHOW 88 and the 102nd Annual American Philatelic Society Convention will be held in Detroit August 25-28, 1988. STaMpsHOW is the largest annual stamp show in the United States; it will be housed in Cobo Hall, the municipal convention center. A "Champion of Champions" competition will feature as many as 35 Grand Award winners from prestigious national shows. There will also be a large, nationally accredited open competition and a major philatelic literature exhibit. Headquarters hotel for the APS will be the Hotel Ponchartrain, directly across the street from Cobo Hall.

The theme of STaMpsHOW 88 is the automobile; a visit to the Henry Ford Museum in nearby Dearborn will satisfy your appetite for automotive history and fulfill your longing for turn-of-the-century Model T nostalgia.

Winning Members--

Lou Repeta did it again with "The 3c Stuart Washington: A Study of the Stamp and its Uses," winning the Grand award at NASHPEX 88, together with an APS Certificate, the BIA President's Medal, and a large gold. John P. Campbell received a small silver for his "EFOs and Bicolor Cancels."

Randy Neil's New Book--

The Philatelic Exhibitors Handbook is a large-format (8-1/2" x 17") guide with 17 chapters and over 200 photographs that take the stamp collector through every step in preparing award-winning competitive exhibits. It is the first textbook on the subject in nearly 20 years.

Among the focal points of Neil's book are illustrations of exhibit pages from 34 experienced exhibitors. Among the collections represented are the gold-medal efforts of John Hotchner, Richard Jordan, Lynne Warm-Griffiths, Lou Repeta, Carl Kilgas, Mary Ann Owens, Clyde Jennings and many others. The author uses their exhibit pages to demonstrate special techniques used by successful exhibitors. The author has himself been an exhibitor since 1955, and founded the American Association of Philatelic Exhibitors.

The Philatelic Exhibitors Handbook is available now for \$27 (softbound) and \$43 (hard cover) postpaid from the Traditions Press, 10660 Barkley, Overland Park, KS 66212.

Continued on the next page

John M. Hotchner: CRAZY CANCELS--

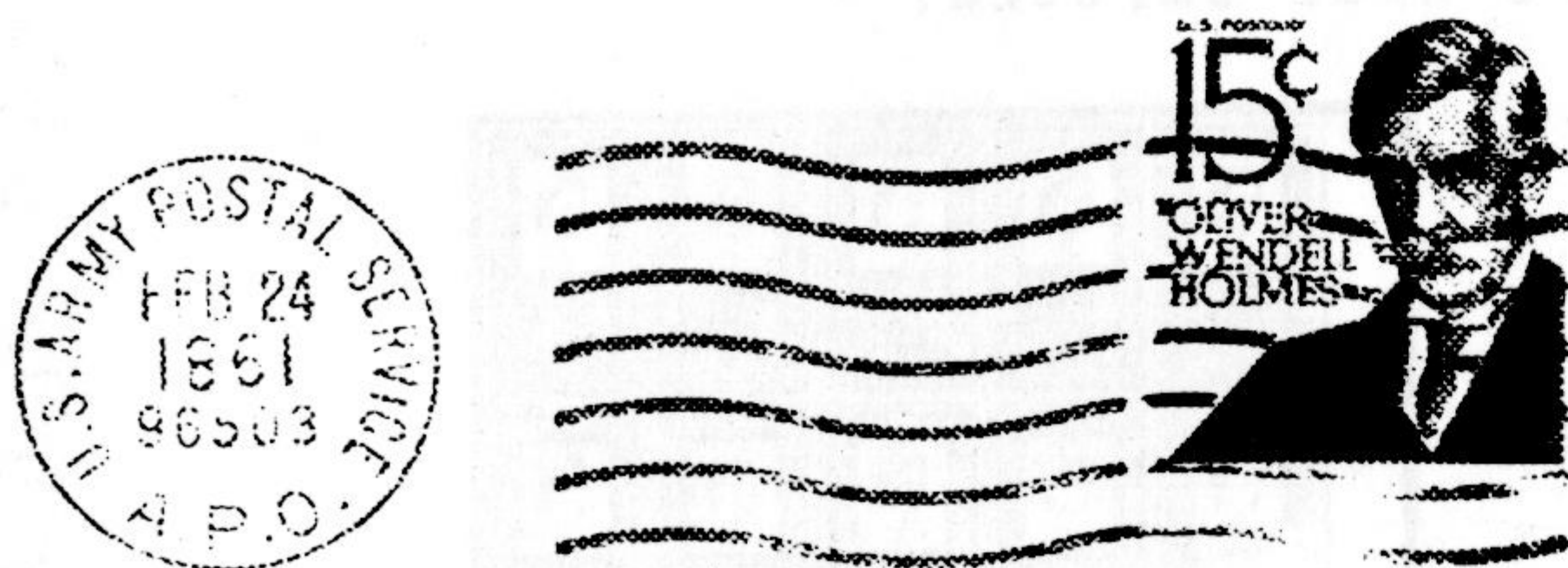
The piece from Z.W. Zhang in the April issue of *The EFO Collector* featured a FEB 29, 1986 circular dater from Austin, TX. I don't know if anyone can match it-- after all, the great majority of such material ends up in the wastebasket. How many people would realize that February 29 wouldn't come around for another two years?

Still, I thought I'd enter a few of my own date collection oddities in this derby. I'm sure editor Gates would be delighted if any reader can top them.

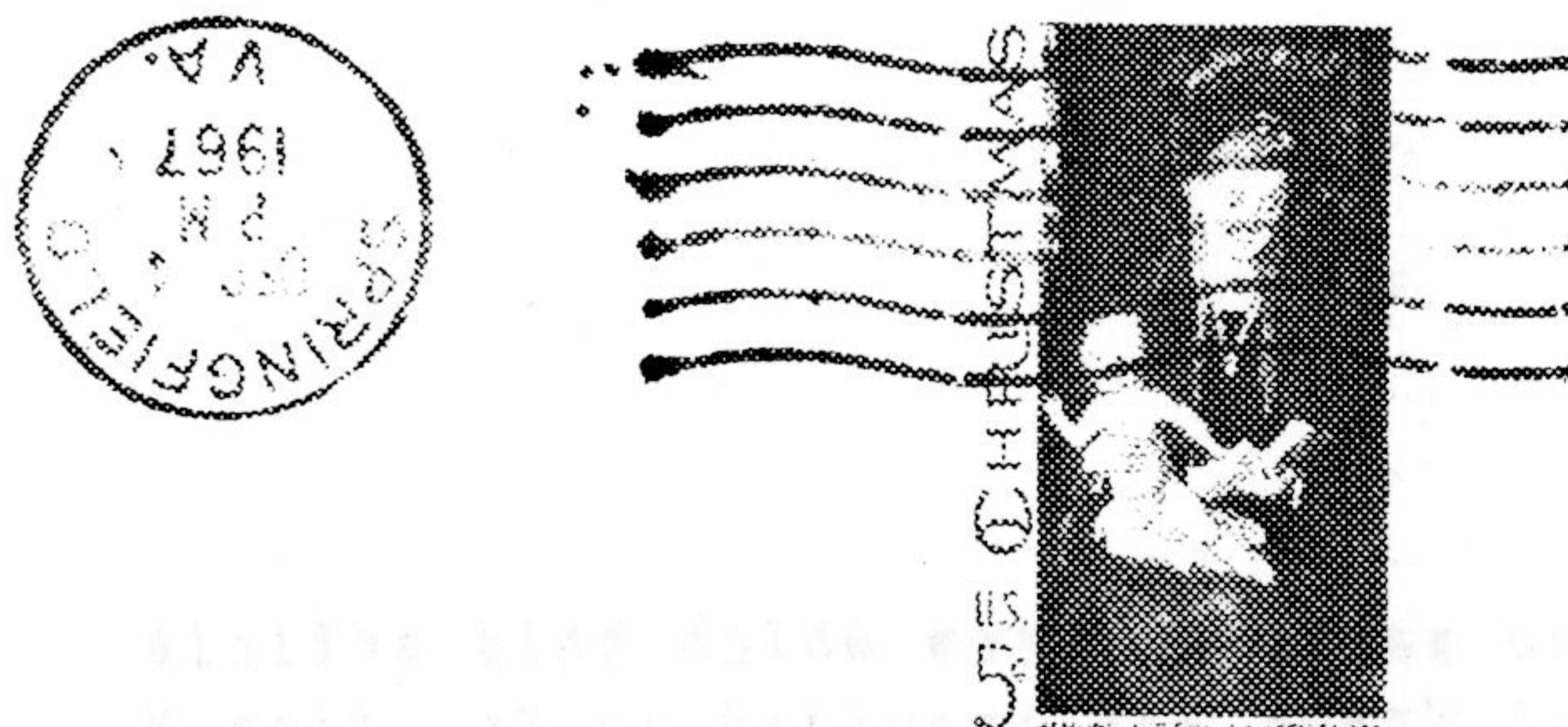
The equivocal month:



The dubious date:



The contrary CDS:



The fifty-year forerunner:



*Mrs. Frankie Packard
37 Ashcroft St
Dalton Mass*

Exhibitions and Exhibiting-- (Continued from the preceding page)

VAPEX 88, Virginia Beach, VA

During November 18-20, VAPEX 88 will host the Eastern Regional Meeting of our EFO Collector' Club. The Eastern Shore area of Virginia includes such historic sites as Williamsburg and Jamestown, and such up-to-date attractions a Busch Gardens and the Norfolk Naval Baase. Make VAPEX weekend a treat for the whole family!

The weekend will feature exhibits including EFO material, excellent dealers, our annual Dutch-treat Saturday-morning breakfast, and a swap-and-shop EFOCC meeting.

Other groups meeting at VAPEX this year include the Official Mail Study Group, International Society for Portugese Philately, British North American Philatelic Society, Virginia Topical Association, Virginia Postal History Society, Mobile Postoffice Society, a chapter meeting of the Society of Israel Philatelists and, possibly, the U.S. Cancellation Club.

Further information and a prospectus may be obtained from John M. Hotchner, P.O. Box 1125, Falls Church, VA 22041.

More British Beauties--

The British postoffice is no less concerned about the inadvertent sale of error stamps than ours. This 14 October 1985 memorandum from the British South Western District Postmaster tells the story: "Following the discovery of a printing error on some sheets of a recent stamp issue, offices are reminded of the procedure to be followed should such discoveries be made: 1. An immediate telephone report should be made to Counter Services Branch. 2. All stocks of stamps of any issue in which errors are discovered should be checked immediately by Officers in Charge/Postal Officers and Subpostmasters. 3. If any mis-prints are found, they should be withdrawn from sale immediately and returned directly to Security Stores Depot..."

Notwithstanding, errors do escape the postoffice and find their way to the philatelic community. Here are a few:

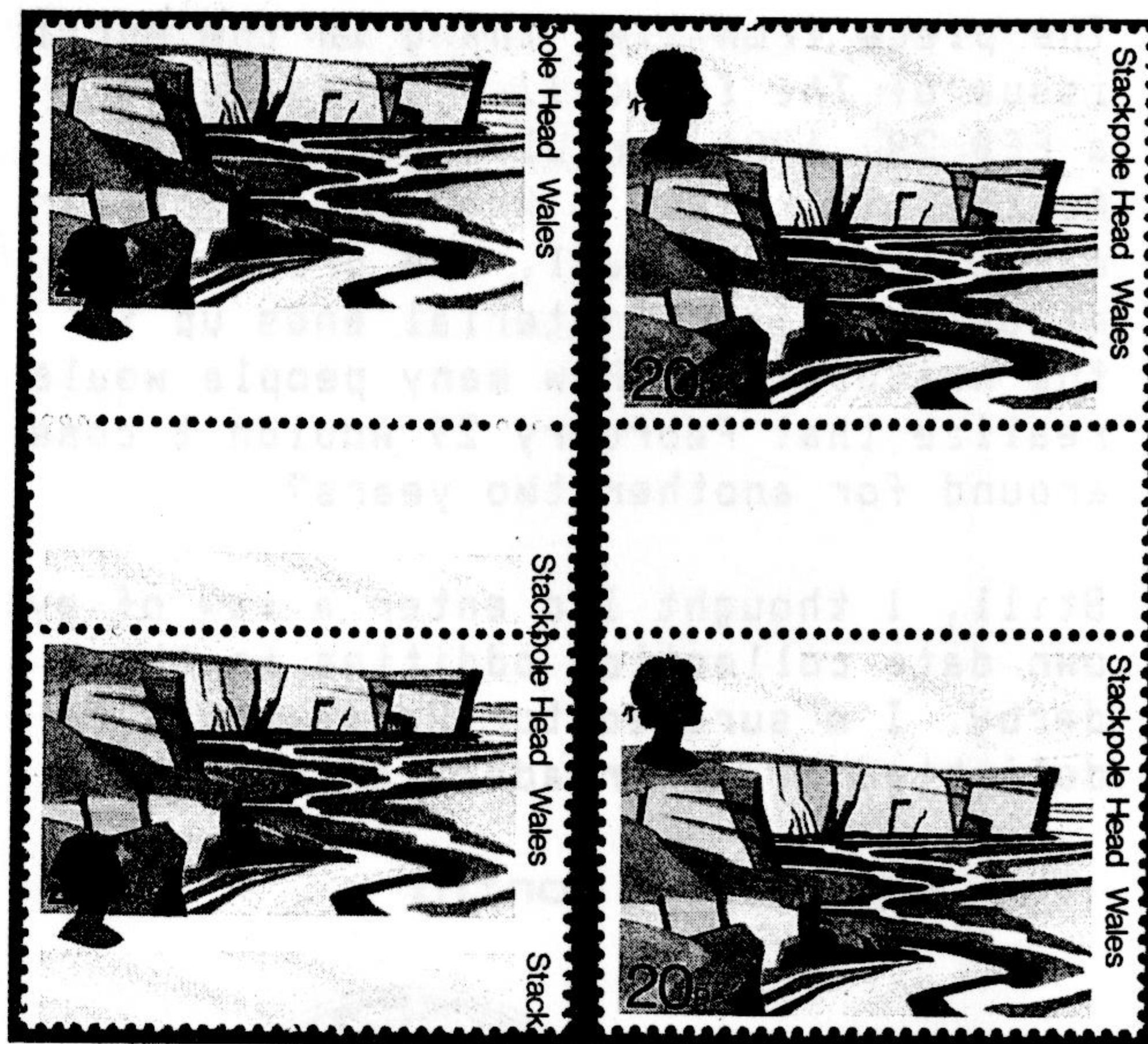
34p Hitchcock Dropped Head (1985)

Normally, the Queen's head is printed above the value. However, a quantity of sheets was issued with the head placed below. The discovery of this error triggered the warning memorandum quoted earlier. Even so, a small number of first-day covers was serviced with the dropped-head error.



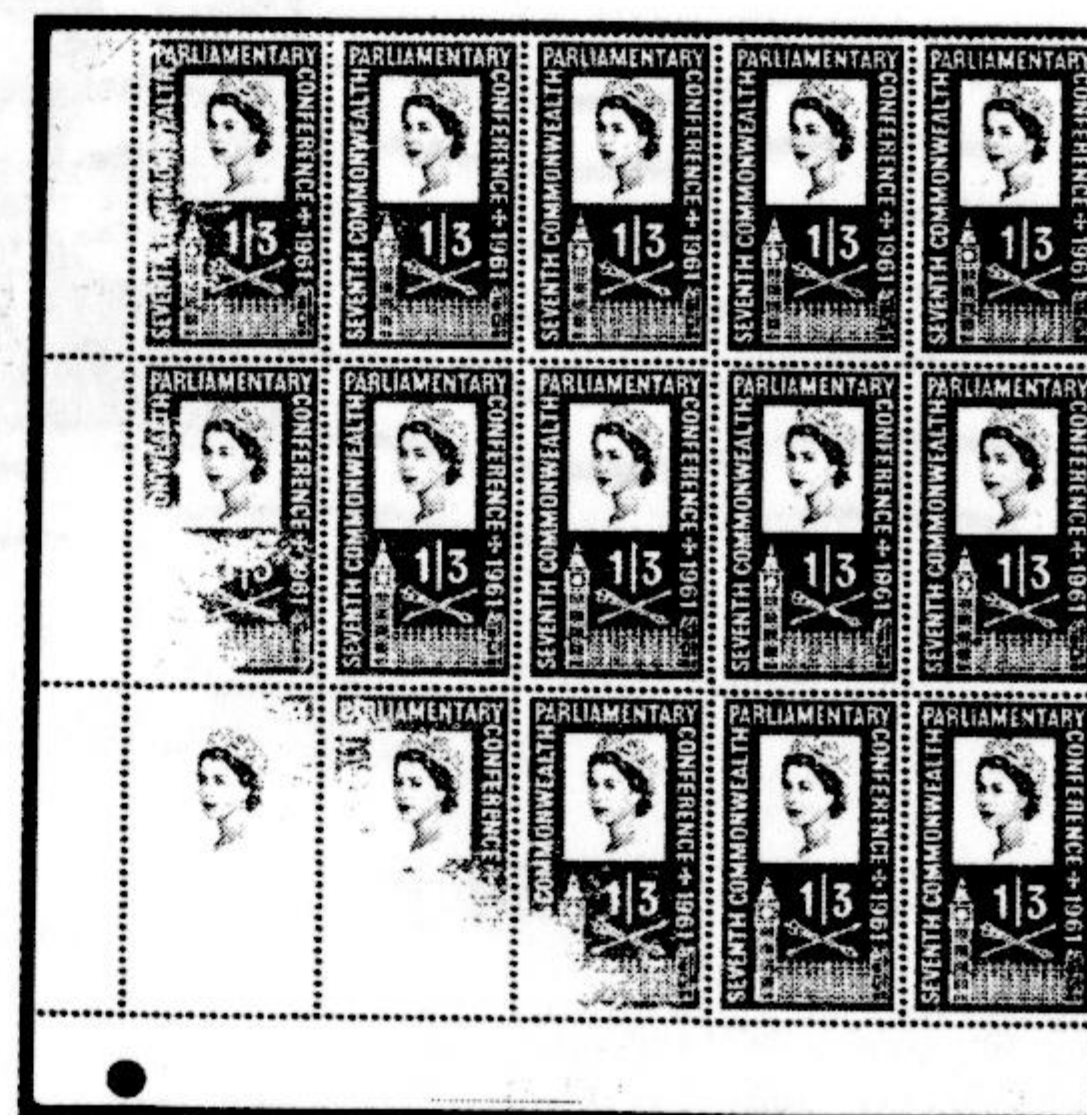
20p National Trust with Color and Perforation Shifts (1981)

Here, the Queen's head has dropped drastically, so that it is centered over the denomination and tends to obscure it. To compound the error, a downward perforation shift of 9mm causes an apparent change of design. It is quite unusual for stamps of Great Britain to have such marked perforation and color shifts simultaneously.



1/3d Parliament Part Missing Green (1961)

No stamp in this block is completely absent its green, but the error is spectacular nevertheless. One stamp is virtually devoid of green, leaving the blue-gray Queen's head on a white background. The stamp also exists with the green printed normally and the Queen's head omitted.



The material from which this article was drawn was provided by Mr. Alan W. Benjamin, Managing Director of B. Alan, Ltd., London, specialists in errors and varieties.

WORLDWIDE STAMPS & POSTAL HISTORY



Schiff Auctions

"Especially for Specialists®"



If you do not get our catalogs you are missing out! Send \$8.50 (\$12.50 overseas) for a year's subscription to catalogs and prices realized or send \$1.00 (\$1.50 with prices realized) for our next auction.

Catalogs picked up at our office are complimentary.

WHAT IS A SCHIFF "ESPECIALLY FOR SPECIALISTS®" AUCTION?

It's an auction designed with YOU in mind, whether you are a buyer or a seller of U.S. or Worldwide stamps.

FUTURE AUCTION DATES
U.S. & Worldwide Stamps and Postal History
AUCTION NO. 191
JULY 1988

Consignments now
being accepted.

(Consignments now being accepted for our future auctions.)

WE INVITE YOU TO CONSIGN

individual stamps, covers or
collections for Public Auction
or Private Treaty Sale.

WE ALSO PURCHASE OUTRIGHT!

Contact us first, describing your material.
Include your address and phone numbers.

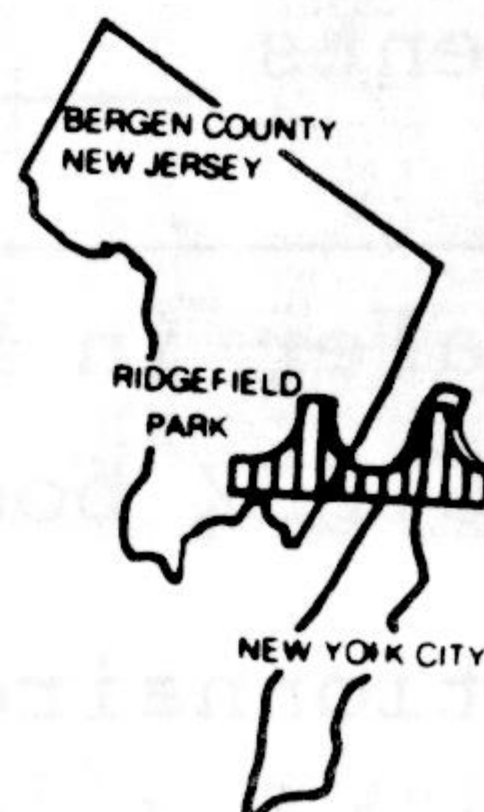


Jacques C. Schiff, Jr., inc.

195 MAIN ST.
RIDGEFIELD PARK, NJ 07660



Licensed & Bonded Auctioneers
Established 1947



TELEPHONE: 201-641-5566, From NYC: 662-2777

A BROCHURE DETAILING OUR SERVICES SENT UPON RECEIPT
OF A STAMPED SELF-ADDRESSED LEGAL SIZE ENVELOPE.

• **ESPECIALLY FOR SPECIALISTS**

• **ESPECIALLY FOR SPECIALISTS**

John Hotchner Urgently Needs Your Responses--

Please complete and return this WESTPEX 89 Questionnaire to him.

NAME OF MEMBER _____

ADDRESS _____

- ☐ I will be attending WESTPEX '89 on date(s) (if known) _____
- The EFOCC general meeting should be on Friday ☐ Saturday ☐
Sunday ☐
- Should we get together for a Dutch Treat Dinner Friday night?
☐ Yes ☐ No
- ☐ I can spend the hours of _____ helping to Staff the
EFOCC Membership table.
- ☐ I can give a program on my EFO collecting field or on some
aspect of EFO collecting. Topic: _____

Whether you are able to attend or not, there are several ways in which
you can support the EFOCC convention:

- ☐ I will exhibit _____ 16 page frames. Topic: _____
- ☐ I will write a short article on an EFO subject for the WESTPEX
program
- ☐ I have an idea for a show cachet ☐ show cancel ☐ (please
attach)
- ☐ I think the EFOCC membership table should display _____
- ☐ I can provide EFO material for a special silent auction to
run from noon Friday to noon Sunday
- ☐ I can contribute EFO material to be used as give-aways or prizes
at the WESTPEX youth booth.

Any other comments _____

- ☐ I am a dealer in EFOs and would like to be invited to participate
in the WESTPEX bourse.

Send this questionnaire or a facsimile of it to:

John M. Hotchner, P.O. Box 1125, Falls Church, VA. 22041-0125

WESTPEX 89-- San Francisco-- April 28-30, 1989

Back issues of *The EFO Collector*--
Volume I, \$7; Volumes III and V, each \$6; Volumes II, IV, VI,
VII, VIII and IX, each \$9. All nine volumes, \$57.
Order from EFOCC Publications, P.O. Box 6394, Albany, CA 94706

Clip along this line

It's Membership Renewal Time! —

Almost all EFOCC memberships expire on June 30. If you're in that category, please take a moment to complete the renewal coupon below, and return it with your check or money order to our Secretary, Jim McDevitt. We'd like to make sure that your membership, your subscription to *The EFO Collector*, and your participation in our bimonthly auction continue without interruption.

The membership dues for the ensuing year are \$12 for U.S. and Canada, and \$25 overseas. To ensure timely delivery of *The EFO Collector*, airmail is used to all destinations outside the United States.

To: James McDevitt, EFOCC Secretary, 1903 Village Road, West, Norwood, MA 02062-2524.

I enclose my check or money order for \$12 (\$25 U.S. funds if overseas) to cover renewal of my membership in the EFO Collectors' Club. I understand that my payment covers subscription to *The EFO Collector* at the rate of \$10 per year.

Name _____

Address _____

City _____ State _____

Country _____ Zip or Post Code _____

Life Membership Can Be Yours! —

A one-time payment of \$210 (United States and Canada) or \$440 (overseas) will make you a life member of the EFOCC. Never pay dues again! Be assured of the benefits of membership, including *The EFO Collector*, during your lifetime. To apply, complete and mail the coupon below to our Secretary, Jim McDevitt.

To: James McDevitt, EFOCC Secretary, 1903 Village Road, West, Norwood, MA 02062-2524.

This is my application for LIFE MEMBERSHIP in the EFO Collectors' Club. I enclose my check or money order for \$210 (\$440 U.S. funds, if overseas). I understand that my payment covers lifetime subscription to *The EFO Collector* at the nominal rate of \$10 per year.

Name _____

Address _____

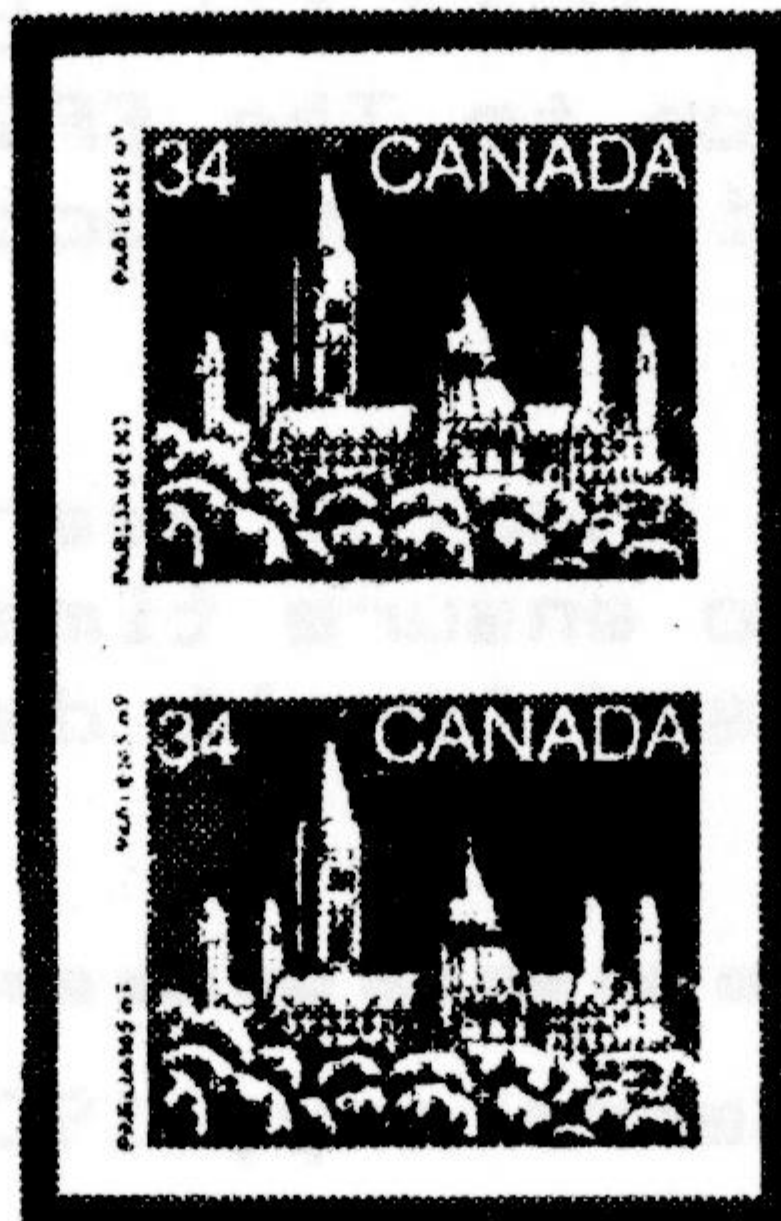
City _____ State _____

Country _____ Zip or Post Code _____

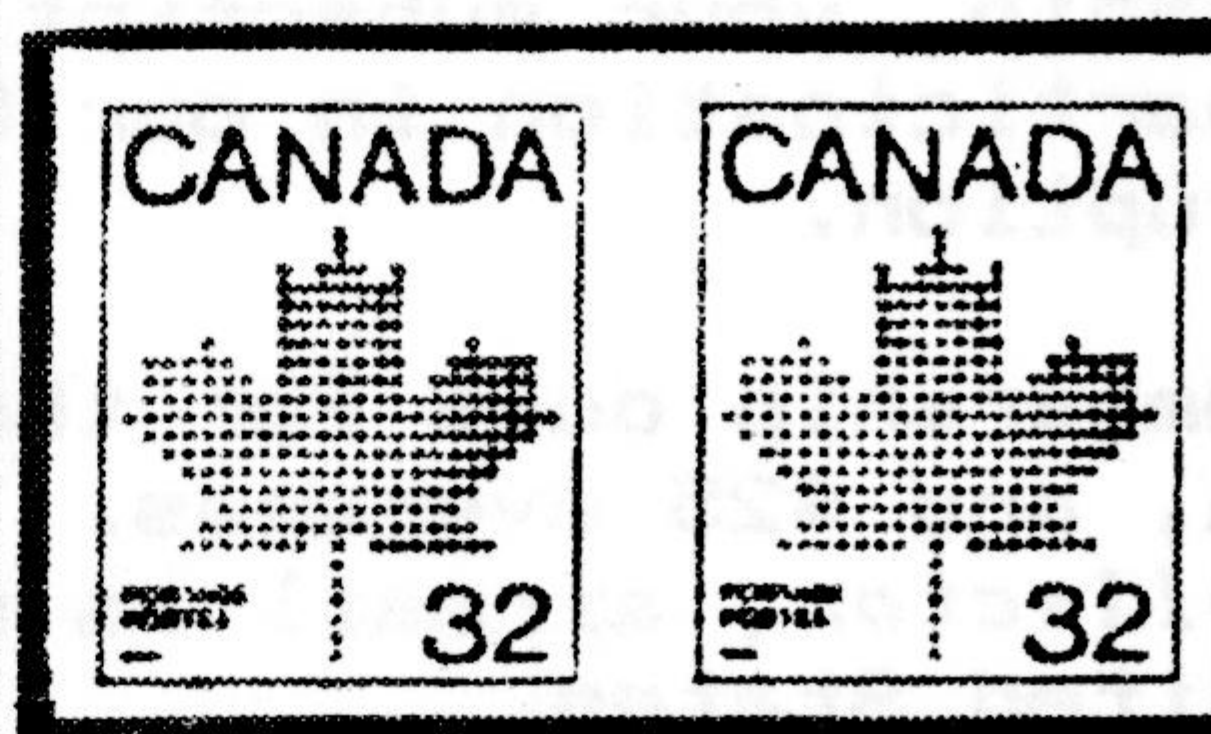
CANADA COIL IMPERFORATE ERRORS



806a Imperf. Pair, VFNH
Scott C.S. Cat. \$200
OUR PRICE: U.S. \$115



952a Imperf. Pair, VFNH
OUR PRICE: U.S. \$115



951a Imperf. Pair, VFNH
Scott C.S. Cat. \$200
OUR PRICE: U.S. \$150

SPECIAL....Our price for all three pairs:
ONLY U.S. \$299!

Strips of 4 are available pro-rata

Colour brochure and current price list of Canadian stamps featuring varieties and errors free on request



SASKATOON STAMP CENTRE

Call Us Toll-Free 1-800-667-6900
P.O. Box 1870, Saskatoon, SK, Canada S7K 3S2



ANYONE CAN OWN THE NORMAL!

#1057



Misperf Coil Pairs

\$ 7.50 per pair

All 3 for \$ 20.00



#1297



32115

Ag

POST OFFICE BOX 1
MEDFORD, N.J. 08055

(609) 654-7415

Auction #37-- Closing date: July 31, 1988

5% buyers' premium

UNITED STATES

A. PERFORATIONS

LOT#	SCOTT		MIN BID
1	65	Used pair with vert. misperf 3mm right.	8
2	68	Three (3) nice singels having major perf shifts to right and left with normal in middle.	100
3	213	Used single with double set of perfs at bottom (Nice star cancel).	5
4	498-99	Two (2) MNH singles with 25% perf shifts.	10
5	502	Mint HH OG block/4 with vert. perfs shifted 4mm into left of stamps. (Parts of stamps stuck to back). Cat 80	20
6	537	MNH margin strip/3 with plate #9415 having progressive shift of perfs from left to right into design.	22.50
7	634	Used single on commercial cover with 2mm shift.	5
8	742	MNH LL pane--UR corner with 6mm misperf and then miscut 5mm.	40
9	804	MNH corner pair with major vert. misperf left 6mm. EE bars inside left stamp.	15
10	820	MNH Plate block having left 2 rows of perfs shifted. Part of plate # inside stamp.	5
11	907	Used Plate block on commercial cover with hor. perf shift.	7.50
12	1021	MNH single with 4mm perf shift.	8
13	1022	MNH single with 7mm perf shift.	5
14	1035	MNH corner block/4 misperfed thru "Library".	7.50
15	1042	MNH margin block/4 w/ perf shift 3 1/2mm right.	10
16	1055	MNH coil single & pair w/ perf shift 6mm left.	6
17	1057	MNH coil pair w/ misperf 9mm right.	5
18	1107	Used single with 4mm perf shift down.	2
19	1141	MNH margin single with hor. perfs shifted up.	7.50
20	1201	MNH single with 3mm perf shift. (incl. normal).	6
21	1281	Two (2) misperfed singles. One with "3c" missing.	7.50
22	1281	MNH single misperfed 6mm left.	7
23	1282	MNH single misperfed 5mm down.	6
24	1282	MNH block/4 misperfed 4mm left.	12
25	1282	MNH margin block/4 misperfed 4mm left.	18
26	1283B	MNH gutter snipe single w/ 3mm of stamp above.	3
27	1286A	MNH single misperfed splitting denomination.	7.50
28	1290	MNH single. Perfect change-of-design, top margin copy with extra inscription.	15
29	1294	MNH single misperfed 2mm down.	2
30	1305E	MNH line strip/4 misperfed 5mm right.	10
31	1325	MNH coil pair misperfed 3mm right.	5
32	1325	MNH coil pair misperfed 8mm left.	5
33	1338	MNH single with 2-way misperf.	7.50
34	1394	MNH plate block with drastic 10mm perf shift with part of plate# missing.	50
35	1432	MNH margin block/4 with perfs shifted down 3mm.	12
36	1503	Two (2) MNH singles with vert/diag misperfs.	12
37	1509	MNH margin block/4 misperfed 5mm left. (Also shows Hock line).	7.50
38	1510	MNH margin block/4 with nice design change misperf.	12
39	1519	MNH coil strip/5 misperfed thru right flag & "T" of "States".	7.50
40	1520	MNH line strip/4 misperfed 7 1/2mm left.	10
41	1525	MNH single with major design change misperf.	10
42	1549	MNH 2-way misperf. Inscription missing at bottom and split denomination.	25
43	1563	MNH margin pair with perfect design change. Top margin is blank.	30
44	1618	MNH line strip/3 misperfed 8mm right.	7.50
45	1704	MNH margin block/4 misperfed 4-5mm right.	12
46	1726	MNH ME block/6. Nice 6mm hor. perf shift.	35
47	1818	MNH corner block/4 misperfed having full EE bars inside of stamps & shows part of adjoining pane.	30
48	1818	MNH block/4 with perfs on slight diagonal both ways.	15

49	1840-1	MNH margin pair misperf. Wrong legends at top.	30
50	1863	MNH block/4 with blind perfs between stamps. Very slight pin impressions.	20
51	1947	MNH coil strip/4 misperfed 8mm left.	10
52	1947	MNH line strip/5 misperfed 8 1/2mm left.	16
53	2011	MNH margin pair with 6mm perf shift up.	16
54	2011	MNH corner block/4 misperfed 6mm down.	30
55	2066	MNH margin block/4 with perfs on diagonal.	7.50
56	2072	MNH misperfed pair; "OVE L".	10
57	2112	MNH coil pair misperfed 5mm left.	5
58	2112	MNH coil strip/5 misperfed 2mm left.	2.50
59	2114	MNH block/4 misperfed up 4mm.	7.50
60	2144	MNH pair with perfs shifted up 9mm.	15
61	MIX	Eight (8) MNH misperfed singles. 3c & 8c era.	15
62	MIX	Ten (10) MNH major misperfs and color problems. Real nice group.	30
63	MIX	Ten (10) different MNH coil pair misperfs including two line pairs.	40
64	MIX	Eleven (11) MNH misperfs, miscuts, tagging ghosts, and color problems.	10
65	MIX	Eleven (11) MNH EFO's. Color & perf problems.	15
66	C83a	Mint LH imperf pair major error. Cat 100	40
67	C104a	MNH margin setenant block. Misperf splits "28c".	35
68	Ol30	MNH margin block/4 misperfed 5mm.	6
69	RB23a	Used imperf strip/4 with pen cancel and very rough (torn) edges on three sides. Cat 100	30

B. COLOR SHIFTS

MIN BID

70	294	Used VF single with ship shifted high 3mm and 2mm to the left.	7
71	834	Used single with vignette shifted to UR.	7.50
72	1118	MNH plate block/4 with blue shifted down. "8c" into "postage".	10
73	1206	MNH single with black shifted way up and right.	10
74	1206	MNH margin block/4 with black lamp shifted above flame.	7.50
75	1265	Five (5) MNH and one used single with black shifted up, down and all around.	6
76	1339	Used single with blue shifted 1 1/2mm left.	3
77	1339	SAME as above.	3
78	1324	MNH block/4 with blue shifted left 1mm.	2
79	1364	Two (2) plates (one LH) and single with slight yellow shift right.	2
80	1396	MNH pair with logo shifted left and gold lettering shifted right.	15
81	1426	MNH plate block/10 with black misregistered right. Entire design fuzzy.	6
82	1430a	MNH corner setenant block with litho colors shifted up 6mm. Unusual appearance.	15
83	1430	MNH margin block/4 with lettering shifted to left splitting "US".	6
84	1432	SAME in ME block/6.	15
85	1444	Used on cover with 1/2mm color shift. Blurry.	1
86	MIX	Five (5) MNH Olympic singles with various misregistered colors. 1460, 62, & C85. Nice.	25
87	1467a	MNH plate block/4 with litho color shifted 2 1/2mm.	15
88	1470	MNH plate block & block/4 with color shifts.	2
89	1473	MNH Zip block with color shift down and right.	4
90	1473	MNH plate block/4 with orange & blue shifted down. Ink smudge LL.	5
91	1473	MNH block/8 w/ slight progressive color shift.	7
92	1505	MNH single with black shifted left. "Slow Wagons."	10
93	1529	MNH single with engraved black shifted down and to the right.	12.50
94	1538-41	Two (2) MNH blocks/4 & single with engraved color shift down 1mm. (Includes normal copy).	3.50
95	1557	MNH single with nice 2-way intaglio shift.	15
96	1557	MNH margin single with red star shifted down 4mm into space craft.	7.50
97	1568a	MNH setenant block/4. Soldiers appear doubled due to misregistered colors.	5.50
98	1608	MNH corner block/6. Intaglio shifted up 7mm and flame below lamp.	25
99	1610a	MNH VF \$1 Rush lamp with intaglio brown inscription and candle holder omitted. Real nice. Cat 500	375

100	1763a	MNH Zip block with intaglio colors shifted 3mm left. Doubled owels.	30
101	1909a	MNH booklet pane single. Very hazy due to color misregistration.	40
102	1934	MNH single with central design shifted down.	7.50
103	2031	MNH pair with spectacular intaglio black color shift 5mm left.	20
104	2072	MNH plate block/20. Hearts shifted right and a bit diagonal.	15
105	2367	MNH block/4 with dark green background shifted down 1 1/2mm.	10
106	MIX	Eight (8) diff. MNH singles w/ minor shifts.	5
107	MIX	Fourteen (14) MNH, one NG singles with minor color shifts, misperfs, lt print, etc.	20
108	CE2	MNH PB/4 with blue vignette shifted right.	20
109	J89	MNH PB/4 with "1 cent" shifted right & down.	15
110	J89	SAME in block/6.	12

C. INKING

MIN BID

111	65type	Mint LH green trial color proofs with major wiping smears.	110
112	279B	Mint HR OG 2c Washington (1898) printing freak. Part of design missing because of foldover or foreign object. Repaired tear.	20
113	807-11	Mint DG OG 3c & 6c Prexys with light print. Almost unrecognizable.	5
114	815	MNH corner block/4 with very heavy overink.	15
115	MIX	Three (3) MNH dry light prints; 815 single, 1035 corner block, C51 plate block.	10
116	MIX	Five (5) MNH singles with wet printing.	7.50
117	944	MNH vert. strip/10. Top stamp underinked progressing to overinked toward bottom.	40
118	951	MNH single with moderate overinking smear.	5
119	1035	Used VF block/10. "Superior" mis-spelled in pre-cancel.	8
120	1035	MNH corner block/4 with extreme dry printing.	20
121	1035	MNH left stamp dry print to normal at right.	7.50
122	1278	MNH block/16 with wiping roller smear down 2nd column of stamps.	5
123	1338D	MNH single with right hand edge of flag pole, halyard and top of monument missing.	6
124	1338G	MNH series of 6 line pairs having 7% to 33% of blue line.	15
125	1361/73	MNH plate block with tiny ink streak and Zip block with extra long bell rope.	3
126	1483b	FDC (Art Craft) with setenant dark blue litho disappearing. (Includes normal copy)	15
127	1510	MNH corner block/6 with wavy wiping roller line of smeared ink at right.	10
128	1546a	MNH setenant block & two singles with slight bleed of colors.	2
129	MIX	MNH 1596 block/4 and 2064 block/9 w/ splatters.	7.50
130	1597	MNH VF full sheet/100. 15c flag with blue bleed from star field into red stripe below on about 60 stamps.	30
131	1894	Mint NG single with offset printing on face. Additional faint red stripes.	3.50
132	2059-62	MNH setenant block with excessive ink changing the blue & green to diff. shades. (BEP letter)	14
133	2115	MNH strip/4. Right 1 1/2mm blue field in red and right 3mm of stripes are dark.	20
134	2244-5	MNH XF. Ink smudges on block/6 and PB/10.	10
135	2259	MNH coil pair with missing color streak thru center of 10c on both stamps.	4
136	MIX	Five (5) wet print singles. 2c and 3c era.	7.50
137	MIX	MNH USPS definitive mint set (Kit A) with 1594 and 1816 having inking defects. \$8 face.	12.50
138	MIX	SAME as above	12.50
139	C32	MNH block/14 with progressive overinking bottom to top.	20
140	U429	Mint entire with overinked print and strong offset inside envelope. (soiled front)	2.50
141	U423	Mint entire; Albino on blue paper.	6
142	W57	MNH block/8 w/ normal to wet print. (some weak perfs).	12

D. TRIMMING

143	720	Used single. Oversized with 3mm of adjacent stamp. (thins--SE).	1
144	1057	MNH miscut coil line strip/3 showing partial plate #'s.	5
145	1057	SAME as above.	5
146	1057	MNH PO fresh miscut line strip/5 with 45% plate #25710 and missing perf on line.	5
147	1057	Two (2) MNH PO fresh matching miscut coil line strips/5 showing 85% plate #25410.	10
148	1059A	MNH coil line pair miscut showing 45% plate #30768-30767.	7.50
149	1283B	MNH block/4 with full vert gutter and 4mm of adjoining pane; small very light stain on back.	20
150	1297	FDC (Art Craft) with left line pair showing 15% of plate #'s.	5
151	1299	MNH miscut line pair showing 25% of plate #.	3
152	1402	Two (2) MNH miscut coil line strips/4 with plate #33890 and 24052 and reverse.	10
153	1898A	Two (2) MNH miscut PN-5's with only part of plate # at bottom----#3 and #4.	2
154	1903a	MNH precancel coil pair miscut 6mm and pre-cancel lines shifted up.	20
155	1903a	On a #10 commercial cover--miscut 4mm low.	7.50
156	1903a	Two nice MNH PN-5's with split plate #5 & #6.	16
157	1903a	SAME as above.	16
158	2124a	MNH miscut PN-6 with split plate #1 Gap 2R.	2
158A	2124a	SAME as above.	2
159	2134	MNH miscut PN-5 with split plate #2.	1.50
160	MIX	Five (5) diff. miscut coil line pairs with partial plate #'s.	5
161	MIX	Five (5) slightly misperfed PN-5's; 1898 #1 and #2, 1898A #5 and #6, 1906a #3.	4
162	U311	Mint miscut entire; 80% of print on reverse; balance trimmed during cut. Soil and writing on front.	10

E. BOOKLET PANES

MIN BID

163	804b	MNH miscut booklet pane w/ 30% UL #22977.	2
164	806b	MNH miscut booklet pane w/ 60% UL #22011.	4
165	806b	MNH miscut booklet pane w/ 35% LL #22012. (Part of next pane shows at top).	8
166	807a	Used on cover miscut pane with interesting "Supposedly found in empty equipment" marking.	15
167	1036a	MNH miscut pane w/ 80% LL #26953 plus EE bars. Includes single and a half from another pane.	3.50
168	1213a	Four (4) miscut panes with slogan 2.	20
169	1278a	Two miscut panes. One shows next pane at top; other at bottom.	5
170	1280c	MNH miscut pane w/ 70% UL #32967 shows tips of EE bars.	5
171	1280c	MNH miscut pane w/ full EE bars & 4mm beyond.	20
172	1284b	Two MNH miscut panes. One with hor. EE bars.	7
173	MIX	Four (4) miscut panes; 1284b & c, 1510c, 1395b.	20
174	C39	MNH pane miscut 9-10mm low.	20

F. PAPER

MIN BID

175	65	Single on cover w/ nice paper crease thru stamp.	25
176	804	MNH pair with double paper on bottom & 1/2 top.	10
177	807	Mint HR double paper block/6 with tape across bottom stamps.	17.50
178	905	Mint HR double paper margin block/8. Double middle 4 stamps w/ red rejection line and tape across 2nd row of stamps.	20

G. MISC.

179	A88type	Used single with chemical changed color? Orange/red & violet---Unusual.	5
180	295	Used single with double transfer LR frame line.	10
181	332	Used single with strong double transfer below top frame line.	7.50
182	442	Mint NH paste-up coil pair.	15
183	2349	MNH corner block/4 with tagging shift to right 6mm. Interpane gutter blank into left vert. row.	5

AUCTION # 35 PRICES REALIZED

FOREIGN

184 — BELGIUM?—Six (6) 19th century color wax seals
intact on portions of envelope. 10
185 54 S. AUSTRALIA—Used single misperfed 2+mm. 5
186 191 FIUME—Mint H OG large stamp with 5mm misperf. 2

DONATION LOTS

D1 MIX Three (3) nice misperfed coil pairs; 1947 (5mm),
1304 (4 1/2mm), 1904a (50%). 18
D2 MIX Six (6) diff. EFO's with ink & perf problems. 5.50
D3 MIX Seven (7) diff. EFO's with ink & perf problems. 6.50

AUCTION NOTE: All of the above lots are represented by a photo.
Special thanks to the following members for their
contributions and donations; Ed Silver #14,
Vince Kovaluskie #636 and Mary Mitchell #640.

GOOD LUCK——JOE.

AUCTION #35 ANALYSIS

Number of lots———216.
Number sold———161.
Number of bidders———58.
Successful bidders———44.
Most popular lots—#40, 43, 58, 201 & 212.

LOT#	BID	LOT#	BID	LOT#	BID	LOT#	BID	LOT#	BID
1	20	47	9	84	8	127	16	175	18.50
2	20	48	13	85	77.50	128	16	176	18
3	97.50	49	12	86	9	129	18	177	25
4	31	50	15	87	22	130	32	179	8.50
5	26	51	16	88	32.50	133	20	180	6
6	117.50	53	28	89	52.50	135	3	183	20
8	6.50	54	4	90	72.50	136	7	184	9.50
10	6	55	12	91	20	140	2.50	185	10
11	5	56	11	92	11.50	141	5	188	4
12	36	57	13.50	93	4	143	15	189	6
16	20	58	7	94	4	145	77.50	190	6
17	8	59	8	97	4.50	146	30	191	4
18	12.50	60	11.50	98	15	147	22	192	5
21	10	61	12	99	10.50	149	44	193	6
23	25	62	10	102	12.50	150	5	194	8
25	3.50	64	50	104	2.50	151	5	195	24
26	8	65	11	107	12	154	18	196	7.50
29	18.50	66	14.50	108	16	156	4	197	28
31	26	68	16	109	15.50	158	8	198	23
32	15.50	69	18	110	14	159	8	199	18
33	20	70	8	111	21	160	17.50	200	30
35	26	71	20	112	11	161	3	201	46
36	16	72	46	114	20	162	9	202	10
37	20	73	18	117	16	163	20	203	32.50
38	21	74	42	118	7.50	164	12.50	204	15.50
39	11	75	18	119	10	166	20	205	14
40	30	76	23	121	28	167	36	206	12
41	24	77	4	122	9	168	20	208	37.50
42	8	79	80	123	15.50	171	9	209	18
43	36	80	8.50	124	15.50	172	23	210	5
44	6	81	8	125	15.50	173	20	212	26
45	8	83	25	126	15	174	6	215	17
								216	8

Acceptable Abbreviations and What They Mean--

CENTERING

AVE - Perforations cut design
F - Fine, perfs clear of design
VF - Very fine, well centered with
opposite sides nearly equal
XF - Extremely Fine, perfect center-
ing on all sides

GUM

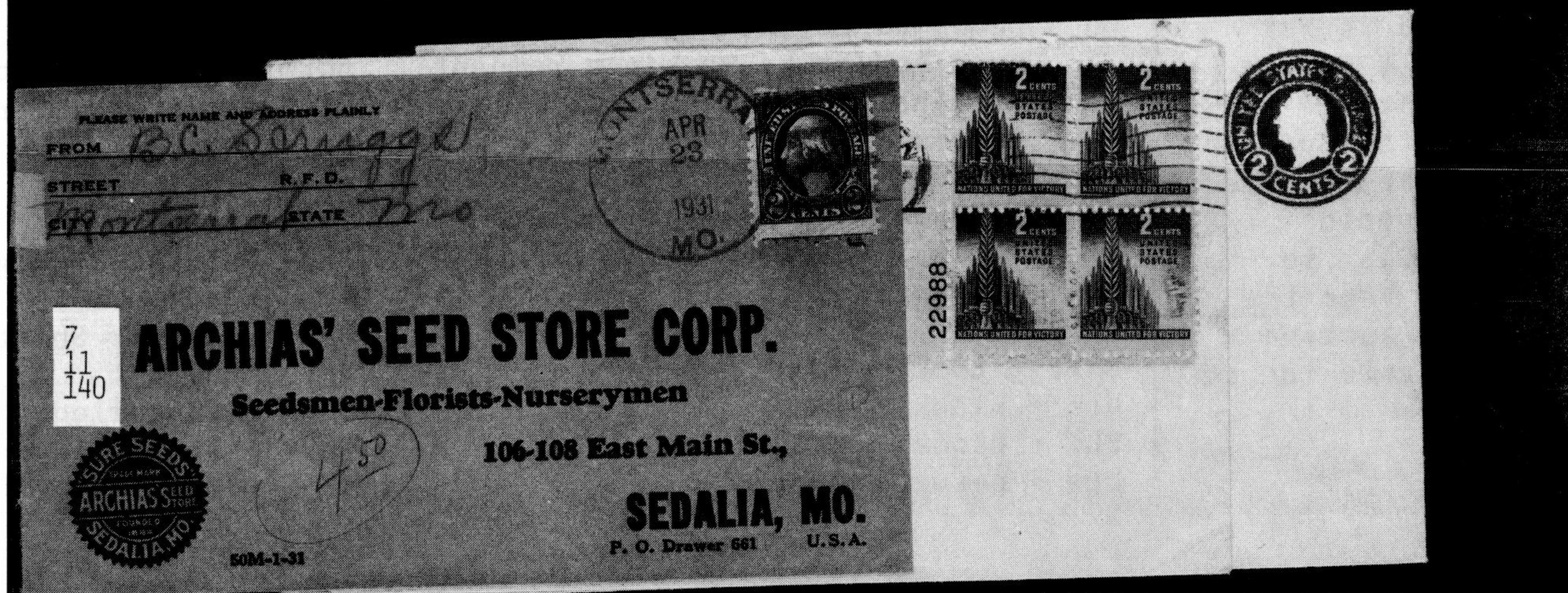
NH - Never Hinged
LH - Light Hinge Mark
H - Hinged, some gum loss
HR - Hinge remnants, some pieces
adhere to stamp
HH - Heavy Hinge, much gum disturb-
ance and/or heavy hinge remnant
OG - Original Gum
RG - Regummed
NG - No Gum
NG as issued - no gum on stamps,
issued without gum
NP - No Photo
@ - at
Bklt - Booklet
blk - black
BLK - Block
btw - between

cat. - catalog value
chng - change
DBL - double
dn - down
EST - Estimate of value
horz - horizontal
imp - imperforate
lf - left
litho - lithographic
printing
M - Mint, uncanceled
MB - Minimum Bid, lowest
price at which lot
will be sold
mm - millimeter
norm cpy - normal copy
Pl # - Plate Number
pr - pair
prnt - printers
rt - right
SE - Natural Straight
Edge
SS - Souvenir Sheet
Shf - Shift
Used - Canceled
Vert - Vertical
w/ - with

Bidding Increments

Bidding Area	Raise
\$ 1.00 - 9.50	.50
10.00 - 49.00	1.00
50.00 - 97.50	2.50
100.00 - 495.00	5.00
500.00 +	10.00

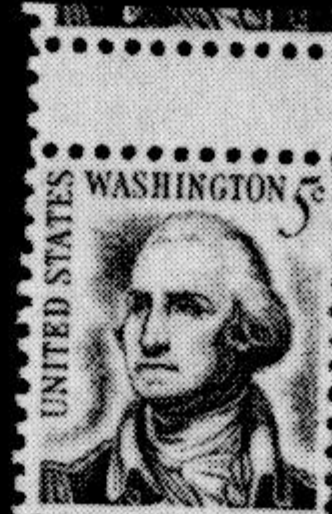
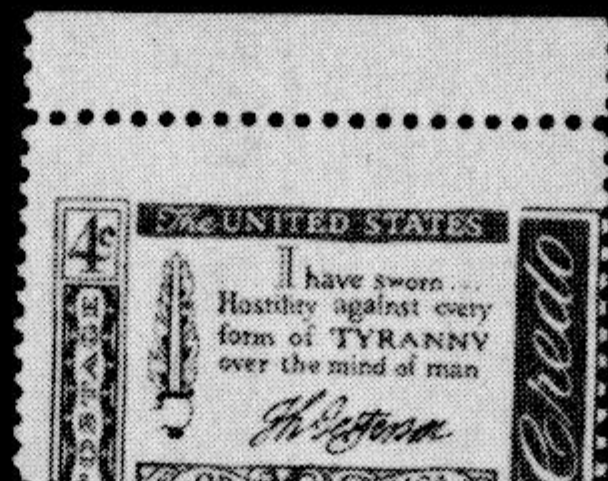
Irregular bids will be reduced to the next lower level. Each lot will be sold to the highest bidder at one increment over the second highest bid unless the minimum bid is not reached. Any bid not in good faith, in the estimation of the Auction Director, may be rejected. The Auction Director reserves the right to remove any lot from the sale. A set of auction rules is available for an SASE.



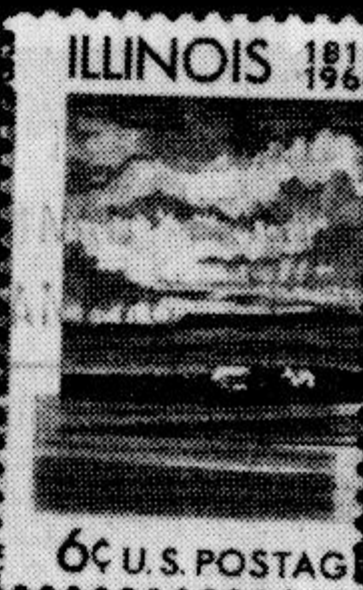
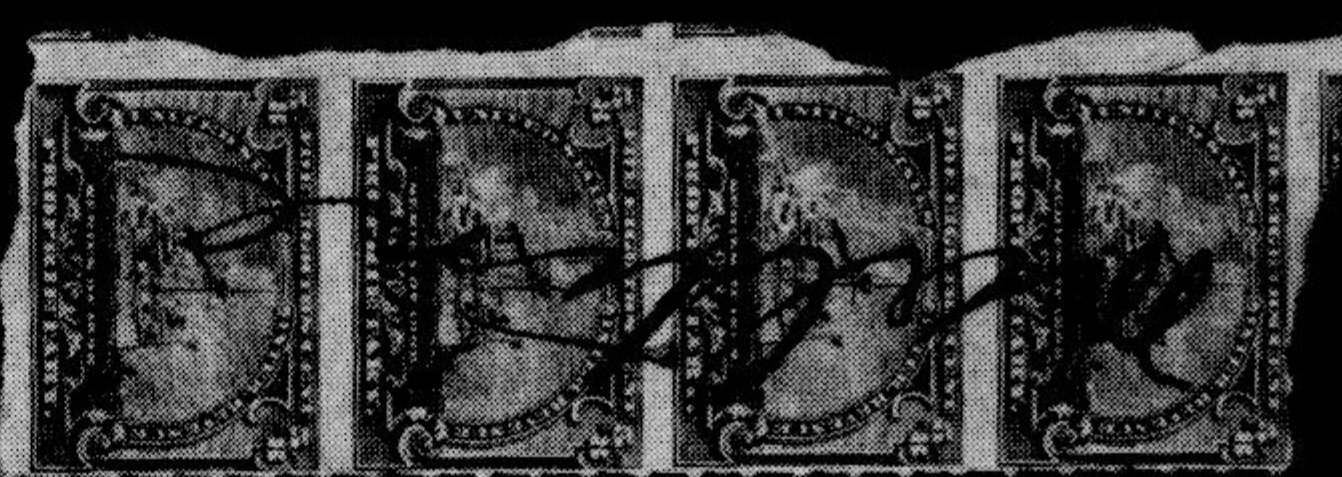
29
19
26
65



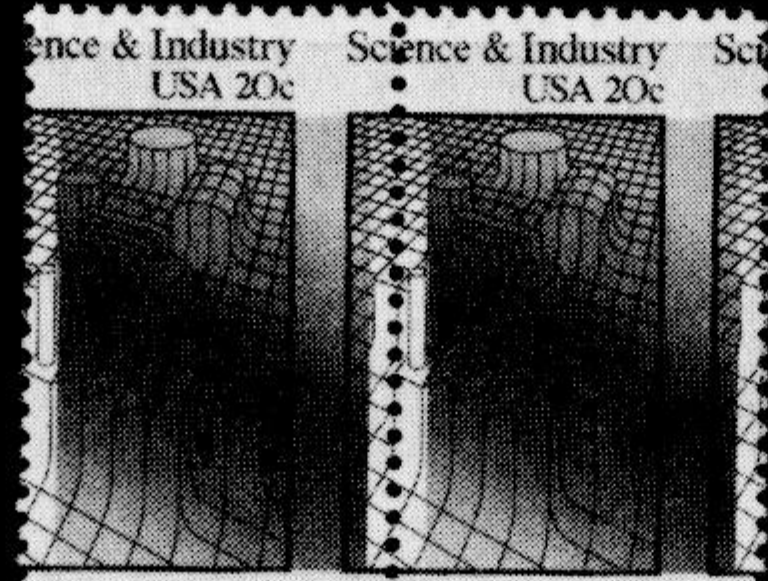
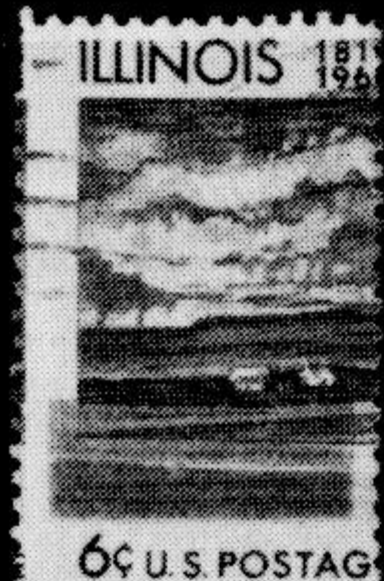
USA - 1861



65
65
69
76



77
96
103
106
106
106



107
107
107
136
136
136
143



49
151
152



152
153
154



156 &
157



82
84



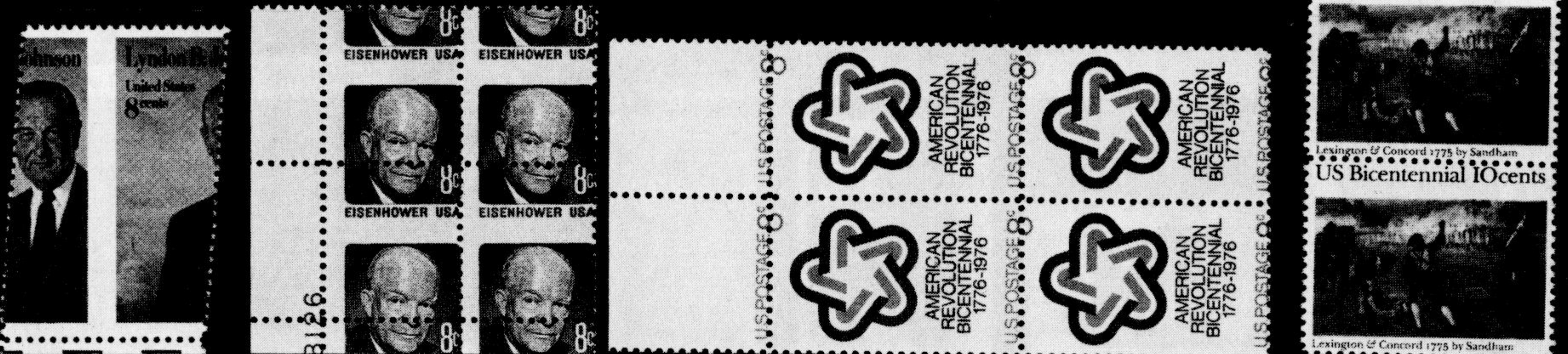
56815



1014242536



36343543



3738474853

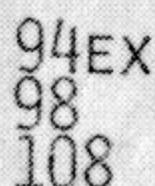


505455

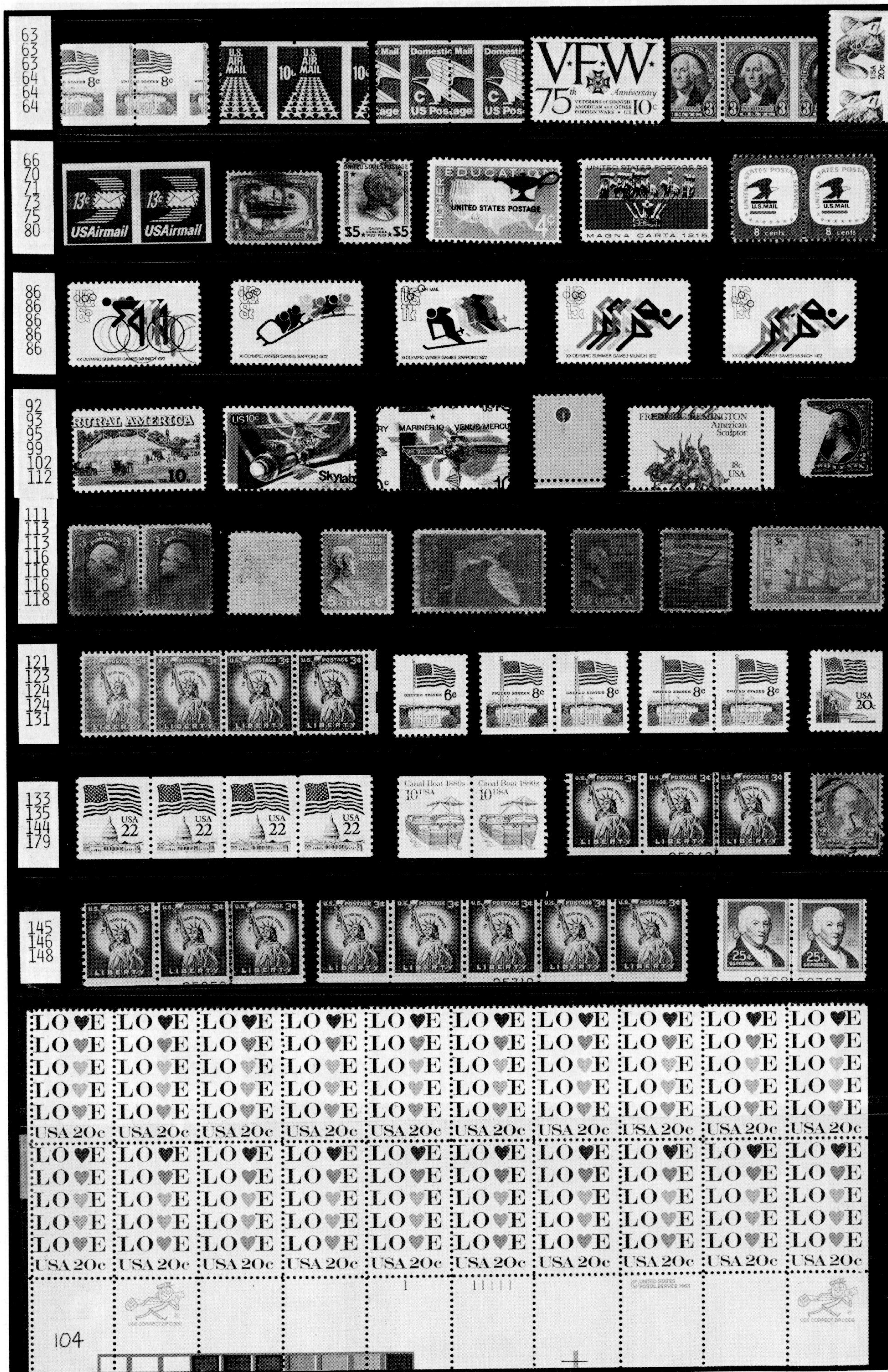


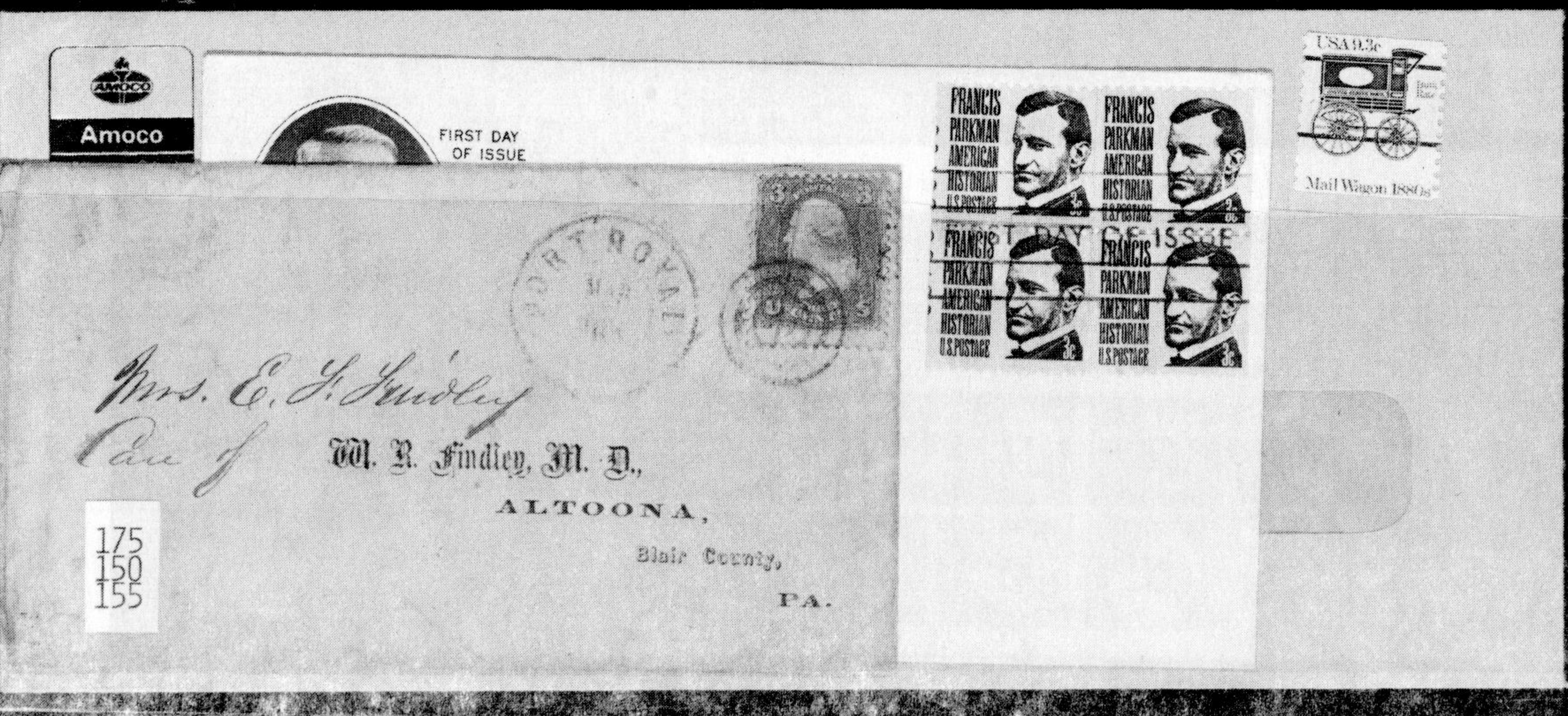
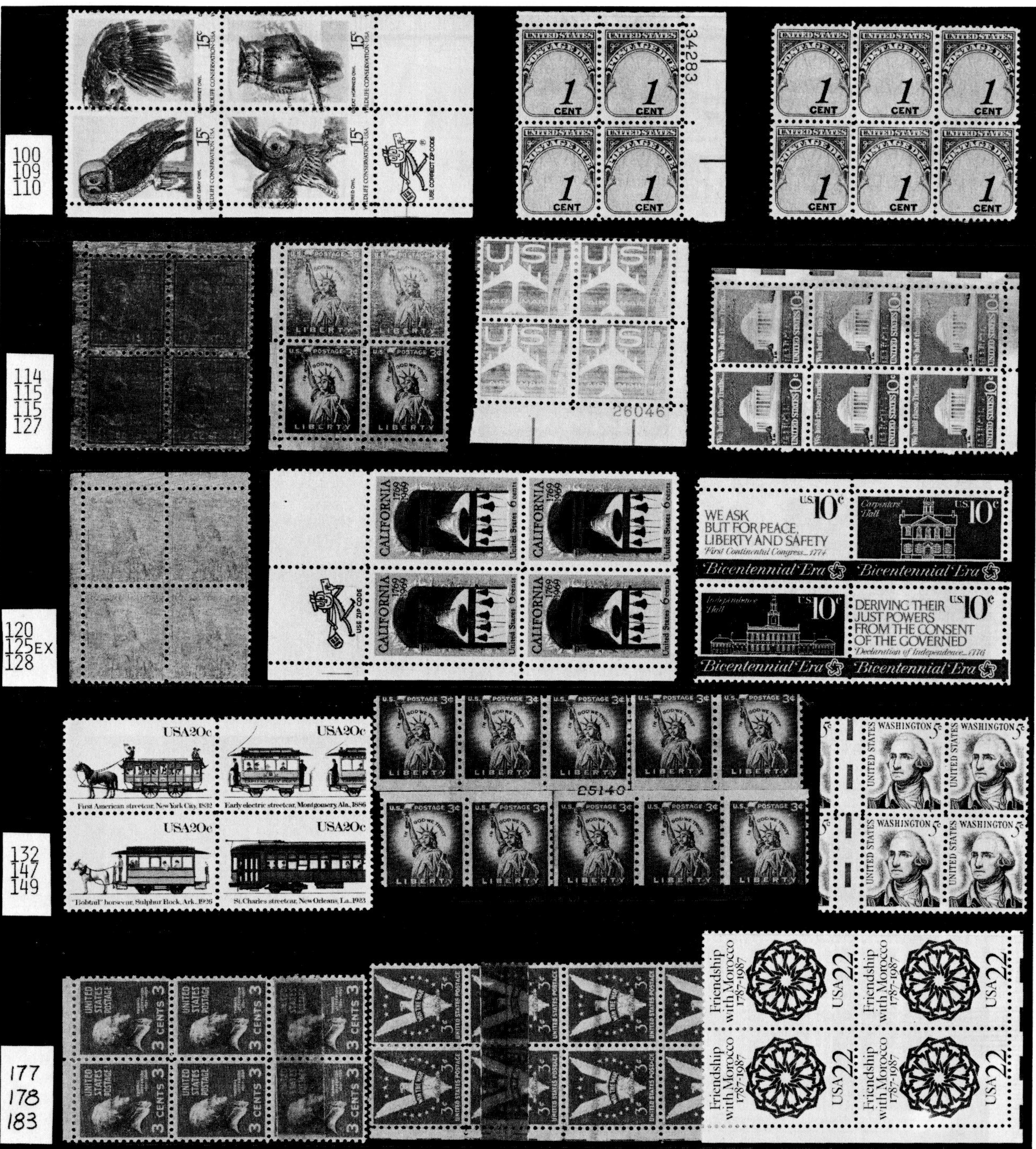
8791

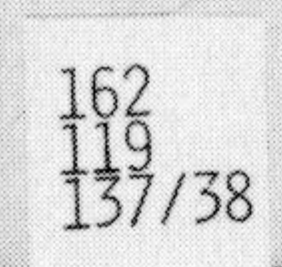




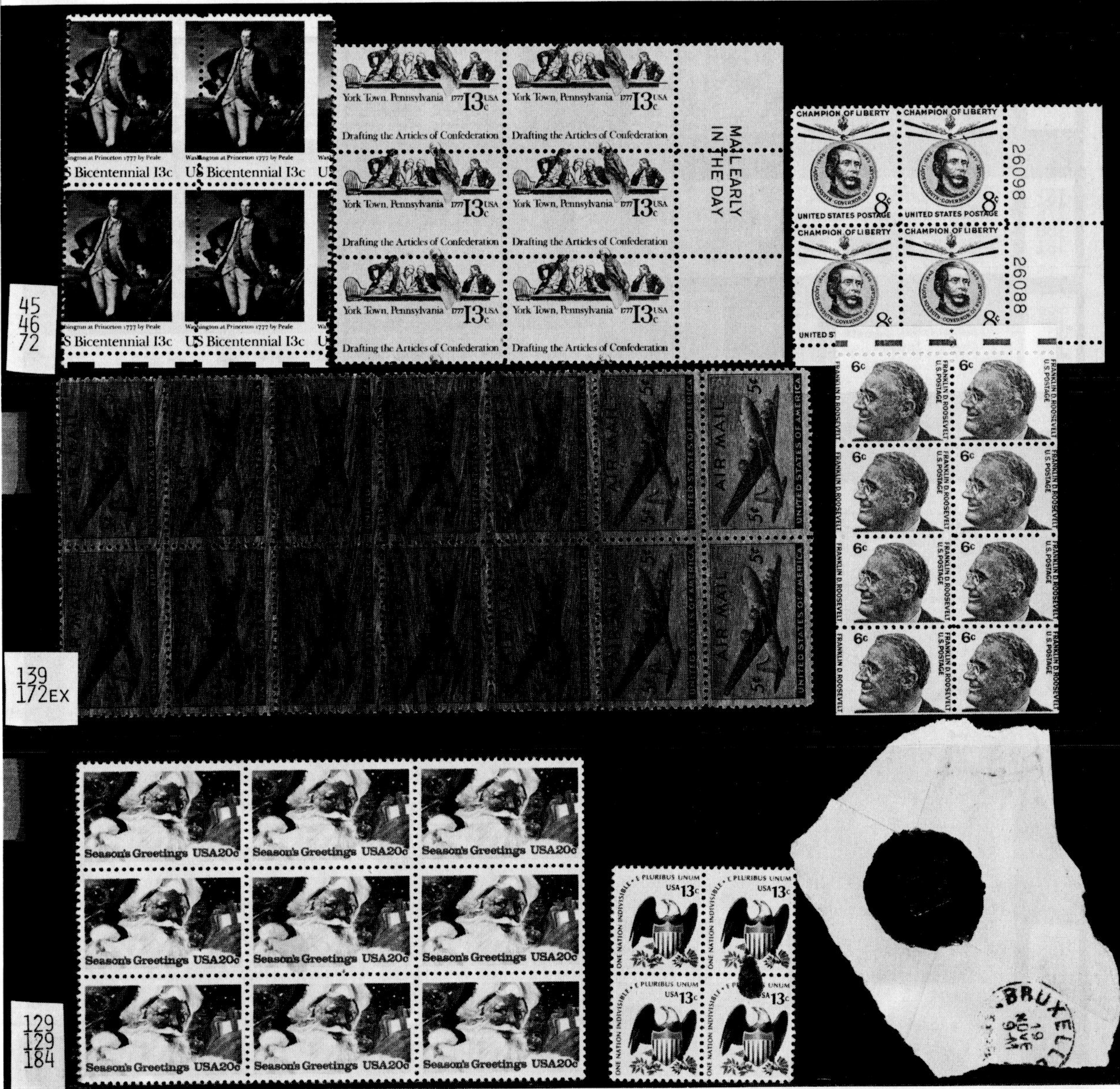
21493











EFOCC
AUCTION
BID
SHEET

Name _____

EFOCC No. _____

Home
Address _____Home Area & Number
Phone _____

City _____

State _____

Closing
date:Send by Insured Mail? All postage
costs will be billed to the bidder. _____OFFICE
USE ONLY

July 31, 1988

5% buyer's premium
will be added to
your winning bid.Please execute the following bids for me
in this mail auction. (All bid sheets
must be signed.)

Signature: _____

Bids of bidders
with purchase
limits will be
executed in the
order in which they
list their lots.Send completed bid
sheets to--EFOCC Auctions
209 East 11th Ave.
Conshohocken, PA
19428

Lot #	Bid	Lot #	Bid	Lot #	Bid	Lot #	Bid	Lot #	Bid

CHECK YOUR BIDS CAREFULLY!

Please limit my purchases to \$ _____ (Limits less than \$25
respectfully declined.)

Consignor Name

Description of EFO

Country

Cat. #

Lot #

EFOCC #

Catalog Used (If
other than Scott)

Condition (circle)

NH OG
LH RG
H NG
HR NG as issued
HH Used

Centering (if applicable)

XF
VF
F

Average

Faults (Beyond EFO properties)

Describe:

INSTRUCTIONS:

Fill in all boxes with underlined
headings. Leave the others blank.
Then mount your lot here. For covers,
multiples, or other lots, use the
reverse side of the form or another
sheet of paper or cardboard (better).
Be sure to include this form if the lot
is mounted separately (attach it to
the lot, if possible).

Send your lots by registered or insured
mail for your protection.

Extra forms are available for 4¢ each
and a SASE. 10 for 1 oz., 20 for 2 oz.

Sale #

Buyer #

Hammer

Cat. Value

Retail Est.
and Source

Minimum Bid

EFOCC Auctions, J. A. Licata, 209 E. 11th Ave., Conshohocken, PA 19423

For Auctioneer's Use

Election Chairman's Report--

Elected to Errors, Freaks and Oddities
Collectors' Club offices for the
1988-1990 term beginning July 1, 1988,
are--

President: Lou Repeta
Vice President: Scott Shaulis
Treasurer: Phil Nazak
Secretary: Jim McDevitt
Director at Large: Mary McIndoo

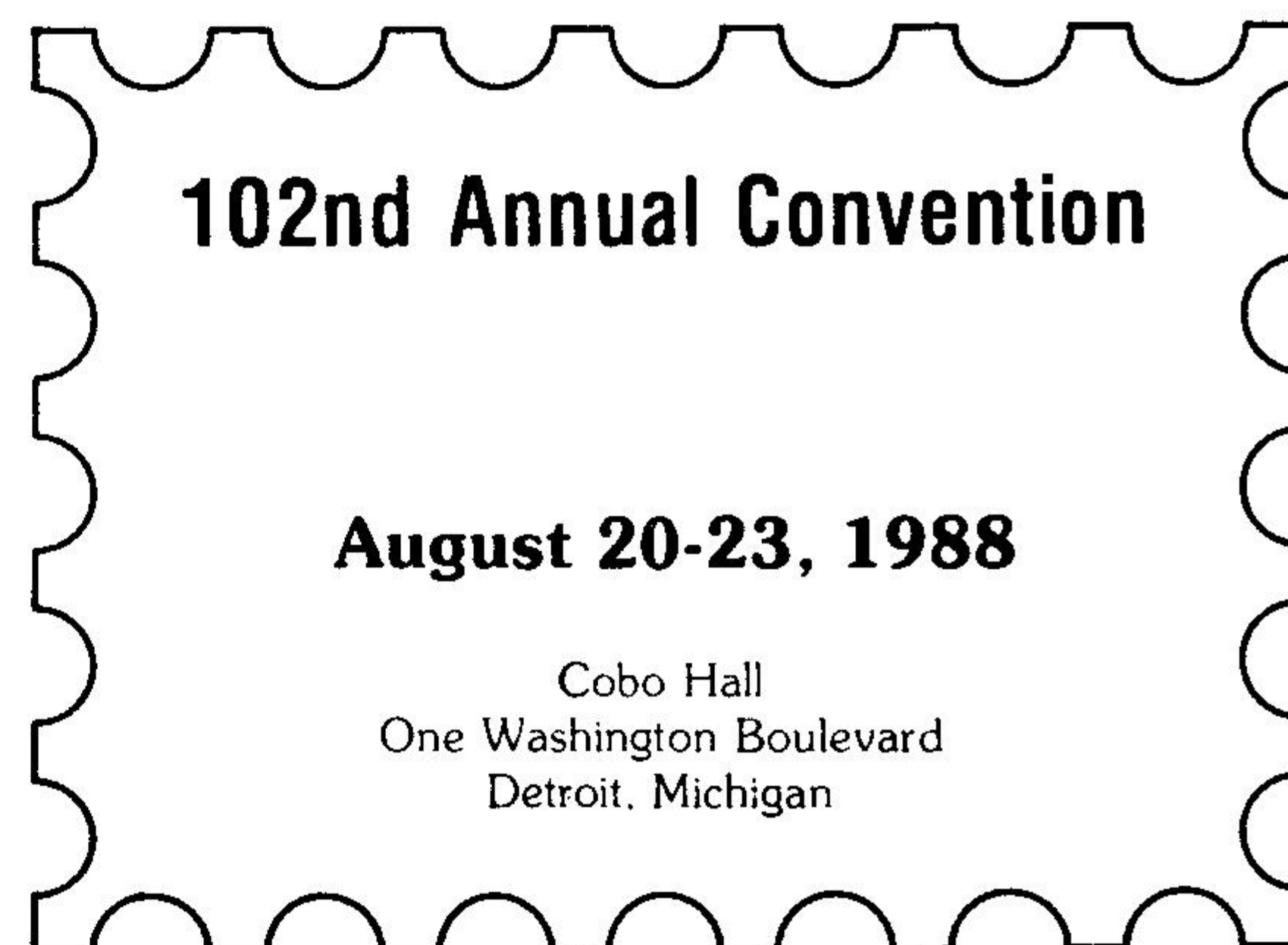
Each person received all of the
nineteen votes cast except Mary
McIndoo, who received eighteen; one
write-in vote for Director at Large was
cast for Jim Harkleroad.

Congratulations to all!

--John M. Hotchner

The APS's Own EFO--

Don't believe the dates shown below!
This "EFO" was clipped from a slick
brochure published by the American
Philatelic Society to publicize
STaMpsHOW. The true dates for the event
are August 25-28, 1988. See you there.



(Note: border added)

J.E. McDevitt, 1903 Village Rd.,
Norwood, MA 02062-2524

BULK RATE U.S. POSTAGE PAID WOODBIDGE, VA PERMIT NO. 70
--

This is the bimonthly journal
of the EFO Collectors' Club.
PLEASE EXPEDITE.