

THE EFO COLLECTOR

A Publication of the EFO Collectors Club

APS Affiliate # 103

ATA Chapter # 94

Volume XXII - No. 5 {Whole Number 129}

Oct-Dec, 2002



ISSN 1099-7377

TUITION ASSISTANCE

Stan Goldfarb's most interesting experience in EFOs was finding a unique missing color. He used to buy many thousands of dollars in discount postage. At the time, it cost him 80% of face. He would stick any stamp he didn't have a quantity of in albums to have "normals" for his "errors".

One day, he noticed one of his 15 cent Mt. McKinley's looked different. At first, he just noticed it had a small color shift but something else was odd. He took it out and simply set it aside. It was several months later that he realized it looked as though it was missing the yellow also. Over the next couple of years (that's right – he said years) he showed it to a number of well known names in philately (whose names will not be mentioned since none of them thought it was missing the yellow - scary isn't it). he finally sent it to get a PF certificate. It took almost a year to get the cert (he would really like to tell you why he thought it took so long – let's just say politics).

He sent it in to Linn's and they put it on the front page with a color photo. They really did a good job on the article.

A few years later, with his daughter in college, he decided the money would be better than the stamp. He put it up in an auction where it realized \$5,750.00. Thus and for a 12 cent initial cost, a sizable tuition assistance sum became available.



**Join America's Premier Stamp
Collectors' Society**

-- contact --

**The American Philatelic Society
P. O. Box 8000,
State College, PA 16803
Tel: 814-237-3803
www.stamps.org**

Inside This Edition

Page

Tuition Assistance	1
Jacques Schiff, Jr. Information	2
EFOCC President's Report	3
Award Palmares	3
Datz Catalog Information	4
EFOCC Member's Post	5
EFOCC 2003 Dues Reminder	5 & 7
EFOCC Advertising Rates	6
EFOCC Officer Listing	6
Keep an Eye Out For	7
Auction #94 Auction Results	8-9
Auction Director's Comments	9
Auction Consignment Info	10
Auction #95 Bidder's Information	11
Auction #95 Lots	12-19
Auction #95 Lot Photos	20-30
This 'N That	31
EFO Buyer/Seller Listing	32
Collect Defensively	33
EFOCC Awards & Committee List	34
Auction Consignment/Bid Forms	35

"To Err is Human – To Find is Divine"

SCHIFF AUCTIONS

ARE AS EASY AS 1-2-3

SELLING STAMPS, COVERS & COLLECTIONS

1

We sell United States & Worldwide stamps and covers in each auction. Our consignors and buyers pay only a 10% commission. Lesser valued items can be combined to meet our minimum requirements. We will provide personal assistance and guidance. Your inquiries are invited. Personal pick-up by a bonded Schiff employee can be arranged for consignments of exceptional value. Please contact us before sending your consignment.

WE ALSO PURCHASE OUTRIGHT

What You Can Expect From Schiff Auctions

2

1. **YOUR COLLECTION** will be carefully examined, lotted and accurately described by our professionals.
2. **OUR WORLDWIDE CLIENTELE** developed over 55 years, will competitively bid for your stamps and covers.
3. **YOU CAN SELL** the auction dates best suited for your consignment. Our guidance will assist you.
4. **OUR EXTENSIVE ADVERTISING** in philatelic publications throughout the U.S., Europe & Asia will lure buyers for your properties.
5. **WE PROVIDE INSURANCE** by Lloyds of London as soon as your collection is delivered to us, or our bonded employee.
6. **WE PERSONALLY DISCUSS** your collection with you to advise how you can achieve the most financially rewarding results.
7. **OUR LOW COMPETITIVE COMMISSION RATES** makes us partners to secure the best results.

OVER 55 YEARS SERVING STAMP COLLECTORS
CONTACT US BY MAIL TELEPHONE OR FAX BEFORE SENDING STAMPS & COVERS.

3

Auction Catalogs	N. America Address	Overseas Address
1 year with Prices Realized	\$10.00	18.00
Year, Catalogs Only	7.50	15.00
Next Catalog with prices realized	1.50	2.50
Next Auction Catalog only	1.00	2.00

Pick up your catalog at our office without charge.

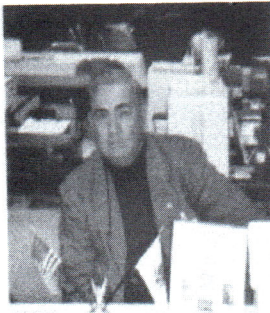
BID BY MAIL, FAX, TELEPHONE OR IN PERSON.

JACQUES C. SCHIFF, JR., INC.

195 Main St., Ridgefield Park, NJ 07660 USA
Telephone: 201-641-5566 From NYC 662-2777
FAX: 201-641-5705
Licensed & Bonded Auctioneers, Est. 1947

AUCTION # 291

**January, 2003
Knights of Columbus Hall
Ridgefield Park, NJ
Now accepting consignments**



PRESIDENT'S REPORT

STAMPSHOW 2002 was a success for our club. Attending an EFOCC business meeting on August were Jerome Kasper, Herb Freese, EFOCC Secretary Stan Rough, EFOCC Treasurer Dave Hunt and yours truly.

Jerome gave an extremely informative talk on varieties of Guyana postal stationery.

Also, two past members returned to the EFOCC fold—Steve Crippe and John Jamieson of the Canadian Saskatoon Stamp Centre.

Well attended seminars on EFO collecting were conducted on Saturday and Friday of the show.

At the Affiliate/Club representative's luncheon, a door prize of a year's free dues was won by T. P. McDermott of White Plains, New York.

MEA CULPA! With my lung surgery, getting the children ready for Georgia's August school starting date and preparing for STAMPSHOW 2002 — I apologize for failing to use an updated set mail labels for the summer edition of the EFO Collector.

REMINDER—please mark your calendar to note the American Philatelic Society's winter show AmeriStamp Expo 2003 will be held February 28 to March 2, 2003, Gulf Coast Convention Center, Biloxi, Mississippi.

Kudos to Pete Rikard for his preparing EFOCC Auction #95, containing 311 fine offerings. Also thanks and appreciation to EFOCC Secretary Stan Rough for his on-going efforts to bring lapsed EFOCC members back into the Club.

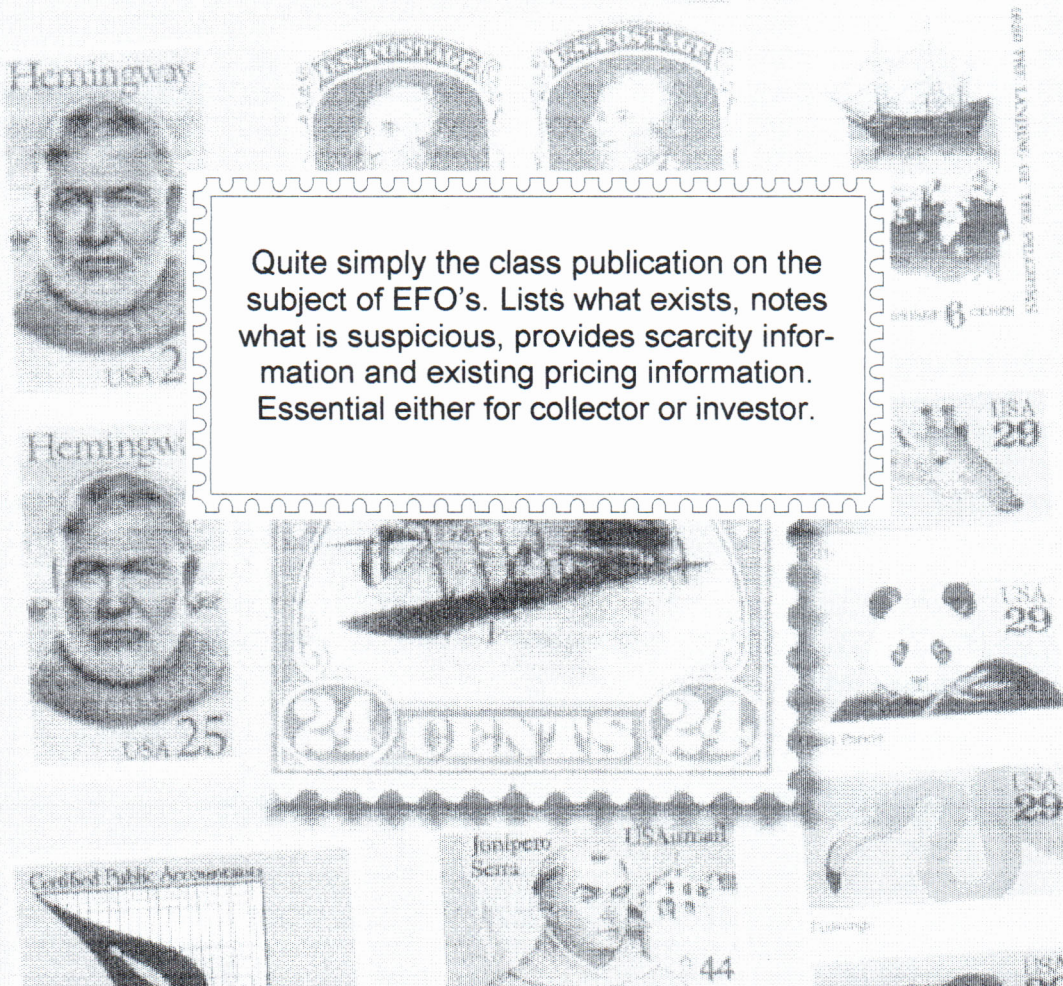
I and the officers of the EFOCC wish you and yours the very, very best for this holiday season and the coming new year.

Palmares

Peach State 2002 Stamp Show

Charles J. O'Brien garnered the American Philatelic Society post 1980 Award and a Gold medal for his Joint Issues With the U.S. 1959-1994. Also, the John Kovalski Memorial Award for best presentation (by Cobb County).

2002 CATALOGUE OF **ERRORS** ON U.S. POSTAGE STAMPS



Quite simply the class publication on the subject of EFO's. Lists what exists, notes what is suspicious, provides scarcity information and existing pricing information. Essential either for collector or investor.

\$14.95 plus \$3.25 P&H from: Krause Publications
700 E. State Street, Iola, WI 54990-0001
(800) 258-0929

EFOCC MEMBER POST

**Members are reminded—you are entitled to three (free)
Member post insertions per fiscal year**

538a and 540a Plate # Blocks & Sheets for sale or trade! I need plate #s of 498a, 498b, 499a, 501c, R168a, and other early imperf errors.— **Stan Wittig**, Box 2742, Springfield, MO 65801

ERROR LIST! Twenty page illustrated US major and minor error list showing over 350 different errors. SASE with 55 cents postage. For specific topics, please enclose a SASE for request —**Stan Goldfarb**, 8520 Atwell Road, Potomac, MD 20854

Money Back Guarantee Consider collecting foreign EFO's! You will find them extremely interesting. For 7 assorted foreign EFO's, send \$ 99. If not satisfied, please return them within 15 days and your \$99 will be immediately refunded. — **H. Frank**, P. O. Box 340868, Brooklyn, NY 11234

WANTED!! Unusual MDI booklets (blue cover vending booklets of fifteen or thirty 32c or 33c stamps). Also seeking flag EFO's, eighteen cents and up. Color shifts, color contaminations, dry printings, miscuts, etc. Also, flag/porch 2915A and 2915C coil with 11 teeth along right side and plate #66666, mint or used.—**Doug Iams**, P. O. Box 7651, Santa Rosa, CA 95407

The Disinfected Mail Study Group, APS affiliate seeks information from EFOCC members who might have any information of methods used to counteract anthrax contamination of mail. Also, cachets to explain delays or changes to paper of treated letters would be appreciated for illustration in their research magazine Pratique.

Please contact Mr. Denis Vandervelde at Vdpartique@aol.com

Reminder!!!

Time to renew membership dues for 2003

One year = \$15.00

Two years = \$27.00

Please make cheques payable to EFOCC & mail to:

**Mr. Stan Raugh
4217 8th Avenue,
Temple, PA 19560**

ALL CONTENTS COPYRIGHT 2002 BY THE EFO COLLECTORS CLUB.

Authors and contributors have express permission to reuse any of their material elsewhere without permission. Except for material reprinted herein, or material individually copyrighted by the author, material herein may be reprinted elsewhere as long as full credit is given to The EFO Collector, citing the issue date and number, and giving the address of the EFOCC Secretary.

The EFO Collector is published quarterly. The deadline for any issue is the 15th of the month preceding the month of issue— e.g., 2/15, 5/15, 8/15 & 11/15. Send editorial material directly to the editor. Sample copies of The EFO Collector are available for \$3 from the secretary, 955 S. Grove Blvd, #65, Kingsland, GA 31548-5263.

New membership includes subscription to *The EFO Collector*. Application for membership, accompanied by \$16 (\$30 overseas) which covers the first year and the initiation fee, should be sent to the Secretary. Life memberships are available at \$250 (U.S and Canada), \$467 overseas. Annual dues renewal are \$15 for domestic members and \$30 for foreign members.

Advertising for The EFO Collector will be accepted at the following rates for camera-ready copy: first insertion— full page, \$30; half page, \$16; quarter page, \$9. No discounts apply. The first-insertion rates for ads requiring composition are full page, \$60; half page, \$32; quarter page, \$18. The first insertion must be fully prepaid. Classified ads will be accepted at 6c per word. The deadline for ad copy is the 15th of the month preceding the month of issue. Advertising, ad payments, and related inquiries should be directed to the Editor.

EFOCC members are entitled to three free 35-word (excluding address) classified ("EFO Post") ads annually. These should be sent directly to the editor.

EFOCC OFFICERS—1 July, 2002 to June 30, 2004

PRESIDENT/EDITOR—

CWO Jim McDevitt, 955 S.Grove Blvd., #65, Kingsland, GA 31548-5263
Phone: (912) 729-1573, Fax: (912) 729-1585, Email: <cwouscg@aol.com>

VICE-PRESIDENT-

John M. Hotchner, POB 1125, Falls Church, VA 22041-0125—Phone: (703) 820-5449,
Email: <jmhstamp@ix.netcom.com>

AUCTION DIRECTOR-

Peter L. Rikard, POB 25623, Richmond, VA 23260—Phone: (804) 550-4953,
Email: <rikard@attbi.com>

TREASURER-

David Hunt, 45 Fairway Drive, Denver, PA 17517—Phone: (717) 445-9420,
Email: <dhhunt@ptdprolog.net>

SECRETARY

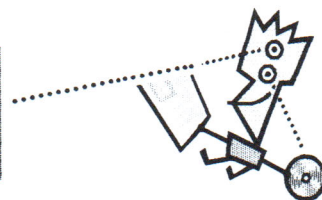
Stan Raugh, 4277 8th Ave., Temple, PA 19560—Phone: (610) 921-5717
Email: <trex@bigplanet.com>

BOARD MEMBER—VACANT

EDITOR— VACANT

ADVERTISING DIRECTOR—VACANT BOARD MEMBER—VACANT

Keep An Eye Out For . . .



20 cent Apple & Orange self-adhesive pane of twenty values discovered with die-cuts omitted.

34 cent Langston Hughes A pane of 20 values has been found with no die-cuts in Minnesota.

34 cent Love Pane a Scott 3496 pane has been discovered fully imperforate. Also, a mis-cut pane, has been discovered with five (5) die-cut-missing vertical pairs.

50 cent Seeking Royal Support Stamp Scott 2626, expertised to be missing its block tagging.

5 cent bright purple Eagle stamped envelope this 35 year old issue has been discovered tagged with calcium silicate which was intended for use on airmail stamps—only. Six or seven copies have been found.

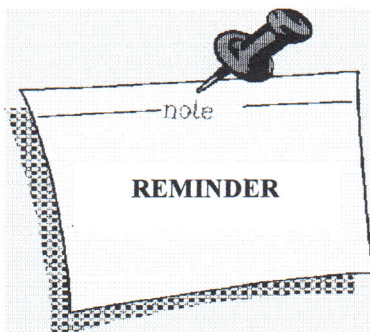
10 cent Stillwell has been discovered with a full pane of twenty stamps missing perforations.

1.6 cent nonprofit envelope Five copies of this 1969 postal stationery have been discovered and one has been expertised that it has been printed in a brown vice orange colour. A dealer discovered this find and they were purchased by EFOCC member Steven Crippe.

3.50 Priority Mail Stamps First error found in a National Monument high value series has been found with the die-cut omitted. There is a possibility that four more panes might exist.

34 cent Longleaf Pine Forest pane of ten values has been discovered with the die-cuts missing.

34 cent Winter Sports Panes have been discovered with inverted die cuts. On these panes, the bottom piece of selvage is imperforate, while the die cuts extend about one-half inch into the header above the top row of stamps.



Please check this issue's mailing address label.

If your membership number ends in "02" your membership has expired and this will be your last issue.

Renewal is \$15 for one year—\$27 for two years.

Mail checks to EFOCC secretary, Stan Rough,
4217 6th Avenue, Temple, PA 19560

Final results of Auction 94

Lot	Price	Lot	Price	Lot	Price	Lot	Price	Lot	Price	Lot	Price
1	45.00	51	3.00	101	NS	151	NS	201	NS	251	4.00
2	NS	52	12.00	102	NS	152	NS	202	7.50	252	21.00
3	NS	53	7.50	103	3.00	153	2.50	203	7.50	253	5.00
4	7.50	54	NS	104	NS	154	315.00	204	NS	254	30.00
5	NS	55	NS	105	NS	155	NS	205	NS	255	NS
6	NS	56	10.00	106	15.00	156	NS	206	NS	256	NS
7	NS	57	5.00	107	NS	157	NS	207	NS	257	NS
8	NS	58	2.50	108	NS	158	NS	208	11.00	258	NS
9	NS	59	NS	109	NS	159	NS	209	4.00	259	NS
10	NS	60	NS	110	5.50	160	NS	210	3.00	260	NS
11	NS	61	NS	111	NS	161	4.50	211	NS	261	NS
12	NS	62	NS	112	NS	162	10.00	212	30.00	262	6.00
13	NS	63	NS	113	NS	163	NS	213	5.50	263	NS
14	NS	64	NS	114	NS	164	NS	214	36.00	264	NS
15	NS	65	12.00	115	NS	165	5.00	215	41.00	265	NS
16	NS	66	NS	116	NS	166	NS	216	35.00	266	NS
17	NS	67	NS	117	NS	167	11.00	217	32.00	267	NS
18	NS	68	NS	118	NS	168	NS	218	12.00	268	100.00
19	NS	69	NS	119	NS	169	18.00	219	45.00	269	NS
20	NS	70	NS	120	NS	170	7.50	220	NS	270	3.00
21	4.00	71	NS	121	NS	171	9.00	221	26.00	271	NS
22	NS	72	NS	122	NS	172	5.50	222	NS	272	4.00
23	3.50	73	NS	123	NS	173	NS	223	NS	273	4.50
24	NS	74	NS	124	25.00	174	5.50	224	NS	274	5.00
25	4.00	75	17.00	125	NS	175	4.50	225	NS	275	NS
26	4.50	76	NS	126	NS	176	12.00	226	NS	276	NS
27	4.00	77	36.00	127	NS	177	NS	227	5.00	277	4.50
28	NS	78	NS	128	NS	178	NS	228	4.50	278	NS
29	12.00	79	8.50	129	NS	179	NS	229	NS	279	NS
30	NS	80	NS	130	NS	180	18.00	230	NS	280	2.50
31	NS	81	13.00	131	NS	181	11.00	231	2.00	281	6.50
32	NS	82	NS	132	NS	182	8.00	232	NS	282	7.50
33	NS	83	NS	133	155.00	183	NS	233	2.50	283	NS
34	NS	84	13.00	134	3.50	184	NS	234	1.00	284	NS
35	NS	85	11.00	135	10.00	185	6.00	235	1.00	285	NS
36	NS	86	NS	136	NS	186	NS	236	3.00	286	NS
37	NS	87	12.00	137	NS	187	NS	237	3.00	287	NS
38	NS	88	NS	138	9.00	188	NS	238	3.00	288	NS
39	NS	89	12.00	139	NS	189	NS	239	NS	289	NS
40	3.50	90	10.00	140	NS	190	NS	240	NS	290	NS
41	4.00	91	NS	141	NS	191	NS	241	4.00	291	NS
42	23.00	92	NS	142	18.00	192	75.00	242	3.00	292	NS
43	NS	93	7.00	143	NS	193	4.00	243	NS	293	NS
44	23.00	94	14.00	144	140.00	194	NS	244	4.00	294	NS
45	11.00	95	2.50	145	NS	195	NS	245	NS	295	NS
46	8.00	96	NS	146	NS	196	NS	246	NS	296	NS
47	NS	97	NS	147	36.00	197	NS	247	4.00	297	NS
48	NS	98	3.00	148	NS	198	NS	248	NS	298	NS
49	14.00	99	28.00	149	16.00	199	12.00	249	3.00	299	NS
50	NS	100	11.00	150	NS	200	NS	250	NS	300	NS

Lot	Price	Lot	Price	Lot	Price	Lot	Price	Lot	Price	Lot	Price
301	\$27.00	321	NS	341	\$9.00	361	NS	381	NS	401	NS
302	\$7.00	322	NS	342	\$9.00	362	NS	382	NS	402	NS
303	\$1.00	323	NS	343	NS	363	NS	383	NS	403	NS
304	\$7.00	324	NS	344	NS	364	NS	384	NS	404	\$2.00
305	NS	325	NS	345	NS	365	NS	385	NS	405	\$7.50
306	NS	326	\$4.50	346	NS	366	NS	386	NS	406	NS
307	NS	327	NS	347	NS	367	NS	387	NS	407	\$7.50
308	NS	328	NS	348	NS	368	NS	388	NS	408	NS
309	NS	329	\$7.50	349	NS	369	NS	389	NS	409	NS
310	NS	330	\$9.00	350	\$125.00	370	NS	390	NS	410	NS
311	NS	331	NS	351	\$30.00	371	NS	391	\$4.50	411	NS
312	\$15.00	332	NS	352	\$57.50	372	NS	392	\$23.00	412	NS
313	\$13.00	333	NS	353	NS	373	NS	393	\$6.50	413	\$4.00
314	\$5.00	334	NS	354	NS	374	NS	394	\$4.50	414	NS
315	NS	335	NS	355	NS	375	NS	395	\$3.50	415	NS
316	NS	336	\$38.00	356	\$140.00	376	NS	396	\$3.50	416	NS
317	\$15.00	337	\$11.00	357	\$30.00	377	NS	397	\$9.00	417	NS
318	NS	338	\$25.00	358	NS	378	\$4.00	398	\$3.00	418	NS
319	\$15.00	339	\$23.00	359	NS	379	NS	399	\$11.00		
320	\$16.00	340	\$2.50	360	\$9.00	380	NS	400	\$13.00		

Lots Sold 152

Total Sales \$2,701.50

95th Auction Comments

Well it has been a long time coming. I am still behind on some correspondence, but should be caught up by the time you get this issue of EFOCC. These are 300+ new lots at prices that are less than most online auctions start.

Auction closes December 20, 2002. That gives everyone about 6-7 weeks to send in your bid sheets.

Auction lots are on the web site WWW.EFOCC.ORG. The site has also been down for a while but is up now. My email address is Rikard~attbi.com. If you have questions or are having problems please email me.

I have lots of material for the next auction, but if you have material, especially real oddities, send it in.

All correspondence to EFOCC, PO Box 25623, Richmond, VA 23260

EFOCC Auction Rules For Consignors

Preparing Lots:

Please use a blank form from, such as contained in a recent copy of *The EFO Collector*. Photocopies are fine. Please use a separate form for each lot.

Secure each lot to the front of the form; attach large lots to the reverse side. Protect all items with mounts, glassine, etc., and stiffeners if necessary, but **be sure** item/items can be easily removed by auction director for examination and/or photographing. Do not use staples. Attach each item so that description can be easily read. A simple and easy way to mount lots is to do so on dealer sales cards, or in glassines mounted face down for easy removal.

Include a reserve (minimum bid) or write "none". Lots may be revised to accurately describe items; or returned if necessary. Your name and EFOCC number must be on the consignment form but to preserve anonymity, these are removed from the consignment sheet before sending item to successful bidders.

Send consignments to Peter L. Rikard, POB 25623, Richmond, VA 23260. Use **insured** or **registered** U. S. Mail.

Consignor Fees:

Consignor commission is 10% of the hammer price, with a minimum bid of 50 cents per lot.

Unsold lots incur a 50 cent fee per lot, and the consignor pays return postage and insurance.

Expenses and printing constraints make it impractical to picture every lot, especially those which are large in size. EFOCC will exercise discretion in picturing lots.

Consignor Special Instructions:

To save postage and labor, EFOCC can automatically re-submit unsold lots at lower minimums in a future auction, **if you instruct EFOCC clearly what to do.**

If you send duplicate or very similar lots, it is consignor's responsibility to state clearly if you would like these to be placed in different sales. Generally, EFOCC places all items received in the same sale to minimize paperwork.

Consignment/Payment Timing:

EFOCC receives consignments continually and prepare them for subsequent sales, roughly on a first in first out basis. However, large lots may be spread over several auctions.

After the close of each sale, unsold lots are offered to bidders on a first come-first served basis for \$1 over the reserve with no buyer's commission or postage. This increases total sales, makes more bidders happy, and sells more lots for consignors, all for very little additional effort.

EFOCC needs approximately one month after auction's closing date to determine successful bidders, prepare and mail invoices, mail lots, receive payment from winners, list after sale lots and accept their offers, etc., etc. Thus, consignors can expect to receive payment about four to six weeks after an auction closes.

Remember.....

Auction # 95 Closes:

Friday, December 20, 2002

Visit the EFOCC

Auction Site at

www.efocc.org

EFOCC Rules Auction #95 Bidders

How to Bid:

Please bid on a consignment form from a recent *EFO Collector*. A photocopy is fine.

Include your EFOCC membership number. For new bidders and non-EFOCC members, please include your APS membership number. Sign your bid sheet to acknowledge acceptance of the EFOCC auction rules; unsigned forms can not be accepted.

Submit bids to Peter L. Rikard, POB 25623, Richmond, VA 23260. Email <Rikard@attbi.com>

Bidding Precautions:

Minimum bids are not estimates, but are true reserves established by the consignors. Bids below the listed reserve will not be accepted.

Bidders are responsible for inaccurate bids. Bids do not have to be typed, but, please, be sure numbers and amounts are clearly legible. Confirm phone and Email bids with a written bid sheet.

Auction Bid Increments:

Please use the following increments when bidding and/or assigning reserves to consignments. Lots are sold to the highest bidder at one advance over the second highest bid.

Bid Level ~~~~~ Increment

\$1 to \$9.99.....	\$.50
\$10 to \$49.....	\$ 1.00
\$50 to \$99.....	\$ 2.50
\$100 to \$499.....	\$ 5.00
\$500 and up.....	\$ 10.00

EFOCC reduces out-of-increment bids to the next lower increment. For example, a bid of \$39.50 will be taken as \$39.00.

Special Bidding Instructions:

As the EFOCC is a small auction, special instructions can not be easily accommodated. EFOCC can not accept "BUY" bids nor "INCREASE BY...%". **Please, make your final, best, and highest bid and you will get the lot at the lowest price available.**

Bidders Payments:

A 10% buyer's premium is added to the hammer price of each lot. Buyers pay postage, plus insurance on lots valued at over \$10.00.

Payment is due upon receipt of invoice. If you will be out of town for a while just after an auction closes, or are moving to your summer home about that time, please let EFOCC know at the time you place your bids.

Returning Lots:

Within five (5) days of receipt of awarded lots, you may return any lot which is not described correctly provided such lot is still in its original condition. If an expertising certificate is a condition of bidding, please inform EFOCC of this before auction closes.

One Final Request:

Please bid generously on **donation** lots whose monies go entirely to the benefit of the EFOCC.

See these auction lots on the web
at www.EFOCC.org

Remember.....

Sale # 95 Closes:

Friday, December 20, 2002

95th Auction List

Lot Catalog	Description	Min. Bid

*****	Miscellaneous *****	
1	mix of 11 different EFO's imperf pairs, color shifts, misperfs	35.00
2	No lot	
3 A155	Only printer's waste value perfed. No gum as always. Rare!,NG	50.00
4 A160	imperf pair of printer's waste. No gum as always.,NH Hoizontal crease. Scarce value	40.00

*****	Sheet Stamp Misperfs & Miscuts *****	
5 498	1¢ 1917 WASHINGTON,HR very nice misperf	7.00
6 499	2¢ 1917 WASHINGTON,NH very nice misperf. Vertical crease	5.00
7 525	1¢ 1918 WASHINGTON,NH very nice misperf	11.00
8 634	2¢ 1926 WASHINGTON,NH very nice misperf	9.00
9 805	1½¢ 1938 M. WASH.,NH very nice misperf	10.00
10 806	2¢ 1938 J. ADAMS,NH very nice misperf	13.00
11 807	3¢ 1938 JEFFERSON,NH very nice misperf	11.00
12 832c	\$1.00 1938 WILSON,NH very nice change of design misperf. Rare !	30.00
13 858	3¢ 1939 STATEHOOD,NH hugh vertical margins, 10% wider than normal	15.00
14 899	1¢ 1940 NATL.DEF.,NH pair with right stamp very nice misperf, left stamp extra wide. Great combo	25.00
15 899	1¢ 1940 NATL.DEF.,NH very nice misperf	11.00
16 900	2¢ 1940 NATL.DEF.,NH vey nice misperf. Double paper. Rare	17.00
17 901	3¢ 1940 NATL.DEF.,NH three blind perfs, rest imperf	5.00
18 1009	3¢ 1952 GRD.COULEE nice change of legend misperf	11.00
19 1197	4¢ 1962 LOUISIANA,NH very nice misperf	9.00
20 1201	4¢ 1962 APPRENTICE,NH nice misperf down.	8.00
21 1204	4¢ 1962 HAM.ERROR,LH great misperf on a complete error issue	Donated
22 1208	5¢ 1963 FLAG,NH nice misperf	7.00
23 1280	2¢ 1966 F.WRIGHT,NH very nice misperf	8.00
24 1282	4¢ 1965 LINCOLN,NH nice misperf	5.00
25 1286	10¢ 1967 JACKSON,NH very nice misperf	9.00
26 1286A	12¢ 1968 H.FORD,NH misperf change of design	7.00
27 1287	13¢ 1967 J.KENNEDY,NH very nice change of design misperf	15.00
28 1288	15¢ 1968 O.W.HOLMES,NH Zip block with very nice misperf	50.00
29 1290	25¢ 1967 F.DOUGLASS,NH very nice change of design misperf	10.00
30 1340	6¢ 1968 HEMIS FAIR,NH nice misperf	9.00
31 1343	6¢ 1968 LAW & ORDER,NH misperf	3.00
32 1371	6¢ 1969 APOLLO 8,NH incredible misperf on a great topic	85.00
33 1391	6¢ 1970 MAINE,NH misperf	3.00
34 1392	6¢ 1970 BUFFALO,NH nice misperf	6.00
35 1393	6¢ 1970 EISENHOWER,NH very nice change of design misperf	8.00
36 1399	18¢ 1974 BLACKWELL,NH nice misperf. Rare	7.50
37 1423	6¢ 1971 WOOL IND.,NH misperf	4.00
38 1436	8¢ 1971 DICKINSON,NH very nice misperf	10.00
39 1475	8¢ 1973 LOVE,NH misperf on bottom row	5.00
40 1476	8¢ 1973 PRINTERS,NH very nice misperf	19.00
41 1477	8¢ 1973 POSTING,NH very nice misperf	8.00
42 1510	10¢ 1973 JEFFERSON,g,NH vey nice misperf	9.00
43 1525	10¢ 1974 V.F.W.,NH incredible change of design misperf	25.00
44 1544,6	10¢ 1974 PEACE,NH pair with nice misperf. LL corner bend in margin	20.00
45 1549	10¢ 1974 RETARDED,NH nice misperf	10.00

95th Auction List

Lot Catalog	Description	Min. Bid

46 1551	10¢ 1974 CHRISTMAS,NH nice misperf	7.00
47 1552	10¢ 1974 XMAS PEACE,NH Nice misperf. Rare on first adhesive issue Adhesive discoloration as normal	17.00
48 1558	10¢ 1975 BARGAINING,NH pair with misperf at an angle	3.00
49 1560	10¢ 1975 SALEM POOR,NH very nice change of design misperf	15.00
50 1561	10¢ 1975 H.SALOMON,NH very nice change of design misperf	11.00
51 1576	10¢ 1975 PEACE,NH pair with misperf	3.00
52 1580	10¢ 1975 XMAS CARD,NH single plus with angled perfs. End row copy	4.00
53 1582	2¢ 1977 SPEAK OUT,NH great misperf	13.00
54 1585	4¢ 1977 READING,NH very nice two way misperf	9.00
55 1592	10¢ 1977 PETITION,NH vry nice misperf	9.00
56 1605	29¢ 1978 LIGHTHOUSE,NH nice misperf	4.00
57 1622	13¢ 1975 FLAG,NH misperf	3.00
58 1735	15¢ 1978 "A" & EAGLE,NH very nice misperf at a slant	9.00
59 1756	15¢ 1978 G.M.COHAN,NH very nice change of legend misperf	11.00
60 1768	15¢ 1978 MADONNA,NH nice misperf	7.50
61 1800	15¢ 1979 CHRISTMAS,NH very nice misperf	11.00
62 1804	15¢ 1980 B.BANNEKER,NH nice misperf	7.50
63 1818	18¢ 1980 "B" & EAGLE,NH very nice misperf	9.00
64 1822	15¢ 1980 D.MADISON,NH very nice misperf	12.00
65 1823	15¢ 1980 E.BISSELL,NH very nice misperf	11.00
66 1833	15¢ 1980 EDUCATION,NH very nice change of design misperf	12.00
67 1846	3¢ 1983 HENRY CLAY,NH terrific misperf. Scarce	11.00
68 1855	13¢ 1982 CRAZYHORSE,NH very nice misperf	11.00
69 1860	20¢ 1982 R.BUNCHE,NH very nice misperf	9.00
70 1861	20¢ 1983 GALLAUDET,NH very nice misperf	9.00
71 1862	20¢ 1984 H.TRUMAN,NH extremely nice misperf	12.00
72 1863	22¢ 1985 AUDUBON,NH very nice misperf	11.00
73 1863	22¢ 1985 AUDUBON,NH pair with faint blind perfs	12.00
74 1869	50¢ 1985 ADM.NIMITZ,NH very nice misperf	8.00
75 1894	20¢ 1981 FLAG,NH very nice misperf	10.00
76 1928-31	18¢ 1981 Architecture,NH block with very nice misperf	50.00
77 1946	20¢ 1981 "C" & EAGLE,NH nice misperf	8.00
78	No lot	
79 1950	20¢ 1982 ROOSEVELT,NH Plate block with nice misperf	75.00
80 2004	20¢ 1982 LIBRARY,NH very nice misperf	11.00
81 2010	20¢ 1982 H.ALGER,NH very nice misperf	12.00
82 2011	20¢ 1982 AGING,NH very nice misperf	12.00
83 2015	20¢ 1982 LIBRARIES,NH very nice change of design misperf	12.00
84 2046	20¢ 1983 BABE RUTH,NH very nice misperf on a great topic 50 known!	50.00
85 2063	20¢ 1983 MADONNA,NH copyright pair with very nice misperf	25.00
86 2066	20¢ 1984 ALASKA,NH very nice misperf	13.00
87 2072	20¢ 1984 HEARTS,NH extremely nice misperf	30.00
88 2114	22¢ 1985 FLAG,NH very nice misperf	9.00
89 2139,41	22¢ 1985 DUCK DECOY,NH very nice misperfed pair on good topic. Scarce	20.00
90 2172	5¢ 1986 HUGO BLACK,NH very nice misperf. Scarce	12.00
91 2343	25¢ 1988 SC BICENT.,NH very nice misperf	13.00
92 2514	25¢ 1990 MADONNA,NH nice change of design - misperf	7.00
93 C51	7¢ 1958 JET,NH nice misperf	10.00

95th Auction List

Lot Catalog	Description	Min. Bid

94 C56	10¢ 1959 PAN-AM,NH very nice change of legend misperf	15.00
95 C63	15¢ 1961 ST.LIBERTY,NH very nice misperf	15.00
96 C78	11¢ 1971 AIRLINER,NH very nice two way misperf	13.00
97 E23	60¢ 1971 ARROWS,NH misperf. scarce	9.00
98	No lot	
99 J97	10¢ 1959 POST. DUE,NH Plate block with nice misperf. Rare!	90.00
***** Sheet Stamp Imperforates *****		
100 540a	2¢ 1919 WASHINGTON,NH vertical pair imperf between. Missing a couple of bits of gum on the back. Scott \$80.	25.00
101 901a	3¢ 1940 NATL.DEF.,LH horizontal pair imperf between. Scott \$27.50	10.00
102 1509q	10¢ 1973 FLAGS,NH horizontal pair imperf between. SE with blue line between stamps. Small red shift on right stamp, left stamp normal	20.00
103 1596a	13¢ 1975 EAGLE,NH imperf pair. Scott \$50.	20.00
104 1597a	15¢ 1978 FLAG,NH vert pair imperf. Scott \$20.	8.00
105 1622a	13¢ 1975 FLAG,NH Horizontal pair imperf between. Scott \$50.	20.00
106 1702a	13¢ 1976 CHRISTMAS,NH Imperf pair. Scott \$100.	50.00
107 1789c var	15¢ 1979 J.P.JONES,NH imperf pair with full gutter between	125.00
108 1789c var	15¢ 1979 J.P.JONES,NH single with imperf margin	20.00
109 1843a	15¢ 1980 XMAS TOYS,NH Imperf pair. Scott \$70.	30.00
110 1894a	20¢ 1981 FLAG,NH imperf pair. Scott \$35.	15.00
***** Coil Stamp Misperforations *****		
111 839	1¢ 1939 WASHINGTON,NH line pair with part plate #	4.00
112 845	5¢ 1939 MONROE,NH line single with tiny piece of plate #. Rare.	4.00
113 1055	2¢ 1954 JEFFERSON,NH misperfed line strip	9.00
114 1058	4¢ 1958 LINCOLN,NH very nice misperfed single	4.00
115 1229	5¢ 1962 WASHINGTON,NH misperfed pair. Rare!	9.00
116 1283	5¢ 1966 WASHINGTON,NH very nice misperfed pair	10.00
117 1294	\$1.00 1967 E.O'NEILL,NH pair with blind perfs	4.50
118 1297	3¢ 1975 F.PARKMAN,NH misperfed pair	6.00
119 1299	1¢ 1968 JEFFERSON,NH very nice misperfed pair	7.50
120 1305E	15¢ 1978 O.W.HOLMES,NH misperfed line strip. Dull gum	10.00
121 1338G	8¢ 1971 FLAG,NH pair with very nice misperf	9.00
122 1338a	6¢ 1968 FLAG,NH very nice misperfed single with small part of a line between	5.00
123 1615	7.9¢ 1976 DRUM,NH pair with nice misperf. rare!	17.00
124 1616	9¢ 1976 ASSEMBLY,NH misperfed line strip	10.00
125 1617	10¢ 1977 PETITION,NH nice misperfed pair	7.00
126 1813	3.5¢ 1980 VIOLINS,NH misperfed pair. damaged on front of both stamps. rare!	3.00
127 1900	5.2¢ 1983 SLEIGH,NH extremely nice misperfed pair. Scarce	15.00
128 1908	20¢ 1981 FIRE PUMP,NH misperfed coil strip of 5	Donated
129 1947	20¢ 1981 "C" & EAGLE,NH misperf pair	3.50
130 2134	14¢ 1985 ICEBOAT,NH very nice misperfed pair. Rare!	15.00
131 2252	3¢ 1988 CON.WAGON,NH nicely misperfed pair	8.00
132 2261	16.7¢ 1988 POPCORN,NG misperfed pair. No gum	2.00
133 2265	21¢ 1988 MAIL CAR,NH misperfed pair	4.00
134 2279	25¢ 1988 "E" COIL,NH nicely misperfed pair	6.00
135 2609	29¢ 1992 FLAG,NH great misperfed strip with plate # 14 on third stamp	45.00

95th Auction List

Lot Catalog	Description	Min. Bid

*****	Coils Stamp Miscuts *****	
136 597	1¢ 1923 FRANKLIN,NH line pair with partplate number, number written in pencil on top of left stamp	4.00
137 599	2¢ 1923 WASHINGTON,NH miscut line pair with nice part plate #	4.00
138 844	4½¢ 1939 WHT. HOUSE,NH line pair with part plate # RARE!	6.00
139 1055	2¢ 1954 JEFFERSON,NH plate strip with nice part plate #	4.00
140 1057	3¢ 1954 ST.LIBERTY,NH line strip with part plate # 25154	3.50
141 1059	4½¢ 1959 HERMITAGE,NH line pair with tiny part plate # 26262 or 3. Large oles, Scott \$14.	5.00
142 1059A	25¢ 1965 P.REVERE,NH line pair with partial plate #	3.00
143 1229	5¢ 1962 WASHINGTON,NH miscut line strip with part plate # 28391-0	6.00
144 1229	5¢ 1962 WASHINGTON,NH miscut line strip with part plate # 28390-1	6.00
145 1297	3¢ 1975 F.PARKMAN,NH line pair wih nice part plate #	4.00
146 1299	1¢ 1968 JEFFERSON,NH miscut strip of 7 with smear across the face	3.00
147 1305	6¢ 1968 ROOSEVELT,NH line pair with part plate # 30407-8	2.00
148 1618C	15¢ 1978 FLAG,NH nice miscut pair	15.00
149 1891	18¢ 1981 FLAG,NH nicely miscut coil pair	10.00
150 1900	5.2¢ 1983 SLEIGH,NH pair with nice miscut	8.00
151 1906	17¢ 1981 ELEC.CAR,NH very nice miscut line strip of six, plate # 2 ON TOP	12.00
152 1906	17¢ 1981 ELEC.CAR,NH very nice msicut line strip of six, plate # 1 ON TOP	12.00
153 2259	13.2¢ 1988 COAL CAR,NH misperfed strip of five with plate #2 on middle stamp	30.00
154 2280	25¢ 1988 FLAG,NH very nice miscut	6.00
*****	Coil Stamp Imperforates *****	
155 1059Ac	25¢ 1965 P.REVERE,NH Imperf pair. Scott \$55.	17.00
156 1299b	1¢ 1968 JEFFERSON,NH imperf pair. Scott \$30.	12.00
157 1305Ej	15¢ 1978 O.W.HOLMES,NH imperf pair. Scott \$90.	25.00
158 1615Cf var	8.4¢ 1978 PIANO,NH imperf miscut pair with EE bars. RARE!	60.00
159 1615Cf	8.4¢ 1978 PIANO,NH imperf air. Scott \$17.50	8.00
160 1615Cf	8.4¢ 1978 PIANO,NH imperf pair	5.50
161 1615CF	8.4¢ PIANO,NH Imperf pair with Newark, NJ" precancel gap pair	25.00
162 1617b	10¢ 1977 PETITION,NH Imperf pair. Scott \$60.	22.00
163 1618Cd	15¢ 1978 FLAG,NH imperf pair. Scott \$25.	9.00
164 1618b	13¢ 1975 BELL,NH imperf pair. Scott \$25.	9.00
165 1625a	13¢ 1975 FLAG,NH imperf pair. Scott \$9.	9.00
166 1625a	13¢ 1975 FLAG,NH imperf pair	9.50
167 1891a	18¢ 1981 FLAG,NH imperf pair. Scott \$30.	10.00
168 1891a	18¢ 1981 FLAG,NH imperf line strip of six with plate #5. on third stamp	110.00
169 1895d	20¢ 1981 FLAG,NH imperf pair. Scott \$10.	4.00
170 1897Ac	2¢ 1983 Locomotive,NH Imperf pair. Scott \$55.	20.00
171 2115	22¢ 1985 FLAG,NH imperf miscut pair	25.00
172 2115e	22¢ 1985 FLAG,NH imperf pair. Scott \$15.	4.00
173 2133b	12.5¢ 1985 PUSH CART,NH Imperf pair. Scott \$55.	20.00
174 2265a	21¢ 1988 MAIL CAR,NH imperf pair. Scott \$65.	25.00
175 2280c	25¢ 1988 FLAG,NH imperf pair	5.00
176 2457a	10¢ 1991 TRAILER,NH imperf pair. Scott \$350.	140.00

95th Auction List

Lot Catalog	Description	Min. Bid

177 2904c	5¢ 1996 MOUNTAIN,NH Imperf pair. Scott \$500.	200.00
178 2913a	32¢ 1995 FLAG,NH imperf pair	20.00
179 2915Ab	32¢ 1995 FLAG,NH Imperf pair with small tan color shift to the right	30.00
***** Color Smears *****		
180 998	3¢ 1951 CONFED.VET,NH very nice smear	4.00
181 1035	3¢ 1954 ST.LIBERTY,NH strip of 4 with nice smear on middle two stamps	6.00
182 1109	3¢ 1958 MACKINAC,NH nice smear in margin	3.00
183 1608	50¢ 1979 LAMP,NH black smear across whole stamp, very heavy at bottom	Donated
184 1618C	15¢ 1978 FLAG,NH strip of 4 with blue smear across top of stamps	3.00
185 1896a	20¢ 1981 FLAG,NH pane with red smear on upper left stamp	3.50
186 1896a	20¢ 1981 FLAG,NH single with red smear	Donated
187 2026	20¢ 1982 MADONNA,NH block of 4 with black blobs on right two stamps	4.50
188 2072	20¢ 1984 HEARTS,NH strip of three with orange smear on top of stamps	2.50
189 2094	20¢ 1984 H.MELVILLE,NH block of 6 with blue smear on front and back	5.00
190 3297b	NH complete pane with blue ink blobs	10.00
191 E23	60¢ 1971 ARROWS,NH Red arrow has blue ink smear	4.00
192 J102	11¢ 1978 POST. DUE,NH very nice red smear	7.50
***** Over and Under Inking *****		
193 813	8¢ 1938 VAN BUREN,NH very nice over inking	5.00
194 881	3¢ 1940 V.HERBERT,NH Pair. light partial offset on back. Mainly on upper stamp. Rare	4.00
195 953	3¢ 1948 G.W.CARVER,NH very nice over inking	5.00
196 966	3¢ 1948 PALOMAR,NH nicely underinked, especially on bottom legend.	5.00
197 1172	4¢ 1960 J.F.DULLES,LH heavy overinking	2.00
198 1618C	15¢ 1978 FLAG,NH single missing some black	Donated
199 1874	15¢ 1981 E.DIRKSEN,NH under inked, legend at bottom almost completely missing	Donated
200 1894	20¢ 1981 FLAG,NH pair missing most of the black	20.00
201 1894	20¢ 1981 FLAG,NH missing most of the blue in the flag	11.00
202 2114	22¢ 1985 FLAG,NH nice offset on back	15.00
203 2980	32¢ 1995 SUFFRAGE,NH plate block with much lighter brown on two right stamps	12.00
204 3066	50¢ 1996 J.COCHRAN,NH missing proactively all of the black	20.00
205 C26	8¢ 1944 TRANSPORT,NH greatly over inked	6.00
206 C92	31¢ 1978 WRIGHTS,NH block of four with left pair missing some of the blue in the bottom legends. Right pair normal	15.00
***** Misregistration & Other Color Freaks *****		
207 905	3¢ 1942 AMER.EAGLE,NH block with plate #23032-36 scarce.	12.00
208 910	5¢ 1943 CZECH.,NH very nice vignette shift up	7.00
209 913	5¢ 1943 NETHERLAND,NH very nice vignette shift down	9.00
210 917	5¢ 1943 YUGOSLAVIA,NH nice vignette shift up	4.00
211 918	5¢ 1943 ALBANIA,NH two singles with shifts up and down	3.00
212 1047	20¢ 1956 MONTICELLO,NH very nice blue ink streak over bottom legend. very obvious in color.	4.00
213 1206	4¢ 1962 EDUCATION,NH very nice black shift up.	9.00
214 1233	5¢ 1963 EMAN.PROC.,NH very nice color shift down. Rare!	12.00
215 1265	5¢ 1965 MGNA.CARTA,pb4,NH with black color shift up	12.00
216 1610	\$1.00 1979 RUSH LAMP,NH nice orange color shift to the right	8.00
217 1324	5¢ 1967 CANADA,pb4,MNH with nic blue color shift	10.00

95th Auction List

Lot Catalog	Description	Min. Bid

218 1338	6¢ 1968 FLAG,NH plate block with small misperf down, doubling of flag, legend and denomination on top stamps only	10.00
219 1385	6¢ 1969 CHILDREN,NH very nice black offset doubling	4.00
220 1389	6¢ 1970 CANOE,NH black color shift	2.50
221 1394	8¢ 1971 EISENHOWER,NH beautiful full offset on the back	25.00
222 1407	6¢ 1970 S.CAROLINA,NH beautiful color (not perf) shift	25.00
223 1414	6¢ 1970 NATIVITY,NH color shift produces doubling effect	3.00
224 1419	6¢ 1970 UN ANNIV.,NH nice black color shift	8.00
225 1432	8¢ 1971 REVOLUTION,NH very nice color shift	12.00
226 1433	8¢ 1971 JOHN SLOAN,NH nice black color shift	10.00
227 1434	8¢ 1971 MOON CRAFT,NH very nice blue offset n the back	15.00
228 1439	8¢ 1971 CARE,NH blue streak across stamp	2.50
229 1447	8¢ 1972 PEACE CORP,NH very nice red color shift left	8.00
230 1452	6¢ 1972 WOLF TRAP,NH nice offset on back	12.00
231 1453	8¢ 1972 GEYSER,NH very nice multiple color shift to left creates a fourth person	10.00
232 1454	15¢ 1972 MCKINLEY,NH very nice color shift	10.00
233 1455	8¢ 1972 FAMILY,NH very nice black color shift	12.00
234 1460	6¢ 1972 OLYMPICS,NH zip block of 6 with broken red ring in UR stamp	3.50
235 1468	8¢ 1972 MAIL ORDER,NH nice multiple color shift down into margin	5.00
236 1468	8¢ 1972 MAIL ORDER,NH plate strip of 12 with black color shift creating two tailed cat.	40.00
237 1469	8¢ 1972 MEDICINE,NH very nice orange color shift down	11.00
238 1471	8¢ 1972 XMAS ANGEL,NH nice color shift	8.00
239 1472	8¢ 1972 XMAS SANTA,NH color shift creates nice "double bugle"	5.00
240 1474	8¢ 1972 STAMPS,NH color shift down	3.00
241 1474	8¢ 1972 STAMPS,NH color shift up	3.00
242 1478	8¢ 1973 POSTRIDER,NH nice color shift	10.00
243 1480	8¢ 1973 MERCHANT pair with very nice black color shift up	15.00
244 1501	8¢ 1973 TRANSISTOR,NH plate block with nice black color shift to the right	30.00
245 1506	10¢ 1974 WHEAT,NH very nice color shift down	10.00
246 1509	10¢ 1973 FLAGS,NH extremely nice red color shift	10.00
247 1511	10¢ 1974 ZIP CODE,NH very nice multiple color shift	10.00
248 1529	10¢ 1974 SKYLAB,NH nice blue color shift up	6.00
249 1542	10¢ 1974 KENTUCKY,NH very nice green color shift	10.00
250 1547	10¢ 1974 ENERGY,NH color shift	3.00
251 1557	10¢ 1975 MARINER 10,NH very nice red and blue color shift	9.00
252 1577-8	10¢ 1975 BANKING & COMMERCE,NH pair with nice brown color shift	6.00
253 1580	10¢ 1975 XMAS CARD,NH very nice color shift creates nice doubling	10.00
254 1596	13¢ 1975 EAGLE,NH large yellow color shift. Obvious on person	7.50
255 1608	50¢ 1979 LAMP,L extremely nice orange shift down	13.00
256 1618c	15¢ 1975 Flag,NH pair missing some of the gray, becomes a 5¢ stamp	20.00
257 1311	5¢ 1966 SIPEX SHT.,NH two different color shifts	5.00
258 1690	13¢ 1976 FRANKLIN,NH nice dark blue color shift up	7.00
259 1730	13¢ 1977 CHRISTMAS,NH nice black color shift	4.00
260 1757	\$1.04 1978 CAPEX SHT.,NH plate strip with small color shift	7.50
261 1790	10¢ 1979 DECATHALON,NH zip block with small color shift, creates doubled arm	3.00

95th Auction List

Lot Catalog	Description	Min. Bid

262	No lot	
263 1824	15¢ 1980 H.KELLER,NH great color shift. Scarce	25.00
264 1895	20¢ 1981 FLAG,NH red one third into blue field	5.00
265 1896a	20¢ 1981 FLAG,NH pane with printer's waste mark on back of stamps	8.00
266 1896a	20¢ 1981 FLAG,NH pane with triple offset on back	3.00
267 1926	18¢ 1981 E.MILLAY,NH very nice black color shift makes an 8¢ stamp	12.00
268 1934	18¢ 1981 REMINGTON,NH very nice brown color shift	13.00
269 1936	20¢ 1981 J.HOBAN,NH strip of 3 with gray line on right edge of stamps	3.50
270 1950	20¢ 1982 ROOSEVELT,NH offset on back. Scarce!	12.00
271 2089	20¢ 1984 JIM THORPE,NH pair with brown line on left stamp	4.00
272 2091	20¢ 1984 SEAWAY,NH pair with small white spot (bubble) on perfs between stamps	3.50
273 2115	22¢ 1985 FLAG,NH pair with Erie Blue variety	25.00
274 2142	22¢ 1985 OLYMPICS,NH single with small black spot on top of stamp	3.00
275 2155	22¢ 1985 HORSES,NH pair with black spot between stamps	3.50
276 2165	22¢ 1985 MADONNA,NH color shift creates great doubling effect	5.00
277 2202	22¢ 1986 PUPPY LOVE,NH strip of 4 with blue line under Love on all stamps	4.00
278 2235,6	22¢ 1986 NAVAJO ART,NH pair with very nice black color shift	17.00
279 2284-5	25¢ 1988 GROSBEAK & OWL,NH pair with color shift	5.00
280 2368	22¢ 1987 XMAS/ORN.,NH great multiple color shift	17.00
281 2561	29¢ 1991 DIST.COLUM,NH very nice black color shift	9.00
282 2635	29¢ 1992 ALASKA HWY,NH great black color shift up 10mm and 2mm left	25.00
283 2980	32¢ 1995 SUFFRAGE,NH Plate block with 3mm black color shift down.	25.00
284 2980	32¢ 1995 SUFFRAGE,NH black shifted down and to the right	5.00
285 2980	32¢ 1995 SUFFRAGE,NH Black color shift down 2mm	5.00
286 CE2	16¢ 1936 GREAT SEAL,NH very nice vignette shift up	10.00
287 C76	10¢ 1969 MAN/MOON,NH blue color shift down shows earth into moon	8.00
288 C87	18¢ 1974 ST.LIBERTY,NH very nice black color shift	15.00
289 C91-2	31¢ 1978 WRIGHTS,NH pair with extremely nice black color shift up	35.00
290 C98a	40¢ 1980 P.MAZZEI,NH Grat multiple color shift of scarce perf variety	30.00
291 J92	4¢ 1959 POST. DUE,NH extremely nice vignette shift up	11.00
292 J97	10¢ 1959 POST. DUE,NH extremely nice black vignette shift into red border.	10.00
293 J100	\$1.00 1959 POST. DUE,NH great black vignette shift into margin. Dull gum	13.00
294 J100	\$1.00 1959 POST. DUE denomination shifted to far right, used	3.00
295 WX92	138 Christmas Seal,NH wonderful color shift looks like a misperf	5.00
*****	Color-Omitted Stamps *****	
296 1363c	6¢ 1968 CHRISTMAS,NH light yellow omitted. Scott \$65.	30.00
297 1384c	6¢ 1969 CHRISTMAS,NH missing the light green. Scott \$22.50	7.00
298 1555a	10¢ 1975 D.GRIFFITH,NH brown engraved omitted. Scott \$625.	275.00
299 2057b	20¢ 1983 N.TESLA,NH single black omitted. Scott \$87.50	40.00
300 2281b	25¢ 1988 HONEYBEE,NH pair missing the engraved black. Scott \$120.	50.00
301 xxx	rotary commemorative with no printing. Probably a missing color on a single color,NH issue	8.00
*****	Booklet Freaks & Errors *****	
302 1213a	5¢ 1962 WASHINGTON,NH extra wide pane	5.00

95th Auction List

Lot Catalog	Description	Min. Bid
*****	*****	*****
303 1395b	8¢ 1971 EISENHOWER,NH set of eight panes 32908,9,10,11 UL and LL all with 50-65% plate numbers	50.00
304 1737a	15¢ 1978 ROSES,NH pane with extremely nice misperf.Rare	40.00
305 1949a	20¢ 1982 SHEEP,NH booklet pane with great misperf. Plate # 10	25.00
306 C64c	8¢ 1962 CAPITOL,NH unexploded booklet with 3 panes 28405 plus two panes 28404 at 50%. High bright front cover stock , normal back cover stock.	35.00
*****	Gutters *****	
307 1498	8¢ 1973 RURAL MAIL,NH very nice guttersnipe	4.00
308 2153	22¢ 1985 SOC.SECUR.,NH very nice guttersnipe	10.00
*****	Stationery *****	
309 U586	16¢ Surcharged envelope,NH offset surcharge on back	10.00
310 UX72a	9¢ Nathan Hale,NH missing the "¢" sign. Scott \$110. copy of SPA certificate	40.00
*****	Tagging Varieties *****	
311 1238	5¢ 1963 CITY MAIL,NH very nice blue tagging offset shows up as doubling	4.00

Remember that the earliest dated bid wins in a tie !!!
Send in your bids now, don't wait til it is too late.



STAMPS FOR THE WOUNDED SEEKS DONATIONS

Stamps For The Wounded, founded by Ernie Kehr in 1942, exists to provide stamps and other collectibles to Armed Force Veterans, who use them to occupy their time productively, and to develop goals that keep up interest in the hobby, and in life itself.

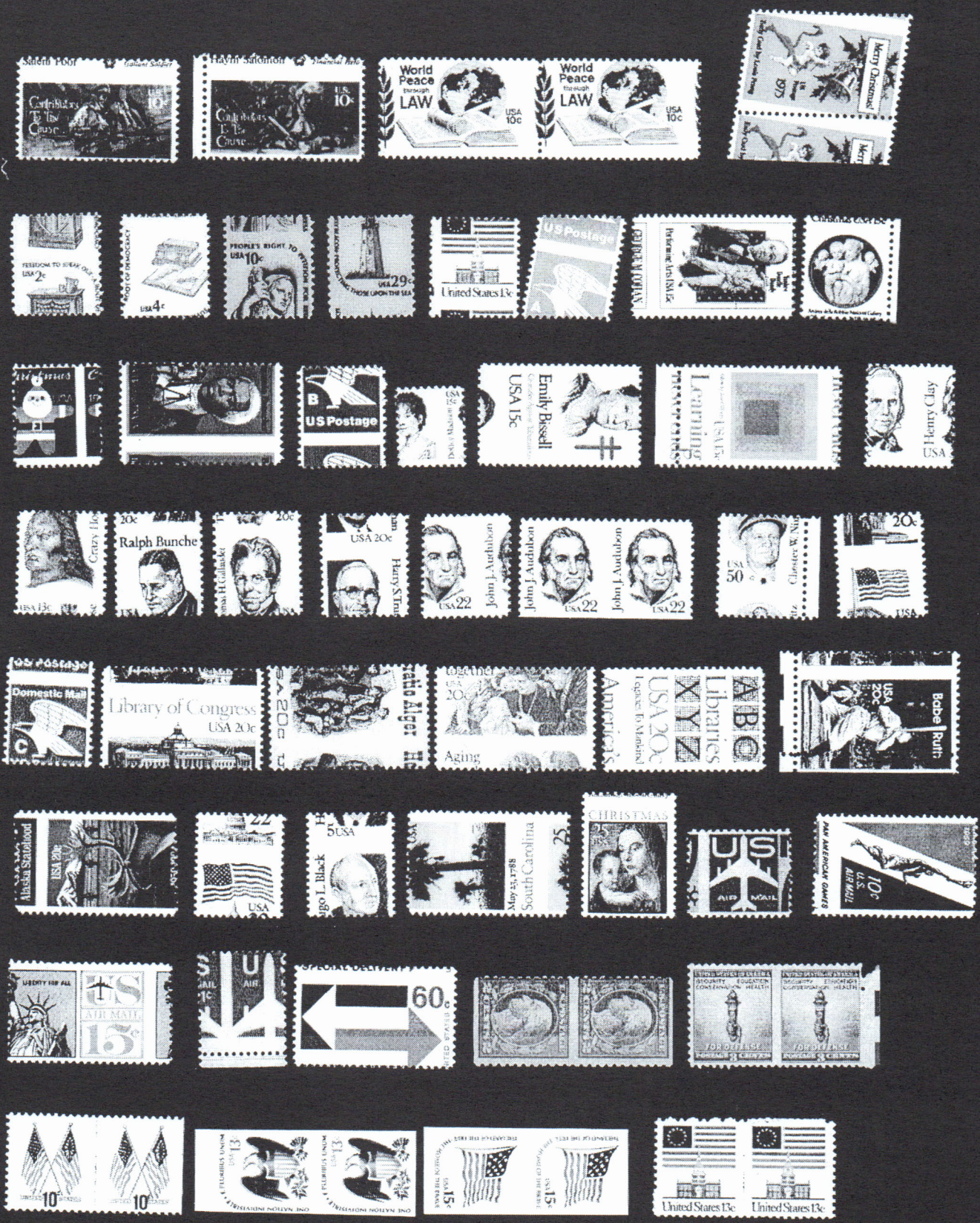
As SFTW looks toward its 57th year, we ask that stamp collectors remember SFTW's work as you dispose of excess philatelic material. We need material throughout the year, but it is especially welcome as the holiday season draws near. We now serve over 11,000 individual in-and-out-patients, and 56 organized stamp clubs in veteran's hospitals and convalescent centers - nation wide.

Stamps of all kinds, covers, and philatelic literature and supplies of any type, in any quantity , are needed. Tax deductible cash donations are also helpful to finance stamp supplies and the postage costs of sending out our parcels.

STFW is an authorized non-profit organization, operating under the sponsorship of Lions International. Donations may be sent to STFW/LI at P. O. Box 1125, Falls Church, VA 22041. Donations for which a tax receipt is requested should include a rough inventory or listing with a valuation according to catalogue value, or on some other reasonable basis.

An informational pamphlet will be sent on request. Contact SFTW Vice President John M. Hotchner, 703-820-5449, or at Falls Church, VA address as given above.

49
50
51
52
53
54
55
56
57
58
59
60
61
62
63
64
65
66
67
68
69
70
71
72
73
74
75
77
80
81
82
83
84
86
88
90
91
92
93
94
95
96
97
100
101
102
103
104
105



106
107



108
109
110
111
112



113
114
115
116
117



118
119
120
121
122



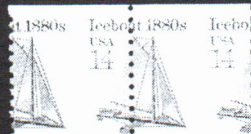
123
124
125
126



127
128
129



130
131
132
133
134



135
136
137



138

139

141



140

142

145

147



143

148

149



144

150

154



146

155



151

152



153

156

157



158

159

160

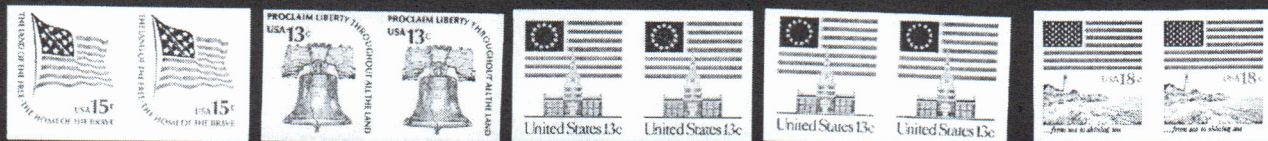
161

162



163
164
165

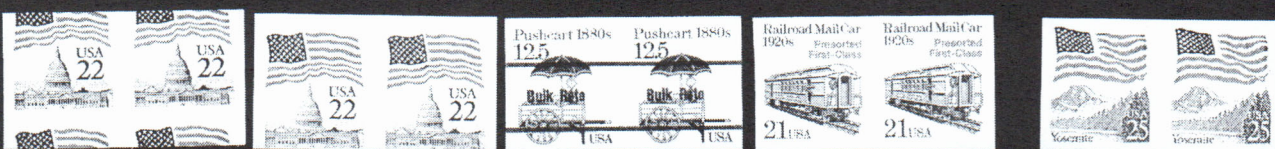
166
167



168
169
170



171
172
173
174
175



176
177
178
179
180



181
182
183



184
186
191
192
193



190
195
196



194
197
198
199
200
201



202
204
205
208
209
210



211
212
213
214
216



219
220
221
222
223
224



225
226
227
228
229



230
231
232
233
235



237
238
239
240
241
246



242
243
245
247
248





300

301

307

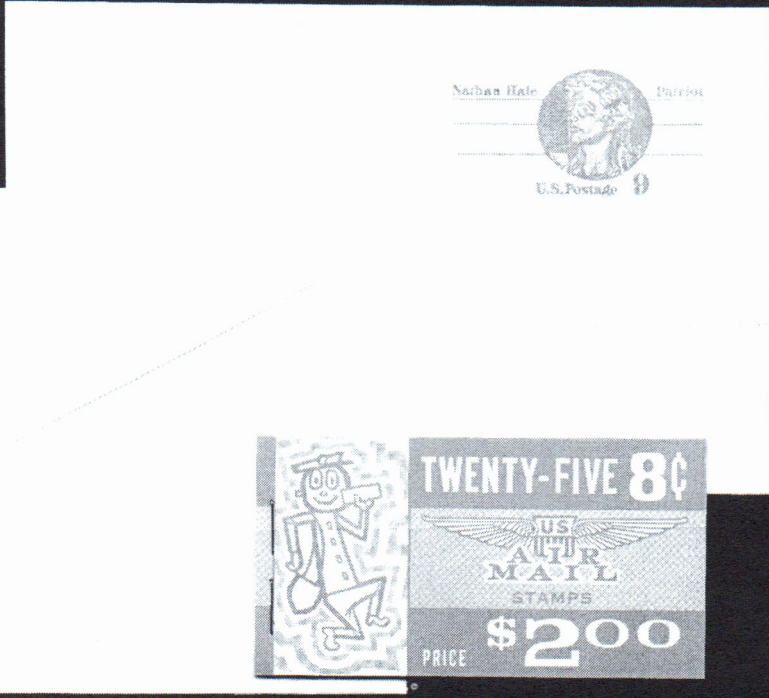
308



311



310



309



306

305

304



EX

303

302

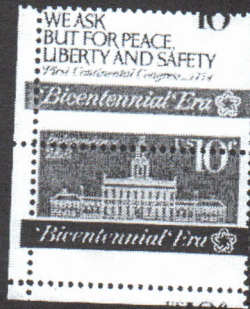


28

44

48

76



79

85

87



89

99

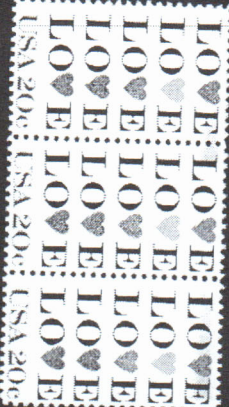
185

187



188

189



203

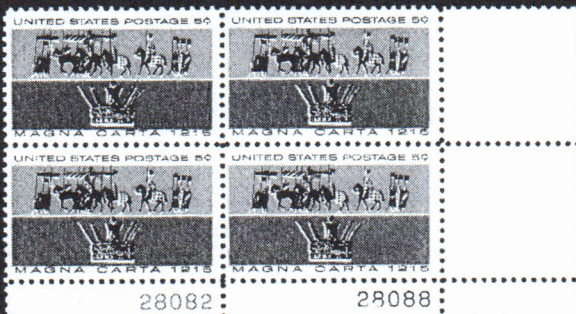
206

207



215

217



218

234



244

261



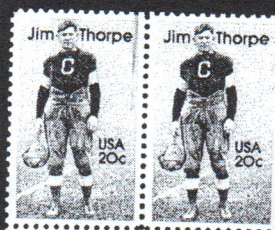
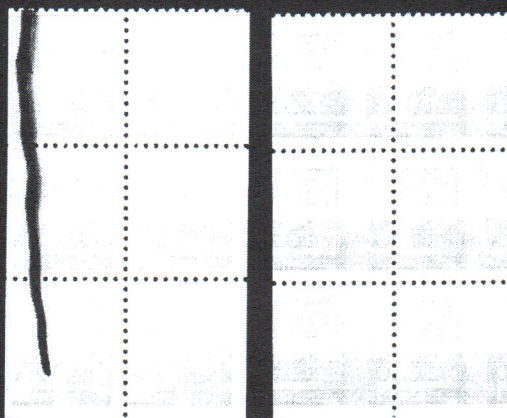
265

266

269

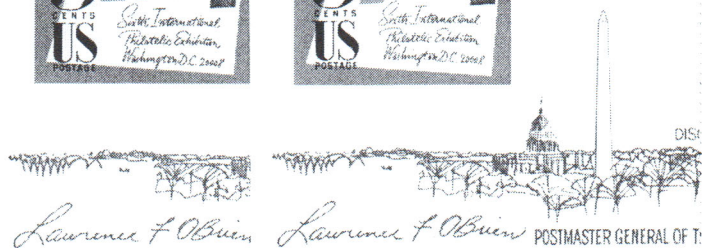
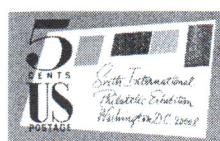
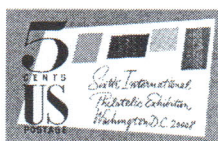
271

272



257

SIXTH INTERNATIONAL PHILATELIC SIXTH INTERNATIONAL PHILATELIC EXHIBITION, WASHINGTON D.C. 1966



283

236

260



38627



This 'n That

Stan Raugh (610) 921-5717
This 'n That Editor
4217 8th Avenue
Temple, PA 19560-1805
E-mail: trex@bigplanet.com

Welcome to a new column we would like to offer in every future issue.

This 'n That will keep us up-to-date on those tidbits of news that do not fit into any of our other regularly scheduled columns or features.

However, we need your help, because otherwise the writers and editors won't know about many of the items that belong here.

What types of news are we looking for? Here are some suggestions:

Report if you or someone else has an EFO exhibit at a show, whether or not an award is won. Give us the exhibitor's name, the show, title of their exhibit, brief description, etc.

And if they are a non-member, give us their name and address so we can send them a sample copy and membership form!

If you are looking for material to create an exhibit, or write an article, forward that information to us so we can print a request.

The column would also like to note if any members give presentations to their local stamp club on EFOs.

Or, if you "cherrypick" a nice EFO out of a dealer's junk bin—let us know!

Almost anything! Let us know what you are doing and seeing out there in EFO land. Inquiring minds want to know!

Reminder: 2002 - 2003 Dues are Due



Buyers—Sellers of EFO Material



To sell/buy EFO material, contact any of the following buyers/sellers of error, freak, oddity philatelic material. **Remember** – to offer for confidential outright purchase or sale at a public auction it's best to first send a description and/or clear photograph/photocopy before shipping the item. **Do not forget** to include your address, telephone number and return postage/s.a.s.e.

Ag, P O Box 1, Medford NJ 08055	- 609-654-7415
B. Trading Co. 114 Quail St, Albany, NY 12206	- 518-465-3497
Beck Stamp Auctions, POB 2506, Mesa, AZ 85214-2506	- 480-969-5835
Steve Crippe, POB 236, Bothell, WA 98-41-0236	- 425-487-2789
Howard Frank, POB 340868, Brooklyn, NY 11234	- Foreign EFO's only
Marvin Frey, 2199 Legion St, Bellmore, NY	- 516-826-1852
Stan Goldfarb, 8520 Atwell Rd, Potomac, MD 20854	- 301-279-0754
Gary Hoecker, POB 20284, Portland, OR 97294-0284	- 503, 252-7300
Sam Houston Philatelics, POB 820087, Houston, TX 77282	- 800-231-5962
John Hotchner, POB 1125, Falls Church, VA 22041	- 703-820-5449
John Koval, POB 83, Griffith, IN 46319	- 219-924-4836
Leo Malz & Co, 425 Broadway, NY, NY 10013	- 212-877-7223
Montclair Stamp Co., POB 38, Cheltenham, PA 19012	- 215-728-7836
Michael Mules, POB 342, Big Bend, WI	- 414-318-0880
J. Nalbandian, POB 71, E. Greenwich, RI 02818	- 401-885-5020
Nippon Philatelics, Drawer 7300, Carmel, CA 93921	- 831-625-2643
Pacific NW Auctions, TLPO 8087, Kirkland, WA 98034	- 206-481-9627
Phil-Ital, RR3 - 449, Sag Harbor, NY 11963	- 206-481-9627
Princeton Philatelics, POB 304, Tappan, NY	- 845-359-7434
Jacques C. Schiff, Jr., 195 Main St, Ridgefield Pk, NJ	- 201-641-5566
Martin Sellinger, POB 47, White Plains, NY	- 914-948-4246
Saskatoon Stamp Centre, (BNA & Canada varieties - only), Box 1870, Saskatoon, SK Canada S7K 3S2	- 800-205-8814
Smith, Thomas E. POB 23149, Phoenix, AZ 85063-3149	- 623-205-1163
John Tison, P. O. Box 50730, Irvine, CA 92619	- 714-556-3630

REMINDER!!!!

TIME TO RENEW EFOCC DUES FOR 2002 TO 2003

SEE PAGE 5

COLLECT DEFENSIVELY!

THIEVES LIKE STAMPS, TOO!

Anything valuable interests a thief, and because stamp collections and philatelic holdings are both portable and negotiable, they are especially attractive. Theft menaces our hobby.

In 1965 the American Philatelic Society created a Stamp Theft Committee. Its purpose has been to collect data on stolen philatelic property; to standardize and organize descriptions; to counsel, educate, and warn collectors and dealers of ever-present dangers; and to cooperate with law enforcement agencies at all stages of investigation. The accumulated data is continuously available to all levels of law enforcement.

The unguarded, unprotected collection is an invitation to thieves. Do not extend the invitation. You can protect your collection by taking several precautions:

Use security measures like burglar-resistant safes, burglar alarm systems, bank vaults, and the careful recording of important philatelic material.

Photograph, microfilm, or photocopy the valuable items in your collection. Keep that record in a safe place but never with the collection itself.

Know the terms of your APS collector insurance policy - which is available to members at a reasonable cost - and abide by those terms.

If You Have a Theft:

If you are the victim of a stamp theft, touch nothing and follow these steps:

Call the police immediately and describe your loss as clearly as possible. Many police officers are unfamiliar with philately and may not recognize the seriousness of a stamp crime. You should remind them that stamp theft is widespread and that professionals are engaged in the practice, just as they are in stealing furs, jewelry, coins, and art objects. Request a copy of the police report for later reference.

For more information and/or to report a theft, please contact the American Philatelic Society by calling 814-237-3803 or visit their website at <www.stamps.org>

Advise the investigating officers that you have contacted the APS Stamp Theft Committee. The services of the committee are not limited to APS members; **they are available to all victims of stamp theft.**



EFOCC Awards & Committees

"The Clyde" Award

Requirements

1. Established in 1996 to honor Mr. Clyde Jennings. The requirements are a significant accomplishment in at least three of the following areas:
 - a. Service to the EFO collectors' organizations (such as the APS, EFOCC, BIA, etc.)
 - b. Exhibition of EFO materials (exhibit must contain 25%, or better, of EFO material), at a qualifying World Series of Philately Show or higher level and the exhibit must have garnered a Vermeil, or higher, award.
 - c. Promotion of EFO's through speeches, training seminars and any other means necessary to bring the field of EFO collecting to the collector and/or general public.
 - d. Contributions to EFO literature in the philatelic press and/or general press to educate others.
 - e. Demonstrate morally and ethically acceptable standards of business and personal conduct when working with others regarding the information and sale of EFO material.
2. EFOCC membership is desirable - but not necessary.

Selection

1. The Award will be presented once a year to a maximum of one living honoree and one posthumous recognition.
2. Selection will be based on nominations being accepted from June 1 to July 31, 1998.
3. The Award will be presented during the Eastern Regional meetings at VAPEX or a site selected by the board of directors.

3. The "Clyde" Award will be a one time honor as well as being permanent recognition of the honoree's contributions.

4. Nominations for the Award can be made to the selection committee by any EFOCC member other than the person himself. Each nomination shall be accompanied with suitable documentation of the nominee's work within the listed requirements.

5. Selection will be made by the EFOCC Board of Directors and the five (5) most recently recognized, living honorees. This will maintain a constant voting field of 11 possible members.

6. A total of nine votes, or greater, is required for awarding the honor.

7. Submit all candidates to any Board Member or the Secretary, P.O. Box 1126, Kingsland, GA 31548-1126.

Robert E. Manning, Jr. Award

This Committee is responsible for selecting the best article published in *The EFO Collector* within the membership year, August to June. Elected EFOCC officers and current selection committee members are not eligible. All other authors, including past selection committee members, are eligible. Please note - EFOCC membership is not a requirement. The Committee will consist of the three previous award recipients. The award is established as one year's free dues to the author or each joint author.

Awards Committee

This Committee will authorize a "Certificate of Appreciation" to be presented to those individuals - or institutions - for their efforts which promote the advancement of knowledge in the EFO area of philately. This Committee will distribute EFO Club Award Ribbons (1st-2nd-3rd) to Club members for them to give to award local, regional or national show judges to award exhibits which best exemplify and/or use EFO material.

Individual EFOCC members are requested to distribute EFOCC exhibit award ribbons to show award committees for shows they wish to attend. Contact the EFOCC secretary for first, second, and third place show ribbons.

Nominating Committee

This Committee is responsible for providing a list of candidates to the general membership for the elected offices of President, Vice-President, Secretary and Treasurer. Any member interested in holding an office should advise the chairman of this Committee when nominations are called for in *The EFO Collector*.

EFO Critique Service

Mr. John M. Hotchner, P.O. Box 1125, Falls Church, VA 22041-0125 is the contact person. There is no cost for this service - other than that for, postage. The photocopy of your exhibit will be reviewed by one or more members experienced in exhibiting and/or philatelic judging. This is an inexpensive way to improve your exhibit and garner higher awards at shows.

The EFO Collector

The Club Journal is published four times per year and covers a wide variety of articles, domestic and foreign, about EFO's, exhibitions, Club activities and so forth. Contributions of articles and news stories are earnestly solicited. If you are not a perfect author - don't be shy - *The EFO Collector* is the perfect venue to "get your feet wet". Clear photocopies for illustrations should accompany the article, if possible. If you need help, please feel free to call/write the editor.

**"TO ERR IS HUMAN
TO FIND IS DIVINE"**

EFOCC Auction Consignment Form

EFOCC use – only ⇒ AUCTION #:

LOT #:

Consignor: _____ USED Address: _____ _____ Telephone: (____) - _____ Email/Fax: _____ EFOCC Membership No: _____	Country (if not U.S.) _____ Catalog No. _____ Catalog Value: _____	Condition (circle): NH LH HH HR NG Please check if this is a donation lot: <input type="checkbox"/> Please note Minimum Bid: \$ _____
--	--	---

Description of item: {Please note any faults and fasten lots below this line or on the reverse side}

APS Membership No: _____

Instructions: Fill in all information. Attach each lot to the front of one form, using a stock card, face-down glassine or other mount. Use separate rigid sheet for larger lots and attach a completed form. No staples - please. Make sure it is easy for us to remove and re-insert each lot.



Send consignment form(s) with lot(s) to: **Peter L. Rikard, P. O. Box 25623, Richmond, VA 23260**
For you protection, we recommend that you send lot(s) by registered or insured mail.



EFOCC Auction Bid Sheet

Name: _____ EFOCC #: _____ *New Bidders.....APS Membership appreciated:* _____
 Address: _____ Phone: (____) _____ *Please limit my purchases to:* _____
 City: _____ State: _____ Zip: _____ \$ _____

Please execute the following bids for me in EFOCC Auction # **95**

 {Signature - all bid sheets must be signed} {Date}

Earliest postmark wins tie bids!!

Lot#	Bid	Lot#	Bid	Lot#	Bid	Lot#	Bid	Lot#	Bid	Lot#	Bid

Postage will be charged to the bidder. A 10% buyer's premium will be added to successful bids to EFOCC members; a 12% buyer's premium will be added to non-EFOCC member successful bidders. Mail bid sheets to:

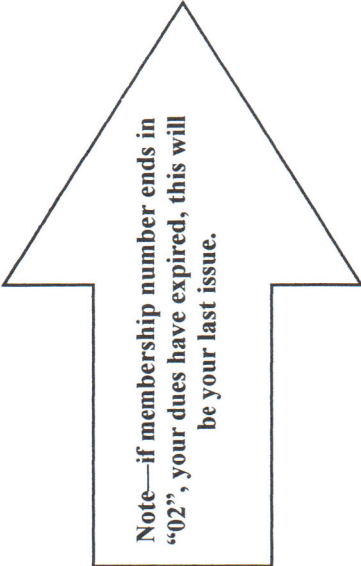
Peter L. Rikard, P. O. Box 25623, Richmond, VA 23260

The EFO Collectors' Club

4217 8th Avenue,
Temple, PA 19560

**PERIODICAL/DATED MATTER
POSTMASTER, DO NOT
DELAY DELIVERY**

Return Service Requested



Note—if membership number ends in
“02”, your dues have expired, this will
be your last issue.