

EFO COLLECTOR



Published by the EFO Collectors' Club
Copyright 1986 EFO Collectors' Club, A Nonprofit Organization
APS Affiliate No. 103, Member COPO



APS Affiliate 103

Volume IX No. 1 (#47)

August, 1986

Founded 1978

New Board Elected

As will be evident in other parts of this issue, your new officers have taken command and begun to function. Please support them as you have supported EFOCC in the past! Of particular note is that the Office of Secretary has passed to CWO James McDevitt USCG (Ret.), 1903 Village Rd., W., Norwood, Mass. 02062-2524. Please refer membership, dues and special order questions to him. New "Prez" John Hotchner will, of course, be happy to continue to hear your ideas, complaints, suggestions, availability as a volunteer, etc.

Life membership has become a reality for the EFOCC. I am happy to report that our first member to commit himself to the financial solvency of our organization is none other than one of the original founders, past president, past secretary, current president.... Mister EFO himself, John M. Hotchner.

Another strong supporter who has constantly contributed with money when needed, and whose dedicated research gave us the "EFO Index," Doctor Mary V. McIndoo also became a Life Member. And finally (for this report) your Treasurer has also made this firm commitment.

Anybody else interested in this program can contact me for either a one-time payment or time payments. Come on - JOIN THE EFOCC LIFE MEMBERSHIP!

(signed)
Phil Nazak

TABLE OF CONTENTS

New Board Elected	1	President's Perspective	11
First Life Members	1	EFO Post	11
SFTW Donations	2	Your Help Needed! Let's Take Stock...	12
EFO Hunt	2	And Grow	
Editor's Notes	2	Secretary's Report	14
A U.S. EFO Postal Stationery Glossary	3	Final Letter From Scott Shaulis	15
C3a Jewelry Available	6	More Errors Caught Just In Time	16
One Of A Kind	6	Question of The Month	16
EFOCC Stars	7		
Introducing...Howard P. Gates, Jr.	7		
Trades Wanted	8	Clerk Quirks - Multiple Cancels	19
Help!	8	1986-1988 EFOCC Officers and Board	20
Letters To The Editor	8	24th EFOCC Auction Action	20
EFOCC Award to Be Given at VAPEX '86	9	EFOCC Auction #26	21
Partial Plate Number Gauge Still Available	9	Auction Photos	23
More On The Dollar Invert	10	Auction Bid Sheet and Rules	27

"Stamps for the Wounded" Donations

Thanks to Lou Novacheck and M.S. George for donations to SFTW.

SFTW serves sick and wounded veterans in over 60 of the Nation's Veterans Administration Hospitals. Stamps are used as a proven successful therapy.

Stamps - including commemoratives and revenue stamps, envelopes with special post marks, FDCs, airmail flights, etc., may be sent to EFOCCs John Hotchner, who works with SFTW. Send them to him at P.O. Box 1125, Falls Church, Va. 22041-0125. "Fancy" and old stamps are welcome, but SFTW can use even multiple copies of current common stamps. Collections donated are tax deductible.

EFO HUNT

by
Scott A. Shaulis

Here's a small puzzle that should keep all of you busy for a while. This Search-A-Word puzzle consists of 36 arbitrarily picked words or phrases that are related to the EFO field.

The words or phrases to locate are: ALBINO, BISECT, BLIND PERFS, CRAZY PERFS, DAG, DOCTOR BLADES, EE BARS, ERROR, FOLDOVER, FREAKS, GHOST, GRILLS, GUTTER SNIPE, IMPERFORATE, INK BLOBS, INVERTS, JENNY, MISCUT, MISPERF, ODDITY, OFFSET, OVERINKED, OVERPRINTS, PAN AMS, PICTORIALS, PLATE VARIETY, PRINTER'S WASTE, ST. LAWRENCE SEAWAY, SHADES, SOLVENT SPILL, SPECIMEN, SPLATTER, TETE BECHE, THATCHER FERRY BRIDGE, and WATERMARKS.

Oops, I left one out! Let's see, the first EFOCC member who sends me the 36th word (along with the other 35 properly located!), will win an EFO of my choice, worth at least \$5.00. HINT: It has more than four letters but less than eight. And, it is something we all are.

Good Luck, everybody! No officers, please.

Letters may be used more than once, and words run vertically, horizontally, diagonally, and even backwards.

EDITOR'S NOTES

Beginning in this issue is the first installment of "A U.S. EFO Postal Stationery Glossary," by Frank Pogue. This project was initiated to fill a recognized void, and while the definitions published herein will not include many terms used today or in the past, the series will cover those words and terms being used today which, in the author's opinion, deserve clarification and publication now.

In the not too distant future, Frank hopes to publish a handbook which will include a much more detailed glossary. Comments and questions may be sent to the author directly, or in care of the editor. Those wishing a reply should include a SASE.

Overdue is a hearty "Congratulations" to member John Campbell, who received a Bronze Medal at NASHPEX '86 for used EFO material he had on display. Perhaps John will do up an article in the near future to share that display with the membership of the EFOCC???

I took the liberty of experimenting with the masthead this month. I'd like to hear from ALL of you with comments, suggestions, criticisms, etc, good, bad or indifferent. Do you like it?? Do you hate it?? What??

A U.S. EFO POSTAL STATIONERY GLOSSARY

by
F. C. Pogue

Since I proposed an EFO postal stationery listing, I have accumulated information on so many varieties of material that I've had to change my original plan. I now feel that a complete catalog would be a monumental task beyond my ability. However, I believe that an illustrated U.S. EFO postal stationery booklet similar to Dr. Segal's EFO booklet (Errors, Freaks and Oddities on U. S. Stamps: Question Marks in Philately, by Dr. Stanley B. Segal) would be a realistic goal and would be of interest to general collectors as well as specialists.

At present, dealers and collectors often use different terms to describe the same item, so some standardization of terms must be established before such a booklet can be attempted. With that in mind, and as a means of telling you about some of the fascinating material available, I submit the following glossary. Some terms refer to others that I feel better describe the item. "Sc" indicates Scott Catalog, and "EFOC," followed by data indicates the Volume, Issue and Page or Auction Lot that shows illustrations in back issues of EFO Collector. Some non-EFO postal stationery terms are also included.

Constructive suggestions for making additions, deletions or other corrections, or for help in this project, are welcome.

I had help from a few individuals, especially John M. Hotchner, Earl McAfee, Scott Shaulis, Frederick Frelinghuysen and Dr. Austin P. Haller, but most of the information came from catalogs, various philatelic publications, examining dealers' stock, and the philatelic media.

AD COLLAR: Printed advertising surrounding the stamp on some NESBITT stamped envelopes. A very scarce oddity.

ALBINO: An embossed, but uninked, stamped envelope or wrapper error, generally caused by two or more envelope blanks entering the press together. The top blank gets inked and embossed, the lower one is embossed only. Used albinos, especially those with special markings such as "Returned For Postage," are extra desirable. Web fed presses do not produce albinos (see MISSING COLOR). Albino varieties include:

Misplaced Albino: A variety where the embossing is not in its normal location.

Partial Albino: A variety where the blank or other material covered only part of the printed area (see EFOC V-V, Lot 607).

Surcharged Albino: A variety with a printed revaluation.

More albino varieties are listed under DOUBLE IMPRESSIONS.

CAP ON TWO: A die flaw variety of the 1887-94 2¢ Washington Envelope.

CHANGELING: An ink color change due to exposure to bright light, chemical fumes, heat or other causes. Greens, reds, violets and yellows are especially prone to change. Changelings are usually worth much less than normal stamps, but can be interesting study material.

COLOR ERROR: An item printed in the wrong color. Usually the result of an incorrect die being substituted for the one intended, but sometimes caused by using the wrong ink. Examples include Sc U429k and U436h.

COLOR SHIFT: A variety where one or more colors of a multicolored issue are misaligned. Also called MISREGISTERED COLOR.

COMBINATION or COMPOUND stamped envelope: Double stamped envelopes issued in 1960-61 to meet a temporary special need (see Figure 1).

CORNER CARD: An imprinted return address usually located in the upper left corner of an envelope or card.

CRAZY CUT: A proposed term for postal stationery cut in an unusual shape because of a precutting paper fold. Aerogramme paperfold crazy cuts showing plate numbers are especially desirable. The few reported examples include: Sc UC50, Plate #38193; UC57, Plate #40829; and UC59, Plate #41270 (see EFOC, VIII-4, p7).



Figure 1

CREASE: See PAPER CREASE.

CUT SQUARE: A square or rectangle containing the stamp cut from postal stationery. An acceptable way to collect envelope and wrapper stamps, but not for postal cards. See FULL CORNER for better, and ENTIRE for best methods of collecting this material.

CUT TO SHAPE: A stamp cut from postal stationery and trimmed close to and around the design. Unacceptable way to collect unless the stamps are very rare.

DIE CRACK: All items that I have seen listed as such are really PAPER CREASES.

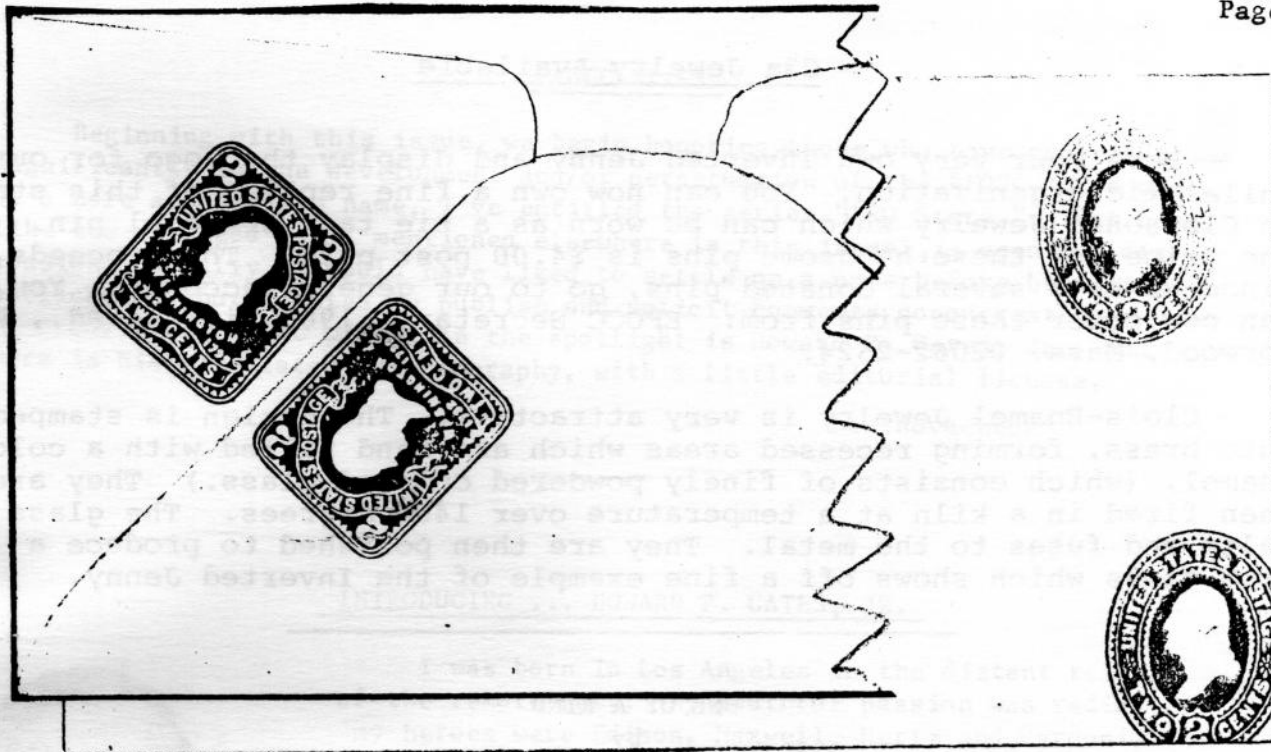
DIE CUTTING REVERSED: Sometimes called INVERTED DIE CUT. The result of printed sheets of printed letter sheets or aerogrammes being inverted during the cutting process.

DIE FLAW: For ones of special interest, see CAP ON TWO and SCOOP DIE.

DIE VARIETY: Usually the result of each die being "tailor made" to fit a particular press. Most are considered EFO.

DOUBLE ENVELOPE: Two envelopes folded together. Usually the result of the same action producing albinos. Both the normal and the albino go onto the folding machine. Only the albino is gummed and the albino bottom flap is joined to the side flaps of the outer envelope. A scarcer variety consists of two normally printed envelope blanks getting folded together.

DOUBLE or MULTIPLE IMPRESSION: An item created when the stationery has been imprinted more than once, usually with the same indicia. Generally, the impressions must overlap at or near the normal printing positions to be considered an error, although there are exceptions (see postal card example in EFOC VI-4, p12). Variations include Different Prints Superimposed, Sc U411h, U411i, U429j, U429k and U429l; Normal Over Albino; 4c Albino Over 5c Normal, Sc U544c and U544d; or with One or Both Impressions Misplaced (see Figures 2 and 3). Also see GHOST TAGGING.



Figures 2 and 3



Figure 4

DOUBLE or MULTIPLE SURCHARGE: Usually the extra surcharge must overlap near its normal position to be considered an error (see Figure 4 at left), but sometimes an extra inverted impression or other variation gets catalog status (see Sc UX33C), and sometimes they don't (see EFOC VI-4, p12). There are many freak and error varieties of the 1920-25 envelope surcharges, and 1920 and 1952 postal card ones. Most were not intended but some were TO ORDER.

DOUGHNUT: See HICKY or HICKEY SPOT.

ENTIRE: A complete item of postal stationery, the most preferred method of collecting.

FILLED EMBOSSEING: Dirty dies or ink lumps may fill die recesses and cause letters or other parts of the design to be distorted or missing (see Figure 5 at right).

FOLDOVER or PAPERFOLD: Accidental folds made at some point in production of the material. Also see CRAZY CUT and PREPRINTING PAPERFOLD.

FRONT: An envelope obverse detached from the back; a sort of a "giant CUT SQUARE." A seldom used method of collecting envelopes.

FULL CORNER: Similar to a CUT SQUARE, but with back and side flaps attached at the corner. They are usually cut larger than a cut square.

GHOST IMPRESSION: See GHOST TAGGING.



Figure 5

C3a Jewelry Available

Have your very own Inverted Jenny and display the logo for our philatelic organization. You can now own a fine replica of this stamp in Cloisonne Jewelry which can be worn as a tie tack or lapel pin. The price for these handsome pins is \$4.00 post paid. The proceeds, since we have several donated pins, go to our general account. You can now order these pins from: EFOCC Secretary, 1903 Village Rd., W., Norwood, Mass. 02062-2524.

Clois-Enamel Jewelry is very attractive. The design is stamped into brass, forming recessed areas which are hand filled with a color enamel, (which consists of finely powdered colored glass.) They are then fired in a kiln at a temperature over 1400 degrees. The glass melts and fuses to the metal. They are then polished to produce a high gloss which shows off a fine example of the Inverted Jenny.

ONE OF A KIND
by
Michael Litvak

I propose a "One of a Kind" column in which each of us writes about what may or may not be one of our own one of a kind EFOs. These special EFOs would include certain paper folds, ink smears, crazy perfs, etc.

To initiate this column, I shall write about a one of a kind ink smear which I acquired at the Philatelic Section at the Terminal Annex in downtown Los Angeles. I needed 100 stamps to place on envelopes for invitations to a family party. Since at the time I collected coils, I asked the clerk for coil stamps. After arriving home with the stamps, I began to place them on the envelopes. When I spotted the ink smear, I screamed in delight. I had finally acquired a freak at the Post Office! As you can see, a drop of ink (the same brown as that of the stamp) ended up on the body of the eagle, and was smeared across the next six stamps in the strip. The unique aspect of this acquisition is that the clerk had to count the strip of 100 stamps twice, because he had lost count the first time through. Thus, he failed to notice the smear twice.

In future issues of The Collector, I plan to write about other stamps which I think are one of a kind. Some are misperfs and consequently are probably not unique. But in 12 years of collecting EFOs, I have yet to see other copies of similar misperfs.

I encourage all of you to write about your one of a kind. Reader response could be used to prove you right or wrong. When you do write, please be sure to include a photocopy of your stamp(s). Let's see what develops in this column!

(Editor's Note: Correspondence should be addressed to the author at 1866 Loma Vista St., Pasadena, CA 91104, or to the editor.)



EFOCC STARS

Beginning with this issue, we begin honoring those who have contributed significantly to the development and/or perpetuation of the EFOCC. For want of a more appropriate name, I've entitled the series "EFO Stars." That name, like the masthead (as I mentioned elsewhere in this issue), is open for discussion. Ideally, I would have liked to settle on a name before beginning publication, but I opted to publish and solicit comments concurrently.

Our first EFOCC member in the spotlight is Howard P. Gates, Jr., and here is his capsulated autobiography, with a little editorial license.

Lou Novacheck

INTRODUCING ... HOWARD P. GATES, JR.



I was born in Los Angeles in the distant reaches of the remote past. My youthful passion was radio, my heroes were Edison, Maxwell, Hertz and Marconi, and I got my ham license at age twelve. This led me into a professional career in electronics. I graduated from the University of California at Berkeley in electrical engineering in 1939, and returned after World War II for some graduate study.

I did both analytical and laboratory research on antennas and ionospheric radio propagation at the Navy Electronics Laboratory, and then got into system design and development at Hughes, Litton, and Teledyne. I ultimately ended up in Washington, D.C., as Deputy Assistant Secretary of the Army for Research and Development.

Since leaving that job, my interest in stamp collecting has had a chance to develop. Because of my background in mathematical and statistical analysis, my philately took a strange turn. I spent weeks attempting to find the relationship between U.S. Airmail stamp characteristics (such as face value, age, quantity issued, sheet or coil, commemorative or definitive) and catalog prices, with a view toward predicting prices. The relationships exist alright, but price predictability does not, as my two Stamp Collector articles on this topic, published in 1972 and 1981, bear out.

Since then, I've written four articles for Stamp Collector on major error prices, price trends, proliferation, and collection costs. My trusty old Hewlett Packard HP-85 computer provides a great deal of help in performing these analyses.

I've also published four articles written just for fun: one explaining just who Robert Millikan was, in SC; an April Fool's Day piece proving that stamp prices increase as the quantity goes up; one in our local Fredericksburg (VA) paper on how mail to our rural address is all too frequently mis-sent to some other post office; and one in The American Philatelist that, based on a lot of 1880's postal cards I'd come across, showed the harassment a dilatory bolt manufacturer received from his customers.

A few years ago I became fascinated with stamps that, by reason of missing colors, misperforation, or misprinting, ended up without inscription. I wrote two articles on that for Stamp Collector, and last year published a catalog of missing-inscription stamps.

I won Bronze Awards in 1985 from The Collectors Club of Kansas City for two of my articles, "Crazy For Bolts," and "A Modern Error Price Index."

**TAYLOR
MADE**
PROTECTIVE POUCHES

**Clear, Strong, Inert,
Dimensionally Stable
DuPont "MYLAR" Type D**

- COVER PROTECTORS.
- PAGE PROTECTORS.
- "TUCK'S T's" (pouches & sleeves
for cover mounting w/o adhesive)
- COVER PAGES.



☎ (215) 566-7067

Taylor Made Company
PO Box 406
Lima, Pa. 19037

* MYLAR is a trade name of Dupont

* TUCK'S T's is a trade name of TAYLOR MADE Pat. applied for

TRADES WANTED

by
John M. Hotchner

Would you like to trade EFO material? If so, drop me a note ASAP with a 40-word general description of what you are looking for and/or what you have to trade.

I will do up a page of these for the next possible Collector.

HELP!

by
John M. Hotchner

EFO related articles are needed for placement in this journal, but also for placement in Linn's, which will give us a publicity tag line whenever the club sponsors written contributions, and for the U.S. Specialist, Journal of the Bureau Issues Association.

PLEASE use some of the free time that summer always seems to bring to get to that writing project you've been thinking about.

I am willing to help with research, editing and even some drafting, if you have a project on the drawing board. The EFOCC needs your work. We need more than scholarly articles. They are great, but your opinions, experiences, hard-won wisdom and "How To" instructional articles are also very helpful to all readers.

Please contact me if you can make a contribution, or would like some help toward a contribution.

LETTERS TO THE EDITOR

Dear Dan,

....Sorry that Scott (Shaulis) has been hounded to a point where he no longer feels appreciated. Though I can find fault with the way some of the stamps are reproduced I feel that he is doing an outstanding job with the restrictions that he has to work under. Few, if any of us could do it any better. I for one could never find the time or patience to do it. And the idea of handling so many stamps and so much money belonging to others would make me a nervous wreck even without a bunch of guff from the club clods.....

Francis C. Pogue

(Editor's Note: Although this was not really a letter to me, I felt the content of the letter warranted publication. It's obvious that, as the author states, few, if any could do this job. Otherwise, when we made the announcement that we needed a new Auction Director, we would have received more than three letters.)

Dear Editor,

I was quite surprised when I saw the new auction photos. You've gone full circle: from unbelievably horrible to unbelievably good auction photographs.

Jacques Schiff

Dear Editor,

I was pleased to see the improvement in auction illustrations -- it makes the EFO Collector look quite a bit more professional.

Howard Gates

Dear Editor,

I have just received the U.S. error book by Stephen R. Datz, and although it only shows major errors and missing colors, it is a great book. I was very glad to see our ad in the book...

Jerry Karnow

Editor's note: For those who missed the original ad in the June issue, it is General Philatelic Corp., PO Box 402, Loveland, CO 80537. Price: \$10.00 ppd.

EFOCC Award To Be Given At VAPEX '86



Awards Director Phil Nazak advises that arrangements have been made for EFOCC's Ribbon Award to be given at VAPEX '86. (It is available to all national shows where there are at least three exhibits in which at least 25% of the content is EFO material.)

It would be nice if an EFOCC member won the award! Potential EFOCC exhibitors are encouraged to write to Leroy P. Collins, III, P.O. Box 2183 Norfolk, Virginia 23501 early to obtain a copy of the hot-off-the-press VAPEX prospectus!

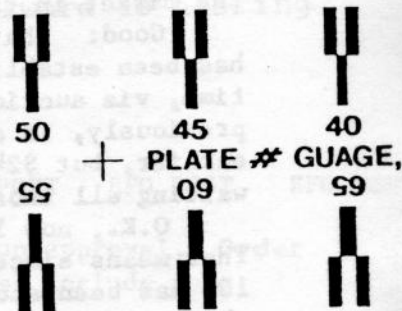
This year's show will be held November 21-23, 1986 in the Virginia Beach, Virginia Convention Center, "the Pavilion". Up to 400 frames will be available.

Our EFOCC Regional Meeting at VAPEX - the 4th Annual Saturday Dutch Treat Breakfast will be held at 8:30 A.M., Saturday, November 22. Why not put it on your calendar now: November 22, at Virginia Beach.

PARTIAL PLATE NUMBER GAUGE STILL AVAILABLE

Our member Phil Beutel has invented something that long needed inventing.

Partial plate numbers on coil and booklet pane plate numbers are measured by per cent (%) of the number present. Until today it has always been 1/3rd guess and 2/3rds estimate as to what the proper "%" figure is. With Phil's new gauge, you can pin it down exactly!



Partial Example

This very useful tool is available for \$3.50 post paid and Phil has donated 25 to EFOCC. Order from the EFOCC Secretary, 1903 Village Rd., W., Norwood, Mass. 02062-2524. Act now and you can get the rare first printing EFO version with "GAUGE" misspelled!

Dealers interested in quantity discounts should write to Plate # Gauge, P.O. Box 15964, Colorado Springs, Colorado 80935.

MORE ON THE DOLLAR INVERT

by
Clyde Jennings

As about all of us in philately are, whether we be EFOers or not, I am well aware of the recent discovery of the new so-called "dollar" invert. To date, however, all I know about the item is what I have read in the philatelic media, or been told by some knowledgeable folks. But that doesn't keep me from having some private thoughts, doing some personal musings, or maybe it's just that I have seen some past "merchandisings" of philatelic items. The merchandising angle comes quite naturally, for after all, I spent the largest part of my business years in sales.

Let me hasten to add one thing right here real quick-like: I do not know the fortunate finder of the item, who the current owner is, nor who the go-between was, if indeed there was one. So my about-to-be-expressed thoughts are strictly general in nature, not specific as to individual(s) involved.

One of my first thoughts harkened back to Mr. William T. Robey, he of airmail invert fame. What a wealthy man he would have been today had he not been so eager to sell! What did he get? - \$15,000 for all 100 of them? Let's just daydream into the present and say he decided to unload in today's market, at a mean, minimum, average of only \$100,000 apiece, say. Multiplied by 100, my calculations come out to a cool ten million - and that's with no premiums on multiple or position pieces. Only cocaine could make a return like that on a \$24 investment. And forget the debt service since 1918; after all, it would only have to be figured on twenty-four bucks.

That brings us to the newest invert. So I ask myself, "What would you do, Clyde, if you had come into possession of the remaining 85 of the initial find?" (And remember that word "initial," because we'll get back to it later, O.K.?)

Well, I don't collect large multiples, so a single would have sufficed me. Good - mount it. But what do I do with the remaining 84? Sell 'em, of course. But HOW?

First (and this is left over from my selling days), you create a demand. I'm talking about a REAL demand. Like, how about announcing you are going to remove a single, sell it, and keep the rest intact? With all those collectors (speculators? investors?) out there, a situation like that oughta create a real, and I do mean a REAL demand for that one, only available baby. So you auction it, and it realizes a big fat premium price - say around \$25,000 - \$30,000, since some feel it may be the only one to come on the market in their lifetime.

Good: That's the reaction I wanted. Now the bait's out and the price has been established. So I proceed to unload, to piecemeal out a few at a time, via auction and/or private treaty, always mentioning what it "realized" previously, in an auction. Won't reach the hypothetical 10 million I mentioned earlier, but \$2½ million is not a bad return, either. And that's not waiting all those years I used in the airmail invert figures.

O.K., now let's get back to that word "initial" I earmarked above. That means since the stamps were printed 400 at a time, and only a pane of 100 has been accounted for, there are potentially 300 more out there somewhere. That 300 possibility would have kept the more conservative bidders from going overboard as may have happened since the one at auction opened at only \$1050 on the book. At \$2500 the book dropped out, and the lot was then on the floor where it finally knocked down at \$5000. Maybe I should have said "only" \$5000. Only, because that's a long way from the \$25 - \$30,000 I envisioned. So now, having failed to establish the kind of realization I had hoped, what to do? Well, I just stick 'em in the bank, and wait to see if any of those other 300 turn up. The longer they don't, or any part of them, the stronger my 84 become.

Dollar stamps in post offices move fairly slowly, but even so, I'd say about two years is a good bet on how long I'd have to wait. Then we auction one more, pointing out no more have turned up meantime, and this time establish a true going price!

Recollections of #1058a come to mind, followed by memories of #476A; and there have been others, too. Yep, merchandising's the game, folks.

President's Perspective by John M. Hotchner

I began EFOCC's first decade in 1978 as President, and it looks like I'll finish the decade in 1988 as President. I wish this were not the case since retreading old officers is no wiser than retreading old tires - which if you've ever been stuck by the side of the road with an unraveled retread - you'll learn is often a false economy.

I want to pay tribute to Larry S. Weiss, Phil Nazak and Daniel S. Pagter who have in that order served as our Presidents between mid 1980 and mid 1986. They and their dedicated officers and committee chairpersons have worked hard to improve EFOCC as a service club worthy of its Members participation, dues dollars and loyalty.

That underlined phrase is what I'm adopting as my goal for the next two years.

You can help by doing three things:

1. Complete and send me the questionnaire (or a xerox of it) so that I and my colleagues on the Board will know what you want.
2. Support our efforts by participating in the club's activities, writing to the Editor of this journal with your thoughts and reactions to EFOCC and goings on in the EFO world, and donating money, excess postage, auction lots or time on an EFOCC project.
3. Consider becoming involved as a committee chairperson or worker. We need YOU. There is so much talent in this club that we should never run out of good officer candidates to bring new ideas and perspectives to leadership positions. If you would like to help and join the inner circle of club workers, drop me a note.

Again, please complete the questionnaire. I'm looking forward to hearing from you.

ST EFO POST EFO POST EFO POST EFO POST EFO POST EFO POST EFO POST EFO POST

US #1730 red-shifted 2 mm, only \$1.00 to introduce my US EFO stamps on approval. Order now and I will donate a \$5.00 freak to the EFOCC in your name. Please include your EFOCC #. Thank you. Ag, P.O. Box 1, Medford, NJ 08055

SALE: 14¢ Sinclair Lewis, imperf between. Horizontal pairs \$20.00 each. Contact Thomas Smith, P.O. Box 23149, Phoenix, AZ 85063-3149.

SALE: "UN-EFOs." That is, they're really not EFO material to put to auction, BUT they're not normal either. Send SASE for list. Lou Novacheck, P.O. Box 149, Fort Meade, MD 20755-0149.

BUY: EFOCC wants to buy US mint postage up to 50¢ denomination at 87% of face - CASH! Minimum \$15.00. Contact EFOCC Treasurer Phil Nazak, P.O. Box 662, Binghamton, NY 13902-0622. Write first for amounts of \$100 or more. DONATIONS ACCEPTED ANYTIME!!

Fellow Members of EFOCC

In the years since Marcel Sager ran the first EFO flag up the flag pole to see who would salute, the EFO Collectors Club has grown from 6 to over 350 steady members. We have accomplished a good deal in establishing regular programs for our membership and we hope it has been a fruitful experience for all. The EFOCC can grow further - both in numbers of people and range of activities. We ask that you be on the lookout for collector friends who you can introduce and give us any ideas you may have for attracting new members.

For our part, we intend to see that we have an attractive Club that you can be proud of. In order to do this, we will need your participation in Club activities. Answers to the following questions will help us to see in what direction you want the Club to go. Please complete the questionnaire and return it to me at P.O. Box 1125, Falls Church, VA. 22041-0125.

John M. Hotchner and the EFOCC Officers

EFOCC Questionnaire

I Name (Optional) _____ Club # _____

Address _____

II Please indicate your response in the appropriate box:

	<u>Pleased</u>	<u>Displeased</u>		<u>Pleased</u>	<u>Displeased</u>
<u>EFO Collector</u>	<input type="checkbox"/>	<input type="checkbox"/>	Show participation	<input type="checkbox"/>	<input type="checkbox"/>
Mail Auctions	<input type="checkbox"/>	<input type="checkbox"/>	Exhibit critique		
Circuit Systems	<input type="checkbox"/>	<input type="checkbox"/>	service	<input type="checkbox"/>	<input type="checkbox"/>
			Club administration	<input type="checkbox"/>	<input type="checkbox"/>

III Comments and Suggestions. If "Displeased" is marked above, please state your reasons:

IV What would you like to see more (M) or less (L) of in the EFO Collector? Or is coverage about right (A)?

____ USA EFOS ____ Canadian EFOS ____ Foreign EFOS ____ Counterfeits/Forgeries

____ Booklet pane EFOS ____ Meter EFOS ____ Coil EFOS ____ postal stationary EFOS

____ cancellation EFOS ____ tagging EFOS ____ revenue EFOS ____ literature review

____ auction recaps & realizations ____ Q's & A's ____ EFO activity at shows

____ illustrations ____ reprints from the popular press Member experiences in: _____

buying and selling EFOS ____ exhibiting EFOS ____ organizing EFO collections

____ collection presentation (A Page From My Album series) ____ More member ads

____ Marketing practices and price setting process. Other: _____

Comments: _____

- IVa Can you contribute a regular column or an occasional piece for the Collector? _____
On what subject? _____ (Editor will get in touch with you)
- V Postage rates, copying costs and pages per issue largely determine dues. Would you be willing to pay higher dues so that we could have more pages in the Collector?
Yes ☐ No ☐ Comments on dues levels: _____
- VI Would you like to see EFOCC establish regular committees to serve as central collecting points for information and reports of existing material (coil EFOs, booklet pane EFOs, color EFOs, for instance)? ☐ Yes ☐ No If yes, would you serve on or head a Committee? If yes, in what area? _____
- VII Would you like to see EFOCC establish any additional awards? If so, for what? _____
- VIII Have you a quantity of one or more EFOs that you would like to donate to the EFO club for sale to Members (only) ☐ Yes; or that you might sell to EFO Club Members (only) at a bargain price. ☐ Yes
- IX We need members to volunteer to set up and host regional EFO Member meetings at shows across the country (with free ad space for the show and the meeting given in the EFOC.) Can you do this? _____
- X Are you interested in chairing or serving on a revived Ethics Committee? _____
- XI Are you an EFO Exhibitor? _____ If so, please give your exhibit title: _____
- XII What other programs for members would you like to see EFOCC establish? _____
- XIII Have you any suggestion as to how we might attract new members? _____
- XIV Do you have any suggestions regarding any other aspect of Club activities? _____

USE THE FOLLOWING SPACE OR EXTRA SHEETS TO COMPLETE STATEMENTS WHICH MAY BE LONGER THAN THE SPACES PROVIDED.

PLEASE COMPLETE AS SOON AS POSSIBLE AND MAIL TO JOHN HOTCHNER, P.O. BOX 1125, FALLS CHURCH, VA. 22041-0125. THANK YOU FOR YOUR HELP IN MAKING EFOCC BETTER!!!!

Welcome To Our New Members

- #537 Vernon C. Moore - 6511 Sloan St., Houston, TX. 77087 - Design Errors
 - #538 Francis Joseph Coveney - 17 Burbank Dr., Orchard Park, New York 14127-2369 - Coils
 - #539 Curtis C. Hunt - 3126 14th St., Columbus, IN. 47201 - #807 and Freaks and Oddities
 - #540 James D. Bachman - R. #3, Box 75, New Tripoli, PA. 18066 - Misperfs, Missing Colors and Shifts
 - #541 John M. Jonus - 92 Piermont Rd., Closter, NJ 07624 - Imperf Coils
 - #542 Charles Grabhorn - 1628 N. Bosart Ave., Indianapolis, IN.
 - #543 Dennis Ryan - 120 St. Lawrence #213, Janesville, WI. 53545 - All U.S.
 - #544 Stephen D. Sholder - 9 Cypress Ave., Port Washington, NY 11050-3905 - Everything U.S.
 - #545 Virginia A. Hall - 3404 Exposition, Austin, TX. 78703 - Exhibits
 - #546 Leopold Beaudet - P.O. Box 8315, Alta Vista Terminal, Ottawa, Ont., K1G 3H8 Canada
 - #547 Alan M. Schneiderman - 29 Center Dr., Malba, NY 11357 - Imperfs and Missing Colors
 - #548 Michael J. Bernott - 4319 Still Meadow Rd., Fairfax, VA. 22032-0631 - Anything Attractive
 - #549 James H. Boddicker - 103 Tomahawk Trail, S.E., Cedar Rapids, IA. 52403 - Beginner
 - #550 William E. Hall, Jr. - P.O. Box 2537, Universal City, TX. 78148 - Imperfs, Misperfs
 - #551 Norman W. Fincher - P.O. Box 21, Gulf Breeze, FL. 32561
 - #552 Lawrence Matthews - Box 354, Bracebridge, Ontario, Canada POB 1C0
 - #553 Owen - P.O. Box 1055, Imperial Beach, CA. 92032
 - #554 D. Kayser - P.O. Box 80729, Santa Barbara, CA. 93190-0729
 - #555 Theodore H. Yonkers - 6118 Edith N.E., #167, Albuquerque, NM 87107
 - #556 Israel I. Bick - Box 854, Van Nuys, CA. 91408 - Dealer
 - #557 Norman R. Berman - P.O. Box 2051, Michigan City, IN. 46360 - Imperfs, Misperfs, Color Shifts and Missing
 - #558 John M. Coggins - 7520 Spring Acres, Kannapolis, NC 28081 - Everything (esp. Coils)
 - #559 Felix Salerno, M.D. - P.O. Box 2291, Flemington, NJ 08822
 - #560 Sandra Parris Cutler - P.O. Box 123, Edgartown, MA 02539-0123
 - #561 Joyce L. Kirk - 2049 Rio Vista, Louisville, KY 40207 - Transport. Coils
- Thanks to: Tom Smith, Linn's Stamp News, APS, Stamp Collector, Canadian Stamp News, David Oatman and J.E. Casey.

Address Changes

- #76 G.D. Lacerte - Cinnamon Ridge, 3601 Cambridge, Apt. 189, Las Vegas, NV. 89109
- #157 Richard Simonian - 12602 Daniger Rd., Santa Ana, CA. 92705
- #269 T. Edward Westen - Box 99, Winn, MI. 48896
- #277 Stanley D. Ginsberg - 900 Mix Ave. - Unit 17, Hamden, CT. 06514
- #290 Ray Getsug - 2090 Highland Pkwy., St. Paul, MN 55116
- #302 Stephen R. Butler - 19601 N. 7th St., #1089, Phoenix, AZ. 85204
- #312 Robert Blond - 4907 Lake Rd., Dollard-Des-Ormeaux, Quebec, Canada H9G 1G9
- #346 Bobby D. Reece, Jr. - P.O. Box 10680, St. Louis, MO. 63129-0680
- #417 Leona E. Farrant - 124 Twin Peninsula Ave., Green Hill Acres, Wakefield, R.I. 02879
- #451 Stephen C. Menasian - P.O. Box 205, Allentown, NJ 08501
- #523 Jeremy H. Johnson - 1819 E. Fairbanks St., Tampa, FL. 33604

Deceased

- #367 Marge Finger

Resigned

- #45 Max Mueller

Membership Resumed

#186 Al Warren - Drawer AW, S. Lake Tahoe, CA. 95705
 #254 William Wallerstein - 655 N. Hayworth Ave., Los Angeles, CA. 90048
 #388 Herbert Freese - 234 Bromley Pl., East Brunswick, NJ 08816
 #429 Jean B. Neil - 20099 Iron St., Bellingham, WA 98225

THANK YOU for the donations to EFOCC to John Herczeg (#54), Elizabeth Joyce (#294), Margaret Breuhan (#319), Thomas Baker (#326), Bonnie Cook (#436), M.S. George (#469), and a special Thank-You to Howard Gates (#104) who donated 25 copies of his booklet "Catalog of Rare Missing Inscription United States Stamps" to give to new members who signed up at Ameripex.

Dear EFOCC Members,

It is with great regret that I must write this final letter. Several personal matters have precluded me from effectively continuing my role as Auction Director. Rather than remain as a sloppy and haphazard director, I've decided to give the reins to another interested member.

My tenure was most enjoyable despite the minor catastrophies from time to time. Basically, things went very smoothly, and I wish I were able to continue. Many people have supported me and the auctions in general. Although there is not sufficient room to thank all of you, I'd like to thank you collectively and ask each of you to give Joe Licata your continued support. He is quite competent, and I think you will enjoy working with him.

Despite a shaky start with various problems, I feel that I have managed to build a solid foundation for the auctions. The past three auctions have proved to be more successful than ever, mainly due to minor changes and better quality photos. I'm certain Joe Licata will continue with the present setup, at least for the time being, and to also make improvements in the future.

It is no unfounded rumor that EFOCC Auctions are some of the best in existence, at least club auctions. This has taken much hard work and planning by several members. I firmly believe this will continue. However, none of it would have been possible without YOU, the consignors and bidders.

I would also like to comment on the recently published comments about EFOs being "junk." I firmly believe that such people as those who take a stab at the heart of the EFOCC are often times frustrated with perhaps the club operation and/or a bad experience in dealing with EFOs. EFOs have also been called trash. Well, my friends, Cinderella material has often times been called trash, too. Yet, there are some items that bring hundreds or even thousands of dollars when they exchange owners. Would you be willing to pay \$250 for a plate number 6 on the 18¢ Flag coil, #1891? Some consider this crazy.

EFOs are not alone in the "trash" area, as there are many others. It seems as though any club or collecting area that is off the beaten path of traditional collecting is "trash" to some collectors. My suggestion is to simply ignore such collectors who look down upon your area of interest with disdain. You are brave, and not a crowd follower. As long as you are happy with what you are doing, to heck with such people. To each his own.

All in all, I think the EFOCC is one of the best darn clubs ever. I'm proud to exclaim that I'm an EFO collector and an EFOCC member. You should be, too.

Although I'm parting as Auction Director, I plan to keep in touch through the pages of the EFOC. THANK YOU ONE AN ALL, and GOOD LUCK, JOE!!

Sincerely,
 (signed)
 Scott A. Shaulis

MORE ERRORS CAUGHT JUST IN TIME

by
D. C. Speirs

In the August, 1985, issue of EFOC, I mentioned a few design errors intercepted just before the stamps were released. In this article, I will list a few more of these might-have-beens, not all design errors.

A recent design error almost made its way onto a 35¢ stamp released by Micronesia in honor of AUSIPEX. The design was of the stamp-on-stamp topical type, depicting an Imperial German stamp overprinted 20-pfennig. The Crown Agents sent out the usual publicity photos, and several philatelists then noticed that the postmark shown on the German stamp was incorrect. The postmark was of Truk, dated 1907, long after the German overprints ceased to be valid for postage. The black printing plate was altered and a correct postmark was added, that of Ponape for the year 1899 (Lewy 1985).

Going back to the year 1958, but still in the Pacific, Ryukyu began to convert from the yen to the American dollar. Stamps were prepared and a design announced. One of the stamps was given the value '1.00\$.' This error was noticed before the plate was engraved, and corrected to '\$1,' with the dollar sign in its proper position. A probable explanation would be that the Japanese were not entirely familiar with the notation of the dollar system (Schoberlin 1964).

A printing error that almost made it to the USPO counter and beyond occurred with the 1965 Florida Settlement stamp. Despite elaborate checking systems, both mechanical and human, a sheet of stamps was printed with no yellow. There are four panes of stamps to one sheet. The stamp was to be released on August 28. On August 21, a BEP inspector discovered one of these defective panes and set off a major search for the other three. Two were found the same day, just before shipment. A very quiet and urgent inspection of 144 post offices turned up the other stamp pane at Chicago (Anonymous 1965).

REFERENCES

Anonymous (1965) Four no-yellow panes of Florida Settlement stamp caught in time. AMERICAN PHILATELIST 79(1):12,14

Lewy, A. (1985) Micronesia catches design error in time. LINN'S STAMP NEWS, March 18, page 75

Schoberlin, M (1964) Printing and plating of the 1958 Ryukyu currency conversion provisional series. AMERICAN PHILATELIST 77(5):339-346

Question of the Month (or the "You've Got To Be Kidding" Dep't.)

"Dear Mr. Hotchner:

This sheet of the 1984 traditional Christmas stamp has the Plate block number and wider margin at the top of the sheet. All the rest of the sheets received locally had plate block numbers at the bottom. Is this an error, freak or oddity? If so is the sheet worth preserving? I would appreciate your evaluation."

Yes, folks, Santa Claus brought me this question as a reminder that we collectors know more than we think we know. It's easy to be smug, but what we do with our knowledge is important. Look for opportunities to share it - and make a convert! -JMH

U.S. ERRORS



**Inverts
Imperforates
Colors Omitted**

1986

Stephen R. Datz

**U.S. ERRORS is the most comprehensive
catalogue for U.S. postage stamp errors.**

- ★ Inverts
- ★ Imperforates
- ★ Colors Omitted
- ★ Latest Prices
- ★ Quantities Known
- ★ Fully Illustrated

\$10

POSTPAID

GENERAL PHILATELIC CORPORATION

POST OFFICE BOX 402 LOVELAND, COLORADO 80537

WORLDWIDE STAMPS & POSTAL HISTORY

Schiff Auctions

"Especially for Specialists"



If you do not get our catalogs you are missing out! Send \$8.50 (\$12.50 overseas) for a year's subscription to catalogs and prices realized or send \$1.00 (\$1.50 with prices realized) for our next auction.

Catalogs picked up at our office are complimentary.

WHAT IS A SCHIFF "ESPECIALLY FOR SPECIALISTS®" AUCTION?

It's an auction designed with YOU in mind, whether you are a buyer or a seller of U.S. or Worldwide stamps.

FUTURE AUCTION DATES
U.S. & Worldwide Stamps and Postal History
 AUCTION #177 SEPTEMBER, 1986

(Consignments now being accepted for our future auctions.)

WE INVITE YOU TO CONSIGN

individual stamps, covers or collections for Public Auction or Private Treaty Sale.

WE ALSO PURCHASE OUTRIGHT!

Contact us first, describing your material. Include your address and phone numbers.

Jacques C. Schiff, Jr., inc.

195 MAIN ST.
 RIDGEFIELD PARK, NJ 07660

Licensed & Bonded Auctioneers
 Established 1947



TELEPHONE: 201-641-5566, From NYC: 662-2777

A BROCHURE DETAILING OUR SERVICES SENT UPON RECEIPT OF A STAMPED SELF-ADDRESSED LEGAL SIZE ENVELOPE.

• ESPECIALLY FOR SPECIALISTS

• ESPECIALLY FOR SPECIALISTS •

Clerk Quirks - Multiple Cancels by E. Steven Brand and John Hotchner

In response to a recent Linn's feature, John was sent a Christmas card red envelope with a minimum of 3 cancels in each corner - back and front - where a stamp could be. Unfortunately, because of the dark color of the envelope, it won't copy. Therefore, Steve has provided a similar sample - and an explanation as to why this happens.

When John received the envelope, he theorized that the multiple cancels came about because the paper glows under long wave. Could the facer canceller have "thought" there were stamps in each possible upper right corner, and somehow kept recycling it? He posed that question to Steve. He responded as follows:

UNITED STATES POST OFFICE

OFFICIAL BUSINESS
EP189



"This is a type M cancel machine of the old school and this is what happened: This cover was mailed by Mr. X in Scotch Plains, N.J. and was either given to a carrier or dropped in a drop box or dropped in an out of town drop slot instead of a local drop slot. Carrier mail and drop box mail is not locally hand sorted but shipped to a distribution center, hence the work done and cancellations in Elizabeth, N.J.

"The Clerk in Elizabeth had just inked his cancelling machine and grabbed a letter to use to run off the excess ink (I've done this same procedure a thousand times this year alone.) This letter was used to absorb the excess ink and that's what happened. Instead of running a big hand full of letters on the soaking wet plate, one letter is usually pulled out of the pile and repeatedly run thru to absorb, then back to work cancelling - this is a popular Clerk quirk practiced in most every office with this type of machine.

"The residue following the cancel comes off of rubber rollers that guide the letter thru the canceler. After 8 or 10 passes this residue stops and just the cancel will print. By the way this machine is manually inked and needs inking, after about 6 feet of letters; or at 250 letters inked to the foot, about every 1,500 letters."

Catalog of Rare Missing-Inscription United States Stamps

"These unusual, popular and expensive stamps are well illustrated..." --*The Stamp Wholesaler.*

"Well worth the small cost...I hope it will find a place in your library." --John Hotchner in *EFO Collector*.

"Your publication is lovely." --Noted error-stamp auctioneer.

"I like it and applaud your endeavor..." --Respected British philatelic journalist.

\$4.95 pp. Howard Gates, Box 955LOW, Locust Grove, VA 22508.

1986-1988 EFOCC OFFICERS AND BOARDPRESIDENT**John M. Hotchner**

P.O. Box 1125

Falls Church, VA 22041-0125

TREASURER andAWARDS DIRECTOR**Phillip E. Nazak, Sr.**

P.O. Box 662

Binghamton, NY 13902-0622

PUBLICITY DIRECTOR**E. Steven Brand**

P.O. Box 1058

Marathon, FL 33050

BOARD MEMBER AT LARGE**Stuart M. Kremsky**

Suite 9-L, 1716 Ocean Ave.

San Francisco, CA 95112

CIRCUIT DIRECTOR**Howard A. Pohl**

P.O. Box 695059

Miami, FL 33269-2059

VICE PRESIDENT andBACK ISSUES DIRECTOR**Daniel S. Pagter**

P.O. Box 6394

Albany, CA 94706-0394

SECRETARY**James E. McDevitt**

1903 Village Rd., W.

Norwood, MA 02062-2524

ADVERTISING DIRECTOR**David Oatman**

315 St. John St.

Bathurst, N.B. E2A 1E8

Canada

AUCTION DIRECTOR**Joseph A. Licata**

209 East 11th Ave.

Conshohocken, PA 19428

EDITOR**Lou Novacheck**

P.O. Box 149

Ft. Meade, MD 20755-0149

COPYRIGHT 1986 EFO COLLECTORS' CLUB. All contents copyrighted by EFO Collectors' Club. Authors and contributors have express permission to reuse any of their own material contained herein elsewhere and without restriction. Except for material reprinted herein or material individually copyrighted by the author, permission is granted for any material herein to be reprinted elsewhere as long as full credit is given, including Volume and Issue Number, and the address of the EFOCC Secretary.

The EFO Collector is published six times annually during alternate months. The deadline for any issue is the 15th day of the month preceding the month of issue, e.g., the deadline for the December issue is November 15. Send material directly to the Editor. Subscription/membership applications should be sent to the Secretary, along with annual dues of \$10.00.

Advertising for the EFO Collector will be accepted at the following rates: Full page - \$22.50; half-page - \$12.00; quarter-page - \$6.50; classified trade or buy/sell ads at 5c per word. Contract display ad rates are approximately 20% less. EFOCC members are entitled to the contract rate for all single insertion display ads and to three free EFO POST, 35-word (excluding address) classified ads annually.

DIRECT ALL INQUIRIES AND CLASSIFIED ADS TO THE ADVERTISING DIRECTOR
EFO POST ads (ONLY!) go directly to the Editor.

24TH EFOCC AUCTION ACTION

<u>LOT</u>	<u>SOLD</u>	<u>LOT</u>	<u>SOLD</u>	<u>LOT</u>	<u>SOLD</u>	<u>LOT</u>	<u>SOLD</u>	<u>LOT</u>	<u>SOLD</u>	<u>LOT</u>	<u>SOLD</u>
1	8.00	22	17.00	41	13.00	59	4.00	96	7.50	118	11.00
3	11.00	25	15.00	42	16.00	61	14.00	101	19.00	119	26.00
4	5.50	26	8.50	43	12.00	63	105.00	102	12.00	120	9.50
5	5.00	27	21.00	45	32.00	65	16.00	103	16.00	121	2.50
6	5.50	29	30.00	46	26.00	66	16.00	104	3.50	122	2.50
7	20.00	30	15.00	47	5.50	75	5.50	105	21.00	123	12.00
8	5.50	31	15.00	48	17.00	77	16.00	106	9.00	124	4.50
9	12.00	32	18.00	49	3.50	79	13.00	108	7.50	125	21.00
10	11.00	33	3.50	50	6.50	80	8.00	109	7.50	126	5.50
11	10.00	34	3.50	51	11.00	82	65.00	110	19.00	127	16.00
12	21.00	35	15.00	53	13.00	89	5.00	111	6.50	128	38.00
13	5.50	36	17.00	55	9.50	90	21.00	113	16.00	129	8.00
14	6.50	37	31.00	56	25.00	92	6.50	115	16.00	D3	5.50
15	6.50	38	16.00	57	14.00	93	5.50	116	17.00	D4	16.00

EPOCC AUCTION #26

<u>LOT#</u>	<u>SCOTT</u>		<u>Min.Bid</u>
<u>UNITED STATES</u>			
<u>A. PERFORATION</u>			
1	502	Used 3mm misperfed strip of 3 (S.E. top)	3
2	502	Mint H OG, 4mm vert. misperfed block/4	25
3	1033	MNH 6 1/2mm misperfed coil pair	3
4	1292	MNH F pair w/ 2 completely missing perfs	1.50
5	1338	MNH 3mm misperfed pair	3
6	1400	MNH vert. misperfed ZIP block/4 w/ part of "Use Zip Code" in stamp	15
7	1402	MNH coil strip of 3 w/ missing and blind perfs	16
8	1563	MNH horz. pair with diagonal misperf	15
9	1576	Two (2) MNH singles w/ horz. & vert. misperfs	17.50
10	1584	MNH vert. misperfed block/4	4
11	1593	MNH 6 1/2mm vert. misperfed block/4 with denom. on wrong side of stamps	30
12	1625a	MNH imperfed coil pair	10
13	1683	MNH single with two way misperf	10
14	1714	Used horz. misperf w/ denom. & inscript. at top	6
15	1726	MNH Mail Early block/6 with 7mm horz. misperf thru heads of standing figures	45
16	1770	MNH top and bot. stamps of major misperfed sheet	17.50
17	1822	MNH 6mm vert. misperfed LL block/4 with denom. and inscription on wrong side of stamps	35
18	1823	Two (2) MNH horz. misperfs including one under nose	30
19	1935	MNH UL block/4 w/ slight diagonal/horz. misperf	30
20	2004	MNH 6mm horz. misperf	4
21	—	Two (2) MNH coil pairs w/ 50% misperf (Scott 1908 & 2005)	15
22	2015	MNH with 50% horz. misperf	15
23	mix	Ten (10) used commem. misperfs, \$.06-.18 variety	10
24	C23	MNH block/4 with diagonal/horz. misperf	15
25	J97	MNH 4mm horz. misperf	3
26	J97	MNH margin block/4 with 4mm horz. misperf	10
<u>B. INKING</u>			
27	406	Two (2) blk/4 w/ extreme shades (1 bk. H, 1 bk. IH)	30
28	1895	MNH coil pair with black star field and black & blue in red stripes; flag pole barely visible left of flag	7
29	1895	SAME in coil strip of 3	10
30	2059/62	MNH Copyright block w/ excessive ink changes the blue & green to different shades (w/ Bureau E. & P. letter)	17.50
31	C32	MNH margin block/4 w/ wet printing wiping smear	15
32	E21	MNH block/4 w/ wiping smear on right pr.	10
<u>C. COLOR SHIFTS</u>			
33	703	MNH block/4 w/ red plate# and black vignette shifted to right into frames	12.50
34	1480/83	Two (2) MNH vert. prs. making up block with 7mm black litho shifted up	20

35	1509	Ten (10) used with red color shifts	3
36	1555	MNH PB/4 with 1/2mm dark brown shift up causing a ghost appearance	2
37	1608	MNH block/4 with flame down & behind lamp	20
38	1611	Two (2) MNH versions of misplaced flame	10
39	C87	MNH vert. pr. w/ blue & red 4mm down; appears misperfed	15
40	C91/92	MNH vert. pair w/ intaglio colors 6mm high	20
<u>D. TRIMMINGS</u>			
41	1058	Used 4mm miscut coil strip of 3	7.50
42	1395	Ten (10) used miscut booklet pane stamps	3
43	1900a	MNH 8mm miscut coil pr.; Precan. lines centered properly	17.50
44	1906	MNH miscut coil strip of 3 w/ bot. of wheels at top	1.50
45	mix	Fifteen (15) different gutter snipe singles	7.50
46	mix	Eight (8) different gutter snipe blocks/4	7.50
<u>E. PAPER</u>			
46A	158	Used unusual vert. crease down center of stamp	15
<u>F. PLATE AND TRANSFER VARIETIES</u>			
47	372	Used UT in "ost" and "ts".	8.50
48	372	MNH (tiny gum skip) plate crack adjacent to left outer frame line.	15
49	402	Used with plate crack above "osta"	6
50	496	MNH joint line pr. w/ mismatched plates at line; right stamp shows bot. of stamp above	25
51	653	Two (2) MNH LL PB/12 showing #72 stamp w/ gashes across face before & after burnishing	30
52	1549	MNH PB/4 w/ tagging ghosts in design & dbl. Plate #	8.50
<u>BOOKLET PANES</u>			
<u>A. PERFORATION</u>			
53	1288bc	MNH complete booklet of 3 panes w/ 7mm vert. misperf into stamps at left	30
<u>B. TRIMMING</u>			
54	804b	MNH pane w/ 35% Pl.# 22010LL	4
55	807a	MNH pane w/ 65% Pl.# 22434UL	8
56	807a	MNH matched set w/ 40%LL & 60% UL Pl.# 22436	14
57	807a	MNH pane w/ 6mm miscut to right	15
58	1035a	MNH pane w/ 50% Pl.# 24976UL	5
59	1035a	MNH pane w/ 80% Pl.# 25013UL	6
60	1036a	MNH pane w/ 6mm miscut to right	4
61	1213a	MNH pane w/ 90% Pl.# 28084UL	10
62	1213c	MNH miscut pane w/ very unusual EE markings at right	20
63	1393a	MNH miscut position 11 pane	3
64	C25a	MNH pane w/ 45% Pl.# 22980LL	10
65	C39a	MNH matched set w/ 35% LL & 45% UL Pl.# 24141 (UL w/ VLH)	20
<u>POSTAL STATIONARY</u>			
<u>A. COLOR SHIFTS</u>			
66	910	FDC addressed cachet w/ Czech. flag shift up to frame	12
67	912	FDC cachet w/ Lux. flag shift up & to right into frame	20

68	C11	Two FF covers; 1 w/ vignette shift up; 1 with vignette shifted down	15
69	UX38	Post card with unknown blotch on stamp	5

DONATED LOTS**A. PERFORATION**

D1	158	Used VF w/ bent perf pin at bot. left	Est. 2
D2	406	MNH pair w/ 6mm vert. misperf	Est. 20
D3	510	MNH with 5mm vert. misperf	Est. 30
D3A	538	Mint HR coil waste w/ clipped perfs at right	Est. 5
D4	634	MNH misperf w/ void design at right	Est. 7.50
D5	900	MNH pair with only 4 perfs between	Est. 5
D6	1147	MNH with 2mm misperf	MB 5
D7	1150	MLH with 9mm vert. misperf to right	Est. 17.50
D8	1287	MNH vert. misperf, 13cents appears as 3 cents	MB 5
D9	1370	MNH VF w/ blind perfs between; appears imperf	Est. 10
D10	1393D	MNH pair with 2mm vert. misperf to right	Est. 5
D11	1431	MLH w/ two way misperf	Est. 22.50
D12	1459a	MNH top margin block/4 w/ 2 1/2mm horz. misperf	Est. 10
D13	1468	MNH vert. misperf w/ "0 th Anniversary"	Est. 7.50
D14	1468	MNH Pl.# single w/ "0 th Anniversary" and Pl.# in stamp.	Est. 17.50
D15	1485	MNH with 7mm horz. misperf	Est. 10
D16	1485	MNH block/4 w/ 3mm vert. misperf	Est. 12
D17	1520	MNH coil pair w/ 6 1/2mm misperf to right	MB 5
D18	1526	Mint OG margin single w/ two way misperf	Est. 5
D19	1560	MNH Pl.# pair w/ 3mm vert. misperf	Est. 12.50
D20	1560	MNH w/ 3mm horz. misperf up	Est. 8
D21	1615	MNH coil pair w/ 3mm misperf to right	Est. 7.50
D22	1703	MNH vert. pair w/ blind perfs all around; pair appears imperforate	Est. 12.50
D23	1703	MNH misperf left margin pair w/ part design of adjacent pane in margin	Est. 17.50
D24	1894	MNH strip of 3 with dramatic diagonal misperf	Est. 22.50
D25	2087	MNH (gum skip) pair w/ right sheet margin & slight vert. diagonal misperf	Est. 17.50
D26	2096	MNH w/ dramatic vert. diagonal misperf	Est. 30
D27	C39	MNH w/ two way misperf	Est. 7.50
D28	C39	MNH Block/4 w/ 3 1/2mm misperf to right	Est. 12.50
D29	C39	MNH pair w/ 4mm vert. misperf	Est. 8
D30	C75	MNH ZIP block/4 w/ 3mm vert. misperf	Est. 15
D31	R163	MNH (spot of DG) w/ 5mm horz. misperf	Est. 5

B. INKING

D32	905	MNH block of 16 w/ ghost Pl.#s along margin	MB 5
D33	1035	MNH PB/4 dry printing w/ moderate wiping smear	Est. 10
D34	C94a	MNH VF vert. pair w/ tan & yellow light due to ink starvation	Est. 7.50

C. COLOR SHIFTS

D35	651	MNH Avg. black shift 1 1/2mm right and 2 1/2 mm down; "Vincennes" completely covered	Est. 22.50
D36	1391	MNH engraving shift down	Est. 12.50

D37	1451a	MNH block/4 with 2 1/2mm shift to right, appears misperf.	Est. 22.50
D38	1455	MLH black shift, appears to be misperf	Est. 7.50
D39	1462	MNH Pl.# single w/ difficult progressive color shift	25.00
D40	1468	MNH black shift; two tailed cat	Est. 7.50
D41	1472	MNH red and gold shift to right	Est. 12.50
D42	1473	MNH engraving shift to left	Est. 12.50
D43	1473	MNH VF litho shift up; top of snake cut	Est. 5
D44	1478	MNH with Pl.#; litho shift up 1 1/2mm and with red & blue ghost image, unusual together.	Est. 12.50
D45	1478	MLH w/ horz. misperf & litho shift 3mm up	Est. 12.50
D46	1483a	MNH PB/4 w/ 1 1/2mm vert. shift of red & grey litho	Est. 22.50
D47	1483a	SAME in ZIP block/4	NP Est. 15.50
D48	1483a	SAME in Mail Early block/4	NP Est. 14
D49	1483a	SAME in Bicen. Inscr. block/4	NP Est. 14
D50	1483a	SAME in bot. margin block/4	NP Est. 12
D51	1483a	SAME in top margin block/4	NP Est. 12
D52	1483a	SAME in left margin block/4	NP Est. 12
D53	1483a	SAME in block/4	NP Est. 11
D54	1483a	SAME	NP Est. 11
D55	1483a	SAME	NP Est. 11
D56	1483a	SAME in top vert. corner pair	NP Est. 5.75
D57	1483a	SAME in bot. vert corner pair	NP Est. 5.75
D58	1483a	SAME in right margin vert. pair	NP Est. 4.50
D59	1483a	SAME	NP Est. 4.50
D60	1483a	SAME	NP Est. 4.50
D61	1547	MNH blue color shift between stamp, blank is over "on" of Conservation	Est. 17.50
D62	1553	MLH 7mm major diagonal engraving shift	Est. 22.50
D63	C98	MNH nice progressive litho shift	Est. 17.50
D64	CE2	MNH P vignette shift to left	Est. 12.50
D65	CE2	SAME	Est. 12.50
D66	J97	MNH number shift right into frame and "e" of "due"	Est. 7.50

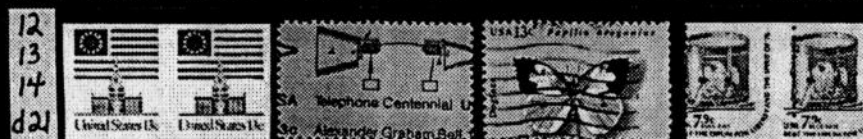
D. PLATE AND TRANSFER VARIETIES

D67	156	Used F severe rough perfs, overall double transfer, not D.T. listed in Scott	Est. 15
D68	498	Used FVF pair w/ strong undergum set-off	Est. 12.50
D69	1453	MNH margin strip of 3 w/ strong undergum set-off	Est. 35.00

BOOKLET PANES

D70	634	MNH partial pane of 4 w/ 5mm miscut right	MB 7
D71	1737a	MNH misperf full pane w/ 15 cents twice at left and no denom. at right	Est. 25.00

EFOCC AUCTION #26 CLOSES—OCTOBER 31, 1986





MALE EARLY
IN THE DAY



15
d34
d37



31
34
34



d46
37



38
38
40
d63



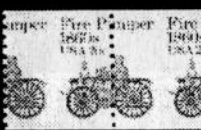
8
d9
d18



d15
16
16
20



21
21
Ex23
d29



25
d31
28
29



d36
d39
d40



d42
d43
Ex35
46A
d66



41
d64
d65



d28
d30



d25
26
33



Ex27
d32
d33



30
32



Ex.46
51
51



52
d68
d67



39
70
d69



54
55
56
58
59



64
65
66
67
68



59
60
61
63



53
d71



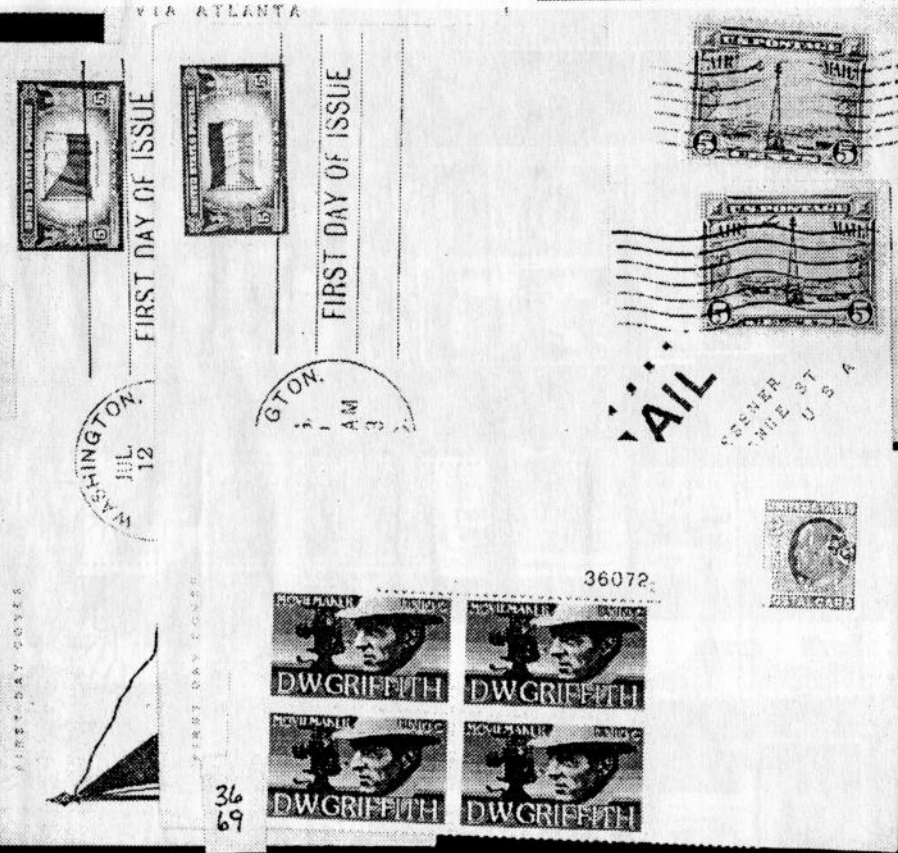
43
50
44



47
48
49
d3A



66
67
68
69



d26
d35
d38
d41
d45



d44
d45
d61
d62
42



EFOCC#

HOME PHONE:

AREA CODE ()

OFFICE USE

ONLY

10

1997

10

1

NO RIVER

NO DOIL
PREMII

CONTINUED

CHECK

CHIEF

VOLTAGE

NOT

RTDS

0
1
2
3
4

CAREFULLY

1000

ING BIDS:

limit less than

ds executed in

cal order not

E.

A 19428

Minimum Bid	
-------------	--

Catalog Used (If
other than Scott)

Then mount your lot here. For covers, multiples, or other lots, use the reverse side of the form or another sheet of paper or cardboard (better). Be sure to include this form if the lot is mounted separately (attach it to the lot, if possible).

Extra forms are available for 4¢ each
and a SASE. 10 for 1 oz., 20 for 2 oz.

EFOCC #

HH	Used
1	1
2	1
3	1
4	1
5	1
6	1
7	1
8	1
9	1
10	1
11	1
12	1
13	1
14	1
15	1
16	1
17	1
18	1
19	1
20	1
21	1
22	1
23	1
24	1
25	1
26	1
27	1
28	1
29	1
30	1
31	1
32	1
33	1
34	1
35	1
36	1
37	1
38	1
39	1
40	1
41	1
42	1
43	1
44	1
45	1
46	1
47	1
48	1
49	1
50	1
51	1
52	1
53	1
54	1
55	1
56	1
57	1
58	1
59	1
60	1
61	1
62	1
63	1
64	1
65	1
66	1
67	1
68	1
69	1
70	1
71	1
72	1
73	1
74	1
75	1
76	1
77	1
78	1
79	1
80	1
81	1
82	1
83	1
84	1
85	1
86	1
87	1
88	1
89	1
90	1
91	1
92	1
93	1
94	1
95	1
96	1
97	1
98	1
99	1
100	1

Average

Describe:

For Auctioneer's Use

Bidding Area	Raise
1.00 - 9.50	.50
10.00 - 49.00	1.00
50.00 - 97.50	2.50
100.00 - 495.00	5.00
500.00 +	10.00

over the second highest, unless the MB is not reached. EFOCC Auctions reserves the right to remove any lot.
A Set of Auction Rules is available for a SASE.

All lots will be sold to the highest bidder at one increment
Any bids which are not submitted in good faith in the estimation of the Auction Director may be rejected.

ACCEPTABLE ABBREVIATIONS AND WHAT THEY MEAN

CENTERING

AVE - Perforations cut design
F - Fine, perfs clear of design
VF - Very fine, well centered with opposite sides nearly equal
XF - Extremely Fine, perfect centering on all sides

GUM

NH - Never Hinged
LH - Light Hinge Mark
H - Hinged, some gum loss
HR - Hinge remnants, some pieces adhere to stamp
HH - Heavy Hinge, much gum disturbance and/or heavy hinge remnant
OG - Original Gum
RG - Regummed
NG - No Gum
NG as issued - no gum on stamps, issued without gum

NP - No Photo
@ - at
Bklt - Booklet
blk - black
BLK - Block
btw - between

cat. - catalog value

chg - change

DBL - double

dn - down

EST - Estimate of value

horz - horizontal

imp - imperforate

lf - left

litho - lithographic

printing

M - Mint, uncanceled

MB - Minimum Bid, lowest price at which lot will be sold

mm - millimeter

norm cpy - normal copy

Pl # - Plate Number

pr - pair

prnt - printers

rt - right

SE - Natural Straight Edge

SS - Souvenir Sheet

Shf - Shift

Used - Canceled

Vert - Vertical

w/ - with

RETURN TO: Hotchner, POB 1125, Falls Church, VA. 22041-0125
Mailed From: EFOCC, POB 1058, Marathon, FL. 33050-0058

FIRST CLASS

FIRST CLASS

FIRST CLASS

FIRST CLASS

AIR MAIL